

STATE OF KANSAS
STATE CORPORATION COMMISSION

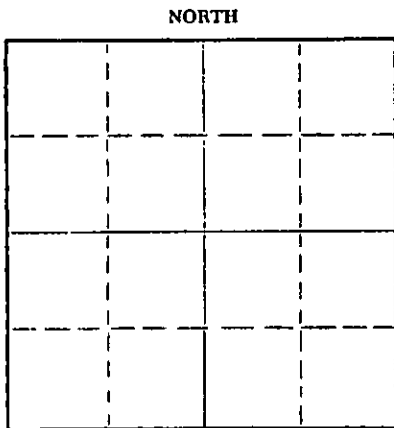
Form CP-4

Give All Information Completely
Make Required Affidavit
Mail or Deliver Report to:
Conservation Division
State Corporation Commission
211 No. Broadway
Wichita, Kansas

WELL PLUGGING RECORD

Ellis County, Sec. 27 Twp. 11 Rge. 18W (SE) (W)

Location as "NE/CNWxSWx" or footage from lines SE NW NW
Lease Owner Don Brown
Lease Name Henderson Well No. G-6
Office Address 2311 Liberty Bk. Bldg. Oklahoma City, Oklahoma
Character of Well (completed as Oil, Gas or Dry Hole) Oil-depleted
Date well completed September 20, 1949
Application for plugging filed March 9, 1959
Application for plugging approved March 10, 1959
Plugging commenced March 21, 1959
Plugging completed March 21, 1959
Reason for abandonment of well or producing formation



Locate well correctly on above
Section Plat

If a producing well is abandoned, date of last production 19
Was permission obtained from the Conservation Division or its agents before plugging was commenced? yes

Name of Conservation Agent who supervised plugging of this well Eldon Petty
Producing formation Depth to top Bottom Total Depth of Well 3614' Feet
Show depth and thickness of all water, oil and gas formations.

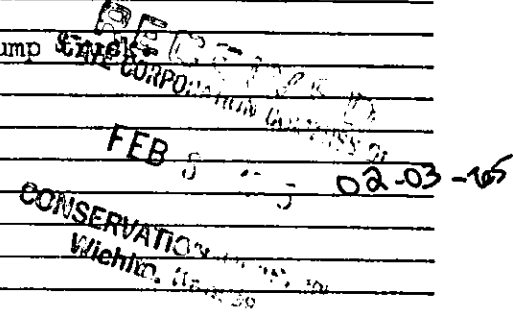
OIL, GAS OR WATER RECORDS CASING RECORD

FORMATION	CONTENT	FROM	TD	SIZE	PUT IN	PULLED OUT

Describe in detail the manner in which the well was plugged, indicating where the mud fluid was placed and the method or methods used in introducing it into the hole. If cement or other plugs were used, state the character of same and depth placed, from feet to feet for each plug set.

8 5/8" at 1365' circulated with cement- 5 1/2" 3606' with 100 sacks cement behind.
Filled with sand to 3595' set 4 sacks cement with dump bailer, pulled 2960' 5 1/2" to 600', circulated hole with heavy mud (Gel) through 5 1/2", displaced 25 sacks cement through 5 1/2" at 600', heavy mud to 220', displaced 20 sacks cement through 5 1/2" at 220', heavy mud to 35', set bridge and 10 sacks cement to bottom cellar.

Mudding and cementing by West Supply Company pump



(If additional description is necessary, use BACK of this sheet)
Name of Plugging Contractor West Supply Company
Address Chase, Kansas

STATE OF KANSAS, COUNTY OF RICE, ss.
Noel J. Knight (employee of owner) or (owner) of the above-described well, being first duly sworn on oath, says: That I have knowledge of the facts, statements, and matters herein contained and the log of the above-described well as filed and that the same are true and correct. So help me God.

(Signature) Noel J. Knight
Chase, Kansas
(Address)

SUBSCRIBED AND SWORN TO before me this 1st day of February, 1965

My commission expires May 20, 1968
Milton J. White Notary Public.

Contractor: Harbar Drilling Company

Don S. Packer
 HENDERSON 6-6

Sec. 27-118-18W, Ellis County, Kansas

Rigging up Rotary Tools 8-27-49
 Tearing out Rotary Tools 9-13-49
 Rigging up Cable Tools 9-14-49
 Tearing out Cable Tools 9-20-49

Ran 60 Jts 8 5/8" surface pipe. Set
 at 1263 and cemented with 650 sacks cement
 Ran 112 Jts. 5 1/2" casing. Set @ 3606' and
 cemented with 100 sacks cement.
 Tubing: 2" EUE

FORMATION	FROM	TO
Rock	0	122
Blue Shale	122	600
Sand and shale	620	850
Shale	850	890
Sand and red bed	890	1010
Shale and red bed	1010	1360
Anhydrite	1360	1395
Red Bed	1395	1480
Shale and shells	1480	1790
Shale	1790	1865
Lime and shale	1865	2000
Salt	2000	2015
Lime and shale	2015	2140
Lime	2140	2190
Lime and shale	2190	2225
Shale and salt	2225	2290
Lime and shale	2290	2915
Shale	2915	3015
Shale and lime	3015	3210
Lime	3210	3265
Lime and shale	3265	3315
Lime	3315	3560
Conglomerate	3560	3565
Lime	3565	3614 Total Depth

I, Don S. Packer, hereby certify that the above Log is true and correct,
 to the best of my knowledge and belief.

Don S. Packer

Subscribed and sworn to before me this 28th day of September, 1949.

Robert Kelly
 Notary Public

My commission expires: March 22, 1952.

Acid: 500 gallons Dowell X, September 17, 1949
 Elevation: 2078 D.F., 2076 Gr.
 Potential: 1,797 B/Day Net

RECEIVED
 STATE CORPORATION COMMISSION

MAR 9 1959

REGISTRATION DIVISION
 Topeka, Kansas

PLUGGING
 FILE SEC. 27 T. 11 R. 18W
 BOOK PAGE 19 LINE 36