

STATE CORPORATION COMMISSION OF KANSAS
OIL & GAS CONSERVATION DIVISION

WELL COMPLETION OR RECOMPLETION FORM
ACO-1 WELL HISTORY

DESCRIPTION OF WELL AND LEASE

Operator: License # 5171
Name TXO Production Corp.
Address 1800 Lincoln Center Bldg.
1660 Lincoln Street
City/State/Zip Denver, CO 80264

Purchaser: None

Operator Contact Person Frank D. Tsuru
Phone (303) 861-4246

Contractor: License # 5421
Name Sage Drilling

Wellsite Geologist: Richard E. Bacon
Phone

Designate Type of Completion
 New Well Re-Entry Workover
 Oil SWD Temp Abd
 Gas Inj Delayed Comp.
 Dry Other (Core, Water Supply etc.)

If OWD: Old well info as follows:
Operator
Well Name
Comp. Date Old Total Depth

WELL HISTORY

Drilling Method:
 Mud Rotary Air Rotary Cable
8/7/85 8/8/85 8/8/85
Spud Date Date Reached TD Completion Date
478'
Total Depth PBTD

Amount of Surface Pipe Set and Cemented at 250 feet
Multiple Stage Cementing Collar Used? Yes No
If yes, show depth set.....feet
if alternate 2 completion, cement circulated
from.....feet depth to.....w/.....SX cmt

API NO. 15-071-20,377-0000

County: Greeley

SE SE NW Sec. 6 Twp. 16 Rge. 42 East West

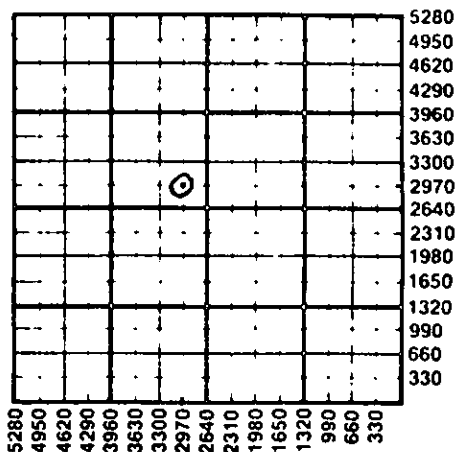
2970 Ft North from Southeast Corner of Section
2970 Ft West from Southeast Corner of Section
(Note: Locate well in section plat below)

Lease Name Edsall "G" Well # 3

Field Name S.W. Stockholm

Producing Formation Lower Morrow

Elevation: Ground 3859 KB 3869
Section Plat



WATER SUPPLY INFORMATION

Disposition of Produced Water: Disposal Repressuring
Docket #

Questions on this portion of the ACO-1 call:
Water Resources Board (913) 296-3717

Source of Water:
Division of Water Resources Permit #
 Groundwater.....Ft North from Southeast Corner (Well)Ft West from Southeast Corner of Sec Twp Rge East West
 Surface Water.....Ft North from Southeast Corner (Stream, pond etc).....Ft West from Southeast Corner Sec Twp Rge East West
 Other (explain)..... (purchased from city, R.W.D. #)

INSTRUCTIONS: This form shall be completed in duplicate and filed with the Kansas Corporation Commission, 200 Colorado Derby Building, Wichita, Kansas 67202, within 90 days after completion or recompletion of any well. Rule 82-3-130 and 82-3-107 apply.
Information on side two of this form will be held confidential for a period of 12 months if requested in writing and submitted with the form. See rule 82-3-107 for confidentiality in excess of 12 months.
One copy of all wireline logs and drillers time log shall be attached with this form. Submit CP-4 form with all plugged wells. Submit CP-111 form with all temporarily abandoned wells.

All requirements of the statutes, rules and regulations promulgated to regulate the oil and gas industry have been fully complied with and the statements herein are complete and correct to the best of my knowledge.

Signature Frank D. Tsuru
Title Drilling & Production Engineer Date 9/4/85

Subscribed and sworn to before me this 2nd day of October 1985
Notary Public Sharon A. Beyers
Date Commission Expires 10/10/88

K.C.C. OFFICE USE ONLY
 Letter of Confidentiality Attached
 Wireline Log Received
 Drillers Timelog Received
Distribution
 KCC SWD/Rep NGPA
 KGS Plug Other (Specify)
RECEIVED
STATE CORPORATION COMMISSION
Form ACO-1 (7-84)

OCT 10-4-85
CONSERVATION DIVISION
Wichita, Kansas

Sec 6 Twp 16 Rge 42

SIDE TWO

Operator Name TXO Production Corp. Lease Name Edsall "G" Well # 3

Sec. 6 Twp. 16S Rge. 42 East West County Greeley

WELL LOG

INSTRUCTIONS: Show important tops and base of formations penetrated. Detail all cores. Report all drill stem tests giving interval tested, time tool open and closed, flowing and shut-in pressures, whether shut-in pressure reached static level, hydrostatic pressures, bottom hole temperature, fluid recovery, and flow rates if gas to surface during test. Attach extra sheet if more space is needed. Attach copy of log.

Drill Stem Tests Taken Yes No
 Samples Sent to Geological Survey Yes No
 Cores Taken Yes No

Formation Description
 Log Sample

Name Top Bottom

N/A
 K-L-K-C

CASING RECORD <input checked="" type="checkbox"/> New <input type="checkbox"/> Used							
Report all strings set-conductor, surface, intermediate, production, etc.							
Purpose of String	Size Hole Drilled	Size Casing Set (in O.D.)	Weight Lbs/Ft.	Setting Depth	Type of Cement	#Sacks Used	Type and Percent Additives
Surface	12 1/2"	8-5/8"	24#	252'	Lite/Cl H	250	3% CaCl ₂
PERFORATION RECORD				Acid, Fracture, Shot, Cement Squeeze Record			
Shots Per Foot	Specify Footage of Each Interval Perforated			(Amount and Kind of Material Used)		Depth	
TUBING RECORD							
Size	Set At	Packer at	Liner Run	<input type="checkbox"/> Yes <input type="checkbox"/> No			
Date of First Production		Producing Method					
		<input type="checkbox"/> Flowing <input type="checkbox"/> Pumping <input type="checkbox"/> Gas Lift <input type="checkbox"/> Other (explain.....)					
Estimated Production Per 24 Hours		Oil	Gas	Water	Gas-Oil Ratio	Gravity	
		Bbls	MCF	Bbls	CFPB		

METHOD OF COMPLETION

Production Interval

Disposition of gas: Vented Open Hole Perforation
 Sold Other (Specify)
 Used on Lease Dually Completed
 Commingled

TXO

TXO PRODUCTION CORP.

1800 LINCOLN CENTER BUILDING
DENVER, COLORADO 80264

TELEPHONE (303) 861-4246

071
15-~~15~~ 20377-0000

October 1, 1985

STATE OF KANSAS
STATE CORPORATION COMMISSION
200 Colorado Derby Bldg.
Wichita, Kansas 67202

Re: Edsall "G" #3
Section 6, T16S-R42W
Greeley County, Kansas

Gentlemen:

Attached please find KANSAS STATE FORMS CP-4 (Well Plugging Record) and ACO-1 (Well History) completed for the above referenced well.

Problems incurred while drilling the surface hole. The contractor set 250' of surface pipe instead of the required 450'. The rig was then skidded 5 feet to the west to the present Edsall "G" #3X location.

Should you have any questions concerning this well, please contact me at the above address.

Sincerely,

TXO PRODUCTION CORP.



Frank D. Tsuru
Drilling & Production Engineer

FDT/ms
Attach.

RECEIVED
STATE CORPORATION COMMISSION

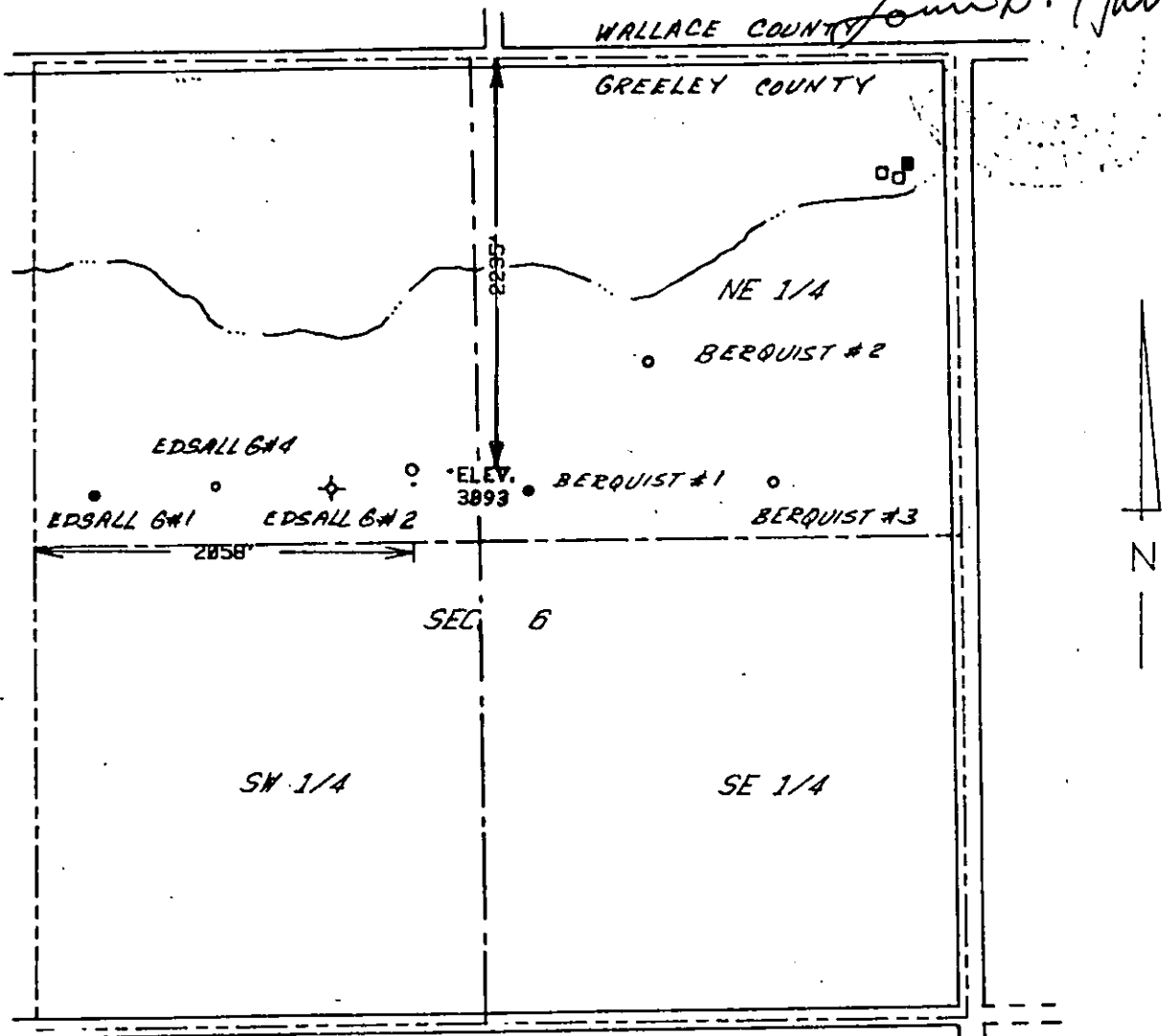
OCT 4 1985

CONSERVATION DIVISION
Wichita, Kansas



The accompanying plat is an accurate representation showing the location of a proposed well. This location may be described as a point 2235 feet south of the north line, and 2058 feet east of the west line of Section 6, Township 16 S Range 42 W of the 6th P.M., GREELEY County, KANSAS. The surface elevation at this point is 3893 feet m.s.l.

John B. Harmon



SCALE - 1"=1000'

- SURVEYED POINT
 - ✕ REFERENCE STAKE (75 'S, 200 'E)
- NW 1/4 SEC. 6 , T 16 S , R 42 W

JAN 25 1933
COUNTY CLERK

HARMON
ENGINEERING
SERVICES

EDSALL G#3 (RE-STAKE)

TXO PRODUCTION CORP

GREELEY CO., KANSAS 29 JULY 1985



TXO PRODUCTION CORP.

1800 LINCOLN CENTER BUILDING
DENVER, COLORADO 80264

TELEPHONE (303) 861-4246

15-071-20377-0000

December 17, 1985

KANSAS STATE CORPORATION COMMISSION
200 Colorado Derby Building
202 W. 1st Street
Wichita, Kansas 67202

Re: Edsall "G" #3
Sec. 6, T16S-R42W
Greeley County, Kansas

Gentlemen:

Enclosed please find Form CO-7 (Plat and Certification of Acreage Attributable to an Oil Well) and the engineering services plat regarding the above referenced well.

Should you have any questions concerning this information, please contact me at the above number.

Sincerely,

TXO PRODUCTION CORP.

Frank D. Tsuru
Drilling & Production Engineer

FDT:ms

RECEIVED
STATE CORPORATION COMMISSION

DEC 19 1985

CONSERVATION DIVISION
Wichita, Kansas



PLAT AND CERTIFICATION OF ACREAGE ATTRIBUTABLE TO AN OIL WELL

15-071-20377-0000

State Corporation Commission, Conservation Division
200 Colorado Derby Bldg. Wichita, Kansas 67202

OPERATOR TXO PRODUCTION CORP.

LOCATION OF WELL:

LEASE EDSALL "G"

2235 feet from the NORTH line

2058 feet from the WEST line

WELL NUMBER 3

Of the NW/4 of Sec 6 T. 16S R. 42W

FIELD S.W. STOCKHOLM

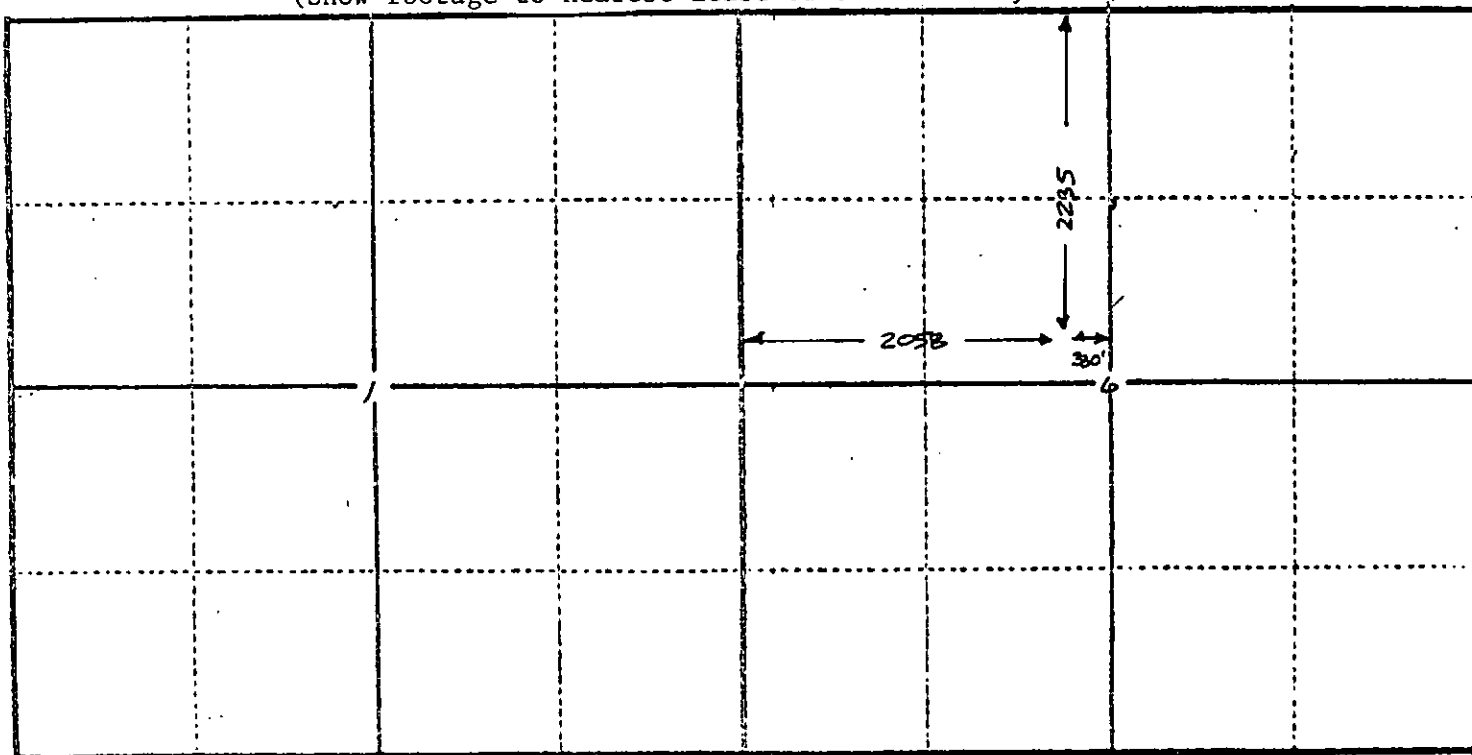
COUNTY GREELEY

*NUMBER OF ACRES
ATTRIBUTABLE TO WELL 20

DESCRIPTION OF ACREAGE:
NW/4 OF SECTION 6, T16S-R42W

P L A T

(Show location of Well and outline attributable acreage)
(Show footage to nearest lease or unit boundary line)



The undersigned hereby certifies that he is Frank D. Tsuru for TXO Production Corp., a duly authorized agent, that all information shown hereon is true and correct to the best of his knowledge and belief, and that all acreage claimed as attributable to the well named herein is held by production from that well.

Frank D. Tsuru

Suscribed and sworn to before me on this 17 day of December, 19 85.

Nada J. Branson
Notary Public

My Commission expires December 14, 1986

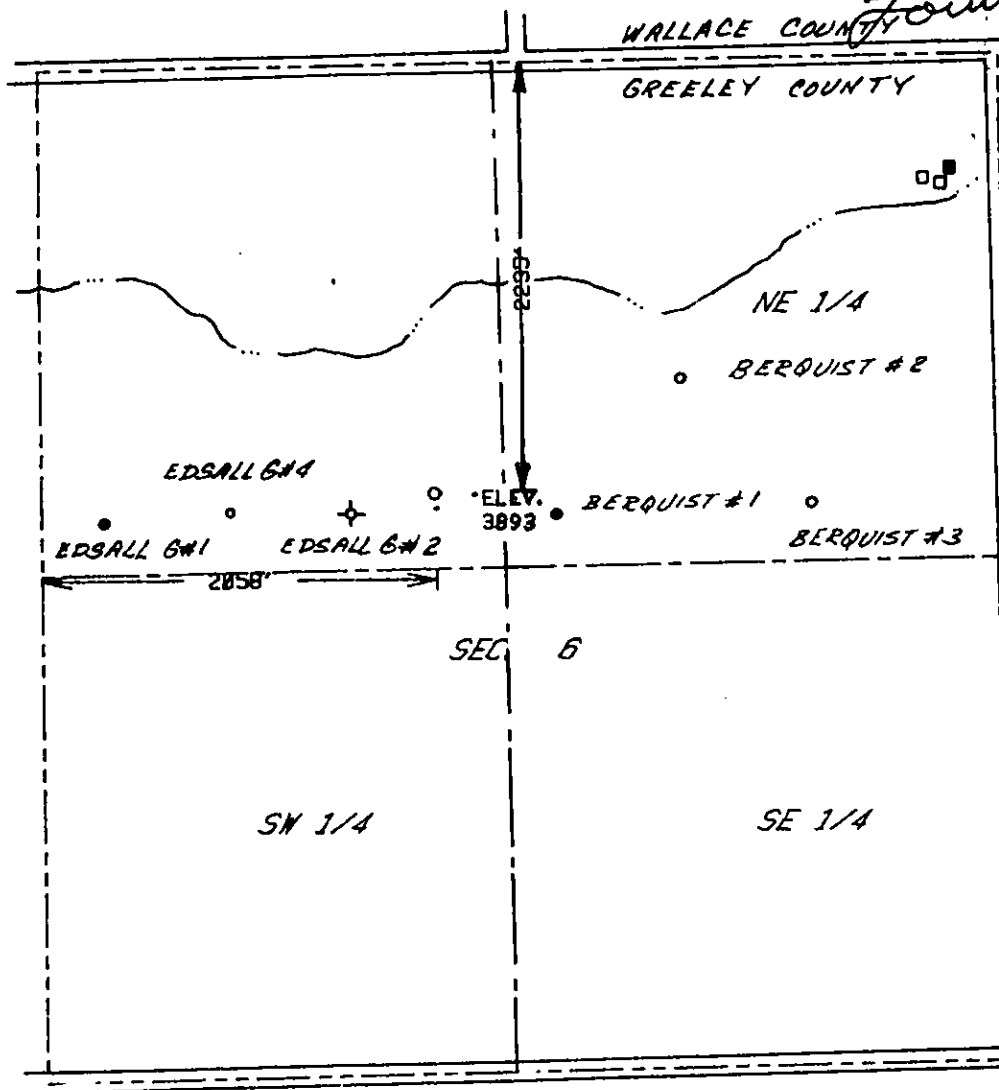
RECEIVED
STATE CORPORATION COMMISSION

DEC 1 9 85

CONSERVATION DIVISION
Wichita, Kansas

The accompanying plat is an accurate representation showing the location of a proposed well. This location may be described as a point 2235 feet south of the north line, and 2058 feet east of the west line of Section 6, Township 16 S Range 42 W of the 6th P.M., GREELEY County, KANSAS. The surface elevation at this point is 3893 feet m.s.l.

Louis B. Harmon



RECEIVED
STATE CORPORATION COMMISSION

DEC 1 9 1985

CONSERVATION DIVISION
Wichita, Kansas

SCALE - 1"=1000'

- SURVEYED POINT
 - REFERENCE STAKE < 75 'S, 200 'E
- NW 1/4 SEC. 6, T 16 S, R 42 W

HARMON
ENGINEERING
SERVICES

EDSALL G#3 (RE-STAKE)

TXO PRODUCTION CORP

GREELEY CO., KANSAS 29 JULY 1985

CARD MUST BE TYPED

State of Kansas
NOTICE OF INTENTION TO DRILL
(see rules on reverse side)

CARD MUST BE SIGNED

Starting Date: 08 04 85
month day year

API Number 15- 071-20,377-0000

OPERATOR: License # 5171
Name TXO Production Corp.
Address 1800 Lincoln Center Bldg.
City State Zip Denver, CO 80264
Contact Person Frank Tsuru
Phone 303-861-4246

SE SE NW Sec 6 Twp 16 S, Rge 42 East
(location) West

2970 Ft North from Southeast Corner of Section
2970 Ft West from Southeast Corner of Section
(Note: Locate well on Section Plat on reverse side)

CONTRACTOR: License # ~~5033~~ 5421
Name Murfin Drilling Company
City State Wichita, KS

Nearest lease or unit boundary line 330 feet.

County Greeley

Lease Name Edsall "G" Well# 3

Domestic well within 330 feet: yes no

Municipal well within one mile: yes no

Well Drilled For: Well Class: Type Equipment:
X Oil Swd Infield Mud Rotary
Gas Inj Pool Ext. Air Rotary
 OWWO Expl Wildcat Cable

Depth to Bottom of fresh water 400 feet

Lowest usable water formation Cheyenne DAK

Depth to Bottom of usable water 1700 feet

Surface pipe by Alternate: 1 2

Surface pipe to be set 450-475 feet

Conductor pipe if any required none feet

Ground surface elevation 3859 feet MSI.

This Authorization Expires 1-30-86

Approved By 7-30-85 KC

If OWWO: old well info as follows:

Operator

Well Name

Comp Date Old Total Depth

Projected Total Depth 5300 feet

Projected Formation at TD Miss

Expected Producing Formations Morrow

I certify that we will comply with K.S.A. 55-101, et seq., plus eventually plugging hole to K.C.C. specifications.

7-29-85

Signature of Operator or Agent

David L. Murfin, Agent for Operator

Title

PRODUCTION STRING WILL BE
CEMENTED IMMEDIATELY FOR BELOW

Drilling Manager

Form 6-7-84

WATER TO SURFACE.

Spud 8-3-85 eve. Set 450' -

RECEIVED
STATE CONSERVATION COMM 310

AUG 20 1985

CONSERVATION DIVISION
Wichita, Kansas

FORMATION TESTERS, INC.

Operator
Ticket No. 106
Date 8/16/85
TEXAS OIL & GAS CORP.
Well Name & No. Edsall 1 "G" #3
Location SE/SE/NW S-6 T-16S R-42W
County, State Greeley, Kansas
Interval 5148' - 5190'
DST No. 1
Morrow

Contractor Sage Drilling
Rig No. 1
Spot SE/SE/NW
Sec. 16
Twp. 16 S
Rng. 42 W
Field --
County Greeley
State Kansas
Elevation 3903' KB
Formation Morrow

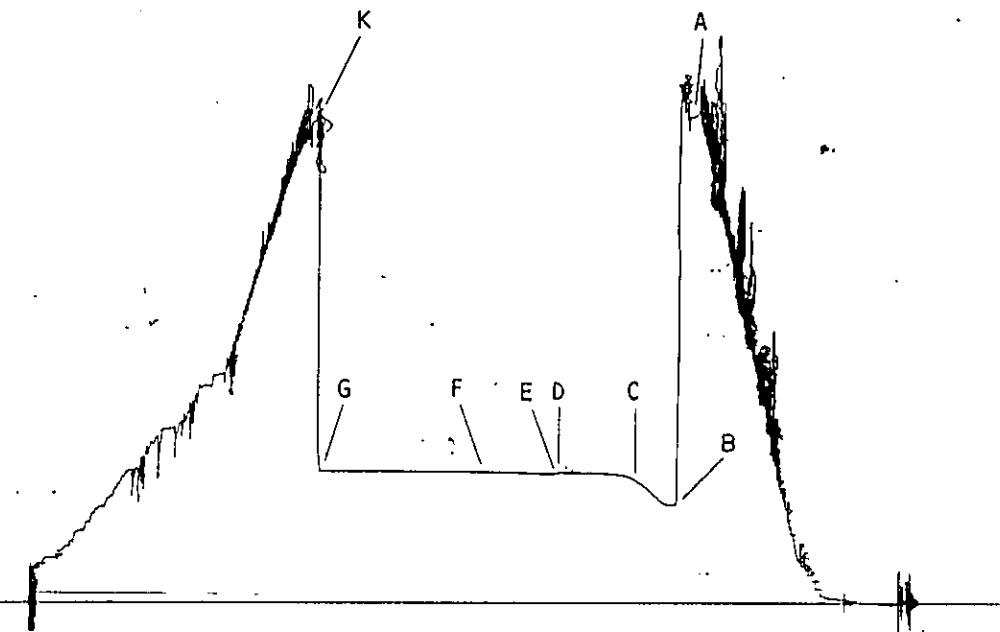
Surface Choke 1"
Bottom Choke 3/4"
Hole Size 7 7/8"
Core Hole Size --
DP Size & Wt. 4 1/2"
Wt. Pipe --
I.D. of DC 2 1/4"
Length of DC 467'
Total Depth 5280'
Type Test Straddle
Interval 5148' - 5190'

Mud Type --
Weight 9.0+
Viscosity 60
Water Loss 8.0
Filter Cake --
Resistivity 1.81 @ 66 of
3285 Ppm. NaCl
B.H.T. 124 of
Co. Rep. Tom Brock
Tester Rick Elliott

	REPORTED	CORRECTED	
Opened Tool @	02:40		hrs.
Flow No. 1	30	29	min.
Shut-in No. 1	60	60	min.
Flow No. 2	60	60	min.
Shut-in No. 2	120	119	min.
Flow No. 3	None Taken		min.
Shut-in No. 3	"	"	min.

Recorder Type Kuster AK-1
No. 13337 Cap. 3975 psi
Depth 5185 feet
Inside Outside X

Initial Hydrostatic	A	2491.8
Final Hydrostatic	K	2481.3
Initial Flow	B	503.6
Final Initial Flow	C	611.2
Initial Shut-in	D	659.1
Second Initial Flow	E	659.4
Second Final Flow	F	655.1
Second Shut-in	G	660.0
Third Initial Flow	H	
Third Final Flow	I	
Third Shut-in	J	



Pipe Recovery: 2450' Total fluid = 30.45 bbl.
1940' Oil = 27.55 bbl.
210' 17% mud, 50% oil, 33% gas = 1.43 bbl.
180' 25% mud, 70% oil, 5% gas = 0.88 bbl.
120' 90% mud, 7% oil, 3% gas = 0.59 bbl.

Resistivity:
Bottom: 1.57 @ 79.3°F - 1.03 @ Res Temp = 3,197 ppm NaCl., 1,944 ppm Cl.

1st Flow: Tool opened with a strong blow, increased to bottom of bucket in 2 minutes. Gas to surface in 16 minutes; see gas volume report.

2nd Flow: Tool opened with gas to surface; see gas volume report.

RECEIVED
STATE CORPORATION COMMISSION
AUG 27 1985
CONSERVATION DIVISION
Wichita, Kansas

FORMATION TESTERS, INC.

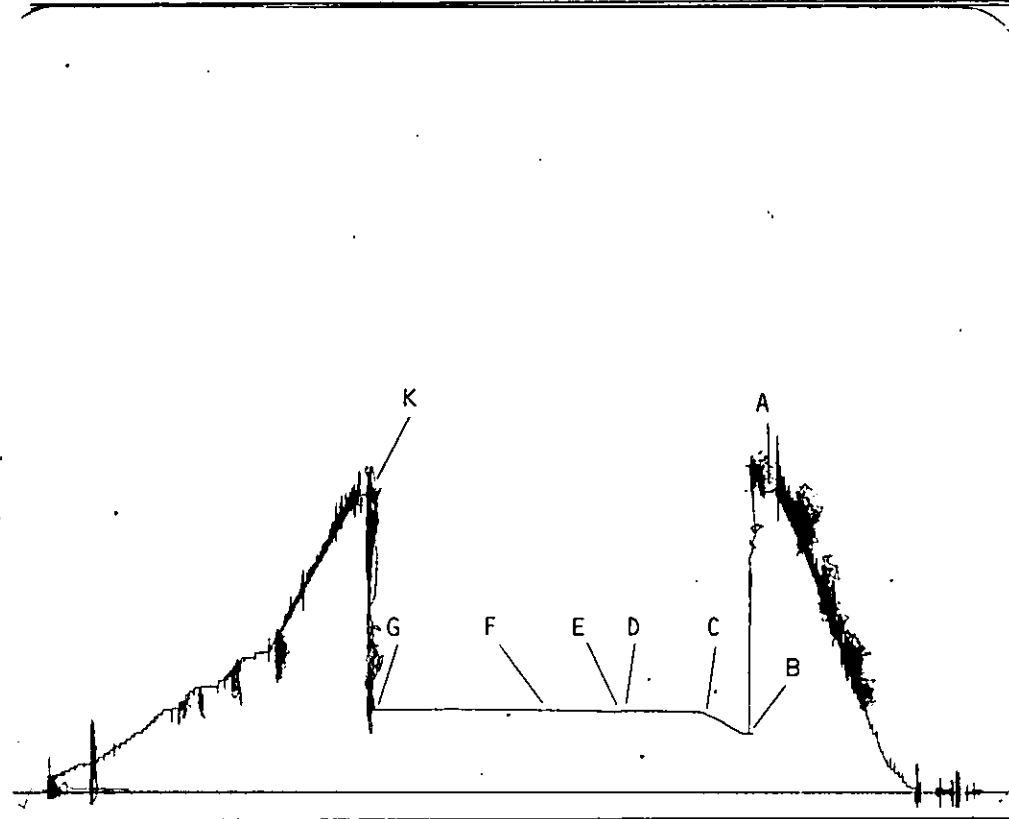
Texas Oil & Gas Corp.
Operator

Edsall "G" #3
Well Name and No.

1
DST No.

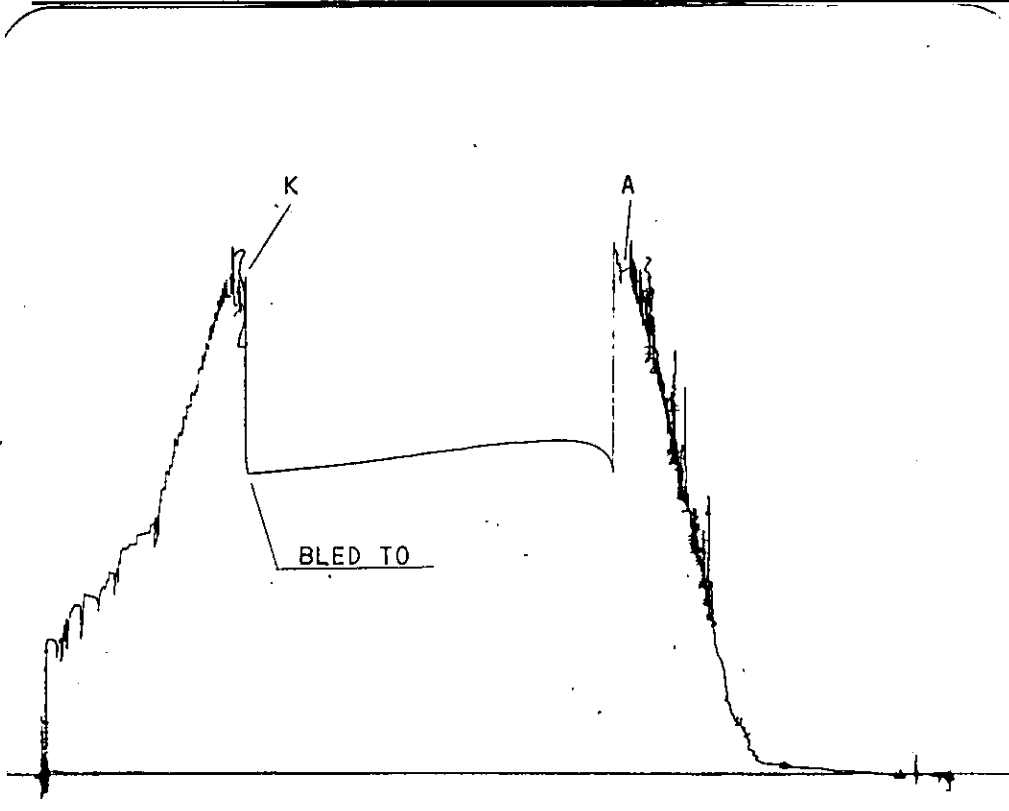
Recorder Type Kuster AK-1
No. 5497 Cap. 6550 psi
Depth 5129 feet
Inside X Outside

Initial Hydrostatic	A	<u>2484.8</u>
Final Hydrostatic	K	<u>2474.5</u>
Initial Flow	B	<u>465.5</u>
Final Initial Flow	C	<u>620.9</u>
Initial Shut-in	D	<u>654.4</u>
Second Initial Flow	E	<u>645.8</u>
Second Final Flow	F	<u>660.5</u>
Second Shut-in	G	<u>668.5</u>
Third Initial Flow	H	_____
Third Final Flow	I	_____
Third Shut-in	J	_____



Recorder Type Kuster AK-1
No. 13339 Cap. 4000 psi
Depth Below Straddle feet
Inside Outside X

Initial Hydrostatic	A	<u>2623.4</u>
Final Hydrostatic	K	<u>2533.2</u>
Initial Flow	B	_____
Final Initial Flow	C	_____
Initial Shut-in	D	_____
Second Initial Flow	E	_____
Second Final Flow	F	_____
Second Shut-in	G	_____
Third Initial Flow	H	_____
Third Final Flow	I	_____
Third Shut-in	J	_____



Bled To 1562.1

RECEIVED
STATE CORPORATION COMMISSION

AUG 27 1965

CONSERVATION DIVISION
Wichita, Kansas

GAS VOLUME REPORT

Texas Oil & Gas Corp.
Operator

Edsall "G" #3
Well Name and No.

1
DST No.

1st Flow:

2nd Flow:

Min.	PSIG	Orifice Size	MCF/D	Min.	PSIG	Orifice Size	MCF/D
20	22.0	1/4"	7.88	0	4.00	1/8"	1.06
30	42.0	"	10.90	10	7.00	"	1.39
				20	20.00	"	2.36
				30	8.00	"	10.10
				40	8.00	"	10.10
				50	8.00	"	10.10
				60	6.00	"	1.29

Remarks: Gas to surface 16 minutes into the initial flow period.

RECEIVED
 STATE CORPORATION COMMISSION
 AUG 27 1955
 CONSERVATION DIVISION
 Wichita, Kansas

FORMATION TESTERS, INC.

SAMPLER REPORT

Company Texas Oil & Gas Corp. Date 8/16/85
Well Name & No. Edsall "G" #3 Ticket No. 106
County Greeley State Kansas
Test Interval 5148' - 5190 DST No. 1

Pressure in Sampler: 500 psig
Total Volume of Sampler: 2200 cc.
Total Volume of Sample: 1800 cc.
Oil: 1800 cc.
Water: None cc.
Mud: None cc.
Gas: 1.2 cu. ft.
Other: None

Resistivity

Make Up Water _____ @ _____ °F of Chloride Content _____ ppm.
Mud Pit Sample 1.81 @ 66 °F of Chloride Content 3285 ppm.
Gas/Oil Ratio 107-1 cu. ft./bbl. Gravity 38.0 °API @ 60 °F

Where was sample drained On Location

Remarks: _____

RECEIVED
STATE CORPORATION COMMISSION

AUG 27 1985

CONSERVATION DIVISION
Wichita, Kansas

FORMATION TESTERS, INC.

Texas Oil & Gas Corp.
Operator

Edsall "G" #3
Well Name and No.

1
DST No.

RECORDER NO. 13337 DEPTH 5185 FT.

INITIAL SHUT-IN

INITIAL FLOW TIME: T = 29 MIN.

<u>DT(MIN)</u>	<u>LOG((T+DT)/DT)</u>	<u>PRESSURE(P SIG)</u>	<u>DP(P SIG)</u>
0		611.2	0.0
4	.916	631.1	19.9
8	.665	642.0	30.8
12	.534	648.5	37.3
16	.449	652.4	41.1
20	.389	654.6	43.4
24	.344	656.5	45.3
28	.309	657.5	46.3
32	.280	658.0	46.8
36	.257	658.2	47.0
40	.237	658.5	47.3
44	.220	658.7	47.5
48	.205	658.9	47.7
52	.192	659.1	47.8
56	.181	659.3	48.1
60	.171	659.4	48.2

EXTRAPOLATED PRESSURE: 661.6 PSI
SLOPE: 13.0 PSI/LOG CYCLE
POINTS USED: 8

RECEIVED
STATE CORPORATION COMMISSION

AUG 27 1955

CONSERVATION DIVISION
Wichita, Kansas

FORMATION TESTERS, INC.

Texas Oil & Gas Corp.
Operator

Edsall "G" #3
Well Name and No.

1
DST No.

RECORDER NO. 13337 DEPTH 5185 FT.

FINAL SHUT-IN

TOTAL FLOW TIME: T = 89 MIN.

<u>DT(MIN)</u>	<u>LOG((T+DT)/DT)</u>	<u>PRESSURE(PSIG)</u>	<u>DP(PSIG)</u>
0		659.0	0.0
5	1.274	659.2	.2
10	.996	659.2	.2
15	.841	659.4	.3
20	.736	659.4	.4
25	.659	659.5	.5
30	.598	659.6	.6
35	.549	659.6	.6
40	.509	659.6	.6
45	.474	659.6	.5
50	.444	659.6	.6
55	.418	659.6	.6
60	.395	659.7	.7
70	.356	659.8	.8
80	.325	659.8	.8
90	.299	659.8	.8
100	.276	659.8	.8
110	.257	659.9	.8
119	.243	660.0	1.0

EXTRAPOLATED PRESSURE: 660.1 PSI
SLOPE: .9 PSI/LOG CYCLE
POINTS USED: 17

RECEIVED
STATE CORPORATION COMMISSION

AUG 27 1965

CONSERVATION DIVISION
Wichita, Kansas

HORNER PLOT

Texas Oil & Gas Corp.
Edsall "G" #3, DST #1
Interval: 5148' - 5190'

Recorder No. 13337 @ 5185'

$P_{si} = 661.6$ psi

$P_{sf} = 660.1$ psi

690
680
670
660
650
640
630
620

PRESSURE (PSI)

$((T+DT)/DT)$

100.0 10.0 1.0

RECEIVED
STATE CORPORATION COMMISSION

AUG 27 1955

CONSERVATION DIVISION
Wichita, Kansas

F S I

I S I

FORMATION TESTERS, INC.

DISTRIBUTION OF FINAL REPORTS

Texas Oil & Gas Corp.
Operator

Edsall "G" #3
Well Name and No.

TEXAS OIL & GAS CORP. 2
ATTN PAT CLIFFORD
1700 PACIFIC AVE. LB-10
DALLAS TX 75201

TXO PRODUCTION CORP. 1
ATTN HOWARD GORDON
1660 LINCOLN ST. SUITE 1800
DENVER CO 80264

APCOT-FINADEL JOINT VENTURE 2
ATTN HOUSTON WELCH
P.O. BOX 2159
DALLAS TX 75201

KANSAS STATE CORP. COMM. 1
202 W. 1ST ST. #202
WICHITA KS 67202

TXO PRODUCTION CORP. 1
ATTN JERRY DAMRON
P.O. BOX 1155
LAMAR CO 81052

RECEIVED
STATE CORPORATION COMMISSION

AUG 27 1985

CONSERVATION DIVISION
Wichita, Kansas

15001-20377-0000

FORMATION TESTERS, INC.



P.O. BOX 427 / LAMAR, COLORADO 81052
303 / 336-5413