



KANSAS CORPORATION COMMISSION 1079759
OIL & GAS CONSERVATION DIVISION

Form ACO-1
June 2009
Form Must Be Typed
Form must be Signed
All blanks must be Filled

WELL COMPLETION FORM
WELL HISTORY - DESCRIPTION OF WELL & LEASE

OPERATOR: License # 3273
Name: HERMAN L. LOEB, LLC
Address 1: PO BOX 838
Address 2: _____
City: LAWRENCEVILLE State: IL Zip: 62439 + _____
Contact Person: Jesse R. Middagh
Phone: (618) 943-2227
CONTRACTOR: License # 5142
Name: Sterling Drilling Company
Wellsite Geologist: Jon Christensen
Purchaser: Plains Marketing

Designate Type of Completion:

New Well Re-Entry Workover

Oil WSW SWD SIOW
 Gas D&A ENHR SIGW
 OG GSW Temp. Abd.
 CM (Coal Bed Methane)
 Cathodic Other (Core, Expl., etc.): _____

If Workover/Re-entry: Old Well Info as follows:

Operator: _____
Well Name: _____
Original Comp. Date: _____ Original Total Depth: _____
 Deepening Re-perf. Conv. to ENHR Conv. to SWD
 Conv. to GSW
 Plug Back: _____ Plug Back Total Depth _____
 Commingled Permit #: _____
 Dual Completion Permit #: _____
 SWD Permit #: _____
 ENHR Permit #: _____
 GSW Permit #: _____

<u>02/10/2012</u>	<u>02/18/2012</u>	<u>03/14/2012</u>
Spud Date or Recompletion Date	Date Reached TD	Completion Date or Recompletion Date

API No. 15 - 15-009-25655-00-00

Spot Description: _____
S2 NE NW SW Sec. 19 Twp. 20 S. R. 13 East West
2306 Feet from North / South Line of Section
990 Feet from East / West Line of Section

Footages Calculated from Nearest Outside Section Corner:
 NE NW SE SW

County: Barton
Lease Name: Panning Well #: 1-19
Field Name: Pritchard North
Producing Formation: Arbuckle
Elevation: Ground: 1885 Kelly Bushing: 1894
Total Depth: 3600 Plug Back Total Depth: _____
Amount of Surface Pipe Set and Cemented at: 792 Feet
Multiple Stage Cementing Collar Used? Yes No
If yes, show depth set: _____ Feet
If Alternate II completion, cement circulated from: _____
feet depth to: _____ w/ _____ sx cmt.

Drilling Fluid Management Plan
(Data must be collected from the Reserve Pit)

Chloride content: 5500 ppm Fluid volume: 706 bbls
Dewatering method used: Evaporated
Location of fluid disposal if hauled offsite: _____
Operator Name: _____
Lease Name: _____ License #: _____
Quarter _____ Sec. _____ Twp. _____ S. R. _____ East West
County: _____ Permit #: _____

AFFIDAVIT

I am the affiant and I hereby certify that all requirements of the statutes, rules and regulations promulgated to regulate the oil and gas industry have been fully complied with and the statements herein are complete and correct to the best of my knowledge.

Submitted Electronically

KCC Office Use ONLY

Letter of Confidentiality Received
Date: _____
 Confidential Release Date: _____
 Wireline Log Received
 Geologist Report Received
 UIC Distribution
ALT I II III Approved by: Deanna Gorriz Date: 09/06/2012



1079759

Operator Name: HERMAN L. LOEB, LLC Lease Name: Panning Well #: 1-19
 Sec. 19 Twp. 20 S. R. 13 East West County: Barton

INSTRUCTIONS: Show important tops and base of formations penetrated. Detail all cores. Report all final copies of drill stems tests giving interval tested, time tool open and closed, flowing and shut-in pressures, whether shut-in pressure reached static level, hydrostatic pressures, bottom hole temperature, fluid recovery, and flow rates if gas to surface test, along with final chart(s). Attach extra sheet if more space is needed. Attach complete copy of all Electric Wire-line Logs surveyed. Attach final geological well site report.

Drill Stem Tests Taken (Attach Additional Sheets)	<input checked="" type="checkbox"/> Yes <input type="checkbox"/> No	<input checked="" type="checkbox"/> Log	Formation (Top), Depth and Datum	<input type="checkbox"/> Sample
Samples Sent to Geological Survey	<input type="checkbox"/> Yes <input checked="" type="checkbox"/> No	Name Attached	Top Attached	Datum Attached
Cores Taken	<input type="checkbox"/> Yes <input checked="" type="checkbox"/> No			
Electric Log Run	<input checked="" type="checkbox"/> Yes <input type="checkbox"/> No			
Electric Log Submitted Electronically (If no, Submit Copy)	<input checked="" type="checkbox"/> Yes <input type="checkbox"/> No			
List All E. Logs Run:				
Dual Induction NEU/DEN w/PE Microlog				

CASING RECORD <input checked="" type="checkbox"/> New <input type="checkbox"/> Used							
Report all strings set-conductor, surface, intermediate, production, etc.							
Purpose of String	Size Hole Drilled	Size Casing Set (In O.D.)	Weight Lbs. / Ft.	Setting Depth	Type of Cement	# Sacks Used	Type and Percent Additives
Surface	12.25	8.625	24.0	792	Basic	400	Ticket # 05233A
Production	7.875	5.5	15.5	3591	Loeb Blend	85	Ticket # 05810A

ADDITIONAL CEMENTING / SQUEEZE RECORD				
Purpose:	Depth Top Bottom	Type of Cement	# Sacks Used	Type and Percent Additives
<input type="checkbox"/> Perforate				
<input type="checkbox"/> Protect Casing	-			
<input type="checkbox"/> Plug Back TD				
<input type="checkbox"/> Plug Off Zone	-			

Shots Per Foot	PERFORATION RECORD - Bridge Plugs Set/Type Specify Footage of Each Interval Perforated	Acid, Fracture, Shot, Cement Squeeze Record (Amount and Kind of Material Used)	Depth
3	7 Feet, 21 Shots	Shot	3514 - 3521
3	3 Feet, 9 Shots	Shot	3526 - 3529
3	3 Feet, 9 Shots	Shot	3533 - 3536
3	4 Feet, 12 Shots	Shot	3542 - 3546
		1000g Acid Job 15% MCA	

TUBING RECORD:	Size:	Set At:	Packer At:	Liner Run: <input type="checkbox"/> Yes <input checked="" type="checkbox"/> No
Date of First, Resumed Production, SWD or ENHR. 08/07/2012	Producing Method: <input type="checkbox"/> Flowing <input checked="" type="checkbox"/> Pumping <input type="checkbox"/> Gas Lift <input type="checkbox"/> Other (Explain) _____			
Estimated Production Per 24 Hours	Oil Bbls. 11	Gas Mcf	Water Bbls. 275	Gas-Oil Ratio Gravity

DISPOSITION OF GAS: <input type="checkbox"/> Vented <input type="checkbox"/> Sold <input type="checkbox"/> Used on Lease (If vented, Submit ACO-18.)	METHOD OF COMPLETION: <input type="checkbox"/> Open Hole <input checked="" type="checkbox"/> Perf. <input type="checkbox"/> Dually Comp. <input type="checkbox"/> Commingled (Submit ACO-5) (Submit ACO-4)	PRODUCTION INTERVAL: 3514 - 3546
<input type="checkbox"/> Other (Specify) _____		

Form	ACO1 - Well Completion
Operator	HERMAN L. LOEB, LLC
Well Name	Panning 1-19
Doc ID	1079759

Tops

Chase	1734	160
Tarkio LMST	2596	-702
Tarkio SS	2626	-732
Howard	2792	-898
Topeka	2868	-974
Queen Hill Shale	3043	-1149
Heebner Shale	3138	-1244
Toronto	3156	-1262
Douglas Shale	3173	-1279
Brown LMST	3252	-1358
Lansing 'A'	3262	-1368
Base Kansas City	3490	-1596
Conglomerate	3498	-1604
Arbuckle	3510	-1616

LITHOLOGY STRIP LOG

WellSight Systems

Scale 1:240 (5"=100') Imperial

Well Name: Panning #1-19
Location: 2306' FSL & 990' FWL, Sec. 19-T20S-R13W, Barton Co., KS.
Licence Number: 15-009-25655-0000
Spud Date: 2/10/2012
Surface Coordinates: 2306' FSL & 990' FWL, Sec. 19-T20S-R13W
Region: Pritchard North
Drilling Completed: 2/18/12

Bottom Hole Same as above
Coordinates:
Ground Elevation (ft): 1885' K.B. Elevation (ft): 1894'
Logged Interval (ft): 1700' To: 3600' Total Depth (ft): 3600'
Formation: Arbuckle at Total Depth.
Type of Drilling Fluid: Freshwater/Gel to 2566'; Chemical Gel 2566' to 3600'

Printed by MUD.LOG from WellSight Systems 1-800-447-1534 www.WellSight.com

OPERATOR

Company: Herman L. Loeb, LLC.
Address: P.O. Box 838
Lawrenceville, IL. 62439-0838

GEOLOGIST

Name: Jon D. Christensen
Company: Consulting Petroleum Geologist
Address: 9002 W. Silver Hollow St.
Wichita, KS. 67205-8856

Cores

None Taken

DSTs

DST #1(Lansing 'A') 3266' - 3281'(Corrected Depths to Log) Test Times 15"-45"-30"-60" IFP Weak 0.5" Blow, FFP Weak 0.75" Blow, no Blowback on SI's; REC: 3' VSOCM(1%O, 99%M), no water; IFP 12-19#, ISIP 68#, FFP 13-19#, FSIP 44#, IHP 1663#, FHP 1510#, BHT 103 Deg. F.

DST #2(Lansing 'B' - 'E' zones) 3282' - 3338'(Corrected Depths to Log) Test Times 15"-45"-45"-90" IFP Fair 4" Blow, FFP Fair Blow building to Strong Blow BOB/31", no Blowback on SI's; REC: 620' Gas in Pipe, 61' GWM w/few oil specks(2%G, 10%W, 88%M)CI 87,000, Mud 5000; IFP 20-28#, ISIP 673#, FFP 29-49#, FSIP 629#, IHP 1672#, FHP 1713#, BHT 102 Deg. F.

DST #3(KC. 'I' & 'J' zones) 3409' - 3430'(Corrected Depths to Log) Test Times 15"-45"-30"-60" IFP Weak Surface Blow, FFP Weak Surface Blow, no Blowback on SI's; REC: 2' Drilling Mud, no Shows; IFP 18-24#, ISIP 188#, FFP 21-23#, FSIP 67#, IHP 1620#, FHP 1649#, BHT 103 Deg. F.

DST #4(Arbuckle) 3515' - 3537'(Corrected Depths to Log) Test Times 15"-45"-60"-90" IFP Fair 3.5" Blow, FFP No Blow - Flush tool - Good Surge - Fair Blow built to 10", no Blowback on SI's; REC: Trc. Gas in Pipe, 230' GOCM(avg. 2%G, 12%O, 86%M), no Water; IFP 33-49#, ISIP 1166#, FFP 52-128#, FSIP 1127#, IHP 1747#, FHP 1683#, BHT 107 Deg. F.

Comments

2/10/12 MIRU Sterling Drilling Co. Rig #4, Spud at 7:30 PM.; 2/11/12 Drilling at 500'; 2/12/12 TD. 795' - WOC; 2/13/12 Drilling at 1950'; 2/14/12 Drilling at 2640'; 2/15/12 TD. 3283' - Short trip for DST #1; 2/16/12 TD. 3340' - DST #2; 2/17/12 Drilling at 3455'; 2/18/12 RTD. 3600' - Reached TD. at 4:10 AM., TOH for Logs; 2/19/12 RTD. 3600'/LTD. 3600' Production Casing set - Tear down rig.

Set new 8 5/8"(24#) Surface Casing at 792' w/ 400 sx. Cement did Circulate to Cellar(Basic Energy Services). PD. 10:30 PM. 2/11/12.

Set new 5 1/2"(15.5#) Production Casing at 3591' w/ 85 sx. of "Loeb Blend". PD. 3:45 AM. 2/19/12. Port Collar at 2728'.

Surveys: 0.75 Deg. at 795'(Surface Casing); 0.75 Deg. at 3283'(DST #1); 0.75 Deg. at 3432'(DST #3); 0.75 Deg. at 3600' RTD.

Pipe Strap at 3283'(DST #1): Strap 0.32' Short to the Board, no correction made to the Board.

After review of the Superior Well Services Logs, DST data, structural position, and positive shows of commercial amounts of hydrocarbons, the operator elected to set new 5 1/2" Production Casing for completion in the Arbuckle.

LOG TOPS: Chase(Herington) 1734(+160), Stotler/Tarkio Lmst. 2596(-702), Tarkio SS 2626(-732), Howard 2792(-898), Topeka 2868(-974), Queen Hill Shale 3043(-1149), Heebner Shale 3138(-1244), Toronto 3156(-1262), Douglas Shale 3173(-1279), Brown Lmst. 3252(-1358), Lansing 'A' 3262(-1368), Base Kansas City 3490(-1596), Conglomerate 3498(-1604), Arbuckle 3510(-1616).

Prior to abandonment of the Panning #1-19, the Tarkio Sand should be perforated and tested from 2626' - 2632' due to gas kick and oil shows. Also, the Falls City Lmst. should be perforated and tested from 2440' - 2442' due to the gas kick. Also, the upper Chase Herington and Krider zones should be perforated and tested from 1736' - 1746', and 1758' - 1764', respectively, based on the gas kicks observed while drilling.

NOTE: This log was shifted upward by 1' - 2' for correlation purposes with the Superior Well Services Logs.

ROCK TYPES

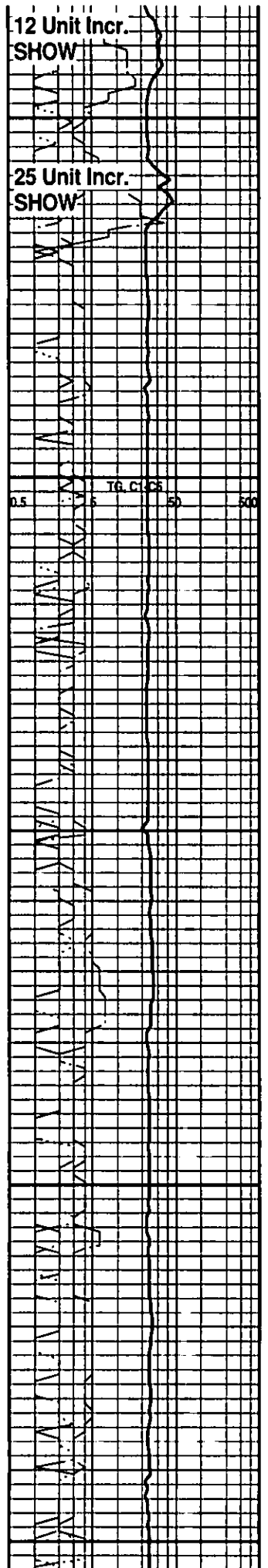
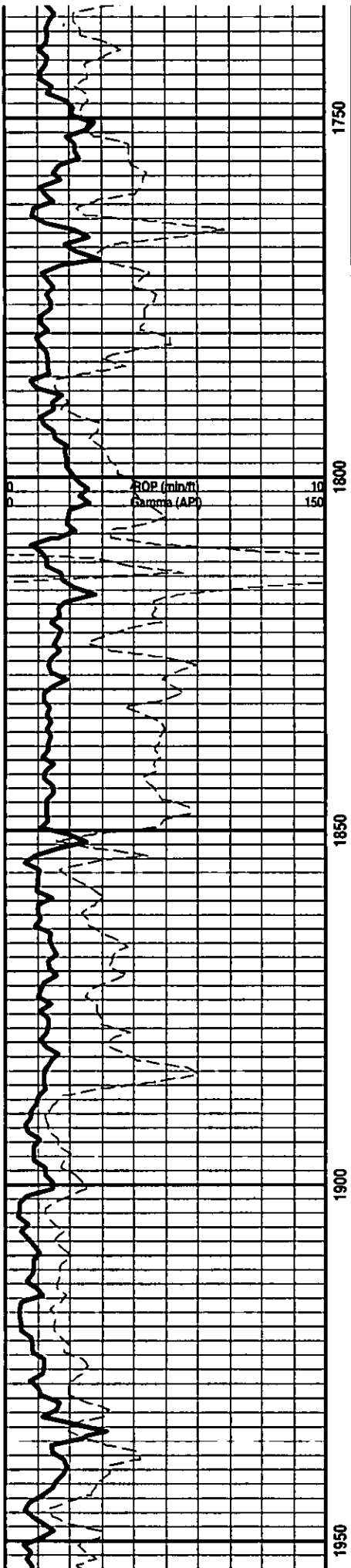
 Anhy  Bent  Brec  Cht	 Clyst  Coal  Congl  Dol	 Gyp  Igne  Lmst  Meta	 Mrlst  Salt  Shale  Shcol	 Shgy  Sltst  Ss  Till
---	---	---	---	---

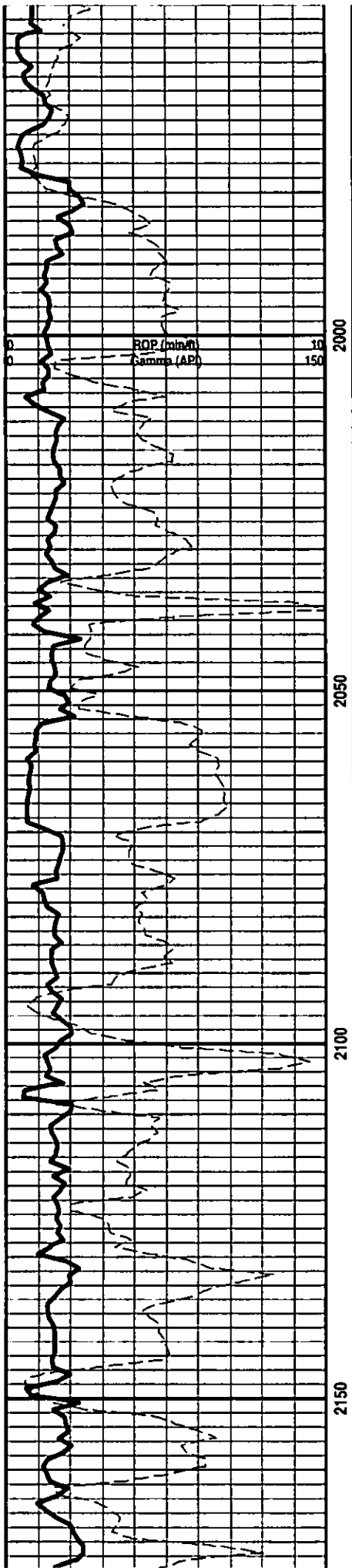
CHASE(Nerington) 1734(+100)

CHASE(Krider) 1756(+138)

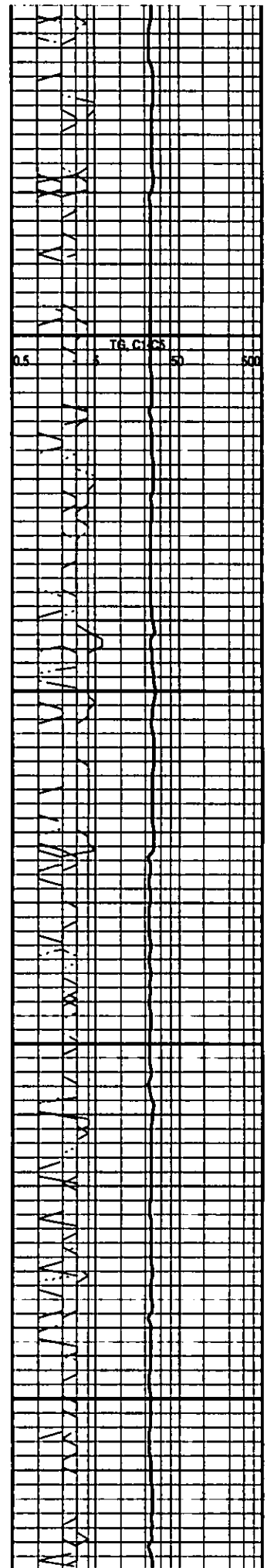
12 Unit Incr.
SHOW

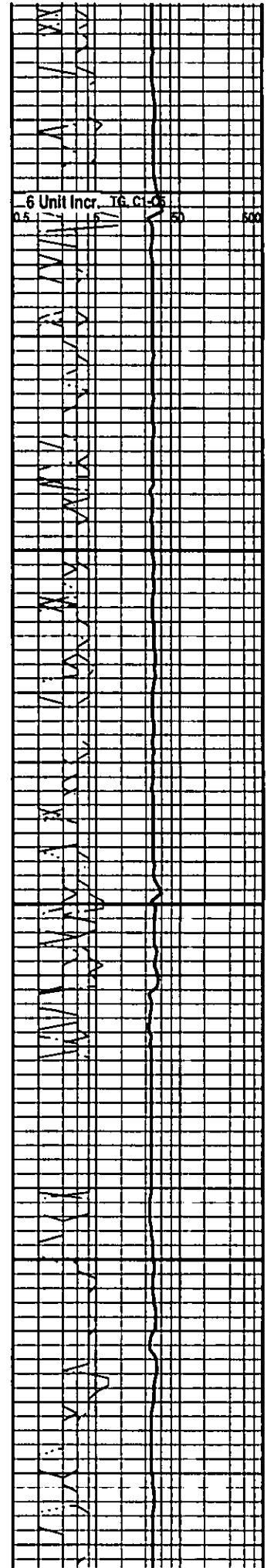
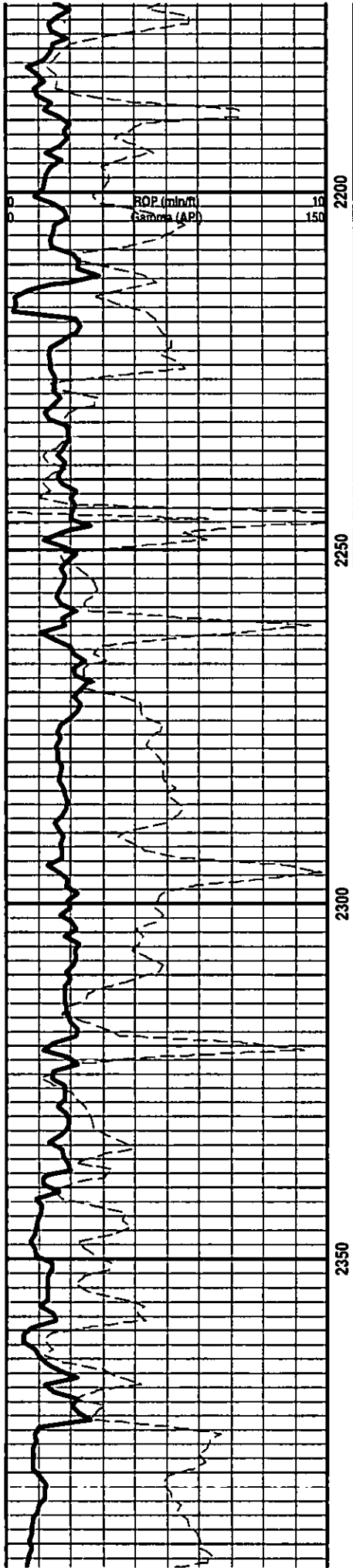
25 Unit Incr.
SHOW

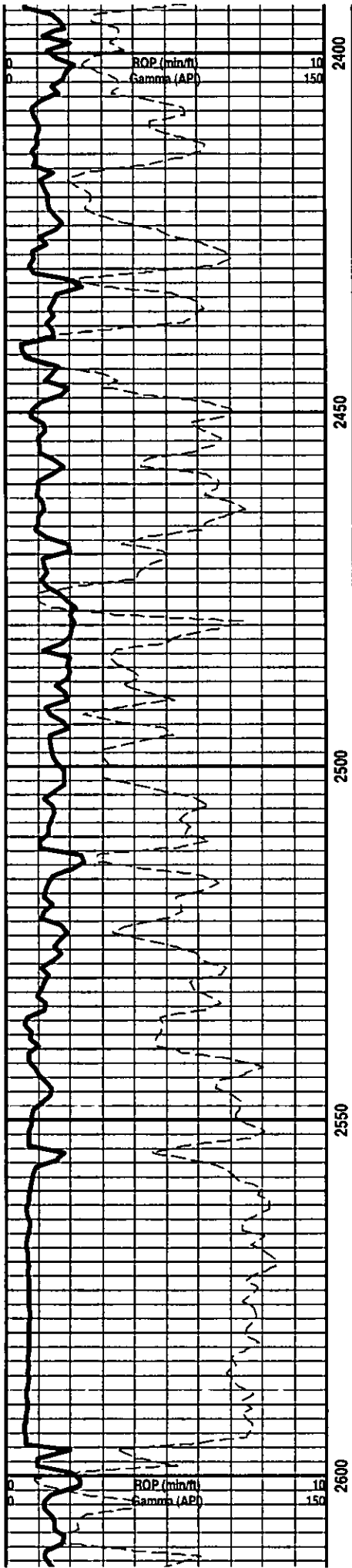




COUNCIL GROVE 2054(-160)



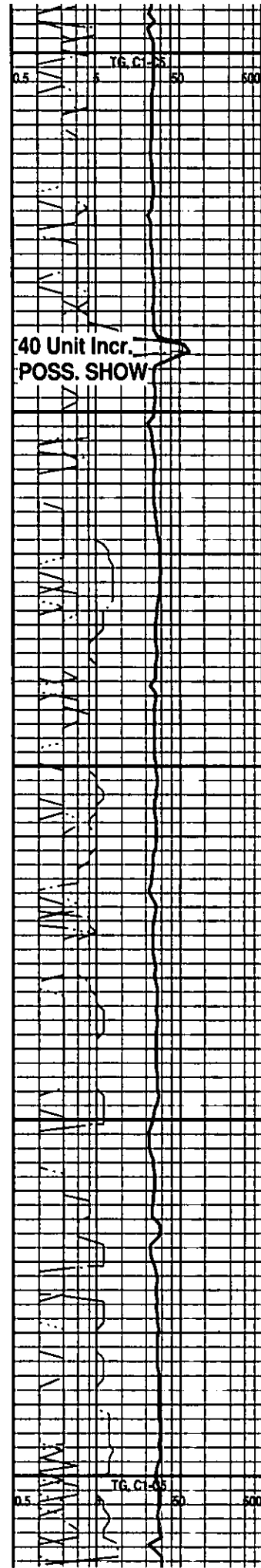




FALLS CITY LMST. 2438(-544)

Displace Mud System at 2566'

STOTLER/TARKIO LMST. 2596(-702)



40 Unit Incr.
POSS. SHOW

TARKIO SAND 2626(-732)

TRC. of SS, fg qtz, SFO, good intergran por, live gassy oil, faint odor, brite yel fluor (this sand was found in a lower sample)

58 Unit Incr. SHOW

10' Wet and Dry Samples start at 2700'

LM; off wh, tan, cream, foss ip, scat fair interpart por, med yel min fluor, no stn or odor, no gas kick, ns.

SH; gm, gy gm, soft, silty ip.

LM; lt to med brn, hd, most blocky, micritic, tite

SH; med gy, occ dk gy, firm

LM; med brn, occ gy brn, foss ip, scat small foss pellets, most well cem, med yel min fluor, no stn or odor, ns.

LM; med gy, hd, foss ip, tite

SH; med gy, fiss, smooth, occ silty

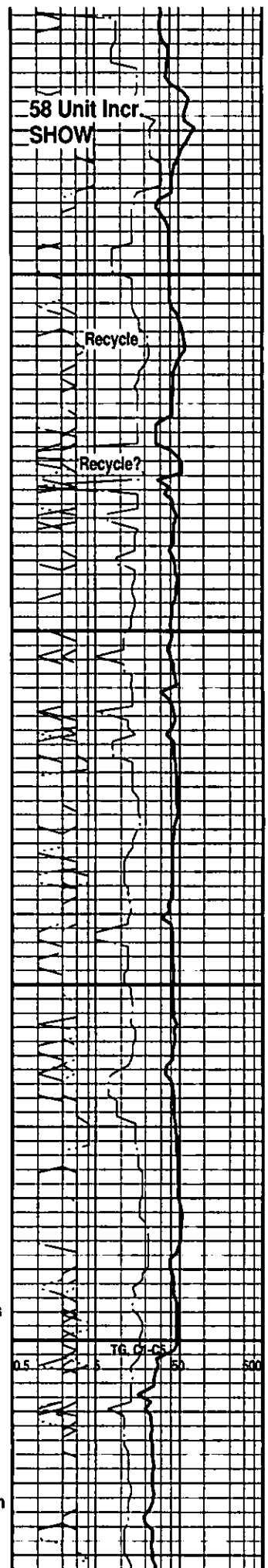
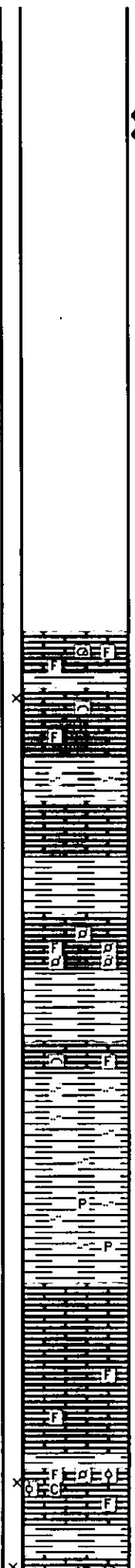
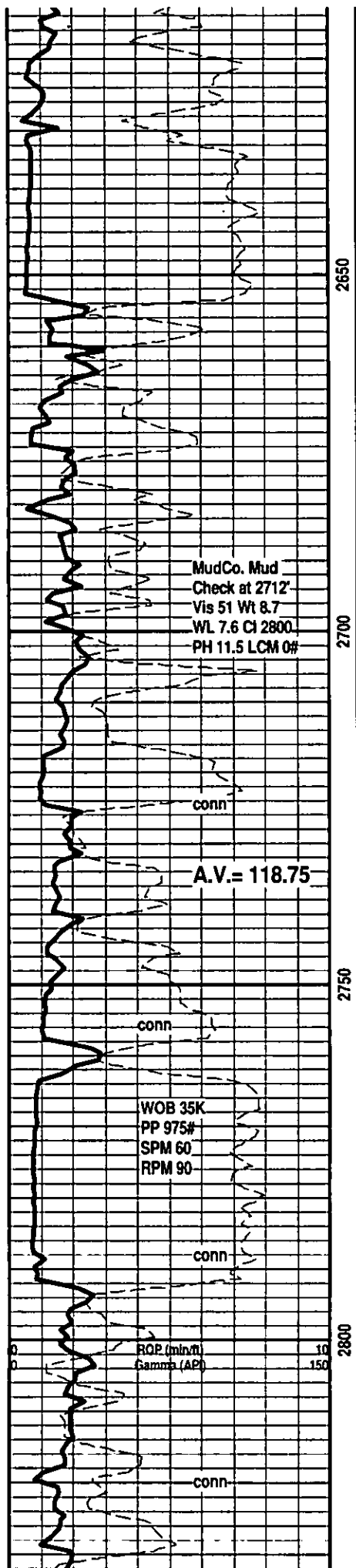
SH; med to dk gy, fiss, scat dissem pyr, occ foss

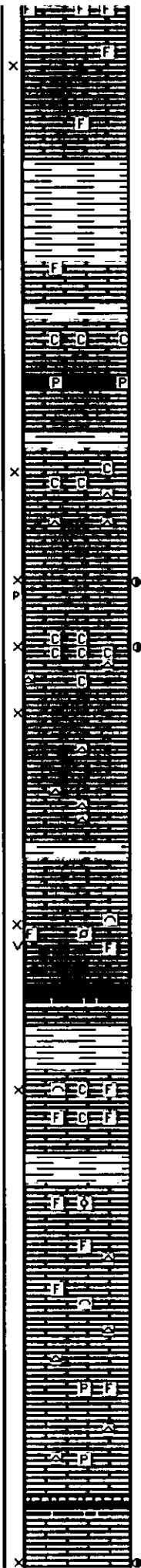
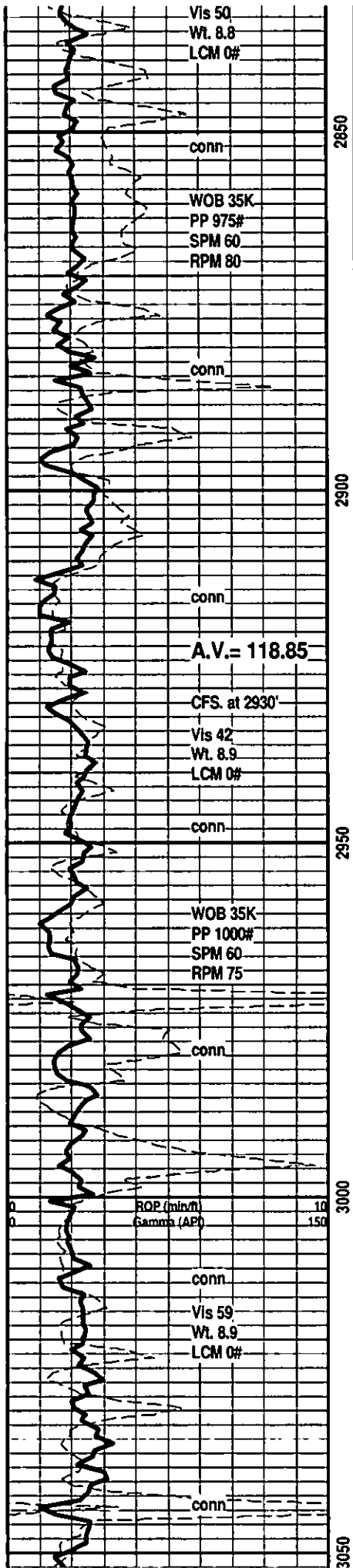
HOWARD 2792(-898)

LM; med gy, gy brn, tan, most dense, blocky, hd, no vis por, interbdd dh brn dense micrite, no fluor, ns.

LM; med gy brn, med brn, dense, occ well cem foss mat, blocky, no vis por, ns.

LM; tan to buff, cream, foss - pelletal ip, fair interpart por, some partly chalky mtx, lt yel min fluor only, no stn or odor, ns.





LM; tan to lt brn, fxdn w/scat foss mat, poor interpart por, dull yel min fluor only, no stn or odor, ns.

SH; med gy, gm, lmy, firm

TOPEKA 2868(-974)
 LM; lt to med brn, hd, most dense, scat well cem foss mat, no vis por, no stn odor, ns.
 LM; off wh, wh, buff, fxdn, interbdd partly chalky lmst, spotted lt yel min fluor, no stn or odor, no gas kick, ns.
 SH; dk gy/blk, carb ip, occ pyr, thinty bdd

LM; tan to off wh, buff, fxdn, fair interxdn por, minor soft chalky mtx, interbdd hd dense occ cherty micrite, no stn or odor, ns.

LM; off wh, med to occ cse xln, fair interxdn w/occ p-p por, scat med brn spotted oil stn, occ med yel fluor, v. faint odor, poor cut - poor show

LM; off wh, wh, cream, med xln, v. chalky - soft mtx, poor to fair interxdn por, trc dk brn oil stn, most barren, scat lt gy cht

LM; tan to lt brn, foss ip, scat poor interpart por, interbdd gy foss cht, no fluor, no stn or odor, ns.

LM; tan to lt brn, hd, most micritic, scat gy/off wh cht, ns.

LM; tan to cream, off wh, foss, scat fair interpart w/occ vug por, much soft chalky mtx, scat lt yel fluor, no vis stn, no odor, ns.

KING HILL SHALE 2971(-1077)
 SH; dk gy, blk, fiss

LM; tan to off wh, lt brn, foss, interbdd med xln lmst, scat fair interxdn por, occ soft chalky mtx, lt yel min fluor only, no stn or odor, ns.

SH; dk gy, trc blk, platy

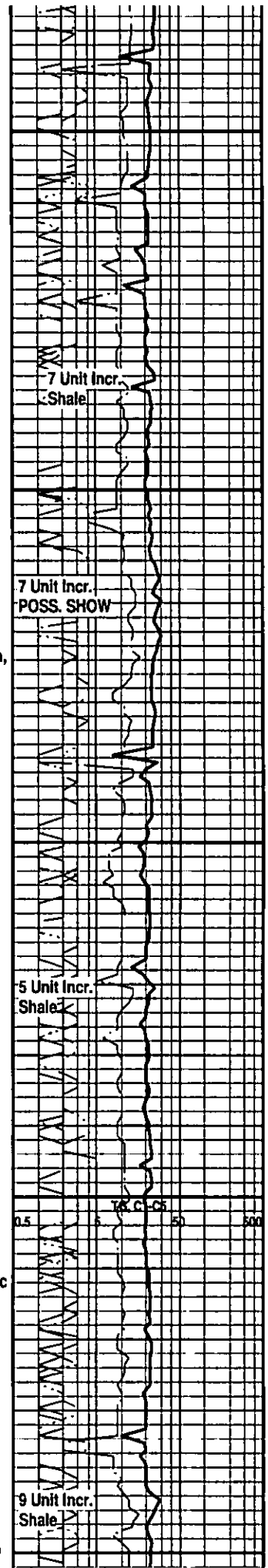
LM; tan to buff, lt brn, fxdn, much dense, occ well cem foss, no fluor, ns.

LM; tan to lt brn, buff, scat foss mat, most well cem, occ cherty w/gy to off wh cht, no vis por, no fluor, ns.

LM; tan to off wh, buff, fxdn to micritic, scat pyr, hd, no vis por, scat lt yel min fluor only, ns.

QUEEN HILL SHALE 3043(-1149)
 SH; blk, carb ip, platy

LM; off wh, tan, foss to finely pelletal, interbdd med xln



partly chalky mst, fair interpart intertan por, few pcs. w/dk brn hvy oil stn, no odor, lt yel fluor, no gas kick

LM; tan to lt brn, most dense, blocky, scat gy to tan cht, no vis por, no fluor, ns.

LM; tan to off wh, foss - finely pelletal, fair to gd interpart por, minor soft chalky mtz, dull to lt yel min fluor only, no stn or odor, ns.

LM; tan to lt brn, buff, most dense, micritic, scat gy to off wh cht, no vis por, ns.

HEEBNER SHALE 3138(-1244)

SH; blk, carb ip, platy

LM; med brn, hd, micritic, tite

SH; lt gy gm, silty, firm to soft, some sticky

TORONTO 3156(-1262)

LM; off wh, tan, foss ip, occ oolitic/pelletal, scat fair p-p and vug por, scat dk brn oil stn, dull to lt yel fluor only, faint odor, fair/gd cut, some bleeding oil, SSFO, por. looks discontinuous, poor/fair show

DOUGLAS SHALE 3173(-1279)

SH; lt gy to gm, silty, interbdd vf gr qtz ss and shaly ss

SLTST; lt gy, firm, platy, occ mica

SS; lt gy, vf to fgr qtz, mica, dirty - argil, poor intergran por, no stn, ns.

SH; lt gy, silty, soft, some sticky, platy, interbdd vf gr qtz occ mica tite ss, ns.

SH; med to occ dk gy, platy to flakey, most smooth, rarely silty

BROWN LMST. 3252(-1358)

LM; med brn, dense, blocky, tite

LANSING 'A' 3262(-1268)

LM; off wh, f to med xln, rarely finely oolitic, fair p-p/small vug por, med yel fluor, gd odor, SFO, some bleeding oil, spotted/even stn, instant cut

22 Unit Incr. Shale

Recycle Shale

10 Unit Incr. SHOW

0.5 TG, CL, S 50 500

95 Unit Incr. SHOW

Vis 52
Wt. 9.1
LCM 0#
conn

WOB 35K
PP 1015#
SPM 60
RPM 75

conn

A.V. = 118.90

conn

Vis 60
Wt. 9.1
LCM 0#

conn

RQP (min/m)
Gamma (A Conn)

WOB 35K
PP 1025#
SPM 60
RPM 75

conn

Vis 60
Wt. 9.1
LCM 0#

conn

DST #1
Lansing A

3100

3150

3200

3250

3266' - 3281'
Corrected
 CFS. at 3281'
 MudCo. Mud
 Check at 3283'
 Vis 49 Wt. 9.2
 WL 8.0 Cl 4800
 PH 10.5 LCM 0#

DST #2
Lans 'B - E'
 3282' - 3338'
Corrected
 Vis 56
 Wt. 9.2
 LCM 0#
 conn

CFS. at 3338'
 MudCo. Mud
 Check at 3340'
 Vis 56 Wt. 9.05
 WL 8.0 Cl 5000
 PH 10.5 LCM 0#

A.V. = 118.60
 conn
 WOB 38K
 PP 1000#
 SPM 60
 RPM 75

Vis 48
 Wt. 9.2

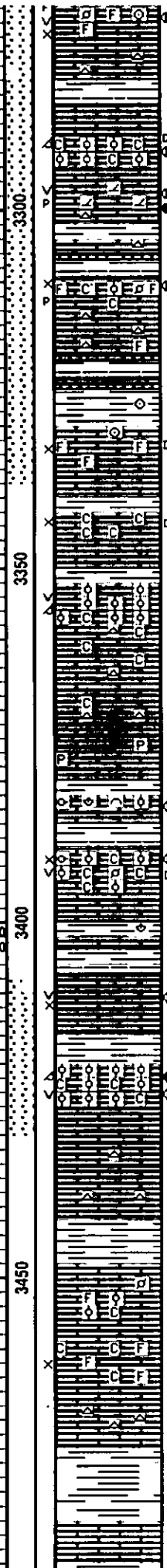
conn
 CFS. at 3398'

Rd (min/f)
 Gamma (AP)

DST #4
KC. 'I' & 'J'
 3409' - 3430'
Corrected
 CFS. at 3430'
 Vis 48
 Wt. 9.2
 LCM 0#

conn
 WOB 38K
 PP 975#
 SPM 60
 RPM 75

R=Rough Drilling



LM; off wh, foss ip, fair interpart w/scat vug por, trc frags w/stn on frac face, med yel fluor, v. gd odor, gd cut, SFO, trc gas bubbles

DST #1: Lansing 'A' 3266' - 3281'
LANSING 'B' 3285(-1391)

LM; tan, off wh, foss - finely pelletal to oolitic, much blk tar/gils, chalky soft ip, med yel fluor, faint odor, very little live shows, no FO

LM; off wh, txln, fair p-p/ vug por, brite yel fluor, fair/gd odor, dolo lp, spotted/even lt brn stn, SFO

LANSING 'C/D' 3309(-1415)

LM; tan to off wh, cse xln/foss ip, fair interxln w/occ p-p por, med brn spotted stn, SSFO, med/brite yel fluor, fair odor, partly chalky mtx, some dk hvy residual oil

SH; med to dk gy, platy, foss ip.

LANSING 'E' 3330(-1436)

LM; tan to lt brn, foss lp, well cem, poor to no vis interpart por, trc dk brn residual oil stn, no odor, trc dull yel fluor, tite

DST #2: Lansing 'B'-'E' 3282' - 3338'

LM; off wh, buff, fxln, v. chalky, soft, poor to fair interxln por, dull/lt yel fluor, scat dk brn residual stn, no odor, poor cut

LANSING 'G' 3352(-1458)

LM; off wh, tan, lt gy, oolitic, med to occ lrg moldic por, rare vug por, no fluor, no stn or odor, barren, rare oolitic cht, occ chalky, ns.

LM; tan to lt gy, lt brn, most dense, blocky, scat tan cht, minor chalky mtx, no fluor, ns.

LM; med to dk gy brn, hd, pyr lp, dense

LM; med/dk brn, foss, hd, scat dk brn stn, tite
LANSING/K.C. 'H' 3389(-1495)

LM; off wh, lt brn, oolitic - highly foss lp, poor/fair interpart por, vug por ip, spotted dk brn stn, med/brite yel fluor, fair cut, no FO, faint odor, chalky lp, some barren por, poor show

SH; lt gy, grn, platy, foss ip.

K.C. 'I' 3407(-1513)

LM; off wh, tan, oolitic, foss, most well cem, poor interpart/scat vug por, v. spotted med brn stn, rare med yel fluor, no FO., faint odor, tite

K.C. 'J' 3420(-1526)

LM; off wh, tan, oolitic, well dev. oomoldic por, occ vug por, much med to dk brn live oil stn, SFO, fair odor, med/brite yel fluor, gd cut, some barren por w/occ chalky mtx

DST #3: KC. 'I' + 'J' 3409' - 3430'

LM; tan to off wh, buff, most dense, blocky, scat gy to off wh cht, no vis por, ns.

K.C. 'K' 3448(-1554)

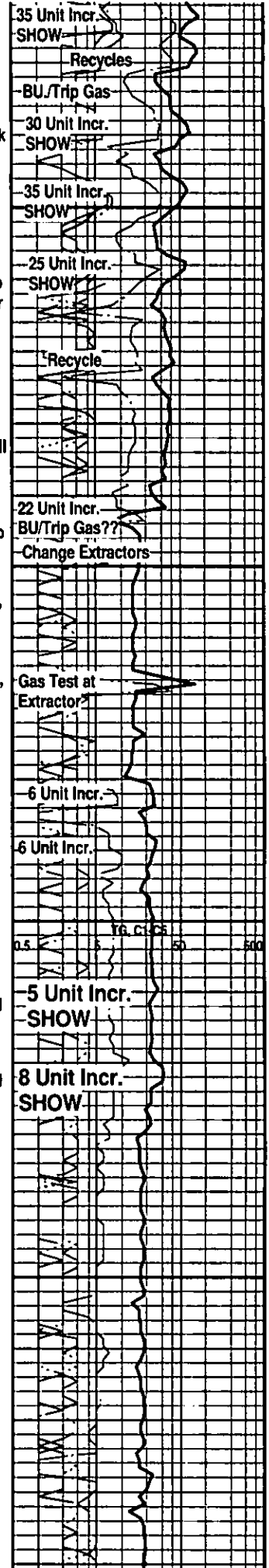
LM; off wh, tan, foss - finely oolitic lp, scat chalky mtx, dull yel fluor, no stn or odor, no gas kick, ns.

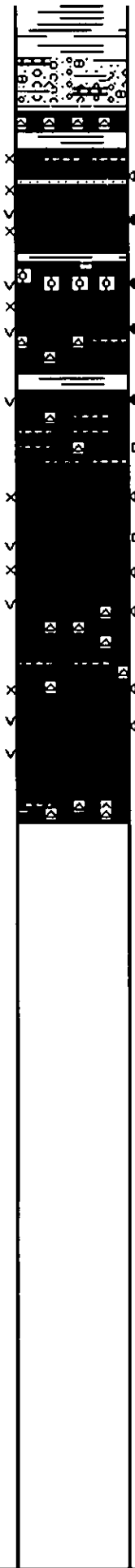
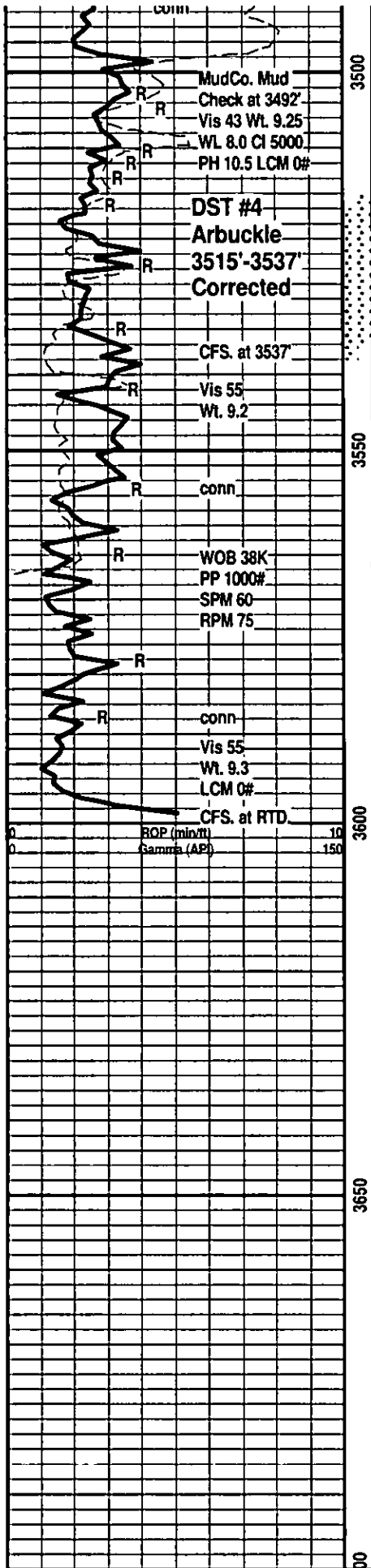
LM; lt gy, off wh, foss, fair interpart por, minor grn clay incl, no fluor, no stn or odor, occ soft chalky mtx, ns.

LM; off wh, lt gy, foss ip, occ fxln, most well cem, scat off wh cht, no vis por, no fluor, ns.

SH; varic: rust red, yel, gy, grn, platy

LM; rose red, red brn, weath appearance, blocky
BASE KANSAS CITY 3490(-1596)





SH; varic: gm, red - rust red, maroon, brn, gy

CONGL; weath varic lmst, some nodular, varic shales, trc cht, some weathered cherty dolo

ARBUCKLE 3510(-1616)
 DOL; off wh, lt brn, sucrosic/fine rhombic, lmy ip, fair interpart por, spotted stn, fair odor, med yel fluor, Trc. FO, trc ss w/oil stn and fluor
 DOL; lt golden brn, sucrosic to med rhombic, spotted/even lt brn stn, SFO, gd odor, most w/gd interdn/vug por, golden fluor, gd cut, gd odor
 DOL; tan - lt brn, hd, lmy, turquoise sh interbdd
 DOL; med brn, oil saturated, oolitic ip, fine to med rhombic, GSFO, gd odor, golden fluor, even stn, gd cut, some pcs. bleeding oil, lmy ip.

DST #4: Arbuckle 3515' - 3537'
 DOL; med brn, med rhombic, some cherty, some well dev. vug por, med yel fluor, scat pcs. w/blk tar/gils, sev. pcs. w/live oil saturation and SFO, gd odor, gd cut, interbdd hd lmy dolo w/blk tarry dead oil, scat wh fresh cht, trc gm to turquoise shale

DOL; tan to med brn, sucrosic to med xln, gd interdn w/occc vug por, mostly blk tar/dead oil, med yel fluor, fair odor, decreasing odor

DOL; off wh, lt/med brn, gd vug por, spotted live stn w/SSFO, cherty w/wh fresh cht, med yel fluor, fair/gd odor, interbdd hd lmy dol

DOL; off wh, lt brn, sucrosic to med/rarely cse rhombic, scat well dev. interdn and vug por, some oil saturation, v. gd odor, med yel fluor

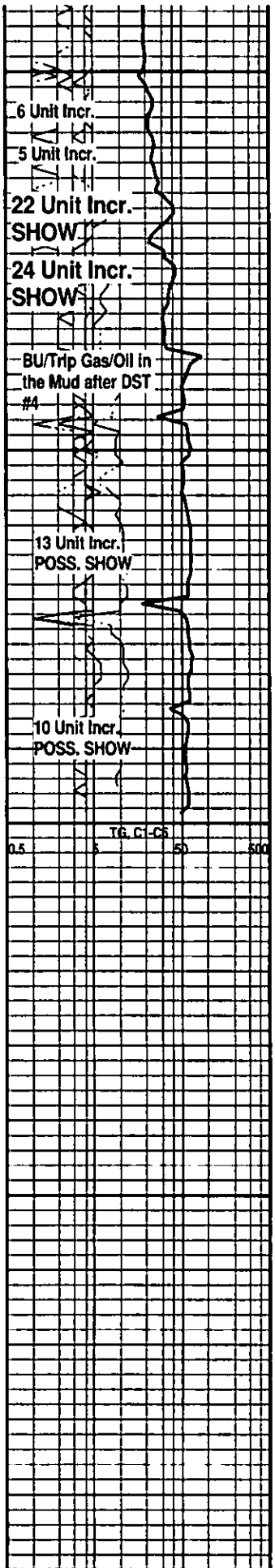
DOL; off wh, v. cherty, lmy, hd, blocky

RTD. 3600' at 4:10 AM. 2/18/12

LTD. 3600'

Superior Well Services DIL, NEU/DEN w/PE, Microlog

NOTE: This log was shifted upward by 1' - 2' for correlation purposes with the Superior Well Service LOGS.





TRILOBITE TESTING INC.

P.O. Box 1733 • Hays, Kansas 67601

Test Ticket

NO. 45752

Well Name & No. Panning 1-19 Test No. 1 Date 02/15/12
 Company Herman L. Loeb, LLC Elevation ~~1894~~ 1894 KB ~~1885~~ 1885 GL
 Address PO Box 838 Lawrenceville, IL 62439
 Co. Rep / Geo. Jon Christensen Rig Sterling 4
 Location: Sec. 19 Twp. 20S Rge. 13W Co. Barton State KS

Interval Tested 3268 - 3283 Zone Tested Lansing "A"
 Anchor Length 15 Drill Pipe Run 3095 Mud Wt. 9.2
 Top Packer Depth 3263 Drill Collars Run 182 Vis 49
 Bottom Packer Depth 3268 Wt. Pipe Run 0 WL 80
 Total Depth 3283 Chlorides 4800 ppm System LCM

Blow Description IF weak blow, 1/2 inch
ISI: NO Blow Back
FF: weak blow, 3/4 inch
FSI: NO Blow Back

Rec	Feet of	%gas	%oil	%water	%mud
<u>3</u>	<u>150 cm</u>		<u>1</u>		<u>99</u>
Rec	Feet of	%gas	%oil	%water	%mud
Rec	Feet of	%gas	%oil	%water	%mud
Rec	Feet of	%gas	%oil	%water	%mud
Rec	Feet of	%gas	%oil	%water	%mud

Rec Total 3 BHT 103° Gravity N/C API RW N/C @ N/C F Chlorides N/C ppm

(A) Initial Hydrostatic <u>1663</u>	<input checked="" type="checkbox"/> Test	T-On Location <u>09:15</u>
(B) First Initial Flow <u>12</u>	<input type="checkbox"/> Jars	T-Started <u>10:19</u>
(C) First Final Flow <u>19</u>	<input checked="" type="checkbox"/> Safety Joint	T-Open <u>12:24</u>
(D) Initial Shut-In <u>68</u>	<input type="checkbox"/> Circ Sub	T-Pulled <u>15:05</u>
(E) Second Initial Flow <u>13</u>	<input type="checkbox"/> Hourly Standby	T-Out <u>16:31</u>
(F) Second Final Flow <u>19</u>	<input checked="" type="checkbox"/> Mileage <u>90</u>	Comments
(G) Final Shut-In <u>44</u>	<input type="checkbox"/> Sampler	
(H) Final Hydrostatic <u>1510</u>	<input type="checkbox"/> Straddle	<input type="checkbox"/> Ruined Shale Packer
Initial Open <u>15</u>	<input type="checkbox"/> Shale Packer	<input type="checkbox"/> Ruined Packer
Initial Shut-In <u>45</u>	<input type="checkbox"/> Extra Packer	<input type="checkbox"/> Extra Copies
Final Flow <u>30</u>	<input type="checkbox"/> Extra Recorder	Sub Total
Final Shut-In <u>60</u>	<input type="checkbox"/> Day Standby	Total
	<input type="checkbox"/> Accessibility	MP/DST Disc't
	Sub Total	

Approved By [Signature] Our Representative [Signature]

Triobite Testing, Inc. shall not be liable for damaged of any kind of the property or personnel of the one for whom a test is made, or for any loss suffered or sustained, directly or indirectly, through the use of its equipment, or its statements or opinion concerning the results of any test, tools lost or damaged in the hole shall be paid for at cost by the party for whom the test is made.



**TRILOBITE
TESTING, INC.**

DRILL STEM TEST REPORT

Herman L. Loeb, LLC
 PO Box 838
 Lawrenceville, IL 62439
 ATTN: Jon Christensen

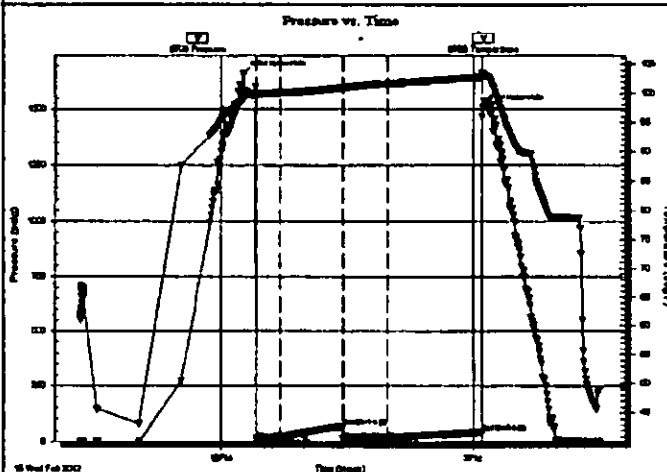
19-20S-13W Barton
Panning 1-19
 Job Ticket: 45752 DST#: 1
 Test Start: 2012.02.15 @ 10:19:28

GENERAL INFORMATION:

Formation: **Lansing "A"**
 Deviated: **No Whipstock** ft (KB)
 Test Type: **Conventional Bottom Hole (Initial)**
 Time Tool Opened: **12:24:43**
 Tester: **Leal Cason**
 Time Test Ended: **16:31:13**
 Unit No: **45**
 Interval: **3268.00 ft (KB) To 3283.00 ft (KB) (TVD)**
 Reference Elevations: **1894.00 ft (KB)**
 Total Depth: **3283.00 ft (KB) (TVD)**
1885.00 ft (CF)
 Hole Diameter: **7.88 inches** Hole Condition: **Good**
 KB to GR/CF: **9.00 ft**

Serial #: **6798** Inside
 Press@RunDepth: **18.68 psig @ 3269.00 ft (KB)** Capacity: **8000.00 psig**
 Start Date: **2012.02.15** End Date: **2012.02.15** Last Calib.: **2012.02.15**
 Start Time: **10:19:28** End Time: **16:31:13** Time On Btm: **2012.02.15 @ 12:15:43**
 Time Off Btm: **2012.02.15 @ 15:06:28**

TEST COMMENT: **IF: Weak Blow, 1/2 inch**
IS: No Blow Back
FP: Weak Blow, 3/4 inch
FST: No Blow Back



PRESSURE SUMMARY

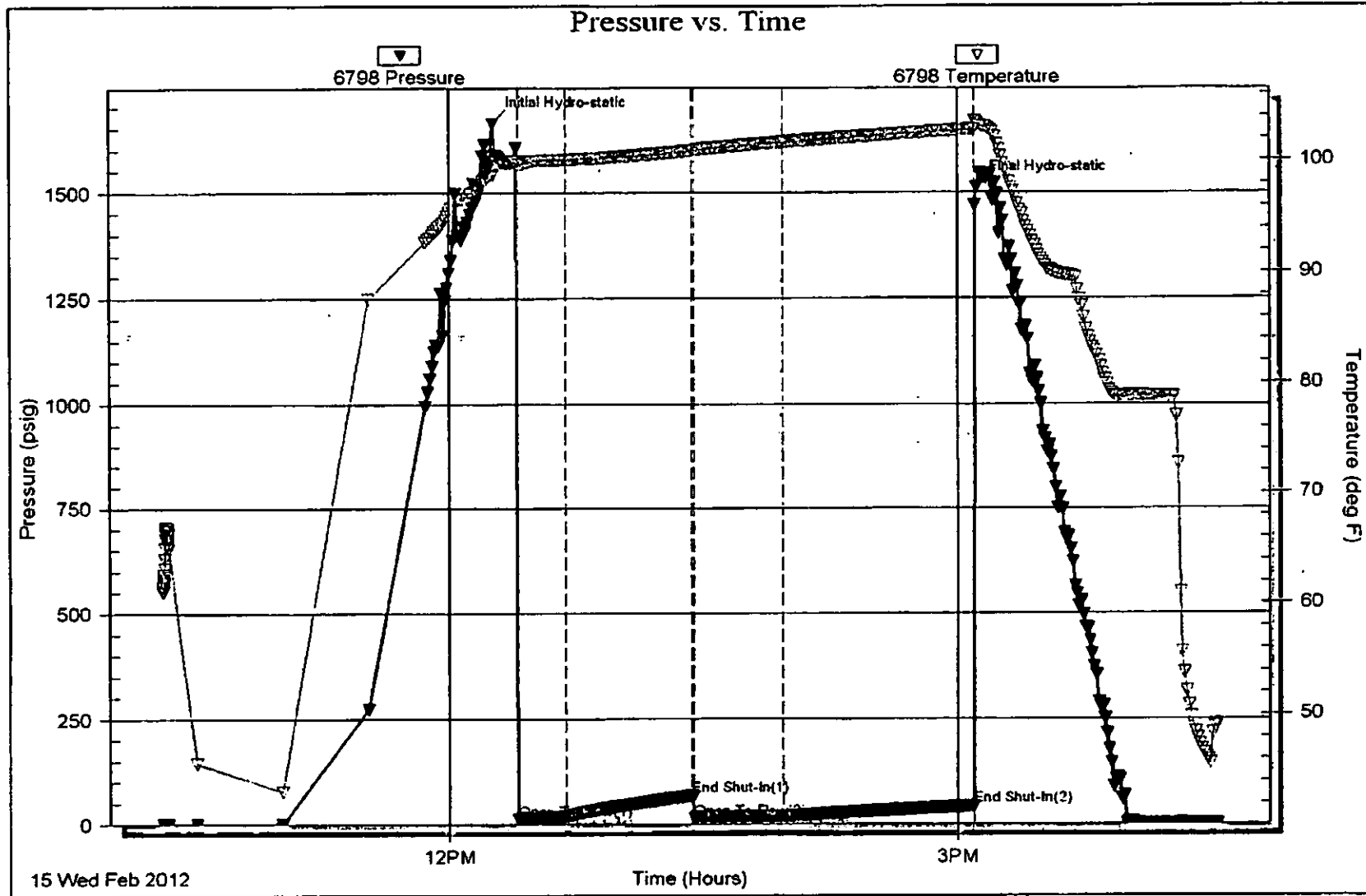
Time (Min.)	Pressure (psig)	Temp (deg F)	Annotation
0	1663.67	98.70	Initial Hydro-static
9	12.34	99.60	Open To Flow (1)
26	18.65	100.09	Shut-In(1)
71	68.15	100.87	End Shut-In(1)
71	13.36	100.94	Open To Flow (2)
103	18.68	101.62	Shut-In(2)
170	43.81	102.77	End Shut-In(2)
171	1510.67	103.34	Final Hydro-static

Recovery

Length (ft)	Description	Volume (bbl)
3.00	VSOOM 1%O 99%M	0.01

Gas Rates

Choke (inches)	Pressure (psig)	Gas Rate (McF/d)





TRILOBITE TESTING INC.

P.O. Box 1733 • Hays, Kansas 67601

Test Ticket

NO. 45753

Well Name & No. Panning 1-19 Test No. 2 Date 02/16/12
 Company Herman L Loeb LLC Elevation 1894 KB 1825 GL
 Address PO Box 838 Lawrenceville, IL 62439
 Co. Rep/Geo. Jon Christensen Rig STERLING 4
 Location: Sec. 19 Twp. 20S Rge. 13 W Co. Barton State KS

Interval Tested 3284 - 3340 Zone Tested Lansing "B, C, D, & E"
 Anchor Length 56 Drill Pipe Run 3094 Mud Wt. 9.2
 Top Packer Depth 3279 Drill Collars Run 182 Vis 58
 Bottom Packer Depth 3284 Wt. Pipe Run 0 WL 8.0
 Total Depth 3340 Chlorides 4800 ppm System LCM

Blow Description IF: Fair Blow, 4 inches
IST: NO Blow Back
FF: Fair Blow, BOB in 31 minutes
FST: NO Blow Back

Rec	Feet of	%gas	%oil	%water	%mud
<u>620</u>	<u>CIP</u>				
<u>61</u>	<u>GWCM</u>	<u>2</u>		<u>10</u>	<u>88</u> <u>90</u>
Rec	Feet of	%gas	%oil	%water	%mud
Rec	Feet of	%gas	%oil	%water	%mud
Rec	Feet of	%gas	%oil	%water	%mud

Rec Total 61 BHT 102 Gravity N/C API RW .2 @ 31 °F Chlorides 87000 ppm

(A) Initial Hydrostatic <u>1672</u>	<input checked="" type="checkbox"/> Test	T-On Location <u>01:15</u>
(B) First Initial Flow <u>20</u>	<input type="checkbox"/> Jars	T-Started <u>02:13</u>
(C) First Final Flow <u>28</u>	<input checked="" type="checkbox"/> Safety Joint	T-Open <u>05:04</u>
(D) Initial Shut-In <u>673</u>	<input type="checkbox"/> Circ Sub	T-Pulled <u>08:31</u>
(E) Second Initial Flow <u>29</u>	<input type="checkbox"/> Hourly Standby	T-Out <u>09:59</u>
(F) Second Final Flow <u>49</u>	<input checked="" type="checkbox"/> Mileage <u>(90)</u>	Comments _____
(G) Final Shut-In <u>629</u>	<input type="checkbox"/> Sampler	_____
(H) Final Hydrostatic <u>1713</u>	<input type="checkbox"/> Straddle	<input type="checkbox"/> Ruined Shale Packer
Initial Open <u>15</u>	<input type="checkbox"/> Shale Packer	<input type="checkbox"/> Ruined Packer
Initial Shut-In <u>45</u>	<input type="checkbox"/> Extra Packer	<input type="checkbox"/> Extra Copies
Final Flow <u>45</u>	<input type="checkbox"/> Extra Recorder	Sub Total _____
Final Shut-In <u>90</u>	<input type="checkbox"/> Day Standby	Total _____
	<input type="checkbox"/> Accessibility	MP/DST Disc't _____
	Sub Total _____	

Approved By [Signature] Our Representative [Signature]

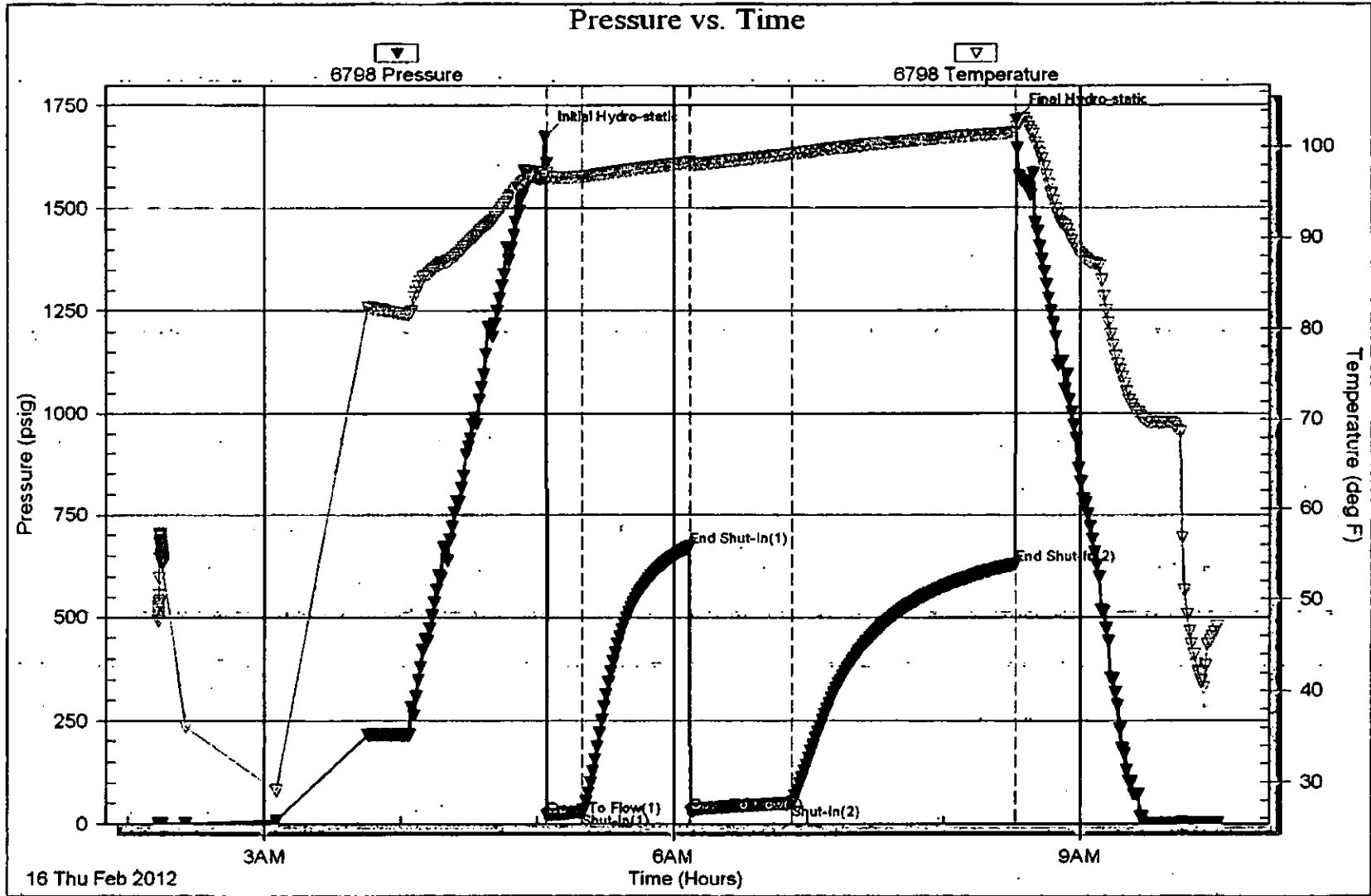
TriLOBite Testing Inc. shall not be liable for damaged of any kind of the property or personnel of the one for whom a test is made, or for any loss suffered or sustained, directly or indirectly, through the use of its equipment, or its statements or opinion concerning the results of any test, tools lost or damaged in the hole shall be paid for at cost by the party for whom the test is made.

Serial #: 6798

Inside Herman L Loeb, LLC

Panning 1-19

DST Test Number: 2





TRILOBITE TESTING INC.

P.O. Box 1733 - Hays, Kansas 67601

Test Ticket

NO. 45754

Well Name & No. Hanning 1+L9 Test No. 3 Date 02/16/12
 Company Herman L. Loebl LLC Elevation 1894 KB 1885 GL
 Address PO BOX 838 Lawrenceville IL 62439
 Co. Rep/Geo. Jon Christensen Rig STERLING 4
 Location: Sec. 19 Twp. 20S Rge. 13W Co. Barton State KS

Interval Tested 3411' - 3432 Zone Tested KC "I+J"
 Anchor Length 21 Drill Pipe Run 3222 Mud Wt. 9.2
 Top Packer Depth 3406 Drill Collars Run 182 Vis 55
 Bottom Packer Depth 3411 Wt. Pipe Run 0 WL 8.0
 Total Depth 3432 Chlorides 5000 ppm System LCM

Blow Description IF: WEAK SURFACE BLOW
ISF: NO BLOW BACK
FF: WEAK SURFACE BLOW
FSI: NO BLOW BACK

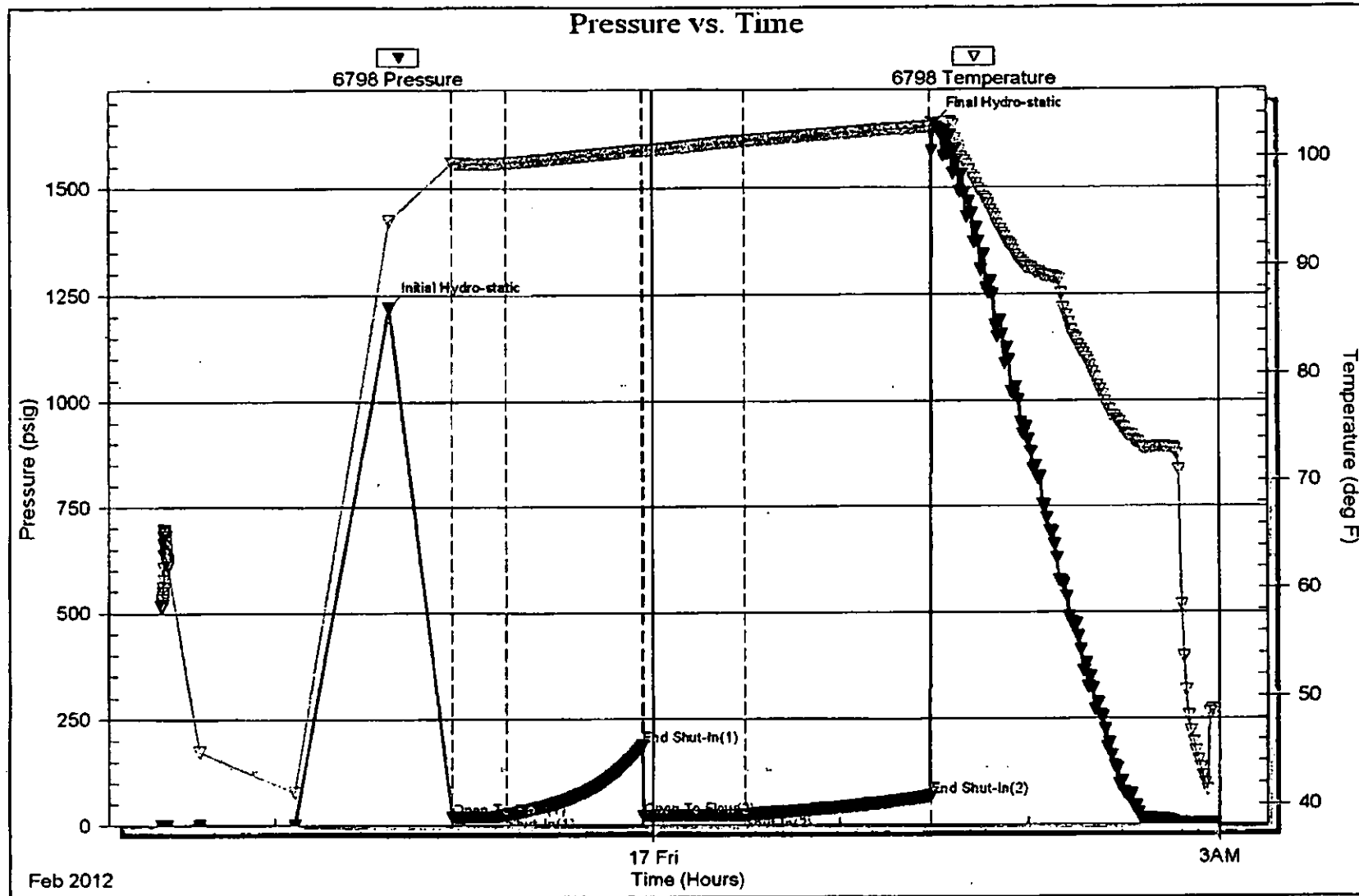
Rec	Feet of	%gas	%oil	%water	%mud
<u>2</u>	<u>Drig Mud</u>				
Rec	Feet of	%gas	%oil	%water	%mud
Rec	Feet of	%gas	%oil	%water	%mud
Rec	Feet of	%gas	%oil	%water	%mud
Rec	Feet of	%gas	%oil	%water	%mud

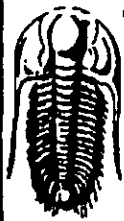
Rec Total 2 BHT 103° Gravity N/C API RW N/C @ N/C F Chlorides N/C ppm

(A) Initial Hydrostatic <u>1220</u>	<input checked="" type="checkbox"/> Test	T-On Location <u>20:45</u>
(B) First Initial Flow <u>18</u>	<input type="checkbox"/> Jars	T-Started <u>21:24</u>
(C) First Final Flow <u>24</u>	<input checked="" type="checkbox"/> Safety Joint	T-Open <u>22:56</u>
(D) Initial Shut-In <u>188</u>	<input type="checkbox"/> Circ Sub	T-Pulled <u>01:28</u>
(E) Second Initial Flow <u>21</u>	<input type="checkbox"/> Hourly Standby	T-Out <u>02:59</u>
(F) Second Final Flow <u>23</u>	<input checked="" type="checkbox"/> Mileage <u>(90)</u>	Comments
(G) Final Shut-In <u>67</u>	<input type="checkbox"/> Sampler	
(H) Final Hydrostatic <u>1649</u>	<input type="checkbox"/> Straddle	<input type="checkbox"/> Ruined Shale Packer
Initial Open <u>15</u>	<input type="checkbox"/> Shale Packer	<input type="checkbox"/> Ruined Packer
Initial Shut-In <u>45</u>	<input type="checkbox"/> Extra Packer	<input type="checkbox"/> Extra Copies
Final Flow <u>30</u>	<input type="checkbox"/> Extra Recorder	Sub Total
Final Shut-In <u>60</u>	<input type="checkbox"/> Day Standby	Total
	<input type="checkbox"/> Accessibility	MP/DST Disc't
	Sub Total	

Approved By [Signature] Our Representative [Signature]

Trilobite Testing Inc. shall not be liable for damaged of any kind of the property or personnel of the one for whom a test is made, or for any loss suffered or sustained, directly or indirectly, through the use of its equipment, or its statements or opinion concerning the results of any test, tools lost or damaged in the hole shall be paid for at cost by the party for whom the test is made.





**TRIOBITE
TESTING, INC**

DRILL STEM TEST REPORT

Herman L. Loeb, LLC
 PO Box 838
 Lawrenceville, FL 62439
 ATTN: Jon Christensen

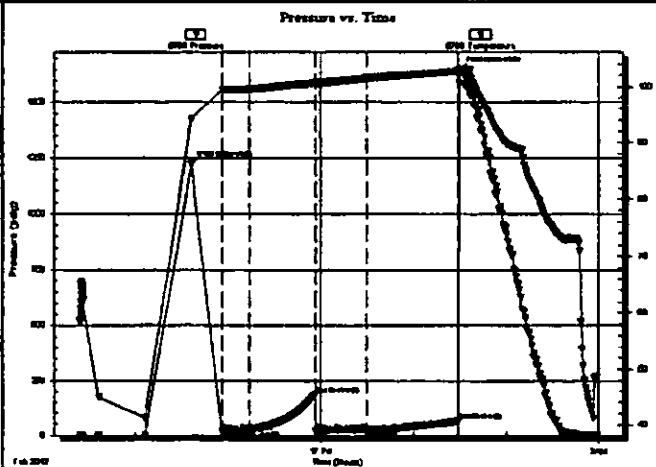
19-20S-13W Barton
 Panning 1-19
 Job Ticket: 45754 DST#: 3
 Test Start: 2012.02.16 @ 21:24:08

GENERAL INFORMATION:

Formation: **KC "I & J"**
 Deviated: **No Whipstock** ft (KB)
 Time Tool Opened: **22:56:08**
 Time Test Ended: **02:59:08**
 Interval: **3411.00 ft (KB) To 3432.00 ft (KB) (TVD)**
 Total Depth: **3432.00 ft (KB) (TVD)**
 Hole Diameter: **7.88 inches** Hole Condition: **Good**
 Test Type: **Conventional Bottom Hole (Reset)**
 Tester: **Leal Cason**
 Unit No: **45**
 Reference Elevations: **1894.00 ft (KB)**
1885.00 ft (CF)
 KB to GRVCF: **9.00 ft**

Serial #: **6798** Inside
 Press@RunDepth: **23.32 psig @ 3412.00 ft (KB)** Capacity: **8000.00 psig**
 Start Date: **2012.02.16** End Date: **2012.02.17** Last Calib.: **2012.02.17**
 Start Time: **21:24:08** End Time: **02:59:08** Time On Btm: **2012.02.16 @ 22:36:08**
 Time Off Btm: **2012.02.17 @ 01:30:08**

TEST COMMENT: IF: Weak Surface Blow
 IS: No Blow Back
 FF: Weak Surface Blow
 FS: No Blow Back



PRESSURE SUMMARY

Time (Min.)	Pressure (psig)	Temp (deg F)	Annotation
0	1220.62	94.15	Initial Hydro-static
20	18.22	99.48	Open To Flow (1)
38	24.20	99.49	Shut-In(1)
81	188.03	100.64	End Shut-In(1)
81	20.77	100.58	Open To Flow (2)
114	23.32	101.47	Shut-In(2)
173	67.34	102.76	End Shut-In(2)
174	1649.41	103.14	Final Hydro-static

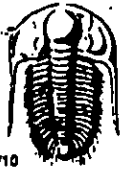
Recovery

Length (ft)	Description	Volume (bbl)
2.00	DRLG Mud	0.01

* Recovery from multiple tests

Gas Rates

	Choke (Inches)	Pressure (psig)	Gas Rate (Mcfd)



TRILOBITE TESTING INC.

P.O. Box 1733 • Hays, Kansas 67601

Test Ticket

NO. 45755

Well Name & No. Panning 1-19 Test No. 4 Date 02/17/12
 Company Herman L Loeb LLC Elevation 1894 KB 1885 GL
 Address PO BOX 838 Lowermerceville, IL 62439
 Co. Rep / Geo. Jon Christensen Rig Sterling 4
 Location: Sec. 19 Twp. 20 S Rge. 13 W Co. Barton State KS

Interval Tested 3516 - 3538 Zone Tested Arbuckle
 Anchor Length 22 Drill Pipe Run 3319 Mud Wt. 9.2
 Top Packer Depth 3511 Drill Collars Run 187 Vis 61
 Bottom Packer Depth 3518 Wt. Pipe Run 0 WL 8.8
 Total Depth 3538 Chlorides 5000 ppm System LCM

Blow Description IF: Fair Blow, 3 1/2 inches
IS: NO Blow Back
FF: NO Blow, Flushed TOOL, Fair Blow, Built to 10 inches
FSI: NO Blow Back

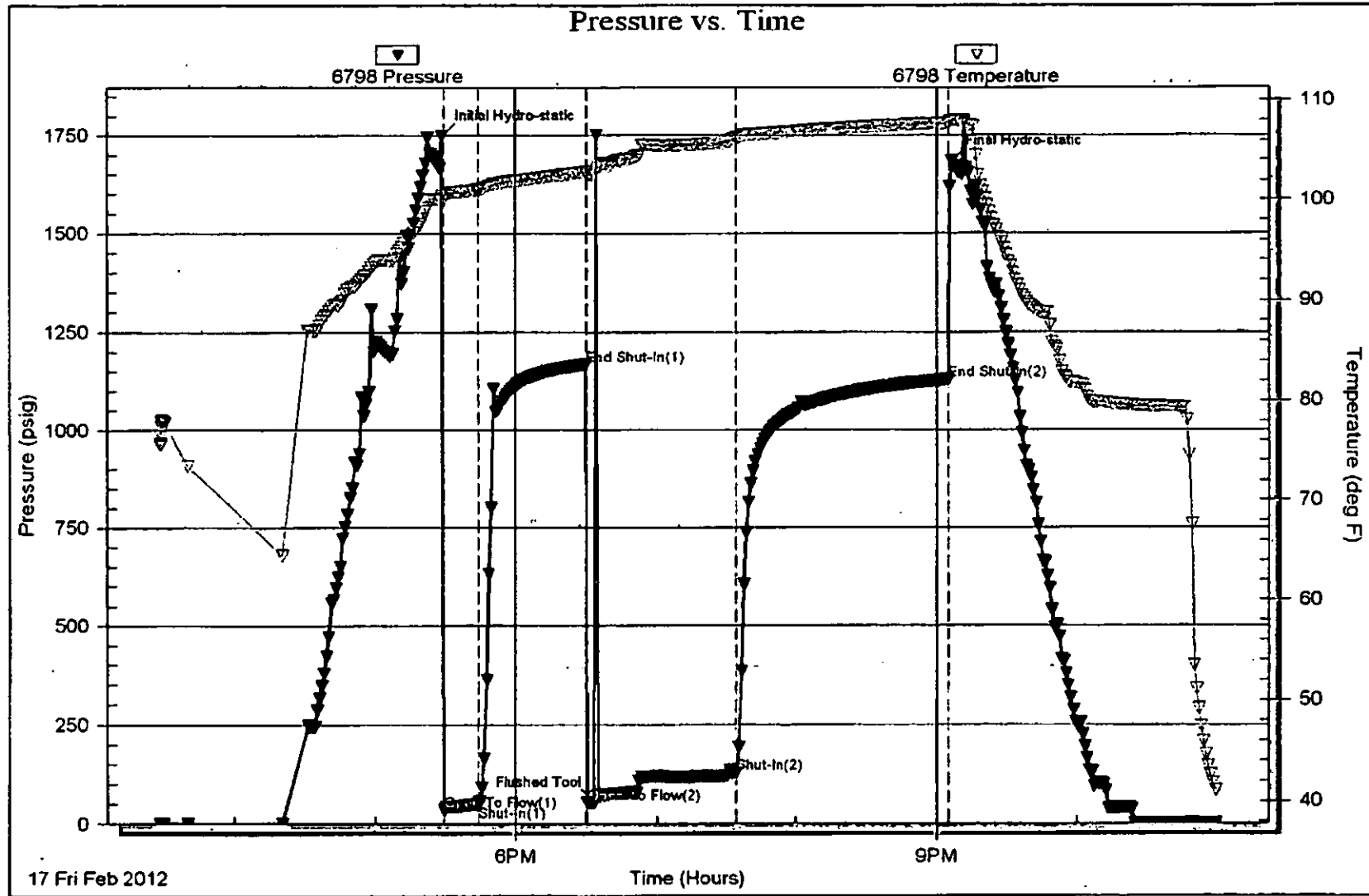
Rec	Feet of	%gas	%oil	%water	%mud
<u>50</u>	<u>OCM</u>	<u>15</u>		<u>85</u>	
<u>120</u>	<u>OCM</u>	<u>12</u>		<u>88</u>	
<u>60</u>	<u>GOCM</u>	<u>5</u>	<u>10</u>	<u>85</u>	

Rec Total 230 BHT 107° Gravity N/C API RW N/C @ N/C F Chlorides N/C ppm

(A) Initial Hydrostatic <u>1747</u>	<input checked="" type="checkbox"/> Test	T-On Location <u>14:45</u>
(B) First Initial Flow <u>33</u>	<input type="checkbox"/> Jars	T-Started <u>15:28</u>
(C) First Final Flow <u>49</u>	<input checked="" type="checkbox"/> Safety Joint	T-Open <u>17:28</u>
(D) Initial Shut-In <u>1166</u>	<input type="checkbox"/> Circ Sub	T-Pulled <u>21:04</u>
(E) Second Initial Flow <u>52</u>	<input type="checkbox"/> Hourly Standby	T-Out <u>22:58</u>
(F) Second Final Flow <u>128</u>	<input checked="" type="checkbox"/> Mileage <u>(90)</u>	Comments
(G) Final Shut-In <u>1127</u>	<input type="checkbox"/> Sampler	
(H) Final Hydrostatic <u>1683</u>	<input type="checkbox"/> Straddle	<input type="checkbox"/> Ruined Shale Packer
Initial Open <u>15</u>	<input type="checkbox"/> Shale Packer	<input type="checkbox"/> Ruined Packer
Initial Shut-In <u>45</u>	<input type="checkbox"/> Extra Packer	<input type="checkbox"/> Extra Copies
Final Flow <u>60</u>	<input type="checkbox"/> Extra Recorder	Sub Total
Final Shut-In <u>90</u>	<input type="checkbox"/> Day Standby	Total
	<input type="checkbox"/> Accessibility	MP/DST Disc't
	Sub Total	

Approved By [Signature] Our Representative [Signature]

TriLOBITE TESTING INC. shall not be liable for damaged of any kind of the property or personnel of the one for whom a test is made, or for any loss suffered or sustained, directly or indirectly, through the use of its equipment, or its statements or opinion concerning the results of any test, tools lost or damaged in the hole shall be paid for at cost by the party for whom the test is made.





788 Panning
LH20

PAGE 1 of 1	CUST NO 1007589	INVOICE DATE 02/15/2012
INVOICE NUMBER 1718 - 90830691		

Pratt (620) 672-1201
 B HERMAN L LOEB LLC
 I PO Box: 838
 L LAWRENCEVILLE
 L IL US 62439
 T
 O ATTN: ACCOUNTS PAYABLE

J LEASE NAME Panning 1-19
 O LOCATION
 B COUNTY Barton
 S STATE KS
 I JOB DESCRIPTION Cement-New Well Casing/Pi
 T JOB CONTACT
 E

JOB #	EQUIPMENT #	PURCHASE ORDER NO.	TERMS	DUE DATE	
40430197	19905		Net - 30 days	03/16/2012	
		QTY	U of M	UNIT PRICE	INVOICE AMOUNT
<i>For Service Dates: 02/11/2012 to 02/11/2012</i>					
0040430197					
171805233A Cement-New Well Casing/Pi 02/11/2012					
Cement 8 5/8" Surface					
A-CON Common Cement					
Common Cement					
Celloflake					
Calcium Chloride					
Sugar					
Top Rubber Cement Plug 8 5/8"					
8 5/8" Guide Shoe(Red)					
Baffle Plate Aluminum 8 5/8"(Blue)					
Heavy Equipment Mileage					
Proppant and Bulk Delivery Charge					
Blending & Mixing Service Charge					
Unit Mileage Charge-Pickups, Vans & Cars					
Plug Container Utilization Charge					
Depth Charge: 501-1000'					
Service Supervisor					
PLEASE REMIT TO:		SEND OTHER CORRESPONDENCE TO:		SUB TOTAL	11,042.80
BASIC ENERGY SERVICES, LP		BASIC ENERGY SERVICES, LP		TAX	482.21
PO BOX 841903		PO BOX 10460		INVOICE TOTAL	11,525.01
DALLAS, TX 75284-1903		MIDLAND, TX 79702			



BASIC
ENERGY SERVICES
PRESSURE PUMPING & WIRELINE

10244 NE Hwy. 61
P.O. Box 8613
Pratt, Kansas 67124
Phone 620-672-1201

FIELD SERVICE TICKET
1718 05233 A

DATE _____ TICKET NO. _____

DATE OF JOB <u>2-11-12</u> DISTRICT <u>Kansas</u>		NEW WELL <input checked="" type="checkbox"/> OLD WELL <input type="checkbox"/> PROD <input type="checkbox"/> INJ <input type="checkbox"/> WDW <input type="checkbox"/> CUSTOMER ORDER NO.:							
CUSTOMER <u>Herman L. Lueb LLC</u>		LEASE <u>Panning # 1-19</u> WELL NO.:							
ADDRESS		COUNTY <u>Badon</u> 19-20-13 STATE <u>Kansas</u>							
CITY STATE		SERVICE CREW <u>Allen, Mike, Mikel.</u>							
AUTHORIZED BY		JOB TYPE: <u>8 5/8" Surface</u> <u>CNW</u>							
EQUIPMENT#	HRS	EQUIPMENT#	HRS	EQUIPMENT#	HRS	TRUCK CALLED	<u>2-11-12</u> DATE	AM	TIME
<u>H 28433</u>	<u>1 1/2</u>								<u>400</u>
<u>19903-19905</u>	<u>1 1/2</u>								<u>515</u>
<u>19960-19918</u>	<u>1 1/2</u>								<u>500</u>
									<u>1100</u>
									<u>1150</u>
									<u>50-miles</u>

CONTRACT CONDITIONS: (This contract must be signed before the job is commenced or merchandise is delivered).
The undersigned is authorized to execute this contract as an agent of the customer. As such, the undersigned agrees and acknowledges that this contract for services, materials, products, and/or supplies includes all of and only those terms and conditions appearing on the front and back of this document. No additional or substitute terms and/or conditions shall become a part of this contract without the written consent of an officer of Basic Energy Services LP.

SIGNED: _____
(WELL OWNER, OPERATOR, CONTRACTOR OR AGENT)

ITEM/PRICE REF. NO.	MATERIAL, EQUIPMENT AND SERVICES USED	UNIT	QUANTITY	UNIT PRICE	\$ AMOUNT
CP100	Common	SK	200		\$ 3200.00
CP101	A-Conn Bleed Common	SK	200		\$ 3600.00
SC102	cell Flake	lb	100		\$ 370.00
CC109	Calcium Chloride	lb	940		\$ 987.00
CF105	Top Rubber cmt Plug 8 5/8"	EA	1		\$ 225.00
CF203	8 5/8" Guide Shoe Red	EA	1	550	\$ 550.00
CF753	Baffle Plate Aluminum 8 5/8 Blue	EA	1		\$ 170.00
CC131	SUGAR	lb	50		\$ 100.00
EA00	Unit mileage charge Pickup	mi	510		\$ 212.50
EA01	Heavy Equip. mileage	mi	100		\$ 700.00
EA13	Bulk Battery Charge	TM	940		\$ 1504.00
CE201	Depth Charge 501-1000'	4-lb	1		\$ 1200.00
CE240	Blending & mixing Service Chg.	SK	400		\$ 260.00
CE504	Plug Container Utilization Chg	Job	1		\$ 250.00
SA03	Service Separator East Shes on Loc	EA	1		\$ 175.00

SUB TOTAL \$ 11,042.80

DLS

CHEMICAL / ACID DATA:			

SERVICE & EQUIPMENT	%TAX ON \$
MATERIALS	%TAX ON \$
TOTAL	

SERVICE REPRESENTATIVE Allen F. Worth THE ABOVE MATERIAL AND SERVICE ORDERED BY CUSTOMER AND RECEIVED BY: [Signature]
(WELL OWNER OPERATOR CONTRACTOR OR AGENT)

FIELD SERVICE ORDER NO. _____

BASIC

energy services, L.P.

TREATMENT REPORT

Customer Herman L. Leach LLC	Lease No. 1	Date 2-11-12
Lease PANNING	Well # 1-19	
Field Order # #05233A	Station Pratt KS	Casing 8 5/8"
Type Job 8 5/8" Surface	Depth 792'	County Barton
	Formation T0 795'	State KS
		Legal Description 19-20-13

PIPE DATA		PERFORATING DATA		FLUID USED		TREATMENT RESUME		
Casing Size	Tubing Size	Shots/Ft		Acid	RATE	PRESS	ISIP	
8 5/8"								
Depth 792'	Depth	From	To	200 - 200 SKS A-COR Blend	Max	12.6"	5 Min.	12.6" / gal
Volume 49.60	Volume	From	To	200 SKS COM 2% CL 1/4 CFE	Min		10 Min.	
Max Press 500	Max Press	From	To	Frac	Avg		15 Min.	
Well Connection P2	Annulus Vol.	From	To		HHP Used		Annulus Pressure	
Plug Depth 780	Packer Depth	From	To	Flush DISP H30	Gas Volume		Total Load	

Customer Representative LANNY "TP"	Station Manager SCOTTY	Treater ALLEN
---------------------------------------	---------------------------	------------------

Service Units	28443	19903	19905	19960	19918				
Driver Names	Allen	mike	matt	mike	Lawrence				

Time	Casing Pressure	Tubing Pressure	Bbls. Pumped	Rate	Service Log
5:15 PM					ON LOC. Discuss Safety, Setup flow job. Finished making 'Short' Trip.
					circ @ 795'
6:30					start out of Hole w/ Bit
7:00					out of Hole, Rig up to Run 8 5/8" csg.
7:45					Start 8 5/8" csg. 24" shoe jt. 12.22' w/ Guide Shoe + Baffle
					IN COLLAR - weld collars + strap
9:00					Casing @ 792' circ w/ Rig.
9:30	2.00"		7 5/2	5	mix 200 SKS A-COR @ 12.6"
10:00				4	mix 200 SKS Common 2% CL 1/4 CFE 15.6"
			4 2 3/4		Finish mix Release TOP
10:10					Rubber Plug 8 5/8"
				5	Start Disp.
10:30	500"		49 1/2	2	Plug down - shut IN @ well. Release PSI - OK.
					wash up + Rackup Equip
11:30					Job complete.
					thanks - Allen, Mike, Mikel.
					CMT TO CELLAR - Large cellar

10244 NE Hiway 61 • P.O. Box 8613 • Pratt, KS 67124-8613 • (620) 672-1201 • Fax (620) 672-5383

Taylor Panning, Inc. 620-672-3656



BASIC
ENERGY SERVICES

*To: Panning
6420*

PAGE 1 of 1	CUST NO 1007589	INVOICE DATE 02/22/2012
INVOICE NUMBER 1718 - 90836356		

Pratt (620) 672-1201
 B HERMAN L LOEB LLC
 I PO Box: 838
 L LAWRENCEVILLE
 T IL US 62439
 O ATTN: ACCOUNTS PAYABLE

J LEASE NAME Panning 1-19
 O LOCATION
 B COUNTY Barton
 S STATE KS
 I JOB DESCRIPTION Cement-New Well Casing/Pi
 T JOB CONTACT

JOB #	EQUIPMENT #	PURCHASE ORDER NO.		TERMS	DUE DATE
40432546	20920			Net - 30 days	03/23/2012
		QTY	U of M	UNIT PRICE	INVOICE AMOUNT
<i>For Service Dates: 02/19/2012 to 02/19/2012</i>					
0040432546					
171805810A Cement-New Well Casing/Pi 02/19/2012					
Cement 5 1/2" Longstring					
50/50 POZ		85.00	EA	8.80	747.96 T
60/40 POZ		50.00	EA	9.60	479.97 T
Celloflake		22.00	EA	2.96	65.12 T
KCL Potassium Chloride		195.00	EA	1.20	233.99 T
Gypsum		360.00	EA	0.60	215.99 T
Gilsonite		510.00	EA	0.54	273.34 T
FLA-322		36.00	EA	6.00	215.99 T
Mud Flush		1,000.00	EA	0.69	687.96 T
Claymax KCL Substitute		4.00	EA	28.00	111.99 T
5 1/2" Port Collar		1.00	EA	2,799.86	2,799.86
Latch Down Plug & Baffle 5 1/2" (Blue)		1.00	EA	319.98	319.98
Auto Fill Float Shoe 5 1/2" (Blue)		1.00	EA	287.98	287.98
Turbolizer 5 1/2" (Blue)		10.00	EA	88.00	879.95
5 1/2" Basket (Blue)		2.00	EA	231.99	463.97
Cement Scratchers Cable Type 5 1/2"		6.00	EA	60.00	359.98
Heavy Equipment Mileage		100.00	MI	5.60	559.97
Unit Mileage Charge-Pickups, Vans & Cars		50.00	HR	3.40	169.99
Proppant and Bulk Delivery Charge		288.00	MI	1.28	368.82
Blending & Mixing Service Charge		135.00	MI	1.12	151.19
Depth Charge; 3001-4000"		1.00	HR	1,727.90	1,727.90
Plug Container Utilization Charge		1.00	EA	199.99	199.99
Service Supervisor		1.00	HR	139.99	139.99
PLEASE REMIT TO:		SEND OTHER CORRESPONDENCE TO:		SUB TOTAL	11,461.68
BASIC ENERGY SERVICES, LP		BASIC ENERGY SERVICES, LP		TAX	221.36
PO BOX 841903		PO BOX 10460		INVOICE TOTAL	11,683.04
DALLAS, TX 75284-1903		MIDLAND, TX 79702			



BASIC
ENERGY SERVICES
PRESSURE PUMPING & WIRELINE

10244 NE Hwy. 61
P.O. Box 8613
Pratt, Kansas 67124
Phone 620-672-1201

FIELD SERVICE TICKET
1718 05810 A

DATE _____ TICKET NO. _____

DATE OF JOB 2-18-12	DISTRICT Pratt	NEW WELL <input checked="" type="checkbox"/>	OLD WELL <input type="checkbox"/>	PROD <input type="checkbox"/>	INJ <input type="checkbox"/>	WDW <input type="checkbox"/>	CUSTOMER ORDER NO.:
CUSTOMER Herman L Loeb LLC		LEASE Panning		179		WELL NO.	
ADDRESS		COUNTY Barren		STATE KS			
CITY		STATE		SERVICE CREW Melson Bower Sullivan			
AUTHORIZED BY		JOB TYPE: CNW 5/2 LS					
EQUIPMENT#	HRS	EQUIPMENT#	HRS	EQUIPMENT#	HRS	TRUCK CALLED	
38708 20920						DATE	AM/PM TIME
19826 19860						2-18-12	AM 6:00
37400						ARRIVED AT JOB	2-18-12 AM 8:45
						START OPERATION	2-19-12 AM 2:00
						FINISH OPERATION	2-19-12 AM 3:25
						RELEASED	2-19-12 AM 4:15
						MILES FROM STATION TO WELL 50	

CONTRACT CONDITIONS: (This contract must be signed before the job is commenced or merchandise is delivered).

The undersigned is authorized to execute this contract as an agent of the customer. As such, the undersigned agrees and acknowledges that this contract for services, materials, products, and/or supplies includes all of and only those terms and conditions appearing on the front and back of this document. No additional or substitute terms and/or conditions shall become a part of this contract without the written consent of an officer of Basic Energy Services LP.

SIGNED: _____
(WELL OWNER, OPERATOR, CONTRACTOR OR AGENT)

ITEM/PRICE REF. NO.	MATERIAL, EQUIPMENT AND SERVICES USED	UNIT	QUANTITY	UNIT PRICE	\$ AMOUNT
CP 104	50/50 POZ	SK	85		935 00
CP 103	60/40 POZ	SK	50		600 00
CL 102	Celloflabe	lb	22		81 40
C 700	Potassium Chloride	lb	195		292 50
CL 113	Gypsum	lb	360		270 00
CL 129	FLA-322	lb	36		270 00
CL 201	Gilsonite	lb	510		341 20
CF 481	Port collar	eg	1		3,500 00
CF 607	Latch Down Plug	eg	1		400 00
CF 1251	Auto fill float shoe	eg	1		360 00
CF 1651	Turbolizer	eg	10		1,100 00
CF 1901	Basket	eg	2		580 00
CF 2001	Scratchers	eg	6		450 00
C 704	KCI substitute	gal	4		140 00
CL 151	mud FLUSH	gal	1000		800 00
E 100	Pickup mileage	mi	50		212 50
E 101	Heavy mileage	mi	100		700 00
E 113	Gulf Delivery	TM	288		460 00
CE 204	Depth charge	thr	1		2,160 00

SUB TOTAL

CHEMICAL / ACID DATA:			

SERVICE & EQUIPMENT	%TAX ON \$	
MATERIALS	%TAX ON \$	
TOTAL		

SERVICE REPRESENTATIVE Robert [Signature]	THE ABOVE MATERIAL AND SERVICE ORDERED BY CUSTOMER AND RECEIVED BY: [Signature] (WELL OWNER OPERATOR CONTRACTOR OR AGENT)
FIELD SERVICE ORDER NO. _____	

BASIC

energy services, L.P.

TREATMENT REPORT

Customer HERMAN - LOEB	Lease No. 1-19	Date 02-19-12
Lease PANNING	Well # 1-19	
Field Order # 3810	Station PRATT KS	Casing 5 1/2
		Depth 3591
Type Job CNW 5 1/2 Long St-17	Formation	Legal Description 19-20-13
		County BARTON
		State KS

PIPE DATA		PERFORATING DATA		FLUID USED		TREATMENT RESUME		
Casing Size	Tubing Size	Shots/Ft		Acid	RATE	PRESS	ISIP	
5 1/2							5 Min.	
Depth 3591'	Depth	From	To	Pre Pad	Max			
Volume 85	Volume	From	To	Pad	Min		10 Min.	
Max Press 2000	Max Press	From	To	Frac	Avg		15 Min.	
Well Connection P.C.	Annulus Vol.	From	To		HMP Used		Annulus Pressure	
Plug Depth 3511	Packer Depth	From	To	Flush	Gas Volume		Total Load	

Customer Representative: _____ Station Manager: **DAVE SCOTT** Treater: *[Signature]*

Service Units	37920	33708	20920	19826	19860				
Driver Names	Gullison	MELSON	BOWPR						

Time	Casing Pressure	Tubing Pressure	Bbls. Pumped	Rate	Service Log
8:30 am					ON LOG Softly meet
					Run 86 str 5 1/2 - 15.5 csg.
					Basket 5, 19 (cont. 1, 2, 3, 4, 5, 11, 19, 22, 32, 42)
					Port collar 51, 21 @ 2726'
					Break circ. @ 40 str AND 70 str.
1:50 am					Casing on bottom
2:00					Hook by circ.
3:00	250		24	3	St mud flock
			5		St SPARK
				4	mix cont 85 @ 50/50 @ 14 app.
			20		cont mix. shut down with LITAC, Pump
				6	Release Plug
	350		68		St Whip w/ 2% KCL 4 ²⁰
	550			3.5	Lit Psi
					Slow Rate
3:30	1500		85		plug down
			7		plug RH w/ 30 str
			6		plug N.H w/ 20 str
					50% complete

THANK YOU

10244 NE Hiway 61 • P.O. Box 8613 • Pratt, KS 67124-8613 • (620) 672-1201 • Fax (620) 672-5383

Taylor Printing, Inc. 620-672-9654