

TYPE OR PRINT

# NOTICE OF INTENTION TO DRILL

C-1

TO BE FILED WITH THE STATE CORPORATION COMMISSION PRIOR TO COMMENCEMENT OF WELL

15-165-20,445-0000

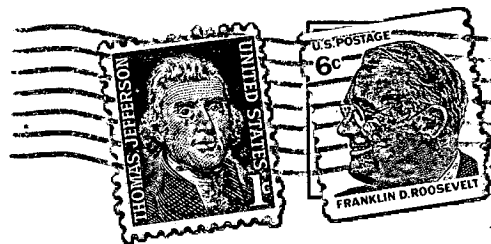
1. Operator John O. Farmer, Inc. Address 370 W. Wichita Ave., Russell, Ks. 67665
2. Lease name Oelkers Well No. 1 County Rush
3. Well Location NE/4 NE/4 SE/4 Sec. 23 Township 16 South Range 20 West
4. Well to be drilled 330 ft. from nearest lease line.
5. Drilling Contractor John O. Farmer, Inc. Address 370 W. Wichita Ave., Russell, Ks. 67665
6. Type of equipment: Rotary ☒ Cable Tool ☐ Approx. date operation to begin August 15, 19672.
7. Well to be drilled for Oil ☒ Gas ☐ Disposal ☐ Input ☐ Estimated Total Depth of Well 4,000 ft.
8. Depth of deepest fresh water well within one mile of location 100 ft. If none exists, write NONE
9. Ground elevation at location is approx. 25 ft. higher or \_\_\_\_\_ ft. lower than ground elevation at water well.
10. Depth of the deepest municipal water well within three miles of location \_\_\_\_\_ ft. If none exists, write NONE  
None
11. Operator states that he will set surface pipe at least 25 ft. below all Tertiary or unconsolidated deposits and, taking into consideration differences in ground elevations, that the minimum depth necessary, to the best of his knowledge and belief, to protect all fresh water zones is 100 ft. and operator agrees to set surface pipe at this location to a depth of not less than 250 ft. Alternate 1 ☐ Alternate 2 ☒.

REMARKS:

JOHN O. FARMER, INC.

Signature of Operator

*Wendel W. Earp*  
Wendel W. Earp, Secty.-Treas.



State Corporation Commission of Kansas

Conservation Division

~~500 Insurance Building~~

*Box 17027*

~~212 North Market~~

Wichita, Kansas ~~67202~~

*67217*

RECEIVED  
STATE CORPORATION COMMISSION

AUG 10 1972

CONSERVATION DIVISION  
Wichita, Kansas

(IF PREFERRED, MAIL IN ENVELOPE)