

TYPE OR PRINT

# NOTICE OF INTENTION TO DRILL

C-1

15-165-20,319-0000

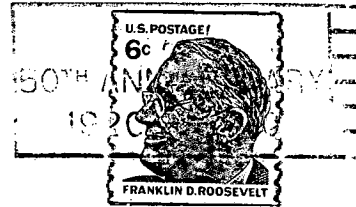
TO BE FILED WITH THE STATE CORPORATION COMMISSION PRIOR TO COMMENCEMENT OF WELL

1. Operator Rains & Williamson Oil Co., Inc. Address 1425 Wichita Plaza - Wichita, Kansas
2. Lease name Grumbein Well No. 1 County Rush
3. Well Location SE SE NW Sec. 7 Township 16S Range 20W
4. Well to be drilled 330 ft. from nearest lease line.
5. Drilling Contractor Rains & Williamson Oil Co., Inc. Address \_\_\_\_\_
6. Type of equipment: Rotary  Cable Tool  Approx. date operation to begin 5-14 1970
7. Well to be drilled for Oil  Gas  Disposal  Input  Estimated Total Depth of Well 4150 ft.
8. Depth of deepest fresh water well within one mile of location 60 ft. If none exists, write NONE \_\_\_\_\_
9. Ground elevation at location is approx. flat ft. higher or \_\_\_\_\_ ft. lower than ground elevation at water well.
10. Depth of the deepest municipal water well within three miles of location \_\_\_\_\_ ft. If none exists, write NONE None
11. Operator states that he will set surface pipe at least 25 ft. below all Tertiary or unconsolidated deposits and, taking into consideration differences in ground elevations, that the minimum depth necessary, to the best of his knowledge and belief, to protect all fresh water zones is 200 ft. and operator agrees to set surface pipe at this location to a depth of not less than 200 ft. Alternate 1  Alternate 2

REMARKS:

Signature of Operator *Wilson Rains*  
 WILSON RAINS





**State Corporation Commission of Kansas  
Conservation Division  
500 Insurance Building  
212 North Market  
Wichita, Kansas 67202**

**RECEIVED  
STATE CORPORATION COMMISSION  
MAY 14 1970  
CONSERVATION DIVISION  
Wichita, Kansas**

**(IF PREFERRED, MAIL IN ENVELOPE)**