



CONFIDENTIAL

WELL COMPLETION FORM
WELL HISTORY - DESCRIPTION OF WELL & LEASE

OPERATOR: License # 34681
 Name: EnCana Oil & Gas (USA) Inc.
 Address 1: 5851 LEGACY CIRCLE
 Address 2: _____
 City: PLANO State: TX Zip: 75024 +
 Contact Person: Sharon Cook
 Phone: (469) 304-6345
 CONTRACTOR: License # 33923
 Name: Precision Drilling, LLC
 Wellsite Geologist: Adam Shear
 Purchaser: None
 Designate Type of Completion:
 New Well Re-Entry Workover
 Oil WSW SWD SIOW
 Gas D&A ENHR SIGW
 OG GSW Temp. Abd.
 CM (Coal Bed Methane)
 Cathodic Other (Core, Expl., etc.): _____
 If Workover/Re-entry: Old Well Info as follows:
 Operator: _____
 Well Name: _____
 Original Comp. Date: _____ Original Total Depth: _____
 Deepening Re-perf. Conv. to ENHR Conv. to SWD
 Conv. to GSW
 Plug Back: _____ Plug Back Total Depth _____
 Commingled Permit #: _____
 Dual Completion Permit #: _____
 SWD Permit #: _____
 ENHR Permit #: _____
 GSW Permit #: _____

<u>07/06/2012</u>	<u>07/26/2012</u>	<u>08/23/2012</u>
Spud Date or Recompletion Date	Date Reached TD	Completion Date or Recompletion Date

API No. 15 - 15-135-25396-01-00
 Spot Description:
S2 S2 SE SE Sec. 3 Twp. 18 S. R. 21 East West
170 Feet from North / South Line of Section
660 Feet from East / West Line of Section
 Footages Calculated from Nearest Outside Section Corner:
 NE NW SE SW
 County: Ness
 Lease Name: PABST FARM 3H Well #: 2
 Field Name: McCormick
 Producing Formation: Miss Lime
 Elevation: Ground: 2163 Kelly Bushing: 2178
 Total Depth: 8725 Plug Back Total Depth: _____
 Amount of Surface Pipe Set and Cemented at: 1366 Feet
 Multiple Stage Cementing Collar Used? Yes No
 If yes, show depth set: _____ Feet
 If Alternate II completion, cement circulated from: _____
 feet depth to: _____ w/ _____ sx cmt.

Drilling Fluid Management Plan

(Data must be collected from the Reserve Pit)

Chloride content: 4000 ppm Fluid volume: 230 bbls
 Dewatering method used: Hauled to Disposal
 Location of fluid disposal if hauled offsite: _____
 Operator Name: American Warrior
 Lease Name: O'Brate License #: 405
 Quarter NW Sec. 36 Twp. 22 S. R. 23 East West
 County: Hodgeman Permit #: unknown

AFFIDAVIT

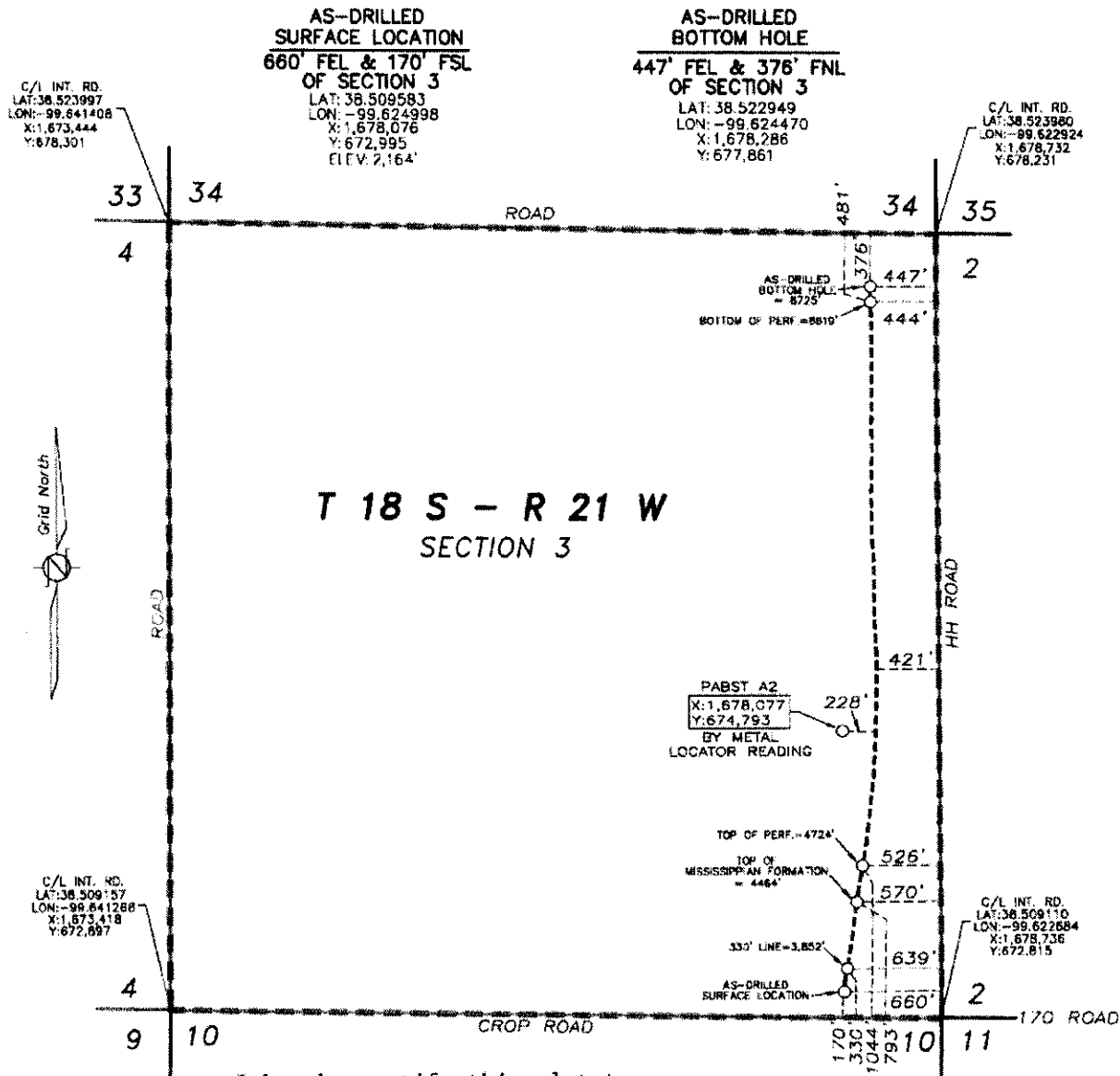
I am the affiant and I hereby certify that all requirements of the statutes, rules and regulations promulgated to regulate the oil and gas industry have been fully complied with and the statements herein are complete and correct to the best of my knowledge.

Submitted Electronically

KCC Office Use ONLY

Letter of Confidentiality Received
 Date: 11/01/2012
 Confidential Release Date: _____
 Wireline Log Received
 Geologist Report Received
 UIC Distribution
 ALT I II III Approved by: NAOMI JAMES Date: 11/02/2012

THIS DRAWING DOES NOT REPRESENT A BOUNDARY SURVEY. DISTANCES, COORDINATES AND BEARINGS SHOWN ARE NOT INTENDED TO BE DEFINITIVE IN ESTABLISHING ACTUAL TITLE BOUNDARIES. THIS DRAWING IS FOR CONSTRUCTION PURPOSES ONLY.
 All Bearings, Distances, and Coordinates shown hereon are based on the Kansas State Plane Coordinate System, N.A.D. 27 Datum, South Zone.



T 18 S - R 21 W
SECTION 3

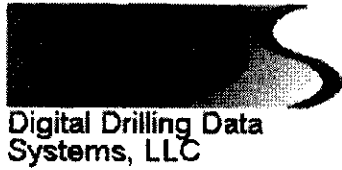
I hereby certify this plat true and correct to the best of my knowledge and belief.

Sharon Cook

Sharon Cook, Regulatory Adv **AS-DRILLED PLAT**
 REVIEW COPY **ENCANA OIL & GAS (USA) INC.**
PABST FARM 3H-2
NESS COUNTY, KANSAS
SCALE: 1" = 1000'

--- --- --- --- = UNIT LINE

REV: 10-1-2012
 REV: 9-25-2012
 DATE: 7-31-2012



Survey Report

Company: Encana Oil & Gas
Well: Pabts Farm 3H-2
API or UWI: 15135253960000
State: Kansas
County: Ness
Comment:

Location: Ness Co.
Rig: Precision 209
Job Number: DR1207107
Operator: Kenny Harris/S.Folmar
Magnetic Declination: 0.00
Proposed Azimuth: 2.63
North Reference: GRID

Tiein Survey Data:

MD	Inclination	Azimuth	TVD	NS	EW
0.00	0.00	0.00	0.00	0.00	0.00

MD	Inclination	Azimuth	TVD	NS	EW	CA	CD	VS	DLS
63.60	0.50	187.04	63.60	-0.28	-0.03	187.04	0.28	-0.28	0.79
153.70	0.44	176.99	153.70	-1.01	-0.06	183.62	1.01	-1.01	0.11
243.80	0.25	164.15	243.79	-1.55	0.01	179.71	1.55	-1.54	0.23
333.90	0.10	146.53	333.89	-1.80	0.10	176.67	1.80	-1.79	0.17
424.00	0.56	118.42	423.99	-2.08	0.54	165.53	2.14	-2.05	0.53
514.10	0.56	84.17	514.09	-2.24	1.35	148.88	2.62	-2.18	0.36
604.20	0.94	56.91	604.18	-1.79	2.40	126.75	3.00	-1.68	0.57
694.30	0.88	21.43	694.27	-0.75	3.27	102.84	3.36	-0.60	0.62
784.40	0.51	356.66	784.36	0.30	3.50	85.13	3.52	0.46	0.52
874.50	0.60	347.70	874.46	1.16	3.38	71.06	3.57	1.31	0.14
964.60	1.10	335.31	964.55	2.41	2.92	50.49	3.78	2.54	0.59
1054.70	0.97	327.99	1054.64	3.84	2.15	29.28	4.40	3.93	0.21
1144.80	0.84	339.37	1144.72	5.10	1.52	16.54	5.32	5.17	0.25
1234.90	0.82	352.57	1234.81	6.36	1.20	10.68	6.47	6.41	0.21
1325.00	0.35	7.31	1324.91	7.27	1.16	8.99	7.36	7.32	0.54
1401.00	0.40	330.10	1400.91	7.73	1.05	7.72	7.80	7.77	0.32
1491.00	0.30	330.00	1490.91	8.21	0.77	5.39	8.25	8.24	0.11
1582.00	0.30	325.10	1581.91	8.61	0.52	3.45	8.63	8.63	0.03
1672.00	0.20	269.80	1671.90	8.80	0.23	1.48	8.81	8.81	0.28

MD	Inclination	Azimuth	TVD	NS	EW	CA	CD	VS	DLS
1763.00	0.10	273.70	1762.90	8.81	-0.01	359.93	8.81	8.80	0.11
1853.00	0.10	111.50	1852.90	8.79	-0.02	359.89	8.79	8.77	0.22
1944.00	0.10	14.10	1943.90	8.83	0.08	0.50	8.83	8.83	0.17
2034.00	0.30	256.60	2033.90	8.85	-0.13	359.14	8.86	8.84	0.40
2124.00	0.30	308.50	2123.90	8.95	-0.55	356.50	8.96	8.91	0.29
2215.00	0.30	321.80	2214.90	9.28	-0.88	354.58	9.32	9.23	0.08
2305.00	0.30	355.00	2304.90	9.70	-1.05	353.84	9.76	9.64	0.19
2396.00	0.40	357.50	2395.90	10.26	-1.08	353.98	10.31	10.20	0.11
2486.00	0.40	352.70	2485.90	10.88	-1.14	354.04	10.94	10.82	0.04
2576.00	0.60	351.20	2575.89	11.66	-1.25	353.89	11.73	11.59	0.22
2667.00	0.40	232.10	2666.89	11.94	-1.57	352.50	12.04	11.85	0.95
2757.00	0.50	338.60	2756.89	12.11	-1.96	350.80	12.27	12.01	0.80
2848.00	0.50	345.50	2847.89	12.86	-2.21	350.27	13.05	12.75	0.07
2938.00	0.50	355.80	2937.88	13.63	-2.33	350.29	13.83	13.51	0.10
3028.00	0.60	344.40	3027.88	14.48	-2.49	350.25	14.69	14.35	0.16
3119.00	0.50	335.50	3118.87	15.30	-2.78	349.70	15.55	15.16	0.14
3209.00	0.60	335.70	3208.87	16.09	-3.14	348.96	16.39	15.93	0.11
3300.00	0.50	333.10	3299.87	16.87	-3.51	348.24	17.24	16.70	0.11
3345.00	0.90	353.50	3344.86	17.40	-3.64	348.18	17.78	17.22	1.03
3375.00	2.20	5.00	3374.85	18.21	-3.62	348.76	18.56	18.02	4.43
3405.00	4.00	6.90	3404.81	19.82	-3.44	350.14	20.12	19.64	6.01
3435.00	5.60	9.30	3434.70	22.30	-3.08	352.13	22.52	22.14	5.37
3465.00	7.20	10.60	3464.51	25.60	-2.50	354.42	25.72	25.46	5.35
3481.00	8.20	10.60	3480.37	27.70	-2.10	355.66	27.78	27.58	6.25
3519.00	10.50	10.00	3517.86	33.78	-1.00	358.30	33.79	33.70	6.06
3564.00	14.20	8.70	3561.81	43.28	0.54	0.72	43.28	43.26	8.24
3609.00	18.00	7.90	3605.04	55.62	2.33	2.40	55.67	55.67	8.46
3655.00	20.50	8.90	3648.46	70.62	4.56	3.69	70.77	70.76	5.48
3700.00	23.70	9.80	3690.15	87.32	7.32	4.79	87.63	87.57	7.15
3745.00	27.00	10.90	3730.81	106.27	10.79	5.80	106.82	106.66	7.41
3790.00	29.80	10.20	3770.39	127.31	14.70	6.59	128.16	127.85	6.27
3835.00	33.00	10.10	3808.80	150.39	18.83	7.14	151.56	151.09	7.11
3881.00	36.80	10.20	3846.52	176.29	23.47	7.58	177.85	177.18	8.26
3926.00	40.30	10.40	3881.71	203.88	28.48	7.95	205.86	204.97	7.78
3971.00	43.80	10.20	3915.12	233.53	33.87	8.25	235.97	234.84	7.78

MD	Inclination	Azimuth	TVD	NS	EW	CA	CD	VS	DLS
4016.00	46.00	9.80	3946.99	264.81	39.38	8.46	267.72	266.34	4.93
4061.00	48.40	8.70	3977.56	297.39	44.69	8.55	300.73	299.13	5.63
4107.00	50.80	7.60	4007.44	332.02	49.64	8.50	335.71	333.94	5.12
4152.00	50.70	7.80	4035.97	366.50	54.30	8.43	370.50	368.61	0.41
4197.00	50.70	7.90	4064.47	401.00	59.06	8.38	405.32	403.28	0.17
4242.00	50.80	7.80	4093.00	435.47	63.81	8.34	440.12	437.94	0.28
4287.00	51.20	7.20	4121.38	470.09	68.37	8.27	475.04	472.73	1.69
4332.00	55.60	7.50	4148.21	505.91	72.99	8.21	511.15	508.73	9.79
4377.00	60.70	7.90	4171.95	543.78	78.11	8.17	549.36	546.79	11.36
4423.00	64.60	9.10	4193.08	584.18	84.16	8.20	590.21	587.42	8.79
4468.00	68.80	9.00	4210.87	624.98	90.66	8.25	631.53	628.49	9.34
4513.00	72.90	9.40	4225.63	666.94	97.45	8.31	674.02	670.71	9.15
4558.00	77.60	9.10	4237.08	709.88	104.45	8.37	717.52	713.92	10.46
4603.00	82.40	9.80	4244.90	753.58	111.72	8.43	761.82	757.91	10.78
4649.00	87.20	10.10	4249.06	798.69	119.64	8.52	807.60	803.34	10.45
4722.00	88.80	9.80	4251.61	870.54	132.24	8.64	880.53	875.69	2.23
4754.00	89.60	10.00	4252.06	902.06	137.74	8.68	912.52	907.43	2.58
4786.00	89.70	10.30	4252.25	933.56	143.38	8.73	944.51	939.16	0.99
4817.00	89.20	9.90	4252.55	964.08	148.82	8.78	975.50	969.88	2.07
4849.00	89.10	8.70	4253.03	995.66	153.99	8.79	1007.49	1001.67	3.76
4881.00	89.30	7.80	4253.47	1027.32	158.58	8.78	1039.49	1033.52	2.88
4912.00	89.20	7.40	4253.88	1058.05	162.68	8.74	1070.48	1064.40	1.33
4944.00	89.80	7.20	4254.16	1089.79	166.75	8.70	1102.47	1096.29	1.98
4976.00	90.00	6.50	4254.21	1121.56	170.56	8.65	1134.45	1128.20	2.28
5007.00	90.50	7.30	4254.08	1152.33	174.29	8.60	1165.44	1159.12	3.04
5039.00	91.00	6.80	4253.66	1184.09	178.21	8.56	1197.42	1191.02	2.21
5071.00	91.20	6.40	4253.04	1215.87	181.89	8.51	1229.40	1222.93	1.40
5102.00	91.00	6.80	4252.45	1246.66	185.45	8.46	1260.38	1253.85	1.44
5134.00	90.50	6.10	4252.03	1278.45	189.05	8.41	1292.35	1285.78	2.69
5165.00	90.20	6.20	4251.84	1309.27	192.37	8.36	1323.33	1316.72	1.02
5197.00	90.80	6.60	4251.56	1341.07	195.94	8.31	1355.31	1348.65	2.25
5228.00	91.60	7.00	4250.91	1371.85	199.61	8.28	1386.29	1379.56	2.89
5260.00	91.40	6.80	4250.07	1403.60	203.45	8.25	1418.27	1411.46	0.88
5292.00	90.10	6.60	4249.66	1435.38	207.18	8.21	1450.26	1443.38	4.11
5323.00	88.60	5.30	4250.01	1466.21	210.39	8.17	1481.23	1474.32	6.40

MD	Inclination	Azimuth	TVD	NS	EW	CA	CD	VS	DLS
5355.00	86.80	3.30	4251.29	1498.09	212.79	8.08	1513.13	1506.28	8.40
5387.00	87.10	3.00	4252.99	1530.00	214.55	7.98	1544.97	1538.23	1.32
5418.00	87.20	3.60	4254.54	1560.91	216.33	7.89	1575.83	1569.19	1.96
5450.00	87.50	3.90	4256.01	1592.81	218.42	7.81	1607.71	1601.15	1.33
5482.00	89.10	3.60	4256.96	1624.72	220.51	7.73	1639.62	1633.13	5.09
5513.00	91.00	3.30	4256.94	1655.67	222.38	7.65	1670.53	1664.13	6.20
5545.00	91.60	3.20	4256.21	1687.61	224.19	7.57	1702.43	1696.12	1.90
5576.00	92.50	3.00	4255.10	1718.54	225.87	7.49	1733.32	1727.09	2.97
5608.00	92.10	2.30	4253.82	1750.48	227.35	7.40	1765.18	1759.07	2.52
5640.00	91.60	1.80	4252.78	1782.44	228.49	7.30	1797.03	1791.05	2.21
5671.00	92.40	1.60	4251.70	1813.41	229.41	7.21	1827.86	1822.03	2.66
5703.00	91.10	1.80	4250.73	1845.38	230.36	7.12	1859.70	1854.01	4.11
5734.00	89.40	1.30	4250.59	1876.37	231.20	7.02	1890.56	1885.00	5.72
5766.00	89.50	1.50	4250.90	1908.36	231.98	6.93	1922.40	1916.99	0.70
5797.00	90.10	1.90	4251.01	1939.34	232.80	6.85	1953.28	1947.99	2.33
5829.00	90.00	1.50	4250.98	1971.33	233.85	6.77	1985.15	1979.98	1.29
5861.00	88.80	0.90	4251.31	2003.32	234.52	6.68	2017.00	2011.97	4.19
5892.00	89.10	0.70	4251.88	2034.31	234.95	6.59	2047.83	2042.95	1.16
5924.00	89.10	0.50	4252.38	2066.30	235.28	6.50	2079.66	2074.92	0.62
5955.00	88.80	0.50	4252.95	2097.30	235.56	6.41	2110.48	2105.90	0.97
5987.00	89.60	0.70	4253.40	2129.29	235.89	6.32	2142.32	2137.87	2.58
6019.00	89.10	1.00	4253.76	2161.29	236.36	6.24	2174.17	2169.86	1.82
6050.00	89.00	0.90	4254.27	2192.28	236.88	6.17	2205.04	2200.84	0.46
6082.00	88.40	359.80	4255.00	2224.27	237.07	6.08	2236.87	2232.81	3.91
6114.00	88.70	359.70	4255.81	2256.26	236.93	5.99	2268.67	2264.75	0.99
6145.00	88.30	358.80	4256.62	2287.25	236.53	5.90	2299.44	2295.69	3.18
6177.00	88.70	358.10	4257.46	2319.22	235.66	5.80	2331.17	2327.59	2.52
6208.00	89.10	357.70	4258.08	2350.20	234.53	5.70	2361.87	2358.48	1.82
6240.00	88.50	357.50	4258.73	2382.16	233.19	5.59	2393.55	2390.35	1.98
6272.00	89.00	357.50	4259.42	2414.12	231.79	5.48	2425.22	2422.22	1.56
6303.00	89.80	357.60	4259.75	2445.09	230.47	5.38	2455.93	2453.09	2.60
6335.00	90.50	357.50	4259.66	2477.06	229.10	5.28	2487.63	2484.97	2.21
6367.00	90.70	357.50	4259.33	2509.03	227.70	5.19	2519.34	2516.84	0.62
6398.00	92.00	357.70	4258.80	2539.99	226.41	5.09	2550.06	2547.71	4.24
6430.00	92.60	358.50	4257.31	2571.95	225.35	5.01	2581.80	2579.58	3.12

MD	Inclination	Azimuth	TVD	NS	EW	CA	CD	VS	DLS
6462.00	93.30	358.80	4255.67	2603.90	224.59	4.93	2613.57	2611.46	2.38
6493.00	93.00	359.70	4253.96	2634.85	224.19	4.86	2644.37	2642.36	3.06
6525.00	92.00	0.80	4252.57	2666.82	224.33	4.81	2676.24	2674.30	4.64
6557.00	91.80	1.00	4251.51	2698.80	224.83	4.76	2708.14	2706.27	0.88
6588.00	92.00	0.50	4250.48	2729.78	225.24	4.72	2739.05	2737.24	1.74
6620.00	91.40	0.20	4249.53	2761.76	225.43	4.67	2770.95	2769.20	2.10
6632.00	91.40	359.90	4249.24	2773.76	225.44	4.65	2782.90	2781.18	2.50
6663.00	91.60	0.30	4248.43	2804.75	225.50	4.60	2813.80	2812.14	1.44
6695.00	92.10	0.00	4247.39	2836.73	225.58	4.55	2845.69	2844.09	1.82
6726.00	90.30	359.20	4246.74	2867.72	225.36	4.49	2876.56	2875.04	6.35
6758.00	87.90	357.50	4247.25	2899.70	224.44	4.43	2908.37	2906.94	9.19
6790.00	87.70	357.60	4248.47	2931.65	223.08	4.35	2940.12	2938.80	0.70
6821.00	88.60	357.80	4249.47	2962.61	221.83	4.28	2970.90	2969.66	2.97
6853.00	88.80	356.90	4250.20	2994.56	220.35	4.21	3002.66	3001.52	2.88
6884.00	89.30	356.60	4250.71	3025.51	218.60	4.13	3033.40	3032.35	1.88
6916.00	89.60	356.10	4251.02	3057.44	216.56	4.05	3065.10	3064.16	1.82
6947.00	89.40	356.30	4251.29	3088.37	214.50	3.97	3095.81	3094.96	0.91
6979.00	88.90	357.70	4251.77	3120.32	212.83	3.90	3127.57	3126.80	4.85
7011.00	88.70	358.60	4252.44	3152.30	211.80	3.84	3159.41	3158.70	2.88
7042.00	88.90	358.40	4253.09	3183.28	210.99	3.79	3190.27	3189.61	0.91
7074.00	88.80	358.60	4253.73	3215.27	210.15	3.74	3222.13	3221.52	0.70
7105.00	89.70	359.20	4254.13	3246.26	209.55	3.69	3253.01	3252.45	3.49
7137.00	89.80	0.40	4254.27	3278.26	209.44	3.66	3284.94	3284.41	3.76
7169.00	89.40	0.00	4254.50	3310.26	209.55	3.62	3316.88	3316.38	1.77
7200.00	88.90	359.50	4254.96	3341.25	209.42	3.59	3347.81	3347.34	2.28
7232.00	88.90	358.40	4255.57	3373.24	208.83	3.54	3379.70	3379.27	3.44
7264.00	89.30	359.60	4256.07	3405.23	208.27	3.50	3411.59	3411.20	3.95
7295.00	89.70	0.60	4256.35	3436.23	208.33	3.47	3442.54	3442.17	3.47
7327.00	90.50	1.20	4256.29	3468.22	208.83	3.45	3474.51	3474.15	3.12
7359.00	91.10	1.90	4255.84	3500.21	209.69	3.43	3506.48	3506.14	2.88
7390.00	91.20	2.00	4255.22	3531.18	210.75	3.42	3537.47	3537.14	0.46
7422.00	91.40	2.00	4254.49	3563.16	211.87	3.40	3569.45	3569.13	0.63
7454.00	92.40	1.70	4253.43	3595.12	212.90	3.39	3601.42	3601.10	3.26
7485.00	93.00	2.00	4251.97	3626.07	213.90	3.38	3632.38	3632.07	2.16
7517.00	91.10	0.70	4250.83	3658.04	214.65	3.36	3664.33	3664.04	7.19

MD	Inclination	Azimuth	TVD	NS	EW	CA	CD	VS	DLS
7549.00	90.70	0.40	4250.33	3690.03	214.96	3.33	3696.29	3696.01	1.56
7580.00	90.60	359.40	4249.97	3721.03	214.90	3.31	3727.23	3726.97	3.24
7612.00	90.00	359.40	4249.81	3753.03	214.57	3.27	3759.16	3758.92	1.87
7643.00	90.20	0.20	4249.75	3784.03	214.46	3.24	3790.10	3789.88	2.66
7675.00	90.80	359.30	4249.47	3816.03	214.32	3.21	3822.04	3821.84	3.38
7707.00	92.10	359.30	4248.66	3848.01	213.93	3.18	3853.96	3853.78	4.06
7739.00	91.70	0.10	4247.60	3880.00	213.76	3.15	3885.88	3885.72	2.79
7770.00	90.40	0.30	4247.04	3910.99	213.87	3.13	3916.83	3916.68	4.24
7802.00	89.00	0.20	4247.20	3942.99	214.01	3.11	3948.79	3948.65	4.39
7834.00	88.70	1.30	4247.84	3974.98	214.43	3.09	3980.76	3980.63	3.56
7865.00	88.60	0.80	4248.58	4005.96	215.00	3.07	4011.73	4011.61	1.64
7897.00	88.80	0.90	4249.30	4037.95	215.47	3.05	4043.70	4043.59	0.70
7928.00	89.10	0.00	4249.87	4068.95	215.72	3.03	4074.66	4074.56	3.06
7960.00	89.30	359.80	4250.32	4100.94	215.86	3.01	4106.61	4106.52	0.88
7991.00	89.30	0.40	4250.69	4131.94	215.71	2.99	4137.57	4137.49	1.94
8023.00	89.00	0.60	4251.17	4163.94	215.99	2.97	4169.53	4169.46	1.13
8054.00	88.70	359.90	4251.79	4194.93	216.13	2.95	4200.49	4200.43	2.46
8086.00	88.70	359.70	4252.52	4226.92	216.02	2.93	4232.44	4232.38	0.62
8118.00	89.40	359.10	4253.05	4258.91	215.68	2.90	4264.37	4264.32	2.88
8149.00	90.10	359.90	4253.18	4289.91	215.41	2.87	4295.32	4295.28	3.43
8181.00	89.40	0.20	4253.32	4321.91	215.44	2.85	4327.28	4327.24	2.38
8213.00	88.10	0.30	4254.02	4353.90	215.58	2.83	4359.24	4359.21	4.07
8244.00	88.20	359.90	4255.02	4384.89	215.63	2.82	4390.19	4390.16	1.33
8276.00	88.20	0.30	4256.03	4416.87	215.69	2.80	4422.13	4422.11	1.25
8308.00	89.20	0.00	4256.75	4448.86	215.77	2.78	4454.09	4454.08	3.26
8339.00	90.10	0.10	4256.94	4479.86	215.80	2.76	4485.06	4485.04	2.92
8371.00	89.60	359.60	4257.03	4511.86	215.72	2.74	4517.01	4517.01	2.21
8402.00	88.70	359.90	4257.49	4542.86	215.58	2.72	4547.97	4547.96	3.06
8434.00	88.90	359.20	4258.16	4574.85	215.33	2.69	4579.91	4579.91	2.27
8466.00	88.70	359.50	4258.83	4606.84	214.97	2.67	4611.85	4611.85	1.13
8497.00	88.60	359.40	4259.56	4637.83	214.67	2.65	4642.79	4642.79	0.46
8529.00	88.70	358.90	4260.31	4669.82	214.19	2.63	4674.73	4674.73	1.59
8561.00	88.60	359.10	4261.07	4701.80	213.64	2.60	4706.65	4706.65	0.70
8592.00	87.20	358.40	4262.20	4732.77	212.96	2.58	4737.56	4737.56	5.05
8624.00	87.30	358.80	4263.74	4764.73	212.18	2.55	4769.45	4769.44	1.29

MD	Inclination	Azimuth	TVD	NS	EW	CA	CD	VS	DLS
8656.00	89.30	359.20	4264.69	4796.71	211.62	2.53	4801.37	4801.36	6.37
8677.00	89.20	358.70	4264.96	4817.70	211.24	2.51	4822.33	4822.32	2.43
8725.00	89.20	358.70	4265.63	4865.68	210.15	2.47	4870.22	4870.20	0.00