



KANSAS CORPORATION COMMISSION 1100787
OIL & GAS CONSERVATION DIVISION

Form ACO-1
June 2009
Form Must Be Typed
Form must be Signed
All blanks must be Filled

WELL COMPLETION FORM
WELL HISTORY - DESCRIPTION OF WELL & LEASE

OPERATOR: License # 33036
Name: Strata Exploration, Inc.
Address 1: PO BOX 401
Address 2: _____
City: FAIRFIELD State: IL Zip: 62837 + 0401
Contact Person: John R Kinney
Phone: (618) 842-2610
CONTRACTOR: License # 5142
Name: Sterling Drilling Company
Wellsite Geologist: Jon Christensen
Purchaser: _____

Designate Type of Completion:

- New Well Re-Entry Workover
- Oil WSW SWD SIOW
 Gas D&A ENHR SIGW
 OG GSW Temp. Abd.
 CM (Coal Bed Methane)
 Cathodic Other (Core, Expl., etc.): _____

If Workover/Re-entry: Old Well Info as follows:

Operator: _____
Well Name: _____
Original Comp. Date: _____ Original Total Depth: _____
 Deepening Re-perf. Conv. to ENHR Conv. to SWD
 Conv. to GSW
 Plug Back: _____ Plug Back Total Depth
 Commingled Permit #: _____
 Dual Completion Permit #: _____
 SWD Permit #: _____
 ENHR Permit #: _____
 GSW Permit #: _____

<u>07/06/2012</u>	<u>07/16/2012</u>	<u>09/12/2012</u>
Spud Date or Recompletion Date	Date Reached TD	Completion Date or Recompletion Date

API No. 15 - 15-047-21610-00-00

Spot Description:
NE SW SE SE Sec. 36 Twp. 26 S. R. 20 East West
460 Feet from North / South Line of Section
703 Feet from East / West Line of Section

Footages Calculated from Nearest Outside Section Corner:

- NE NW SE SW

County: Edwards
Lease Name: Miller Trust Well #: 1-36

Field Name: _____
Producing Formation: Lansing

Elevation: Ground: 2260 Kelly Bushing: 2264

Total Depth: 4916 Plug Back Total Depth: _____

Amount of Surface Pipe Set and Cemented at: 523 Feet

Multiple Stage Cementing Collar Used? Yes No

If yes, show depth set: _____ Feet

If Alternate II completion, cement circulated from: _____
feet depth to: _____ w/ _____ sx cmt.

Drilling Fluid Management Plan

(Data must be collected from the Reserve Pit)

Chloride content: 6600 ppm Fluid volume: 900 bbls

Dewatering method used: Hauled to Disposal

Location of fluid disposal if hauled offsite: _____

Operator Name: Roberts Recources

Lease Name: MARY License #: 32781

Quarter NW Sec. 16 Twp. 29 S. R. 18 East West

County: Kiowa Permit #: D28396

AFFIDAVIT

I am the affiant and I hereby certify that all requirements of the statutes, rules and regulations promulgated to regulate the oil and gas industry have been fully complied with and the statements herein are complete and correct to the best of my knowledge.

Submitted Electronically

KCC Office Use ONLY

- Letter of Confidentiality Received
Date: _____
 Confidential Release Date: _____
 Wireline Log Received
 Geologist Report Received
 UIC Distribution
ALT I II III Approved by: Deanna Gantson Date: 11/14/2012



1100787

Operator Name: Strata Exploration, Inc. Lease Name: Miller Trust Well #: 1-36
Sec. 36 Twp. 26 S. R. 20 East West County: Edwards

INSTRUCTIONS: Show important tops and base of formations penetrated. Detail all cores. Report all final copies of drill stems tests giving interval tested, time tool open and closed, flowing and shut-in pressures, whether shut-in pressure reached static level, hydrostatic pressures, bottom hole temperature, fluid recovery, and flow rates if gas to surface test, along with final chart(s). Attach extra sheet if more space is needed. Attach complete copy of all Electric Wire-line Logs surveyed. Attach final geological well site report.

Drill Stem Tests Taken <i>(Attach Additional Sheets)</i>	<input checked="" type="checkbox"/> Yes <input type="checkbox"/> No	<input type="checkbox"/> Log Formation (Top), Depth and Datum <input type="checkbox"/> Sample Name Top Datum **see geo report
Samples Sent to Geological Survey	<input checked="" type="checkbox"/> Yes <input type="checkbox"/> No	
Cores Taken	<input type="checkbox"/> Yes <input checked="" type="checkbox"/> No	
Electric Log Run	<input checked="" type="checkbox"/> Yes <input type="checkbox"/> No	
Electric Log Submitted Electronically <i>(If no, Submit Copy)</i>	<input checked="" type="checkbox"/> Yes <input type="checkbox"/> No	
List All E. Logs Run:		
Microlog Halliburton Induction Comp Density Neutron		

CASING RECORD <input checked="" type="checkbox"/> New <input type="checkbox"/> Used							
Report all strings set-conductor, surface, intermediate, production, etc.							
Purpose of String	Size Hole Drilled	Size Casing Set (In O.D.)	Weight Lbs. / Ft.	Setting Depth	Type of Cement	# Sacks Used	Type and Percent Additives
Surface	12.25	8.625	23	523	see cement ticket	350	see cement ticket
Longstring	7.875	5.5	15.5	4915	see cement ticket	250	see cement ticket

ADDITIONAL CEMENTING / SQUEEZE RECORD				
Purpose:	Depth Top Bottom	Type of Cement	# Sacks Used	Type and Percent Additives
___ Perforate				
___ Protect Casing	-			
___ Plug Back TD				
___ Plug Off Zone	-			

Shots Per Foot	PERFORATION RECORD - Bridge Plugs Set/Type Specify Footage of Each Interval Perforated	Acid, Fracture, Shot, Cement Squeeze Record <i>(Amount and Kind of Material Used)</i>	Depth
3	Miss Chert	18bbl 15% MCA-Fe, 18bbl 2% KCL wtr	4808-4820
3	Lansing "A"	250gal 15% MCA-Fe, 18bbl 2% KCL wtr	4192-4200

TUBING RECORD:	Size: <u>2 3/8"</u>	Set At: <u>4194</u>	Packer At: <u>4162</u>	Liner Run: <input type="checkbox"/> Yes <input type="checkbox"/> No
Date of First, Resumed Production, SWD or ENHR.	Producing Method: <input type="checkbox"/> Flowing <input type="checkbox"/> Pumping <input type="checkbox"/> Gas Lift <input type="checkbox"/> Other (Explain) _____			
Estimated Production Per 24 Hours	Oil Bbls.	Gas Mcf	Water Bbls.	Gas-Oil Ratio Gravity

DISPOSITION OF GAS: <input type="checkbox"/> Vented <input checked="" type="checkbox"/> Sold <input type="checkbox"/> Used on Lease <i>(If vented, Submit ACO-18.)</i>	METHOD OF COMPLETION: <input type="checkbox"/> Open Hole <input type="checkbox"/> Perf. <input type="checkbox"/> Dually Comp. <input type="checkbox"/> Commingled <i>(Submit ACO-5) (Submit ACO-4)</i> <input type="checkbox"/> Other (Specify) _____	PRODUCTION INTERVAL: <u>4192'-4200'</u>
--	--	--

LITHOLOGY STRIP LOG

WellSight Systems

Scale 1:240 (5"=100') Imperial

Well Name: Rose #1-6
Location: 2104' FSL & 1400' FWL, Sec. 6-T27S-R19W, Kiowa Co., KS.
Licence Number: 15-047-21611-0000 Region: Wildcat
Spud Date: 7/12/2012 Drilling Completed: 7/23/2012
Surface Coordinates: 2104' FSL & 1400' FWL, Sec. 6-T27S-R19W

Bottom Hole Same as Above
Coordinates:
Ground Elevation (ft): 2252' K.B. Elevation (ft): 2263'
Logged Interval (ft): 3800' To: 4930' Total Depth (ft): 4930'
Formation: Mississippian at Total Depth
Type of Drilling Fluid: Freshwater/Gel to 3121'; Chemical Gel 3121' to 4930'
Printed by MUD.LOG from WellSight Systems 1-800-447-1534 www.WellSight.com

OPERATOR

Company: Strata Exploration, Inc.
Address: P.O. Box 401
Fairfield, IL. 62837-0401

GEOLOGIST

Name: Jon D. Christensen
Company: Consulting Petroleum Geologist
Address: 9002 W. Silver Hollow St.
Wichita, KS. 67205-8856

Cores

None Taken

DSTs

DST #1(Lansing 'A') 4205' - 4221' Test Times 15"-45"-45"-90" IFP Strong Blow Gas to Surface in 4 Min., FFP Strong Blow Gas to Surface throughout Gauged Max. 468 MCFG; REC: 125' WM(20%W, 80%M), 125' MW(80%W, 20%M) CI 109,000 Mud 6600; IFP 70-96#, ISIP 1432#, FFP 70-100#, FSIP 1397#, IHP 2020#, FHP 2013#, BHT 115 Deg F.

DST #2(Lansing 'B') 4236' - 4258' Test Times 15"-45"-30"-60" IFP Strong Blow BOB/25 Sec., 2" Blowback on ISI, FFP Strong Blow BOB/4 Min., no Gas to surface, 10" Blowback on FSI; REC: 1100' Gas in Pipe, 155' GM&WCO(12%G, 45%O, 19%W, 24%M), 235' SOCMW(1%O, 93%W, 6%M) CI 86,000, Mud 4600; IFP 51-82#, ISIP 1410#, FFP 107-178#, FSIP 1391#, IHP 2022#, FHP 1998#, BHT 120 Deg. F.

DST #3(Miss. Chert/Dolo.) 4770' - 4829' Test Times 15"-45"-15"-45" IFP Very Weak 0.5" Blow, FFP No Blow, no Blowback on SI's; REC: 5' Hvy. Drlg Mud, no shows; IFP 22-24#, ISIP 68#, FFP 25-25#, FSIP 39#, IHP 2322#, FHP 2264#, BHT 117 Deg. F.

DST #4(Miss. Chert/Dolo.) 4829' - 4845' Test Times 15"-45"-30"-60" IFP Weak Blow built to 1.5", FFP Weak Blow built to 1.5", no Blowback on SI's; REC: 5' CO, 60' OCWM(24%O, 16%W, 60%M), 65' SOCMW(2%O, 50%W, 48%M), CI 83,000, Mud 8800; IFP 19-40#, ISIP 1520#, FFP 46-78#, FSIP 1528#, IHP 2348#, FHP 2331#, BHT 123 Deg F.

Comments

7/12/12 MIRU Sterling Drilling Co. Rig #2, Spud at 8:00 PM; 7/13/12 TD. 523' - Wiper Trip prior to setting Surface Casing; 7/14/12 TD. 523' - WOC; 7/15/12 Drilling at 1780'; 7/16/12 Drilling at 2833'; 7/17/12 Drilling at 3532'; 7/18/12 Drilling at 4150'; 7/19/12 TD. 4221' - TIH after DST #1; 7/20/12 Drilling at 4365'; 7/21/12 TD. 4708' - CFS; 7/22/12 TD. 4829' - TIH after DST #3; 7/23/12 RTD. 4930' - CCH for Logs

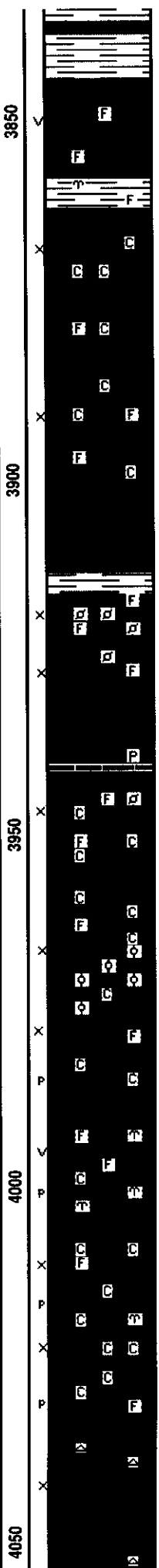
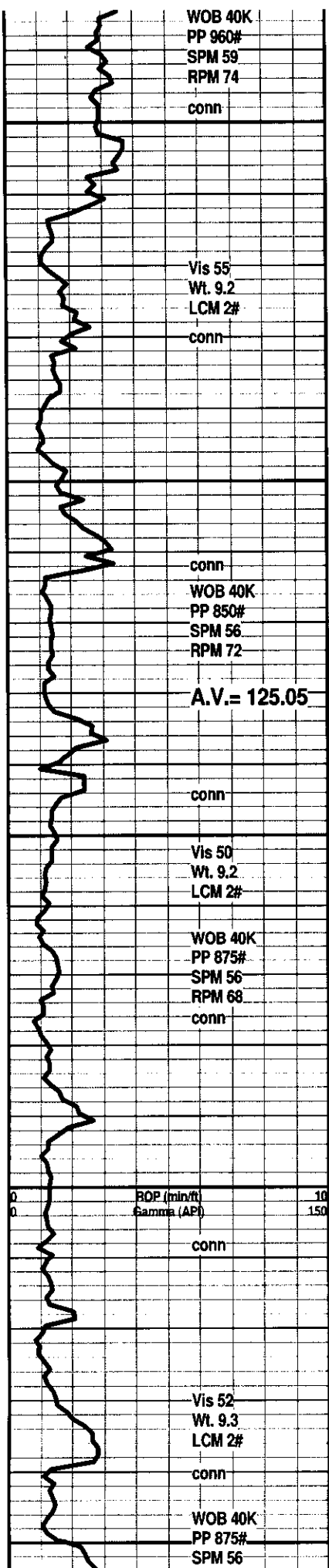
Set new 8 5/8"(23#) Surface Casing at 519' w/350 sx. cement(Basic Energy Services). Cement to Cellar. PD. 12:45 PM. 7/13/12. Cement fell 30' - cement through 1" with 75 additional sx. Completed 2:00 AM. 7/14/12.

Surveys: 0.25 Deg. at 523'(Surface Casing); 0.50 Deg. at 4221'(DST #1); 1.50 Deg. at 4829'(DST #3)

Pipe Strap at 4221'(DST #1): Strap 1.62' Short to the Board, no correction made to the Board.

ROCK TYPES

 Anhy  Bent  Brec  Cht	 Clyst  Coal  Congl  Dol	 Gyp  Igne  Lmst  Meta	 Mrst  Salt  Shale  Shcol	 Shgy  Sltst  Ss  Till
---	---	---	--	---



SH; med to dk gy, platy to flakey

LM; tan, off wh, buff, foss ip, most well cem, interbdd foss lmst w/fair vug por, lt to med yel min fluor, no stn or odor, ns.

SH; grn, gy grn, platy, occ foss

LM; tan to cream, lt brn, f to med xln, fair to occ gd interxln por, minor soft chalky mtz, lt yel min fluor, no stn or odor, ns.

LM; tan to cream, off wh, f to med xln, fair to gd interxln por, scat foss mat, interbdd soft chalky lmst, lt yel min fluor, no stn or odor, ns.

POOR SAMPLES: 75 - 80% SHALE, REDUCE PUMP PRESSURE TO 55 TO 56 SPM = 850#

SH; med to dk gy, red, grn, slough shales

LM; tan to cream, lt brn, fxln w/scat foss mat. occ finely pelletal, fair interpart por, lt yel min fluor, ns.

SH; blk, carb lp, platy, trc pyr

LM; wh, lt gy, off wh, f to med xln, some gran text, fair to gd interxln por, scat foss mat, lt to med yel fluor, some very chalky - soft, ns.

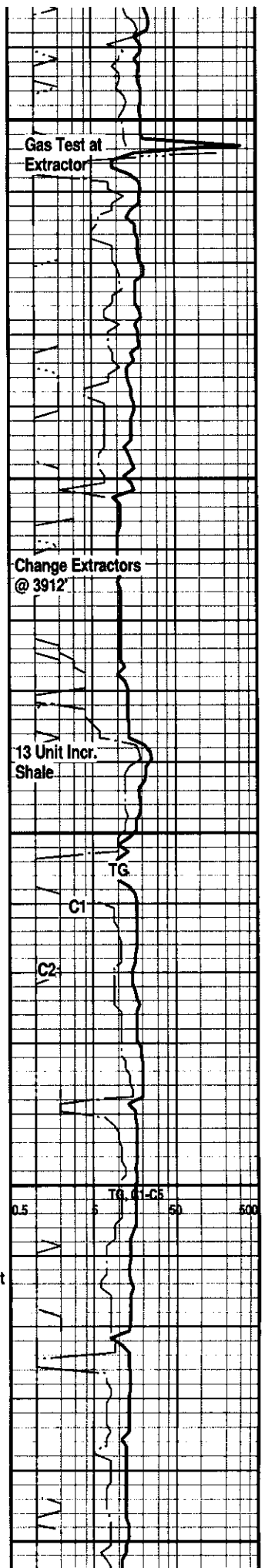
LM; off wh, tan, scat foss mat - finely pelletal ip, trc oolitic lmst, poor to fair interpart por, lt yel min fluor, scat chalky lmst, no stn or odor, ns.

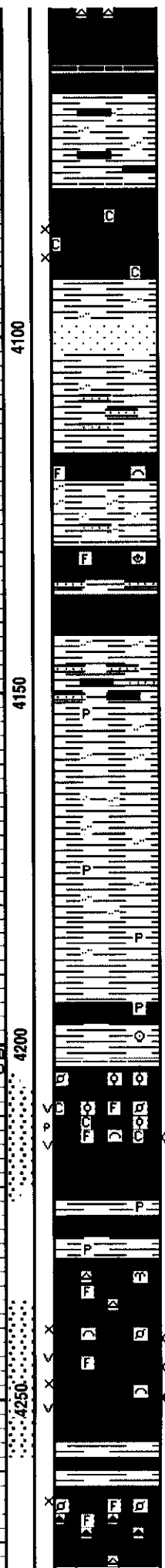
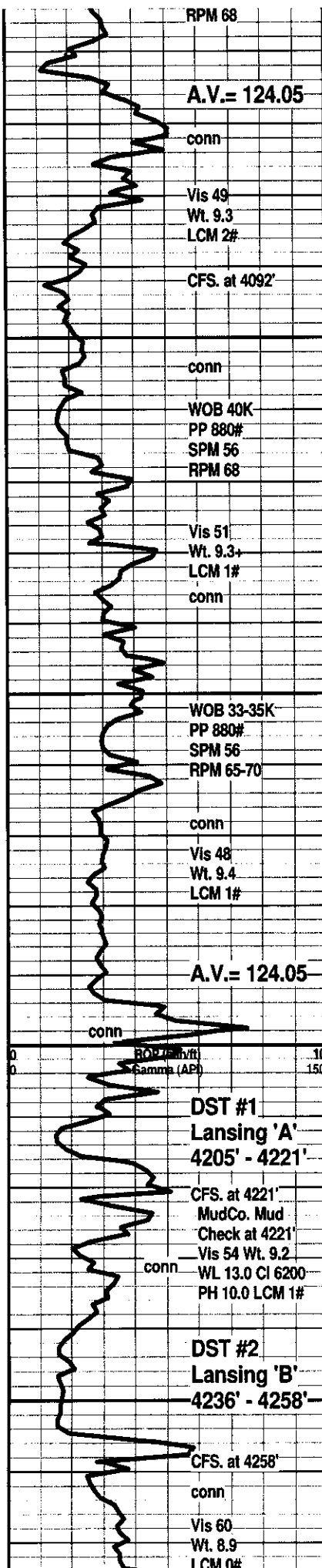
LM; off wh, tan, foss ip, scat good vug and p-p por, lt yel min fluor, no stn or odor, no gas kick, barren, ns.

LM; off wh, lt gy, buff, f to med xln, some gran text, abnt soft chalk and chalky lmst, lt yel fluor, fair to occ gd interxln w/p-p por, no stn, no gas kick, ns.

LM; tan to buff, off wh, f to med xln, fair to gd interxln w/occ p-p por, interbdd tan to lt brn hd micrite, decr. chalk and chalky mtz, lt yel fluor, occ tan to off wh cht, ns.

LM; med brn, dense, scat tan/off wh cht, no vis por, tite





HEEBNER SHALE 4059(-1796)

SH; blk, carb ip, platy, trc gas bubb.
LM; med to dk brn, v. hd, blocky, tite

SH; grn, gy gm, silty w/some interbdd sltst

TORONTO 4079(-1816)

LM; wh, off wh, fxln to sucrosic text, partly dolomitic, fair interxln por, lt yel fluor, occ soft chalky mtx, no vis stn, no odor, no vis gas bubbles, no gas kick, barren

DOUGLAS SHALE 4092(-1829)

SH; lt gy, soft, silty ip, interbdd vf to fgr qtz ss, tite mica ss, platy

SH; lt to med gy, gm, silty w/rare vf gr qtz ss strngs.

LM; lt to med brn, foss, hd, blocky, no vis por, lt yel min fluor, ns.

SH; lt gy, gy gm, silty to rarely sandy, occ mica

LM; lt brn, occ med brn, foss, dense, blocky, scat hd vf gr qtz ss, tite

SLTST; lt gy, sandy ip, firm

SH; lt gy, sandy to occ lmy, v. firm, platy, scat dissem pyr

SH; lt to med gy, silty ip, occ sticky - gumbo

SH; lt to med gy, occ silty, firm, rarely pyr

BROWN LMST. 4194(-1931)

LM; med to occ dk brn, micritic, hd, trc pyr

LANSING 'A' 4203(-1940)

LM; wh, off wh, foss ip, rare small oolites, most w/fair to occ gd p-p and small vug por, med yel fluor, faint sweet gas odor, gas bubbles, chalky mtx, occ cse spar calc xtals, trc med brn oil stn, trc. lt clr FO. droplets, pred. gas show

DST #1: Lansing 'A' 4205' - 4221'

SH; med gy, gm, platy, occ pyr

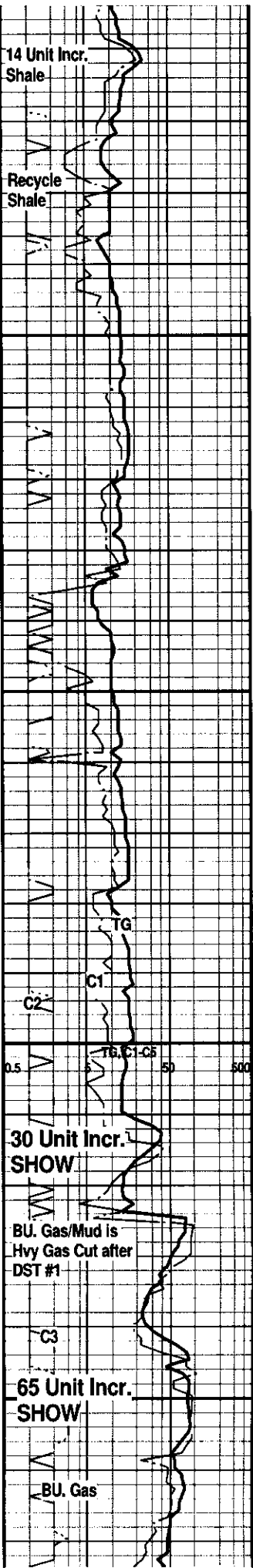
LANSING 'B' 4230(-1967)

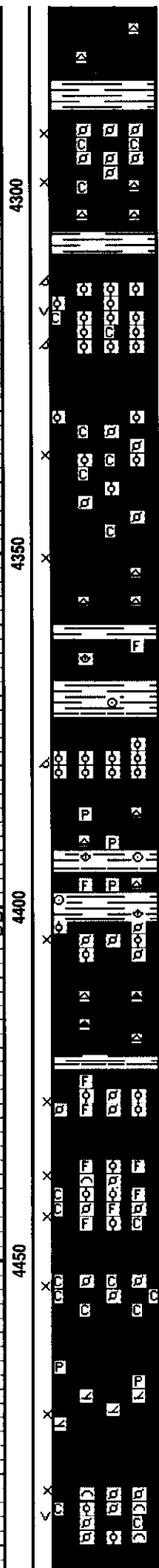
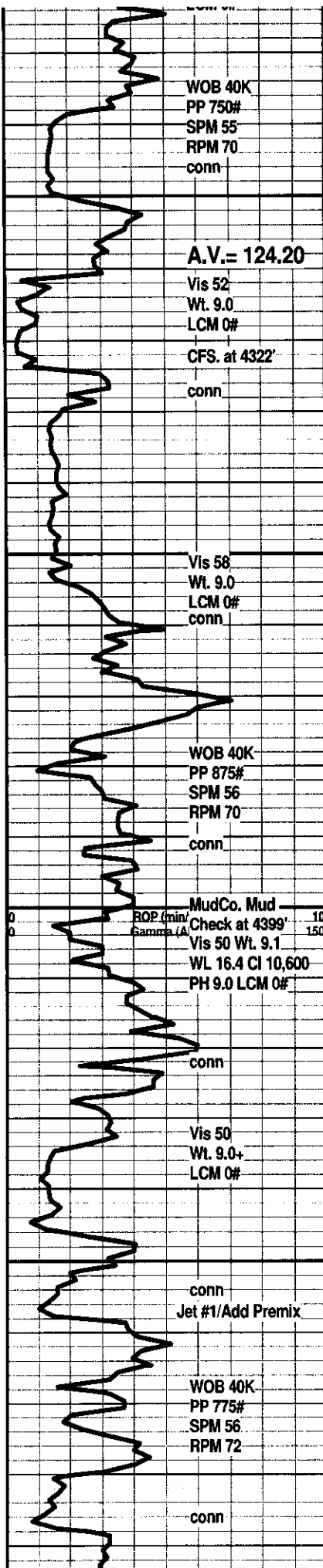
LM; tan to cream, foss, most well cem, scat off wh cht, lt yel fluor, no stn, tite

LM; tan to lt brn, buff, f to med xln, foss ip, gd interxln w/well dev. vug por, much brite yel fluor, SSFO, gas bubbles, spotted to occ even lt brn oil stn, gd odor, fair to gd cut, some barren porosity

DST #2: Lansing 'B' 4236' - 4258'

LM; lt brn, tan, v. foss ip, poor vis interpart por, abnt wh to amber cht, dull yel min fluor only, no stn or odor, ns.





LM; tan to buff, lt brn, most dense, blocky, hd, scat tan cht, ns.

LANSING 'E/F' ZONE 4288(-2025)

LM; wh, off wh, finely pelletal, interbdd med xln partly chalky lmst, fair to gd interxln/interpart por, lt yel fluor, no stn or odor, no gas kick, barren, ns.

LANSING 'G' 4308(-2045)

LM; lt to med brn, oolitic, med size molds w/v. gd oomoldic por, occ vug por, brittle, dull yel to lt yel fluor, no stn or odor, minor chalky mtx, barren, no gas kick

LM; lt gy, lt brn, dense, micritic, tite

LM; wh, off wh, buff, foss, scat small ooids and pellets, occ chalky mtx, fair interpart por, scat lt yel min fluor, no vis stn, no odor, no gas kick

LM; tan to cream, buff, f to med xln, fair interxln por, scat off wh to gy cht, dull yel fluor, ns.

LM; tan to med brn, foss ip, scat pyr, hd

LANSING/KC. 'H' 4373(-2110)

LM; lt brn to buff, tan, oolitic, small to med size molds, poor to fair oomoldic por, lt to occ med yel fluor, no stn or odor, no vis gas bubbles, ns.

LM; tan to buff, hd, micritic, scat gy/off wh cht, tite, scat pyr

SH; med gy, platy, foss ip, soft

LM; off wh, tan, cream, foss - finely pelletal w/scat small ooids, fair interpart por, dull yel min fluor, no stn or odor, no sample shows

LM; lt to med brn, hd, blocky, scat tan/amber cht, tite

K.C. 'I' ZONE 4423(-2160)

LM; off wh, tan, cream, foss - finely pelletal/oolitic, most well cem, poor interpart por, lt yel min fluor, no vis stn, no odor, no sample shows

LM; tan to buff, lt brn, foss - finely pelletal w/scat ooids, fair to occ gd interpart por, interbdd soft chalk and chalky lmst, no stn or odor, dull yel fluor, no sample shows

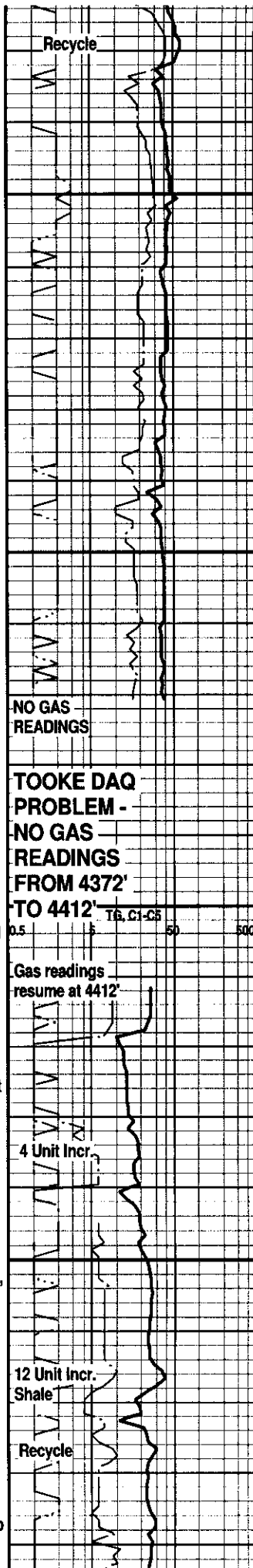
LM; off wh, tan, foss w/much soft chalk and chalky lmst, fair interpart por, med yel min fluor, no vis stn, no odor, ns.

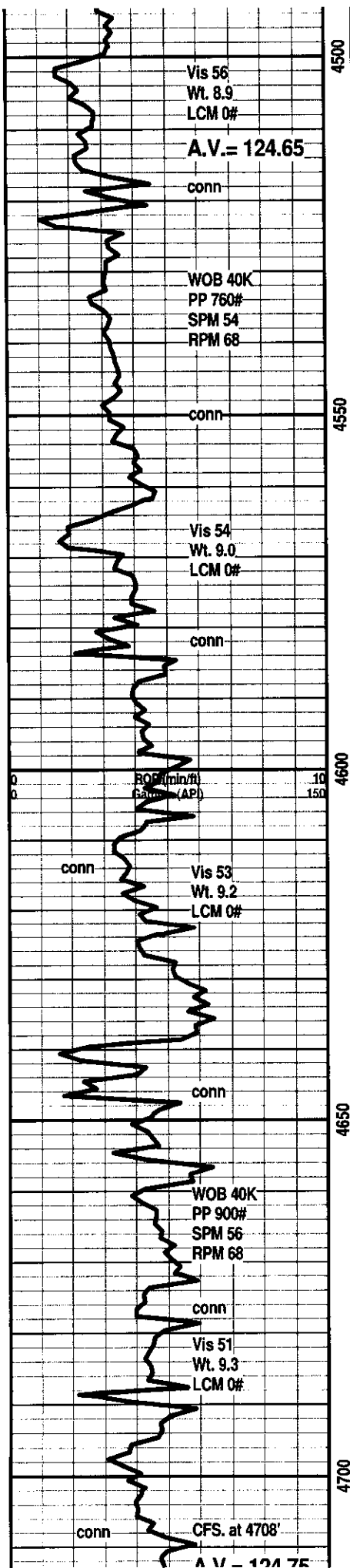
SH; blk, carb ip, platy, scat pyr

K.C. 'J' DENNIS 4468(-2205)

LM; tan to buff, lt brn, fxln, scat sucrosic text, partly dolomitic, fair interxln por, dull yel min fluor, no vis stn, no odor, no sample shows

LM; tan to lt brn, foss - finely pelletal, scat foss hash, fair interpart and small vug por, lt yel min fluor, minor chalky mtx, interbdd soft chalky lmst, no stn or odor, no gas kick, ns.





LM; off wh, tan, buff, fxln to micritic, some blocky, hd, tite

LM; off wh, f to med xln, scat cse spar calc xtals, much soft chalky mtx, fair to poor interxln por, no fluor, no stn or odor, ns.

STARK SHALE 4521(-2258)
SH; blk, carb ip, pyr

SWOPE 4528(-2265)
LM; tan to lt brn, foss ip, well cem, most blocky, dense, dull yel to no fluor, scat lt gy/off wh cht, no stn or odor, ns.

LM; tan to buff, cream, dense, micritic to litho, tite, scat off wh cht

SH; blk, gy grn, dk gy, platy

HERTHA 4560(-2297)
LM; tan to lt brn, buff, fxln, scat foss mat, fair interxln/interpart w/some p-p por, lt yel fluor, no vis stn, no odor, no gas kick

LM; tan to lt brn, fxln, scat spar calc xtals, fair interxln por ip, minor soft chalky mtx, lt yel fluor, ns.

LM; med to dk brn, hd, micritic, trc dk gy cht

BASE KANSAS CITY 4600(-2337)
SH; varic, rust red, grn, brn, flakey, silty ip.
LM; med brn, gy brn, argil, foss ip.

SH; varic, rust red, grn, foss ip, occ silty

PLEASANTON 4616(-2353)
LM; lt brn, nodular ip, partly weathered, hd

LM; off wh, tan, wh, most micritic, hd, rarely foss, lt yel min fluor, no stn, bcm argil at base

SH; dk gy, trc blk, some varic.

MARMATON 4642(-2382)
LM; tan to lt brn, foss ip, well cem, hd, blocky, rare grn argil lmst, no fluor, no vis por, ns.

SH; grn, gy grn, platy, foss ip.

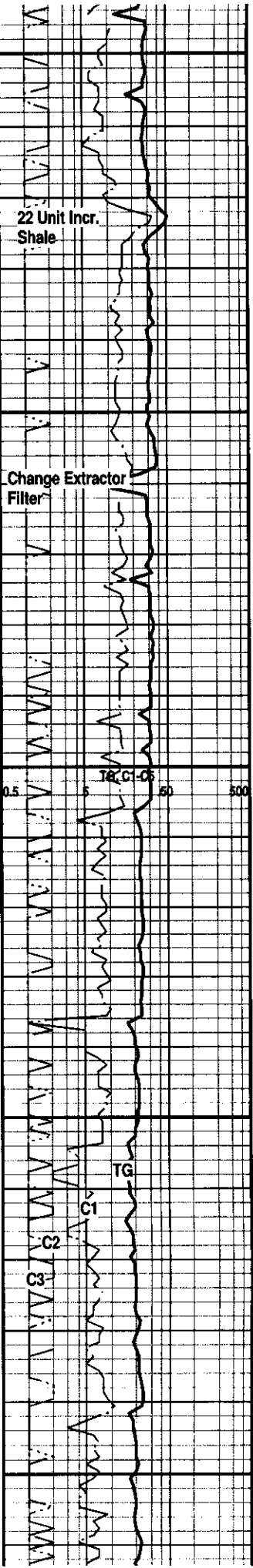
LM; off wh, tan, buff, foss ip, most well cem, occ cherty w/amber/org and brn cht, no fluor, no stn or odor, ns.

LM; lt to med brn, most dense, blocky, hd, scat off wh/amber cht, no vis por, dull to lt yel min fluor, ns.

SH; dk gy, blk, platy, soft

PAWNEE 4692(-2429)
LM; tan to buff, off wh, foss ip, poor to fair interpart por, lt yel fluor, trc finely oolitic lmst, no vis stn, no odor, no gas kick - POOR SAMPLES, some med brn dense micrite

LM; lt to med brn, hd, micritic, scat well cem foss frags,



M.V. = 124.13

MudCo. Mud
Check at 4721'
Vis 49 Wt. 9.3
WL 14.4 CI 7800
PH 10.5 LCM 0#
conn

WOB 40K
PP 775#
SPM 55
RPM 65-70

Vis 56
Wt. 9.1
LCM 2#

WOB 40K
PP 900#
SPM 56
RPM 68

ROP (min)^m
Gamma (A)conn

DST #3
Vis 54
Wt. 9.2
LCM 2#
**Miss. Chert
4770' - 4829'**

R-Rough
Drilling
CFS. at 4829'

R R R

DST #4
Vis 53 Wt. 9.05
WL 11.6 CI 8800
PH 9.0 LCM 2#
**Miss.
4829' - 4845'**

CFS. at 4845'
MudCo. Mud
Check at 4845'
Vis 53 Wt. 9.05
WL 11.6 CI 8800
PH 9.0 LCM 2#
conn

WOB 40K
PP 825#
SPM 56
RPM 73

conn

Vis 67
Wt. 9.2
LCM 2#

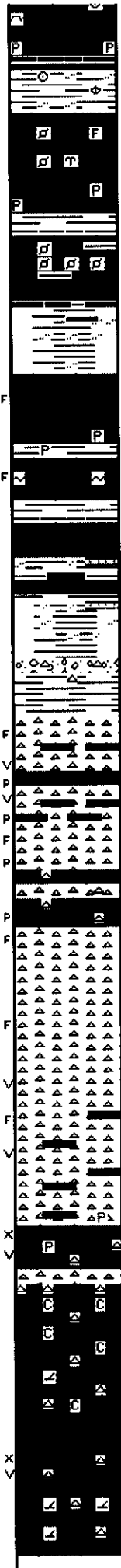
CFS. at 4930'
OTD

4750

4800

4850

4900



no fluor, ns.
SH; blk, carb, gassy ip, scat pyr, blocky

SH; grn, gy gm, red, foss ip, flakey

LM; tan to lt brn, buff, foss ip, well cem, scat spar calc xtals, med/brite yel min fluor, no vis por, no stn, no gas kick, tite

CHEROKEE SHALE 4738(-2475)
SH; blk, v. dk gy, carb, soft to brittle, scat pyr

LM; tan to med brn, gy brn, hd, foss - scat small pellets, well cem, no vis por, some argil lmst, no fluor, no stn, ns.

SH; varic, dk gy, trc blk, gm, gy, silty ip, fiss - flakey

LM; lt to med brn, blocky, micritic, hd, poss frags, dull yel min fluor, no vis stn, ns.

SH; blk, dk gy, pyr ip

LM; tan to med brn, cse xln, cse spar calc xtals, poss frags, glau ip, faint gas odor, trc gas bubbles, lt yel fluor, trc blk tar/gils

LM; lt gy, pale grn tint, blocky, micritic, no vis por, no fluor, ns.

SH; varic, gm, rust red, yel, brn, platy, occ silty to sandy, trc red sandy sh

SH; varic, some nodular weath lmst, scat wh/transl cht

MISS. UNCONFORMITY 4812(-2549)
CHT; wh, off wh, most fresh, interbdd cherty dolo, sucrosic, frags in cht w/trc edge stn, v. faint odor, dead oil only, v. dull yel fluor

CFS(60 Min): CHT, wh, pale grn, opaque, fresh and some trip, fair p-p and vug por w/fracs, interbdd sucrosic dolo w/scat lt brn live stn, gd odor, Trc. FO, spotted stn, trc gas bubbles

DST #3: Miss. Chert 4770' - 4829'
CHT; wh, off wh, pale grn, fresh and trip, spotted lt brn stn, Trc. FO, strong odor, frags w/fair p-p por, brite yel fluor, interbdd tan cherty sucrosic dolo, scat stn, some dense, occ lrg qtz xtals

DST #4: Miss. Cht/Dol. 4829' - 4845'
CHT; wh, opaque, porc, pred fresh, scat frags w/rare blk tar/gils on edges, no fluor, no stn or odor, ns.

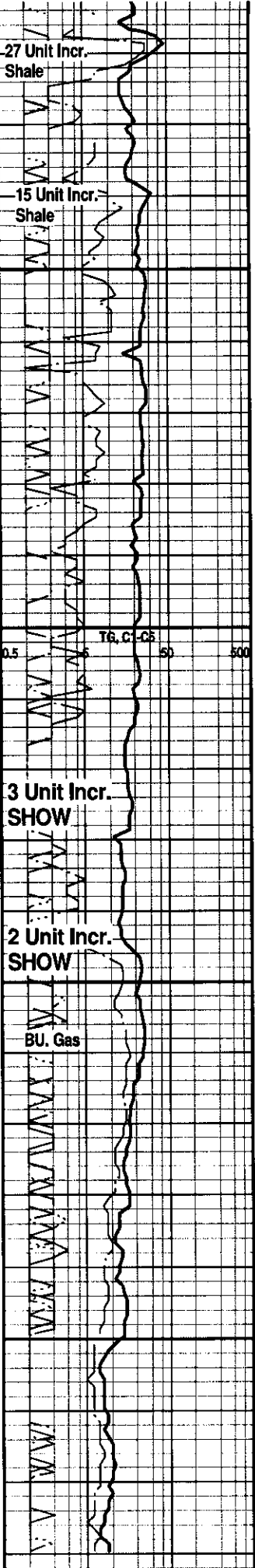
CHT; wh, off wh, rare lt gy, porc, hd, all fresh, scat vug por w/fracs, partly dolomitic, dull yel min fluor, no stn or odor, ns.

DOL; tan, buff, lt gy, sucrosic, fair to gd interxln w/vug por, med yel min fluor, no stn or odor, cherty ip, rarely pyr, ns.

LM; tan to cream, rare lt brn, hd, blocky, no vis por, interbdd chalky lmst, cherty ip, no fluor, no stn or odor, ns.

DOL; lt gy, tan, sucrosic, soft, gd interxln w/occ vug por, med yel min fluor, cherty ip, no stn or odor, ns.

LM; off wh, buff, tan, fxln, partly dolomitic, lt yel fluor, hd, blocky, no stn, ns.



RTD.

4950

00

RTD. 4930' at 6:15 AM. 7/23/12

LTD.

Halliburton DIL, NEU/DEN w/PE,
Microlog, Sonic, MIRL

NATURAL GAS ANALYSIS REPORT
GPA 2145-09

Sampled by:
Trilobite Testing, Inc.
Hays, Kansas
Scott City, Kansas
Phone: 800-728-5369
Fax: 785-625-5620

Analyzed by:
Caraway Analytical, Inc
P. O. Box 2137
Liberal, Kansas 67905
Phone: 620-482-2371
Fax: 620-626-7108

Lab Number:	20122315	Analyzed:	07/21/12
Sample From:	MILLER TRUST 1-36	Pressure:	
Producer:	STRATA EXPL INC	Temperature:	
Date:		Location:	36-26-20
Time:		County:	EDWARDS
Sampler:	GARY	State:	KANSAS
Source:	DST 1	Formation:	TORONTO

	Mole %	GPM
Helium	He: 0.484	0.000
Hydrogen	H2: 0.000	0.000
Oxygen	O2: 0.000	0.000
Nitrogen	N2: 29.539	0.000
Carbon Dioxide	CO2: 0.021	0.000
Methane	C1: 64.242	0.000
Ethane	C2: 2.359	0.885
Propane	C3: 1.496	0.561
Iso Butane	iC4: 0.383	0.117
Normal Butane	nC4: 0.561	0.178
Iso Pentane	iC5: 0.222	0.061
Normal Pentane	nC5: 0.211	0.058
Hexanes Plus	C6+: 0.482	0.111
TOTAL:		100.000 1.971
Z Fact:		0.9999
SP.GR.:		0.7354
BTU (SAT):		803.0 @ 14.73 psia
BTU (DRY):		817.2 @ 14.73 psia
OCTANE RATING:		88.7

COMMENTS:

0.000

NATURAL GAS ANALYSIS REPORT

GPA 2145-09

Sampled by:
 Trilobite Testing, Inc.
 Hays, Kansas
 Scott City, Kansas
 Phone: 800-728-5369
 Fax: 785-625-5620

Analyzed by:
 Caraway Analytical, Inc
 P. O. Box 2137
 Liberal, Kansas 67905
 Phone: 620-482-2371
 Fax: 620-626-7108

Lab Number:	20122316	Analyzed:	07/21/12
Sample From:	MILLER TRUST 1-36	Pressure:	
Producer:	STRATA EXPL INC	Temperature:	
Date:		Location:	36-26-20
Time:		County:	EDWARDS
Sampler:	GARY	State:	KANSAS
Source:	DST 2	Formation:	LANS A

		Mole %	GPM
Helium	He:	0.461	0.000
Hydrogen	H2:	0.000	0.000
Oxygen	O2:	0.000	0.000
Nitrogen	N2:	25.584	0.000
Carbon Dioxide	CO2:	0.106	0.000
Methane	C1:	67.140	0.000
Ethane	C2:	3.019	1.132
Propane	C3:	1.775	0.665
Iso Butane	iC4:	0.367	0.112
Normal Butane	nC4:	0.671	0.213
Iso Pentane	iC5:	0.221	0.061
Normal Pentane	nC5:	0.231	0.064
Hexanes Plus	C6+:	0.425	0.098

TOTAL: 100.000 2.346
 Z Fact: 0.9999
 SP.GR.: 0.7261
 BTU (SAT): 852.0 @ 14.73 psia
 BTU (DRY): 867.0 @ 14.73 psia
 OCTANE RATING: 93.5

COMMENTS:

0.000



PAGE 1 of 1	CUST NO 1004072	INVOICE DATE 07/10/2012
INVOICE NUMBER 1718 - 90948406		

PAID
7-27-12
FNB SA CK# 8759

Pratt (620) 672-1201
 B STRATA EXPLORATION
 I PO Box: 401
 L FAIRFIELD
 L IL US 62837
 T
 o ATTN: ACCOUNTS PAYABLE

J LEASE NAME Miller Trust 1-36
 O LOCATION
 B COUNTY Edwards
 S STATE KS
 I JOB DESCRIPTION Cement-New Well Casing/Pi
 T
 E JOB CONTACT

JOB #	EQUIPMENT #	PURCHASE ORDER NO.	TERMS	DUE DATE
40484913	27463		Net - 30 days	08/09/2012

For Service Dates: 07/07/2012 to 07/07/2012	QTY	U of M	UNIT PRICE	INVOICE AMOUNT	
				LEV	P/P
0040484913			18001		
171806512A Cement-New Well Casing/Pi 07/07/2012 Cement 8 5/8" Surface					
A Serv Lite	175.00	EA	9.75		1,706.13 T
Common Cement	175.00	EA	12.00		2,099.87 T
Celloflake	88.00	EA	2.77		244.18 T
Calcium Chloride	789.00	EA	0.79		621.29 T
"Top Rubber Cmt Plug, 8 5/8" ""	1.00	EA	168.74		168.74
"8 5/8" Guide Shoe (Red)"	1.00	EA	412.47		412.47
"Baffle Plate Alum., 8 5/8" (Blue)"	1.00	EA	127.49		127.49
"8 5/8" Basket (Blue)"	1.00	EA	236.23		236.23
"Unit Mileage Chg (PU, cars one way)"	45.00	MI	3.19		143.43
Heavy Equipment Mileage	90.00	MI	5.25		472.47
"Proppant & Bulk Del. Chgs., per ton mil	716.00	EA	1.20		859.14
Depth Charge; 501'-1000'	1.00	EA	899.94		899.94
Blending & Mixing Service Charge	350.00	BAG	1.05		367.47
Plug Container Util. Chg.	1.00	EA	187.49		187.49
"Service Supervisor, first 8 hrs on loc.	1.00	EA	131.24		131.24

LEASE	7/13	MILLER TRUST	315	7/17
DES		CEMENT SURFACE PIPE		7/24
DRL	X	CCM	LOE	G/L
			717.30	9018.60

PLEASE REMIT TO:	SEND OTHER CORRESPONDENCE TO:	SUB TOTAL	8,677.58
BASIC ENERGY SERVICES, LP	BASIC ENERGY SERVICES, LP	TAX	341.02
PO BOX 841903	PO BOX 10460	INVOICE TOTAL	9,018.60
DALLAS, TX 75284-1903	MIDLAND, TX 79702		



TREATMENT REPORT

Customer <i>H RATA Exploration</i>	Lease No.	Date <i>7-7-12</i>
Lease <i>Miller Trust</i>	Well # <i>1-36</i>	
Field Order # <i>6517</i>	Station <i>PIN 7 R</i>	Casing <i>8 7/8</i>
	Depth <i>523</i>	County <i>Edwards</i>
Type Job <i>C/W 8 7/8 Surface</i>	Formation	Legal Description <i>36-26-20</i>

PIPE DATA		PERFORATING DATA		FLUID USED		TREATMENT RESUME		
Casing Size	Tubing Size	Shots/Ft		Acid	RATE	PRESS	ISIP	
<i>8 7/8</i>								
Depth <i>523</i>	Depth	From	To	Pre Pad	Max		5 Min.	
Volume <i>30</i>	Volume	From	To	Pad	Min		10 Min.	
Max Press <i>300</i>	Max Press	From	To	Frac	Avg		15 Min.	
Well Connection <i>P.C.</i>	Annulus Vol.	From	To		HHP Used		Annulus Pressure	
Plug Depth <i>480</i>	Packer Depth	From	To	Flush	Gas Volume		Total Load	

Customer Representative	Station Manager <i>DAVE SCOTT</i>	Treater <i>Robert Johnson</i>						
Service Units <i>37900</i>	<i>27463</i>	<i>19959</i>	<i>19860</i>					
Driver Names <i>Sullivan</i>	<i>Melton</i>	<i>Lawrence</i>						

Time	Casing Pressure	Tubing Pressure	Bbls. Pumped	Rate	Service Log
<i>3:30</i>	<i>Ann.</i>				<i>on the soft ground</i>
					<i>Run 12 str 8 7/8 24 str.</i>
<i>6:00</i>					<i>Casing on bottom</i>
<i>6:10</i>					<i>Hook 14' circ</i>
<i>6:20</i>			<i>3</i>	<i>4</i>	<i>8' SpHcol.</i>
			<i>51</i>	<i>5</i>	<i>mix cont 175 sk A. Seal Lido @ 13.229</i>
			<i>37</i>		<i>mix cont 175 sk Comon 2 1/2% cc 114 ct.</i>
					<i>shut down cont mix</i>
					<i>Relieve Plug</i>
				<i>4</i>	<i>8' Dead</i>
<i>7:00</i>	<i>360</i>		<i>30</i>		<i>plug down</i>
					<i>circ 15 bar cont to Pit</i>
					<i>Job Complete</i>
					<i>Thank you</i>



PAGE	CUST NO	INVOICE DATE
1 of 1	1004072	07/18/2012
INVOICE NUMBER		
1718 - 90956363		

PAID
7-27-12
FAB SACK# 8757

Pratt (620) 672-1201
 B STRATA EXPLORATION
 I PO Box: 401
 L FAIRFIELD
 L IL US 62837
 T
 O ATTN: ACCOUNTS PAYABLE

J LEASE NAME Miller Trust 1-36
 O
 B LOCATION
 COUNTY Edwards
 S STATE KS
 I JOB DESCRIPTION Cement-New Well Casing/Pi
 E JOB CONTACT

JOB #	EQUIPMENT #	PURCHASE ORDER NO.	TERMS	DUE DATE
40488639	19843		Net - 30 days	08/17/2012

For Service Dates: 07/17/2012 to 07/17/2012	QTY	U of M	UNIT PRICE	INVOICE AMOUNT	
				LEV	P/P
0040488639		18001			
171806294A Cement-New Well Casing/Pi 07/17/2012					
Cement 5 1/2" Longstring					
50/50 POZ	300.00	EA	8.80		2,640.00 T
Celloflake	75.00	EA	2.96		222.00 T
Gypsum	1,260.00	EA	0.60		756.00 T
FLA-322	126.00	EA	6.00		756.00 T
Gilsonite	1,800.00	EA	0.54		964.80 T
Mud Flush	1,000.00	EA	0.69		688.00 T
KCL Postassium Chloride	680.00	EA	1.20		816.00 T
Claymax KCL Substitute	5.00	EA	28.00		140.00 T
"Latch Down Plug & Baffle, 5 1/2" (Blue)	1.00	EA	320.00		320.00
"Auto Fill Float Shoe 5 1/2" (Blue)"	1.00	EA	288.00		288.00
"Turbolizer, 5 1/2" (Blue)"	12.00	EA	88.00		1,056.00
"5 1/2" Basket (Blue)"	2.00	EA	232.00		464.00
"Cement Scratchers Cable Type, 5 1/2" "	6.00	EA	60.00		360.00
"Unit Mileage Chg (PU, cars one way)"	30.00	MI	3.40		102.00
Heavy Equipment Mileage	60.00	MI	5.60		336.00
"Proppant & Bulk Del. Chgs , per ton mil	378.00	EA	1.28		483.84
Depth Charge; 4001'-5000'	1.00	EA	2,016.00		2,016.00
Blending & Mixing Service Charge	300.00	BAG	1.12		336.00
Plug Container Util. Chg.	1.00	EA	200.00		200.00
"Service Supervisor, first 8 hrs on loc.	1.00	EA	140.00		140.00

LEASE	7/23	MILLER TRST 1-36	LEV	5	P/P	7/23
DES		CEMENT LONGSTRING			A/P	7/24
DRL	COM	LOE	G/L		D/D	
	X		73.551/3	594		

PLEASE REMIT TO:	SEND OTHER CORRESPONDENCE TO:	SUB TOTAL	13,084.64
BASIC ENERGY SERVICES, LP	BASIC ENERGY SERVICES, LP	TAX	509.74
PO BOX 841903	PO BOX 10460	INVOICE TOTAL	13,594.38
DALLAS, TX 75284-1903	MIDLAND, TX 79702		



10244 NE Hwy. 61
P.O. Box 8613
Pratt, Kansas 67124
Phone 620-672-1201

FIELD SERVICE TICKET
1718 06294 A

DATE _____ TICKET NO. _____

DATE OF JOB 7-17-2012	DISTRICT Pratt, Ks.	NEW WELL <input checked="" type="checkbox"/>	OLD WELL <input type="checkbox"/>	PROD <input type="checkbox"/>	INJ <input type="checkbox"/>	WDW <input type="checkbox"/>	CUSTOMER ORDER NO.:		
CUSTOMER STRATA EXPLORATION		LEASE MILLER TRUST		WELL NO. 1-36					
ADDRESS		COUNTY EDWARDS		STATE Ks.					
CITY		STATE		SERVICE CREW LESLEY, MARQUEZ, PRYCE					
AUTHORIZED BY		JOB TYPE: CNW-5 1/2" I.S.							
EQUIPMENT#	HRS	EQUIPMENT#	HRS	EQUIPMENT#	HRS	TRUCK CALLED	DATE	AM	TIME
37586	6.5						7-17-12	PM	8:00
19829-19843	6.5					ARRIVED AT JOB		AM	11:00
19826-19918	6.5					START OPERATION		AM	11:30
						FINISH OPERATION		AM	5:00
						RELEASED		AM	5:30
						MILES FROM STATION TO WELL			30

CONTRACT CONDITIONS: (This contract must be signed before the job is commenced or merchandise is delivered).

The undersigned is authorized to execute this contract as an agent of the customer. As such, the undersigned agrees and acknowledges that this contract for services, materials, products, and/or supplies includes all of and only those terms and conditions appearing on the front and back of this document. No additional or substitute terms and/or conditions shall become a part of this contract without the written consent of an officer of Basic Energy Services LP.

SIGNED: _____
(WELL OWNER, OPERATOR, CONTRACTOR OR AGENT)

ITEM/PRICE REF. NO.	MATERIAL, EQUIPMENT AND SERVICES USED	UNIT	QUANTITY	UNIT PRICE	\$ AMOUNT
CP 104	50/50 P02	SK	250		2,750.00
CP 104	50/50 P02	SK	50		550.00
CC 102	CELL-FLAKE	lb	75		277.50
CC 113	GYPSUM	lb	1260		945.00
CC 129	FLA-322	lb	126		945.00
CC 201	GILSONITE	lb	1800		1,206.00
C 700	KCL - POTASSIUM CHLORIDE	lb	6800		1,020.00
CF 107	CATCH DOWN PLUG & BAFFLE 5 1/2"	EA	1		400.00
CF 1251	AUTO FILL FILT 5 1/2"	EA	1		360.00
CF 11051	TURBOLIZER, 5 1/2"	EA	12		1,320.00
CF 1901	BASKET 5 1/2"	EA	2		580.00
CF 2001	CABLE TUBE - CNT. SCRATCHERS, 5 1/2"	EA	6		450.00
C 704	CLAYMAX	GAL	5		175.00
CC 151	AIR FLUSH	GAL	1000		860.00
E 100	PICKUP MILEAGE	MI	30		127.50
E 101	HEAVY EQUIPMENT MILEAGE	MI	60		420.00
E 113	BULK DELIVERY CHARGE	TM	378		604.20
CE 205	DEPTH CHARGE, 400' - 500'	HR	1.4		2,520.00
CE 210	BLENDED SERVICE CHRG.	SK	300		420.00
CE 504	PLUG CONTAINER CHRG.	JOB	1	350.00	350.00
500	CHEMICAL / ACID DATA:	EA	1	175.00	175.00
	SERVICE SUPERVISOR				
				SUB TOTAL	13,084.00
				%TAX ON \$	
				%TAX ON \$	
				TOTAL	

SERVICE REPRESENTATIVE: *Lesley* THE ABOVE MATERIAL AND SERVICE ORDERED BY CUSTOMER AND RECEIVED BY: *[Signature]*
(WELL OWNER OPERATOR CONTRACTOR OR AGENT)

FIELD SERVICE ORDER NO. _____



Energy services, L.P.

TREATMENT REPORT

Lease No.	Lease	Date
STRATA EXP.	MILLER TRUST	7-17-2012
Well #	Field Order #	Station
1-36	060294	
Casing	Depth	County
5 1/2"		EDWARDS
State	Type Job	Formation
KS	CNW-5 1/2" L.S.	4920'
Legal Description	36 26 20	

PIPE DATA		PERFORATING DATA		FLUID USED		TREATMENT RESUME		
Casing Size	Tubing Size	Shots/Ft		Acid		RATE	PRESS	ISIP
5 1/2" x 15.5"				250 SKS. 50/50 POZ				
Depth	Depth	From	To	Pre Pad		Max		5 Min.
4920.07				@ 1.35 CU FT				
Volume	Volume	From	To	Pad		Min		10 Min.
117 BBL						55 = 21.28'		
Max Press	Max Press	From	To	Frac		Avg		15 Min.
1500								
Well Connection	Annulus Vol.	From	To			HHP Used		Annulus Pressure
P.C.				2% KCL H ₂ O				
Plug Depth	Packer Depth	From	To	Flush		Gas Volume		Total Load
4848.79				116.5 BBL				

Customer Representative	Station Manager	Treater
C. BYRNE	D. SLATT	K. LESLEY
Service Units	Driver Names	
37586, 19889, 19843, 19826, 19918	LESLEY, MAHONEY, PAGE	

Time	Casing Pressure	Tubing Pressure	Bbls. Pumped	Rate	Service Log
11:00 AM					ON LOCATION - SAFETY MEETING
					RUN 120 JTS. 5 1/2" x 15.5" CSG.
					TURBO. - 1, 2, 3, 5, 9, 13, 17, 18, 20, 21, 23, 27
					BASK. - 6, 14
					SCRATCHERS - 2 ON #2, 4 ON #3
12:30 PM					CIRC. 1/2 WAY IN HOLE
2:00 PM					CSG. ON BOTTOM
2:45 PM					HOOKUP TO CSG. / BREAK CIRC. W/ RIG
3:45 PM	300		24	6	MUD FLUSH
3:50 PM	250		5	6	H ₂ O SPACER
3:55 PM	150		60	6	MIX 250 SKS. 50/50 POZ @ 14.0 TPG
4:05 PM					CLEAR PUMP & LINE - DROP L.D. PLUG
4:10 PM	0		0	7	START DISPLACEMENT - 2% KCL H ₂ O
4:22 PM	250		80	6	LIFT PRESSURE
4:26 PM	700		100	5	SLOW RATE
4:30 PM	1500		116.5	4	PLUG DOWN - HELD
					CIRC. THRU bps
4:45 PM			164	2	PLUG R.H. & N.H.
					JOB COMPLETE.
					THANKS -
					KEVIN LESLEY