



KANSAS CORPORATION COMMISSION 1100470
OIL & GAS CONSERVATION DIVISION

Form ACO-1
June 2009
Form Must Be Typed
Form must be Signed
All blanks must be Filled

WELL COMPLETION FORM
WELL HISTORY - DESCRIPTION OF WELL & LEASE

OPERATOR: License # 33036
Name: Strata Exploration, Inc.
Address 1: PO BOX 401
Address 2: _____
City: FAIRFIELD State: IL Zip: 62837 + 0401
Contact Person: John
Phone: (618) 842-2610
CONTRACTOR: License # 5142
Name: Sterling Drilling Company
Wellsite Geologist: Jon Christensen

Purchaser: _____
Designate Type of Completion:
 New Well Re-Entry Workover
 Oil WSW SWD SLOW
 Gas D&A ENHR SIGW
 OG GSW Temp. Abd.
 CM (Coal Bed Methane)
 Cathodic Other (Core, Expl., etc.): _____

If Workover/Re-entry: Old Well Info as follows:
Operator: _____
Well Name: _____
Original Comp. Date: _____ Original Total Depth: _____
 Deepening Re-perf. Conv. to ENHR Conv. to SWD
 Conv. to GSW
 Plug Back: _____ Plug Back Total Depth _____
 Commingled Permit #: _____
 Dual Completion Permit #: _____
 SWD Permit #: _____
 ENHR Permit #: _____
 GSW Permit #: _____
07/12/2012 07/23/2012 09/05/2012
Spud Date or Date Reached TD Completion Date or
Recompletion Date Recompletion Date

API No. 15 - 15-097-21730-00-00
Spot Description: _____
SW NW NE SW Sec. 6 Twp. 27 S. R. 19 East West
2104 Feet from North / South Line of Section
1400 Feet from East / West Line of Section
Footages Calculated from Nearest Outside Section Corner:
 NE NW SE SW
County: Kiowa
Lease Name: Rose Well #: 1-6
Field Name: _____
Producing Formation: Lansing
Elevation: Ground: 2260 Kelly Bushing: 2271
Total Depth: 4930 Plug Back Total Depth: _____
Amount of Surface Pipe Set and Cemented at: 519 Feet
Multiple Stage Cementing Collar Used? Yes No
If yes, show depth set: _____ Feet
If Alternate II completion, cement circulated from: _____
feet depth to: _____ w/ _____ sx cmt.

Drilling Fluid Management Plan
(Data must be collected from the Reserve Pit)
Chloride content: 13400 ppm Fluid volume: 1000 bbls
Dewatering method used: Hauled to Disposal
Location of fluid disposal if hauled offsite: _____
Operator Name: Roberts Recources
Lease Name: MARY License #: 32781
Quarter NW Sec. 16 Twp. 29 S. R. 18 East West
County: Kiowa Permit #: D28396

AFFIDAVIT

I am the affiant and I hereby certify that all requirements of the statutes, rules and regulations promulgated to regulate the oil and gas industry have been fully complied with and the statements herein are complete and correct to the best of my knowledge.

Submitted Electronically

KCC Office Use ONLY

Letter of Confidentiality Received
Date: 11/13/2012

Confidential Release Date: _____

Wireline Log Received

Geologist Report Received

UIC Distribution

ALT I II III Approved by: NAOMI JAMES Date: 11/14/2012



1100470

Operator Name: Strata Exploration, Inc. Lease Name: Rose Well #: 1-6
 Sec. 6 Twp 27 S. R. 19 East West County: Kiowa

INSTRUCTIONS: Show important tops and base of formations penetrated. Detail all cores. Report all final copies of drill stems tests giving interval tested, time tool open and closed, flowing and shut-in pressures, whether shut-in pressure reached static level, hydrostatic pressures, bottom hole temperature, fluid recovery, and flow rates if gas to surface test, along with final chart(s). Attach extra sheet if more space is needed. Attach complete copy of all Electric Wire-line Logs surveyed. Attach final geological well site report.

Drill Stem Tests Taken Yes No
 (Attach Additional Sheets)

Samples Sent to Geological Survey Yes No

Cores Taken Yes No

Electric Log Run Yes No

Electric Log Submitted Electronically Yes No
 (If no, Submit Copy)

Log Formation (Top), Depth and Datum Sample
 Name Top Datum
****See Geo Report**

List All E. Logs Run:

Microlog
 Halliburton Induction
 Comp Density Neutron

CASING RECORD <input checked="" type="checkbox"/> New <input type="checkbox"/> Used							
Report all strings set-conductor, surface, intermediate, production, etc.							
Purpose of String	Size Hole Drilled	Size Casing Set (in O.D.)	Weight Lbs. / Ft.	Setting Depth	Type of Cement	# Sacks Used	Type and Percent Additives
Surface	12.25	8.625	23	519	See cement ticket	350	See cement ticket
Longstring	7.875	5.5	15.5	4928	See cement ticket	250	See cement ticket

ADDITIONAL CEMENTING / SQUEEZE RECORD				
Purpose:	Depth Top Bottom	Type of Cement	# Sacks Used	Type and Percent Additives
Perforate				
Protect Casing	-			
Plug Back TD				
Plug Off Zone	-			

Shots Per Foot	PERFORATION RECORD - Bridge Plugs Set/Type Specify Footage of Each Interval Perforated	Acid, Fracture, Shot, Cement Squeeze Record (Amount and Kind of Material Used)	Depth
3	Miss Chert	500gal 15% MCA/FE 1500 gal 15% Hcl, Ne/Fe	4232-4242
3	Lansing "A"	500gal 15%MCA/Fe	4201-4209

TUBING RECORD:	Size: 2 3/8"	Set At: 4106	Packer At: 4232	Liner Run: <input type="checkbox"/> Yes <input type="checkbox"/> No
Date of First, Resumed Production, SWD or ENHR.	Producing Method: <input type="checkbox"/> Flowing <input type="checkbox"/> Pumping <input type="checkbox"/> Gas Lift <input type="checkbox"/> Other (Explain) _____			
Estimated Production Per 24 Hours	Oil Bbls.	Gas Mcf	Water Bbls.	Gas-Oil Ratio Gravity

DISPOSITION OF GAS: <input type="checkbox"/> Vented <input checked="" type="checkbox"/> Sold <input type="checkbox"/> Used on Lease (If vented, Submit ACO-18.)	METHOD OF COMPLETION: <input type="checkbox"/> Open Hole <input checked="" type="checkbox"/> Perf. <input type="checkbox"/> Dually Comp. (Submit ACO-5) <input type="checkbox"/> Other (Specify) _____	PRODUCTION INTERVAL: 4201-4209
---	--	--

LITHOLOGY STRIP LOG

WellSight Systems

Scale 1:240 (5"=100') Imperial

Well Name: Rose #1-6
Location: 2104' FSL & 1400' FWL, Sec. 6-T27S-R19W, Kiowa Co., KS.
Licence Number: 15-047-21611-0000 Region: Wildcat
Spud Date: 7/12/2012 Drilling Completed: 7/23/2012
Surface Coordinates: 2104' FSL & 1400' FWL, Sec. 6-T27S-R19W

Bottom Hole Same as Above
Coordinates:
Ground Elevation (ft): 2252' K.B. Elevation (ft): 2263'
Logged Interval (ft): 3800' To: 4930' Total Depth (ft): 4930'
Formation: Mississippian at Total Depth
Type of Drilling Fluid: Freshwater/Gel to 3121'; Chemical Gel 3121' to 4930'

Printed by MUD.LOG from WellSight Systems 1-800-447-1534 www.WellSight.com

OPERATOR

Company: Strata Exploration, Inc.
Address: P.O. Box 401
Fairfield, IL. 62837-0401

GEOLOGIST

Name: Jon D. Christensen
Company: Consulting Petroleum Geologist
Address: 9002 W. Silver Hollow St.
Wichita, KS. 67205-8856

Cores

None Taken

DSTs

DST #1(Lansing 'A') 4199' - 4215'(Corrected Depths to LOG) Test Times 15"-45"-45"-90" IFP Strong Blow Gas to Surface in 4 Min., FFP Strong Blow Gas to Surface throughout Gauged Max. 468 MCFG; REC: 125' WM(20%W, 80%M), 125' MW(80%W, 20%M) CI 109,000 Mud 6600; IFP 70-96#, ISIP 1432#, FFP 70-100#, FSIP 1397#, IHP 2020#, FHP 2013#, BHT 115 Deg F.

DST #2(Lansing 'B') 4230' - 4252'(Corrected Depths to LOG) Test Times 15"-45"-30"-60" IFP Strong Blow BOB/25 Sec., 2" Blowback on ISI, FFP Strong Blow BOB/4 Min., no Gas to surface, 10" Blowback on FSI; REC: 1100' Gas in Pipe, 155' GM&WCO(12%G, 45%O, 19%W, 24%M), 235' SOCMW(1%O, 93%W, 6%M) CI 86,000, Mud 4600; IFP 51-82#, ISIP 1410#, FFP 107-178#, FSIP 1391#, IHP 2022#, FHP 1998#, BHT 120 Deg. F.

DST #3(Miss. Chert/Dolo.) 4764' - 4823'(Corrected Depths to LOG) Test Times 15"-45"-15"-45" IFP Very Weak 0.5" Blow, FFP No Blow, no Blowback on SI's; REC: 5' Hvy. Drlg Mud, no shows; IFP 22-24#, ISIP 68#, FFP 25-25#, FSIP 39#, IHP 2322#, FHP 2264#, BHT 117 Deg. F.

DST #4(Miss. Chert/Dolo.) 4823' - 4839'(Corrected Depths to LOG) Test Times 15"-45"-30"-60" IFP Weak Blow built to 1.5", FFP Weak Blow built to 1.5", no Blowback on SI's; REC: 5' CO, 60' OCWM(24%O, 16%W, 60%M), 65' SOCMW(2%O, 50%W, 48%M), CI 83,000, Mud 8800; IFP 19-40#, ISIP 1520#, FFP 46-78#, FSIP 1528#, IHP 2348#, FHP 2331#, BHT 123 Deg F.

Comments

7/12/12 MIRU Sterling Drilling Co. Rig #2, Spud at 8:00 PM; 7/13/12 TD. 523' - Wiper Trip prior to setting Surface Casing; 7/14/12 TD. 523' - WOC; 7/15/12 Drilling at 1780'; 7/16/12 Drilling at 2833'; 7/17/12 Drilling at 3532'; 7/18/12 Drilling at 4150'; 7/19/12 TD. 4221' - TIH after DST #1; 7/20/12 Drilling at 4365'; 7/21/12 TD. 4708' - CFS; 7/22/12 TD. 4829' - TIH after DST #3; 7/23/12 RTD. 4930' - CCH for Logs; 7/24/12 RTD. 4930'/LTD. 4922' - LDDP for setting 5 1/2" Production Casing.

Set new 8 5/8"(23#) Surface Casing at 519' w/350 sx. cement(Basic Energy Services). Cement to Cellar. PD. 12:45 PM. 7/13/12. Cement fell 30' - cement through 1" with 75 additional sx. Completed 2:00 AM. 7/14/12.

Set new 5 1/2"(15.5#) Production Casing at 4922' w/250 sx. "Strata Blend" cement(Basic Energy Services). PD. 4:15 PM. 7/24/12.

Surveys: 0.25 Deg. at 523'(Surface Casing); 0.50 Deg. at 4221'(DST #1); 1.50 Deg. at 4829'(DST #3).

Pipe Strap at 4221'(DST #1): Strap 1.62' Short to the Board, no correction made to the Board.

After review of the Halliburton Logs, DST data, and positive indications of commercial amounts of hydrocarbons, the operator elected to set new 5 1/2" Production Casing for completion in the Lansing 'A' and 'B' zones.

LOG TOPS: Chase 2490(-227), Stotler Lmst. 3427(-1164), Howard 3628(-1365), Heebner Shale 4054(-1791), Toronto 4074(-1811), Brown Lmst. 4188(-1925), Lansing 'A' 4196(-1933), Lansing 'B' 4222(-1959), Lansing/KC. 'H' 4368(-2105), Stark Shale 4514(-2251), Base Kansas City 4595(-2332), Marmaton 4635(-2372), Pawnee 4688(-2425), Cherokee Shale 4729(-2466), Miss. Unconformity 4806(-2543), Miss. Osage Chert 4836(-2573), Basal Miss. Lmst. 4887(-2624).

NOTE: This log was shifted upward by 6' for correlation purposes with the Halliburton LOGS.

ROCK TYPES

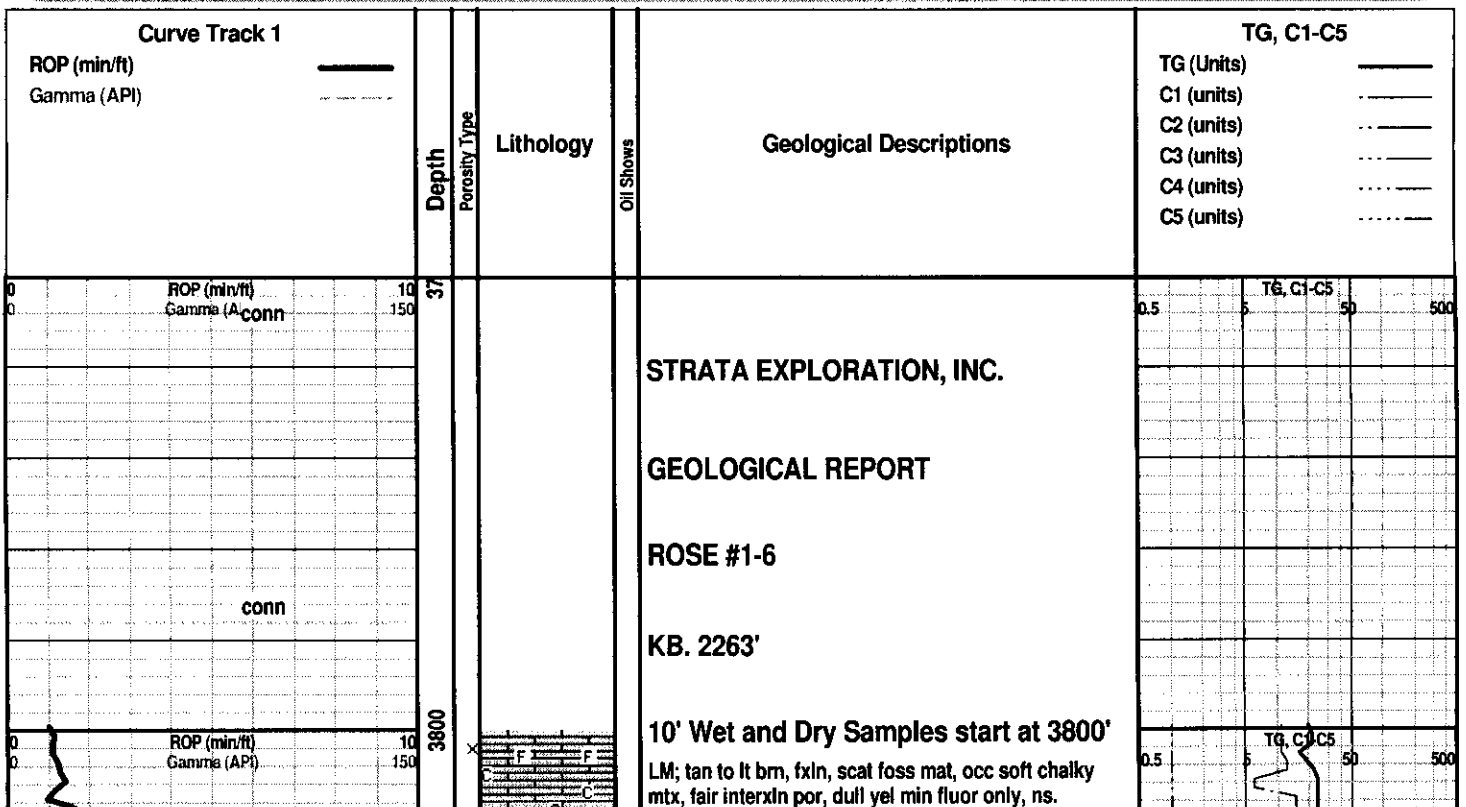
Anhy	Clyst	Gyp	Mrlst	Shgy
Bent	Coal	Igne	Salt	Sltst
Brec	Congl	Lmst	Shale	Ss
Cht	Dol	Meta	Shcol	Till

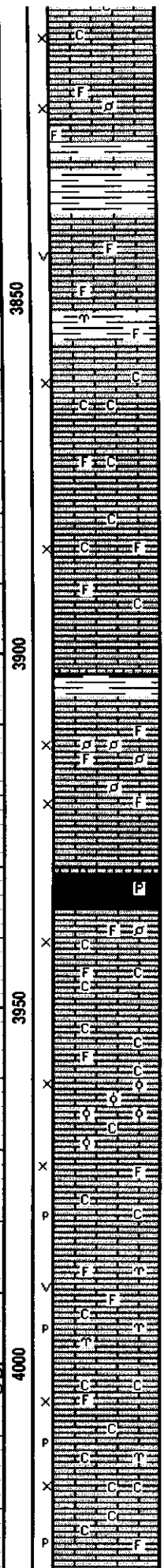
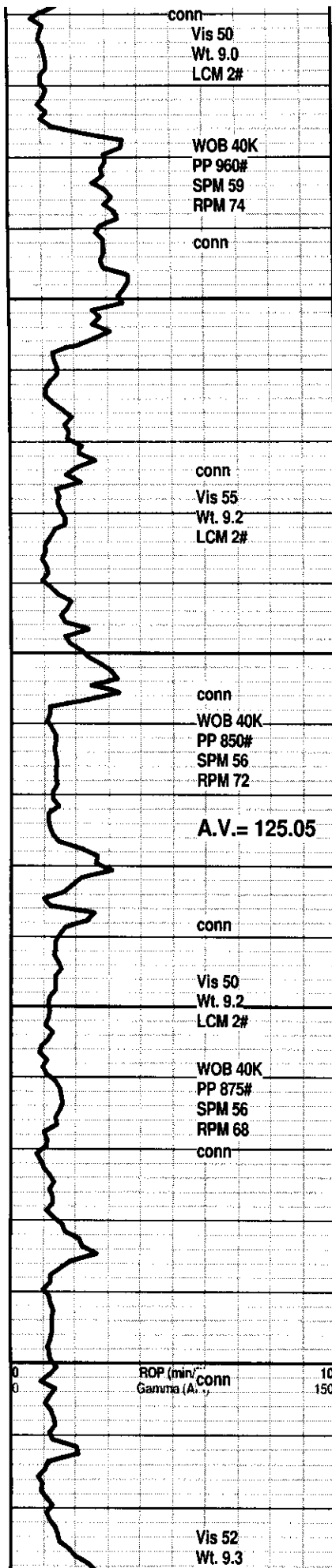
ACCESSORIES

MINERAL	Gyp	FOSSIL	Ostra	Sltstrg
Anhy	Hvymn	Algae	Pelec	Ssstrg
Arggrn	Kaol	Amph	Pellet	TEXTURE
Arg	Marl	Belm	Pisolite	Boundst
Bent	Minxl	Bioclst	Plant	Chalky
Bit	Nodule	Brach	Strom	Cryxln
Brecfrag	Phos	Bryozoa	STRINGER	Earthy
Calc	Pyr	Cephal	Anhy	Finexln
Carb	Salt	Coral	Arg	Grainst
Chtdk	Sandy	Crin	Bent	Lithogr
Chtlt	Silt	Echin	Coal	Microxln
Dol	Sil	Fish	Dol	Mudst
Feldspar	Sulphur	Foram	Gyp	Packst
Ferrpel	Tuff	Fossil	Ls	Wackest
Ferr		Gastro	Mrst	
Glauc		Oolite		

OTHER SYMBOLS

POROSITY	Vuggy	ROUNDING	Spotted	EVENT
Earthy	SORTING	Rounded	Ques	Rft
Fenest	Well	Subrnd	Dead	Sidewall
Fracture	Moderate	Subang	INTERVAL	
Inter	Poor	Angular	Core	
Moldic		OIL SHOW	Dst	
Organic		Even		
Pinpoint				





LM; lt brn, tan, foss ip, scat med xln w/fair interxln por, occ wh cht, no fluor, ns.

SH; med to dk gy, platy to flakey

LM; tan, off wh, buff, foss ip, most well cem, interbdd foss lmst w/fair vug por, lt to med yel min fluor, no stn or odor, ns.

SH; gm, gy grn, platy, occ foss

LM; tan to cream, lt brn, f to med xln, fair to occ gd interxln por, minor soft chalky mtx, lt yel min fluor, no stn or odor, ns.

LM; tan to cream, off wh, f to med xln, fair to gd interxln por, scat foss mat, interbdd soft chalky lmst, lt yel min fluor, no stn or odor, ns.

POOR SAMPLES: 75 - 80% SHALE, REDUCE PUMP PRESSURE TO 55 TO 56 SPM = 850#

SH; med to dk gy, red, gm, slough shales

LM; tan to cream, lt brn, fxln w/scat foss mat. occ finely pelletal, fair interpart por, lt yel min fluor, ns.

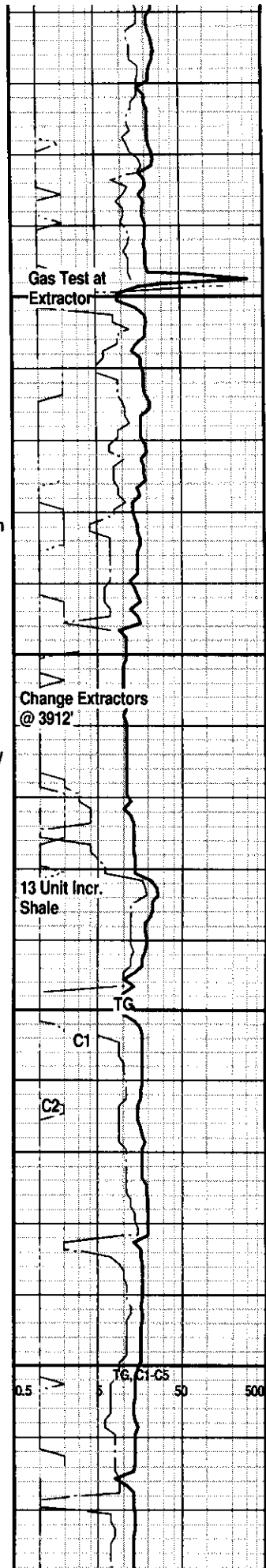
SH; blk, carb ip, platy, trc pyr

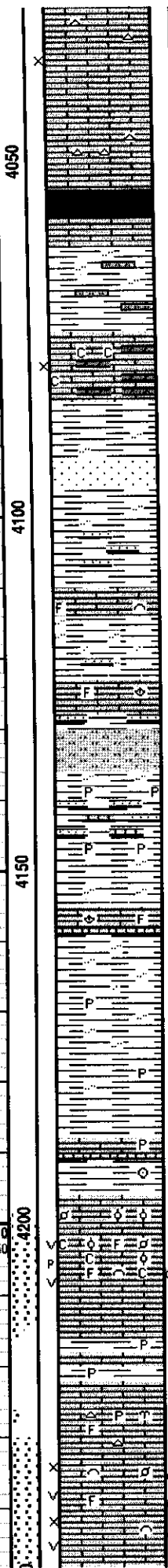
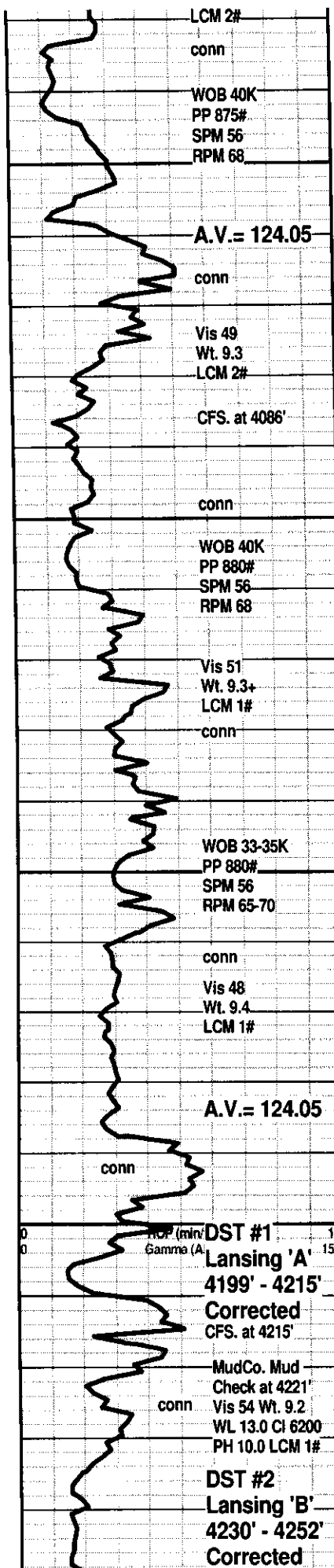
LM; wh, lt gy, off wh, f to med xln, some gran text, fair to gd interxln por, scat foss mat, lt to med yel fluor, some very chalky - soft, ns.

LM; off wh, tan, scat foss mat - finely pelletal ip, trc oolitic lmst, poor to fair interpart por, lt yel min fluor, scat chalky lmst, no stn or odor, ns.

LM; off wh, tan, foss ip, scat good vug and p-p por, lt yel min fluor, no stn or odor, no gas kick, barren, ns.

LM; tan to buff, off wh, f to med xln, fair to gd interxln w/occ p-p por, interbdd tan to lt brn hd micrite, decr. chalk and chalky mtx, lt yel fluor, occ tan to off wh cht, ns.





LM; med brn, dense, scat tan/off wh cht, no vis por, tite

HEEBNER SHALE 4054(-1791)
SH; blk, carb ip, platy, trc gas bubb.
LM; med to dk brn, v. hd, blocky, tite
SH; gm, gy grn, silty w/some interbdd sitst

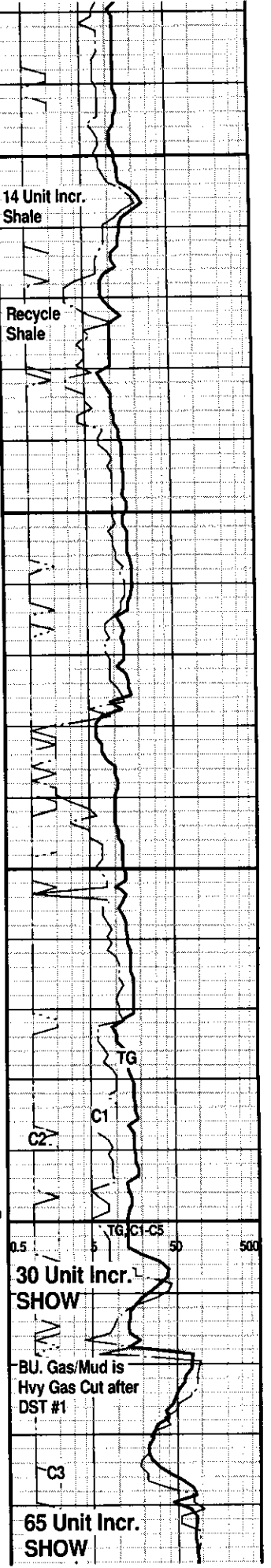
TORONTO 4074(-1811)
LM; wh, off wh, fxln to sucrosic text, partly dolomitic, fair interxln por, lt yel fluor, occ soft chalky mxb, no vis stn, no odor, no vis gas bubbles, no gas kick, barren

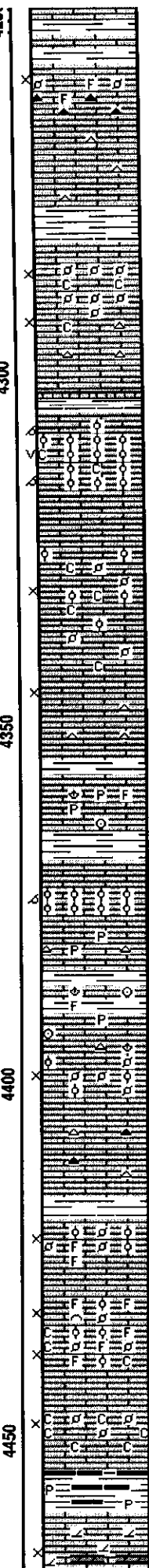
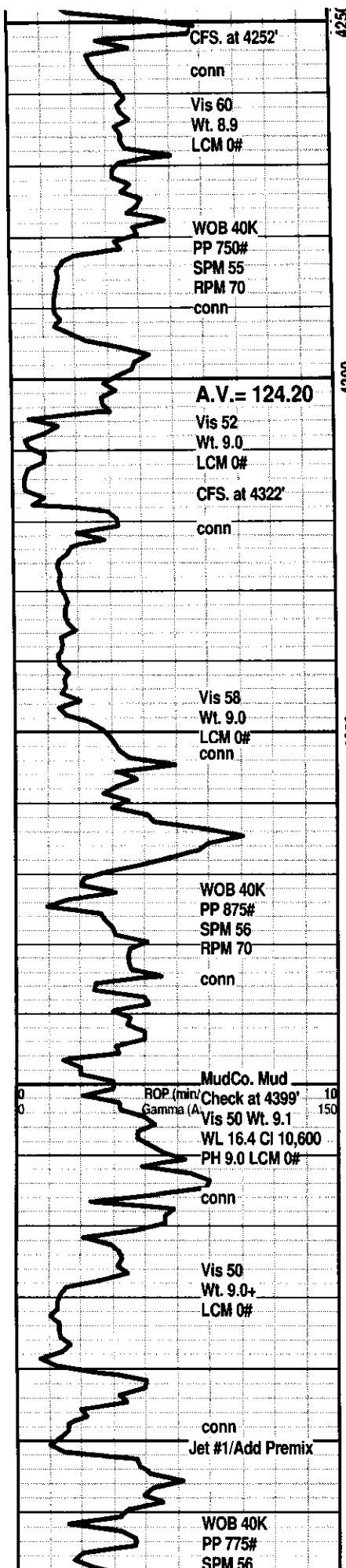
DOUGLAS SHALE 4084(-1821)
SH; lt gy, soft, silty ip, interbdd vf to fgr qtz ss, tite mica ss, platy
SH; lt to med gy, grn, silty w/rare vf gr qtz ss strngs.
LM; lt to med brn, foss, hd, blocky, no vis por, lt yel min fluor, ns.
SH; lt gy, gy grn, silty to rarely sandy, occ mica
LM; lt brn, occ med brn, foss, dense, blocky, scat hd vf gr qtz ss, tite
SLTST; lt gy, sandy ip, firm
SH; lt gy, sandy to occ lmy, v. firm, platy, scat dissem pyr
LM; med brn, foss, hd, lt yel min fluor, tite
SH; lt to med gy, occ silty, firm, rarely pyr, very flakey, sloughing badly

BROWN LMST. 4188(-1925)
LM; med to occ dk brn, micritic, hd, trc pyr

LANSING 'A' 4196(-1933)
LM; wh, off wh, foss ip, rare small oolites, most w/fair to occ gd p-p and small vug por, med yel fluor, faint sweet gas odor, gas bubbles, chalky mxb, occ cse spar calc xtals, trc med brn oil stn, trc. lt clr FO. droplets, pred. gas show
DST #1: Lansing 'A' 4199' - 4215'
Corrected Depths to LOG
SH; med gy, grn, platy, occ pyr

LANSING 'B' 4222(-1959)
LM; tan to cream, foss, most well cem, scat off wh cht, lt yel fluor, no stn, tite
LM; tan to lt brn, buff, f to med xln, foss ip, gd interxln w/well dev. vug por, much brite yel fluor, SSFO, gas bubbles, spotted to occ even lt brn oil stn, gd odor, fair to gd cut, some barren porosity





DST #2: Lansing 'B' 4230' - 4252'
Corrected Depths to LOG

LM; lt brn, tan, v. foss ip, poor vis interpart por, abnt wh to amber cht, dull yel min fluor only, no stn or odor, ns.

LM; tan to buff, lt brn, most dense, blocky, hd, scat tan cht, ns.

SH; med gy, gy grn, firm

LANSING 'E/F' ZONE 4281(-2018)

LM; wh, off wh, finely pelletal, interbdd med xln partly chalky lmst, fair to gd interxln/interpart por, lt yel fluor, no stn or odor, no gas kick, barren, ns.

LANSING 'G' PORO. 4305(-2042)

LM; lt to med brn, oolitic, med size molds w/v. gd oomoldic por, occ vug por, brittle, dull yel to lt yel fluor, no stn or odor, minor chalky mtx, barren, no gas kick

LM; lt gy, lt brn, dense, micritic, tite

LM; wh, off wh, buff, foss, scat small ooids and pellets, occ chalky mtx, fair interpart por, scat lt yel min fluor, no vis stn, no odor, no gas kick

LM; tan to cream, buff, f to med xln, fair interxln por, scat off wh to gy cht, dull yel fluor, ns.

LM; tan to med brn, foss ip, scat pyr, hd

LANSING/KC. 'H' 4368(-2105)

LM; lt brn to buff, tan, oolitic, small to med size molds, poor to fair oomoldic por, lt to occ med yel fluor, no stn or odor, no vis gas bubbles, ns.

LM; tan to buff, hd, micritic, scat gy/off wh cht, tite, scat pyr

SH; med gy, platy, foss ip, soft

LM; off wh, tan, cream, foss - finely pelletal w/scat small ooids, fair interpart por, dull yel min fluor, no stn or odor, no sample shows

LM; lt to med brn, hd, blocky, scat tan/amber cht, tite

K.C. 'I' ZONE 4419(-2156)

LM; off wh, tan, cream, foss - finely pelletal/oolitic, most well cem, poor interpart por, lt yel min fluor, no vis stn, no odor, no sample shows

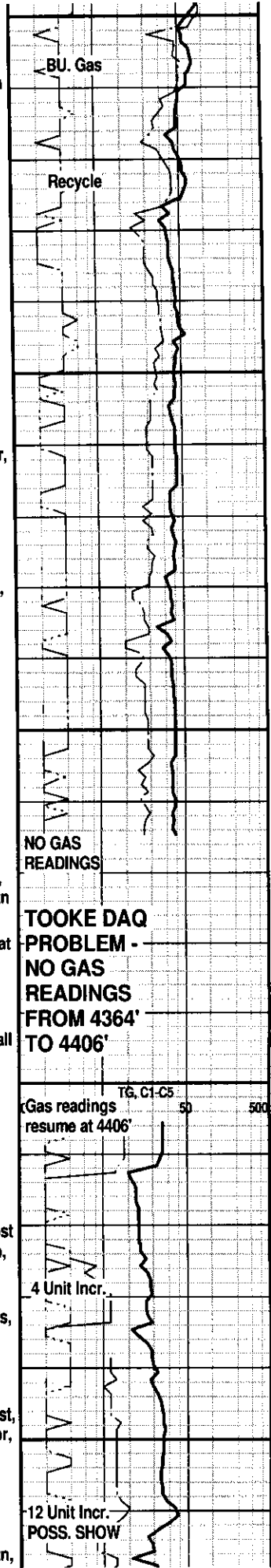
LM; tan to buff, lt brn, foss - finely pelletal w/scat ooids, fair to occ gd interpart por, interbdd soft chalk and chalky lmst, no stn or odor, dull yel fluor, no sample shows

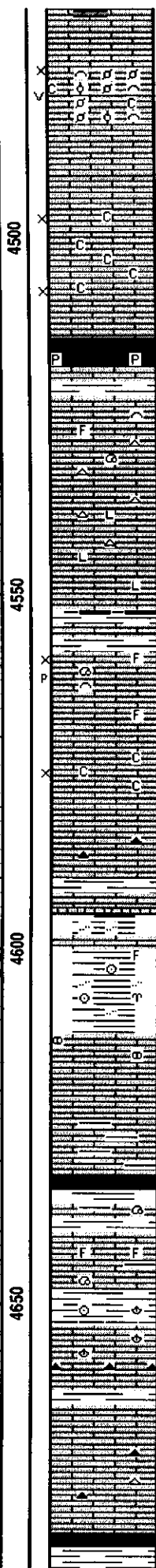
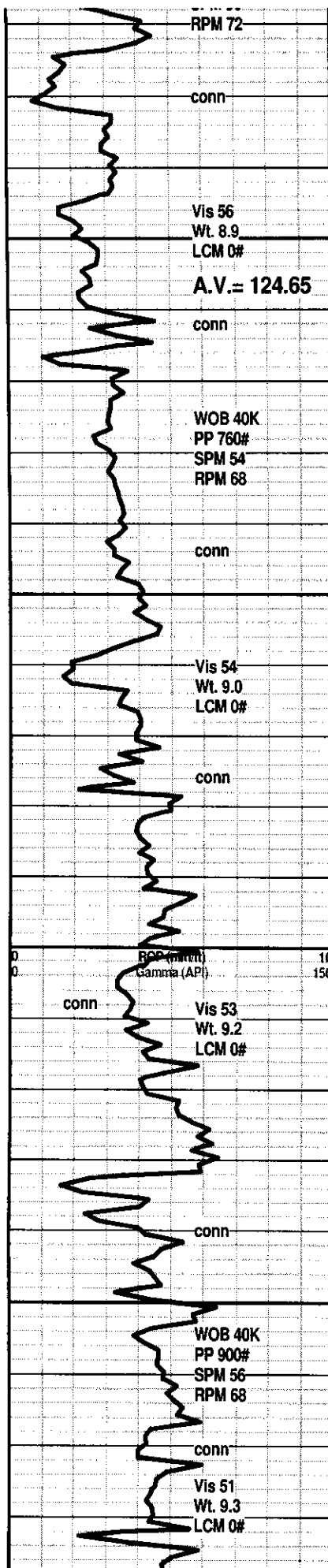
LM; off wh, tan, foss w/much soft chalk and chalky lmst, fair interpart por, med yel min fluor, no vis stn, no odor, ns.

SH; dk gy, blk, carb ip, platy, scat pyr

K.C. 'J' DENNIS 4460(-2197)

LM; tan to buff, lt brn, fxln, scat sucrosic text, partly dolomitic, fair interxln por, dull yel min fluor, no vis stn,





no odor, no sample shows

LM; tan to lt brn, foss - finely pelletal, scat foss hash, fair interpart and small vug por, lt yel min fluor, minor chalky mtx, interbdd soft chalky lmst, no stn or odor, no gas kick, ns.

LM; off wh, tan, buff, fxln to micritic, some blocky, hd, tite

LM; off wh, f to med xln, scat cse spar calc xtals, much soft chalky mtx, fair to poor interxln por, no fluor, no stn or odor, ns.

STARK SHALE 4514(-2251)
SH; blk, carb ip, pyr

SWOPE 4522(-2259)
LM; tan to lt brn, foss ip, well cem, most blocky, dense, dull yel to no fluor, scat lt gy/off wh cht, no stn or odor, ns.

LM; tan to buff, cream, dense, micritic to litho, tite, scat off wh cht

SH; blk, gy grn, dk gy, platy

HERTHA 4558(-2295)
LM; tan to lt brn, buff, fxln, scat foss mat, fair interxln/interpart w/some p-p por, lt yel fluor, no vis stn, no odor, no gas kick

LM; tan to lt brn, fxln, scat spar calc xtals, fair interxln por ip, minor soft chalky mtx, lt yel fluor, ns.

LM; med to dk brn, hd, micritic, trc dk gy cht

BASE KANSAS CITY 4595(-2332)
SH; varic, rust red, grn, brn, flakey, silty ip.

SH; varic, rust red, grn, foss ip, occ silty

PLEASANTON 4612(-2349)
LM; lt brn, nodular ip, partly weathered, hd

LM; off wh, tan, wh, most micritic, hd, rarely foss, lt yel min fluor, no stn, bcm argil at base

SH; dk gy, trc blk, some varic.

MARMATON 4635(-2372)
LM; tan to lt brn, foss ip, well cem, hd, blocky, rare grn argil lmst, no fluor, no vis por, ns.

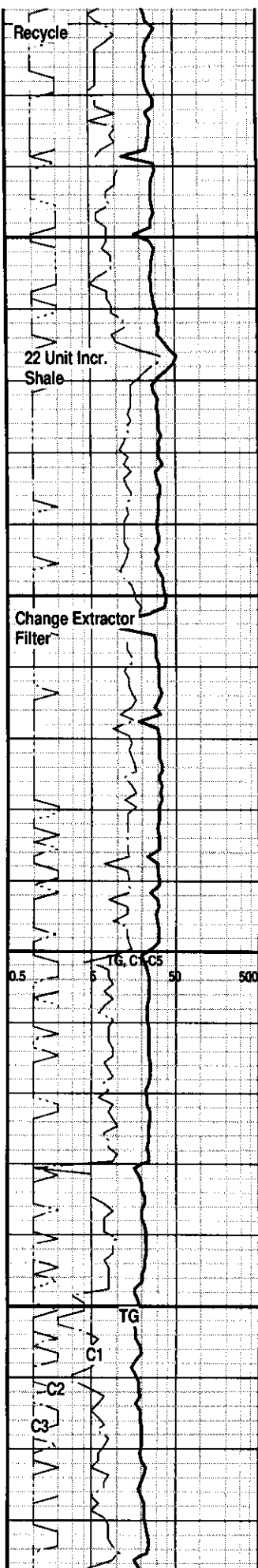
SH; grn, gy grn, platy, foss ip.

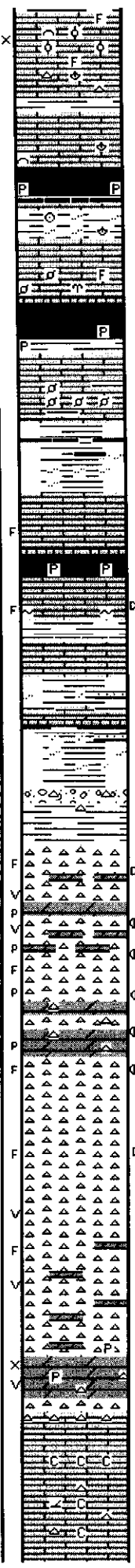
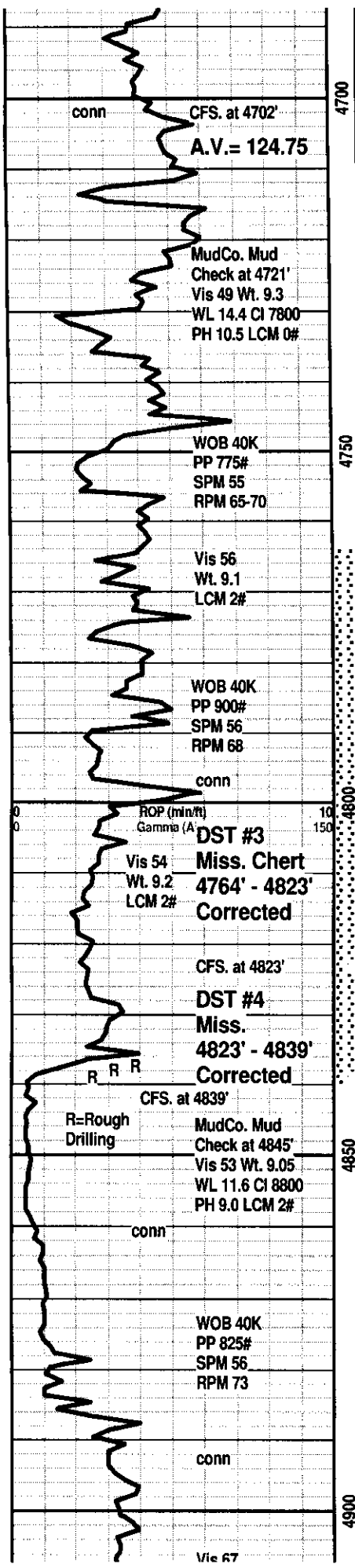
LM; off wh, tan, buff, foss ip, most well cem, occ cherty w/amber/org and brn cht, no fluor, no stn or odor, ns.

LM; lt to med brn, most dense, blocky, hd, scat off wh/amber cht, no vis por, dull to lt yel min fluor, ns.

SH; dk gy, blk, platy, soft

PAWNEE 4688(-2425)





LM; tan to buff, off wh, foss ip, poor to fair interpart por, lt yel fluor, trc finely oolitic lmst, no vis stn, no odor, no gas kick - POOR SAMPLES, some med brn dense micrite

LM; lt to med brn, hd, micritic, scat well cem foss frags, no fluor, ns.

SH; blk, carb, gassy ip, scat pyr, blocky

SH; gm, gy grn, red, foss ip, flakey

LM; tan to lt brn, buff, foss ip, well cem, scat spar calc xtals, med/brite yel min fluor, no vis por, no stn, no gas kick, tite

CHEROKEE SHALE 4729(-2466)

SH; blk, v. dk gy, carb, soft to brittle, scat pyr

LM; tan to med brn, gy brn, hd, foss - scat small pellets, well cem, no vis por, some argil lmst, no fluor, no stn, ns.

SH; varic, dk gy, trc blk, gm, gy, silty ip, fiss - flakey

LM; lt to med brn, blocky, micritic, hd, poss frags, dull yel min fluor, no vis stn, ns.

SH; blk, dk gy, pyr ip

LM; tan to med brn, cse xin, cse spar calc xtals, poss frags, glau ip, faint gas odor, trc gas bubbles, lt yel fluor, trc blk tar/gils

LM; lt gy, pale grn tint, blocky, micritic, no vis por, no fluor, ns.

SH; varic, gm, rust red, yel, brn, platy, occ silty to sandy, trc red sandy sh

SH; varic, some nodular weath lmst, scat wh/transl cht

MISS. UNCONFORMITY 4806(-2543)

CHT; wh, off wh, most fresh, interbdd cherty dolo, sucrosic, frags in cht w/trc edge stn, v. faint odor, dead oil only, v. dull yel fluor

CFS(60 Min): CHT, wh, pale grn, opaque, fresh and some trip, fair p-p and vug por w/fracs, interbdd sucrosic dolo w/scat lt brn live stn, gd odor, Trc. FO, spotted stn, trc gas bubbles

DST #3: Miss. Chert 4764' - 4823' Corrected

CFS. at 4823'

DST #4

Miss. 4823' - 4839' Corrected

CFS. at 4839'

R R R

R=Rough Drilling

MudCo. Mud Check at 4845'

Vis 53 Wt. 9.05 WL 11.6 CI 8800 PH 9.0 LCM 2#

conn

WOB 40K PP 825# SPM 56 RPM 73

conn

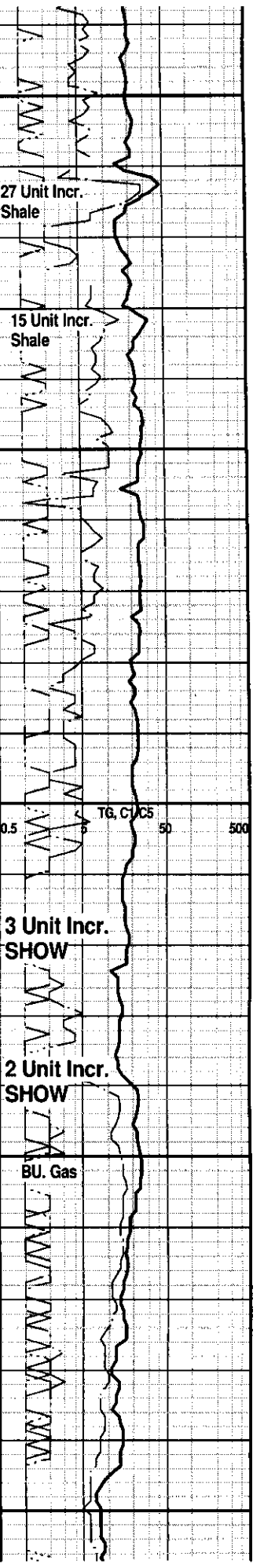
Vis 67

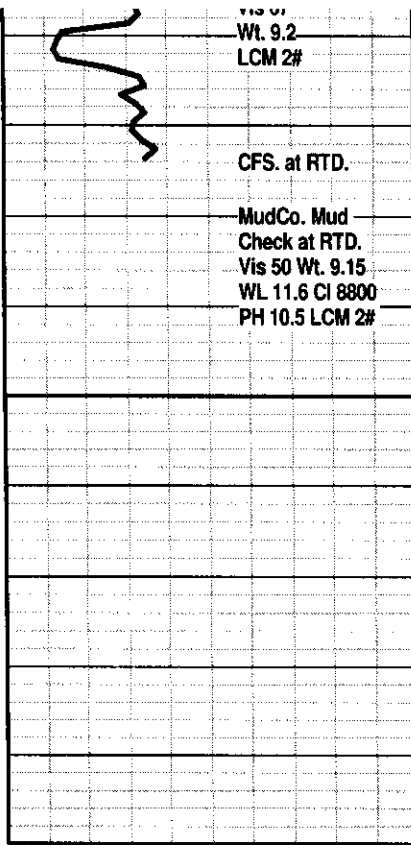
CHT; wh, off wh, rare lt gy, porc, hd, all fresh, scat vug por w/fracs, partly dolomitic, dull yel min fluor, no stn or odor, ns.

DOL; tan, buff, lt gy, sucrosic, fair to gd interxn w/vug por, med yel min fluor, no stn or odor, cherty ip, rarely pyr, ns.

BASAL MISS. LMST 4887(-2624)

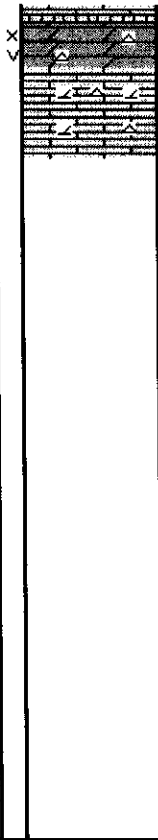
LM; tan to cream, rare lt brn, hd, blocky, no vis por, interbdd chalky lmst, cherty ip, no fluor, no stn or odor, ns.





4950

00



DOL; lt gy, tan, sucrosic, soft, gd interxln w/occ vug por, med yel min fluor, cherty ip, no stn or odor, ns.

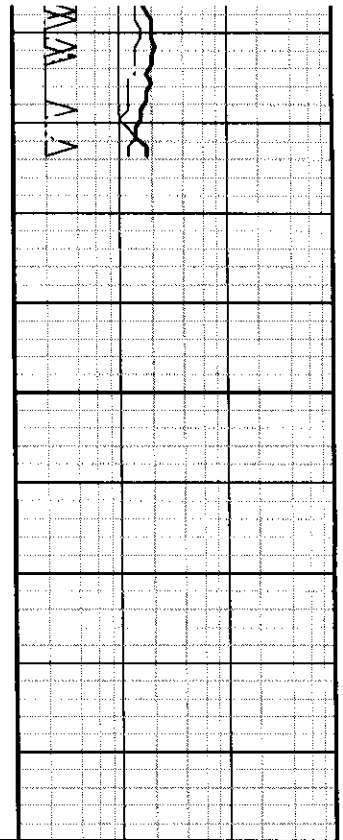
LM; off wh, buff, tan, fxln, partly dolomitic, lt yel fluor, hd, blocky, no stn, ns.

RTD. 4930' at 6:15 AM. 7/23/12

LTD. 4922'

Halliburton DIL, NEU/DEN w/PE,
Microlog, Sonic, MIRL

NOTE: This log was shifted upward by 6' for correlation purposes with the Halliburton LOGS.



NATURAL GAS ANALYSIS REPORT
GPA 2145-09

Sampled by:
Trilobite Testing, Inc.
Hays, Kansas
Scott City, Kansas
Phone: 800-728-5369
Fax: 785-625-5620

Analyzed by:
Caraway Analytical, Inc
P. O. Box 2137
Liberal, Kansas 67905
Phone: 620-482-2371
Fax: 620-626-7108

Lab Number: 20122402
Sample From: ROSE 1-6
Producer: STRATA EXPL INC
Date:
Time:
Sampler: GARY
Source: DST 1

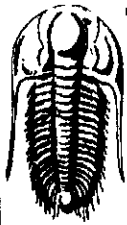
Analyzed: 07/28/12
Pressure:
Temperature:
Location: 6-27-19
County: KIOWA
State: KANSAS
Formation: LANS A

	Mole %	GPM
Helium	He: 0.454	0.000
Hydrogen	H2: 0.000	0.000
Oxygen	O2: 0.000	0.000
Nitrogen	N2: 25.759	0.000
Carbon Dioxide	CO2: 0.103	0.000
Methane	C1: 67.154	0.000
Ethane	C2: 3.033	1.137
Propane	C3: 1.735	0.650
Iso Butane	iC4: 0.364	0.112
Normal Butane	nC4: 0.628	0.200
Iso Pentane	iC5: 0.214	0.059
Normal Pentane	nC5: 0.191	0.053
Hexanes Plus	C6+: 0.365	0.084

TOTAL: 100.000 2.294
Z Fact: 0.9999
SP.GR.: 0.7233
BTU (SAT): 844.9 @ 14.73 psia
BTU (DRY): 859.8 @ 14.73 psia
OCTANE RATING: 93.4

COMMENTS:

0.000



TRILOBITE TESTING, INC.

DRILL STEM TEST REPORT

Strata Expl. Inc.

6-27s-19w Kiowa Ks.

P.O.Box 401
Fairfield Il. 62837

Rose#1-6

Job Ticket: 47583

DST#: 2

ATTN: Jon Christensen

Test Start: 2012.07.19 @ 14:09:05

GENERAL INFORMATION:

Formation: **Lans. B**

Deviated: No Whipstock: ft (KB)

Time Tool Opened: 16:39:50

Time Test Ended: 22:03:05

Test Type: Conventional Bottom Hole (Reset)

Tester: Gary Pevoteaux

Unit No: 56

Interval: **4236.00 ft (KB) To 4258.00 ft (KB) (TVD)**

Total Depth: 4258.00 ft (KB) (TVD)

Hole Diameter: 7.88 inches Hole Condition: Fair

Reference Elevations: 2263.00 ft (KB)

2252.00 ft (CF)

KB to GR/CF: 11.00 ft

Serial #: **8352**

Outside

Press@RunDepth: 178.35 psig @ 4237.00 ft (KB)

Start Date: 2012.07.19

End Date:

2012.07.19

Start Time: 14:09:10

End Time:

22:03:04

Capacity: 8000.00 psig

Last Calib.: 2012.07.19

Time On Btm: 2012.07.19 @ 16:37:05

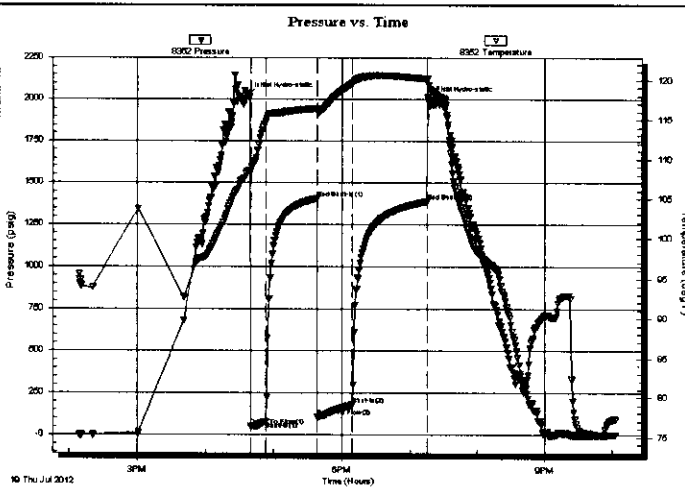
Time Off Btm: 2012.07.19 @ 19:16:35

TEST COMMENT: IF: Strong blow . B.O.B. in 25 secs.

IS: Weak blow . 1/2 - 2".

FF: Strong blow . B.O.B. in 4 mins.

FS: Fair blow . 2 - 10".



PRESSURE SUMMARY

Time (Min.)	Pressure (psig)	Temp (deg F)	Annotation
0	2021.72	108.50	Initial Hydro-static
3	50.51	108.39	Open To Flow (1)
16	81.67	114.79	Shut-In(1)
61	1409.88	116.43	End Shut-In(1)
62	107.05	116.10	Open To Flow (2)
93	178.35	119.53	Shut-In(2)
158	1391.15	120.15	End Shut-In(2)
160	1997.85	119.41	Final Hydro-static

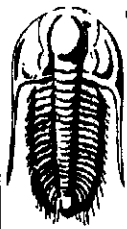
Recovery

Length (ft)	Description	Volume (bbl)
235.00	SOCMW 1%o 6% m 93%w	1.32
0.00	Rw .075 ohms @84 deg	0.00
155.00	GM&WCO 12%g 24% m 19%w 45%o	2.17
0.00	1100 ft. of GIP	0.00

* Recovery from multiple tests

Gas Rates

	Choke (inches)	Pressure (psig)	Gas Rate (Mcf/d)



TRILOBITE TESTING, INC

DRILL STEM TEST REPORT

Strata Expl.Inc.
P.O.Box 401
Fairfield Il. 62837
ATTN: Jon Christensen

6-27s-19w Kiowa Ks.
Rose#1-6
Job Ticket: 47583 **DST#: 2**
Test Start: 2012.07.19 @ 14:09:05

GENERAL INFORMATION:

Formation: **Lans. B**
Deviated: **No** Whipstock: **ft (KB)**
Time Tool Opened: 16:39:50
Time Test Ended: 22:03:05

Test Type: Conventional Bottom Hole (Reset)
Tester: Gary Pevoteaux
Unit No: 56

Interval: **4236.00 ft (KB) To 4258.00 ft (KB) (TVD)**
Total Depth: **4258.00 ft (KB) (TVD)**
Hole Diameter: **7.88 inches**Hole Condition: Fair

Reference Elevations: **2263.00 ft (KB)**
2252.00 ft (CF)
KB to GR/CF: **11.00 ft**

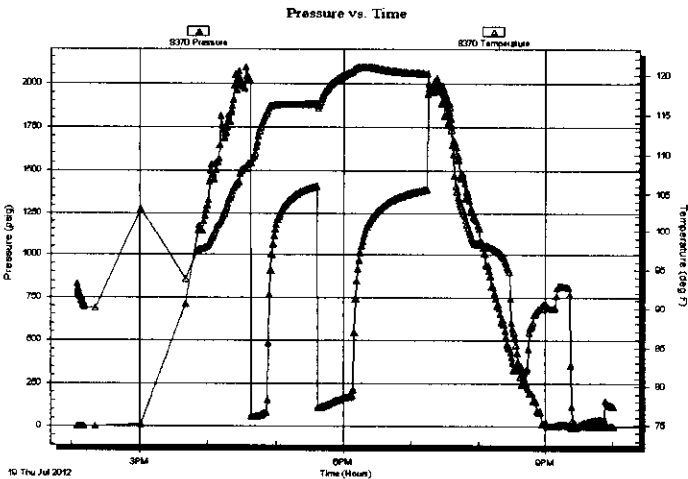
Serial #: 8370

Inside

Press@RunDepth: **psig @ 4237.00 ft (KB)**
Start Date: 2012.07.19 End Date: 2012.07.19
Start Time: 14:04:55 End Time: 22:00:49

Capacity: **8000.00 psig**
Last Calib.: **2012.07.19**
Time On Btm:
Time Off Btm:

TEST COMMENT: IF:Strong blow . B.O.B. in 25 secs.
IS:Weak blow . 1/2 - 2".
FF:Strong blow . B.O.B. in 4 mins.
FS:Fair blow . 2 - 10".



PRESSURE SUMMARY

Time (Min.)	Pressure (psig)	Temp (deg F)	Annotation

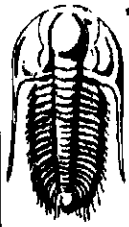
Recovery

Length (ft)	Description	Volume (bbl)
235.00	SOCMW 1%o 6%m 93%w	1.32
0.00	Rw .075 ohms@84 deg	0.00
155.00	GM&WCO 12%g 24%m 19%w 45%o	2.17
0.00	1100 ft.of GIP	0.00

Gas Rates

	Choke (inches)	Pressure (psig)	Gas Rate (Mcf/d)

* Recovery from multiple tests



**TRILOBITE
TESTING, INC.**

DRILL STEM TEST REPORT

FLUID SUMMARY

Strata Expl.Inc.

6-27s-19w Kiowa Ks.

P.O.Box 401
Fairfield Il. 62837

Rose#1-6

Job Ticket: 47583

DST#: 2

ATTN: Jon Christensen

Test Start: 2012.07.19 @ 14:09:05

Mud and Cushion Information

Mud Type: Gel Chem

Cushion Type:

Oil API:

deg API

Mud Weight: 9.00 lb/gal

Cushion Length:

ft

Water Salinity:

86000 ppm

Viscosity: 69.00 sec/qt

Cushion Volume:

bbbl

Water Loss: 8.79 in³

Gas Cushion Type:

Resistivity: 0.00 ohm.m

Gas Cushion Pressure:

psig

Salinity: 4300.00 ppm

Filter Cake: 0.20 inches

Recovery Information

Recovery Table

Length ft	Description	Volume bbl
235.00	SOCMW 1%o 6%m 93%w	1.320
0.00	Rw .075 ohms@84 deg	0.000
155.00	GM&WCO 12%g 24%m 19%w 45%o	2.174
0.00	1100 ft.of GIP	0.000

Total Length: 390.00 ft

Total Volume: 3.494 bbl

Num Fluid Samples: 0

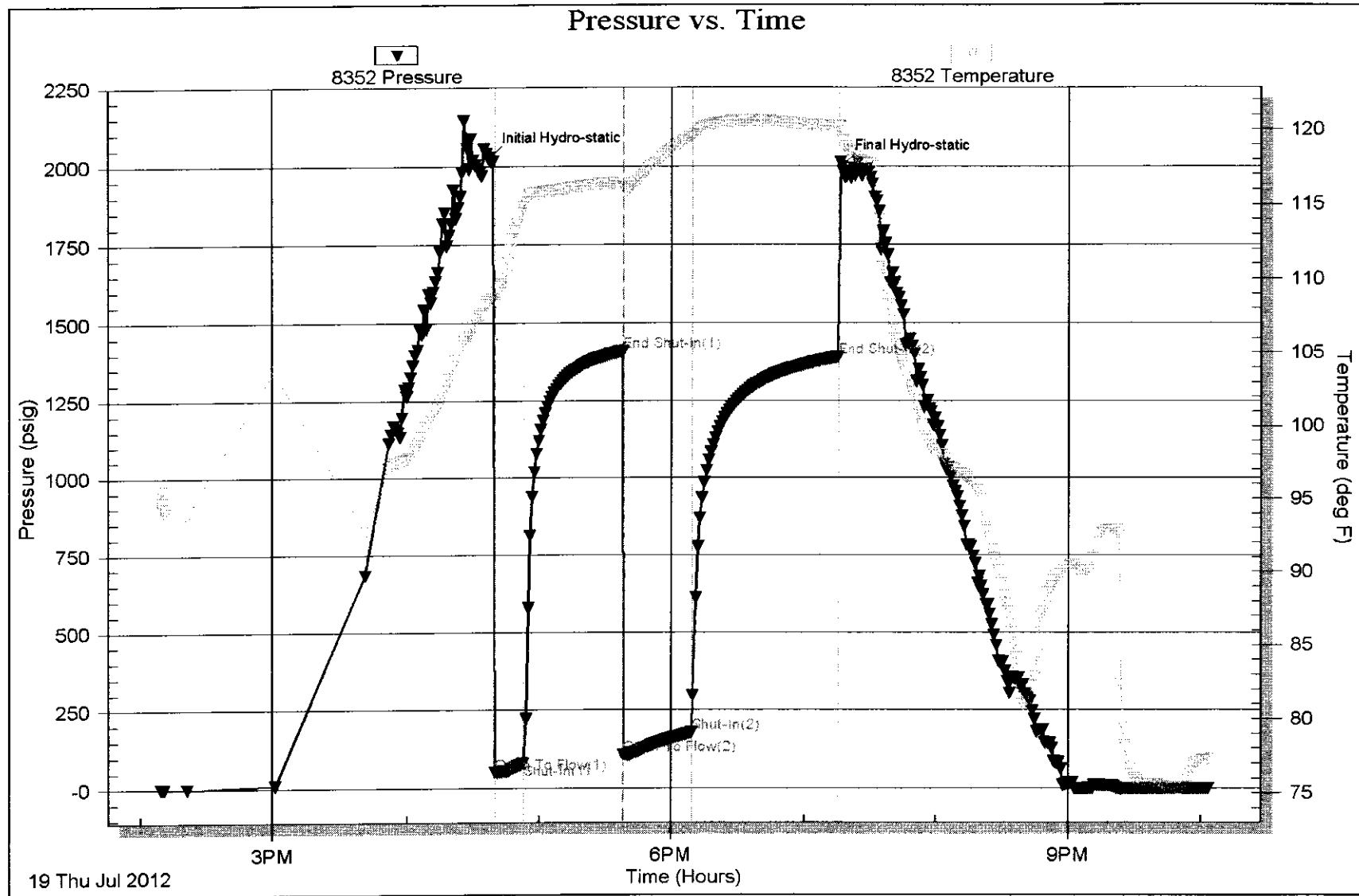
Num Gas Bombs: 0

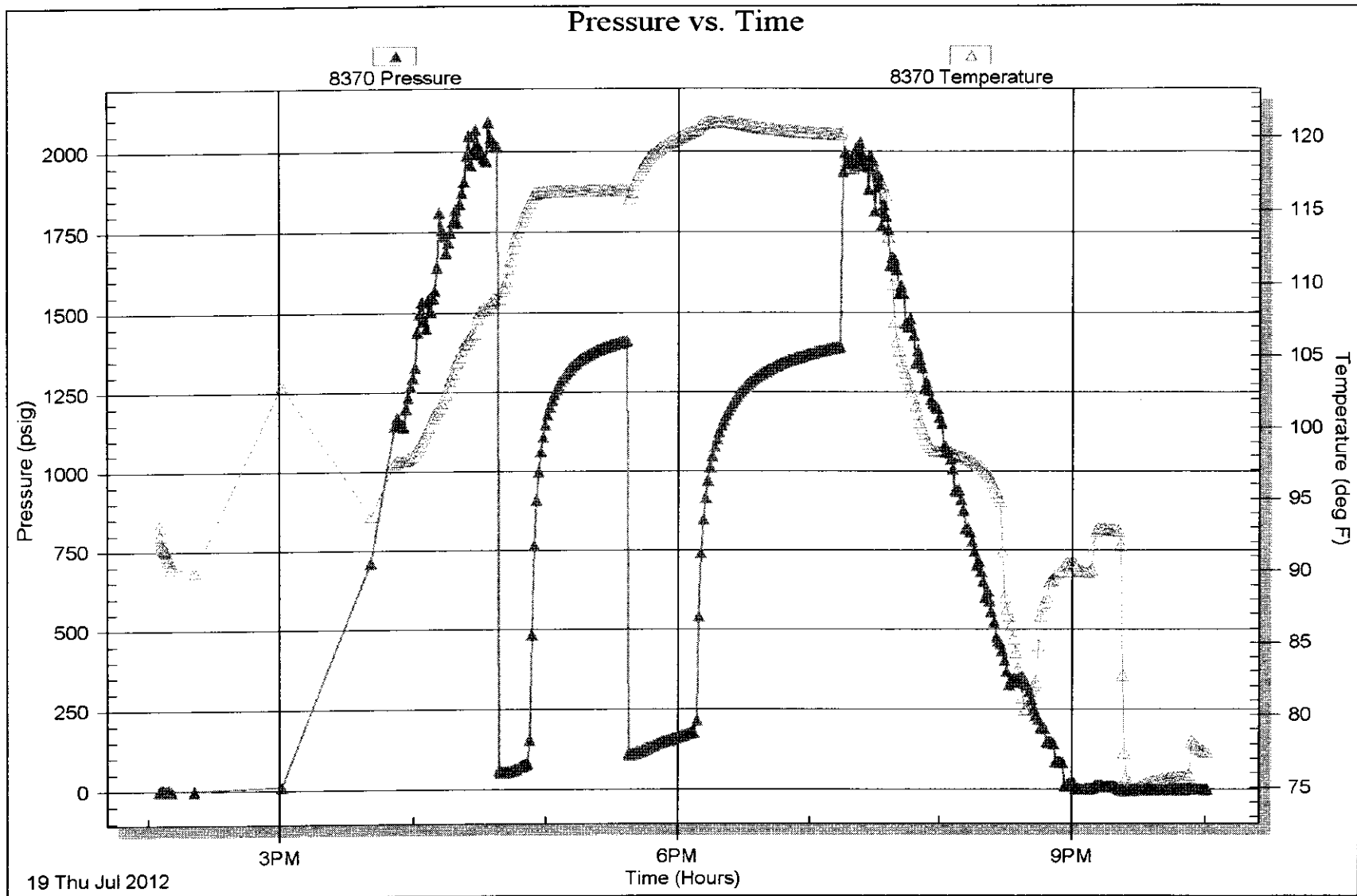
Serial #: none

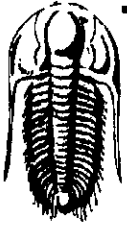
Laboratory Name:

Laboratory Location:

Recovery Comments:







**TRILOBITE
TESTING, INC.**

DRILL STEM TEST REPORT

Strata Expl. Inc.

6-27s-19w Kiowa Ks.

P.O.Box 401
Fairfield Il. 62837

Rose#1-6

Job Ticket: 47584

DST#: 3

ATTN: Jon Christensen

Test Start: 2012.07.21 @ 22:05:45

GENERAL INFORMATION:

Formation: **Miss.**

Deviated: No Whipstock: ft (KB)

Time Tool Opened: 00:56:00

Time Test Ended: 05:28:45

Test Type: Conventional Bottom Hole (Reset)

Tester: Gary Pevoteaux

Unit No: 56

Interval: **4770.00 ft (KB) To 4829.00 ft (KB) (TVD)**

Total Depth: 4829.00 ft (KB) (TVD)

Hole Diameter: 7.88 inches Hole Condition: Fair

Reference Elevations: 2263.00 ft (KB)

2252.00 ft (CF)

KB to GR/CF: 11.00 ft

Serial #: 8352

Outside

Press@RunDepth: 25.45 psig @ 4771.00 ft (KB)

Start Date: 2012.07.21

End Date:

2012.07.22

Start Time: 22:05:50

End Time:

05:28:44

Capacity: 8000.00 psig

Last Calib.: 2012.07.22

Time On Btm: 2012.07.22 @ 00:54:15

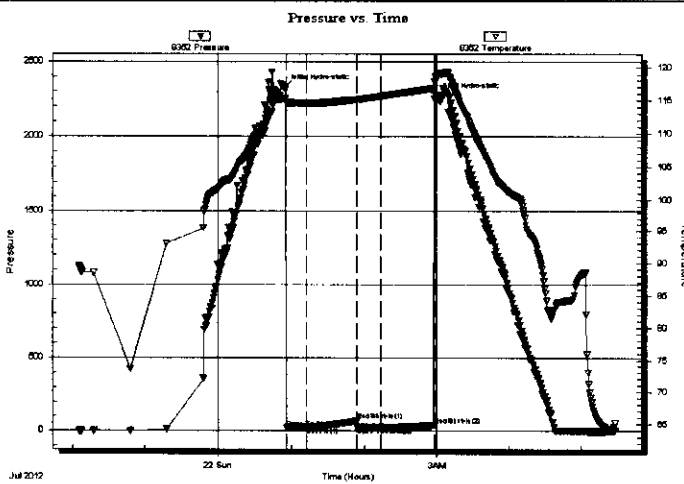
Time Off Btm: 2012.07.22 @ 02:59:45

TEST COMMENT: IF:Weak blow . 1/2" decreasing.

IS:No blow .

FF:No blow .

FS:No blow .



PRESSURE SUMMARY

Time (Min.)	Pressure (psig)	Temp (deg F)	Annotation
0	2322.06	115.32	Initial Hydro-static
2	22.48	114.75	Open To Flow (1)
19	23.68	114.60	Shut-In(1)
60	67.89	115.21	End Shut-In(1)
60	25.08	115.19	Open To Flow (2)
80	25.45	115.70	Shut-In(2)
124	38.69	116.90	End Shut-In(2)
126	2263.60	118.80	Final Hydro-static

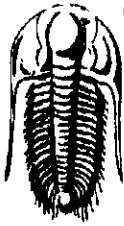
Recovery

Length (ft)	Description	Volume (bbl)
5.00	Drig.mud	0.02

* Recovery from multiple tests

Gas Rates

	Choke (inches)	Pressure (psig)	Gas Rate (Mcf/d)



TRILOBITE TESTING, INC

DRILL STEM TEST REPORT

Strata Expl.Inc.

P.O.Box 401
Fairfield Il. 62837

ATTN: Jon Christensen

6-27s-19w Kiowa Ks.

Rose#1-6

Job Ticket: 47584

DST#: 3

Test Start: 2012.07.21 @ 22:05:45

GENERAL INFORMATION:

Formation: **Miss.**

Deviated: **No** Whipstock: **ft (KB)**

Time Tool Opened: 00:56:00

Time Test Ended: 05:28:45

Test Type: Conventional Bottom Hole (Reset)

Tester: Gary Pevoteaux

Unit No: 56

Interval: **4770.00 ft (KB) To 4829.00 ft (KB) (TVD)**

Total Depth: 4829.00 ft (KB) (TVD)

Hole Diameter: 7.88 inches Hole Condition: Fair

Reference Elevations: 2263.00 ft (KB)

2252.00 ft (CF)

KB to GR/CF: 11.00 ft

Serial #: 8370

Inside

Press@RunDepth: psig @ 4771.00 ft (KB)

Start Date: 2012.07.21

End Date:

2012.07.22

Capacity: 8000.00 psig

Last Calib.:

1899.12.30

Start Time: 22:01:37

End Time:

05:26:01

Time On Btm:

Time Off Btm:

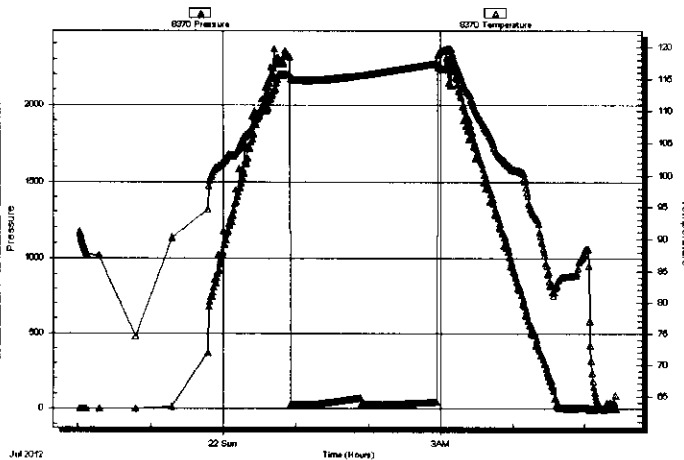
TEST COMMENT: IF:Weak blow . 1/2" decreasing.

ISI:No blow .

FF:No blow .

FSI:No blow .

Pressure vs. Time



PRESSURE SUMMARY

Time (Min.)	Pressure (psig)	Temp (deg F)	Annotation

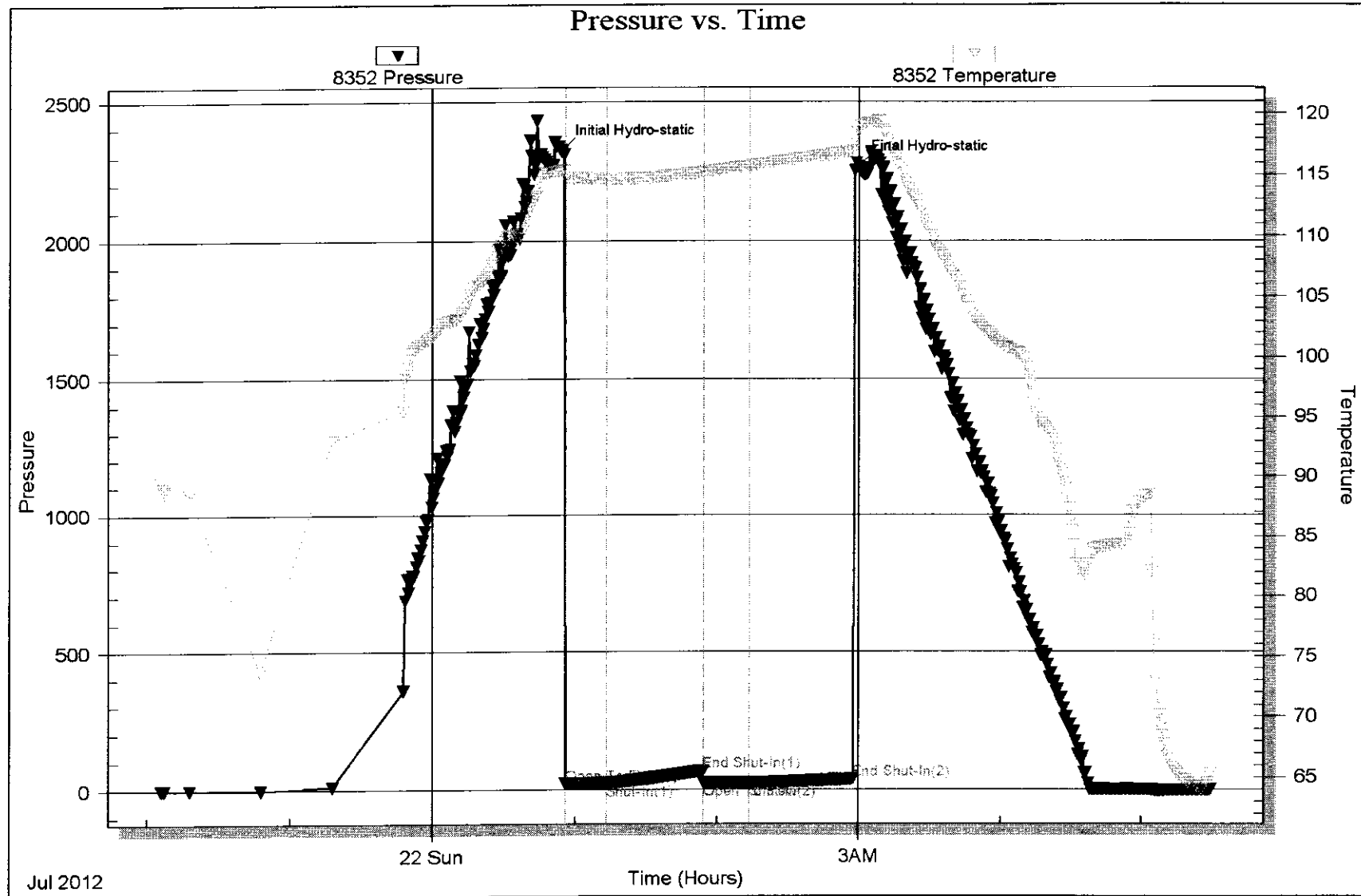
Recovery

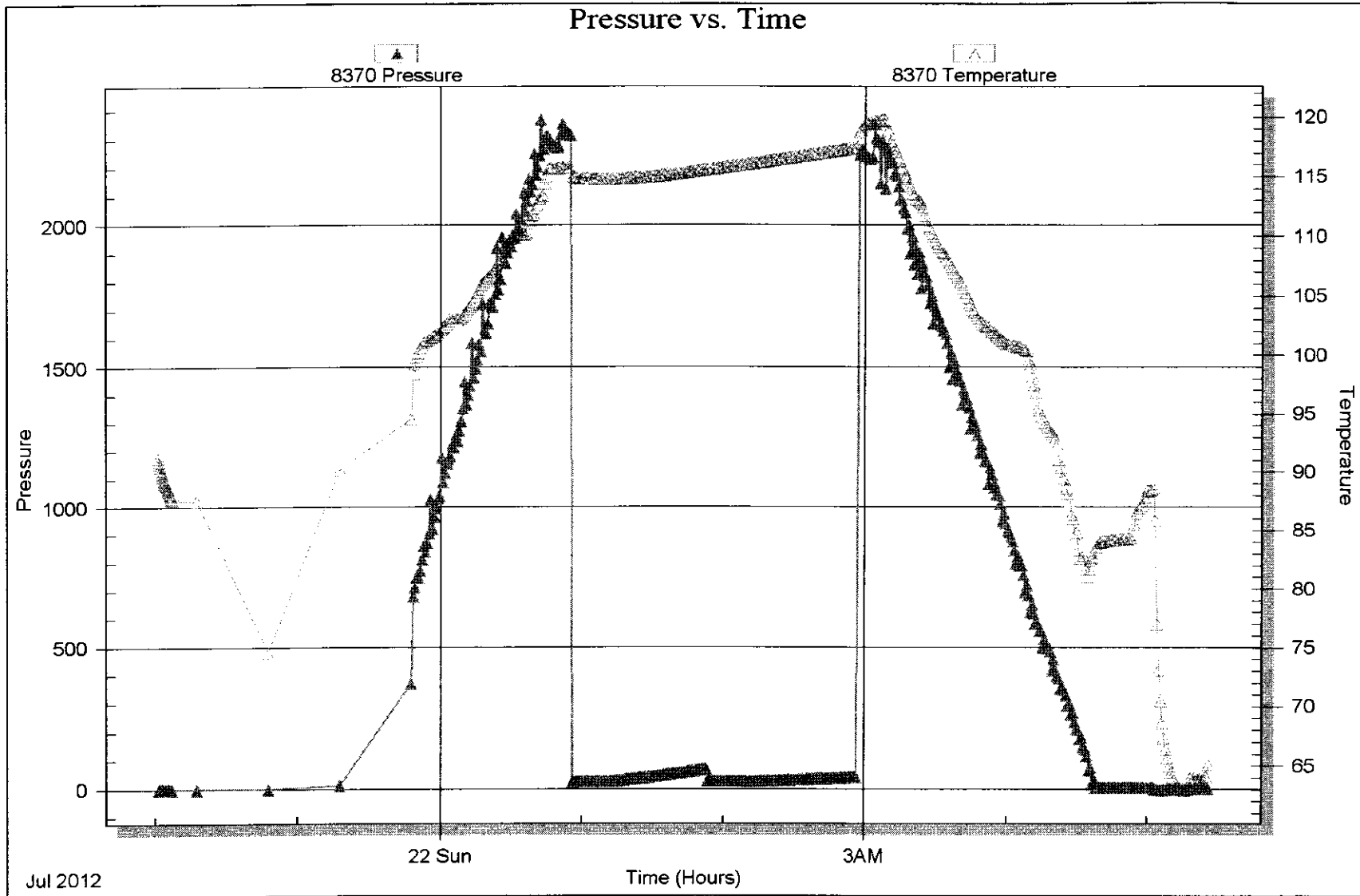
Length (ft)	Description	Volume (bbl)
5.00	Drig.mud	0.02

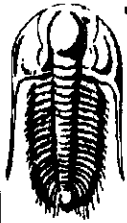
* Recovery from multiple tests

Gas Rates

Choke (inches)	Pressure (psig)	Gas Rate (Mcf/d)







**TRILOBITE
TESTING, INC**

DRILL STEM TEST REPORT

Strata Expl. Inc.

6-27s-19w Kiowa Ks.

P.O. Box 401
Fairfield Il. 62837

Rose#1-6

Job Ticket: 47585

DST#: 4

ATTN: Jon Christensen

Test Start: 2012.07.22 @ 15:12:43

GENERAL INFORMATION:

Formation: **Miss.**

Deviated: No Whipstock: ft (KB)

Time Tool Opened: 17:33:28

Time Test Ended: 00:00:58

Test Type: Conventional Bottom Hole (Reset)

Tester: Gary Pevoteaux

Unit No: 56

Interval: **4829.00 ft (KB) To 4845.00 ft (KB) (TVD)**

Reference Elevations: 2263.00 ft (KB)

Total Depth: 4845.00 ft (KB) (TVD)

2252.00 ft (CF)

Hole Diameter: 7.88 inches Hole Condition: Fair

KB to GR/CF: 11.00 ft

Serial #: 8352

Outside

Press@RunDepth: 78.26 psig @ 4830.00 ft (KB)

Capacity: 8000.00 psig

Start Date: 2012.07.22

End Date:

2012.07.23

Last Calib.: 2012.07.23

Start Time: 15:12:48

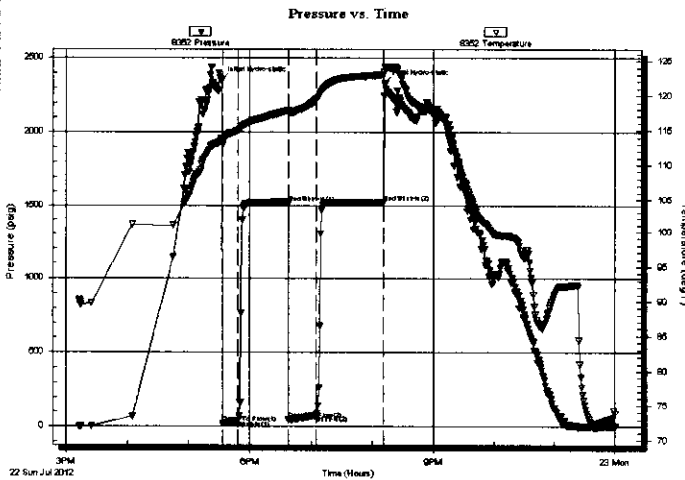
End Time:

00:00:58

Time On Btm: 2012.07.22 @ 17:31:58

Time Off Btm: 2012.07.22 @ 20:12:13

TEST COMMENT: IF:Weak blow . Slow increase to 1 1/2".
IS:No blow .
FF:Weak blow . Slow increase to 1 1/2".
FSI:No blow .



PRESSURE SUMMARY

Time (Min.)	Pressure (psig)	Temp (deg F)	Annotation
0	2348.47	113.80	Initial Hydro-static
2	18.72	112.91	Open To Flow (1)
17	40.29	114.98	Shut-In(1)
66	1519.71	117.84	End Shut-In(1)
66	45.97	117.50	Open To Flow (2)
93	78.26	119.46	Shut-In(2)
159	1527.61	123.00	End Shut-In(2)
161	2331.21	124.04	Final Hydro-static

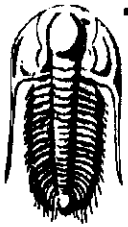
Recovery

Length (ft)	Description	Volume (bbl)
65.00	SOCMW 4%o 48%w 48%w	0.32
0.00	RW .08ohms @83deg	0.00
60.00	OCWM 24%o 16%w 60%w	0.30
5.00	Clean oil	0.02

* Recovery from multiple tests

Gas Rates

	Choke (inches)	Pressure (psig)	Gas Rate (Mcf/d)



TRILOBITE
TESTING, INC.

DRILL STEM TEST REPORT

Strata Expl. Inc.
P.O. Box 401
Fairfield Il. 62837
ATTN: Jon Christensen

6-27s-19w Kiowa Ks.
Rose#1-6
Job Ticket: 47585 **DST#: 4**
Test Start: 2012.07.22 @ 15:12:43

GENERAL INFORMATION:

Formation: **Miss.**
Deviated: No Whipstock: ft (KB)
Time Tool Opened: 17:33:28
Time Test Ended: 00:00:58
Interval: **4829.00 ft (KB) To 4845.00 ft (KB) (TVD)**
Total Depth: 4845.00 ft (KB) (TVD)
Hole Diameter: 7.88 inches Hole Condition: Fair

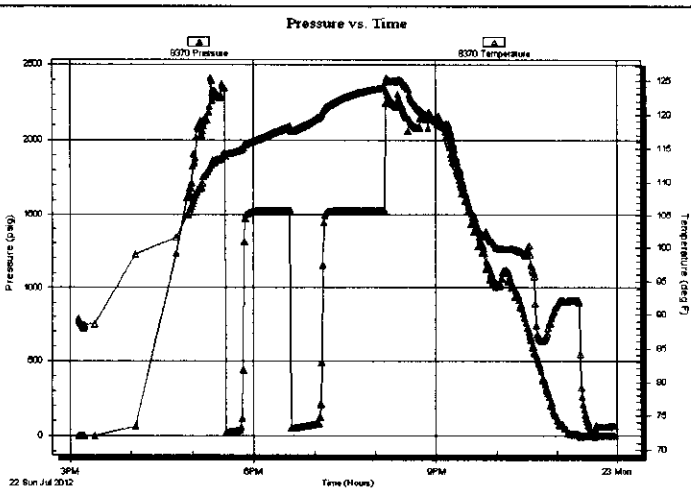
Test Type: Conventional Bottom Hole (Reset)
Tester: Gary Pevoteaux
Unit No: 56
Reference Elevations: 2263.00 ft (KB)
2252.00 ft (CF)
KB to GR/CF: 11.00 ft

Serial #: 8370

Inside

Press@RunDepth: psig @ 4830.00 ft (KB) Capacity: 8000.00 psig
Start Date: 2012.07.22 End Date: 2012.07.22 Last Calib.: 2012.07.23
Start Time: 15:08:31 End Time: 23:57:56 Time On Btm:
Time Off Btm:

TEST COMMENT: IF: Weak blow . Slow increase to 1 1/2".
IST: No blow .
FF: Weak blow . Slow increase to 1 1/2".
FSI: No blow .



PRESSURE SUMMARY

Time (Min.)	Pressure (psig)	Temp (deg F)	Annotation

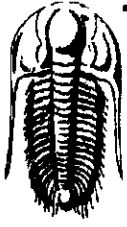
Recovery

Length (ft)	Description	Volume (bbl)
65.00	SOCMW 4%o 48%w 48%w	0.32
0.00	RW .08ohms @83deg	0.00
60.00	OCWM 24%o 16%w 60%w	0.30
5.00	Clean oil	0.02

* Recovery from multiple tests

Gas Rates

Choke (inches)	Pressure (psig)	Gas Rate (Mcf/d)



**TRILOBITE
TESTING, INC**

DRILL STEM TEST REPORT

FLUID SUMMARY

Strata Expl.Inc.

6-27s-19w Kiowa Ks.

P.O.Box 401
Fairfield Il. 62837

Rose#1-6

Job Ticket: 47585

DST#: 4

ATTN: Jon Christensen

Test Start: 2012.07.22 @ 15:12:43

Mud and Cushion Information

Mud Type: Gel Chem

Cushion Type:

Oil API:

deg API

Mud Weight: 9.00 lb/gal

Cushion Length:

ft

Water Salinity:

83000 ppm

Viscosity: 53.00 sec/qt

Cushion Volume:

bbbl

Water Loss: 11.59 in³

Gas Cushion Type:

Resistivity: 0.00 ohm.m

Gas Cushion Pressure:

psig

Salinity: 7800.00 ppm

Filter Cake: 0.20 inches

Recovery Information

Recovery Table

Length ft	Description	Volume bbbl
65.00	SOCMW 4%o 48%m 48%w	0.320
0.00	RW .08ohms @83deg	0.000
60.00	OCWM 24%o 16%w 60%m	0.295
5.00	Clean oil	0.025

Total Length: 130.00 ft

Total Volume: 0.640 bbl

Num Fluid Samples: 0

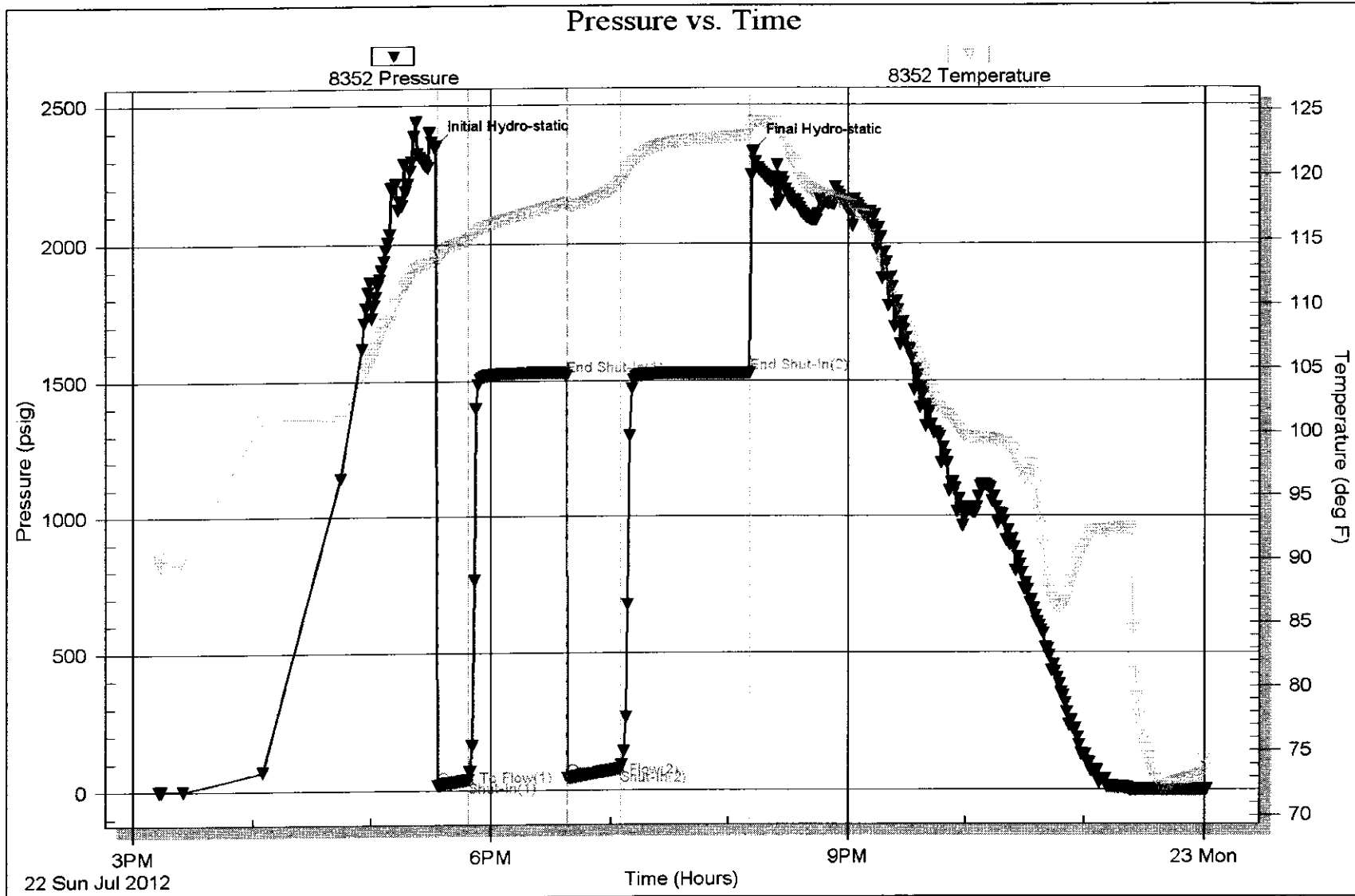
Num Gas Bombs: 0

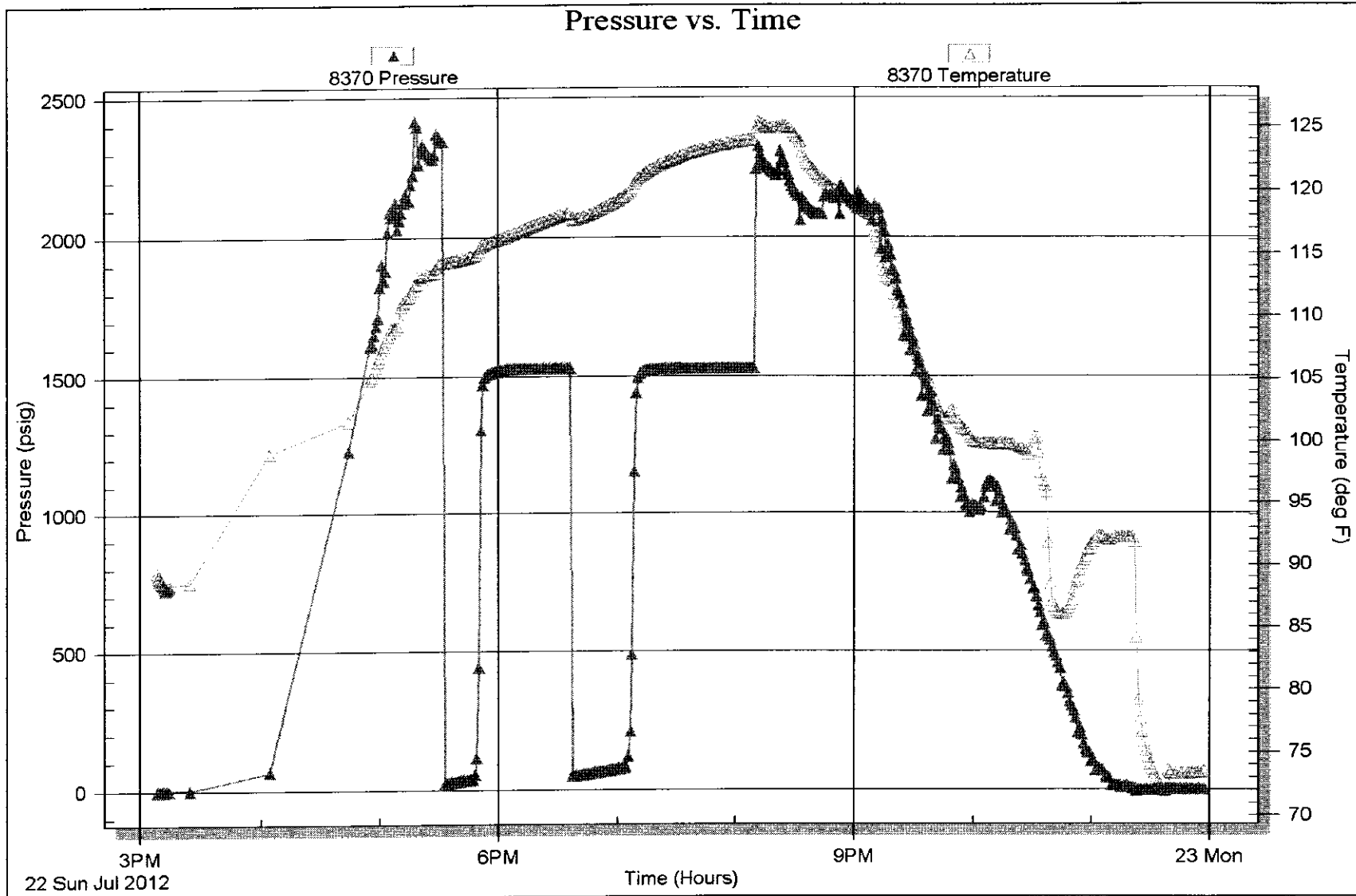
Serial #: none

Laboratory Name:

Laboratory Location:

Recovery Comments:







PAGE 1 of 1	CUST NO 1004072	INVOICE DATE 08/24/2012
INVOICE NUMBER 1718 - 90986501		

PAID
8-30-12
FNB 5448862

Pratt (620) 672-1201
 STRATA EXPLORATION
 PO Box: 401
 FAIRFIELD
 IL US 62837
 ATTN: ACCOUNTS PAYABLE

LEASE NAME: ROSE 1-6
 LOCATION:
 COUNTY: Kiowa
 STATE: KS
 JOB DESCRIPTION: Cement-New Well Casing/Pi
 JOB CONTACT:

JOB #	EQUIPMENT #	PURCHASE ORDER NO.	TERMS	DUE DATE	
40503652	27463		Net - 30 days	09/23/2012	
		QTY	U of M	UNIT PRICE	INVOICE AMOUNT
For Service Dates: 08/23/2012 to 08/23/2012					
0040503652					
171806422A Cement-New Well Casing/Pi 08/23/2012					
Cement Squeeze					
Common Cement		150.00	EA	12.00	1,800.10
Unit Mileage Chg (PU, cars one way)		45.00	MI	3.19	143.45
Heavy Equipment Mileage		90.00	MI	5.25	472.53
*Proppant & Bulk Del. Chgs., per ton mil		317.00	EA	1.20	380.42
Depth Charge: 4001' 5000'		1.00	EA	1,890.10	1,890.10
Blending & Mixing Service Charge		150.00	BAG	1.05	157.51
Cement Squeeze Manifold		1.00	EA	322.52	322.52
*Service Supervisor, first 8 hrs on loc.		1.00	EA	131.26	131.26
PLEASE REMIT TO:		SEND OTHER CORRESPONDENCE TO:		SUB TOTAL	5,297.89
BASIC ENERGY SERVICES, LP		BASIC ENERGY SERVICES, LP		TAX	131.41
PO BOX 841903		PO BOX 10460		INVOICE TOTAL	5,429.30
DALLAS, TX 75284-1903		MIDLAND, TX 79702			

USE	LEV	P/P
8/27 ROSE 1-6	5	3/7
DES		A/P
CEMENT SQUEEZE JOB		3/7
DRL	COM	LOE
X		
73990/		
1,5429.30		



BASICSM
ENERGY SERVICES
PRESSURE PUMPING & WIRELINE

10244 NE Hwy. 61
P.O. Box 8613
Pratt, Kansas 67124
Phone 620-672-1204

FIELD SERVICE TICKET

1718 38000 A

DATE _____ TICKET NO. _____

DATE OF JOB _____		DISTRICT _____		NEW <input type="checkbox"/> WELL <input type="checkbox"/>	OLD <input type="checkbox"/> WELL <input type="checkbox"/>	PROD <input type="checkbox"/>	FINJ <input type="checkbox"/>	WOW <input type="checkbox"/>	CUSTOMER ORDER NO. _____	
CUSTOMER _____				LEASE _____				WELL NO. _____		
ADDRESS _____				COUNTY _____				STATE _____		
CITY _____				STATE _____				SERVICE CREW _____		
AUTHORIZED BY _____				JOB TYPE: _____						

EQUIPMENT#	HRS	EQUIPMENT#	HRS	EQUIPMENT#	HRS	TRUCK CALLED	DATE	AM	PM	TIME
						ARRIVED AT JOB				
						START OPERATION				
						FINISH OPERATION				
						RELEASED				
						MILES FROM STATION TO WELL				

CONTRACT CONDITIONS (This contract must be signed before the job is commenced or merchandise is delivered).

The undersigned is authorized to execute this contract as an agent of the customer. As such, the undersigned agrees and acknowledges that this contract for services, materials, products, and/or supplies includes all of and only those terms and conditions appearing on the front and back of this document. No additional or substitute terms and/or conditions shall become a part of this contract without the written consent of an officer of Basic Energy Services LP.

SIGNED: _____
(WELL OWNER, OPERATOR, CONTRACTOR OR AGENT)

ITEM/PRICE REF. NO.	MATERIAL, EQUIPMENT AND SERVICES USED	UNIT	QUANTITY	UNIT PRICE	\$ AMOUNT
	COMPRESSOR UNIT	HR	1.00		150.00
	HOSE 2" DIA	FT	100	1.50	150.00
	HOSE 1.5" DIA	FT	100	1.00	100.00
	HOSE 1" DIA	FT	100	0.75	75.00
	HOSE 0.75" DIA	FT	100	0.50	50.00
	HOSE 0.5" DIA	FT	100	0.30	30.00
	HOSE 0.3" DIA	FT	100	0.20	20.00
	HOSE 0.2" DIA	FT	100	0.15	15.00
	HOSE 0.1" DIA	FT	100	0.10	10.00
	HOSE 0.05" DIA	FT	100	0.05	5.00
	HOSE 0.02" DIA	FT	100	0.02	2.00
	HOSE 0.01" DIA	FT	100	0.01	1.00

SUB TOTAL	400.00
SERVICE & EQUIPMENT	%TAX ON \$
MATERIALS	%TAX ON \$
TOTAL	400.00

CHEMICAL / ACID DATA:			

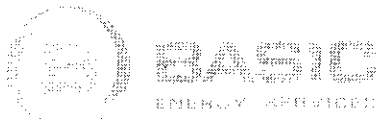
SERVICE REPRESENTATIVE _____

THE ABOVE MATERIAL AND SERVICE ORDERED BY CUSTOMER AND RECEIVED BY: _____

FIELD SERVICE ORDER NO. _____

(WELL OWNER OPERATOR CONTRACTOR OR AGENT)

LL-9-6 (REV) 3-89



PAGE 1 of 1	CUST NO 1004072	INVOICE DATE 07/26/2012
INVOICE NUMBER 1718 - 90963194		

PAID
8-7-12
FNB SA 8837

Pratt (620) 672-1201
 B STRATA EXPLORATION
 I PO Box: 401
 L FAIRFIELD
 L IL, US 62837
 T
 O ATTN: ACCOUNTS PAYABLE

LEASE NAME Rose 1 G
 LOCATION
 COUNTY Kiowa
 STATE KS
 JOB DESCRIPTION Cement-New Well Casing/Pi
 JOB CONTACT

JOB #	EQUIPMENT #	PURCHASE ORDER NO.		TERMS	DUE DATE																		
40491752	19943			Net - 30 days	08/25/2012																		
		QTY	U of M	UNIT PRICE	INVOICE AMOUNT																		
<i>For Service Dates: 07/24/2012 to 07/24/2012</i>																							
0040491752		<table border="1" style="float: right;"> <tr> <td>LEASE</td> <td>LEV</td> <td>P/P</td> </tr> <tr> <td>7/24</td> <td>5</td> <td>8/2</td> </tr> <tr> <td>DES</td> <td></td> <td>A/P</td> </tr> <tr> <td colspan="2">GENERAL LONG STRING</td> <td>8/3</td> </tr> <tr> <td>DRL</td> <td>COM LOE</td> <td>G/L</td> </tr> <tr> <td></td> <td></td> <td>73551/7362</td> </tr> </table>				LEASE	LEV	P/P	7/24	5	8/2	DES		A/P	GENERAL LONG STRING		8/3	DRL	COM LOE	G/L			73551/7362
LEASE	LEV	P/P																					
7/24	5	8/2																					
DES		A/P																					
GENERAL LONG STRING		8/3																					
DRL	COM LOE	G/L																					
		73551/7362																					
171806298A Cement-New Well Casing/Pi 07/24/2012 Cement 5 1/2" Longstring																							
50/50 POZ		900.00	EA	8.00	2,640.00 T																		
Cellulose		75.00	EA	2.96	222.00 T																		
Gypsum		1,260.00	EA	0.60	756.00 T																		
FLA-222 Low Fluid Loss		126.00	EA	5.00	756.00 T																		
Gilsonite		1,800.00	EA	0.54	964.80 T																		
KCL, Potassium Chloride		680.00	EA	1.20	816.00 T																		
"Latch Down Plug & Baffle, 5 1/2" (Blue)		1.00	EA	320.00	320.00																		
"Auto Fill Float Shoe 5 1/2" (Blue)"		1.00	EA	288.00	288.00																		
"Turboizer, 5 1/2" (Blue)"		12.00	EA	88.00	1,056.00																		
"5 1/2" Basket (Blue)"		1.00	EA	232.00	232.00																		
"Cement Scratchers Cable Type, 5 1/2" "		6.00	EA	60.00	360.00																		
Claymax KCL Substitute		5.00	EA	28.00	140.00 T																		
Mud Flush		1,000.00	EA	0.69	688.00 T																		
"Unit Mileage Chg (PU, cars one way)"		30.00	MI	3.40	102.00																		
Heavy equipment Mileage		60.00	MI	5.60	336.00																		
"Prepact & Bulk Del. Chgs., per ton mil		378.00	EA	1.28	483.84																		
Depth Charge: 4001' 5000'		1.00	EA	2,016.00	2,016.00																		
Blending & Mixing Service Charge		300.00	BAG	1.12	336.00																		
Plug Container Util. Chg.		1.00	EA	200.00	200.00																		
"Service Supervisor, first 8 hrs on loc.		1.00	EA	140.00	140.00																		
PLEASE REMIT TO:				SEND OTHER CORRESPONDENCE TO:																			
BASIC ENERGY SERVICES, LP PO BOX 841903 DALLAS, TX 75284-1903		BASIC ENERGY SERVICES, LP PO BOX 10460 MIDLAND, TX 79702		SUB TOTAL	12,852.64																		
				TAX	509.74																		
				INVOICE TOTAL	13,362.38																		



TREATMENT REPORT

Owner		Lease No.		Date	
Well #		Well #		Date	
Order #	Station	Casing	Depth	County	State
Type Job			Formation	Legal Description	

PIPE DATA		PERFORATING DATA		FLUID USED		TREATMENT RESUME		
Casing Size	Tubing Size	Shots/Ft		Acid		RATE	PRESS	ISIP
Depth	Depth	From	To	Pre Pad	Max			5 Min.
Volume	Volume	From	To	Pad	Min			10 Min.
Max Press	Max Press	From	To	Frac	Avg			15 Min.
Well Connection	Annulus Vol.	From	To		HHP Used			Annulus Pressure
Plug Depth	Packer Depth	From	To	Flush	Gas Volume			Total Load

Customer Representative	Station Manager	Treater
-------------------------	-----------------	---------

Service Units									
Driver Names									

Time	Casing Pressure	Tubing Pressure	Bbls. Pumped	Rate	Service Log
1:00	100	100	5	5	...
1:05	100	100	5	5	...
1:10	100	100	5	5	...
1:15	100	100	5	5	...
1:20	100	100	5	5	...
1:25	100	100	5	5	...
1:30	100	100	5	5	...
1:35	100	100	5	5	...
1:40	100	100	5	5	...
1:45	100	100	5	5	...
1:50	100	100	5	5	...
1:55	100	100	5	5	...
2:00	100	100	5	5	...
2:05	100	100	5	5	...
2:10	100	100	5	5	...
2:15	100	100	5	5	...
2:20	100	100	5	5	...
2:25	100	100	5	5	...
2:30	100	100	5	5	...
2:35	100	100	5	5	...
2:40	100	100	5	5	...
2:45	100	100	5	5	...
2:50	100	100	5	5	...
2:55	100	100	5	5	...
3:00	100	100	5	5	...
3:05	100	100	5	5	...
3:10	100	100	5	5	...
3:15	100	100	5	5	...
3:20	100	100	5	5	...
3:25	100	100	5	5	...
3:30	100	100	5	5	...
3:35	100	100	5	5	...
3:40	100	100	5	5	...
3:45	100	100	5	5	...
3:50	100	100	5	5	...
3:55	100	100	5	5	...
4:00	100	100	5	5	...

Conservation Division
Finney State Office Building
130 S. Market, Rm. 2078
Wichita, KS 67202-3802



Phone: 316-337-6200
Fax: 316-337-6211
<http://kcc.ks.gov/>

Mark Stevers, Chairman
Thomas E. Wright, Commissioner
Shari Feist Albrecht, Commissioner

Sam Brownback, Governor

November 13, 2012

John
Strata Exploration, Inc.
PO BOX 401
FAIRFIELD, IL 62837-0401

Re: ACO1
API 15-097-21730-00-00
Rose 1-6
SW/4 Sec.06-27S-19W
Kiowa County, Kansas

Dear Production Department:

We are herewith requesting that the Well Completion Form ACO-1 and attached information for the subject well be held confidential for a period of two years.

Should you have any questions or need additional information regarding subject well, please contact our office.

Respectfully,
John

Conservation Division
Finney State Office Building
130 S. Market, Rm. 2078
Wichita, KS 67202-3802



Phone: 316-337-6200
Fax: 316-337-6211
<http://kcc.ks.gov/>

Mark Sievers, Chairman
Thomas E. Wright, Commissioner
Shari Feist Albrecht, Commissioner

Sam Brownback, Governor

November 14, 2012

John
Strata Exploration, Inc.
PO BOX 401
FAIRFIELD, IL 62837-0401

Re: ACO-1
API 15-097-21730-00-00
Rose 1-6
SW/4 Sec.06-27S-19W
Kiowa County, Kansas

Dear John:

K.A.R. 82-3-107 provides for all completion information to be filed within 120 days of the spud date. Subsection(e)(2) of that regulation states "All rights to confidentiality shall be lost if the filings are not timely."

The above referenced well was spudded on 07/12/2012 and the ACO-1 was received on November 13, 2012 (not within the 120 days timely requirement).

Therefore, your request for confidential treatment of data contained within the ACO-1 filing cannot be granted at this time.

If you should have any questions, please do not hesitate to contact me at (316)337-6200.

Sincerely,

Production Department