



KANSAS CORPORATION COMMISSION 1099517  
OIL & GAS CONSERVATION DIVISION

Form ACO-1  
June 2009  
Form Must Be Typed  
Form must be Signed  
All blanks must be Filled

WELL COMPLETION FORM  
WELL HISTORY - DESCRIPTION OF WELL & LEASE

OPERATOR: License # 6039  
Name: L. D. Drilling, Inc.  
Address 1: 7 SW 26TH AVE  
Address 2: \_\_\_\_\_  
City: GREAT BEND State: KS Zip: 67530 + 6525  
Contact Person: L. D. DAVIS  
Phone: ( 620 ) 793-3051  
CONTRACTOR: License # 33323  
Name: Petromark Drilling, LLC  
Wellsite Geologist: KIM SHOEMAKER  
Purchaser: NA

Designate Type of Completion:

- New Well     Re-Entry     Workover
- Oil     WSW     SWD     SLOW
- Gas     D&A     ENHR     SIGW
- OG     GSW     Temp. Abd.
- CM (Coal Bed Methane)
- Cathodic     Other (Core, Expl., etc.): \_\_\_\_\_

If Workover/Re-entry: Old Well Info as follows:

Operator: \_\_\_\_\_  
Well Name: \_\_\_\_\_  
Original Comp. Date: \_\_\_\_\_ Original Total Depth: \_\_\_\_\_

Deepening     Re-perf.     Conv. to ENHR     Conv. to SWD

Conv. to GSW

Plug Back: \_\_\_\_\_ Plug Back Total Depth \_\_\_\_\_

Commingled    Permit #: \_\_\_\_\_

Dual Completion    Permit #: \_\_\_\_\_

SWD    Permit #: \_\_\_\_\_

ENHR    Permit #: \_\_\_\_\_

GSW    Permit #: \_\_\_\_\_

| 09/17/2012                        | 09/23/2012      | 09/23/2012                              |
|-----------------------------------|-----------------|---|
| Spud Date or<br>Recompletion Date | Date Reached TD | Completion Date or<br>Recompletion Date |

API No. 15 - 15-009-25746-00-00

Spot Description: \_\_\_\_\_  
SW NE SW NE Sec. 15 Twp. 19 S. R. 12  East  West  
1664 Feet from  North /  South Line of Section  
1656 Feet from  East /  West Line of Section

Footages Calculated from Nearest Outside Section Corner:

- NE     NW     SE     SW

County: Barton  
Lease Name: KEITH Well #: 1-15  
Field Name: CHEYENNE VIEW

Producing Formation: NA

Elevation: Ground: 1841 Kelly Bushing: 1841

Total Depth: 3430 Plug Back Total Depth: \_\_\_\_\_

Amount of Surface Pipe Set and Cemented at: 389 Feet

Multiple Stage Cementing Collar Used?  Yes  No

If yes, show depth set: \_\_\_\_\_ Feet

If Alternate II completion, cement circulated from: \_\_\_\_\_

feet depth to: \_\_\_\_\_ w/ \_\_\_\_\_ sx cmt.

Drilling Fluid Management Plan

(Data must be collected from the Reserve Pit)

Chloride content: 5000 ppm Fluid volume: 400 bbls

Dewatering method used: Hauled to Disposal

Location of fluid disposal if hauled offsite:

Operator Name: L. D. DRILLING, INC.

Lease Name: DAVIS RANCH OWWD License #: 6039

Quarter NW Sec. 14 Twp. 21 S. R. 12  East  West

County: STAFFORD Permit #: D30736

AFFIDAVIT

I am the affiant and I hereby certify that all requirements of the statutes, rules and regulations promulgated to regulate the oil and gas industry have been fully complied with and the statements herein are complete and correct to the best of my knowledge.

Submitted Electronically

KCC Office Use ONLY

- Letter of Confidentiality Received  
Date: \_\_\_\_\_
- Confidential Release Date: \_\_\_\_\_
- Wireline Log Received
- Geologist Report Received
- UIC Distribution
- ALT  I  II  III Approved by: Deanna Garrison Date: 11/07/2012



1099517

Operator Name: L. D. Drilling, Inc. Lease Name: KEITH Well #: 1-15
Sec. 15 Twp. 19 S. R. 12 East West County: Barton

INSTRUCTIONS: Show important tops and base of formations penetrated. Detail all cores. Report all final copies of drill stems tests giving interval tested, time tool open and closed, flowing and shut-in pressures, whether shut-in pressure reached static level, hydrostatic pressures, bottom hole temperature, fluid recovery, and flow rates if gas to surface test, along with final chart(s). Attach extra sheet if more space is needed. Attach complete copy of all Electric Wire-line Logs surveyed. Attach final geological well site report.

Drill Stem Tests Taken (Attach Additional Sheets)
Samples Sent to Geological Survey
Cores Taken
Electric Log Run
Electric Log Submitted Electronically
List All E. Logs Run:
Log Formation (Top), Depth and Datum Sample
Name Top Datum
HEEBNER 3010 -1170
BROWN LIME 3123 -1283
LANSING 3140 -1300
BASE KANSAS CITY 3391 -1551
CONG CHERT 3416 -1576

CASING RECORD
Report all strings set-conductor, surface, intermediate, production, etc.
Table with columns: Purpose of String, Size Hole Drilled, Size Casing Set (In O.D.), Weight Lbs. / Ft., Setting Depth, Type of Cement, # Sacks Used, Type and Percent Additives

ADDITIONAL CEMENTING / SQUEEZE RECORD
Table with columns: Purpose, Depth Top Bottom, Type of Cement, # Sacks Used, Type and Percent Additives

PERFORATION RECORD - Bridge Plugs Set/Type
Specify Footage of Each Interval Perforated
Table with columns: Shots Per Foot, PERFORATION RECORD, Acid, Fracture, Shot, Cement Squeeze Record, Depth

TUBING RECORD: Size: Set At: Packer At: Liner Run:
Date of First, Resumed Production, SWD or ENHR.
Producing Method:
Estimated Production Per 24 Hours: Oil Bbls., Gas Mcf, Water Bbls., Gas-Oil Ratio, Gravity

DISPOSITION OF GAS:
METHOD OF COMPLETION:
PRODUCTION INTERVAL:



# BASIC

energy services, L.P.

## TREATMENT REPORT

|                                      |                            |                         |                      |                                      |                    |
|--------------------------------------|----------------------------|-------------------------|----------------------|--------------------------------------|--------------------|
| Customer<br><i>L.D. Drilling INC</i> |                            | Lease No.               |                      | Date<br><i>9-18-12</i>               |                    |
| Lease<br><i>Keith</i>                |                            | Well #<br><i>1-15</i>   |                      |                                      |                    |
| Field Order #<br><i>#06375A</i>      | Station<br><i>Pratt KS</i> | Casing<br><i>8 5/8"</i> | Depth<br><i>389'</i> | County<br><i>Barton</i>              | State<br><i>Ks</i> |
| Type Job<br><i>8 5/8" Surface</i>    |                            | Formation<br><i>ENW</i> | TD<br><i>394'</i>    | Legal Description<br><i>15-19-12</i> |                    |

| PIPE DATA                    |              | PERFORATING DATA |    | FLUID USED                       |                             | TREATMENT RESUME     |                  |
|------------------------------|--------------|------------------|----|----------------------------------|-----------------------------|----------------------|------------------|
| Casing Size<br><i>8 5/8"</i> | Tubing Size  | Shots/Ft         |    | Acid<br><i>350 sks 60/40 Poz</i> | RATE<br><i>3 gals/45 CF</i> | PRESS<br><i>15 #</i> | ISIP             |
| Depth<br><i>389'</i>         | Depth        | From             | To | Pre Pad                          | Max                         |                      | 5 Min.           |
| Volume<br><i>23 1/2</i>      | Volume       | From             | To | Pad                              | Min                         |                      | 10 Min.          |
| Max Press<br><i>200</i>      | Max Press    | From             | To | Frac                             | Avg                         |                      | 15 Min.          |
| Well Connection<br><i>PC</i> | Annulus Vol. | From             | To |                                  | HHP Used                    |                      | Annulus Pressure |
| Plug Depth<br><i>365</i>     | Packer Depth | From             | To | Flush<br><i>Disp H2O</i>         | Gas Volume                  |                      | Total Load       |

Customer Representative: *Dia "TP"* Station Manager: *Scotty* Treater: *Allen*

|               |              |              |               |              |              |  |  |  |  |
|---------------|--------------|--------------|---------------|--------------|--------------|--|--|--|--|
| Service Units | <i>78443</i> | <i>33708</i> | <i>20920</i>  | <i>70959</i> | <i>19918</i> |  |  |  |  |
| Driver Names  | <i>Allen</i> | <i>Eric</i>  | <i>Wright</i> | <i>Dale</i>  | <i>Phye</i>  |  |  |  |  |

| Time          | Casing Pressure | Tubing Pressure | Bbls. Pumped | Rate     | Service Log                                  |
|---------------|-----------------|-----------------|--------------|----------|--|
| <i>530 AM</i> |                 |                 |              |          | <i>ON Loc. Discuss Safety, Setup Plan to</i> |
| <i>540</i>    |                 |                 |              |          | <i>Rig Pulling Pipe</i>                      |
| <i>600</i>    |                 |                 |              |          | <i>out of Hole Rig up to</i>                 |
| <i>607</i>    |                 |                 |              |          | <i>Run 8 5/8" casing. 24 #</i>               |
|               |                 |                 |              |          | <i>Start 8 5/8 casing</i>                    |
| <i>700</i>    |                 |                 |              |          | <i>CASING @ 389' Hookup +</i>                |
|               |                 |                 |              |          | <i>CIR w/ Rig.</i>                           |
| <i>710</i>    | <i>200 #</i>    |                 |              | <i>5</i> | <i>Mix + Pump 350 sks 60/40</i>              |
|               |                 |                 |              |          | <i>Poz, 3% CC, 1/4" C.F. 15 #</i>            |
|               |                 |                 | <i>76</i>    |          | <i>Finish mix</i>                            |
|               |                 |                 |              |          | <i>Release wooden Plug 8 5/8"</i>            |
| <i>725</i>    |                 |                 |              | <i>5</i> | <i>start Disp.</i>                           |
| <i>730</i>    | <i>250 #</i>    |                 | <i>2 3/4</i> | <i>3</i> | <i>Plug down</i>                             |
|               |                 |                 |              |          | <i>Shut in @ well</i>                        |
|               |                 |                 |              |          | <i>Release PSI To TRK.</i>                   |
|               |                 |                 |              |          | <i>wash up + Rackup Equip.</i>               |
| <i>815</i>    |                 |                 |              |          | <i>Job complete</i>                          |
|               |                 |                 |              |          | <i>cement CIR To P.t.</i>                    |
|               |                 |                 |              |          | <i>thanks Allen, Eric, Dale.</i>             |



|                               |                      |                                   |
|-------------------------------|----------------------|-----------------------------------|
| Customer <i>L.O. Drilling</i> | Lease No.            | Date <i>9-23-12</i>               |
| Lease <i>Kelth</i>            | Well # <i>1-15</i>   |                                   |
| Field Order # <i>6605</i>     | Station <i>Pratt</i> | Casing <i>4 1/2</i>               |
| Type Job <i>cnw PTA</i>       | Formation            | Depth                             |
|                               |                      | County <i>Franklin</i>            |
|                               |                      | State <i>KS</i>                   |
|                               |                      | Legal Description <i>15-19-12</i> |

| PIPE DATA             |              | PERFORATING DATA |    | FLUID USED |            | TREATMENT RESUME |                  |  |
|-----------------------|--------------|------------------|----|------------|------------|------------------|------------------|--|
| Casing Size           | Tubing Size  | Shots/Ft         |    | Acid       | RATE       | PRESS            | ISIP             |  |
| <i>4 1/2</i>          |              |                  |    |            |            |                  |                  |  |
| Depth <i>675</i>      | Depth        | From             | To | Pre Pad    | Max        |                  | 5 Min.           |  |
| Volume                | Volume       | From             | To | Pad        | Min        |                  | 10 Min.          |  |
| Max Press             | Max Press    | From             | To | Frac       | Avg        |                  | 15 Min.          |  |
| Well Connection       | Annulus Vol. | From             | To |            | HHP Used   |                  | Annulus Pressure |  |
| Plug Depth <i>675</i> | Packer Depth | From             | To | Flush      | Gas Volume |                  | Total Load       |  |

|                                    |                               |                           |
|------------------------------------|-------------------------------|---------------------------|
| Customer Representative <i>Jim</i> | Station Manager <i>SCOTTY</i> | Treater <i>JOE MELSON</i> |
|------------------------------------|-------------------------------|---------------------------|

|               |                |              |               |              |              |  |  |  |  |
|---------------|----------------|--------------|---------------|--------------|--------------|--|--|--|--|
| Service Units | <i>19559</i>   | <i>19843</i> | <i>19960</i>  | <i>21010</i> | <i>37586</i> |  |  |  |  |
| Driver Names  | <i>EDMUNDO</i> | <i>REED</i>  | <i>MELSON</i> |              |              |  |  |  |  |

| Time            | Casing Pressure | Tubing Pressure | Bbls, Pumped | Rate     | Service Log                                    |
|-----------------|-----------------|-----------------|--------------|----------|--|
| <i>11:15 AM</i> |                 |                 |              |          | <i>on Loc. Safety meeting</i>                  |
| <i>2:15 PM</i>  |                 |                 |              |          | <i>Plug 1 set at 675'</i>                      |
|                 | <i>110</i>      |                 | <i>5</i>     | <i>4</i> | <i>H2O spacer</i>                              |
|                 | <i>110</i>      |                 | <i>7</i>     | <i>4</i> | <i>Mix 60/40 POZ with 4% gel</i>               |
| <i>12:25</i>    | <i>100</i>      |                 | <i>2</i>     | <i>4</i> | <i>H2O spacer</i>                              |
|                 |                 |                 |              |          | <i>Plug 2 set at 440'</i>                      |
|                 |                 |                 | <i>1</i>     | <i>4</i> | <i>H2O spacer</i>                              |
|                 |                 |                 | <i>21</i>    | <i>4</i> | <i>Mix 60/40 POZ with 4% gel</i>               |
|                 |                 |                 |              |          | <i>Plug 3 40'</i>                              |
|                 |                 |                 | <i>4.3</i>   | <i>4</i> | <i>Mix 60/40 POZ put wood Plug in TOP PLUG</i> |
| <i>2</i>        |                 |                 | <i>5</i>     | <i>4</i> | <i>Rathole</i>                                 |
| <i>2:15</i>     |                 |                 |              |          | <i>JOB COMPLETE</i>                            |
|                 |                 |                 |              |          | <i>Thank you</i>                               |
|                 |                 |                 |              |          | <i>Yuel</i>                                    |



**DIAMOND TESTING**

P.O. Box 157  
**HOISINGTON, KANSAS 67544**  
(620) 653-7550 • (800) 542-7313  
STC/Keith1-15dst1

Company L. D. Drilling, Inc. Lease & Well No. Keith No. 1-15  
Elevation 1840 KB Formation Lansing "A" & "B" Effective Pay \_\_\_\_\_ Ft. Ticket No. J3011  
Date 9-21-12 Sec. 15 Twp. 19S Range 12W County Barton State Kansas  
Test Approved By Kim B. Shoemaker Diamond Representative John C. Riedl

Formation Test No. 1 Interval Tested from 3,144 ft. to 3,175 ft. Total Depth 3,175 ft.  
Packer Depth 3,139 ft. Size 6 3/4 in. Packer Depth \_\_\_\_\_ ft. Size \_\_\_\_\_ in.  
Packer Depth 3,144 ft. Size 6 3/4 in. Packer Depth \_\_\_\_\_ ft. Size \_\_\_\_\_ in.  
Depth of Selective Zone Set \_\_\_\_\_ ft.

Top Recorder Depth (Inside) 3,147 ft. Recorder Number 30046 Cap. 6,000 psi.  
Bottom Recorder Depth (Outside) 3,172 ft. Recorder Number 11073 Cap. 4,000 psi.  
Below Straddle Recorder Depth \_\_\_\_\_ ft. Recorder Number \_\_\_\_\_ Cap. \_\_\_\_\_ psi.

Drilling Contractor Petromark Drilling, LLC - Rig 2 Drill Collar Length 120 ft I.D. 2 1/4 in.  
Mud Type Chemical Viscosity 58 Weight Pipe Length \_\_\_\_\_ ft I.D. \_\_\_\_\_ in.  
Weight 9.3 Water Loss 9.2 cc. Drill Pipe Length 3,002 ft I.D. 3 1/2 in.  
Chlorides 4,000 P.P.M. Test Tool Length 22 ft Tool Size 3 1/2-IF in.  
Jars: Make Sterling Serial Number Not Run Anchor Length 31 ft. Size 4 1/2-FH in.  
Did Well Flow? No Reversed Out No Surface Choke Size 1 in. Bottom Choke Size 5/8 in.  
Main Hole Size 7 7/8 in. Tool Joint Size 4 1/2-XH in.

Blow: 1st Open: Weak blow Dead in 25 mins. No blow back during shut-in.  
2nd Open: Weak blow. Dead in 5 mins. No blow back during shut-in.

Recovered 40 ft. of oil specked drilling mud = .196800 bbls.  
Recovered \_\_\_\_\_ ft. of \_\_\_\_\_  
Recovered \_\_\_\_\_ ft. of \_\_\_\_\_  
Recovered \_\_\_\_\_ ft. of \_\_\_\_\_  
Recovered \_\_\_\_\_ ft. of \_\_\_\_\_  
Recovered \_\_\_\_\_ ft. of \_\_\_\_\_  
Remarks \_\_\_\_\_

Time Set Packer(s) 1:45 P.M. Time Started off Bottom 3:45 P.M. Maximum Temperature 101°  
Initial Hydrostatic Pressure.....(A) 1534 P.S.I.  
Initial Flow Period.....Minutes 30 (B) 17 P.S.I. to (C) 25 P.S.I.  
Initial Closed In Period.....Minutes 30 (D) 292 P.S.I.  
Final Flow Period.....Minutes 30 (E) 26 P.S.I. to (F) 34 P.S.I.  
Final Closed In Period.....Minutes 30 (G) 223 P.S.I.  
Final Hydrostatic Pressure.....(H) 1513 P.S.I.

## GENERAL INFORMATION

### Client Information:

Company: L D DRILLING INC

Contact: L D DAVIS

Phone: Fax: e-mail:

### Site Information:

Contact: KIM SHOEMAKER

Phone: Fax: e-mail:

### Well Information:

Name: KEITH 1-15

Operator: L D DRILLING INC

Location-Downhole:

Location-Surface: S15/19S/12W

### Test Information:

Company: DIAMOND TESTING

Representative: JOHN RIEDL

Supervisor: KIM SHOEMAKER

Test Type: DST #1 CONVENTIONAL

Job Number: D1215

Test Unit:

Start Date: 2012/09/21

Start Time: 12:15:00

End Date: 2012/09/21

End Time: 17:05:00

Report Date: 2012/09/21

Prepared By: JOHN RIEDL

### Remarks:

Qualified By: KIM SHOEMAKER

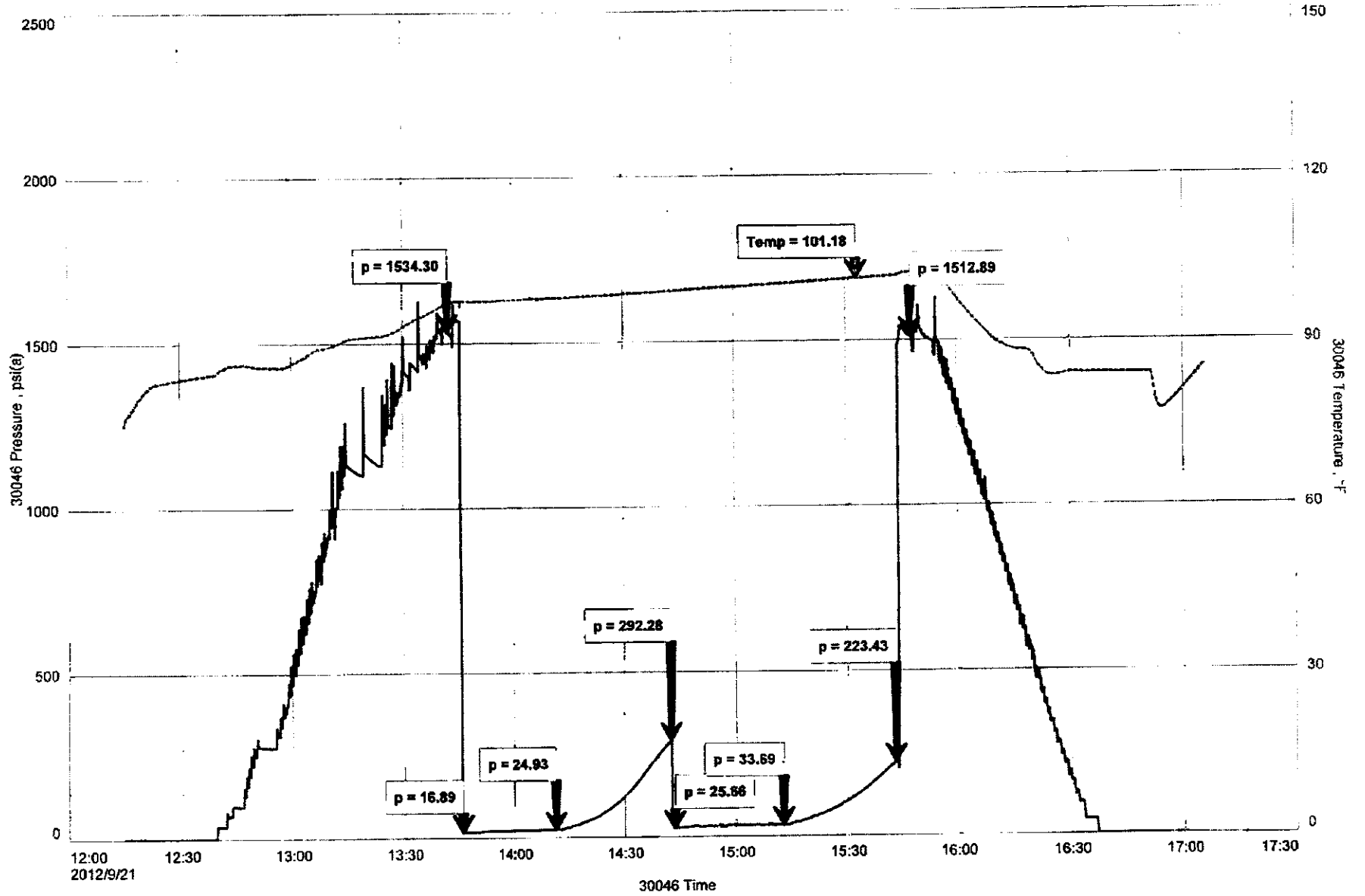
RECOVERY: 40' OIL SPECKED DRILLING MUD

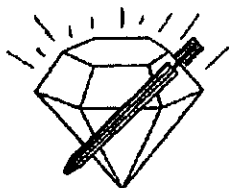


L D DRILLING INC  
Start Test Date: 2012/09/21  
Final Test Date: 2012/09/21

# KEITH 1-15

KEITH 1-15  
Formation: LANS A-B  
Job Number: D1215





**DIAMOND TESTING**  
P.O. Box 157  
**HOISINGTON, KANSAS 67544**  
(620) 653-7550 • (800) 542-7313  
STC/Keith1-15dst2

Company L. D. Drilling, Inc. Lease & Well No. Keith No. 1-15  
Elevation 1840 KB Formation Lansing "E" & "F" Effective Pay \_\_\_\_\_ Ft. Ticket No. J3012  
Date 9-22-12 Sec. 15 Twp. 19S Range 12W County Barton State Kansas  
Test Approved By Kim B. Shoemaker Diamond Representative John C. Riedl

Formation Test No. 2 Interval Tested from 3,173 ft. to 3,220 ft. Total Depth 3,220 ft  
Packer Depth 3,168 ft. Size 6 3/4 in. Packer Depth \_\_\_\_\_ ft. Size \_\_\_\_\_ in.  
Packer Depth 3,173 ft. Size 6 3/4 in. Packer Depth \_\_\_\_\_ ft. Size \_\_\_\_\_ in.  
Depth of Selective Zone Set \_\_\_\_\_ ft.

Top Recorder Depth (Inside) \_\_\_\_\_ ft. Recorder Number 30046 Cap. 6,000 psi.  
Bottom Recorder Depth (Outside) \_\_\_\_\_ ft. Recorder Number 11073 Cap. 4,000 psi.  
Below Straddle Recorder Depth \_\_\_\_\_ ft. Recorder Number \_\_\_\_\_ Cap. \_\_\_\_\_ psi.

Drilling Contractor Petromark Drilling, LLC - Rig 2 Drill Collar Length 120 ft I.D. 2 1/4 in.  
Mud Type Chemical Viscosity 58 Weight Pipe Length \_\_\_\_\_ ft I.D. \_\_\_\_\_ in.  
Weight 9.3 Water Loss 9.2 cc. Drill Pipe Length 3,031 ft I.D. 3 1/2 in.  
Chlorides 4,000 P.P.M. Test Tool Length 22 ft Tool Size 3 1/2-IF in.  
Jars: Make Sterling Serial Number Not Run Anchor Length 16' perf. w/31' drill pipe Size 4 1/2-FH in.  
Did Well Flow? No Reversed Out No Surface Choke Size 1 in. Bottom Choke Size 5/8 in.  
Main Hole Size 7 7/8 in. Tool Joint Size 4 1/2-XH in.

Blow: 1st Open: Weak, 1/4 in. blow throughout. No blow back during shut-in.  
2nd Open: Very weak, 1/8 in. blow throughout. No blow back during shut-in.

Recovered 60 ft. of oil specked drilling mud = .295200 bbls.  
Recovered \_\_\_\_\_ ft. of \_\_\_\_\_  
Recovered \_\_\_\_\_ ft. of \_\_\_\_\_  
Recovered \_\_\_\_\_ ft. of \_\_\_\_\_  
Recovered \_\_\_\_\_ ft. of \_\_\_\_\_  
Recovered \_\_\_\_\_ ft. of \_\_\_\_\_

Remarks \_\_\_\_\_

Time Set Packer(s) 2:20 A.M. Time Started off Bottom 4:20 A.M. Maximum Temperature 102°  
Initial Hydrostatic Pressure.....(A) \_\_\_\_\_ 1521 P.S.I.  
Initial Flow Period.....Minutes 30 (B) \_\_\_\_\_ 22 P.S.I. to (C) \_\_\_\_\_ 36 P.S.I.  
Initial Closed In Period.....Minutes 30 (D) \_\_\_\_\_ 342 P.S.I.  
Final Flow Period.....Minutes 30 (E) \_\_\_\_\_ 40 P.S.I. to (F) \_\_\_\_\_ 47 P.S.I.  
Final Closed In Period.....Minutes 30 (G) \_\_\_\_\_ 263 P.S.I.  
Final Hydrostatic Pressure.....(H) \_\_\_\_\_ 1512 P.S.I.

## GENERAL INFORMATION

### Client Information:

Company: L D DRILLING INC

Contact: L D DAVIS

Phone: Fax: e-mail:

### Site Information:

Contact: KIM SHOEMAKER

Phone: Fax: e-mail:

### Well Information:

Name: KEITH 1-15

Operator: L D DRILLING INC

Location-Downhole:

Location-Surface: S15/19S/12W

### Test Information:

Company: DIAMOND TESTING

Representative: JOHN RIEDL

Supervisor: KIM SHOEMAKER

Test Type: DST #2 CONVENTIONAL

Job Number: D1216

Test Unit:

Start Date: 2012/09/22

Start Time: 01:00:00

End Date: 2012/09/22

End Time: 06:00:00

Report Date: 2012/09/22

Prepared By: JOHN RIEDL

### Remarks:

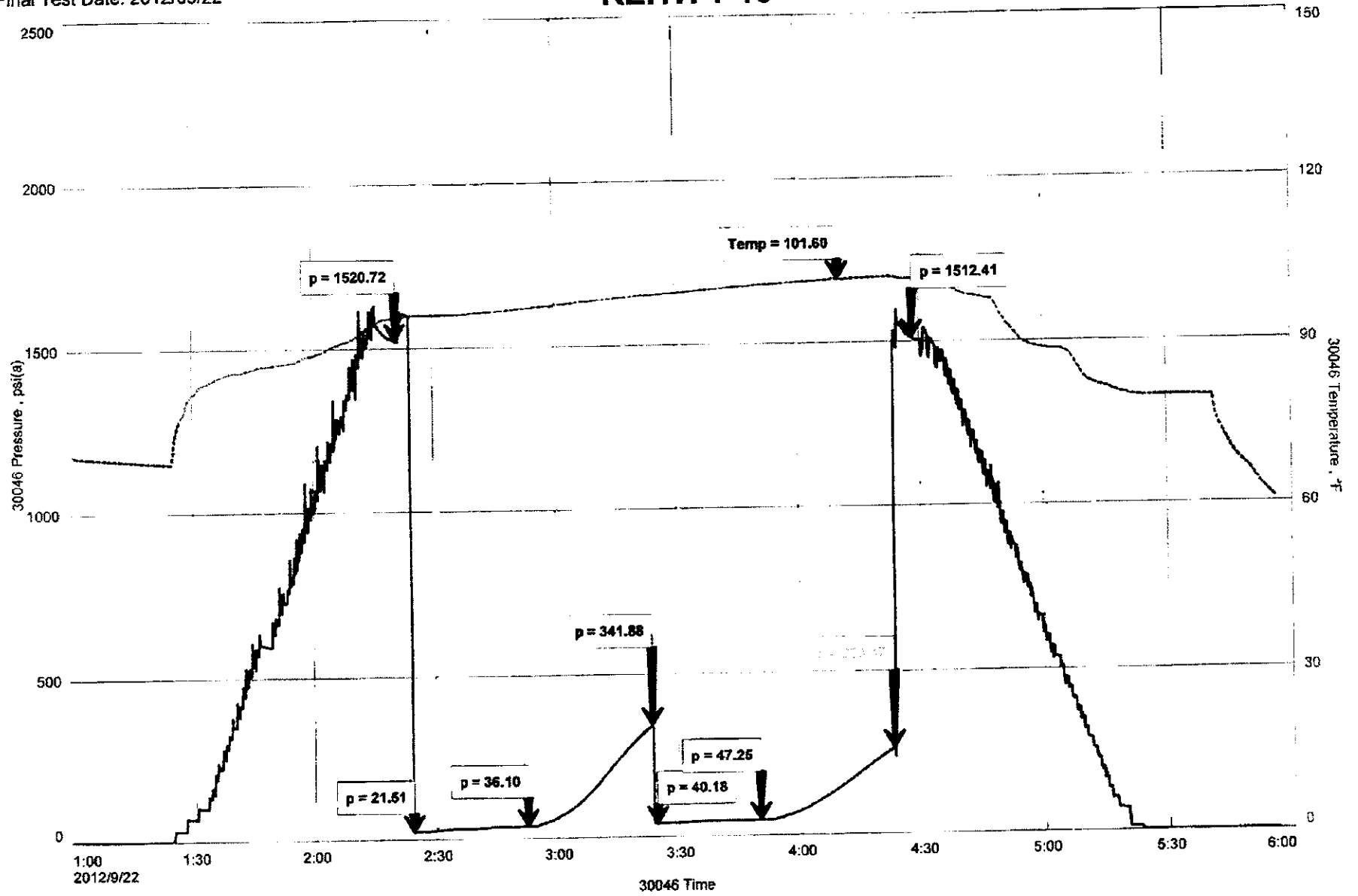
Qualified By: KIM SHOEMAKER

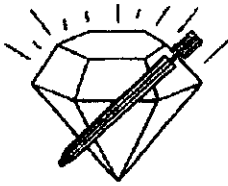
RECOVERY: 60' OIL SPECKED DRILLING MUD

L D DRILLING INC  
Start Test Date: 2012/09/22  
Final Test Date: 2012/09/22

# KEITH 1-15

KEITH 1-15  
Formation: LANSING E-F  
Job Number: D1216





**DIAMOND TESTING**

P.O. Box 157

**HOISINGTON, KANSAS 67544**

(620) 653-7550 • (800) 542-7313

STC/Keith1-15dst3

Company L. D. Drilling, Inc. Lease & Well No. Keith No 1-15  
 Elevation 1840 KB Formation Conglomerate Effective Pay \_\_\_\_\_ Ft. Ticket No. J3013  
 Date 9-23-12 Sec. 15 Twp. 19S Range 12W County Barton State Kansas  
 Test Approved By Kim B. Shoemaker Diamond Representative John C. Riedl

Formation Test No. 3 Interval Tested from 3,387 ft. to 3,430 ft. Total Depth 3,430 ft.  
 Packer Depth 3,382 ft. Size 6 3/4 in. Packer Depth \_\_\_\_\_ ft. Size \_\_\_\_\_ in.  
 Packer Depth 3,387 ft. Size 6 3/4 in. Packer Depth \_\_\_\_\_ ft. Size \_\_\_\_\_ in.  
 Depth of Selective Zone Set \_\_\_\_\_ ft.

Top Recorder Depth (Inside) 3,390 ft. Recorder Number 30046 Cap. 6,000 psi.  
 Bottom Recorder Depth (Outside) 3,427 ft. Recorder Number 11073 Cap. 4,000 psi.  
 Below Straddle Recorder Depth \_\_\_\_\_ ft. Recorder Number \_\_\_\_\_ Cap. \_\_\_\_\_ psi.

Drilling Contractor Petromark Drilling, LLC - Rig 2 Drill Collar Length 120 ft I.D. 2 1/4 in.  
 Mud Type Chemical Viscosity 50 Weight Pipe Length \_\_\_\_\_ ft I.D. \_\_\_\_\_ in.  
 Weight 9.1 Water Loss 9.4 cc. Drill Pipe Length 3,245 ft I.D. 3 1/2 in.  
 Chlorides 5,000 P.P.M. Test Tool Length 22 ft Tool Size 3 1/2-IF in.  
 Jars: Make Sterling Serial Number Not Run Anchor Length 12' perf. w/31' drill pipe Size 4 1/2-FH in.  
 Did Well Flow? No Reversed Out No Surface Choke Size 1 in. Bottom Choke Size 5/8 in.  
 Main Hole Size 7 7/8 in. Tool Joint Size 4 1/2-XH in.

Blow: 1st Open: Good, 7 in. blow. No blow back during shut-in.

2nd Open: Fair, 5 in. blow. No blow back during shut-in.

Recovered 5 ft. of free oil = .071150 bbls.  
 Recovered 280 ft. of muddy water = 2.867200 bbls. (Grind out: 80%-water; 20%-mud) Chlorides: 26,000 Ppm  
 Recovered 285 ft. of TOTAL FLUID = 2.938350 bbls.  
 Recovered \_\_\_\_\_ ft. of \_\_\_\_\_  
 Recovered \_\_\_\_\_ ft. of \_\_\_\_\_  
 Recovered \_\_\_\_\_ ft. of \_\_\_\_\_  
 Remarks \_\_\_\_\_

Time Set Packer(s) 4:20 A.M. Time Started off Bottom 7:20 A.M. Maximum Temperature 112°  
 Initial Hydrostatic Pressure.....(A) 1654 P.S.I.  
 Initial Flow Period.....Minutes 30 (B) 24 P.S.I. to (C) 96 P.S.I.  
 Initial Closed In Period.....Minutes 45 (D) 387 P.S.I.  
 Final Flow Period.....Minutes 45 (E) 98 P.S.I. to (F) 147 P.S.I.  
 Final Closed In Period.....Minutes 60 (G) 375 P.S.I.  
 Final Hydrostatic Pressure.....(H) 1631 P.S.I.

## GENERAL INFORMATION

### Client Information:

Company: L D DRILLING INC

Contact: L D DAVIS

Phone: Fax: e-mail:

### Site Information:

Contact: KIM SHOEMAKER

Phone: Fax: e-mail:

### Well Information:

Name: KEITH 1-15

Operator: L D DRILLING INC

Location-Downhole:

Location-Surface: S15/19S/12W

### Test Information:

Company: DIAMOND TESTING

Representative: JOHN RIEDL

Supervisor: KIM SHOEMAKER

Test Type: DST #3 COVENTIONAL

Job Number: D1217

Test Unit:

Start Date: 2012/09/23

Start Time: 02:30:00

End Date: 2012/09/23

End Time: 09:15:00

Report Date: 2012/09/23

Prepared By: JOHN RIEDL

### Remarks:

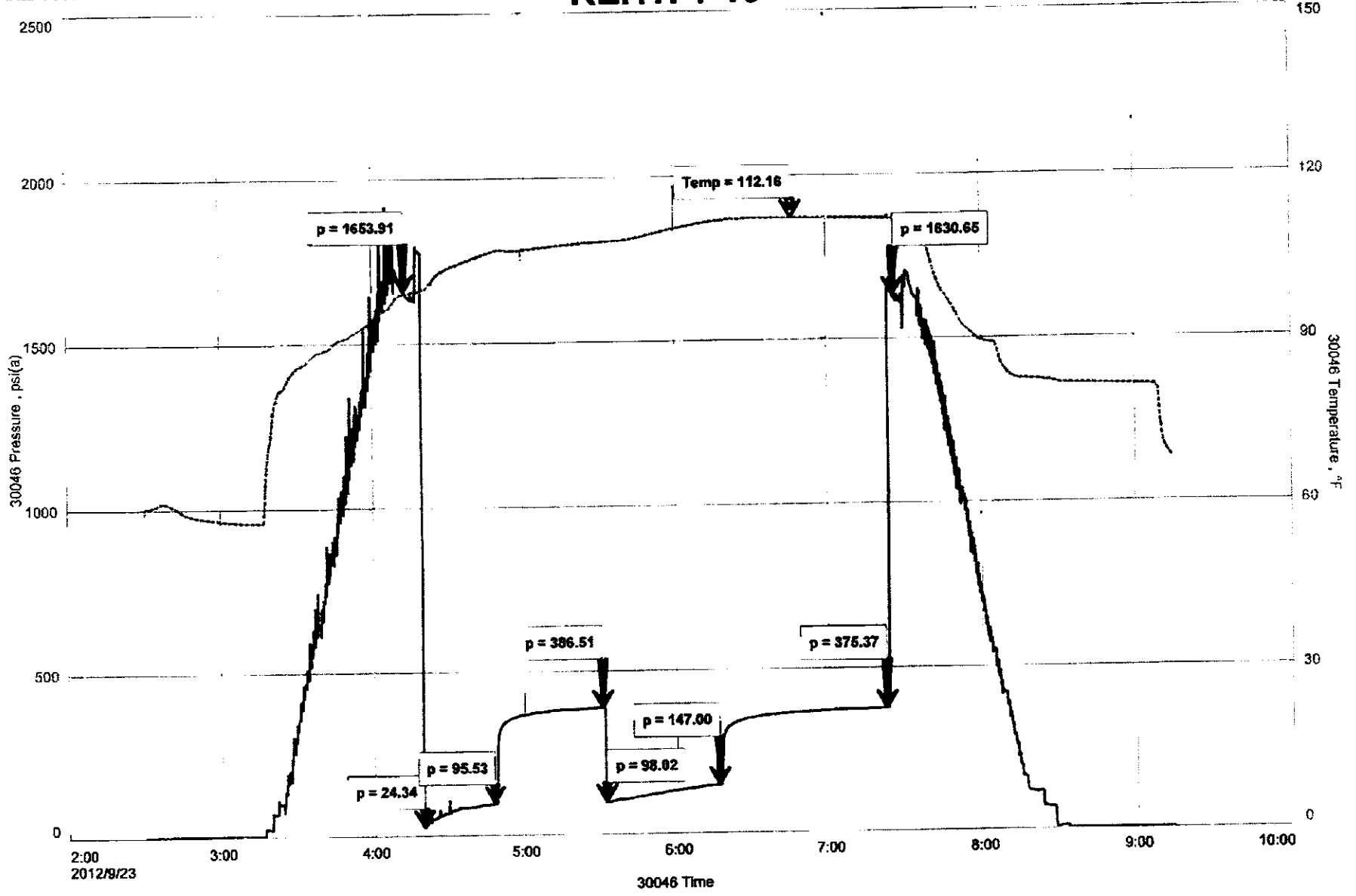
Qualified By: KIM SHOEMAKER

RECOVERY: 5' FREE OIL, 280' MUDDY WATER

L D DRILLING INC  
Start Test Date: 2012/09/23  
Final Test Date: 2012/09/23

KEITH 1-15  
Formation: CONGLOMERATE  
Job Number: D1217

# KEITH 1-15



# KIM B. SHOEMAKER

CONSULTING GEOLOGIST  
316-684-9709 \* WICHITA, KS

## GEOLOGIST'S REPORT

DRILLING TIME AND SAMPLE LOG

|   |                             |
|---|-----------------------------|
| COMPANY <u>L. D. DRILLING, INC.</u>         | ELEVATIONS                  |
| LEASE # <u>L-16</u> <u>SEITH</u>            | KB <u>1840</u>              |
| FIELD <u>CHYENNE STAN</u>                   | DF _____                    |
| LOCATION <u>1644' FR. 4-1656' EEL</u>       | GL <u>1835</u>              |
| SEC <u>15</u> TWP <u>19s</u> RGE <u>12w</u> | Measurements Are All        |
| COUNTY <u>BARTON</u> STATE <u>KANSAS</u>    | From <u>1840 KB</u>         |
| CONTRACTOR <u>PETROMARK DRILLING RIG 2</u>  | CASING                      |
| SPHD <u>9-17-12</u> <u>9-23-12</u>          | SURFACE <u>8 3/8 @ 389'</u> |
| RTD <u>3430</u>                             | PRODUCTION _____            |
| MUD UP <u>2750</u> <u>CHEMICAL</u>          | ELECTRICAL SURVEYS          |
|   | <u>None</u>                 |

SAMPLES SAVED FROM 2800 TO 3430

DRILLING TIME KEPT FROM 2600 TO 3430

SAMPLES EXAMINED FROM 2800 TO 3430

GEOLOGICAL SUPERVISION FROM 3000 TO 3430

GEOLOGIST ON WELL KIM B. SHOEMAKER

| FORMATION TOPS  | LOG | SAMPLES   |
|-----------------|-----|-----------|
| ANHYDRITE       |     | 473-1167  |
| TOBEKA          |     | 2666-2876 |
| ARROWHEAD       |     | 3010-1170 |
| BROWN LIMESTONE |     | 3123-1283 |
| LANSING         |     | 3140-1300 |
| B/KC            |     | 3321-1551 |
| CONG. CHEST     |     | 3416-1576 |
| RCD             |     | 3430-1590 |



REMARKS

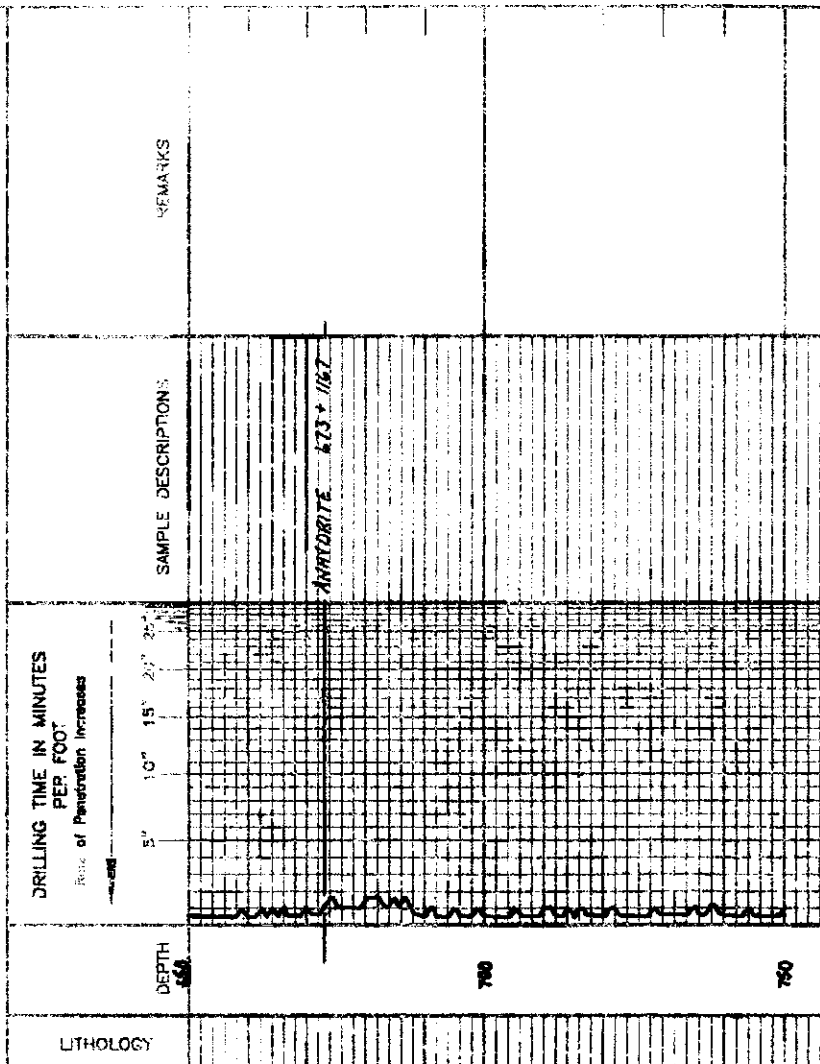
9-17-12 - 5:00A  
9-18 @ 389'  
9-20 @ 1508'  
9-21 @ 2653'  
9-21 @ 3164'  
9-22 @ 3310'  
9-23 @ 3430'

API - 15 - 009 - 24766

LEGEND

- Anhydrite
- Salt
- Sandstone
- Shale
- Coarse sandstone
- Chert
- Dolomite

SHOED1-05



DRILLING TIME IN MINUTES  
Rate of Penetration Increases

DEPTH  
5' 10' 15' 20' 25'

REMARKS

SAMPLE DESCRIPTIONS

LITHOLOGY

750

750

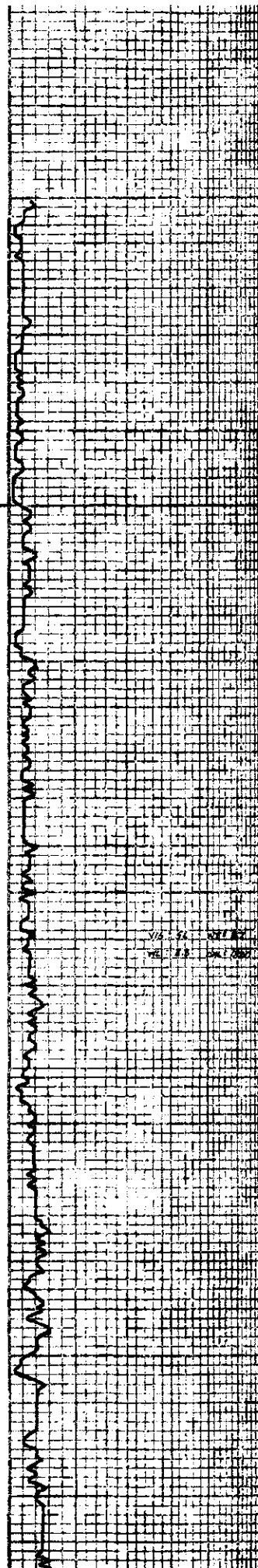




2600

2700

2800



TOPEKA 266-876

NO. 11. 266-876  
NO. 12. 266-876

Sample 100 lagged

15. 266-876, 266-876, 266-876

26. 266-876

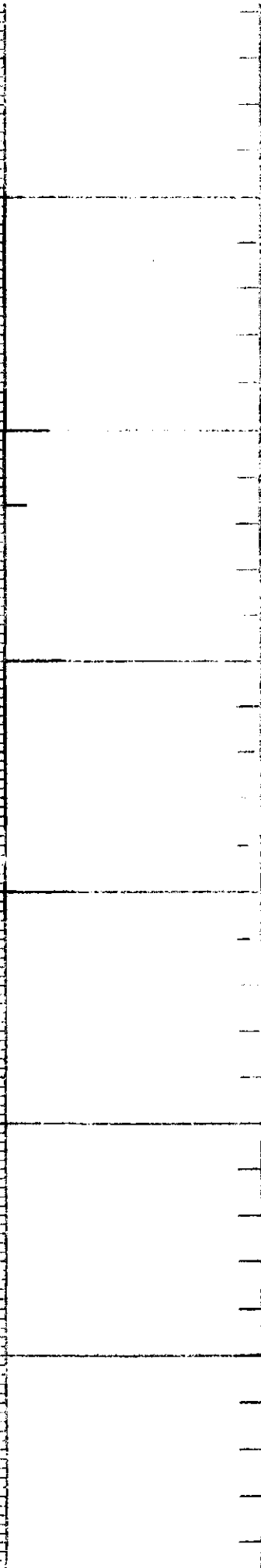
26. 266-876

26. 266-876

26. 266-876

26. 266-876, 266-876

26. 266-876





2900  
3000  
3100  
3200

Sh. G. ls.  
11. T. G. Foss. of D.R. Foss.  
Sh. G. ls.  
12. G. ls. Sh. of D.R. Foss.  
13. T. G. Foss.  
14. G. ls. Sh. of D.R. Foss.  
15. G. ls. Sh. of D.R. Foss.  
16. G. ls. Sh. of D.R. Foss.  
17. G. ls. Sh. of D.R. Foss.  
18. G. ls. Sh. of D.R. Foss.  
19. G. ls. Sh. of D.R. Foss.  
20. G. ls. Sh. of D.R. Foss.  
21. G. ls. Sh. of D.R. Foss.  
22. G. ls. Sh. of D.R. Foss.  
23. G. ls. Sh. of D.R. Foss.  
24. G. ls. Sh. of D.R. Foss.  
25. G. ls. Sh. of D.R. Foss.  
26. G. ls. Sh. of D.R. Foss.  
27. G. ls. Sh. of D.R. Foss.  
28. G. ls. Sh. of D.R. Foss.  
29. G. ls. Sh. of D.R. Foss.  
30. G. ls. Sh. of D.R. Foss.  
31. G. ls. Sh. of D.R. Foss.  
32. G. ls. Sh. of D.R. Foss.  
33. G. ls. Sh. of D.R. Foss.  
34. G. ls. Sh. of D.R. Foss.  
35. G. ls. Sh. of D.R. Foss.  
36. G. ls. Sh. of D.R. Foss.  
37. G. ls. Sh. of D.R. Foss.  
38. G. ls. Sh. of D.R. Foss.  
39. G. ls. Sh. of D.R. Foss.  
40. G. ls. Sh. of D.R. Foss.  
41. G. ls. Sh. of D.R. Foss.  
42. G. ls. Sh. of D.R. Foss.  
43. G. ls. Sh. of D.R. Foss.  
44. G. ls. Sh. of D.R. Foss.  
45. G. ls. Sh. of D.R. Foss.  
46. G. ls. Sh. of D.R. Foss.  
47. G. ls. Sh. of D.R. Foss.  
48. G. ls. Sh. of D.R. Foss.  
49. G. ls. Sh. of D.R. Foss.  
50. G. ls. Sh. of D.R. Foss.

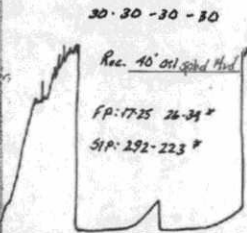
TORONTO  
DOUGLAS

HEEBNER 3010-1170  
Sh. G. ls.

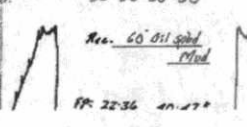
BROWN LIME 3123-1283  
Sh. G. ls.

LANSING 3140-1300  
Sh. G. ls.

DST (1) 3144-3175  
15' Open: Blow down 4' and 25 min.  
2' Open: " 4' and 5 min.



DST (2) 3173-3220  
15' Open: 1 1/2" Thru/out  
2' Open: 1/2" "



WIS: 58  
WT: 283  
V: 102  
CNO: 4000

DST (1)

DST (2)

