



KANSAS CORPORATION COMMISSION 1099694
OIL & GAS CONSERVATION DIVISION

Form ACO-1
June 2009
Form Must Be Typed
Form must be Signed
All blanks must be Filled

WELL COMPLETION FORM
WELL HISTORY - DESCRIPTION OF WELL & LEASE

OPERATOR: License # 34357
Name: Atlas Operating LLC
Address 1: 15603 Kuykendahl, Ste 200
Address 2: _____
City: HOUSTON State: TX Zip: 77090 + _____
Contact Person: zafar ullah
Phone: (281) 893-9400
CONTRACTOR: License # 5822
Name: Val Energy, Inc.
Wellsite Geologist: Ryan Seib
Purchaser: _____

Designate Type of Completion:

- New Well Re-Entry Workover
- Oil WSW SWD SLOW
- Gas D&A ENHR SIGW
- OG GSW Temp. Abd.
- CM (Coal Bed Methane)
- Cathodic Other (Core, Expl., etc.): _____

If Workover/Re-entry: Old Well Info as follows:

Operator: _____
Well Name: _____
Original Comp. Date: _____ Original Total Depth: _____

Deepening Re-perf. Conv. to ENHR Conv. to SWD

Conv. to GSW

Plug Back: _____ Plug Back Total Depth _____

Commingled Permit #: _____

Dual Completion Permit #: _____

SWD Permit #: _____

ENHR Permit #: _____

GSW Permit #: _____

<u>02/28/2012</u>	<u>03/05/2012</u>	<u>03/19/2012</u>
Spud Date or Recompletion Date	Date Reached TD	Completion Date or Recompletion Date

API No. 15 - 15-055-22108-00-00
Spot Description: _____
SE SE NE Sec. 20 Twp. 22 S. R. 33 East West
2310 Feet from North / South Line of Section
330 Feet from East / West Line of Section

Footages Calculated from Nearest Outside Section Corner:

- NE NW SE SW

County: Finney
Lease Name: Garden City Well #: 15-20
Field Name: Damme
Producing Formation: St Louis
Elevation: Ground: 2886 Kelly Bushing: 2898
Total Depth: 4880 Plug Back Total Depth: _____
Amount of Surface Pipe Set and Cemented at: 340 Feet
Multiple Stage Cementing Collar Used? Yes No
If yes, show depth set: 2665 Feet
If Alternate II completion, cement circulated from: 4870
feet depth to: 0 w/ 1000 sx cmt.

Drilling Fluid Management Plan

(Data must be collected from the Reserve Pit)

Chloride content: 0 ppm Fluid volume: 0 bbls
Dewatering method used: Evaporated
Location of fluid disposal if hauled offsite: _____
Operator Name: _____
Lease Name: _____ License #: _____
Quarter _____ Sec. _____ Twp. _____ S. R. _____ East West
County: _____ Permit #: _____

AFFIDAVIT

I am the affiant and I hereby certify that all requirements of the statutes, rules and regulations promulgated to regulate the oil and gas industry have been fully complied with and the statements herein are complete and correct to the best of my knowledge.

Submitted Electronically

KCC Office Use ONLY

- Letter of Confidentiality Received
Date: _____
- Confidential Release Date: _____
- Wireline Log Received
- Geologist Report Received
- UIC Distribution
- ALT I II III Approved by: Deanna Garrison Date: 11/07/2012



1099694

Operator Name: Atlas Operating LLC Lease Name: Garden City Well #: 15-20
Sec. 20 Twp. 22 S. R. 33 East West County: Finney

INSTRUCTIONS: Show important tops and base of formations penetrated. Detail all cores. Report all final copies of drill stems tests giving interval tested, time tool open and closed, flowing and shut-in pressures, whether shut-in pressure reached static level, hydrostatic pressures, bottom hole temperature, fluid recovery, and flow rates if gas to surface test, along with final chart(s). Attach extra sheet if more space is needed. Attach complete copy of all Electric Wire-line Logs surveyed. Attach final geological well site report.

Drill Stem Tests Taken (Attach Additional Sheets) Samples Sent to Geological Survey Cores Taken Electric Log Run Electric Log Submitted Electronically List All E. Logs Run: Attached

CASING RECORD Table with columns: Purpose of String, Size Hole Drilled, Size Casing Set (In O.D.), Weight Lbs. / Ft., Setting Depth, Type of Cement, # Sacks Used, Type and Percent Additives

ADDITIONAL CEMENTING / SQUEEZE RECORD Table with columns: Purpose, Depth Top Bottom, Type of Cement, # Sacks Used, Type and Percent Additives

PERFORATION RECORD - Bridge Plugs Set/Type Table with columns: Shots Per Foot, Specify Footage of Each Interval Perforated, Acid, Fracture, Shot, Cement Squeeze Record (Amount and Kind of Material Used), Depth

TUBING RECORD: Date of First, Resumed Production, SWD or ENHR. Producing Method: Estimated Production Per 24 Hours

DISPOSITION OF GAS: METHOD OF COMPLETION: PRODUCTION INTERVAL:

Form	ACO1 - Well Completion
Operator	Atlas Operating LLC
Well Name	Garden City 15-20
Doc ID	1099694

All Electric Logs Run

Dual Induction
CN-CDL
Micro Log
CBL



CONSOLIDATED
Oil Well Services, LLC

REMITTO
Consolidated Oil Well Services, LLC
Dept. 970
P.O. Box 4346
Houston, TX 77210-4346

MAIN OFFICE
P.O. Box 884
Chanute, KS 66720
620/431-9210 • 1-800/467-8678
Fax 620/431-0012

INVOICE

Invoice # 248095

Invoice Date: 02/29/2012 Terms: 10/10/30, n/30

Page 1

ATLAS OPERATING, LLC
15603 KUYKENDAHL, SUITE 200
HOUSTON TX 77090-3655
(281) 893-9400

GARDEN CITY 15-20
33863
20-22-33
02-28-2012
KS

Part Number	Description	Qty	Unit Price	Total
11048	CLASS "A" CEMENT (SALE)	250.00	17.6500	4412.50
1102	CALCIUM CHLORIDE (50#)	705.00	.8900	627.45
1118B	PREMIUM GEL / BENTONITE	470.00	.2500	117.50
4432	8 5/8" WOODEN PLUG	1.00	96.0000	96.00

Sublet Performed	Description	Total
9999-130	CASH DISCOUNT	-525.34
9999-130	CASH DISCOUNT	-256.24

Description	Hours	Unit Price	Total
399 CEMENT PUMP (SURFACE)	1.00	1085.00	1085.00
399 EQUIPMENT MILEAGE (ONE WAY)	60.00	5.00	300.00
566 TON MILEAGE DELIVERY	705.00	1.67	1177.35

~~16000~~ 160015
8 5/8"

Amount Due 8207.18 if paid after 03/30/2012

Parts:	5253.45	Freight:	.00	Tax:	352.24	AR	7386.46
Labor:	.00	Misc:	.00	Total:	7386.46		
Sublt:	-781.58	Supplies:	.00	Change:	.00		

Signed _____

Date _____

BARTLESVILLE, OK
918/338-0908

EL DORADO, KS
316/322-7022

EUREKA, KS
620/583-7884

PONCA CITY, OK
580/782-2303

OAKLEY, KS
785/672-2227

OTTAWA, KS
785/242-4044

THAYER, KS
620/639-5288

GILLETTE, WY
307/688-4814



CONSOLIDATED
Oil Well Services, LLC



TICKET NUMBER 33863

LOCATION Oakley

FOREMAN Kelly Gabel

PO Box 884, Chanute, KS 66720
620-431-9210 or 800-467-9678

FIELD TICKET & TREATMENT REPORT

CEMENT

DATE	CUSTOMER #	WELL NAME & NUMBER	SECTION	TOWNSHIP	RANGE	COUNTY	
2-28-12	1226	Garden City 15-20	20	22	33	Finney	
CUSTOMER		MAILING ADDRESS		TRUCK #	DRIVER	TRUCK #	DRIVER
Atlas Oper.		N+O Bafkw West to Chemist Rd 1/2 S W: 1140		399	Daman M		
CITY	STATE	ZIP CODE		566	Robby S		

JOB TYPE Surface HOLE SIZE 12 1/4 HOLE DEPTH 344 CASING SIZE & WEIGHT 8 5/8 242
 CASING DEPTH 344 DRILL PIPE _____ TUBING _____ OTHER _____
 SLURRY WEIGHT 14 SLURRY VOL _____ WATER gal/ck _____ CEMENT LEFT IN CASING 20'
 DISPLACEMENT 20 1/2 DISPLACEMENT PSI _____ MIX PSI _____ RATE _____

REMARKS: 5:45 am meeting. Rigged up on Valdrilling Rig #7, hooked up to circulate mixed 250 sks com 30cc + 200 gal, shut down, released plug, displaced with 20 1/2 bbl water. shut in, Dashed out pump lines, Rigged down at location

Cement did circulate

Approx 6 bbl top in

Thank You Kelly & Crew

ACCOUNT CODE	QUANTITY or UNITS	DESCRIPTION of SERVICES or PRODUCT	UNIT PRICE	TOTAL
54015	1	PUMP CHARGE	1085.00	1085.00
5406	60	MILEAGE	5.00	300.00
11045	250 sks	Class A cement	17.65	4412.50
1102	205#	Calcium chloride	.89	182.45
11183	420#	Bentonite	.25	105.00
5407A	11.75	Ton Mileage delivery	12.2	1432.50
4432	1	8 5/8 Wooden Plug	96.00	96.00
				7915.45
				281.00
				2034.33
				24809
			SALES TAX	352.24
			ESTIMATED TOTAL	7386.46

Form 5787

7:00 PM AUTHORIZATION [Signature]

TITLE Foreman

DATE 2-28-12

I acknowledge that the payment terms, unless specifically amended in writing on the front of the form or in the customer's records, at our office, and conditions of service on the back of this form are in effect for services identified on this form.



CONSOLIDATED
Oil Well Services, LLC

REMIT TO
Consolidated Oil Well Services, LLC
Dept. 970
P.O. Box 4346
Houston, TX 77210-4346

MAIN OFFICE
P.O. Box 884
Chanute, KS 66720
620/431-9210 • 1-800/467-8876
Fax 620/431-0012

INVOICE

Invoice # 248263

Invoice Date: 03/09/2012 Terms: 10/10/30,n/30

Page 1

ATLAS OPERATING, LLC
15603 KUYKENDAHL, SUITE 200
HOUSTON TX 77090-3655
(281) 893-9400

GARDEN CITY 15-20
33929
20-22-33W
3-6-2012
KS

Part Number	Description	Qty	Unit Price	Total
1131	60/40 POZ MIX	775.00	15.1000	11702.50
1126	OIL WELL CEMENT	200.00	22.5500	4510.00
1104CS	CLASS "C" CEMENT (SALES)	150.00	18.7000	2805.00
1118B	PREMIUM GEL / BENTONITE	5336.00	.2500	1334.00
1110A	KOL SEAL (50# BAG)	4875.00	.5600	2730.00
1107	FLO-SEAL (25#)	194.00	2.8200	547.08
4161	FLOAT SHOE 4 1/2" AFU	1.00	342.0000	342.00
4283	DV TOOL W/ LATCH DOWN	1.00	3850.0000	3850.00
4129	CENTRALIZER 4 1/2"	10.00	46.0000	460.00
4103	CEMENT BASKET 4 1/2"	3.00	261.0000	783.00

Sublet Performed	Description	Total
9999-130	CASH DISCOUNT <u>Cement</u>	-2906.36
9999-130	CASH DISCOUNT	-830.78

Description	Hours	Unit Price	Total
456 SINGLE PUMP	1.00	3020.00	3020.00
528 EQUIPMENT MILEAGE (ONE WAY)	60.00	5.00	300.00
566 TON MILEAGE DELIVERY DATE APPROVED	1.00	4987.80	4987.80

4 1/2"

Amount Due 39536.63 if paid after 04/08/2012

Parts:	29063.58	Freight:	.00	Tax:	1948.73	AR	35582.97
Labor:	.00	Misc:	.00	Total:	35582.97		
Sublt:	-3737.14	Supplies:	.00	Change:	.00		

Signed _____

Date _____

BARTLESVILLE, OK
918/338-8888

EL DORADO, KS
318/322-7022

EUREKA, KS
620/583-7864

PONCA CITY, OK
580/782-2303

OAKLEY, KS
785/672-2227

OTTAWA, KS
785/242-4044

THAYER, KS
620/838-5289

GILLETTE, WY
307/686-4814



CONSOLIDATED
Oil Well Services, LLC



TICKET NUMBER 33929
LOCATION Oakley Ks
FOREMAN Fuzz Y
miles 5

PO Box 884, Chanute, KS 66720
820-431-8210 or 800-467-8676

FIELD TICKET & TREATMENT REPORT
CEMENT

Ks

DATE	CUSTOMER #	WELL NAME & NUMBER	SECTION	TOWNSHIP	RANGE	COUNTY
3-6-12	1226	Garden City 16-20	20	22	33W	Finney
CUSTOMER Atlas Operating LLC			Barlow			
MAILING ADDRESS			Big Lower Rd 5			
CITY			16-1145			
STATE			4722			
ZIP CODE			TRUCK#			
			DRIVER			
			TRUCK#			
			DRIVER			
			TRUCK#			
			DRIVER			

JOB TYPE 2-stage HOLE SIZE 7 7/8 HOLE DEPTH 4880' CASING SIZE & WEIGHT 4 1/2 10.5
CASING DEPTH 4972' DRILL PIPE _____ TUBING _____ OTHER DU Tool @ 2705'
SLURRY WEIGHT 13.8-12.5 SLURRY VOL. 1.42-1.9 WATER gal/stk 6.7-10.8 CEMENT LEFT IN CASING 2.132
DISPLACEMENT 77.13 DISPLACEMENT PSI _____ MIX PSI _____ RATE _____

REMARKS: Safety meeting per UAI #7. Float Equip. Cent 1, 2, 3, 5, 7, 12, 17, 23, 33, 43. Baskets 16, 49, 74. DU Tool #52. Acup and size 1/2" Pump 50% water. Mix 200#s 60/40 99% oil, 5% Kolsal 1 1/4" Class C @ 12.5. Mix 200#s OWC 5% Kolsal @ 13.5. Wash pump lines. Drop plus and displace 34 water + 43 1/2 mud. 700' lift - 1400' land. Drop DU Bomb with 20mm open tool @ 1000' and circulate 2 hrs. Pump 50% water. Mix 30% Kolsal, 20% M.H. Mix 525#s 60/40 99% oil, 5% Kolsal, 1 1/4" Class C @ 12.5. Tail with 150#s Class C next @ 14.8. Wash pump lines. Drop plus and displace 43 98% water. 700' lift Class DU Tool @ 1500'. Cement did circulate approx 3000 to pit.

Thanks Fuzz Y crew

ACCOUNT CODE	QUANTITY or UNITS	DESCRIPTION of SERVICES or PRODUCT	UNIT PRICE	TOTAL
54012	1	PUMP CHARGE	3020.00	3020.00
5406	60	MILEAGE	5.00	300.00
5407A	49.78 tons	Ton mileage delivery	1.27	4987.26
1131	775 #s	60/40 pos	15.10	11,702.50
1126	200 #s	OWC	22.55	4510.00
11045	190 #s	Class 'C'	18.20	2805.00
1118 B	5336 #	Bentonite	1.25	1334.25
1110 A	4875 #	Kolsal	1.56	2730.00
1107	194 #	Class C	2.82	547.08
4161	1	4 1/2 AEU Float shoe	342.00	342.00
4283	1	4 1/2 DU Tool w/ lattdown	3850.00	3850.00
4129	10	4 1/2 centralizers	46.00	460.00
4103	3	Baskets - 4 1/2	261.00	783.00
		subtotal		37,371.38
		less 10% disc		3737.14
		As per Bid subtotal		33634.24
		248263	SALES TAX	1947.23
			ESTIMATED TOTAL	35582.97

Form 8737

AUTHORIZATION [Signature] TITLE Foreman DATE 3-7-12

I acknowledge that the payment terms, unless specifically amended in writing on the front of the form or in the customer's account records, at our office, and conditions of service on the back of this form are in effect for services identified on this form.

Ryan Seib
Petroleum Geologist

815 S. Topoka Ness City, KS 67560 (785) 798-5398

GEOLOGIST'S REPORT
DRILLING TIME AND SAMPLE LOG

OPERATOR Atlas Operating LLC
 LEASE Green City 15-20
 FIELD Davine
 LOCATION 2301' FEEL + 330' FEEL
 SEC. 20 TWP. 22 S RGE. 330
 COUNTY Finney STATE Kansas

CONTRACTOR KL Energy CORR. 2-5-12
 R/O 3700' LOG TO 610'
 SAMPLES SHED FROM 3700' TO 610'
 DRILLING TIME NEXT FROM 3600' TO 610'
 SAMPLES OBTAINED FROM 3700' TO 610'
 GEOLOGICAL SUPERVISION FROM 3700' TO 610'
 LOG UP 3700' TYPE WD Chemical
 NO. 145-AST-23120

ELEVATION 2858'
 KE 2858'
 DF 2858'
 MAGNETIC TO ANGLE FROM KB

CASING REQUIRED 2572 to 330'
 PRODUCTION 1 1/2"

WELL LOG SURVEYS CNO, DTL, Micro

FORMATION	TOP	LOG	DEPTH	TYPE	SWATH	DIAMETER	STRUCTURE
Shale	3700'	610'	3090'	WD	6 1/2"	10 1/2"	
Shale	3600'	610'	2990'	WD	6 1/2"	10 1/2"	
Shale	3500'	610'	2890'	WD	6 1/2"	10 1/2"	
Shale	3400'	610'	2790'	WD	6 1/2"	10 1/2"	
Shale	3300'	610'	2690'	WD	6 1/2"	10 1/2"	
Shale	3200'	610'	2590'	WD	6 1/2"	10 1/2"	
Shale	3100'	610'	2490'	WD	6 1/2"	10 1/2"	
Shale	3000'	610'	2390'	WD	6 1/2"	10 1/2"	
Shale	2900'	610'	2290'	WD	6 1/2"	10 1/2"	
Shale	2800'	610'	2190'	WD	6 1/2"	10 1/2"	
Shale	2700'	610'	2090'	WD	6 1/2"	10 1/2"	
Shale	2600'	610'	1990'	WD	6 1/2"	10 1/2"	
Shale	2500'	610'	1890'	WD	6 1/2"	10 1/2"	
Shale	2400'	610'	1790'	WD	6 1/2"	10 1/2"	
Shale	2300'	610'	1690'	WD	6 1/2"	10 1/2"	
Shale	2200'	610'	1590'	WD	6 1/2"	10 1/2"	
Shale	2100'	610'	1490'	WD	6 1/2"	10 1/2"	
Shale	2000'	610'	1390'	WD	6 1/2"	10 1/2"	
Shale	1900'	610'	1290'	WD	6 1/2"	10 1/2"	
Shale	1800'	610'	1190'	WD	6 1/2"	10 1/2"	
Shale	1700'	610'	1090'	WD	6 1/2"	10 1/2"	
Shale	1600'	610'	990'	WD	6 1/2"	10 1/2"	
Shale	1500'	610'	890'	WD	6 1/2"	10 1/2"	
Shale	1400'	610'	790'	WD	6 1/2"	10 1/2"	
Shale	1300'	610'	690'	WD	6 1/2"	10 1/2"	
Shale	1200'	610'	590'	WD	6 1/2"	10 1/2"	
Shale	1100'	610'	490'	WD	6 1/2"	10 1/2"	
Shale	1000'	610'	390'	WD	6 1/2"	10 1/2"	
Shale	900'	610'	290'	WD	6 1/2"	10 1/2"	
Shale	800'	610'	190'	WD	6 1/2"	10 1/2"	
Shale	700'	610'	90'	WD	6 1/2"	10 1/2"	
Shale	600'	610'	0'	WD	6 1/2"	10 1/2"	

REMARKS: 4 1/2" production casing was run to bottom with 100' of 2 1/2" casing

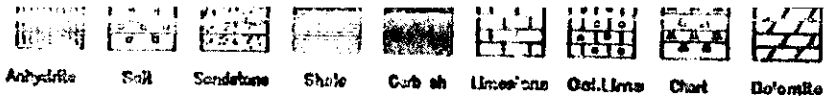
[Signature]

LEGEND

Anhydrite	Salt	Sandstone	Shale	Carbonate	Limestone	Coal/Lime	Clay	Dolomite

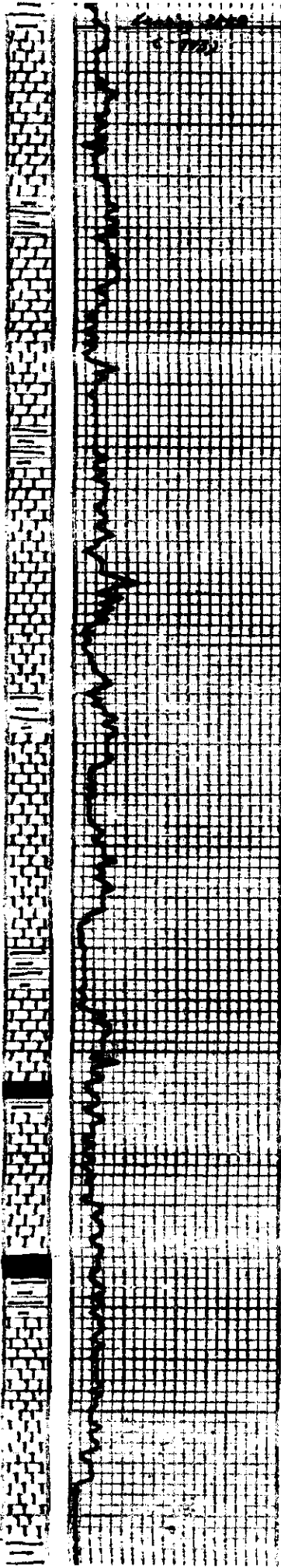
SCALE " = 100'

Logging	Drilling time in minutes	DEPTH	Sample Description	Remarks, Drill stem tests, etc.
		3600	<u>Shale</u> <u>2-27-11-330'</u> <u>2-28-11-330'</u> <u>2-29-11-330'</u> <u>2-30-11-330'</u> <u>2-31-11-330'</u> <u>2-32-11-330'</u> <u>2-33-11-330'</u> <u>2-34-11-330'</u> <u>2-35-11-330'</u> <u>2-36-11-330'</u>	



SCALE " = 100'

Lithology	Drilling time in minutes	DEPTH	Sample Description	Remarks, J&E stem tests, etc.
		3600	<p>1-2-18 2330'</p> <p>1-2-18 2330'</p> <p>1-2-18 2330'</p> <p>1-2-18 2330'</p> <p>1-2-18 2330'</p> <p>1-2-18 2330'</p> <p>1-2-18 2330'</p> <p>1-2-18 2330'</p>	
		50		
		3700	<p>1-2-18 2330'</p> <p>1-2-18 2330'</p> <p>1-2-18 2330'</p> <p>1-2-18 2330'</p> <p>1-2-18 2330'</p> <p>1-2-18 2330'</p> <p>1-2-18 2330'</p> <p>1-2-18 2330'</p>	
		50		
		3800	<p>1-2-18 2330'</p> <p>1-2-18 2330'</p> <p>1-2-18 2330'</p> <p>1-2-18 2330'</p> <p>1-2-18 2330'</p> <p>1-2-18 2330'</p> <p>1-2-18 2330'</p> <p>1-2-18 2330'</p>	
		50		
		3900	<p>1-2-18 2330'</p> <p>1-2-18 2330'</p> <p>1-2-18 2330'</p> <p>1-2-18 2330'</p> <p>1-2-18 2330'</p> <p>1-2-18 2330'</p> <p>1-2-18 2330'</p> <p>1-2-18 2330'</p>	
		50		
		4000	<p>1-2-18 2330'</p> <p>1-2-18 2330'</p> <p>1-2-18 2330'</p> <p>1-2-18 2330'</p> <p>1-2-18 2330'</p> <p>1-2-18 2330'</p> <p>1-2-18 2330'</p> <p>1-2-18 2330'</p>	
		50		



50

Handwritten notes in a cursive script, likely describing geological observations or measurements.

3900

Handwritten notes in a cursive script.

50

Handwritten notes in a cursive script.

4000

Handwritten notes in a cursive script.

Handwritten notes: Mud / 3944', UL-80A, RIR-83, UL-72, CL-1700, LCM-34

50

Handwritten notes in a cursive script.

Handwritten note: 15 unit gas kick

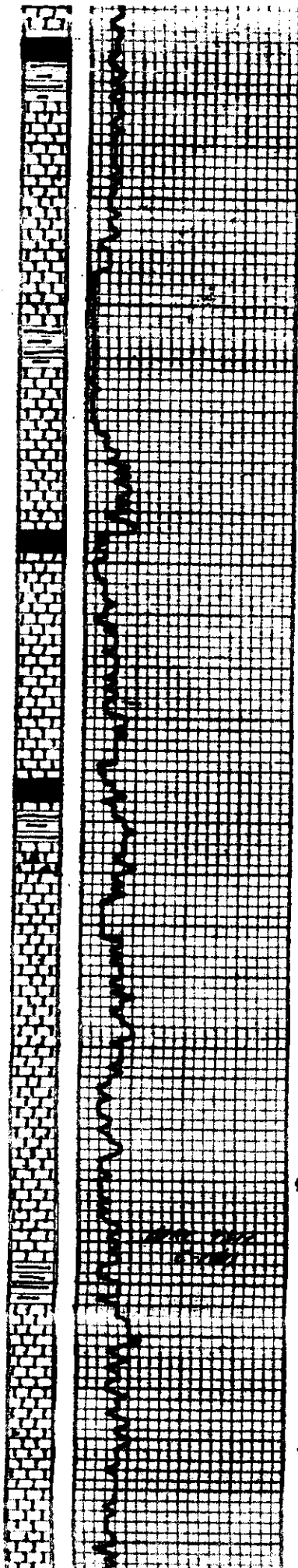
4100

Handwritten notes in a cursive script.

Handwritten note: 15 unit gas kick

Handwritten note: 10 unit gas kick

Handwritten notes in a cursive script at the bottom of the log.



4100

50

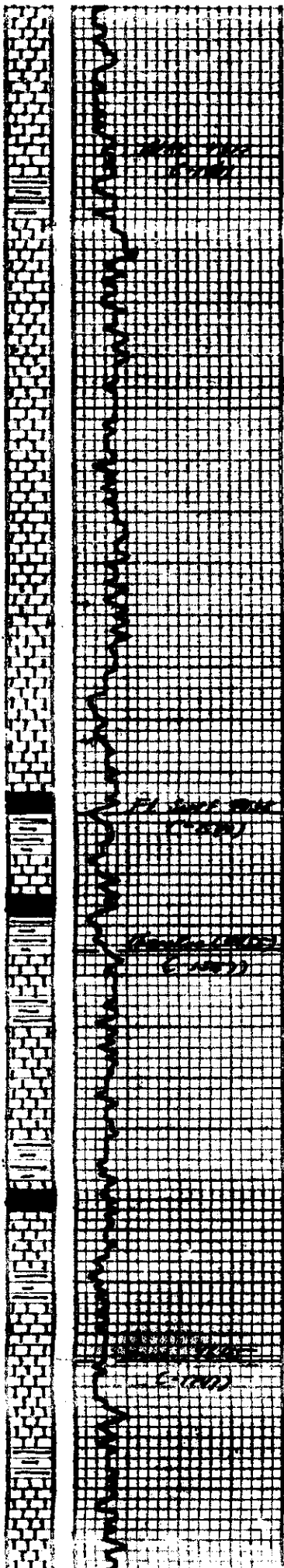
4200

50

4300

50

Shale, dark blue	
Shale, blue	15 unit gas kick
Shale, blue, dark blue, blue, green, blue, blue	10 unit gas kick
Shale, blue, dark blue, blue, blue, blue, blue, blue	
Shale, blue	
Shale, blue, dark blue, blue, blue, blue, blue, blue, blue	
Shale, blue	
Shale, blue, dark blue, blue, blue, blue, blue, blue, blue	
Shale, blue	5 unit gas kick
Shale, blue, dark blue, blue, blue, blue, blue, blue, blue	
Shale, blue	
Shale, blue, dark blue, blue, blue, blue, blue, blue, blue	
Shale, blue	Gas Detector Not Working
Shale, blue, dark blue, blue, blue, blue, blue, blue, blue	
Shale, blue	
Shale, blue, dark blue, blue, blue, blue, blue, blue, blue	
Shale, blue	Gas Detector Corrupted
Shale, blue, dark blue, blue, blue, blue, blue, blue, blue	
Shale, blue	
Shale, blue, dark blue, blue, blue, blue, blue, blue, blue	
Shale, blue	
Shale, blue, dark blue, blue, blue, blue, blue, blue, blue	
Shale, blue	
Shale, blue, dark blue, blue, blue, blue, blue, blue, blue	
Shale, blue	
Shale, blue, dark blue, blue, blue, blue, blue, blue, blue	
Shale, blue	



4300

50

4400

50

4500

50

Gas Deflector Connected

4300-4310 - 10' - 15' - 20' - 25' - 30' - 35' - 40' - 45' - 50' - 55' - 60' - 65' - 70' - 75' - 80' - 85' - 90' - 95' - 100'

4310-4320 - 10' - 15' - 20' - 25' - 30' - 35' - 40' - 45' - 50' - 55' - 60' - 65' - 70' - 75' - 80' - 85' - 90' - 95' - 100'

4320-4330 - 10' - 15' - 20' - 25' - 30' - 35' - 40' - 45' - 50' - 55' - 60' - 65' - 70' - 75' - 80' - 85' - 90' - 95' - 100'

4330-4340 - 10' - 15' - 20' - 25' - 30' - 35' - 40' - 45' - 50' - 55' - 60' - 65' - 70' - 75' - 80' - 85' - 90' - 95' - 100'

4340-4350 - 10' - 15' - 20' - 25' - 30' - 35' - 40' - 45' - 50' - 55' - 60' - 65' - 70' - 75' - 80' - 85' - 90' - 95' - 100'

4350-4360 - 10' - 15' - 20' - 25' - 30' - 35' - 40' - 45' - 50' - 55' - 60' - 65' - 70' - 75' - 80' - 85' - 90' - 95' - 100'

4360-4370 - 10' - 15' - 20' - 25' - 30' - 35' - 40' - 45' - 50' - 55' - 60' - 65' - 70' - 75' - 80' - 85' - 90' - 95' - 100'

4370-4380 - 10' - 15' - 20' - 25' - 30' - 35' - 40' - 45' - 50' - 55' - 60' - 65' - 70' - 75' - 80' - 85' - 90' - 95' - 100'

4380-4390 - 10' - 15' - 20' - 25' - 30' - 35' - 40' - 45' - 50' - 55' - 60' - 65' - 70' - 75' - 80' - 85' - 90' - 95' - 100'

4390-4400 - 10' - 15' - 20' - 25' - 30' - 35' - 40' - 45' - 50' - 55' - 60' - 65' - 70' - 75' - 80' - 85' - 90' - 95' - 100'

4400-4410 - 10' - 15' - 20' - 25' - 30' - 35' - 40' - 45' - 50' - 55' - 60' - 65' - 70' - 75' - 80' - 85' - 90' - 95' - 100'

4410-4420 - 10' - 15' - 20' - 25' - 30' - 35' - 40' - 45' - 50' - 55' - 60' - 65' - 70' - 75' - 80' - 85' - 90' - 95' - 100'

4420-4430 - 10' - 15' - 20' - 25' - 30' - 35' - 40' - 45' - 50' - 55' - 60' - 65' - 70' - 75' - 80' - 85' - 90' - 95' - 100'

4430-4440 - 10' - 15' - 20' - 25' - 30' - 35' - 40' - 45' - 50' - 55' - 60' - 65' - 70' - 75' - 80' - 85' - 90' - 95' - 100'

4440-4450 - 10' - 15' - 20' - 25' - 30' - 35' - 40' - 45' - 50' - 55' - 60' - 65' - 70' - 75' - 80' - 85' - 90' - 95' - 100'

4450-4460 - 10' - 15' - 20' - 25' - 30' - 35' - 40' - 45' - 50' - 55' - 60' - 65' - 70' - 75' - 80' - 85' - 90' - 95' - 100'

4460-4470 - 10' - 15' - 20' - 25' - 30' - 35' - 40' - 45' - 50' - 55' - 60' - 65' - 70' - 75' - 80' - 85' - 90' - 95' - 100'

4470-4480 - 10' - 15' - 20' - 25' - 30' - 35' - 40' - 45' - 50' - 55' - 60' - 65' - 70' - 75' - 80' - 85' - 90' - 95' - 100'

4480-4490 - 10' - 15' - 20' - 25' - 30' - 35' - 40' - 45' - 50' - 55' - 60' - 65' - 70' - 75' - 80' - 85' - 90' - 95' - 100'

4490-4500 - 10' - 15' - 20' - 25' - 30' - 35' - 40' - 45' - 50' - 55' - 60' - 65' - 70' - 75' - 80' - 85' - 90' - 95' - 100'

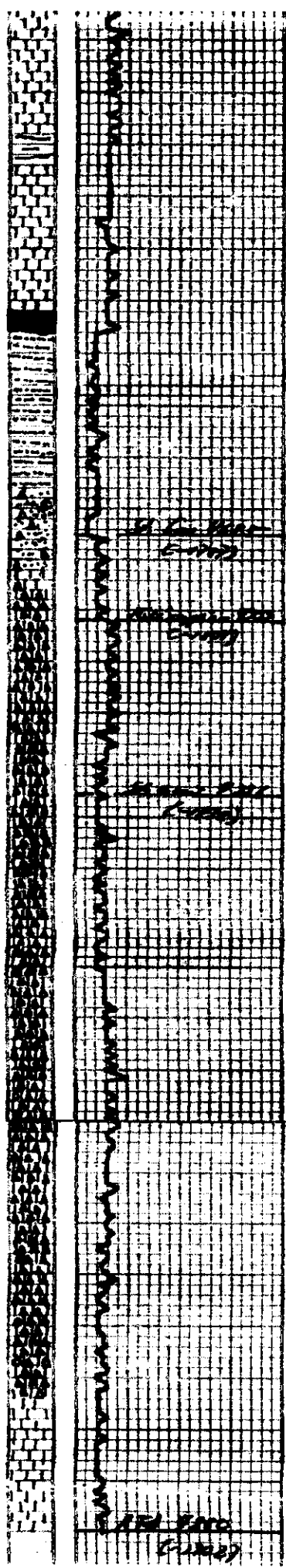
Gas Deflector Connected

60 units gas

Mud V @ 4420'
 WS-9.3
 RL-8.2
 WL-8.0
 CIL-1600
 LCA-40

60 units gas

10 units gas



4600

Handwritten notes in the top section of the grid, including 'The ...' and 'The ...'.

50

Handwritten notes in the middle section of the grid, including 'The ...' and 'The ...'.

60 unit gas N10E

4700

Handwritten notes in the lower middle section of the grid, including 'The ...' and 'The ...'.

60 unit gas N10E

Handwritten notes in the lower middle section of the grid, including 'The ...' and 'The ...'.

60 unit gas N10E

Handwritten notes in the lower middle section of the grid, including 'The ...' and 'The ...'.

60 unit gas N10E

Handwritten notes in the lower middle section of the grid, including 'The ...' and 'The ...'.

30 unit gas N10E

60 unit gas N10E

50

Handwritten notes in the lower section of the grid, including 'The ...' and 'The ...'.

60 unit gas

Handwritten notes in the lower section of the grid, including 'The ...' and 'The ...'.

30 unit gas

15 unit gas

4800

Handwritten notes in the bottom section of the grid, including 'The ...' and 'The ...'.

50

Handwritten notes in the bottom section of the grid, including 'The ...' and 'The ...'.

Handwritten notes in the bottom section of the grid, including 'The ...' and 'The ...'.

Handwritten text at the bottom of the grid, possibly a title or reference number.