

TYPE OR PRINT

NOTICE OF INTENTION TO DRILL

C-1

15-165-20,250-0000

TO BE FILED WITH THE STATE CORPORATION COMMISSION PRIOR TO COMMENCEMENT OF WELL

1. Operator Frontier Oil Company Address 1720 Wichita Plaza-Wichita, Ks.
2. Lease name Janson "A" Well No. 1 County Rush
3. Well Location NW NW NE Sec. 7 Township 17 South Range 16 West
4. Well to be drilled 330 ft. from nearest lease line.
5. Drilling Contractor Red Tiger Drilling Co. Address 1720 Wichita Plaza-Wichita, Ks.
6. Type of equipment: Rotary  Cable Tool . Approx. date operation to begin 8/4/69 196.
7. Well to be drilled for Oil  Gas  Disposal  Input  Estimated Total Depth of Well 3650 ft.
8. Depth of deepest fresh water well within one mile of location 100 ft. If none exists, write NONE.
9. Ground elevation at location is approx. level ft. higher or \_\_\_\_\_ ft. lower than ground elevation at water well.
10. Depth of the deepest municipal water well within three miles of location \_\_\_\_\_ ft. If none exists, write NONE  
none
11. Operator states that he will set surface pipe at least 25 ft. below all Tertiary or unconsolidated deposits and, taking into consideration differences in ground elevations, that the minimum depth necessary, to the best of his knowledge and belief, to protect all fresh water zones is 100 ft. and operator agrees to set surface pipe at this location to a depth of not less than 200 ft. Alternate 1  Alternate 2 .

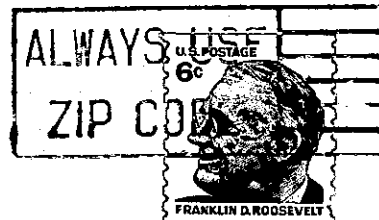
REMARKS:

FRONTIER OIL COMPANY

Signature of Operator by:

*Doris Jean Stacks*





**State Corporation Commission of Kansas  
Conservation Division  
500 Insurance Building  
212 North Market  
Wichita, Kansas 67202**

**RECEIVED  
STATE CORPORATION COMMISSION  
AUG 4 1969  
CONSERVATION DIVISION  
Wichita, Kansas**

**(IF PREFERRED, MAIL IN ENVELOPE)**