



KANSAS CORPORATION COMMISSION 1102466
OIL & GAS CONSERVATION DIVISION

Form ACO-1
June 2009

Form Must Be Typed
Form must be Signed
All blanks must be Filled

WELL COMPLETION FORM
WELL HISTORY - DESCRIPTION OF WELL & LEASE

OPERATOR: License # 3532
Name: CMX, Inc.
Address 1: 1700 N WATERFRONT PKWY Bldg 300B
Address 2: _____
City: WICHITA State: KS Zip: 67206 + _____
Contact Person: Leah A. Kasten
Phone: (316) 269-9052
CONTRACTOR: License # 5929
Name: Duke Drilling Co., Inc.
Wellsite Geologist: Douglas H. McGinness II
Purchaser: _____

Designate Type of Completion:
 New Well Re-Entry Workover
 Oil WSW SWD SIOW
 Gas D&A ENHR SIGW
 OG GSW Temp. Abd.
 CM (Coal Bed Methane)
 Cathodic Other (Core, Expl., etc.): _____

If Workover/Re-entry: Old Well Info as follows:
Operator: _____
Well Name: _____

Original Comp. Date: _____ Original Total Depth: _____
 Deepening Re-perf. Conv. to ENHR Conv. to SWD
 Conv. to GSW
 Plug Back: _____ Plug Back Total Depth
 Commingled Permit #: _____
 Dual Completion Permit #: _____
 SWD Permit #: _____
 ENHR Permit #: _____
 GSW Permit #: _____
12/29/2011 2/2/2012 2/6/2012
Spud Date or Date Reached TD Completion Date or
Recompletion Date Recompletion Date

API No. 15 - 15-159-22667-01-00
Spot Description: _____
S2_S2_S2_NE Sec. 10 Twp. 21 S. R. 7 East West
2490 Feet from North / South Line of Section
1320 Feet from East / West Line of Section
Footages Calculated from Nearest Outside Section Corner:
 NE NW SE SW
County: Rice
Lease Name: Socrates Well #: 1-H
Field Name: Wherry
Producing Formation: Mississippian
Elevation: Ground: 1602 Kelly Bushing: 1614
Total Depth: 7950 Plug Back Total Depth: _____
Amount of Surface Pipe Set and Cemented at: 210 Feet
Multiple Stage Cementing Collar Used? Yes No
If yes, show depth set: _____ Feet
If Alternate II completion, cement circulated from: _____
feet depth to: _____ w/ _____ sx cmt.

Drilling Fluid Management Plan
(Data must be collected from the Reserve Pit)
Chloride content: 700 ppm Fluid volume: 1020 bbls
Dewatering method used: Hauled to Disposal
Location of fluid disposal if hauled offsite:
Operator Name: Messenger Petroleum
Lease Name: Nicholas License #: 4706
Quarter NE Sec. 20 Twp. 30 S. R. 8 East West
County: Kingman Permit #: D-27434

AFFIDAVIT

I am the affiant and I hereby certify that all requirements of the statutes, rules and regulations promulgated to regulate the oil and gas industry have been fully complied with and the statements herein are complete and correct to the best of my knowledge.

Submitted Electronically

KCC Office Use ONLY

Letter of Confidentiality Received
Date: _____
 Confidential Release Date: _____
 Wireline Log Received
 Geologist Report Received
 UIC Distribution
ALT I II III Approved by: Deanna Garrison Date: 12/18/2012



1102466

Operator Name: CMX, Inc. Lease Name: Socrates Well #: 1-H
 Sec. 10 Twp. 21 S. R. 7 East West County: Rice

INSTRUCTIONS: Show important tops and base of formations penetrated. Detail all cores. Report all final copies of drill stems tests giving interval tested, time tool open and closed, flowing and shut-in pressures, whether shut-in pressure reached static level, hydrostatic pressures, bottom hole temperature, fluid recovery, and flow rates if gas to surface test, along with final chart(s). Attach extra sheet if more space is needed. Attach complete copy of all Electric Wire-line Logs surveyed. Attach final geological well site report.

Drill Stem Tests Taken <input type="checkbox"/> Yes <input checked="" type="checkbox"/> No <i>(Attach Additional Sheets)</i> Samples Sent to Geological Survey <input checked="" type="checkbox"/> Yes <input type="checkbox"/> No Cores Taken <input type="checkbox"/> Yes <input checked="" type="checkbox"/> No Electric Log Run <input checked="" type="checkbox"/> Yes <input type="checkbox"/> No Electric Log Submitted Electronically <input checked="" type="checkbox"/> Yes <input type="checkbox"/> No <i>(If no, Submit Copy)</i> List All E. Logs Run: Porosity Resistivity	<input type="checkbox"/> Log Formation (Top), Depth and Datum <input type="checkbox"/> Sample <table style="width:100%; border-collapse: collapse;"> <tr> <td style="width:60%;">Name</td> <td style="width:20%;">Top</td> <td style="width:20%;">Datum</td> </tr> <tr> <td>Heebner</td> <td>2688</td> <td>-1074</td> </tr> <tr> <td>Mississippi</td> <td>3363</td> <td>-1749</td> </tr> </table>	Name	Top	Datum	Heebner	2688	-1074	Mississippi	3363	-1749
Name	Top	Datum								
Heebner	2688	-1074								
Mississippi	3363	-1749								

CASING RECORD <input checked="" type="checkbox"/> New <input type="checkbox"/> Used							
Report all strings set-conductor, surface, intermediate, production, etc.							
Purpose of String	Size Hole Drilled	Size Casing Set (In O.D.)	Weight Lbs. / Ft.	Setting Depth	Type of Cement	# Sacks Used	Type and Percent Additives
Production	8.75	7	26	3748	50/50 Pozmix	150	10% CalSeal, Kol Seal
Surface	17.875	13.375	48	210	Class A	200	CCT & gel

ADDITIONAL CEMENTING / SQUEEZE RECORD				
Purpose:	Depth Top Bottom	Type of Cement	# Sacks Used	Type and Percent Additives
___ Perforate				
___ Protect Casing	-			
___ Plug Back TD				
___ Plug Off Zone	-			

Shots Per Foot	PERFORATION RECORD - Bridge Plugs Set/Type Specify Footage of Each Interval Perforated	Acid, Fracture, Shot, Cement Squeeze Record <i>(Amount and Kind of Material Used)</i>	Depth

TUBING RECORD: Size: _____ Set At: _____ Packer At: _____		Liner Run: <input type="checkbox"/> Yes <input type="checkbox"/> No	
see attached packers plus			
Date of First, Resumed Production, SWD or ENHR. _____		Producing Method: <input type="checkbox"/> Flowing <input type="checkbox"/> Pumping <input type="checkbox"/> Gas Lift <input type="checkbox"/> Other (Explain) _____	
Estimated Production Per 24 Hours	Oil Bbls.	Gas Mcf	Water Bbls. Gas-Oil Ratio Gravity

DISPOSITION OF GAS: <input type="checkbox"/> Vented <input type="checkbox"/> Sold <input type="checkbox"/> Used on Lease <i>(If vented, Submit ACO-18.)</i>	METHOD OF COMPLETION: <input checked="" type="checkbox"/> Open Hole <input type="checkbox"/> Perf. <input type="checkbox"/> Dually Comp. <input type="checkbox"/> Commingled <i>(Submit ACO-5) (Submit ACO-4)</i> <input checked="" type="checkbox"/> Other (Specify) <u>Packers Plus - Mechanical Failure</u>	PRODUCTION INTERVAL: <u>3748-7950</u>
---	---	--



Socrates #1H

Rice County, KS

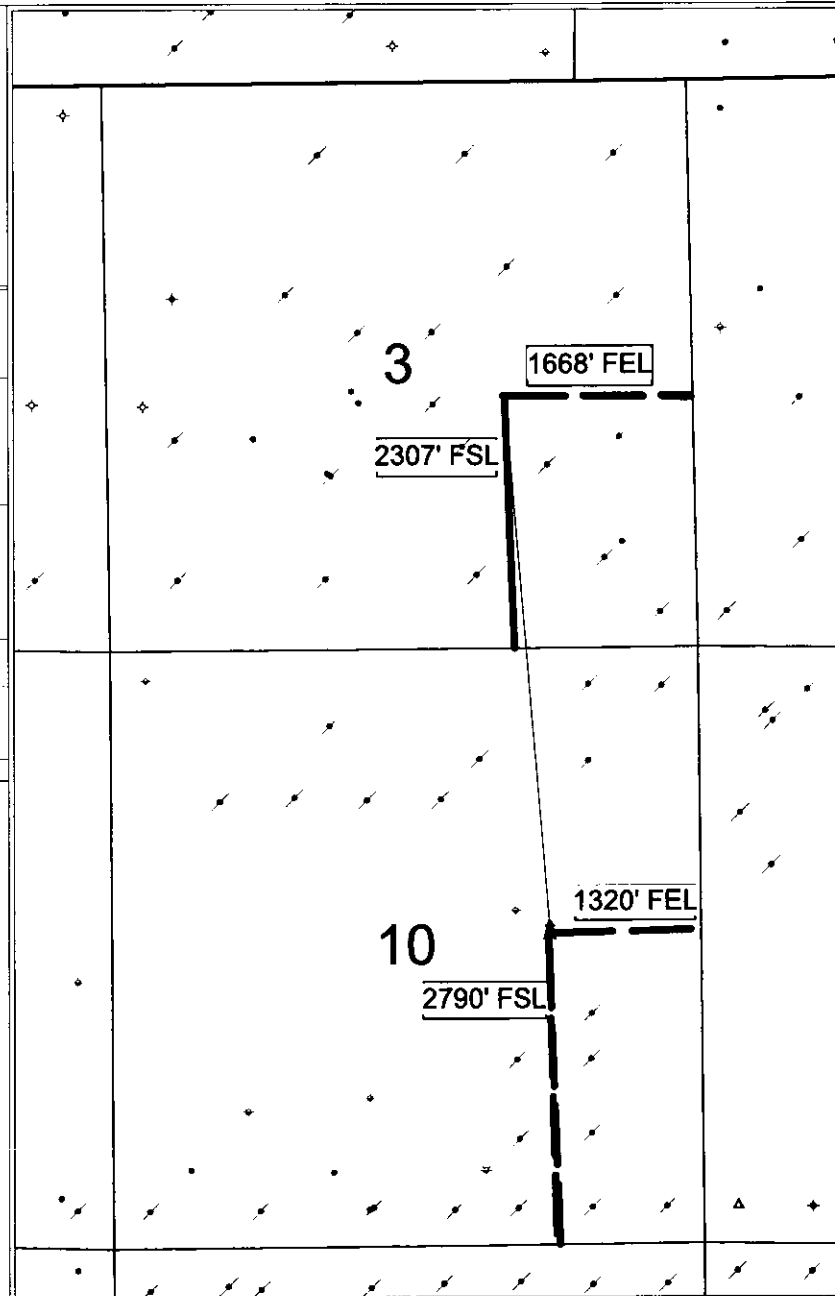
Sec 10 - 21S- 7W

- WELL SYMBOLS
- Oil Well
 - ◇ Dry Hole
 - △ Service Well
 - Dry Hole, With Show of Oil
 - Dry Hole, With Show of Oil & Gas
 - ⊕ Drilling Well
 - ⊖ Plugged Oil Well

By: Leah A. Kasten



November 26, 2012



Surface: 150' FSL 1320 FEL NE/4

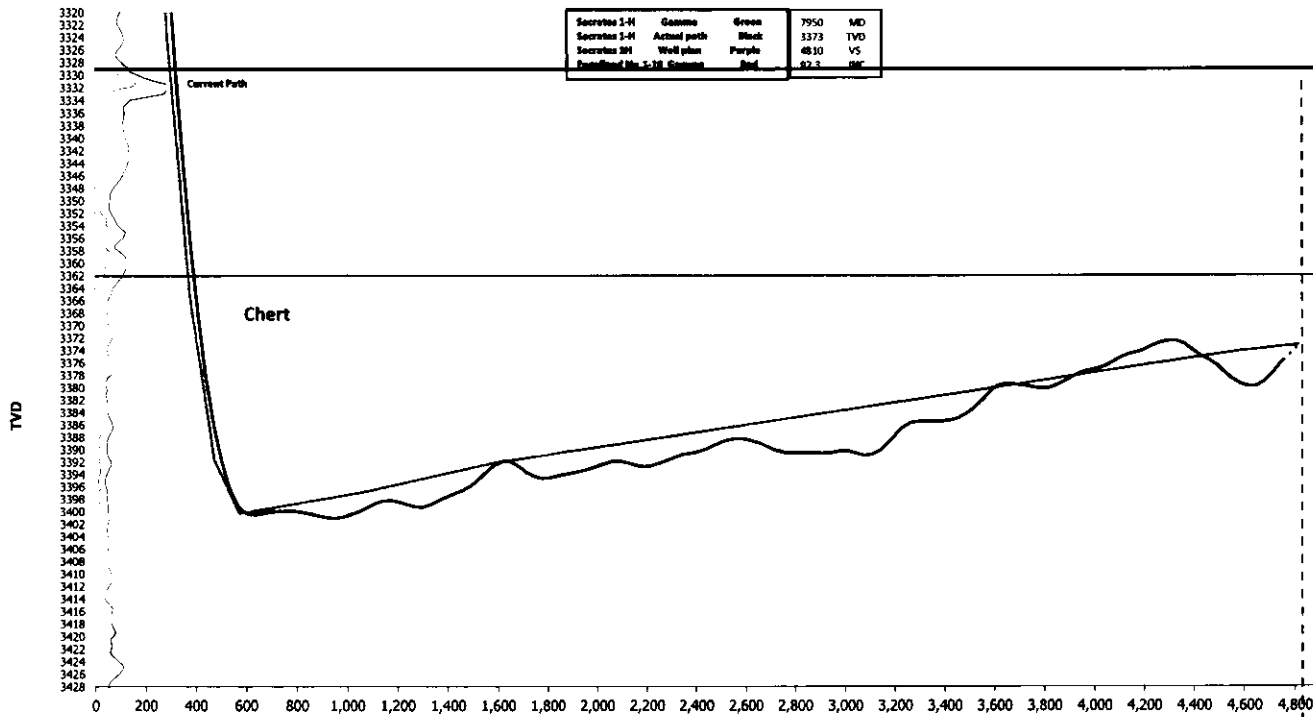
Sec 10-21S-7W

KB: 1614

CMX Socrates 1H Sec 10-21S-7W Rice Co. Kansas

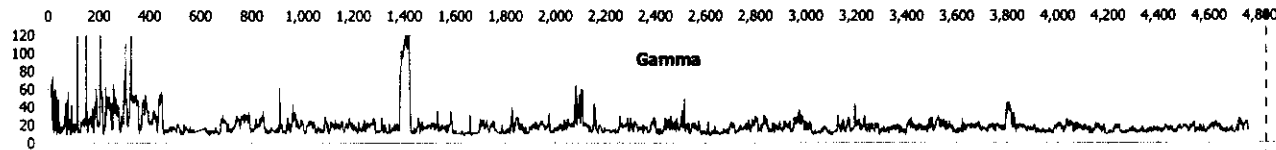
EOL: 2310 FSL 1650 FEL SE/4

Sec 3-21S-7W



Socrates 1-H	Gamma	Green	7950	MD
Socrates 1-H	Actual path	Black	3373	TVD
Socrates 3H	Well plan	Purple	4810	VS
Drilled No. 1-18	Gamma	Red	82.3	MC

Vertical Section





Survey Sheet

Company:	Husky Ventures	Job Number:	OK11133	Calculation Method: Minimum Curvature	
Well:	Hoffman 1-25	Mag Decl.:	4.43	Proposed Azimuth	355.44
Location:	McPherson Co, Kansas	Dir Driller:	Greg Becker/Doug Randall	Depth Reference	Directional Driller
Rig:	Duke #20	MWD Eng:	Anthony Donaruma	Tie Into:	Wireline
Leg:	Main Leg	MWD Eng:	Tyler Garret		

Survey Number	Survey Depth (ft)	Inclination (deg)	Azimuth (deg)	Course Length (ft)	True Vertical Depth (ft)	Vertical Section (ft)	Coordinates		Closure		Dogleg Severity (ft/100')	Build Rate (d/100')	Walk Rate (d/100')		
							N/S (ft)	E/W (ft)	Distance (ft)	Direction Azimuth					
Tie In	210	0.0	355.5		210	0	0	N	0	E					
1	420	0.6	313.8	210	420.00	0.82	0.76	N	0.79	W	1.10	313.80	0.29	0.29	-19.83
2	703	0.5	331.6	283	702.98	3.06	2.87	N	2.45	W	3.78	319.54	0.07	-0.04	6.29
3	996	0.5	43.1	283	985.97	5.02	4.86	N	2.19	W	5.33	335.71	0.21	0.00	-101.94
4	1268	1.1	82.0	282	1267.95	6.01	6.14	N	1.33	E	6.28	12.21	0.28	0.21	13.79
5	1547	0.6	95.3	279	1546.92	5.92	6.37	N	5.43	E	8.38	40.45	0.19	-0.18	4.77
6	1831	0.4	78.0	284	1830.91	5.80	6.44	N	7.88	E	10.18	50.75	0.09	-0.07	-6.09
7	2114	0.3	344.2	283	2113.90	6.65	7.36	N	8.65	E	11.36	49.60	0.18	-0.04	94.06
8	2398	0.9	68.4	284	2397.89	8.03	8.90	N	10.52	E	13.78	49.78	0.32	0.21	-97.11
9	2682	1.3	73.8	284	2681.84	9.34	10.62	N	15.69	E	18.94	55.91	0.15	0.14	1.90
10	2754	1.2	73.7	72	2753.82	9.65	11.06	N	17.20	E	20.44	57.26	0.14	-0.14	-0.14
11	2786	1.3	58.3	32	2785.81	9.89	11.34	N	17.83	E	21.13	57.53	1.09	0.31	-48.13
12	2817	2.8	29.1	31	2816.79	10.68	12.19	N	18.49	E	22.15	56.61	5.75	4.84	-94.19
13	2848	5.7	17.4	31	2847.70	12.74	14.32	N	19.32	E	24.05	53.46	9.72	9.35	-37.74
14	2880	8.6	13.2	32	2879.45	16.49	18.17	N	20.34	E	27.27	48.24	9.20	9.06	-13.13
15	2911	11.0	11.4	31	2910.00	21.54	23.32	N	21.46	E	31.69	42.62	7.80	7.74	-5.81
16	2942	13.5	9.4	31	2940.29	27.90	29.79	N	22.63	E	37.41	37.22	8.18	8.06	-6.45
17	2974	16.3	9.0	32	2971.21	35.89	37.91	N	23.95	E	44.84	32.28	8.76	8.75	-1.25
18	3005	19.1	8.0	31	3000.74	45.07	47.24	N	25.33	E	53.60	28.21	9.09	9.03	-3.23
19	3037	22.0	6.5	32	3030.70	56.07	58.38	N	26.74	E	64.21	24.61	9.21	9.06	-4.69
20	3068	24.8	3.9	31	3059.15	68.20	70.64	N	27.84	E	75.92	21.51	9.62	9.03	-8.39
21	3100	27.5	1.9	32	3087.87	82.18	84.72	N	28.54	E	89.40	18.62	8.87	8.44	-6.25
22	3131	30.5	0.7	31	3114.98	97.13	99.74	N	28.88	E	103.84	16.15	9.86	9.68	-3.87
23	3163	33.3	359.9	32	3142.15	113.98	116.65	N	28.96	E	120.19	13.94	8.85	8.75	1122.50
24	3194	36.3	358.9	31	3167.60	131.63	134.34	N	28.77	E	137.38	12.09	9.85	9.68	-3.23
25	3226	39.6	356.6	32	3192.83	151.28	154.00	N	27.98	E	156.52	10.30	11.22	10.31	-7.19
26	3257	43.0	354.6	31	3216.12	171.74	174.39	N	26.40	E	176.38	8.61	11.76	10.97	-6.45
27	3289	46.6	353.6	32	3238.82	194.28	196.81	N	24.08	E	198.28	6.97	11.46	11.25	-3.13
28	3320	50.0	353.5	31	3259.44	217.41	219.81	N	21.48	E	220.86	5.58	10.97	10.97	-0.32
29	3352	52.9	354.1	32	3279.38	242.42	244.69	N	18.78	E	245.41	4.39	9.18	9.06	1.88
30	3384	56.1	353.7	32	3297.96	268.46	270.59	N	16.01	E	271.06	3.39	10.05	10.00	-1.25
31	3415	59.1	354.0	31	3314.57	294.62	296.61	N	13.20	E	296.90	2.55	9.71	9.68	0.97
32	3447	61.8	353.6	32	3330.35	322.44	324.28	N	10.20	E	324.44	1.80	8.51	8.44	-1.25
33	3478	64.6	353.4	31	3344.32	350.09	351.77	N	7.06	E	351.84	1.15	9.05	9.03	-0.65
34	3510	67.4	352.2	32	3357.34	379.29	380.77	N	3.40	E	380.78	0.51	9.40	8.75	-3.75
35	3541	70.6	351.6	31	3368.45	408.17	409.42	N	0.68	W	409.42	359.90	10.48	10.32	-1.94
36	3573	74.2	351.7	32	3378.12	438.60	439.59	N	5.11	W	439.62	359.33	11.25	11.25	0.31
37	3605	77.5	350.7	32	3385.94	469.54	470.25	N	9.86	W	470.35	358.80	10.75	10.31	-3.13
38	3636	80.9	350.3	31	3391.75	499.88	500.28	N	14.88	W	500.50	358.30	11.04	10.97	-1.29
39	3668	83.5	351.2	32	3396.09	531.47	531.57	N	19.98	W	531.94	357.85	8.59	8.12	2.81
40	3699	86.2	350.4	31	3398.88	562.24	562.04	N	24.92	W	562.59	357.46	9.08	8.71	-2.58
41	3710	87.3	350.5	11	3399.50	573.18	572.87	N	26.74	W	573.49	357.33	10.04	10.00	0.91
42	3742	89.5	350.5	32	3400.39	605.05	604.42	N	32.02	W	605.26	356.97	6.88	6.88	0.00
43	3773	90.2	350.6	31	3400.47	635.94	635.00	N	37.11	W	636.08	356.66	2.28	2.26	0.32
44	3805	90.4	349.6	32	3400.31	667.80	666.52	N	42.61	W	667.88	356.34	3.19	0.63	-3.13
45	3837	90.5	349.3	32	3400.05	699.62	697.98	N	48.47	W	699.66	356.03	0.99	0.31	-0.94
46	3869	89.9	349.9	32	3399.94	731.45	729.45	N	54.24	W	731.46	355.75	2.65	-1.87	1.87
47	3900	90.1	350.2	31	3399.94	762.32	759.98	N	59.60	W	762.32	355.52	1.16	0.65	0.97
48	3932	89.9	350.7	32	3399.94	794.20	791.54	N	64.91	W	794.20	355.31	1.68	-0.62	1.56
49	3964	89.4	351.7	32	3400.14	826.11	823.16	N	69.80	W	826.12	355.15	3.49	-1.56	3.13
50	3995	89.6	352.7	31	3400.41	857.06	853.87	N	74.01	W	857.08	355.05	3.29	0.65	3.23
51	4027	89.3	353.2	32	3400.72	889.02	885.63	N	77.94	W	889.05	354.97	1.82	-0.94	1.56
52	4059	89.7	353.9	32	3401.00	921.00	917.43	N	81.53	W	921.04	354.92	2.52	1.25	2.19
53	4090	90.2	354.1	31	3401.02	952.00	948.26	N	84.77	W	952.04	354.89	1.74	1.61	0.65
54	4122	90.4	354.8	32	3400.85	983.99	980.11	N	87.87	W	984.04	354.88	2.28	0.63	2.19
55	4154	91.0	354.9	32	3400.46	1015.99	1011.97	N	90.74	W	1016.03	354.88	1.90	1.87	0.31
56	4186	90.9	354.8	32	3399.93	1047.98	1043.84	N	93.61	W	1048.03	354.88	0.44	-0.31	-0.31
57	4217	91.3	354.6	31	3399.34	1078.97	1074.70	N	96.48	W	1079.02	354.87	1.44	1.29	-0.65
58	4249	91.1	354.1	32	3398.67	1110.96	1106.54	N	99.62	W	1111.02	354.86	1.68	-0.63	-1.56
59	4281	90.4	355.5	32	3398.25	1142.95	1138.40	N	102.52	W	1143.01	354.85	4.89	-2.19	4.37
60	4312	89.7	356.0	31	3398.22	1173.95	1169.32	N	104.82	W	1174.01	354.88	2.77	-2.26	1.61
61	4344	89.5	356.3	32	3398.45	1205.95	1201.25	N	106.97	W	1206.00	354.91	1.13	-0.63	0.94

Company:	Husky Services	Job Number:	OK11133
Well:	Hoffman 1-20	Mag Decl.:	1.45
Location:	McPherson Co, Kansas	Dir Driller:	Greg Beckman/Doug Randall
Rig:	Duke 200	MWD Eng:	Anthony Dominguez
Leg:	Main Leg	MWD Eng:	Tyler Garret

Calculation Method: Minimum Curvature

Proposed Azimuth	355.44
Depth Reference	Directional Drilling
Tie Into:	Wireline

Survey Number	Survey Depth (ft)	Inclination (deg)	Azimuth (deg)	Course Length (ft)	True Vertical Depth (ft)	Vertical Section (ft)	Coordinates		Closure		Dogleg Severity (ft/100')	Build Rate (d/100')	Walk Rate (d/100')
							N/S (ft)	E/W (ft)	Distance (ft)	Direction Azimuth			
62	4376	89.1	356.3	32	3398.84	1237.94	1233.18	N 109.04	W 1237.99	354.95	1.25	-1.25	0.00
63	4408	89.5	356.4	32	3399.23	1269.94	1265.11	N 111.07	W 1269.98	354.98	1.29	1.25	0.31
64	4440	89.4	356.9	32	3399.26	1301.93	1297.05	N 112.94	W 1301.96	355.02	3.22	2.81	1.56
65	4471	89.2	356.7	31	3398.82	1332.92	1328.00	N 114.67	W 1332.94	355.06	2.66	2.58	-0.65
66	4503	89.2	356.3	32	3398.15	1364.90	1359.94	N 116.63	W 1364.93	355.10	1.25	0.00	-1.25
67	4534	89.0	356.3	31	3397.58	1395.89	1390.87	N 118.49	W 1395.91	355.13	1.88	-0.97	1.61
68	4566	89.0	356.2	32	3397.05	1427.88	1422.81	N 120.44	W 1427.90	355.16	1.90	0.31	-1.88
69	4598	89.0	356.4	32	3396.50	1459.87	1454.74	N 122.51	W 1459.89	355.19	0.62	0.00	0.62
70	4630	89.0	357.0	32	3395.77	1491.86	1486.68	N 124.35	W 1491.87	355.22	2.65	1.87	1.88
71	4661	89.2	356.8	31	3394.74	1522.83	1517.61	N 126.08	W 1522.84	355.25	2.33	1.94	-1.29
72	4693	89.2	356.8	32	3393.51	1554.80	1549.53	N 127.92	W 1554.81	355.28	0.62	0.00	0.62
73	4725	89.5	356.8	32	3392.45	1586.77	1581.46	N 129.76	W 1586.78	355.31	1.98	-1.88	-0.62
74	4757	89.5	358.3	32	3391.87	1618.76	1613.40	N 131.74	W 1618.77	355.33	3.56	-3.44	-0.94
75	4789	89.1	355.0	31	3391.97	1649.76	1644.31	N 134.09	W 1649.76	355.34	6.16	-4.52	-4.19
76	4820	88.4	354.5	32	3392.67	1681.75	1676.16	N 137.02	W 1681.76	355.33	2.69	-2.19	-1.56
77	4852	88.2	354.3	32	3393.62	1713.73	1708.00	N 140.14	W 1713.74	355.31	0.88	-0.63	-0.62
78	4883	89.0	354.4	31	3394.35	1744.72	1738.84	N 143.19	W 1744.72	355.29	2.92	2.90	0.32
79	4915	89.0	356.0	32	3394.63	1776.72	1770.72	N 145.87	W 1776.72	355.29	5.59	2.50	5.00
80	4947	89.5	357.0	32	3394.52	1808.71	1802.66	N 147.82	W 1808.71	355.31	3.64	1.87	3.13
81	4978	89.5	357.4	31	3394.25	1839.69	1833.62	N 149.34	W 1839.70	355.34	1.29	0.00	1.29
82	5010	89.4	358.9	32	3394.00	1871.68	1865.58	N 150.93	W 1871.68	355.37	1.59	-0.31	-1.56
83	5042	89.6	357.8	32	3393.72	1903.66	1897.55	N 152.41	W 1903.66	355.41	2.88	0.62	2.81
84	5073	89.5	357.7	31	3393.42	1934.63	1928.52	N 153.63	W 1934.63	355.45	0.46	-0.32	-0.32
85	5105	89.5	357.6	32	3393.14	1966.61	1960.49	N 154.94	W 1966.61	355.48	0.31	0.00	-0.31
86	5137	89.0	357.1	32	3392.72	1998.59	1992.46	N 156.42	W 1998.59	355.51	2.21	1.56	-1.56
87	5168	89.5	357.3	31	3392.24	2029.57	2023.42	N 157.93	W 2029.57	355.54	0.91	-0.65	0.65
88	5200	89.6	356.8	32	3391.87	2061.55	2055.37	N 159.63	W 2061.56	355.56	2.38	-0.94	-2.19
89	5232	89.6	356.2	32	3391.84	2093.55	2087.30	N 161.64	W 2093.55	355.57	3.08	-2.81	-1.25
90	5264	89.3	355.4	32	3392.15	2125.55	2119.22	N 163.99	W 2125.55	355.58	2.67	-0.94	-2.50
91	5295	89.2	355.0	31	3392.56	2156.54	2150.11	N 166.58	W 2156.55	355.57	1.33	-0.32	-1.29
92	5327	89.2	354.2	32	3392.73	2188.54	2181.96	N 169.59	W 2188.54	355.56	4.00	3.13	-2.50
93	5359	89.5	354.3	32	3392.53	2220.53	2213.80	N 172.80	W 2220.53	355.54	0.99	0.94	0.31
94	5390	89.8	355.0	31	3392.18	2251.53	2244.66	N 175.69	W 2251.53	355.52	2.46	0.97	2.26
95	5422	89.8	354.1	32	3391.70	2283.52	2276.52	N 178.73	W 2283.52	355.51	2.83	0.31	-2.81
96	5454	89.0	354.1	32	3391.17	2315.51	2308.34	N 182.02	W 2315.51	355.49	0.31	0.31	0.00
97	5485	89.4	354.3	31	3390.79	2346.50	2339.18	N 185.15	W 2346.50	355.47	2.04	-1.94	0.65
98	5517	89.5	354.2	32	3390.60	2378.49	2371.02	N 188.35	W 2378.49	355.46	0.44	-0.31	-0.31
99	5549	89.7	353.8	32	3390.32	2410.48	2402.84	N 191.70	W 2410.48	355.44	1.77	1.25	-1.25
100	5581	89.0	354.1	32	3389.84	2442.46	2434.66	N 195.07	W 2442.46	355.42	1.33	0.94	0.94
101	5612	89.1	354.5	31	3389.28	2473.45	2465.50	N 198.15	W 2473.45	355.41	1.33	0.32	1.29
102	5644	89.0	354.4	32	3388.69	2505.44	2497.34	N 201.33	W 2505.44	355.39	1.29	-0.31	-1.25
103	5675	89.3	354.6	31	3388.34	2536.43	2528.19	N 204.38	W 2536.43	355.38	2.77	-2.26	1.61
104	5707	89.2	354.9	32	3388.20	2568.43	2560.05	N 207.31	W 2568.43	355.37	0.99	-0.31	0.94
105	5738	89.4	354.4	31	3388.31	2599.43	2590.92	N 210.20	W 2599.43	355.36	3.04	-2.58	-1.61
106	5770	89.4	355.0	32	3388.64	2631.42	2622.78	N 213.15	W 2631.42	355.35	1.87	0.00	1.88
107	5802	89.1	355.4	32	3389.06	2663.42	2654.66	N 215.83	W 2663.42	355.35	1.56	-0.94	1.25
108	5833	88.7	356.2	31	3389.66	2694.41	2685.57	N 218.10	W 2694.41	355.36	2.88	-1.29	2.58
109	5865	89.3	357.1	32	3390.21	2726.40	2717.51	N 219.97	W 2726.40	355.37	3.38	1.87	2.81
110	5897	89.8	356.8	32	3390.47	2758.39	2749.47	N 221.67	W 2758.39	355.39	1.82	1.56	-0.94
111	5928	89.0	356.3	31	3390.52	2789.38	2780.41	N 223.54	W 2789.38	355.40	1.74	0.65	-1.61
112	5960	89.1	356.4	32	3390.49	2821.38	2812.34	N 225.58	W 2821.38	355.41	0.44	0.31	0.31
113	5992	89.0	355.8	32	3390.46	2853.37	2844.27	N 227.75	W 2853.37	355.42	1.90	-0.31	-1.87
114	6023	89.8	355.2	31	3390.52	2884.37	2875.17	N 230.18	W 2884.37	355.42	2.04	-0.65	-1.94
115	6055	89.0	355.1	32	3390.57	2916.37	2907.06	N 232.89	W 2916.37	355.42	0.70	0.63	-0.31
116	6087	89.4	354.7	32	3390.46	2948.37	2938.93	N 235.73	W 2948.37	355.41	1.77	1.25	-1.25
117	6118	89.3	354.1	31	3390.27	2979.37	2969.78	N 238.76	W 2979.37	355.40	1.96	-0.32	-1.94
118	6150	89.8	354.8	32	3390.25	3011.36	3001.63	N 241.85	W 3011.36	355.39	2.69	-1.56	2.19
119	6181	89.0	355.0	31	3390.57	3042.36	3032.51	N 244.61	W 3042.36	355.39	2.66	-2.58	0.65
120	6213	89.7	354.8	32	3390.93	3074.35	3064.38	N 247.45	W 3074.35	355.38	2.28	2.19	-0.62
121	6245	89.6	355.8	32	3390.85	3106.35	3096.27	N 250.08	W 3106.35	355.38	4.20	2.81	3.13
122	6276	89.7	355.9	31	3390.23	3137.34	3127.18	N 252.32	W 3137.35	355.39	3.56	3.55	0.32
123	6308	89.4	355.9	32	3389.08	3169.32	3159.08	N 254.61	W 3169.32	355.39	2.19	2.19	0.00
124	6340	89.6	355.7	32	3387.69	3201.29	3190.96	N 256.95	W 3201.29	355.40	0.88	0.62	-0.62
125	6371	89.1	355.9	31	3386.42	3232.27	3221.86	N 259.22	W 3232.27	355.40	1.74	-1.61	0.65
126	6403	89.7	356.1	32	3385.63	3264.25	3253.77	N 261.45	W 3264.25	355.41	4.42	-4.37	0.63
127	6435	89.9	356.7	32	3385.47	3296.25	3285.70	N 263.46	W 3296.25	355.42	3.12	-2.50	1.87
128	6467	89.1	356.8	32	3385.47	3328.24	3317.65	N 265.27	W 3328.24	355.43	0.70	0.62	0.31
129	6498	89.0	356.5	31	3385.44	3359.23	3348.60	N 267.08	W 3359.23	355.44	1.02	-0.32	-0.97
130	6530	89.1	356.3	32	3385.41	3391.23	3380.54	N 269.09	W 3391.23	355.45	0.70	0.31	-0.62
131	6561	89.5	356.1	31	3385.25	3422.22	3411.47	N 271.15	W 3422.22	355.46	1.44	1.29	-0.65

Company:	Husky Services	Job Number:	OK11133	Calculation Method:	Minimum Curvature
Well:	Hoffman J-33	Mag Decl.:	A-13	Proposed Azimuth	355.44
Location:	McPherson Co, Kansas	Dir Driller:	Greg Beckwith/Doug Randall	Depth Reference	Directional Control
Rig:	Dual Rig	MWD Eng:	Anthony Dominguez	Tie Into:	355.44
Leg:	Main Leg	MWD Eng:	Tyler Dams		

Survey Number	Survey Depth (ft)	Inclination (deg)	Azimuth (deg)	Course Length (ft)	True Vertical Depth (ft)	Vertical Section (ft)	Coordinates		Closure		Dogleg Severity (ft/100')	Build Rate (d/100')	Walk Rate (d/100')		
							N/S (ft)	E/W (ft)	Distance (ft)	Direction Azimuth					
132	6593	90.7	356.4	32	3384.91	3454.22	3443.40	N	273.24	W	3454.22	355.46	1.13	0.63	0.94
133	6625	91.7	356.4	32	3384.24	3486.21	3475.33	N	275.25	W	3486.21	355.47	3.12	3.13	0.00
134	6656	91.9	356.0	31	3383.27	3517.19	3506.24	N	277.30	W	3517.19	355.48	1.44	0.65	-1.29
135	6688	92.3	355.4	32	3382.10	3549.17	3538.13	N	279.70	W	3549.17	355.48	2.25	1.25	-1.88
136	6720	92.7	355.0	32	3380.70	3581.14	3569.99	N	282.37	W	3581.14	355.48	1.77	1.25	-1.25
137	6751	91.1	356.3	31	3379.67	3612.12	3600.86	N	284.99	W	3612.12	355.47	5.25	-5.16	0.97
138	6783	90.0	356.1	32	3379.37	3644.12	3632.77	N	287.39	W	3644.12	355.48	4.25	-3.44	2.50
139	6815	89.7	356.0	32	3379.45	3676.11	3664.69	N	289.60	W	3676.11	355.48	0.99	-0.94	-0.31
140	6846	89.7	355.8	31	3379.61	3707.11	3695.61	N	291.81	W	3707.11	355.49	0.65	0.00	-0.65
141	6878	89.6	356.4	32	3379.81	3739.11	3727.52	N	294.27	W	3739.11	355.49	1.29	-0.31	-1.25
142	6900	89.6	356.2	22	3379.96	3761.11	3749.44	N	296.07	W	3761.11	355.49	0.91	0.00	-0.91
143	6932	89.8	355.4	32	3380.13	3793.11	3781.33	N	298.69	W	3793.11	355.48	0.88	0.63	0.62
144	6963	90.8	355.8	31	3379.97	3824.11	3812.24	N	301.07	W	3824.11	355.48	3.47	3.23	1.29
145	6995	90.0	356.1	32	3379.49	3856.10	3844.16	N	303.33	W	3856.11	355.49	0.99	0.31	0.94
146	7027	91.4	355.9	32	3378.85	3888.10	3876.07	N	305.56	W	3888.10	355.49	1.68	1.56	-0.63
147	7058	91.4	355.8	31	3378.09	3919.09	3906.98	N	307.81	W	3919.09	355.50	0.32	0.00	-0.32
148	7090	90.8	356.4	32	3377.53	3951.08	3938.90	N	309.98	W	3951.08	355.50	3.12	-2.50	1.87
149	7122	90.5	356.3	32	3377.23	3983.07	3970.84	N	312.02	W	3983.08	355.51	0.44	-0.31	-0.31
150	7153	90.6	356.2	31	3376.93	4014.07	4001.77	N	314.05	W	4014.07	355.51	0.46	0.32	-0.32
151	7185	91.0	356.5	32	3376.48	4046.06	4033.70	N	316.08	W	4046.07	355.52	1.56	1.25	0.94
152	7217	91.4	356.2	32	3375.81	4078.05	4065.63	N	318.12	W	4078.06	355.53	1.56	1.25	-0.94
153	7248	91.2	355.9	31	3375.11	4109.04	4096.55	N	320.25	W	4109.05	355.53	1.16	-0.65	-0.97
154	7280	90.6	356.2	32	3374.61	4141.03	4128.47	N	322.46	W	4141.04	355.53	2.10	-1.88	0.94
155	7312	90.6	356.5	32	3374.30	4173.03	4160.38	N	324.77	W	4173.04	355.54	2.21	-0.31	-2.19
156	7343	91.0	357.0	31	3373.89	4204.03	4191.31	N	326.80	W	4204.03	355.54	5.10	1.61	4.84
157	7375	91.3	357.4	32	3373.25	4236.00	4223.27	N	328.36	W	4236.01	355.55	1.56	0.94	1.25
158	7407	90.8	357.3	32	3372.72	4267.98	4255.23	N	329.84	W	4267.99	355.57	2.21	-2.19	-0.31
159	7439	90.3	357.8	32	3372.47	4299.96	4287.20	N	331.21	W	4299.97	355.58	1.82	-0.94	1.56

ALLIED

OIL & GAS SERVICES, LLC

PO Box 470308
Fort Worth, TX 76147

Voice: (817) 546-7282
Fax: (817) 246-3361

INVOICE

Invoice Number: 129744
Invoice Date: Dec 30, 2011
Page: 1

Bill To:
CMX, Inc.
1700 N Waterfront Parkway
Bldg 300, Suite B
Wichita, KS 67206

Customer ID	Well/Location or Completion ID	Billing Period	
CMX	Socratus # 1-H	Net 30 Days	
Job Location	Completion	Start Date	End Date
KS2-01	Medicine Lodge	Dec 30, 2011	1/29/12

Quantity	Unit	Description	Unit Price	Amount
200.00	MAT	Class A Common	16.25	3,250.00
4.00	MAT	Gel	21.25	85.00
7.00	MAT	Chloride	58.20	407.40
211.00	SER	Handling	2.25	474.75
25.00	SER	Mileage	23.21	580.25
1.00	SER	Surface	1,125.00	1,125.00
25.00	SER	Heavy Vehicle Mileage	7.00	175.00
1.00	SER	Manifold Head Rental	200.00	200.00
25.00	SER	Light Vehicle Mileage	4.00	100.00
1.00	EQP	13 3/8 TRP	341.00	341.00
1.00	EQP	13 3/8 Guide Shoe	672.00	672.00
1.00	EQP	13 3/8 Sure Seal Float Collar	1,460.00	1,460.00
3.00	EQP	13 3/8 Centralizers	73.00	219.00
1.00	EQP	13 3/8 Limit Ring	73.00	73.00
1.00	CEMENTER	David Fello		
1.00	EQUIP OPER	Matt Thimesch		
1.00	EQUIP OPER	Adam Miller		

Subtotal	9,162.40
Sales Tax	475.04
Total Invoice Amount	9,637.44
Payment/Credit Applied	
TOTAL	9,637.44

ALL PRICES ARE NET, PAYABLE
30 DAYS FOLLOWING DATE OF
INVOICE. 1 1/2% CHARGED
THEREAFTER. IF ACCOUNT IS
CURRENT, TAKE DISCOUNT OF

ONLY IF PAID ON OR BEFORE

Jan 23, 2012

1832.48

ALLIED CEMENTING CO., LLC. 037867

REMIT TO P.O. BOX 31
RUSSELL, KANSAS 67665

SERVICE POINT:
Madison Heights KS

DATE <i>12-30-11</i>	SEC <i>10</i>	TWP <i>R1s</i>	RANGE <i>07W</i>	CALLED OUT	ON LOCATION	JOB START	JOB FINISH
LEASE <i>Socrates</i>	WELL # <i>1-H</i>	LOCATION <i>Stealing, KS, Egg Sucking Rd.</i>			COUNTY <i>Rice</i>	STATE <i>KS</i>	
OLD OR NEW (Circle one)				to Rd 22, N to Rd "T", 1/2 E. quarter		<i>KS2-01 MBE</i>	

CONTRACTOR *Duke #20* OWNER *CMX* *7.3% TAX ONLY*

TYPE OF JOB *Surface*

HOLE SIZE <i>17 1/2"</i>	TD <i>210'</i>	CEMENT
CASING SIZE <i>13 3/8"</i>	DEPTH <i>210'</i>	AMOUNT ORDERED <i>200sx class A + 3% cut</i>
TUBING SIZE	DEPTH	<i>2 bags</i>
DRILL PIPE	DEPTH	
TOOL	DEPTH	
PRES. MAX <i>600#</i>	MINIMUM	
MRS. LINE	SHO JOINT <i>42.19</i>	

COMMON <i>200 sx</i>	@ <i>26.25</i>	<i>5250.00</i>
POZMIX	@	
GEL <i>4 sx</i>	@ <i>21.25</i>	<i>85.00</i>
CHLORIDE <i>7 sx</i>	@ <i>58.20</i>	<i>407.40</i>
ASC	@	

DISPLACEMENT *264 Bags Fresh H70*

EQUIPMENT

PUMP TRUCK	CEMENTER <i>D. F. Lin 1</i>
# <i>360-265</i>	HELPER <i>M. Thimesch 2</i>
BULK TRUCK	
# <i>364</i>	DRIVER <i>A. Miller 2</i>
BULK TRUCK	
#	DRIVER

HANDLING <i>211</i>	@ <i>2.25</i>	<i>474.75</i>
MILEAGE <i>25/211/11</i>		<i>580.25</i>
		TOTAL <i>4797.40</i>

REMARKS:

*Pipe on Bottom Break (circulation Pump Spun
Mix 200'sx A-342 cement, Stop Pump, Release
Plug, Start Displacement w/ Fresh H70 Wash,
up out of Plug, See Steady increase in PST,
Slow Rate, Bump Plug 400' at 264 Bags
total Displ, Release 5', Float Did
Hole by Cement Pick Case.*

SERVICE

DEPTH OF JOB <i>210'</i>	
PUMP TRUCK CHARGE	<i>1125.00</i>
EXTRA FOOTAGE	@
MILEAGE <i>25</i>	@ <i>7.00</i> <i>175.00</i>
MANIFOLD <i>Hand Antil</i>	@ <i>200.00</i>
<i>Light Vehicle</i> <i>25</i>	@ <i>4.00</i> <i>100.00</i>

CHARGE TO: *CMX*

STREET: _____

CITY: _____ STATE: _____ ZIP: _____

TOTAL *1600.00*

To Allied Cementing Co., LLC.
You are hereby requested to rent cementing equipment and furnish cementer and helper(s) to assist owner or contractor to do work as is listed. The above work was done to satisfaction and supervision of owner agent or contractor. I have read and understand the "GENERAL TERMS AND CONDITIONS" listed on the reverse side.

PLUG & FLOAT EQUIPMENT

<i>1-TRP</i>	@	<i>341.00</i>
<i>1- Guide Shoe</i>	@	<i>672.00</i>
<i>1- Sure Seal Float Collar</i>	@	<i>1460.00</i>
<i>3- centralizers</i>	@ <i>75.00</i>	<i>219.00</i>
<i>1- Limit Ring</i>	@	<i>75.00</i>
		TOTAL <i>2765.00</i>

PRINTED NAME *Ed Gladden*

SIGNATURE *Ed Gladden*

SALES TAX (if Any) *475.04*

TOTAL CHARGES *9162.40*

DISCOUNT *20%* IF PAID IN 30 DAYS

NET 7329.92

D1832.48

INVOICE

HALLIBURTON

Halliburton Energy Services, Inc.

Remit To: P.O. Box 203143, Houston, TX 77216-3143

Wire Transfer Information

Account Number: Account 00032969

ABA Routing Number: 021000089

Invoice Date: January 10, 2012

Invoice Number: 98282276

DIRECT CORRESPONDENCE TO:
 P.O. Box 69
 Burns Flat, OK 73624-0069
 US
 Tel: (580) 562-3131
 Fax: (580) 562-3387

Rig Name:
 Well Name: CMX SOCRATES 1-H,RICE
 Ship to: LYONS, KS 67554
 RICE
Job Date: January 08, 2012
Cust. PO No.: NA
Payment Terms: Net 20 days from Invoice date
Quote No.:
Sales Order No.: 9191684
Manual Ticket No.:
Shipping Point: BURNS FLAT Shipping Point
Ultimate Destination Country: US
Customer Account No.: 316054

TO:
 CMX INC
 BLDG. 300 STE B
 1700 N WATERFRONT PKWY
 WICHITA KS 67206

Contract No.:
Contract from:
Contract to:

Material	Description	QTY	UOM	Base Amount	Unit Amount	Gross Amount	Discount	Net Amount
7522	CMT INTERMEDIATE CASING BOM / JP015	1.00	JOB					
2	MILEAGE FOR CEMENTING CREW,ZI 000-119 Number of Units	400.000	MI		5.76	2,304.00	1,267.20	1,036.80
		1	unit					
1	ZI-MILEAGE FROM NEAREST HES BA 000-117 Number of Units	400.000	MI		9.79	3,916.00	2,153.80	1,762.20
		1	unit					
16091	ZI - PUMPING CHARGE 001-016 DEPTH FEET/METERS (FT/M)	1.000	EA		4,790.00	4,790.00	2,634.50	2,155.50
		3,740	FT					
141	RCM II W/ADC,/JOB,ZI 046-065 NUMBER OF UNITS	1.000	JOB		1,990.00	1,990.00	1,094.50	895.50
		1	each					
132	PORT. DAS W/CEMWIN;ACQUIRE W/H 045-050 NUMBER OF DAYS	1.000	JOB		1,649.00	1,649.00	906.95	742.05
		1	Days					
74038	ZI PLUG CONTAINER RENTAL-1ST D DAYS OR FRACTION (MIN1)	1.000	EA	1,322.00		1,322.00	727.10	594.90
		1	Days					
*101229888	PLUG,CMTG, TOP, 7,HWE,5.66 MIN/6 / PLUG, CEMENTING, TOP, 7, HWE, 5.66 / MIN/6.54 MAX CASING ID, SYNTHETIC / SERVICE	1.000	EA		289.00	289.00	158.95	130.05
*452992	ECONOCEM (TM) SYSTEM CMT, EconoCem (TM) system	25.00	SK		27.82	695.50	382.53	312.97

INVOICE

HALLIBURTON

Continuation

Halliburton Energy Services, Inc.

Remit To: P.O. Box 203143, Houston, TX 77216-3143

Invoice Date: January 10, 2012

Invoice Number: 98282276

Material	Description	QTY	UOM	Base Amount	Unit Amount	Gross Amount	Discount	Net Amount
*100064022	CALSEAL 60 508-127516.00335 / CHEMICAL - CAL SEAL - BULK	3.000	SK		97.60	292.80	161.04	131.76
*100001617	HALAD-9	9.000	LB		31.41	282.69	155.48	127.21
*100064233	KOL-SEAL CHEMICAL, KOL-SEAL LOST CIRCULATION / ADDITIVE, BULK	125.000	LB		1.64	205.00	112.75	92.25
*452992	ECONOCEM (TM) SYSTEM CMT, EconoCem (TM) system	120.00	SK		27.82	3,398.40	1,836.12	1,502.28
*100064022	CALSEAL 60 508-127516.00335 / CHEMICAL - CAL SEAL - BULK	11.000	SK		97.60	1,073.60	590.48	483.12
*100001617	HALAD-9	43.000	LB		31.41	1,350.63	742.85	607.78
*100064233	KOL-SEAL CHEMICAL, KOL-SEAL LOST CIRCULATION / ADDITIVE, BULK	600.000	LB		1.64	984.00	541.20	442.80
76400	ZI MILEAGE,CMT MTLs DEL/RET MI 500-306 / MILEAGE,CMTG MTLs DEL/RET PER/TON MI.MIN NUMBER OF TONS	200.000 7.66	MI ton		3.35	5,132.20	2,822.71	2,309.49
3965	HANDLE&DUMP SVC CHRG, CMT&ADDI 500-207 NUMBER OF EACH	186.000 1	CF each		5.49	1,021.14	561.63	459.51
86954	ZI FUEL SURCHG-CARS/PICKUPS<1 FUEL SURCHG-CARS/PICKUPS<1 1/2TON/PER/MI Number of Units	400.000 1	MI unit		0.23	92.00		92.00
86955	ZI FUEL SURCHG-HEAVY TRKS >1 1 FUEL SURCHG-HEAVY TRKS >1 1/2 TON/PER MI Number of Units	400.000 1	MI unit		0.68	272.00		272.00
87605	ZI FUEL SURCHG-CMT & CMT ADDIT FUEL SURCHG-CMT & CMT ADDITIVES/PER TNM NUMBER OF TONS	200.000 7.66	MI ton		0.23	352.36		352.36
372867	Cmt PSL - DOT Vehicle Charge, Cmt PSL - DOT Vehicle Charge, CMT	2.000	EA		241.00	482.00		482.00

INVOICE

Continuation

HALLIBURTON

Halliburton Energy Services, Inc.

Remit To: P.O. Box 203143, Houston, TX 77216-3143

Invoice Date: January 10, 2012

Invoice Number: 98282276

Material	Description	QTY	UOM	Base Amount	Unit Amount	Gross Amount	Discount	Net Amount
16092	ADDITIONAL HOURS (PUMPING EQUI / / / 001-018 / CSG PUMPING,ADD HR,ZI HOURS	8.000	EA		927.00	7,416.00	4,078.80	3,337.20
		1.00	hr					
	Taxable							3,830.22
	Non-Taxable							14,491.51
	Total					39,250.32	20,928.59	18,321.73
	INVOICE TOTAL					39,250.32	20,928.59	18,321.73
	Sales Tax - State -KS							241.31
	Sales Tax - County -RICE							38.30
								18,601.34
								US Dollars

Payment Terms:

If Customer does not have an approved open account with Halliburton, all sums are payable in cash at the time of performance of services or delivery of equipment, products, or materials. If Customer has an approved open account, invoices are payable based upon the payment terms stated on this invoice or as otherwise stated in the applicable Halliburton contract governing performance or delivery. Customer agrees to pay interest on any unpaid balance from the date payable until paid at the highest lawful contract rate applicable. In the event Halliburton employs an attorney for collection of any amount, Customer agrees to pay all reasonable and necessary attorney fees to recover the unpaid amount, plus all collection and court costs.

Damon Ditts Phone: 9185516208 Cell: 918-605-5706

HALLIBURTON

SALES ORDER

Halliburton Energy Services, Inc.

Sales Order Number: 9191684

Sales Order Date: January 07, 2012

SOLD TO:

CMX INC
BLDG. 300 STE B
1700 N WATERFRONT PKWY
WICHITA KS 67208
USA

Rig Name:

Well/Rig Name: CMX SOCRATES 1-H,RICE
Company Code: 1100
Customer P.O. No.: NA
Shipping Point: Burns Flat, OK, USA
Sales Office: Mid-Continent BD
Well Type: Gas
Well Category: Development
Service Location: 0031
Payment Terms: Net 20 days from invoice date
Ticket Type: Services
Order Type: ZOH

SHIP TO:

CMX SOCRATES 1-H,RICE
SOCRATES 1-H
RICE
LYONS KS 67554
USA

Material	Description	QTY	UOM	Base Amount	Unit Amount	Gross Amount	Discount	Net Amount
7522	CMT INTERMEDIATE CASING BOM / JF015	1.00	JOB					
2	MILEAGE FOR CEMENTING CREW,ZI 000-119 Number of Units	400.000	MI		5.76	2,304.00	1,267.20-	1,036.80
		1	unit					
1	ZI-MILEAGE FROM NEAREST HES 000-117 Number of Units	400.000	MI		9.79	3,916.00	2,153.80-	1,762.20
		1	unit					
16091	ZI - PUMPING CHARGE 001-016 DEPTH FEET/METERS (FT/M)	1.000	EA		4,790.00	4,790.00	2,634.50-	2,155.50
		3,740						
		FT						
141	RCM II W/ADC,/JOB,ZI 046-065 NUMBER OF UNITS	1.000	JOB		1,990.00	1,990.00	1,094.50-	895.50
		1	each					
132	PORT. DAS W/CEMWIN;ACQUIRE 045-050 NUMBER OF DAYS	1.000	JOB		1,649.00	1,649.00	906.95-	742.05
		1	Days					
74038	ZI PLUG CONTAINER RENTAL-1ST DAYS OR FRACTION (MIN1)	1.000	EA	1,322.00		1,322.00	727.10-	594.90
		1	Days					

HALLIBURTON

Halliburton Energy Services, Inc.

Sales Order Number: 9191684

Sales Order Date: January 07, 2012

Material	Description	QTY	UOM	Base Amount	Unit Amount	Gross Amount	Discount	Net Amount
101229888	PLUG,CMTG, TOP, 7, HWB, 5.66 / PLUG, CEMENTING, TOP, 7, HWB, 5.66 / MINUS.54 MAX CASING ID, SYNTHETIC / SERVICE	1.000	EA		289.00	289.00	158.95-	130.05
452992	ECONOCBM (TM) SYSTEM CMT, EconoCbm (TM) system	25.000	SK		27.82	695.50	382.53-	312.97
100064022	CALSEAL 60 508-127516.00335 / CHEMICAL - CAL SEAL - BULK	3.000	SK		97.60	292.80	161.04-	131.76
100001617	HALAD-9	9.000	LB		31.41	282.69	155.48-	127.21
100064233	KOL-SEAL CHEMICAL, KOL-SEAL LOST CIRCULATION / ADDITIVE, BULK	125.000	LB		1.64	205.00	112.75-	92.25
452992	ECONOCBM (TM) SYSTEM CMT, EconoCbm (TM) system	120.000	SK		27.82	3,338.40	1,836.12-	1,502.28
100064022	CALSEAL 60 508-127516.00335 / CHEMICAL - CAL SEAL - BULK	11.000	SK		97.60	1,073.60	590.48-	483.12
100001617	HALAD-9	43.000	LB		31.41	1,350.63	742.85-	607.78
100064233	KOL-SEAL CHEMICAL, KOL-SEAL LOST CIRCULATION / ADDITIVE, BULK	600.000	LB		1.64	984.00	541.20-	442.80
76400	ZI MILEAGE,CMT MTLs DEL/RET 500-306 / MILEAGE,CMTG MTLs DEL/RET PER/TON MI.MIN NUMBER OF TONS	200.000	MI		3.35	5,132.20	2,822.71-	2,309.49
3965	HANDLE&DUMP SVC CHRg, 500-207 NUMBER OF EACH	186.000	CF		5.49	1,021.14	561.63-	459.51
86934	ZI FUEL SURCHG-CARS/PICKUPS <1 1/2TON	400.000	MI		0.23	92.00		92.00

HALLIBURTON

Halliburton Energy Services, Inc.

Sales Order Number: 9191684

Sales Order Date: January 07, 2012

Material	Description	QTY	UOM	Base Amount	Unit Amount	Gross Amount	Discount	Net Amount
	FUEL SURCHG-CARS/PICKUPS <1 1/2 TON/PER/MI Number of Units	1	unit					
86955	ZI FUEL SURCHG-HEAVY TRKS >1 1/2 TON FUEL SURCHG-HEAVY TRKS >1 1/2 TON/PER MI Number of Units	400.000	MI		0.68	272.00		272.00
87605	ZI FUEL SURCHG-CMT & CMT ADDITIVES FUEL SURCHG-CMT & CMT ADDITIVES/PER TNM NUMBER OF TONS	200.000 7.66	MI ton		0.23	352.36		352.36
372867	Cmt PSL - DOT Vehicle Charge, CMT Cmt PSL - DOT Vehicle Charge, CMT	2.000	EA		241.00	482.00		482.00
16092	ADDITIONAL HOURS (PUMPING /// 001-016 / CSG PUMPING,ADD HR,ZI HOURS	8.000 1.00	EA hr		927.00	7,416.00	4,078.80-	3,337.20
SALES ORDER AMOUNT						39,250.32	20,928.59-	
SALES ORDER TOTAL						39,250.32	20,928.59-	18,321.73
Sales Tax - State								241.31
Sales Tax - County								38.30
Total Weight: 15,747.98 LB								18,601.34 US Dollars

INVOICE INSTRUCTIONS:

Operator Name:
Customer Agent:

Halliburton Approval: X _____
Customer Signature: X _____

HALLIBURTON

Field Ticket

Field Ticket Number: 9191684		Field Ticket Date: 8-Jan-12	
EST TO: CMX INC 1700 N. WATERFRONT PKWY WICHITA, KS 67206		Job Name: Intermediate Casing Order Type: Streamline Order (ZOH) Well Name: Socrates 1-H Company Code: 1100 Customer PO No.: NA Shipping Point: Burns Flat, OK, USA Sales Office: Mid-Continent SD Well Type: Gas Well Category: Development	
SPRING TIE: CMX SOCRATES 1-H, RICE SOCRATES 1-H 2001091 LYONS, KS 67664			

Material	Description	QTY	UOM	Base Amt	Unit Amt	Gross Amount	Discount	Net Amount
7522	CMT INTERMEDIATE CASING BOM	1	JOB	0.00	0.00	0.00		0.00
2	MILEAGE FOR GEMENTING CREW, ZI <i>Number of Units</i>	400 1	MI	0.00	6.76	2,304.00	55%	1,036.80 ✓
1	ZI-MILEAGE FROM NEAREST HES BASE, UNIT <i>Number of Units</i>	400 1	MI	0.00	9.79	3,916.00	55%	1,762.20 ✓
16091	ZI - PUMPING CHARGE <i>DEPTH, FEET/METERS (FT/M)</i>	1 3740	EA FT	0.00	4,780.00	4,780.00	55%	2,165.50 ✓
141	RCM II WADG, JOB, ZI <i>NUMBER OF UNITS</i>	1 1	JOB	0.00	1,080.00	1,080.00	55%	895.50 ✓
132	PORT. DAS WICEMWIN, ACQUIRE WHES, ZI <i>NUMBER OF DAYS</i>	1 1	JOB	0.00	1,649.00	1,649.00	55%	742.05 ✓
74038	ZI PLUG CONTAINER RENTAL-1ST DAY <i>DAYS OR FRACTION (MIN)</i>	1 1	EA	1,322.00	0.00	1,322.00	55%	594.90 ✓
101229888	PLUG, CMTG, TOP, 7, HW, 5.65 MIN, 5.54 MAX CS	1 ✓	EA	0.00	289.00	289.00	55%	190.05 ✓
452882	ECONOCEM (TM) SYSTEM	25 ✓	SK			685.50	55%	312.97 ✓
100064022	CALSEAL 60	3 ✓	SK	0.00	97.60	292.80	55%	131.76 ✓
100001617	HALAD-9	9 ✓	LB	0.00	31.41	282.69	55%	127.21 ✓
100004233	KOL-SEAL	125 ✓	LB	0.00	1.64	205.00	55%	92.25 ✓
452992	ECONOCEM (TM) SYSTEM	120 ✓	SK			3,338.40	55%	1,502.28 ✓
100064022	CALSEAL 60	11 ✓	SK	0.00	97.60	1,073.60	55%	483.12 ✓

Field Ticket Number: 9191684

Field Ticket Date: January 08, 2012
1 of 3

HALLIBURTON

Field Ticket

Field Ticket Number: 9191684		Field Ticket Date: 8-Jan-12	
Site To: CMX, INC 1700 N WATERFRONT PKWY WICHITA, KS 67208		Job Name: Intermediate Gaslog Order Type: Streamline Order (ZOI) Well Name: Socrates 1-H Company Code: 1100 Customer PO No.: NA Shipping Point: Burns Flat, OK, USA Sales Office: Mid-Continent BD Well Type: Gas Well Category: Development	
Site To: CMX, SOCRATES 1-H, RICE SOCRATES 1-H 2901081 LYONS, KS 67554			

Material	Description	QTY	UOM	Base Amt	Unit Amt	Gross Amount	Discount	Net Amount
100001617	HALAD-9	43	LB	0.00	31.41	1,350.63	55%	607.78
100064233	KOL-SEAL	600	LB	0.00	1.64	984.00	55%	442.80
76400	ZI MILEAGE, CMT. MILES DEL/RET MIN NUMBER OF TONS	200 7.66	MI	0.00	3.35	5,132.20	55%	2,308.49
3985	HANDLE & DUMP SVC; CHR. CMT & ADDITIVES, ZI NUMBER OF EACH	186 1	CF	0.00	5.49	1,021.14	55%	459.51
86954	ZI FUEL SURCHG-CARS/PICKUPS < 1 1/2 TON Number of Units	400 1	MI	0.00	0.23	92.00		92.00
86955	ZI FUEL SURCHG-HEAVY TRKS > 1 1/2 TON Number of Units	400 1	MI	0.00	0.66	272.00		272.00
87605	ZI FUEL SURCHG-CMT & CMT ADDITIVES NUMBER OF TONS	200 7.66	MI	0.00	0.23	352.36		352.36
372867	Cmt PSL - DOT Vehicle Charge, CMT	2	EA	0.00	241.00	482.00		482.00
16092	ADDITIONAL HOURS (PUMPING EQUIPMENT), ZI HOURS	8 1	EA	0.00	927.00	7,416.00	55%	3,337.20
Totals						USD		
						39,250.32	20,928.59	18,321.73

Halliburton Rep: SCOTTY WALTON
 Customer Agent:
 Halliburton Approval:

HALLIBURTON

Field Ticket

Field Ticket Number: 9191684	Field Ticket Date: 8-Jan-12
Site No: CMX INC 1700 N WATERFRONT PKWY WICHITA, KS 67206	Job Name: Intermediate Casing Order Type: Streamline Order (ZOH) Well Name: Socrates 1-H Company Code: 1100 Customer PO No.: NA Shipping Point: Burns Flat, OK, USA Sales Office: Mid-Continent BD Well Type: Gas Well Category: Development
Site No: CMX SOCRATES 1-H, RICE SOCRATES 1-H 2801091 LYONS, KS 67554	

Material	Description	QTY	UOM	Rate Unit	Unit Amt	Gross Amount	Discount	Net Amount
----------	-------------	-----	-----	-----------	----------	--------------	----------	------------

THIS OUTPUT DOES NOT INCLUDE TAXES, APPLICABLE SALES TAX WILL BE BILLED ON THE FINAL INVOICE.
 CUSTOMER HEREBY ACKNOWLEDGES RECEIPT OF THE MATERIALS AND SERVICES DESCRIBED ABOVE AND ON THE ATTACHED DOCUMENTS.

x 
 Customer Signature

FIELD TICKET TOTAL: USD

18,321.73

Was our HSE performance satisfactory? Y or N Were you satisfied with our Equipment? Y or N Were you satisfied with our people? Y or N
 (Health, Safety, Environment)

Comments:

Did we provide job DVA above our normal service today? Y or N Hours: _____ Other: _____ Customer Initials: _____
 Please provide details:

HALLIBURTON

Cementing Job Summary

The Road to Excellence Starts with Safety

Sold To #: 316054	Ship To #: 2901091	Quote #:	Sales Order #: 9191684
Customer: CMX INC	Customer Rep:		
Well Name: Socrates	Well #: 1-H	API/UWI #:	
Field:	City (SAP): LYONS	County/Parish: Rice	State: Kansas
Legal Description: Section 10 Township 21S Range 7W			
Contractor: Duke	Rig/Platform Name/Nuri: 20		
Job Purpose: Cement Intermediate Casing			
Well Type: Development Well	Job Type: Cement Intermediate Casing		
Sales Person: CRAWFORD, ROBERT	Srvc Supervisor: WALTON, SCOTTY	MBU ID Emp #: 478229	

Job Personnel

HES Emp Name	Exp Hrs	Emp #	HES Emp Name	Exp Hrs	Emp #	HES Emp Name	Exp Hrs	Emp #
SEELY, MATTHEW Lance	18	507647	TURNER, DANIEL J	18	461812	WALTON, SCOTTY Dwayne	18	478229

Equipment

HES Unit #	Distance-1 way	HES Unit #	Distance-1 way	HES Unit #	Distance-1 way	HES Unit #	Distance-1 way

Job Hours

Date	On Location Hours	Operating Hours	Date	On Location Hours	Operating Hours	Date	On Location Hours	Operating Hours
1-7-12	6	0	1-8-12	12	1			

TOTAL Total is the sum of each column separately

Job				Job Times			
Formation Name	Formation Depth (MD) Top	Bottom	Called Out	Date	Time	Time Zone	
Form Type	BHST		On Location	07 - Jan - 2012	18:00	CST	
Job depth MD	3740. ft	Job Depth TVD	Job Started	08 - Jan - 2012	10:04	CST	
Water Depth	Wk Ht Above Floor		Job Completed	08 - Jan - 2012	10:43	CST	
Perforation Depth (MD) From	To	Departed Loc	08 - Jan - 2012	11:50	CST		

Well Data

Description	New / Used	Max pressure psig	Size in	ID in	Weight lbm/ft	Thread	Grade	Top MD ft	Bottom MD ft	Top TVD ft	Bottom TVD ft
Intermediate Casing Open Hole				8.75				1000.	3740.	1000.	3415.
Intermediate Casing	Unknown		7.	6.366	23.		N-80		3740.		3415.
Surface Casing	Unknown		9.625	8.921	36.				1000.		

Tools and Accessories

Type	Size	Qty	Make	Depth	Type	Size	Qty	Make	Depth	Type	Size	Qty	Make
Guide Shoe					Packer					Top Plug			
Float Shoe					Bridge Plug					Bottom Plug			
Float Collar					Retainer					SSR plug set			
Insert Float										Plug Container			
Stage Tool										Centralizers			

Miscellaneous Materials

Gelling Agt	Conc	Surfactant	Conc	Acid Type	Qty	Conc	%
Treatment Flid	Conc	Inhibitor	Conc	Sand Type	Size	Qty	

Fluid Data

Stage/Plug #: 1										
Fluid #	Stage Type	Fluid Name	Qty	Qty uom	Mixing Density lbm/gal	Yield ft ³ /sk	Mix Fluid Gal/sk	Rate bbl/min	Total Mix Fluid Gal/sk	

HALLIBURTON

Cementing Job Summary

Stage/Plug # 1									
Fluid #	Stage Type	Fluid Name	Qty	Qty uoin	Mixing Density lbm/gal	Yield ft ³ /sk	Mix Fluid Gal/sk	Rate bbl/min	Total Mix Fluid Gal/sk
1	50/50 POZ Standard	ECONOCEM (TM) SYSTEM (452992)	25.0	sacks	12.7	2.02	10.33		10.33
	10 %	CAL-SEAL 60, BULK (100064022)							
	0.4 %	HALAD(R)-9, 50 LB (100001617)							
	5 lbm	KOL-SEAL, BULK (100064233)							
	10.33 Gal	FRESH WATER							
2	50/50 POZ Standard	ECONOCEM (TM) SYSTEM (452992)	120.0	sacks	14.15	1.52	6.57		6.57
	10 %	CAL-SEAL 60, BULK (100064022)							
	0.4 %	HALAD(R)-9, 50 LB (100001617)							
	5 lbm	KOL-SEAL, BULK (100064233)							
	6.57 Gal	FRESH WATER							
3	Drilling Mud		146.00	bbl	9.2	.0	.0	.0	
Calculated Values		Pressures		Volumes					
Displacement	146bbl	Shut In: Instant		Lost Returns	0	Cement Slurry	39	Pad	
Top Of Cement	2615ft	5 Min		Cement Returns	0	Actual Displacement	146	Treatment	
Frac Gradient		15 Min		Spacers	0	Load and Breakdown		Total Job	
Rates									
Circulating		Mixing		Displacement		Avg. Job			
Cement Left in Pipe	Amount	40 ft	Reason	Shoe Joint					
Frac Ring # 1 @	ID	Frac ring # 2 @	ID	Frac Ring # 3 @	ID	Frac Ring # 4 @	ID		
The Information Stated Herein is Correct				Customer Representative Signature <i>Ed [Signature]</i>					

HALLIBURTON

Cementing Job Log

The Road to Excellence Starts with Safety

Sold To #: 316054	Ship To #: 2901091	Quote #:	Sales Order #: 9191684
Customer: CMX INC	Customer Rep:		
Well Name: Socrates	Well #: 1-H	API/UWI #:	
Field:	City (SAP): LYONS	County/Parish: Rice	State: Kansas
Legal Description: Section 10 Township 21S Range 7W			
Lat: N 0 deg. OR N 0 deg. 0 min. 0 secs.		Long: E 0 deg. OR E 0 deg. 0 min. 0 secs.	
Contractor: Duke	Rig/Platform Name/Num: 20		
Job Purpose: Cement Intermediate Casing			Ticket Amount:
Well Type: Development Well	Job Type: Cement Intermediate Casing		
Sales Person: CRAWFORD, ROBERT	Srv Supervisor: WALTON, SCOTTY	MBU ID Emp #: 478229	

Activity/Description	Date/Time	Cnt	Rate bbl/min	Volume bbl		Pressure psig		Comments
				Stage	Total	Tubing	Casing	
Call Out	01/07/2012 12:00							Scotty Walton, Daniel Turner, Lance Seely
Pre-Convoy Safety Meeting	01/07/2012 13:00							Scotty Walton, Daniel Turner, Lance Seely
Depart from Service Center or Other Site:	01/07/2012 13:30							
Arrive At Loc	01/07/2012 18:00							Arrived at Location Safely, Went over job procedures, calculations, and safety hazards. (Well TD 3749ft, Total Casing 3753.22ft, Shoe 40.36ft. 9.3ppg Mud, Pulling Drillpipe)
Assessment Of Location Safety Meeting	01/07/2012 18:05							Identified all Potential hazards and Safe Work Zones
Pre-Rig Up Safety Meeting	01/08/2012 07:50							All HES Personnel Present (watch for trip hazards, low lite areas, pinch points, confined spaces, and wear all appropriate PPE)
Rig-Up Equipment	01/08/2012 08:00							
Rig-Up Completed	01/08/2012 09:00							Rig Up Completed Safely
Circulate Well	01/08/2012 09:30							Rig Circulated Well for 1900Strokes
Activity/Description	Date/Time	Cnt	Rate bbl/min	Volume bbl		Pressure psig		Comments
				Stage	Total	Tubing	Casing	

Sold To #: 316054

Ship To #: 2901091

Quote #:

Sales Order #:

9191684

SUMMIT Version: 7.2.27

Sunday, January 08, 2012 11:32:00

HALLIBURTON

Cementing Job Log

Pre-Job Safety Meeting	01/08/2012 09:35							All HES, Customer Rep., and Rig Crew Present (Went over dangers of being near pressurized lines, PPE, Pumping Procedures, heat stress and safe zones, muster point, and nearest hospital)
Pressure Test	01/08/2012 10:04							Test Lines to 5000PSI (Rig Floor Clear, and Pumping Equipment area Clear, 7" 23# N-80 Casing Burst at 80% 6340* 8= 5072PSI Max Pressure)
Pump Spacer	01/08/2012 10:08		5.5	10	0		75.0	Pump 10BBL of Freshwater Spacer
Pump Lead Cement	01/08/2012 10:12		5.7	9	0		150.0	Pump 9BBL of 12.7PPG Halliburton 50/50 POZ Standard Cement (25 Sacks 2.02ft ³ /sk, 10.33gal/sk)(25sks*2.02ft ³ /sk= 50.5ft ³ * .1781 bbl/ft ³ = 9BBL)
Pump Tail Cement	01/08/2012 10:13		5.7	32	0		200.0	Pump 32BBL of 14.16PPG Halliburton 50/50 POZ Standard Cement (120 Sacks 1.52ft ³ /sk, 6.57gal/sk)(120sks*1.52ft ³ /sk= 182.4ft ³ * .1781 bbl/ft ³ = 32BBL)
Shutdown	01/08/2012 10:18							Pumping Cement Completed
Drop Top Plug	01/08/2012 10:19							Plug Left Cementing Head
Pump Displacement	01/08/2012 10:20		7	146	0		75.0	Started Displacement Pumping 7BPM Until Displacement Reaches Cement (Disp: 53712.86ft ³ * .0393bbl/ft ³ = 145.9bbl)
Slow Rate	01/08/2012 10:40		3	146	136		750.0	Slow Rate to Bump Plug
Bump Plug	01/08/2012 10:42		3	146	146		1300.0	Bumped Plug 500Psi Over Pumping Pressure
Check Floats	01/08/2012 10:43		0	146	146		.0	Floats Held (Full Returns Through Job)
Activity Description	Date/Time	Cnt #	Rate bbl/min	Volume bbl Stage	Total	Pressure psig Tubing	Casing	Comments

Sold To #: 316054

Ship To #: 2901091

Quote #:

Sales Order #: 9191684

SUMMIT Version: 7.2.27

Sunday, January 08, 2012 11:32:00

HALLIBURTON

Cementing Job Log

Pre-Rig Down Safety Meeting	01/08/2012 10:45							All HES Personell Present (Went Over Heat Stress, PPE, Pinch Points, Trip Hazards, and Importance of Communication)
Rig-Down Equipment	01/08/2012 10:50							
Depart Location for Service Center or Other Site	01/08/2012 11:30							Scotty Walton, Daniel Turner, Lance Seely
Rig-Down Completed	01/08/2012 11:40							Rig Down Completed Safely
Depart Location Safety Meeting	01/08/2012 11:45							Scotty Walton, Daniel Turner, Lance Seely

Sold To #: 316054

Ship To #: 2901091

Quote #:

Sales Order #:

9191684

SUMMIT Version: 7.2.27

Sunday, January 08, 2012 11:32:00



*Do It Once
Do It Right*

10-Stage 4-1/2" StackFRAC® HD

Mr. Brad Crouch

2/22/2012

StackFRAC® HD

Multi-Stage Fracturing System from



*Do It Once
Do It Right*

Prepared for:

Tres Management for CMX

Mr. Brad Crouch

Socrates 1H

Rice County, KS

10-Stage 4-1/2" StackFRAC® HD

Completion

4-1/2" 11.60# P-110 LTC





Do It Once.
Do It Right.

Confidential Information - not to be disclosed outside
Tres Management / CMX

Completion
FINAL

Prepared for		Company		Date		
Mr. Brad Crouch		Tres Management for CMX		5-Feb-12		
Well Name		Type of Installation		Location		
Socrates XX-XH		10-Stage 4-1/2" StackFRAC® HD		Rice County, KS		
Depth	Drawing	Description		OD (in)	ID (in)	Length
		7" shoe is set at 3749'				
		High Pressure Packoff assembly _____ MD				
KOP @						
2842'						
Packer @						
2898'						
Stage 5						
3082'		4-1/2" 11.60# N-80 LTC LINER JOINTS: 4		4.500"	4.000"	175.82'
48bbbls		11 Packers Plus 4-1/2" Drillable FracPORT® with 2.750" Seat for 2.875" High Pressure Ball (6 shear pins @ 315 psi each for 1,890 psi opening pressure) PN: 121332-000017 SN: EA1021679		5.630"	2.750"	2.65'
		4-1/2" 11.60# N-80 LTC LINER JOINTS: 4		4.500"	3.81"	
		6' x 4-1/2" 11.6# P-110 LTC Pup Joint PN: 106986-000013 w/ Centralizer PN: 104743		4.500"	4.000"	171.93'
		10 Packers Plus 7" x 4-1/2" RockSEAL® II 10K Hydraulic Set Open Hole Packer (6 pins @ 324 psi each for 1,944 psi setting) PN: 121381-000001 SN: EA3015384		4.500"	4.000"	
3263'		3' x 4-1/2" 11.6# P-110 LTC Pup Joint PN: 106982-000001 w/ Centralizer PN: 104743		4.500"	4.000"	
		4-1/2" 11.60# N-80 LTC LINER JOINTS: 4		5.75"	3.875"	14.41'
Stage 4						
3447'		9 Packers Plus 4-1/2" Drillable FracPORT® with 2.625" Seat for 2.750" High Pressure Ball (6 shear pins @ 315 psi each for 1,890 psi opening pressure) PN: 121332-000016 SN: EA1021648		4.500"	4.000"	176.00'
53bbbls		4-1/2" 11.60# N-80 LTC LINER JOINTS: 4		5.630"	2.625"	2.65'
		6' x 4-1/2" 11.6# P-110 LTC Pup Joint PN: 106986-000013 w/ Centralizer PN: 104743		4.500"	3.81"	
		8 Packers Plus 7" x 4-1/2" RockSEAL® II 10K Hydraulic Set Open Hole Packer (6 pins @ 324 psi each for 1,944 psi setting) PN: 102188-000003 SN: EA3015377		4.500"	4.000"	177.05'
		3' x 4-1/2" 11.6# P-110 LTC Pup Joint PN: 106982-000001 w/ Centralizer PN: 104743		4.500"	4.000"	
		4-1/2" 11.60# N-80 LTC LINER JOINTS: 4		5.75"	3.750"	14.42'
7" shoe 3749'						
tools in open hole						
Stage 3						
3818'		7 Packers Plus 4-1/2" Drillable FracPORT® with 2.500" Seat for 2.625" High Pressure Ball (6 shear pins @ 315 psi each for 1,890 psi opening pressure) PN: 121332-000015 SN: EA1003023		4.500"	4.000"	176.80'
59bbbls		4-1/2" 11.60# N-80 LTC LINER JOINTS: 4		5.630"	2.500"	2.65'
		6' x 4-1/2" 11.6# P-110 LTC Pup Joint PN: 106986-000013 w/ Centralizer PN: 104743		4.500"	3.81"	
		6 Packers Plus 7" x 4-1/2" RockSEAL® II 10K Hydraulic Set Open Hole Packer (6 pins @ 324 psi each for 1,944 psi setting) PN: 102188-000003 SN: EA3015529		4.500"	4.000"	176.80'
4004'		3' x 4-1/2" 11.6# P-110 LTC Pup Joint PN: 106982-000001 w/ Centralizer PN: 104743		4.500"	4.000"	
		4-1/2" 11.60# N-80 LTC LINER JOINTS: 5		5.75"	3.750"	14.42'
Stage 2						
4232'		5 Packers Plus 4-1/2" Drillable FracPORT® with 2.375" Seat for 2.500" High Pressure Ball (6 shear pins @ 315 psi each for 1,890 psi opening pressure) PN: 121332-000014 SN: EA1021570		4.500"	4.000"	220.06'
66bbbls		4-1/2" 11.60# N-80 LTC LINER JOINTS: 5		5.630"	2.375"	2.65'
		6' x 4-1/2" 11.6# P-110 LTC Pup Joint PN: 106986-000013 w/ Centralizer PN: 104743		4.500"	3.81"	
		4 Packers Plus 7" x 4-1/2" RockSEAL® II 10K Hydraulic Set Open Hole Packer (6 pins @ 324 psi each for 1,944 psi setting) PN: 121381-000001 SN: EA3015528		4.500"	4.000"	221.13'
4462'		3' x 4-1/2" 11.6# P-110 LTC Pup Joint PN: 106982-000001 w/ Centralizer PN: 104743		4.500"	4.000"	
		4-1/2" 11.60# N-80 LTC LINER JOINTS: 2		5.75"	3.875"	14.45'
		6' x 4-1/2" 11.6# P-110 LTC Pup Joint PN: 106986-000013 w/ Centralizer PN: 104743		4.500"	4.000"	
		3 Packers Plus 7" x 4-1/2" RockSEAL® IIS 10K Hydraulic Set Anchor Packer (6 shear pins at 324 psi each; 1,944 psi setting pressure) PN: 102428-000002 SN: EM0053333		4.500"	4.000"	88.33'
4565'		3' x 4-1/2" 11.6# P-110 LTC Pup Joint PN: 106982-000001 w/ Centralizer PN: 104743		4.500"	4.000"	
		4-1/2" 11.60# N-80 LTC LINER JOINTS: 2		5.75"	3.750"	16.38'
Stage 1						
4669'		2 6' x 4-1/2" 11.6# P-110 LTC Pup Joint PN: 106986-000013 w/ Centralizer PN: 104743		4.500"	4.000"	88.41'
72bbbls		Packers Plus 4-1/2" Dual Hydraulic FracPORT® PN: 121288-000001 SN: EA1020689 (11 pins at 391 psi each; 4,301 psi Upper) / (7 pins at 630 psi each; 4,410 psi Lower)		5.630"	3.750"	13.58'
		3' x 4-1/2" 11.6# P-110 LTC Pup Joint PN: 106982-000001 w/ Centralizer PN: 104743		4.500"	4.000"	
		4-1/2" 11.60# N-80 LTC LINER JOINTS: 1		4.500"	4.000"	44.19'
Toe Sub						
4727'		1 6' x 4-1/2" 11.6# P-110 LTC Pup Joint PN: 106986-000013		4.500"	4.000"	
73bbbls		Packers Plus 4-1/2" Toe Circulating Sub w/ 1.00" Seat for 1.25" High Pressure Ball (3 pins at 366 psi each; 1,098 psi closing pressure) PN: 104818-000002 SN: EA1019638		5.500"	NA	18.44'
		4-1/2" LTC Single Valve Float Collar PN: 104733-000001		5.000"	NA	
		6' x 4-1/2" 11.6# P-110 LTC Pup Joint PN: 106986-000013 w/ Centralizer PN: 104743		4.500"	4.000"	
		4-1/2" LTC Single Valve Float Collar PN: 104733-000001		5.000"	NA	
GS 4740'		4-1/2" LTC Guide Shoe PN: 121704-000001		5.500"	2.250"	
Service Center	Telephone	Contact		Telephone		
Conway, AR	501-327-0241	Gary Leber		Chad Williams 405-255-3223		

Page 1

PACKERS PLUS - PACKER PLACEMENT

Socrates 1H					
Item	Description	Length	Landed @	Accumulated	Proposed
			Actual MD		
			4740.00		
	GS	0.75	4739.25	0.75	
	FC	1.34	4737.91	2.09	
	pup	6.15	4731.76	8.24	
	FC	1.33	4730.43	9.57	
	TOE SUB	2.73	4727.70	12.30	
	pup	6.14	4721.56	18.44	
1	4 1/2" 11.6ppf N-80 LTC	44.19	4677.37	62.63	
	pup	3.10	4674.27	65.73	
	DHY	4.33	4669.94	70.06	
	pup	6.15	4663.79	76.21	
2	4 1/2" 11.6ppf N-80 LTC	44.19	4619.60	120.40	
3	4 1/2" 11.6ppf N-80 LTC	44.22	4575.38	164.62	
	pup	3.08	4572.30	167.70	
	RSIIS	7.18	4565.12	174.88	
	pup	6.12	4559.00	181.00	
4	4 1/2" 11.6ppf N-80 LTC	44.13	4514.87	225.13	
5	4 1/2" 11.6ppf N-80 LTC	44.20	4470.67	269.33	
	pup	3.10	4467.57	272.43	
	RSII	5.23	4462.34	277.66	
	pup	6.12	4456.22	283.78	
6	4 1/2" 11.6ppf N-80 LTC	44.24	4411.98	328.02	
7	4 1/2" 11.6ppf N-80 LTC	44.23	4367.75	372.25	
8	4 1/2" 11.6ppf N-80 LTC	44.22	4323.53	416.47	
9	4 1/2" 11.6ppf N-80 LTC	44.22	4279.31	460.69	
10	4 1/2" 11.6ppf N-80 LTC	44.22	4235.09	504.91	
	2.375 FRAC PORT	2.65	4232.44	507.56	
11	4 1/2" 11.6ppf N-80 LTC	43.73	4188.71	551.29	
12	4 1/2" 11.6ppf N-80 LTC	44.20	4144.51	595.49	
13	4 1/2" 11.6ppf N-80 LTC	44.22	4100.29	639.71	
14	4 1/2" 11.6ppf N-80 LTC	43.72	4056.57	683.43	
15	4 1/2" 11.6ppf N-80 LTC	44.19	4012.38	727.62	
	pup	3.09	4009.29	730.71	
	RSII	5.22	4004.07	735.93	
	pup	6.11	3997.96	742.04	
16	4 1/2" 11.6ppf N-80 LTC	44.22	3953.74	786.26	
17	4 1/2" 11.6ppf N-80 LTC	44.21	3909.53	830.47	
18	4 1/2" 11.6ppf N-80 LTC	44.21	3865.32	874.68	
19	4 1/2" 11.6ppf N-80 LTC	44.16	3821.16	918.84	
	2.50 FRAC PORT	2.65	3818.51	921.49	
20	4 1/2" 11.6ppf N-80 LTC	44.12	3774.39	965.61	
21	4 1/2" 11.6ppf N-80 LTC	44.22	3730.17	1009.83	
22	4 1/2" 11.6ppf N-80 LTC	44.20	3685.97	1054.03	
23	4 1/2" 11.6ppf N-80 LTC	44.21	3641.76	1098.24	
	pup	3.09	3638.67	1101.33	

PACKERS PLUS - PACKER PLACEMENT

	RSII	5.23	3633.44	1106.56	
	pup	6.10	3627.34	1112.66	
24	4 1/2" 11.6ppf N-80 LTC	44.21	3583.13	1156.87	
25	4 1/2" 11.6ppf N-80 LTC	44.22	3538.91	1201.09	
26	4 1/2" 11.6ppf N-80 LTC	44.14	3494.77	1245.23	
27	4 1/2" 11.6ppf N-80 LTC	44.48	3450.29	1289.71	
	2.625 FRAC PORT	2.65	3447.64	1292.36	
28	4 1/2" 11.6ppf N-80 LTC	44.21	3403.43	1336.57	
29	4 1/2" 11.6ppf N-80 LTC	44.22	3359.21	1380.79	
30	4 1/2" 11.6ppf N-80 LTC	44.24	3314.97	1425.03	
31	4 1/2" 11.6ppf N-80 LTC	43.33	3271.64	1468.36	
	pup	3.09	3268.55	1471.45	
	RSII	5.23	3263.32	1476.68	
	pup	6.09	3257.23	1482.77	
32	4 1/2" 11.6ppf N-80 LTC	41.02	3216.21	1523.79	
33	4 1/2" 11.6ppf N-80 LTC	43.45	3172.76	1567.24	
34	4 1/2" 11.6ppf N-80 LTC	43.28	3129.48	1610.52	
35	4 1/2" 11.6ppf N-80 LTC	44.18	3085.30	1654.70	
	2.75 FRAC PORT	2.65	3082.65	1657.35	
36	4 1/2" 11.6ppf N-80 LTC	43.20	3039.45	1700.55	
37	4 1/2" 11.6ppf N-80 LTC	44.23	2995.22	1744.78	
38	4 1/2" 11.6ppf N-80 LTC	44.20	2951.02	1788.98	
39	4 1/2" 11.6ppf N-80 LTC	44.19	2906.83	1833.17	
	pup	3.09	2903.74	1836.26	
	RSII	5.23	2898.51	1841.49	
	pup	6.10	2892.41	1847.59	
40	4 1/2" 11.6ppf N-80 LTC	43.24	2849.17	1890.83	
41	4 1/2" 11.6ppf N-80 LTC	44.18	2804.99	1935.01	
42	4 1/2" 11.6ppf N-80 LTC	43.66	2761.33	1978.67	
43	4 1/2" 11.6ppf N-80 LTC	44.22	2717.11	2022.89	
	2.875 FRAC PORT	2.65	2714.46	2025.54	these tools
44	4 1/2" 11.6ppf N-80 LTC	44.22	2670.24	2070.02	were
45	4 1/2" 11.6ppf N-80 LTC	44.22	2626.02	2114.50	removed
46	4 1/2" 11.6ppf N-80 LTC	44.22	2581.80	2158.98	from well
47	4 1/2" 11.6ppf N-80 LTC	44.22	2537.58	2203.46	
	2.875 FRAC PORT	2.65	2534.93	2206.11	
	4 1/2" 11.6ppf N-80 LTC	44.22	2493.71	2250.59	
48	4 1/2" 11.6ppf N-80 LTC	44.22	2449.49	2295.07	
49	4 1/2" 11.6ppf N-80 LTC	44.22	2405.27	2339.55	
	2.875 FRAC PORT	2.65	2402.62	2342.20	
50	4 1/2" 11.6ppf N-80 LTC	44.22	2358.40	2386.68	
51	4 1/2" 11.6ppf N-80 LTC	44.22	2314.18	2431.16	
52	4 1/2" 11.6ppf N-80 LTC	44.22	2269.96	2475.64	
	2.875 FRAC PORT	2.65	2267.31	2478.29	
53	4 1/2" 11.6ppf N-80 LTC	44.22	2225.69	2522.77	

PACKERS PLUS - PACKER PLACEMENT

54				
55				
56				
	3.00	2.00	2.00	2.00
57				
58				
59				
	1.50	1.25	1.50	1.50
60				
61				
62				
63				
	3.00	2.00	2.00	2.00
64				
65				
66				
67				
	1.50	1.25	1.50	1.50
68				
69				
70				
71				
72				
	3.00	2.00	2.00	2.00
73				
74				
75				
76				
77				
78				
79				
80				
81				
82				
83				
84				
85				

PACKERS PLUS - PACKER PLACEMENT

	UNIT	PACKER	PLACEMENT	
1				
2				
3				
4				
5				
6				
7				
8				
9				
10				
11				
12				
13				
14				
15				
16				
17				
18				
19				
20				
21				
22				
23				
24				
25				
26				
27				
28				
29				
30				
31				
32				
33				
34				
35				
36				
37				
38				
39				
86				



**Do It Once
Do It Right**

Job Record

Operator:	CMX	Base Point:	Conway
Company Rep:	Ed Gladden	Packers Plus Rep:	Gary Goodman/Brad Kelley
Well Name:	Socrates 1-H	Date Started:	1/17/2012
Ticket Number:	SOU004046	Date Completed:	2/5/2012
County/State:	Rice Co, Kansas	Type of Job:	StackFrac HD
Field	N/A	Formation	Mississippi
Rig Name	Duke 20	Well API #	N/A

DETAIL THE JOB - THIS FORM USED TO REPORT WHAT ACTUALLY TOOK PLACE - FILL OUT COMPLETELY

General Well Information				Stages			
Well Profile	Open Hole Horizontal			Number of Stages	3		
Depth TVD	3,770	Feet		Packers Set At			
Depth MD	7,950	Feet		MD to Packer 1	3377		
				Packer 1 to Packer 2	453.05		
				Packer 2 to Packer 3	365.4		
Lateral Length	4,201	Feet					
KOP	2,842	Feet					
Hole Size	6.125	Inch					
BHP	1,634	PSI					
BHT	98	°F					
Reamer run?	Yes	Size	6.00"				
Build Rate	10/100		*/100 FT				
Max Dog Leg	8		*/100 FT				
Angle of Perma Plus	0		°				
Planned Depth Guide Shoe	7650	Feet					
Actual Depth Guide Shoe	4740	Feet					
Distance Off		Feet		Average Stage Length	1398.463333	Feet	

WORK STRING INFORMATION

Casing	Weight	Thread	ID	Capacity	Grade	Shoe	
7	26	Itc	6	0.038263237	J55	3749	
				0			
Drill Pipe	Weight	Thread	ID	Capacity	Grade	Length	Torque
3.5	13.3	IF	2.725	0.007213547	S135	2010.32	1,500
Heavy Weight	Weight	Thread	ID	Capacity	Grade	Length	Torque
3.5	26	IF	2.125	0.004386657	S135	1673.29	1,500
Drill Collar	Weight	Thread	ID	Capacity	Grade	Length	Torque
0	0		0	0	0	0	0
Liner	Weight	Thread	ID	Capacity	Grade	Length	Torque
4.5	11.6	LTC	4	0.015543035	N80	3957.29	2280
Well Data							Open Hole
MD	TVD	KOP	Shoe	Bottom of curve@90	Lateral	Size	Capacity
	3770	2842	7650'	3749'	4201	6.125	0.03644417 bb/ft

FLUIDS

Mud Weight	Mud Type	Fill Fluid	Fill Weight	LCM (if yes-amount- ppg)	Viscosity
8.35	water base	water base	8.35	0	0
Fluid Level in Annulus	PUMP	Elevator	Top Drive	Kelly	Weight
Start	full	TYPE	BPS	X	12k
Change	full	MK1000	73	0.075	

AS RUN IN HOLE WEIGHTS

Liner	Push Pipe	H.W.D.P.	D.P.
Air	Mud	Air	Mud
0	8	0	8
Calculated Neutral Weight including Blocks:		Weight When Released From SF Liner Hanger:	
0		0	
		Pipe Stretch in Inches Before Releasing:	
		0	
Setting Tool Part Number	108720-000001	Frac Port Part Number	121332-000015
Elastomer / Metallurgy		Elastomer / Metallurgy	
Packer Part Number	121381-000001	Other Part No.	
Elastomer / Metallurgy	HSN	Elastomer / Metallurgy	
FTR	NONE	Problem on Job	

Notes: