



KANSAS CORPORATION COMMISSION 1099958
OIL & GAS CONSERVATION DIVISION

Form ACO-1
June 2009

CONFIDENTIAL

WELL COMPLETION FORM
WELL HISTORY - DESCRIPTION OF WELL & LEASE

Form Must Be Typed
Form must be Signed
All blanks must be Filled

OPERATOR: License # 32811
Name: OSAGE Resources, LLC
Address 1: 6209 N Old K-61 Hwy
Address 2:
City: HUTCHINSON State: KS Zip: 67502 + 8608
Contact Person: Brooke Walter
Phone: (620) 860-2224
CONTRACTOR: License # 5929
Name: Duke Drilling Co., Inc.
Wellsite Geologist: Curtis Covey
Purchaser:

Designate Type of Completion:
 New Well Re-Entry Workover
 Oil WSW SWD SIOW
 Gas D&A ENHR SIGW
 OG GSW Temp. Abd.
 CM (Coal Bed Methane)
 Cathodic Other (Core. Expl., etc.):

If Workover/Re-entry: Old Well Info as follows:
Operator:

Well Name:

Original Comp. Date: Original Total Depth:
 Deepening Re-perf. Conv. to ENHR Conv. to SWD
 Conv. to GSW
 Plug Back: Plug Back Total Depth
 Commingled Permit #:
 Dual Completion Permit #:
 SWD Permit #:
 ENHR Permit #:
 GSW Permit #:

10/10/2012	11/2/2012	11/28/2012
Spud Date or Recompletion Date	Date Reached TD	Completion Date or Recompletion Date

API No. 15 - 15-007-23949-01-00

Spot Description:
NE_NE_NW_SE Sec. 25 Twp. 33 S. R. 15 East West
2460 Feet from North / South Line of Section
1521 Feet from East / West Line of Section

Footages Calculated from Nearest Outside Section Corner:
 NE NW SE SW

County: Barber
Lease Name: Osage No. 3315 Well #: 25-03 HC

Field Name:

Producing Formation: Mississippian

Elevation: Ground: 1835 Kelly Bushing: 1852

Total Depth: 5156 Plug Back Total Depth: 1062

Amount of Surface Pipe Set and Cemented at: 208 Feet

Multiple Stage Cementing Collar Used? Yes No

If yes, show depth set: Feet

If Alternate II completion, cement circulated from:

feet depth to: w/ sx cmt.

Drilling Fluid Management Plan

(Data must be collected from the Reserve Pit)

Chloride content: 72000 ppm Fluid volume: 2500 bbls

Dewatering method used: Evaporated

Location of fluid disposal if hauled offsite:

Operator Name:

Lease Name: License #:

Quarter Sec. Twp. S. R. East West

County: Permit #:

AFFIDAVIT

I am the affiant and I hereby certify that all requirements of the statutes, rules and regulations promulgated to regulate the oil and gas industry have been fully complied with and the statements herein are complete and correct to the best of my knowledge.

Submitted Electronically

KCC Office Use ONLY

Letter of Confidentiality Received
Date: 12/10/2012
 Confidential Release Date:
 Wireline Log Received
 Geologist Report Received
 UIC Distribution
ALT I II III Approved by: NAOMI JAMES Date: 12/13/2012

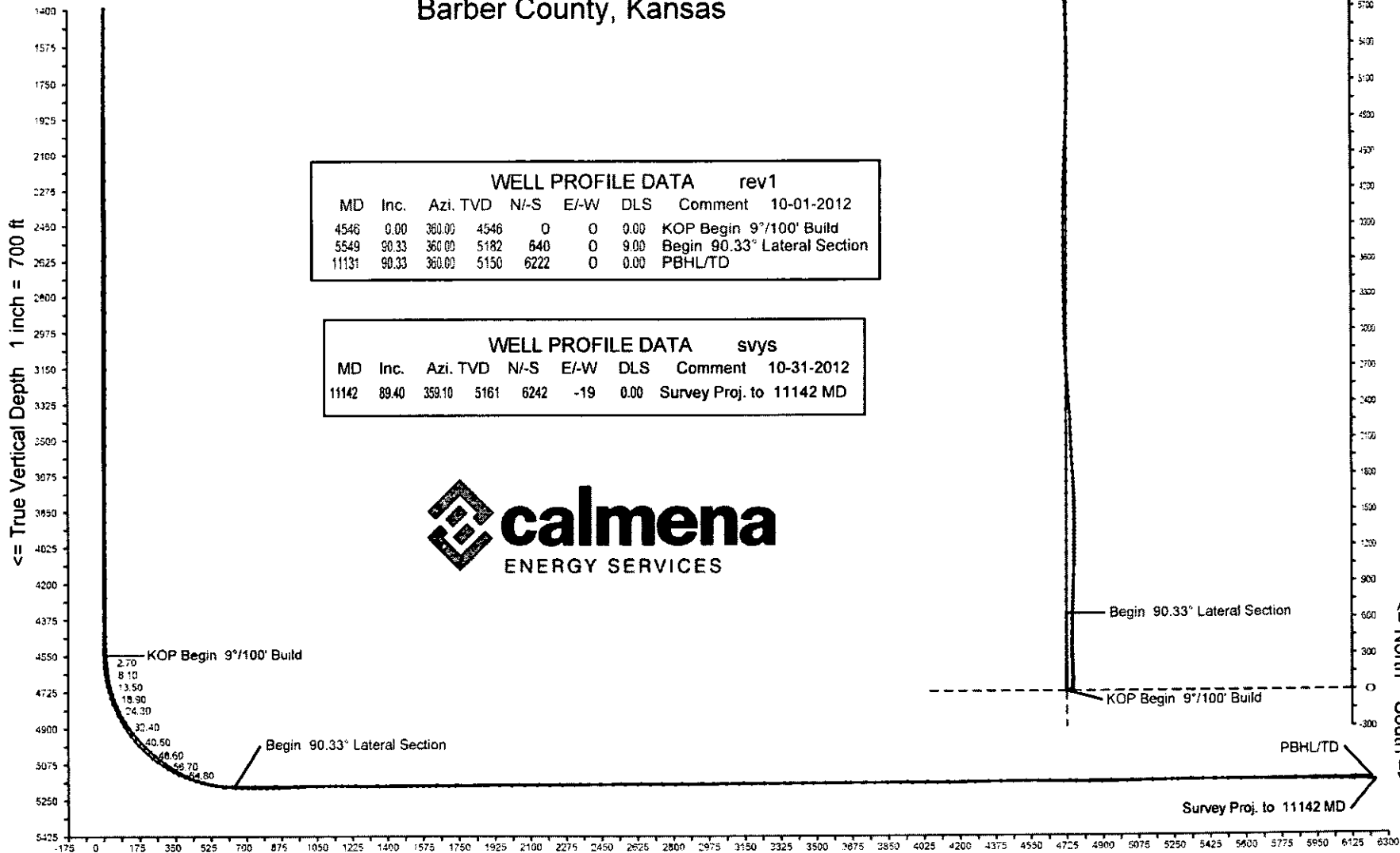
Osage Resources

Osage No. 25-03 HC

Barber County, Kansas

<= West East => 1 inch = 1200 ft

Survey Proj. to 11142 MD PBHL/TD



WELL PROFILE DATA rev1								
MD	Inc.	Azi.	TVD	N/-S	E/-W	DLS	Comment	10-01-2012
4546	0.00	360.00	4546	0	0	0.00	KOP Begin 9°/100' Build	
5549	90.33	360.00	5182	640	0	9.00	Begin 90.33° Lateral Section	
11131	90.33	360.00	5150	6222	0	0.00	PBHL/TD	

WELL PROFILE DATA svys								
MD	Inc.	Azi.	TVD	N/-S	E/-W	DLS	Comment	10-31-2012
11142	89.40	359.10	5161	6242	-19	0.00	Survey Proj. to 11142 MD	



<= North South =>

Vertical Section on 0 deg azimuth with reference 0.00 N, 0.00 E

Calmena Energy Services

Company: Osage Resources
 Well: Osage No. 25-03 HC
 Location:

Date: 31-Oct-2012
 Surveys
 Page 1
 Job# : 6785

MD (feet)	Inclination (degrees)	Azimuth (degrees)	TVD RKB (feet)	N/-S (feet)	E/-W (feet)	DLS (deg/100')	VS @ 0.00° Az (feet)	Comments
Surface Location								RKB=1848
0.00	0.00	0.00	0.00	0.00	0.00	0.00	0.00	
249.00	1.30	78.10	248.98	0.58	2.76	0.52	0.58	
280.00	1.40	78.10	279.97	0.73	3.48	0.32	0.73	
311.00	1.30	76.40	310.96	0.89	4.19	0.35	0.89	
342.00	0.90	24.90	341.96	1.20	4.64	3.29	1.20	
374.00	1.30	76.70	373.95	1.51	5.09	3.21	1.51	
405.00	1.30	87.60	404.94	1.60	5.79	0.80	1.60	
436.00	1.30	82.50	435.94	1.67	6.49	0.37	1.67	
467.00	1.30	78.30	466.93	1.78	7.18	0.31	1.78	
560.00	1.50	85.00	559.90	2.10	9.43	0.28	2.10	
653.00	1.70	79.00	652.86	2.47	11.99	0.28	2.47	
746.00	1.70	89.70	745.82	2.74	14.73	0.34	2.74	
838.00	1.80	91.80	837.78	2.70	17.54	0.13	2.70	
931.00	1.70	99.20	930.74	2.44	20.36	0.27	2.44	
1023.00	1.70	97.80	1022.70	2.03	23.06	0.05	2.03	
1115.00	1.70	97.30	1114.66	1.68	25.76	0.02	1.68	
1207.00	1.20	75.30	1206.63	1.75	28.05	0.80	1.75	
1300.00	1.10	68.80	1299.61	2.32	29.82	0.18	2.32	
1392.00	1.20	72.20	1391.59	2.93	31.56	0.13	2.93	
1484.00	1.00	74.40	1483.57	3.44	33.25	0.22	3.44	
1577.00	1.00	79.50	1576.56	3.81	34.83	0.10	3.81	
1669.00	0.90	82.90	1668.55	4.04	36.34	0.12	4.04	
1761.00	1.10	89.20	1760.53	4.14	37.94	0.25	4.14	
1853.00	1.10	40.70	1852.52	4.83	39.40	0.98	4.83	
1946.00	1.10	48.10	1945.50	6.10	40.64	0.15	6.10	
2038.00	0.80	55.50	2037.49	7.05	41.83	0.35	7.05	
2131.00	0.60	45.80	2130.48	7.76	42.71	0.25	7.76	
2224.00	0.50	40.00	2223.48	8.41	43.32	0.12	8.41	
2318.00	0.40	43.00	2317.47	8.96	43.81	0.11	8.96	
2410.00	0.40	71.50	2409.47	9.30	44.34	0.21	9.30	

Calmena Energy Services

Company: Osage Resources
 Well: Osage No. 25-03 HC
 Location:

Date: 31-Oct-2012
 Surveys
 Page 2
 Job# : 6785

MD (feet)	Inclination (degrees)	Azimuth (degrees)	TVD RKB (feet)	N/-S (feet)	E/-W (feet)	DLS (deg/100')	VS @ 0.00° Az (feet)	Comments
2503.00	0.50	68.80	2502.47	9.55	45.02	0.11	9.55	
2596.00	0.40	43.20	2595.46	9.93	45.62	0.24	9.93	
2689.00	0.30	34.20	2688.46	10.37	45.98	0.12	10.37	
2781.00	0.50	49.80	2780.46	10.83	46.42	0.25	10.83	
2874.00	0.40	44.40	2873.46	11.32	46.96	0.12	11.32	
2966.00	0.30	146.50	2965.46	11.35	47.32	0.60	11.35	
3058.00	0.50	202.90	3057.46	10.78	47.30	0.45	10.78	
3151.00	0.20	185.70	3150.45	10.25	47.12	0.34	10.25	
3246.00	0.30	209.60	3245.45	9.87	46.98	0.15	9.87	
3339.00	0.20	184.30	3338.45	9.49	46.85	0.16	9.49	
3432.00	0.30	181.30	3431.45	9.09	46.83	0.11	9.09	
3524.00	0.30	192.70	3523.45	8.61	46.77	0.06	8.61	
3617.00	0.30	238.40	3616.45	8.25	46.51	0.25	8.25	
3710.00	0.50	144.40	3709.45	7.79	46.54	0.65	7.79	
3803.00	0.70	117.50	3802.44	7.20	47.28	0.37	7.20	
3896.00	0.60	100.30	3895.44	6.85	48.26	0.23	6.85	
3989.00	0.30	84.30	3988.43	6.78	48.99	0.35	6.78	
4081.00	0.40	81.80	4080.43	6.85	49.54	0.11	6.85	
4174.00	0.30	66.70	4173.43	7.00	50.09	0.15	7.00	
4267.00	0.20	56.00	4266.43	7.18	50.45	0.12	7.18	
4360.00	0.30	47.20	4359.43	7.44	50.76	0.11	7.44	
4453.00	0.40	35.40	4452.43	7.87	51.13	0.13	7.87	
4487.00	0.70	17.30	4486.42	8.16	51.26	1.01	8.16	
4518.00	1.10	6.60	4517.42	8.64	51.35	1.39	8.64	
4549.00	2.60	358.70	4548.40	9.64	51.37	4.90	9.64	
4580.00	4.30	1.90	4579.35	11.50	51.39	5.52	11.50	
4611.00	6.30	2.60	4610.21	14.37	51.50	6.45	14.37	
4642.00	8.60	2.80	4640.95	18.38	51.69	7.42	18.38	
4673.00	11.30	2.60	4671.48	23.73	51.95	8.71	23.73	
4704.00	14.40	2.10	4701.70	30.62	52.22	10.01	30.62	

Calmena Energy Services

Company: Osage Resources
 Well: Osage No. 25-03 HC
 Location:

Date: 31-Oct-2012
 Surveys
 Page 3
 Job# : 6785

MD (feet)	Inclination (degrees)	Azimuth (degrees)	TVD RKB (feet)	N-S (feet)	E-W (feet)	DLS (deg/100')	VS @ 0.00° Az (feet)	Comments
4735.00	17.40	1.90	4731.51	39.10	52.52	9.68	39.10	
4766.00	20.50	2.10	4760.83	49.16	52.87	10.00	49.16	
4797.00	23.40	2.20	4789.58	60.74	53.31	9.36	60.74	
4827.00	26.40	1.70	4816.78	73.36	53.73	10.02	73.36	
4858.00	29.50	0.60	4844.17	87.89	54.02	10.14	87.89	
4889.00	32.40	359.80	4870.75	103.83	54.07	9.45	103.83	
4921.00	35.50	358.70	4897.29	121.70	53.83	9.88	121.70	
4952.00	38.30	357.80	4922.08	140.30	53.26	9.20	140.30	
4983.00	41.20	357.30	4945.91	160.10	52.41	9.41	160.10	
5014.00	44.00	357.30	4968.73	181.06	51.42	9.03	181.06	
5045.00	46.70	357.30	4990.51	203.09	50.38	8.71	203.09	
5076.00	48.70	357.70	5011.37	225.99	49.38	6.52	225.99	
5107.00	50.60	357.70	5031.44	249.60	48.43	6.13	249.60	
5137.00	52.20	358.40	5050.16	273.03	47.64	5.64	273.03	
5168.00	54.20	358.90	5068.73	297.84	47.05	6.58	297.84	
5200.00	56.40	359.40	5086.94	324.15	46.66	6.99	324.15	
5231.00	59.10	359.90	5103.48	350.36	46.50	8.82	350.36	
5262.00	62.10	0.60	5118.70	377.36	46.62	9.88	377.36	
5292.00	65.40	0.80	5131.97	404.26	46.95	11.02	404.26	
5322.00	68.10	1.20	5143.81	431.82	47.44	9.08	431.82	
5354.00	71.30	0.60	5154.91	461.83	47.91	10.15	461.83	
5383.00	73.90	0.50	5163.58	489.50	48.17	8.97	489.50	
5415.00	76.70	0.10	5171.70	520.44	48.33	8.83	520.44	
5447.00	79.70	0.50	5178.24	551.76	48.50	9.45	551.76	
5477.00	82.70	1.20	5182.83	581.40	48.94	10.26	581.40	
5491.00	84.20	1.50	5184.43	595.31	49.27	10.92	595.31	
5541.00	87.80	2.20	5187.92	645.15	50.88	7.33	645.15	
5572.00	88.40	2.20	5188.94	676.11	52.07	1.94	676.11	
5603.00	88.70	1.90	5189.73	707.08	53.17	1.37	707.08	
5634.00	89.20	2.20	5190.30	738.06	54.28	1.88	738.06	

Calmena Energy Services

Company: Osage Resources
 Well: Osage No. 25-03 HC
 Location:

Date: 31-Oct-2012
 Surveys
 Page 4
 Job# : 6785

MD (feet)	Inclination (degrees)	Azimuth (degrees)	TVD RKB (feet)	N/-S (feet)	E/-W (feet)	DLS (deg/100')	VS @ 0.00° Az (feet)	Comments
5665.00	90.00	2.20	5190.51	769.03	55.47	2.58	769.03	
5696.00	90.90	2.10	5190.27	800.01	56.64	2.92	800.01	
5727.00	91.40	2.10	5189.65	830.98	57.77	1.61	830.98	
5758.00	91.60	1.90	5188.84	861.95	58.85	0.91	861.95	
5850.00	92.60	1.50	5185.47	953.85	61.58	1.17	953.85	
5943.00	91.80	1.00	5181.90	1046.76	63.61	1.01	1046.76	
5974.00	92.00	0.80	5180.87	1077.74	64.09	0.91	1077.74	
6005.00	92.20	0.50	5179.73	1108.71	64.45	1.16	1108.71	
6036.00	90.00	0.10	5179.14	1139.71	64.61	7.21	1139.71	
6067.00	88.40	359.90	5179.57	1170.70	64.61	5.20	1170.70	
6098.00	88.40	359.90	5180.43	1201.69	64.55	0.00	1201.69	
6129.00	88.70	0.10	5181.22	1232.68	64.55	1.16	1232.68	
6161.00	89.30	359.80	5181.78	1264.68	64.53	2.10	1264.68	
6192.00	89.90	0.50	5181.99	1295.67	64.61	2.97	1295.67	
6223.00	90.10	0.50	5181.99	1326.67	64.88	0.65	1326.67	
6254.00	90.00	0.50	5181.97	1357.67	65.15	0.32	1357.67	
6284.00	90.00	359.90	5181.97	1387.67	65.25	2.00	1387.67	
6315.00	90.20	359.80	5181.91	1418.67	65.17	0.72	1418.67	
6347.00	90.20	359.80	5181.80	1450.67	65.06	0.00	1450.67	
6377.00	90.40	359.20	5181.64	1480.67	64.80	2.11	1480.67	
6408.00	90.50	359.10	5181.40	1511.67	64.34	0.46	1511.67	
6439.00	90.70	358.70	5181.08	1542.66	63.74	1.44	1542.66	
6470.00	90.60	358.90	5180.72	1573.65	63.09	0.72	1573.65	
6501.00	90.80	358.50	5180.35	1604.64	62.39	1.44	1604.64	
6533.00	91.00	358.40	5179.84	1636.62	61.53	0.70	1636.62	
6564.00	90.70	357.50	5179.38	1667.60	60.42	3.06	1667.60	
6595.00	90.70	356.80	5179.00	1698.56	58.88	2.26	1698.56	
6626.00	90.70	356.80	5178.63	1729.51	57.15	0.00	1729.51	
6656.00	90.90	357.10	5178.21	1759.46	55.55	1.20	1759.46	
6719.00	90.00	356.20	5177.71	1822.35	51.87	2.02	1822.35	

Calmena Energy Services

Company: Osage Resources
 Well: Osage No. 25-03 HC
 Location:

Date: 31-Oct-2012
 Surveys
 Page 5
 Job# : 6785

MD (feet)	Inclination (degrees)	Azimuth (degrees)	TVD RKB (feet)	N/-S (feet)	E/-W (feet)	DLS (deg/100')	VS @ 0.00° Az (feet)	Comments
6780.00	89.20	356.60	5178.14	1883.23	48.04	1.47	1883.23	
6842.00	89.50	356.80	5178.84	1945.12	44.47	0.58	1945.12	
6903.00	90.20	357.00	5179.00	2006.03	41.17	1.19	2006.03	
6965.00	91.20	357.10	5178.24	2067.94	37.98	1.62	2067.94	
7027.00	90.00	357.80	5177.59	2129.88	35.22	2.24	2129.88	
7089.00	90.40	357.70	5177.38	2191.83	32.79	0.67	2191.83	
7151.00	90.70	357.50	5176.78	2253.77	30.19	0.58	2253.77	
7213.00	90.90	357.10	5175.92	2315.70	27.27	0.72	2315.70	
7275.00	90.20	356.40	5175.32	2377.59	23.76	1.60	2377.59	
7337.00	90.20	356.20	5175.11	2439.46	19.76	0.32	2439.46	
7399.00	90.70	356.10	5174.62	2501.32	15.59	0.82	2501.32	
7461.00	89.70	355.00	5174.40	2563.13	10.78	2.40	2563.13	
7522.00	89.50	355.40	5174.83	2623.92	5.68	0.73	2623.92	
7584.00	89.80	356.20	5175.21	2685.75	1.14	1.38	2685.75	
7646.00	90.70	356.60	5174.94	2747.63	-2.76	1.59	2747.63	
7708.00	91.10	357.00	5173.96	2809.52	-6.22	0.91	2809.52	
7770.00	90.40	358.00	5173.15	2871.46	-8.92	1.97	2871.46	
7832.00	90.60	357.70	5172.61	2933.41	-11.25	0.58	2933.41	
7894.00	90.50	359.40	5172.01	2995.38	-12.81	2.75	2995.38	
7956.00	90.90	359.80	5171.26	3057.38	-13.25	0.91	3057.38	
8017.00	90.30	359.60	5170.62	3118.37	-13.57	1.04	3118.37	
8079.00	89.90	359.40	5170.51	3180.37	-14.11	0.72	3180.37	
8141.00	90.00	359.20	5170.56	3242.37	-14.87	0.36	3242.37	
8203.00	90.20	359.10	5170.46	3304.36	-15.79	0.36	3304.36	
8266.00	91.20	358.70	5169.69	3367.34	-16.99	1.71	3367.34	
8327.00	90.90	359.20	5168.57	3428.32	-18.11	0.96	3428.32	
8379.00	90.50	359.90	5167.93	3480.32	-18.52	1.55	3480.32	
8440.00	90.80	359.60	5167.24	3541.31	-18.79	0.70	3541.31	
8501.00	90.30	359.60	5166.66	3602.31	-19.21	0.82	3602.31	
8562.00	90.00	359.40	5166.50	3663.30	-19.75	0.59	3663.30	

Calmena Energy Services

Company: Osage Resources
 Well: Osage No. 25-03 HC
 Location:

Date: 31-Oct-2012
 Surveys
 Page 6
 Job# : 6785

MD (feet)	Inclination (degrees)	Azimuth (degrees)	TVD RKB (feet)	N-S (feet)	E-W (feet)	DLS (deg/100')	VS @ 0.00° Az (feet)	Comments
8623.00	90.30	359.20	5166.34	3724.30	-20.49	0.59	3724.30	
8683.00	89.70	359.20	5166.34	3784.29	-21.33	1.00	3784.29	
8743.00	89.50	359.90	5166.75	3844.29	-21.80	1.21	3844.29	
8804.00	89.50	0.50	5167.29	3905.29	-21.59	0.98	3905.29	
8864.00	90.30	0.30	5167.39	3965.28	-21.17	1.37	3965.28	
8925.00	90.30	0.10	5167.07	4026.28	-20.95	0.33	4026.28	
8987.00	90.10	359.80	5166.86	4088.28	-21.01	0.58	4088.28	
9049.00	89.90	1.30	5166.86	4150.28	-20.41	2.44	4150.28	
9111.00	91.10	1.70	5166.31	4212.25	-18.79	2.04	4212.25	
9173.00	91.30	1.30	5165.02	4274.22	-17.17	0.72	4274.22	
9235.00	91.50	1.50	5163.50	4336.18	-15.65	0.46	4336.18	
9297.00	91.50	1.30	5161.88	4398.14	-14.14	0.32	4398.14	
9359.00	90.70	1.90	5160.69	4460.10	-12.41	1.61	4460.10	
9421.00	90.70	2.40	5159.93	4522.06	-10.08	0.81	4522.06	
9483.00	88.90	2.10	5160.15	4584.01	-7.65	2.94	4584.01	
9544.00	88.90	1.90	5161.32	4644.96	-5.52	0.33	4644.96	
9606.00	89.10	1.50	5162.40	4706.92	-3.68	0.72	4706.92	
9668.00	89.50	2.10	5163.16	4768.88	-1.73	1.16	4768.88	
9731.00	89.80	2.20	5163.54	4831.84	0.63	0.50	4831.84	
9793.00	90.30	2.60	5163.49	4893.78	3.23	1.03	4893.78	
9855.00	91.80	1.90	5162.35	4955.72	5.66	2.67	4955.72	
9917.00	91.20	1.00	5160.73	5017.68	7.23	1.74	5017.68	
9980.00	91.00	0.50	5159.52	5080.66	8.05	0.85	5080.66	
10042.00	91.10	0.50	5158.38	5142.65	8.59	0.16	5142.65	
10104.00	91.70	0.50	5156.87	5204.63	9.13	0.97	5204.63	
10166.00	91.50	358.50	5155.14	5266.60	8.59	3.24	5266.60	
10228.00	90.00	357.80	5154.33	5328.56	6.59	2.67	5328.56	
10289.00	89.70	357.70	5154.49	5389.51	4.20	0.52	5389.51	
10351.00	90.00	358.00	5154.65	5451.47	1.87	0.68	5451.47	
10413.00	89.80	358.00	5154.76	5513.43	-0.29	0.32	5513.43	

Calmena Energy Services

Company: Osage Resources
 Well: Osage No. 25-03 HC
 Location:

Date: 31-Oct-2012
 Surveys
 Page 7
 Job# : 6785

MD (feet)	Inclination (degrees)	Azimuth (degrees)	TVD RKB (feet)	N/-S (feet)	E/-W (feet)	DLS (deg/100')	VS @ 0.00° Az (feet)	Comments
10475.00	89.90	357.80	5154.92	5575.39	-2.56	0.36	5575.39	
10538.00	89.80	357.70	5155.08	5638.34	-5.04	0.22	5638.34	
10601.00	90.00	357.80	5155.19	5701.29	-7.51	0.35	5701.29	
10662.00	89.60	358.20	5155.41	5762.25	-9.64	0.93	5762.25	
10724.00	90.10	357.80	5155.57	5824.22	-11.80	1.03	5824.22	
10786.00	89.00	358.50	5156.06	5886.18	-13.81	2.10	5886.18	
10848.00	88.90	359.60	5157.19	5948.16	-14.83	1.78	5948.16	
10909.00	88.80	359.40	5158.42	6009.15	-15.37	0.37	6009.15	
10971.00	89.20	359.40	5159.50	6071.13	-16.01	0.65	6071.13	
11033.00	89.40	359.10	5160.26	6133.12	-16.83	0.58	6133.12	
11142.00	89.40	359.10	5161.40	6242.10	-18.54	0.00	6242.10	