



KANSAS CORPORATION COMMISSION 1102278  
 OIL & GAS CONSERVATION DIVISION

Form ACO-1  
 June 2009

**CONFIDENTIAL**

**WELL COMPLETION FORM**

Form Must Be Typed  
 Form must be Signed  
 All blanks must be Filled

**WELL HISTORY - DESCRIPTION OF WELL & LEASE**

OPERATOR: License # 34715  
 Name: Dorado E&P Partners, LLC  
 Address 1: 1401 17th ST., STE 1500  
 Address 2:  
 City: DENVER State: CO Zip: 80202 +  
 Contact Person: TINA MILLER  
 Phone: ( 720 ) 402-3693  
 CONTRACTOR: License # 5929  
 Name: Duke Drilling Co., Inc.  
 Wellsite Geologist: Chris Spencer - Hembros Hydrocarbons  
 Purchaser: NCRA / West Wichita Gas Gathering  
 Designate Type of Completion:

- New Well  Re-Entry  Workover
- Oil  WSW  SWD  SIOW
- Gas  D&A  ENHR  SIGW
- OG  GSW  Temp. Abd.
- CM (Coal Bed Methane)
- Cathodic  Other (Core, Expl., etc.):

If Workover/Re-entry: Old Well Info as follows:  
 Operator:

Well Name:

- Original Comp. Date: Original Total Depth:
- Deepening  Re-perf.  Conv. to ENHR  Conv. to SWD
  - Conv. to GSW
  - Plug Back: Plug Back Total Depth
  - Commingled Permit #:
  - Dual Completion Permit #:
  - SWD Permit #:
  - ENHR Permit #:
  - GSW Permit #:

08/22/2012	09/12/2012	10/28/2012
Spud Date or Recompletion Date	Date Reached TD	Completion Date or Recompletion Date

API No. 15 - 15-155-21595-01-00

Spot Description:  
 SW SE SE SW Sec. 6 Twp. 25 S. R. 9  East  West  
 150 Feet from  North /  South Line of Section  
 2080 Feet from  East /  West Line of Section

Footages Calculated from Nearest Outside Section Corner:  
 NE  NW  SE  SW

County: Reno  
 Lease Name: Preisser Well #: 25-9-6-1H

Field Name:

Producing Formation: MISSISSIPPIAN  
 Elevation: Ground: 1721 Kelly Bushing: 1733

Total Depth: 8350 Plug Back Total Depth:

Amount of Surface Pipe Set and Cemented at: 250 Feet

Multiple Stage Cementing Collar Used?  Yes  No

If yes, show depth set: Feet

If Alternate II completion, cement circulated from: feet depth to: w/ sx cmt.

**Drilling Fluid Management Plan**

(Data must be collected from the Reserve Pit)

Chloride content: 40000 ppm Fluid volume: 6790 bbls

Dewatering method used: Hauled to Disposal

Location of fluid disposal if hauled offsite:

Operator Name: Reh Oil & Gas

Lease Name: Harrell D SWD License #: 32556

Quarter NE Sec. 27 Twp. 29 S. R. 13  East  West

County: Pratt Permit #: D-20005

**AFFIDAVIT**

I am the affiant and I hereby certify that all requirements of the statutes, rules and regulations promulgated to regulate the oil and gas industry have been fully complied with and the statements herein are complete and correct to the best of my knowledge.

Submitted Electronically

**KCC Office Use ONLY**

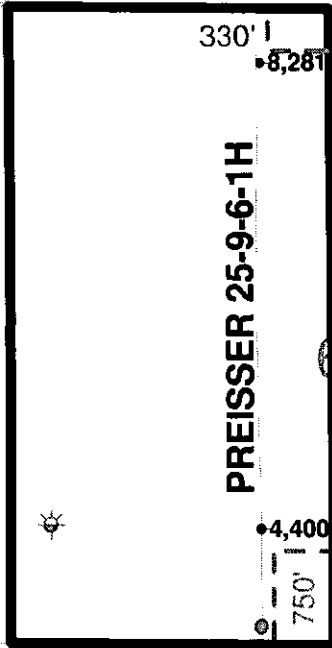
- Letter of Confidentiality Received Date: 12/10/2012
- Confidential Release Date:
- Wireline Log Received
- Geologist Report Received
- UIC Distribution
- ALT  I  II  III Approved by: NAOMI JAMES Date: 12/14/2012

36

31

32

**Pooled Unit Outline**



330'

8,281'

Setback

**MSSP Bottom Perf @ 8,281'**

**PREISSER 25-9-6-1H**

4,400'

750'

**MSSP Top Perf @ 4,400'**

Setback

1

5

12

7



**PREISSER 1H**

Reno County, Kansas

Surf: 150 fsl, 2080 fwl Sec. 6, T25S-R9W

Bot: 330 fsl, 2080 fwl Sec. 6, T25S-R9W

**WELL SYMBOLS**

- Dry Hole, With Show of Gas
- Dry Hole, With Show of Oil & Gas
- Dry Hole, With Show of Oil
- Dry Hole
- Oil Well
- New Symbol

**REMARKS**

Dorado Permit Location: Preisser25-9-6-1H  
Completion map  
KB 1.733

By: SCJ

December 13, 2012

# Well Report



Company : Dorado E&P Partners  
 Well : Preisser 25-9-6 1H  
 Location : Reno County Kansas  
 Reference: Grid North

Page: 1  
 Date : 9/11/2012  
 File : OK 12129

Vertical Section Calculated Along Azimuth 0.00°										
KB Elevation = 1733.00ft GR. Elevation = 1721.00ft										
	MD	Inc	Azi	TVD	North	East	V'Sect	D'Leg	Build	Turn
	ft	deg	deg	ft	ft	ft	ft	%100	%100	%100
0	0.00	0.00	0.00	0.00	0.00	0.00	0.00	0.00	0.00	0.00
1	1619.00	0.40	69.50	1618.99	1.98	5.29	1.98	0.02	0.02	4.29
2	2155.00	0.30	49.90	2154.98	3.54	8.12	3.54	0.03	-0.02	-3.66
3	2559.00	0.30	126.50	2558.97	3.59	9.78	3.59	0.09	0.00	18.96
4	3149.00	0.50	154.00	3148.96	0.36	12.15	0.36	0.05	0.03	4.66
5	3166.00	0.70	124.20	3165.96	0.23	12.27	0.23	2.14	1.18	-175.29
6	3197.00	0.50	111.10	3196.96	0.08	12.55	0.08	0.78	-0.65	-42.26
7	3228.00	1.60	3.40	3227.95	0.46	12.70	0.46	5.86	3.55	-347.42
8	3259.00	5.30	358.50	3258.89	2.32	12.69	2.32	11.96	11.94	-15.81
9	3290.00	9.00	1.30	3289.64	6.18	12.71	6.18	11.98	11.94	9.03
10	3321.00	11.60	3.40	3320.14	11.72	12.95	11.72	8.47	8.39	6.77
11	3352.00	14.20	2.30	3350.36	18.63	13.28	18.63	8.42	8.39	-3.55
12	3383.00	16.20	358.90	3380.27	26.75	13.35	26.75	7.06	6.45	-10.97
13	3414.00	18.50	356.90	3409.86	35.99	13.01	35.99	7.66	7.42	-6.45
14	3445.00	21.50	356.90	3438.99	46.58	12.43	46.58	9.68	9.68	0.00
15	3476.00	24.40	358.00	3467.53	58.65	11.90	58.65	9.46	9.35	3.55
16	3507.00	27.50	359.10	3495.40	72.21	11.57	72.21	10.12	10.00	3.55
17	3538.00	30.70	359.40	3522.48	87.28	11.37	87.28	10.33	10.32	0.97
18	3569.00	33.20	359.80	3548.79	103.68	11.26	103.68	8.09	8.06	1.29
19	3600.00	35.90	359.60	3574.32	121.26	11.16	121.26	8.72	8.71	-0.65
20	3631.00	38.70	359.20	3598.97	140.05	10.97	140.05	9.07	9.03	-1.29
21	3663.00	41.30	359.10	3623.49	160.61	10.66	160.61	8.13	8.13	-0.31
22	3694.00	43.80	359.30	3646.32	181.57	10.37	181.57	8.08	8.06	0.65
23	3725.00	45.90	359.60	3668.30	203.43	10.16	203.43	6.81	6.77	0.97
24	3756.00	47.70	359.40	3689.52	226.03	9.96	226.03	5.83	5.81	-0.65
25	3787.00	49.60	359.40	3710.00	249.30	9.72	249.30	6.13	6.13	0.00
26	3818.00	52.10	359.00	3729.57	273.33	9.38	273.33	8.13	8.06	-1.29
27	3849.00	54.50	359.20	3748.09	298.18	8.99	298.18	7.76	7.74	0.65
28	3879.00	56.20	358.50	3765.15	322.86	8.49	322.86	5.98	5.67	-2.33
29	3910.00	58.60	358.80	3781.85	348.96	7.88	348.96	7.78	7.74	0.97
30	3941.00	62.00	359.00	3797.21	375.88	7.36	375.88	10.98	10.97	0.65
31	3972.00	64.70	358.50	3811.11	403.58	6.76	403.58	8.83	8.71	-1.61
32	4003.00	67.30	359.00	3823.72	431.89	6.14	431.89	8.52	8.39	1.61
33	4034.00	69.50	359.80	3835.13	460.71	5.84	460.71	7.49	7.10	2.58
34	4065.00	70.50	359.70	3845.73	489.84	5.71	489.84	3.24	3.23	-0.32
35	4096.00	71.20	359.40	3855.90	519.12	5.48	519.12	2.44	2.26	-0.97

# Well Report



Company : Dorado E&P Partners  
 Well : Preisser 25-9-6 1H  
 Location : Reno County Kansas  
 Reference: Grid North

Page: 2  
 Date : 9/11/2012  
 File : OK 12129

### Vertical Section Calculated Along Azimuth 0.00°

	MD ft	KB Elevation = 1733.00ft			GR. Elevation = 1721.00ft			D'Leg %/100	Build %/100	Turn %/100
		Inc deg	Azi deg	TVD ft	North ft	East ft	V'Sect ft			
36	4127.00	71.60	359.00	3865.79	548.50	5.07	548.50	1.78	1.29	-1.29
37	4158.00	72.20	359.10	3875.42	577.96	4.59	577.96	1.96	1.94	0.32
38	4189.00	73.40	358.90	3884.59	607.57	4.07	607.57	3.92	3.87	-0.65
39	4220.00	76.40	359.00	3892.66	637.49	3.52	637.49	9.68	9.68	0.32
40	4251.00	78.30	359.20	3899.45	667.73	3.05	667.73	6.16	6.13	0.65
41	4282.00	81.00	359.60	3905.02	698.22	2.73	698.22	8.80	8.71	1.29
42	4313.00	84.00	0.20	3909.06	728.96	2.67	728.96	9.87	9.68	1.94
43	4344.00	85.50	0.40	3911.90	759.82	2.83	759.82	4.88	4.84	0.65
44	4375.00	87.00	1.10	3913.93	790.75	3.24	790.75	5.34	4.84	2.26
45	4429.00	89.10	359.90	3915.77	844.72	3.71	844.72	4.48	3.89	-2.22
46	4460.00	89.60	0.20	3916.12	875.71	3.74	875.71	1.88	1.61	0.97
47	4491.00	89.90	0.30	3916.25	906.71	3.87	906.71	1.02	0.97	0.32
48	4522.00	89.30	359.80	3916.47	937.71	3.90	937.71	2.52	-1.94	-1.61
49	4553.00	89.20	0.00	3916.87	968.71	3.85	968.71	0.72	-0.32	0.65
50	4584.00	89.00	0.30	3917.36	999.71	3.93	999.71	1.16	-0.65	0.97
51	4615.00	87.90	0.20	3918.20	1030.69	4.06	1030.69	3.56	-3.55	-0.32
52	4646.00	86.90	359.90	3919.61	1061.66	4.09	1061.66	3.37	-3.23	-0.97
53	4677.00	86.80	359.40	3921.31	1092.61	3.90	1092.61	1.64	-0.32	-1.61
54	4708.00	86.90	359.10	3923.01	1123.56	3.49	1123.56	1.02	0.32	-0.97
55	4739.00	87.10	358.90	3924.64	1154.52	2.95	1154.52	0.91	0.65	-0.65
56	4770.00	86.40	358.90	3926.39	1185.46	2.36	1185.46	2.26	-2.26	0.00
57	4801.00	86.10	359.10	3928.42	1216.39	1.82	1216.39	1.16	-0.97	0.65
58	4832.00	85.40	358.60	3930.72	1247.30	1.20	1247.30	2.77	-2.26	-1.61
59	4863.00	84.20	358.60	3933.53	1278.16	0.45	1278.16	3.87	-3.87	0.00
60	4894.00	84.20	358.70	3936.66	1308.99	-0.28	1308.99	0.32	0.00	0.32
61	4925.00	84.70	358.70	3939.66	1339.84	-0.98	1339.84	1.61	1.61	0.00
62	4956.00	85.20	358.30	3942.39	1370.71	-1.79	1370.71	2.06	1.61	-1.29
63	4987.00	85.80	358.60	3944.82	1401.60	-2.62	1401.60	2.16	1.94	0.97
64	5018.00	86.30	358.60	3946.96	1432.52	-3.38	1432.52	1.61	1.61	0.00
65	5049.00	86.80	358.70	3948.82	1463.45	-4.11	1463.45	1.64	1.61	0.32
66	5080.00	87.20	358.50	3950.44	1494.40	-4.87	1494.40	1.44	1.29	-0.65
67	5111.00	88.30	358.30	3951.66	1525.37	-5.73	1525.37	3.61	3.55	-0.65
68	5142.00	89.50	358.40	3952.26	1556.35	-6.62	1556.35	3.88	3.87	0.32
69	5173.00	90.30	358.70	3952.31	1587.34	-7.41	1587.34	2.76	2.58	0.97
70	5204.00	91.40	358.90	3951.85	1618.33	-8.06	1618.33	3.61	3.55	0.65
71	5235.00	92.20	358.90	3950.88	1649.31	-8.65	1649.31	2.58	2.58	0.00

# Well Report



Company : Dorado E&P Partners  
 Well : Preisser 25-9-6 1H  
 Location : Reno County Kansas  
 Reference: Grid North

Page: 3  
 Date: 9/11/2012  
 File : OK 12129

### Vertical Section Calculated Along Azimuth 0.00°

	KB Elevation = 1733.00ft				GR. Elevation = 1721.00ft					
	MD	Inc	Azi	TVD	North	East	V'Sect	D'Leg	Build	Turn
	ft	deg	deg	ft	ft	ft	ft	%100	%100	%100
72	5266.00	93.00	358.90	3949.47	1680.27	-9.25	1680.27	2.58	2.58	0.00
73	5297.00	93.40	359.20	3947.74	1711.21	-9.76	1711.21	1.61	1.29	0.97
74	5327.00	94.70	359.20	3945.62	1741.14	-10.18	1741.14	4.33	4.33	0.00
75	5358.00	95.50	359.30	3942.86	1772.01	-10.58	1772.01	2.60	2.58	0.32
76	5389.00	95.60	359.60	3939.87	1802.86	-10.88	1802.86	1.02	0.32	0.97
77	5420.00	94.70	0.10	3937.08	1833.74	-10.96	1833.74	3.32	-2.90	1.61
78	5451.00	94.60	359.90	3934.57	1864.64	-10.96	1864.64	0.72	-0.32	-0.65
79	5482.00	95.20	0.10	3931.92	1895.52	-10.96	1895.52	2.04	1.94	0.65
80	5513.00	94.20	359.40	3929.38	1926.42	-11.09	1926.42	3.93	-3.23	-2.26
81	5544.00	92.60	359.60	3927.54	1957.36	-11.36	1957.36	5.20	-5.16	0.65
82	5575.00	91.40	359.70	3926.46	1988.34	-11.55	1988.34	3.88	-3.87	0.32
83	5606.00	91.20	359.90	3925.76	2019.33	-11.66	2019.33	0.91	-0.65	0.65
84	5636.00	91.40	0.00	3925.08	2049.32	-11.69	2049.32	0.75	0.67	0.33
85	5667.00	91.80	359.80	3924.21	2080.31	-11.74	2080.31	1.44	1.29	-0.65
86	5698.00	92.20	359.70	3923.13	2111.29	-11.88	2111.29	1.33	1.29	-0.32
87	5729.00	92.30	359.60	3921.91	2142.27	-12.07	2142.27	0.46	0.32	-0.32
88	5760.00	91.10	359.30	3920.99	2173.25	-12.36	2173.25	3.99	-3.87	-0.97
89	5791.00	90.90	359.20	3920.45	2204.25	-12.77	2204.25	0.72	-0.65	-0.32
90	5822.00	90.50	359.50	3920.07	2235.24	-13.12	2235.24	1.61	-1.29	0.97
91	5853.00	90.30	359.90	3919.86	2266.24	-13.28	2266.24	1.44	-0.65	1.29
92	5884.00	90.10	359.70	3919.75	2297.24	-13.39	2297.24	0.91	-0.65	-0.65
93	5915.00	90.20	359.60	3919.67	2328.24	-13.58	2328.24	0.46	0.32	-0.32
94	5946.00	90.50	359.30	3919.48	2359.24	-13.88	2359.24	1.37	0.97	-0.97
95	5977.00	90.70	359.40	3919.15	2390.23	-14.23	2390.23	0.72	0.65	0.32
96	6008.00	90.90	359.50	3918.72	2421.23	-14.53	2421.23	0.72	0.65	0.32
97	6039.00	91.60	359.80	3918.05	2452.22	-14.72	2452.22	2.46	2.26	0.97
98	6070.00	92.00	359.60	3917.07	2483.20	-14.88	2483.20	1.44	1.29	-0.65
99	6101.00	91.10	359.80	3916.23	2514.19	-15.04	2514.19	2.97	-2.90	0.65
100	6131.00	90.80	359.70	3915.74	2544.19	-15.17	2544.19	1.05	-1.00	-0.33
101	6162.00	90.40	359.80	3915.41	2575.19	-15.31	2575.19	1.33	-1.29	0.32
102	6193.00	90.40	0.10	3915.19	2606.19	-15.33	2606.19	0.97	0.00	0.97
103	6224.00	90.80	359.90	3914.87	2637.18	-15.33	2637.18	1.44	1.29	-0.65
104	6255.00	91.20	359.70	3914.33	2668.18	-15.44	2668.18	1.44	1.29	-0.65
105	6286.00	91.40	0.00	3913.63	2699.17	-15.52	2699.17	1.16	0.65	0.97
106	6316.00	90.80	0.50	3913.05	2729.16	-15.39	2729.16	2.60	-2.00	1.67
107	6347.00	90.80	0.30	3912.62	2760.16	-15.18	2760.16	0.65	0.00	-0.65

# Well Report



Company : Dorado E&P Partners  
 Well : Preisser 25-9-6 1H  
 Location : Reno County Kansas  
 Reference: Grid North

Page: 4  
 Date : 9/11/2012  
 File : OK 12129

## Vertical Section Calculated Along Azimuth 0.00°

	KB Elevation = 1733.00ft			GR. Elevation = 1721.00ft						
	MD ft	Inc deg	Azi deg	TVD ft	North ft	East ft	V'Sect ft	D'Leg %100	Build %100	Turn %100
108	6378.00	91.20	0.40	3912.08	2791.16	-14.99	2791.16	1.33	1.29	0.32
109	6408.00	91.40	0.50	3911.40	2821.15	-14.75	2821.15	0.75	0.67	0.33
110	6439.00	90.40	0.70	3910.91	2852.14	-14.43	2852.14	3.29	-3.23	0.65
111	6470.00	90.10	1.00	3910.77	2883.14	-13.97	2883.14	1.37	-0.97	0.97
112	6501.00	89.10	1.00	3910.99	2914.13	-13.43	2914.13	3.23	-3.23	0.00
113	6532.00	89.10	1.20	3911.48	2945.12	-12.83	2945.12	0.65	0.00	0.65
114	6563.00	89.30	1.00	3911.91	2976.11	-12.24	2976.11	0.91	0.65	-0.65
115	6594.00	89.10	0.80	3912.34	3007.11	-11.75	3007.11	0.91	-0.65	-0.65
116	6625.00	89.10	0.70	3912.83	3038.10	-11.34	3038.10	0.32	0.00	-0.32
117	6656.00	89.10	1.00	3913.32	3069.09	-10.88	3069.09	0.97	0.00	0.97
118	6687.00	89.40	1.30	3913.72	3100.08	-10.26	3100.08	1.37	0.97	0.97
119	6718.00	90.20	1.00	3913.83	3131.08	-9.64	3131.08	2.76	2.58	-0.97
120	6749.00	90.60	1.00	3913.61	3162.07	-9.10	3162.07	1.29	1.29	0.00
121	6780.00	90.90	0.50	3913.21	3193.07	-8.69	3193.07	1.88	0.97	-1.61
122	6811.00	90.90	0.30	3912.72	3224.06	-8.48	3224.06	0.65	0.00	-0.65
123	6842.00	91.30	0.20	3912.13	3255.05	-8.34	3255.05	1.33	1.29	-0.32
124	6873.00	91.50	0.20	3911.37	3286.05	-8.23	3286.05	0.65	0.65	0.00
125	6904.00	91.50	0.40	3910.56	3317.03	-8.07	3317.03	0.64	0.00	0.65
126	6935.00	91.60	0.30	3909.72	3348.02	-7.88	3348.02	0.46	0.32	-0.32
127	6966.00	91.90	0.70	3908.77	3379.01	-7.61	3379.01	1.61	0.97	1.29
128	6997.00	91.20	0.90	3907.93	3409.99	-7.18	3409.99	2.35	-2.26	0.65
129	7028.00	90.90	1.30	3907.37	3440.98	-6.58	3440.98	1.61	-0.97	1.29
130	7058.00	91.20	1.40	3906.82	3470.97	-5.88	3470.97	1.05	1.00	0.33
131	7089.00	91.30	1.30	3906.14	3501.95	-5.15	3501.95	0.46	0.32	-0.32
132	7120.00	91.60	1.60	3905.35	3532.93	-4.36	3532.93	1.37	0.97	0.97
133	7151.00	92.00	1.50	3904.38	3563.90	-3.52	3563.90	1.33	1.29	-0.32
134	7182.00	91.50	1.90	3903.43	3594.88	-2.60	3594.88	2.07	-1.61	1.29
135	7213.00	90.80	1.60	3902.81	3625.86	-1.66	3625.86	2.46	-2.26	-0.97
136	7244.00	91.00	1.90	3902.33	3656.84	-0.71	3656.84	1.16	0.65	0.97
137	7275.00	91.00	2.50	3901.78	3687.81	0.48	3687.81	1.94	0.00	1.94
138	7306.00	91.10	1.90	3901.22	3718.78	1.67	3718.78	1.96	0.32	-1.94
139	7337.00	91.20	1.90	3900.59	3749.76	2.70	3749.76	0.32	0.32	0.00
140	7368.00	90.80	2.00	3900.05	3780.74	3.75	3780.74	1.33	-1.29	0.32
141	7399.00	90.90	2.10	3899.59	3811.71	4.86	3811.71	0.46	0.32	0.32
142	7430.00	90.10	2.10	3899.32	3842.69	6.00	3842.69	2.58	-2.58	0.00
143	7461.00	90.40	1.90	3899.19	3873.67	7.08	3873.67	1.16	0.97	-0.65

# Well Report



Company : Dorado E&P Partners  
 Well : Preisser 25-9-6 1H  
 Location : Reno County Kansas  
 Reference: Grid North

Page: 5  
 Date : 9/11/2012  
 File : OK 12129

### Vertical Section Calculated Along Azimuth 0.00°

	MD	KB Elevation = 1733.00ft	Azi	TVD	GR. Elevation = 1721.00ft	East	V'Sect	D'Leg	Build	Turn
	ft	Inc deg	deg	ft	North ft	ft	ft	%100	%100	%100
144	7492.00	90.60	1.40	3898.92	3904.66	7.97	3904.66	1.74	0.65	-1.61
145	7523.00	90.60	1.40	3898.59	3935.65	8.73	3935.65	0.00	0.00	0.00
146	7554.00	91.00	1.20	3898.16	3966.63	9.43	3966.63	1.44	1.29	-0.65
147	7585.00	90.90	1.00	3897.65	3997.62	10.03	3997.62	0.72	-0.32	-0.65
148	7616.00	90.70	1.30	3897.21	4028.62	10.65	4028.62	1.16	-0.65	0.97
149	7647.00	90.20	1.90	3896.97	4059.60	11.51	4059.60	2.52	-1.61	1.94
150	7678.00	90.60	1.80	3896.75	4090.58	12.51	4090.58	1.33	1.29	-0.32
151	7709.00	89.90	1.70	3896.62	4121.57	13.46	4121.57	2.28	-2.26	-0.32
152	7740.00	89.70	1.40	3896.73	4152.56	14.30	4152.56	1.16	-0.65	-0.97
153	7770.00	88.70	1.50	3897.14	4182.55	15.06	4182.55	3.35	-3.33	0.33
154	7801.00	88.50	1.40	3897.90	4213.53	15.84	4213.53	0.72	-0.65	-0.32
155	7832.00	88.80	1.30	3898.63	4244.51	16.57	4244.51	1.02	0.97	-0.32
156	7863.00	89.10	0.80	3899.20	4275.50	17.14	4275.50	1.88	0.97	-1.61
157	7894.00	88.90	0.40	3899.74	4306.49	17.47	4306.49	1.44	-0.65	-1.29
158	7925.00	88.60	0.10	3900.42	4337.48	17.60	4337.48	1.37	-0.97	-0.97
159	7956.00	88.70	359.70	3901.15	4368.48	17.55	4368.48	1.33	0.32	-1.29
160	7987.00	88.90	0.10	3901.80	4399.47	17.49	4399.47	1.44	0.65	1.29
161	8018.00	89.10	359.90	3902.34	4430.46	17.49	4430.46	0.91	0.65	-0.65
162	8049.00	89.70	0.30	3902.66	4461.46	17.55	4461.46	2.33	1.94	1.29
163	8080.00	89.80	359.80	3902.80	4492.46	17.57	4492.46	1.64	0.32	-1.61
164	8111.00	90.00	0.10	3902.85	4523.46	17.55	4523.46	1.16	0.65	0.97
165	8142.00	90.20	359.40	3902.80	4554.46	17.41	4554.46	2.35	0.65	-2.26
166	8173.00	90.20	359.20	3902.69	4585.46	17.03	4585.46	0.65	0.00	-0.65
167	8204.00	90.40	358.90	3902.53	4616.45	16.52	4616.45	1.16	0.65	-0.97
168	8235.00	90.50	359.00	3902.28	4647.45	15.95	4647.45	0.46	0.32	0.32
169	8266.00	90.70	358.70	3901.96	4678.44	15.33	4678.44	1.16	0.65	-0.97
170	8297.00	90.80	358.80	3901.55	4709.43	14.65	4709.43	0.46	0.32	0.32
EXT	8350.00	90.80	358.80	3900.81	4762.41	13.54	4762.41	0.00	0.00	0.00

**Bottom Hole Closure 4762.43ft Along Azimuth 0.16°**