



KANSAS CORPORATION COMMISSION 1048781
OIL & GAS CONSERVATION DIVISION

Form ACO-1
June 2009

Form Must Be Typed
Form must be Signed
All blanks must be Filled

WELL COMPLETION FORM
WELL HISTORY - DESCRIPTION OF WELL & LEASE

OPERATOR: License # 9408
Name: Trans Pacific Oil Corporation
Address 1: 100 S MAIN STE 200
Address 2: _____
City: WICHITA State: KS Zip: 67202 + 3735
Contact Person: Glenna Lowe
Phone: (316) 262-3596
CONTRACTOR: License # 33493
Name: American Eagle Drilling LLC
Wellsite Geologist: Ted Jochems
Purchaser: n/a

Designate Type of Completion:

- New Well Re-Entry Workover
- Oil WSW SWD SLOW
- Gas D&A ENHR SIGW
- OG GSW Temp. Abd.
- CM (Coal Bed Methane)
- Cathodic Other (Core, Expl., etc.): _____

If Workover/Re-entry: Old Well Info as follows:

Operator: _____
Well Name: _____
Original Comp. Date: _____ Original Total Depth: _____

Deepening Re-perf. Conv. to ENHR Conv. to SWD

Conv. to GSW

Plug Back: _____ Plug Back Total Depth _____

Commingled Permit #: _____

Dual Completion Permit #: _____

SWD Permit #: _____

ENHR Permit #: _____

GSW Permit #: _____

12/11/2010	12/18/2010	12/18/2010
Spud Date or Recompletion Date	Date Reached TD	Completion Date or Recompletion Date

API No. 15 - 15-167-23679-00-00

Spot Description: _____
SW SE NW NW Sec. 1 Twp. 11 S. R. 14 East West

1199 Feet from North / South Line of Section

779 Feet from East / West Line of Section

Footages Calculated from Nearest Outside Section Corner:
 NE NW SE SW

County: Russell

Lease Name: CEDERBERG 'A' Well #: 1-1

Field Name: _____

Producing Formation: n/a

Elevation: Ground: 1782 Kelly Bushing: 1787

Total Depth: 3367 Plug Back Total Depth: _____

Amount of Surface Pipe Set and Cemented at: 261 Feet

Multiple Stage Cementing Collar Used? Yes No

If yes, show depth set: _____ Feet

If Alternate II completion, cement circulated from: _____

feet depth to: _____ w/ _____ sx cmt.

Drilling Fluid Management Plan

(Data must be collected from the Reserve Pit)

Chloride content: 7000 ppm Fluid volume: 480 bbls

Dewatering method used: Evaporated

Location of fluid disposal if hauled offsite: _____

Operator Name: _____

Lease Name: _____ License #: _____

Quarter _____ Sec. _____ Twp. _____ S. R. _____ East West

County: _____ Permit #: _____

AFFIDAVIT

I am the affiant and I hereby certify that all requirements of the statutes, rules and regulations promulgated to regulate the oil and gas industry have been fully complied with and the statements herein are complete and correct to the best of my knowledge.

Submitted Electronically

KCC Office Use ONLY

- Letter of Confidentiality Received
Date: 12/30/2010
- Confidential Release Date: 12/29/2012
- Wireline Log Received
- Geologist Report Received
- UIC Distribution
- ALT I II III Approved by: NAOMI JAMES Date: 01/06/2011

Operator Name: Trans Pacific Oil Corporation Lease Name: CEDERBERG 'A' Well #: 1-1

Sec. 1 Twp. 11 S. R. 14 East West County: Russell

INSTRUCTIONS: Show important tops and base of formations penetrated. Detail all cores. Report all final copies of drill stems tests giving interval tested, time tool open and closed, flowing and shut-in pressures, whether shut-in pressure reached static level, hydrostatic pressures, bottom hole temperature, fluid recovery, and flow rates if gas to surface test, along with final chart(s). Attach extra sheet if more space is needed. Attach complete copy of all Electric Wire-line Logs surveyed. Attach final geological well site report.

Drill Stem Tests Taken <i>(Attach Additional Sheets)</i>	<input checked="" type="checkbox"/> Yes <input type="checkbox"/> No	<input checked="" type="checkbox"/> Log Formation (Top), Depth and Datum	<input type="checkbox"/> Sample
Samples Sent to Geological Survey	<input checked="" type="checkbox"/> Yes <input type="checkbox"/> No	Name	Top Datum
Cores Taken	<input type="checkbox"/> Yes <input checked="" type="checkbox"/> No	See Attachment	
Electric Log Run	<input checked="" type="checkbox"/> Yes <input type="checkbox"/> No		
Electric Log Submitted Electronically <i>(If no, Submit Copy)</i>	<input checked="" type="checkbox"/> Yes <input type="checkbox"/> No		
List All E. Logs Run:			
DIL			
POR			

CASING RECORD <input checked="" type="checkbox"/> New <input type="checkbox"/> Used							
Report all strings set-conductor, surface, intermediate, production, etc.							
Purpose of String	Size Hole Drilled	Size Casing Set (In O.D.)	Weight Lbs. / Ft.	Setting Depth	Type of Cement	# Sacks Used	Type and Percent Additives
Surface	12.25	8.625	23	261	Common	165	3% cc, 2% gel

ADDITIONAL CEMENTING / SQUEEZE RECORD				
Purpose:	Depth Top Bottom	Type of Cement	# Sacks Used	Type and Percent Additives
___ Perforate				
___ Protect Casing	-			
___ Plug Back TD				
___ Plug Off Zone	-			

Shots Per Foot	PERFORATION RECORD - Bridge Plugs Set/Type Specify Footage of Each Interval Perforated	Acid, Fracture, Shot, Cement Squeeze Record <i>(Amount and Kind of Material Used)</i>	Depth

TUBING RECORD:	Size:	Set At:	Packer At:	Liner Run: <input type="checkbox"/> Yes <input type="checkbox"/> No
----------------	-------	---------	------------	---

Date of First, Resumed Production, SWD or ENHR.	Producing Method: <input type="checkbox"/> Flowing <input type="checkbox"/> Pumping <input type="checkbox"/> Gas Lift <input type="checkbox"/> Other <i>(Explain)</i> _____
Estimated Production Per 24 Hours	Oil Bbls. Gas Mcf Water Bbls. Gas-Oil Ratio Gravity

DISPOSITION OF GAS: <input type="checkbox"/> Vented <input type="checkbox"/> Sold <input type="checkbox"/> Used on Lease <i>(If vented, Submit ACO-18.)</i>	METHOD OF COMPLETION: <input type="checkbox"/> Open Hole <input type="checkbox"/> Perf. <input type="checkbox"/> Dually Comp. <input type="checkbox"/> Commingled <i>(Submit ACO-5)</i> <input type="checkbox"/> Other <i>(Specify)</i> _____	PRODUCTION INTERVAL: _____ _____
---	---	--



SUPERIOR
Hays,
Kansas

**DUAL
INDUCTION
LOG**

Company TRANS PACIFIC OIL CORPORATION
Well #1-1 CEDERBERG "A"
Field WILDCAT
County RUSSELL State KANSAS

Company TRANS PACIFIC OIL CORP.
Well #1-1 CEDERBERG "A"
Field WILDCAT
County RUSSELL
State KANSAS

Location: API #: 15-167-23679-0000
1199' FNL & 779' FWL
SW - SE - NW - NW
SEC 1 TWP 11S RGE 14W
Permanent Datum GROUND LEVEL Elevation 1782
Log Measured From KELLY BUSHING 5' A.G.L.
Drilling Measured From KELLY BUSHING
Other Services
CDL/CNL
Elevation
K.B. 1787
D.F. 1785
G.L. 1782

Well	ONE	12/18/10	
Depth Driller	3367		
Depth Logger	3371		
Bottom Logged Interval	3369		
Depth Log Interval	00		
Logging Driller	8 5/8" @ 261		
Logging Logger			
Log Size	7 7/8		
Core Fluid in Hole	CHEMICAL MUD	CHLORIDES 4000 PPM	
Density / Viscosity	9.3/50		
1 / Fluid Loss	10.0/8.8		
Source of Sample	FLOWLINE		
n @ Meas. Temp	.85 @ 80F		
mf @ Meas. Temp	.63 @ 80F		
nc @ Meas. Temp	1.02 @ 80F		
Source of Rmt / Rmc	MEASURED		
n @ BHT	.45 @ 112F		
Time Circulation Stopped	2 HOURS		
Time Logger on Bottom			
Maximum Recorded Temperature	112F		
Equipment Number	880		
Recorded By	HAYS, KS. JASON CAPPELLUCCI		
Checked By	TED JOCHEMS		

<<< Fold Here >>>

All interpretations are opinions based on inferences from electrical or other measurements and we cannot and do not guarantee the accuracy or correctness of an interpretation, and we shall not, except in the case of gross or willful negligence on our part, be liable or responsible for any loss, costs, damages, or expenses incurred or sustained by anyone resulting from any interpretation made by any of our officers, agents or employees. These interpretations are also subject to our general terms and conditions set out in our current Price Schedule.

Comments

THANK YOU FOR USING SUPERIOR WELL SERVICE (785) 628-6395
DIRECTIONS
RUSSELL KS. - N. TO 281 & 18 JCT. - 1/2 E. TO RD 186 - 1 N. - 3/4 E. - S. INTO



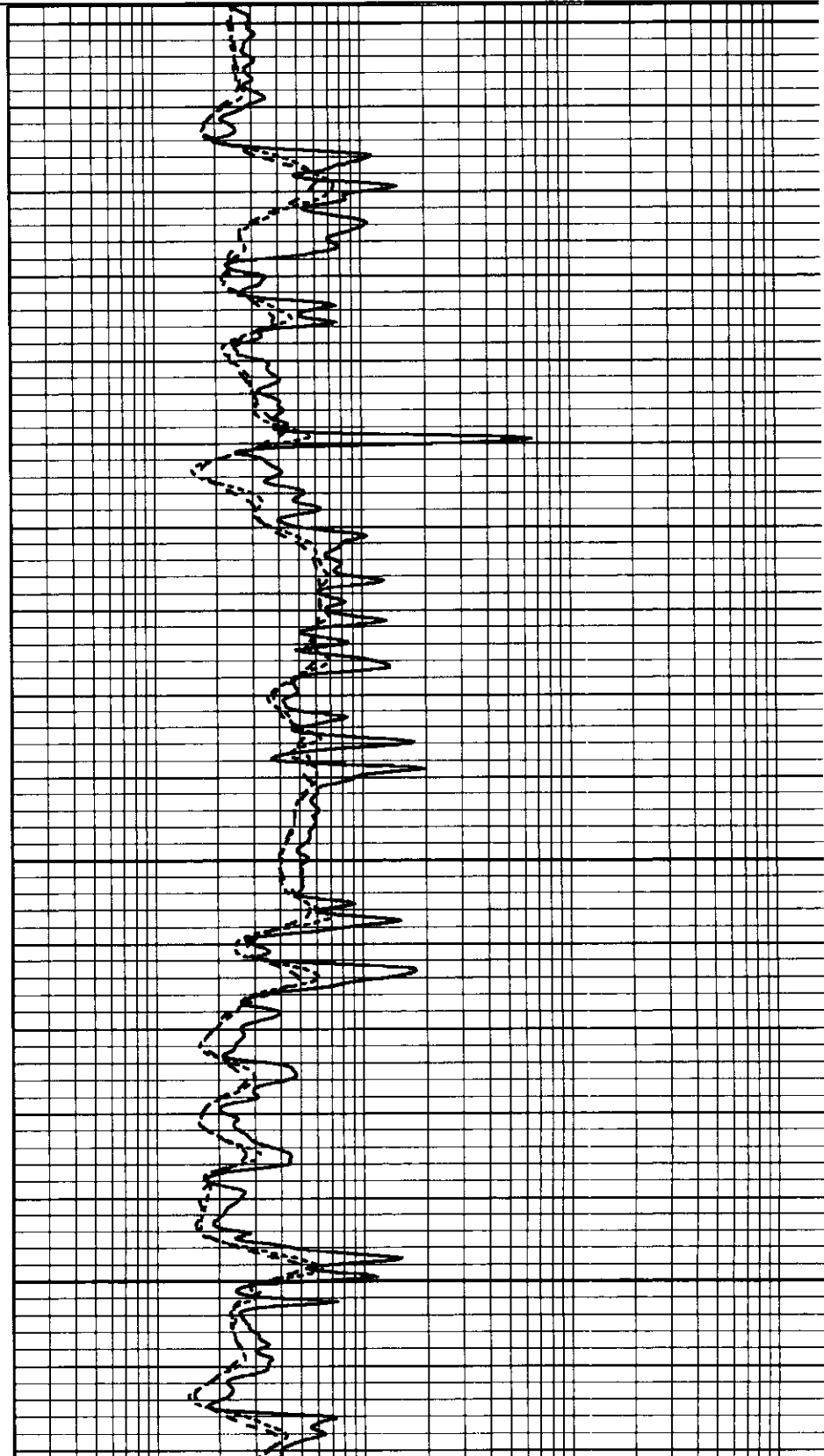
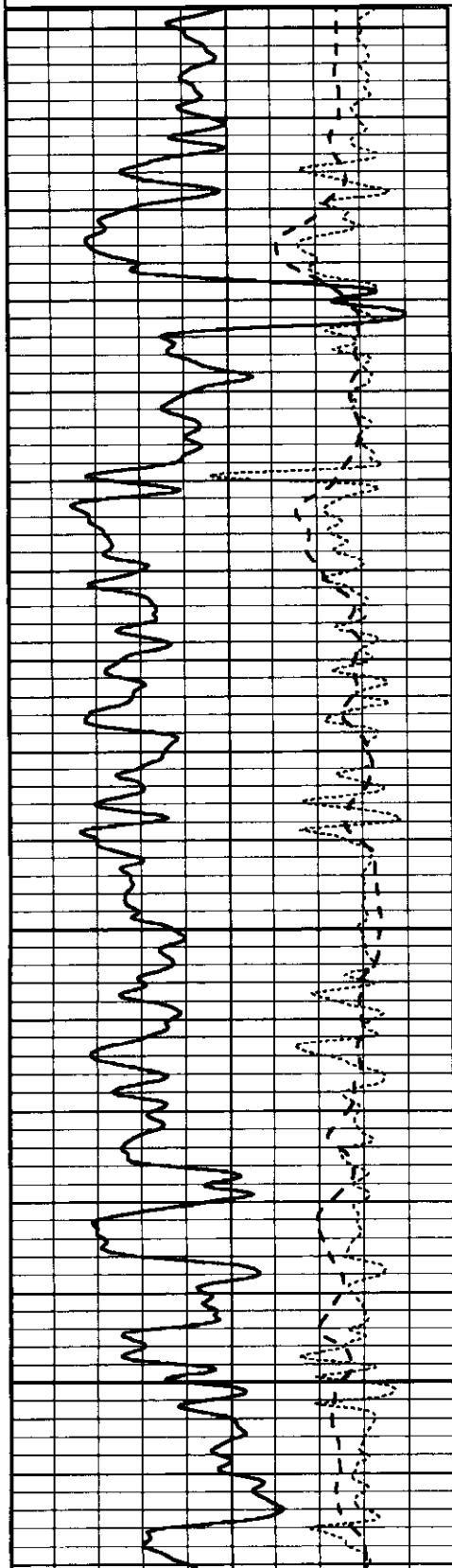
SUPERIOR
Hays,

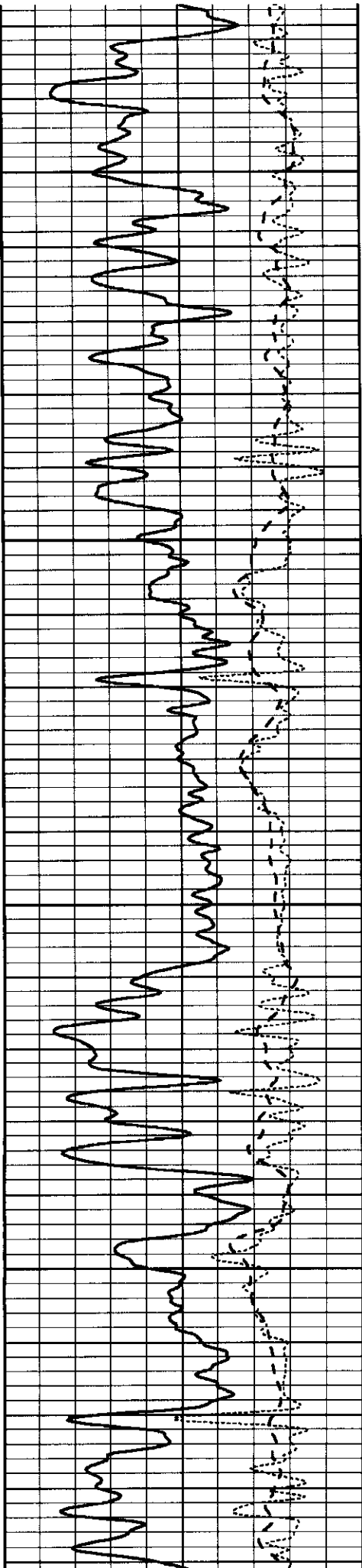
MAIN SECTION

Database File: 006434ddn.db
 Dataset Pathname: pass3.1
 Presentation Format: _dil
 Dataset Creation: Sat Dec 18 08:16:57 2010 by Calc Open-Cased 090629
 Charted by: Depth in Feet scaled 1:240

0	GAMMA RAY (GAPI)	150
-100	SP (mV)	100
-250	Rxo/Rt	50

0.2	SHALLOW GUARD (Ohm-m)	200
0.2	MEDIUM INDUCTION (Ohm-m)	200
0.2	DEEP INDUCTION (Ohm-m)	200



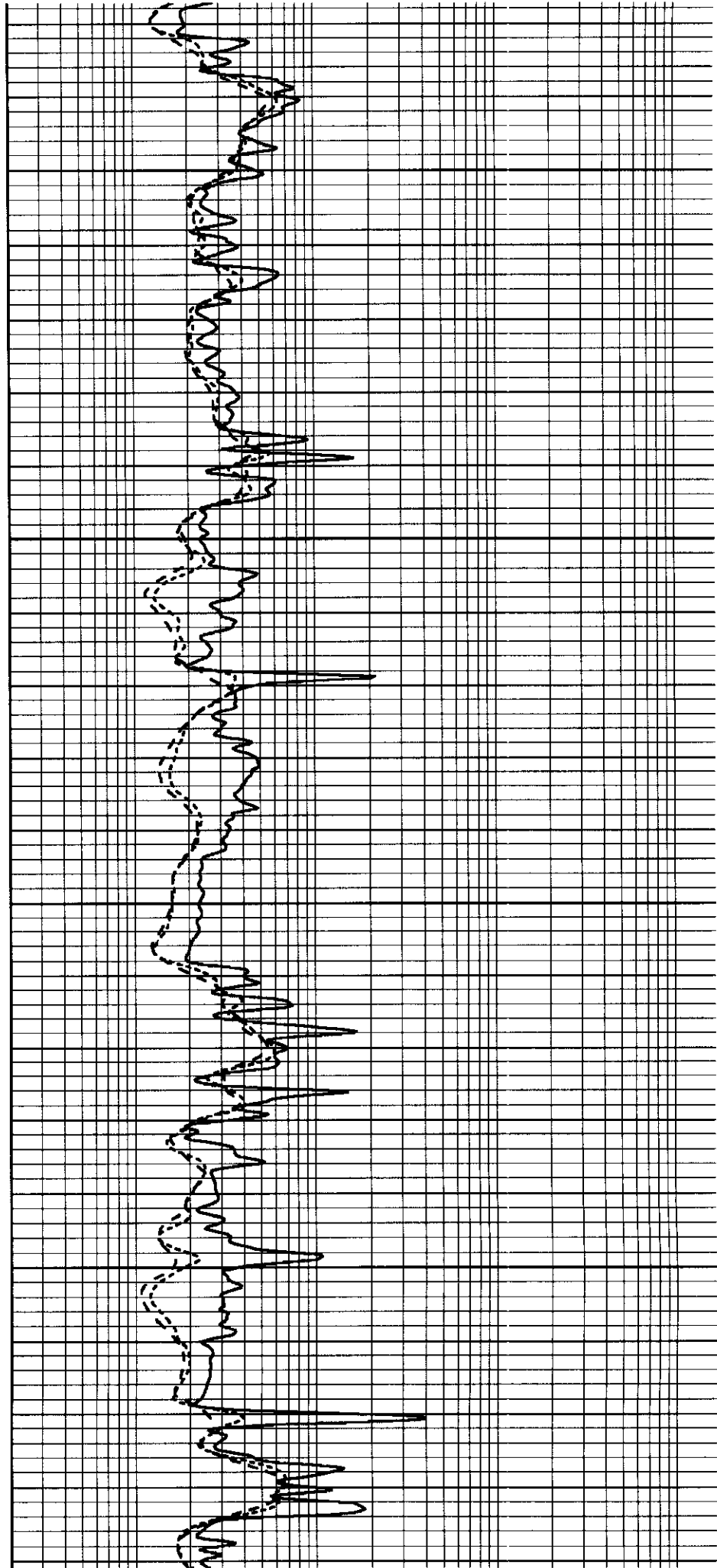


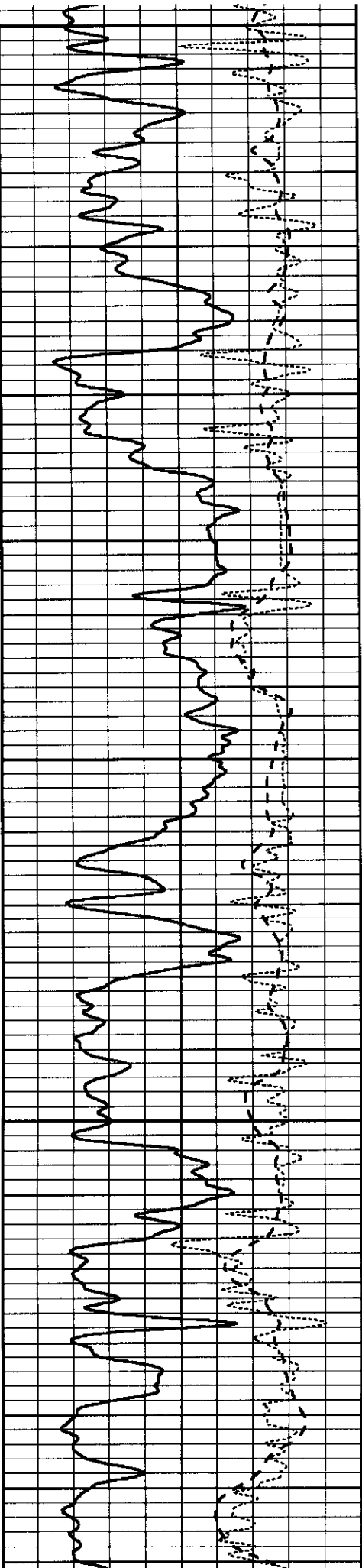
2400

2450

2500

2550





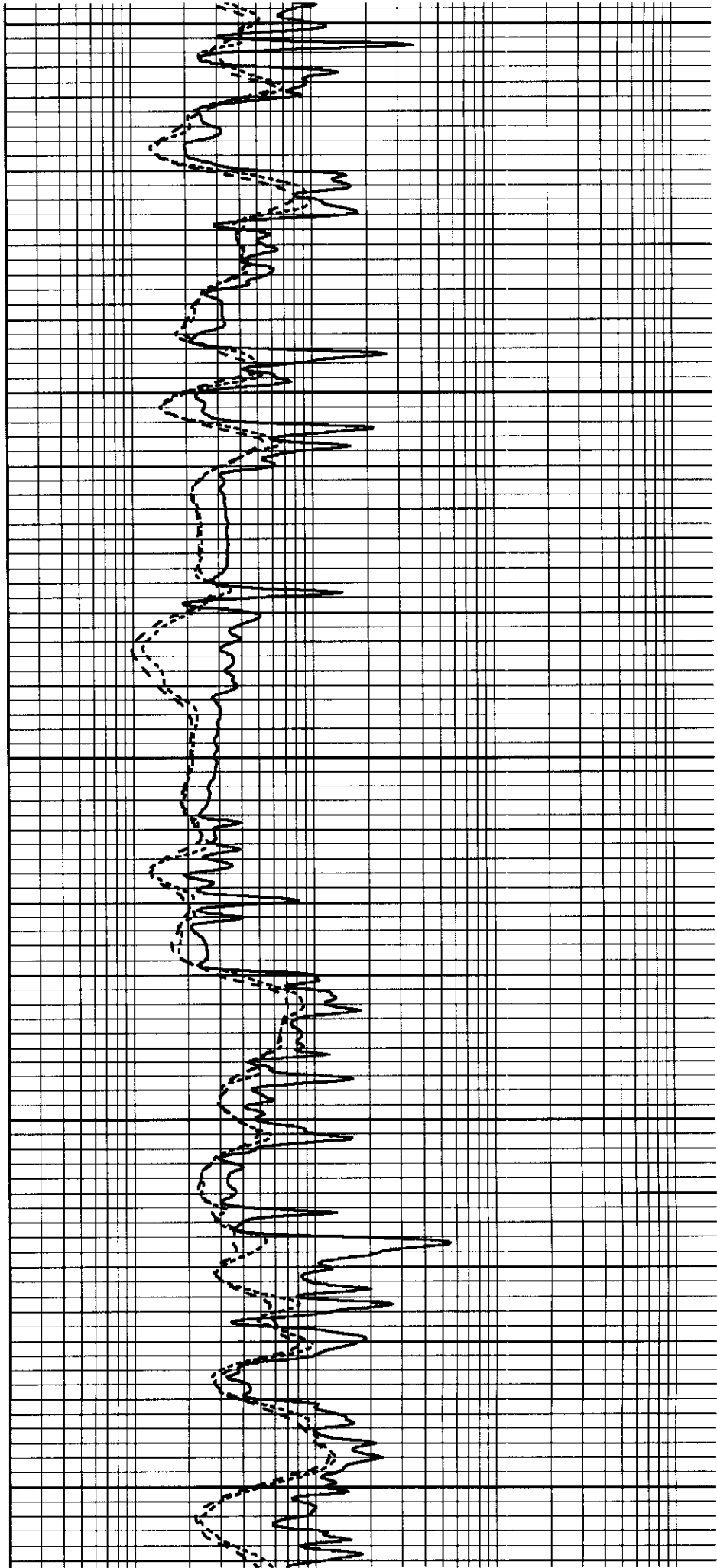
2600

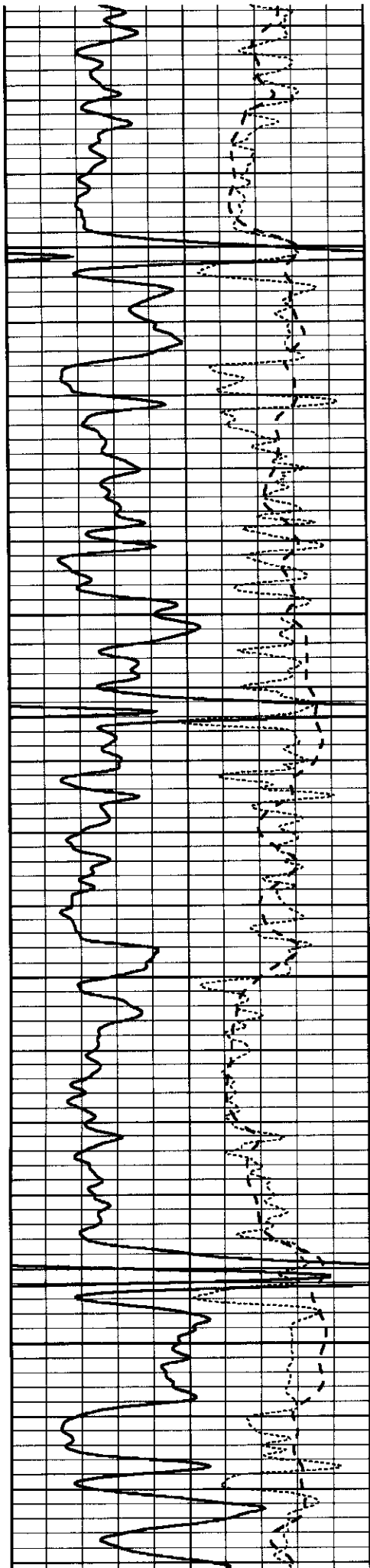
2650

2700

2750

2800



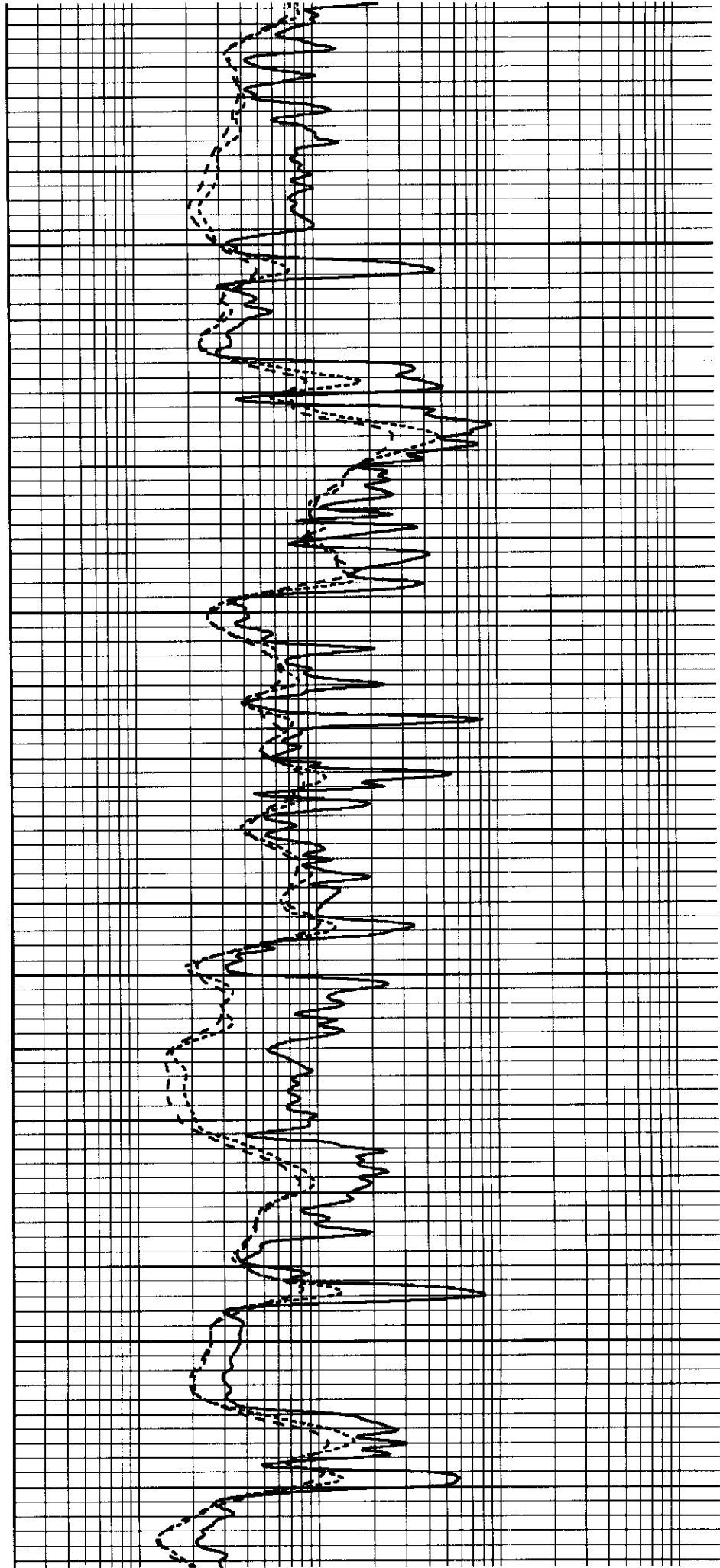


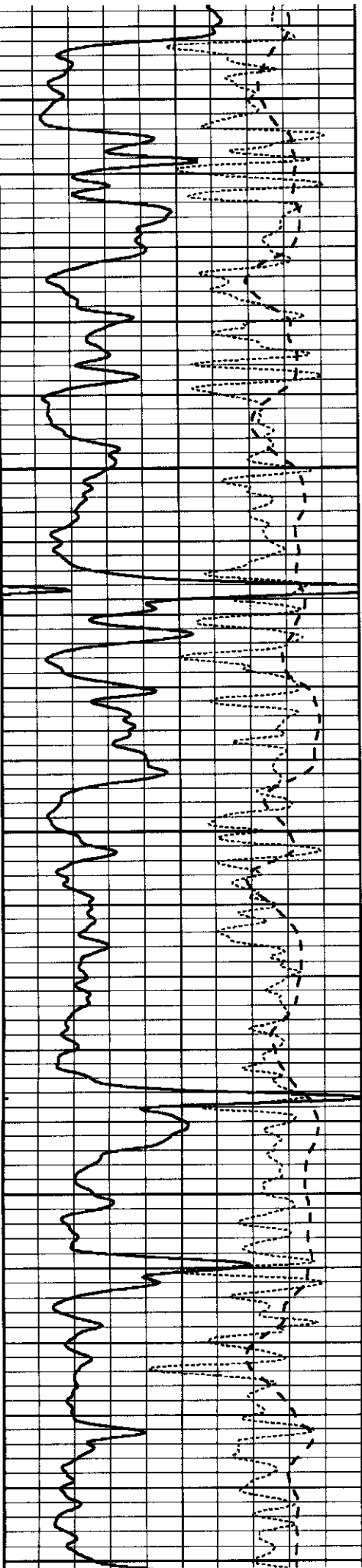
2850

2900

2950

3000





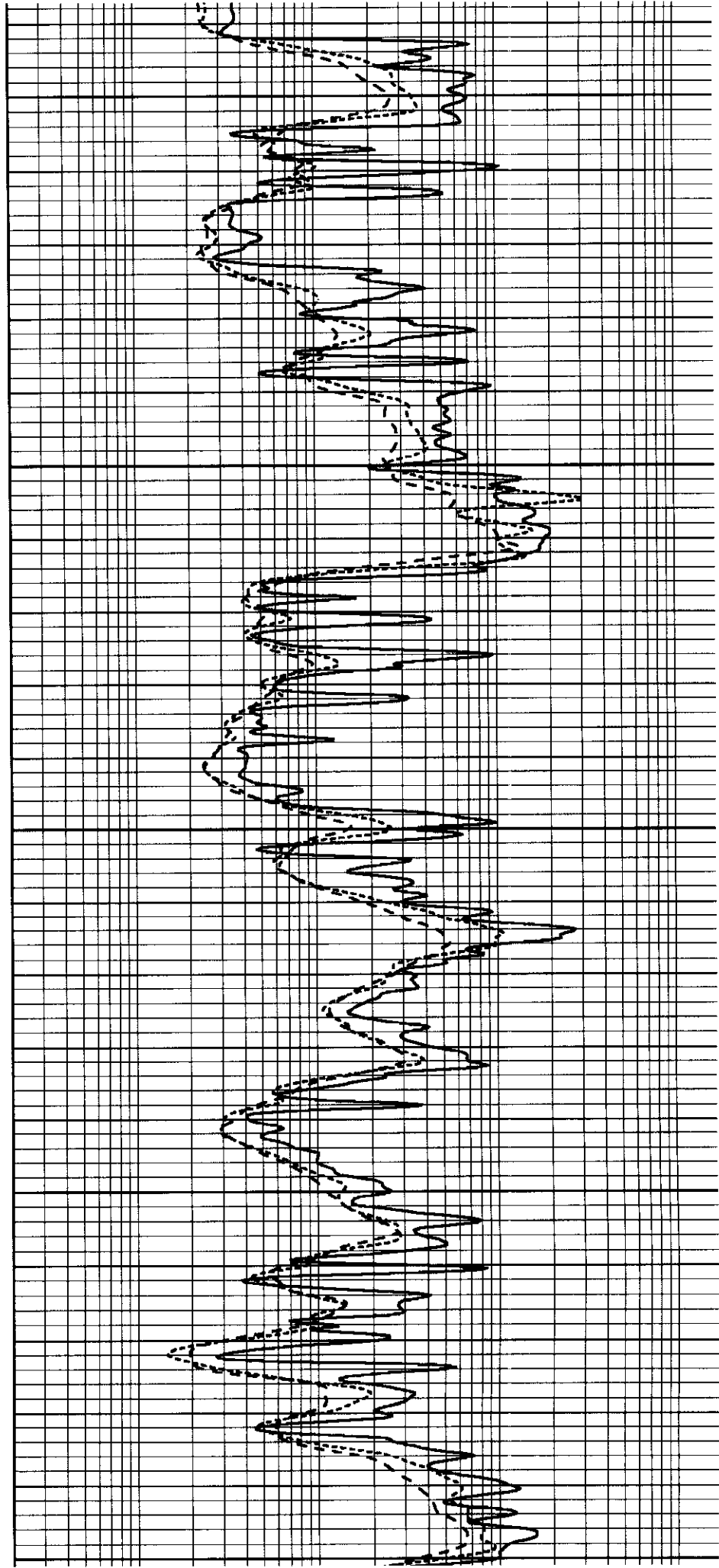
3050

3100

3150

3200

3250



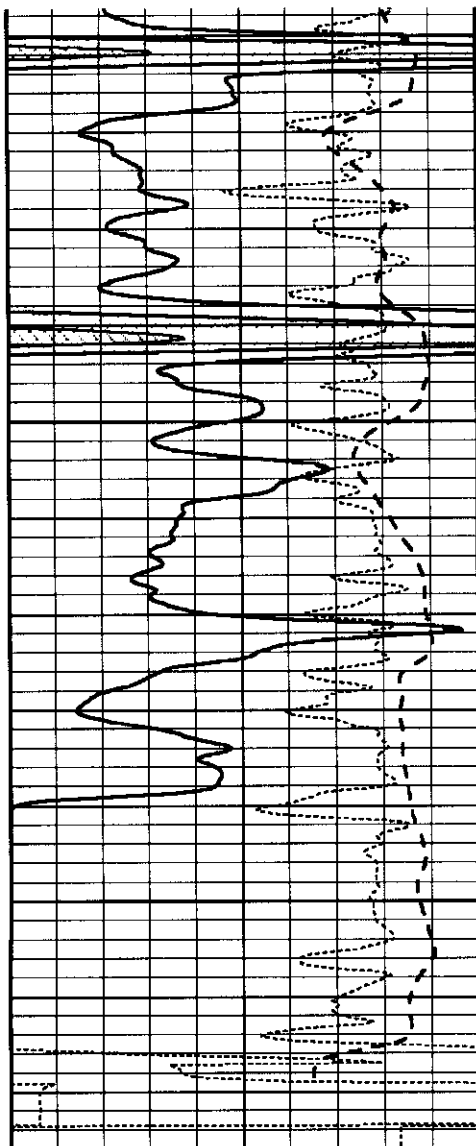
3050

3100

3150

3200

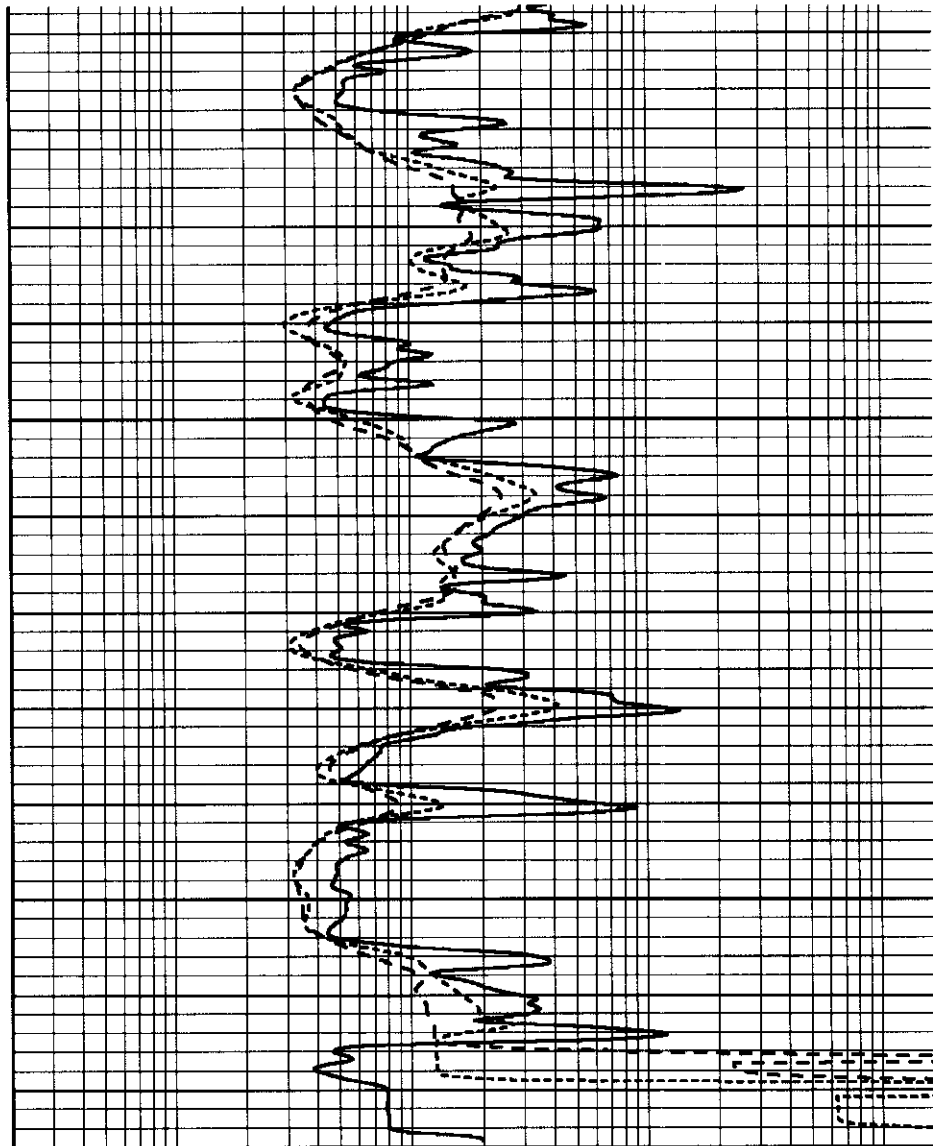
3250



3300

3350

0	GAMMA RAY (GAPI)	150
-100	SP (mV)	100
-250	Rxo/Rt	50



0.2	SHALLOW GUARD (Ohm-m)	200
0.2	MEDIUM INDUCTION (Ohm-m)	200
0.2	DEEP INDUCTION (Ohm-m)	200



SUPERIOR
Hays,
Kansas

COMPENSATED
NEUTRON / DENSITY
LOG

Company **TRANS PACIFIC OIL CORPORATION**
Well **#1-1 CEDERBERG "A"**
Field **WILDCAT**
County **RUSSELL** State **KANSAS**

Company **TRANS PACIFIC OIL CORP.**
Well **#1-1 CEDERBERG "A"**
Field **WILDCAT**
County **RUSSELL**
State **KANSAS**

Location: **API # : 15-167-23679-0000**
1199' FNL & 779' FWL
SW - SE - NW - NW
SEC 1 TWP 11S RGE 14W
Permanent Datum **GROUND LEVEL** Elevation **1782**
Log Measured From **KELLY BUSHING 5' A.G.L.**
Drilling Measured From **KELLY BUSHING**
Other Services **DIL**
Elevation **K.B. 1787**
D.F. 1785
G.L. 1782

Site	12/18/10		
Run Number	ONE		
Depth Driller	3367		
Depth Logger	3371		
Bottom Logged Interval	3347		
Top Log Interval	2200		
Logging Driller	8 5/8" @ 261		
Logging Logger			
Bit Size	7 7/8		
Drilling Fluid In Hole	CHEMICAL MUD	CHLORIDES 4000 PPM	
Weight / Viscosity	9.3/50		
Loss / Fluid Loss	10.0/8.8		
Volume of Sample	FLOWLINE		
Temperature @ Meas. Temp	.85 @ 60F		
Temperature @ Meas. Temp	.63 @ 60F		
Temperature @ Meas. Temp	1.02 @ 60F		
Temperature of Rmt / Rmc	MEASURED		
Temperature @ BHT	.45 @ 112F		
Time Circulation Stopped	2 HOURS		
Time Logger on Bottom			
Maximum Recorded Temperature	112F		
Equipment Number	680		
Recorded By	HAYS, KS.		
Checked By	JASON CAPPELLUCCI		
Printed By	TED JOCHEMS		

<<< Fold Here >>>

All interpretations are opinions based on inferences from electrical or other measurements and we cannot and do not guarantee the accuracy or correctness of an interpretation, and we shall not, except in the case of gross or willful negligence on our part, be liable or responsible for any loss, costs, damages, or expenses incurred or sustained by anyone resulting from any interpretation made by any of our officers, agents or employees. These interpretations are also subject to our general terms and conditions set out in our current Price Schedule.

Comments

THANK YOU FOR USING SUPERIOR WELL SERVICE (785) 628-6395
DIRECTIONS
RUSSELL KS. - N. TO 281 & 18 JCT. - 1/2 E. TO RD 186 - 1 N. - 3/4 E. - S. INTO

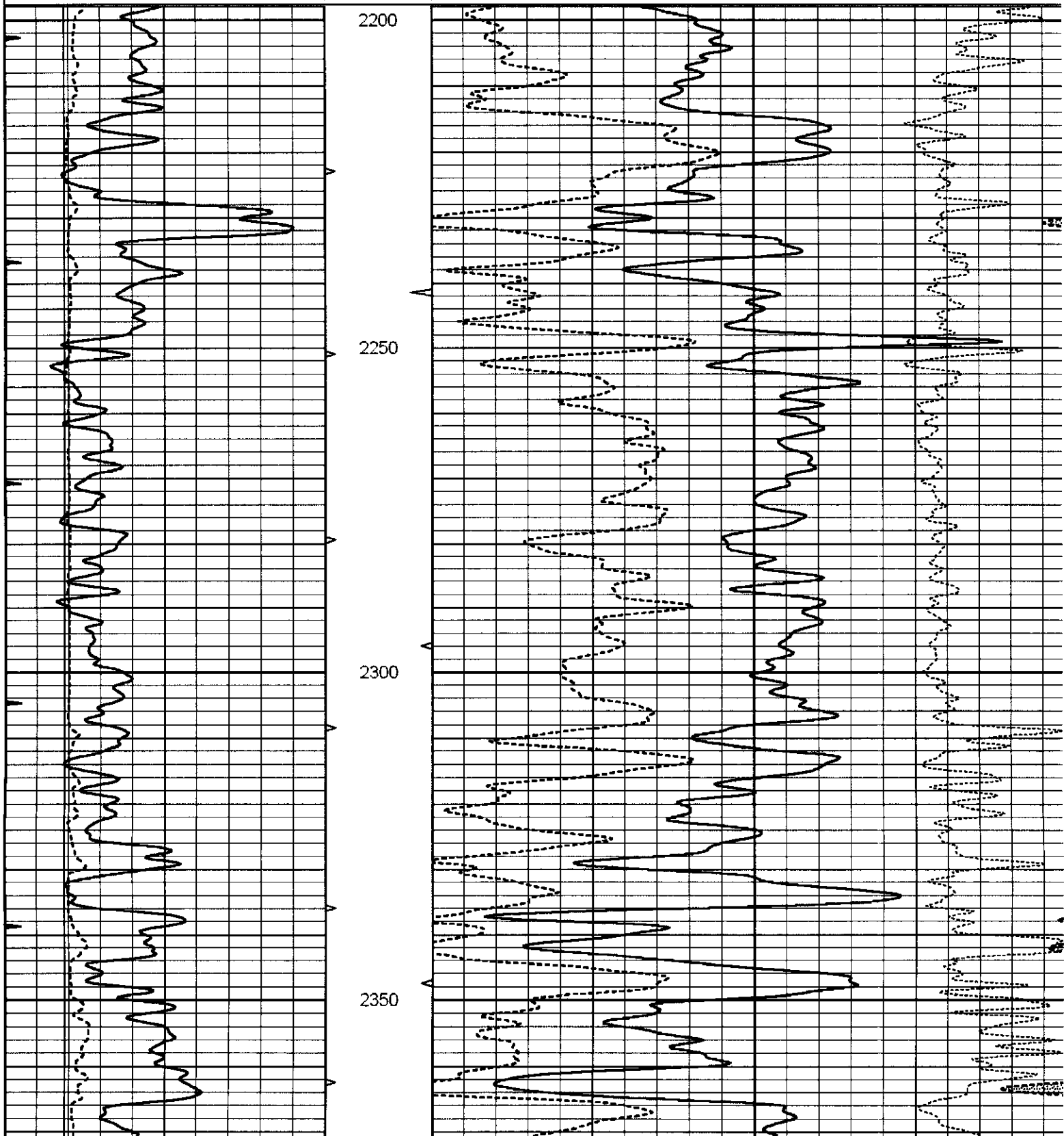


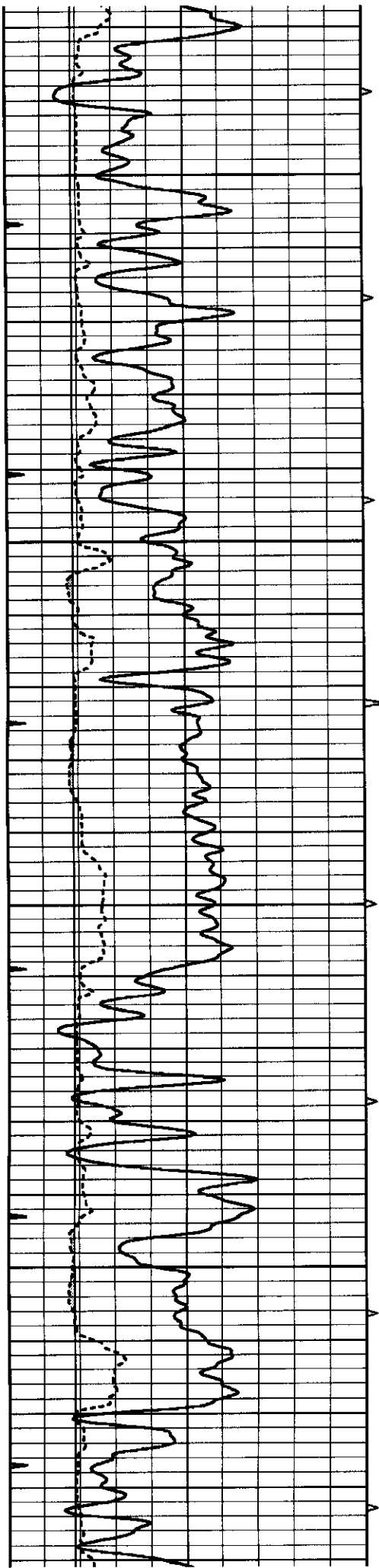
SUPERIOR
Hays,

MAIN SECTION

Database File: 006434ddn.db
 Dataset Pathname: pass3.1
 Presentation Format: _den_neu
 Dataset Creation: Sat Dec 18 08:16:57 2010 by Calc Open-Cased 090629
 Charted by: Depth in Feet scaled 1:240

0	GAMMA RAY (GAPI)	150	AVTX	30	COMPENSATED DENSITY (pu)	-1'
6	CALIPER (in)	16	10 (ft3)	0 30	COMPENSATED NEUTRON (pu)	-1'
0	MINMK	20	BVTX		-0.25 CORRECTION (g/cc)	0.2
			0 (ft3)	10		



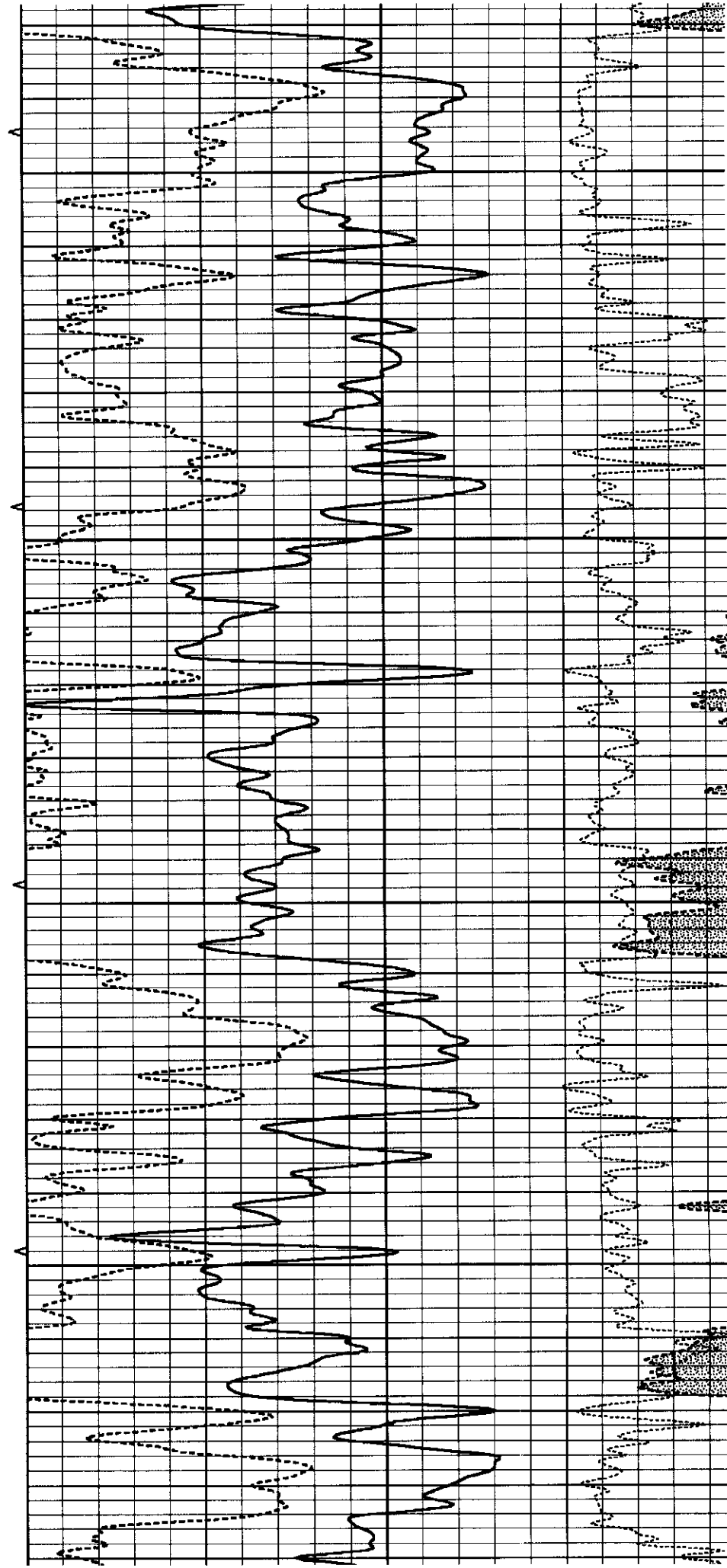


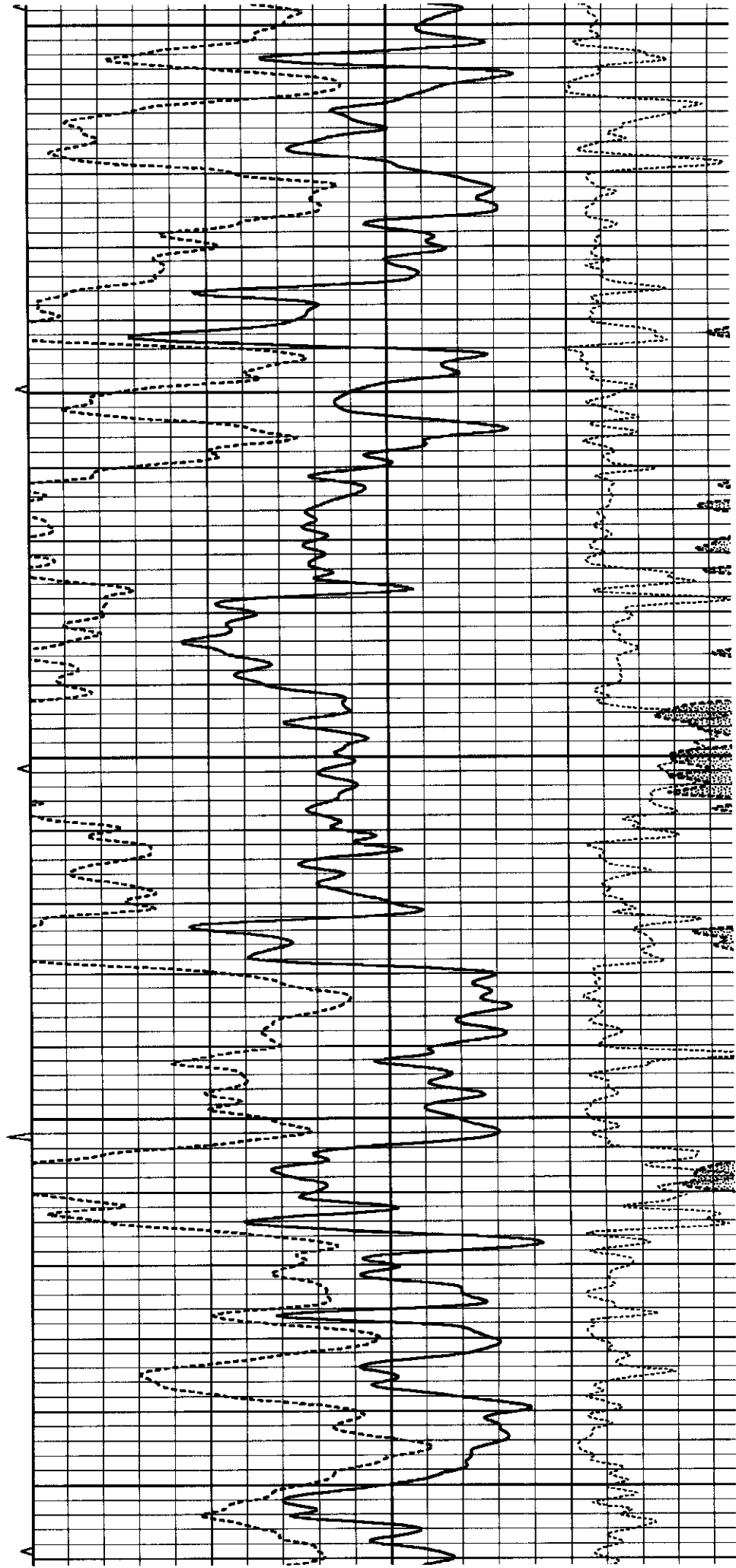
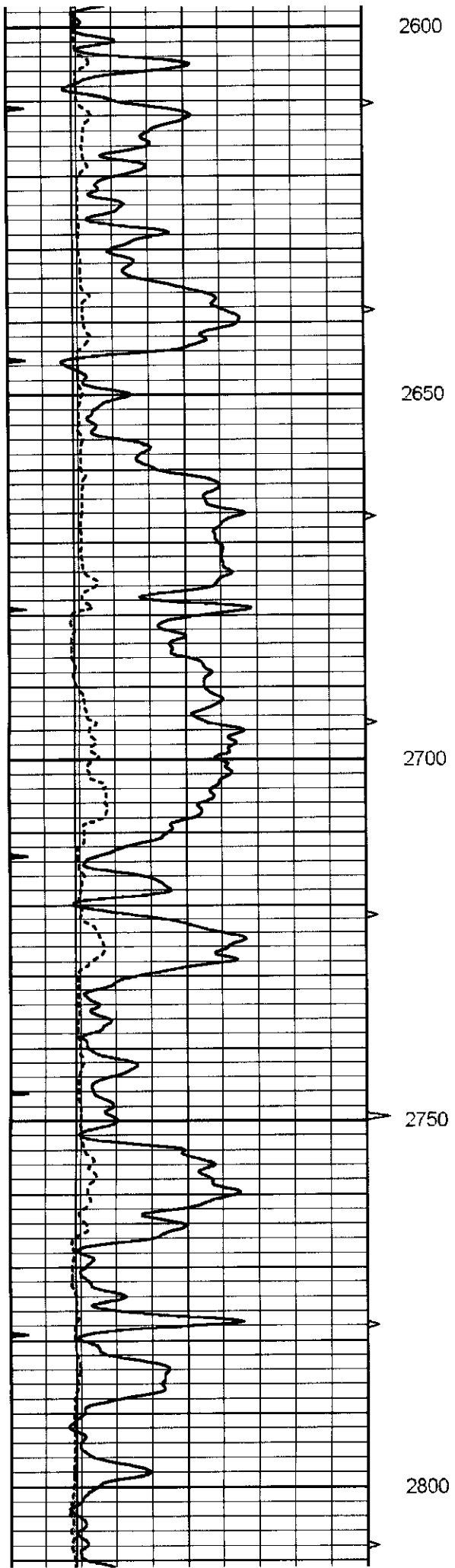
2400

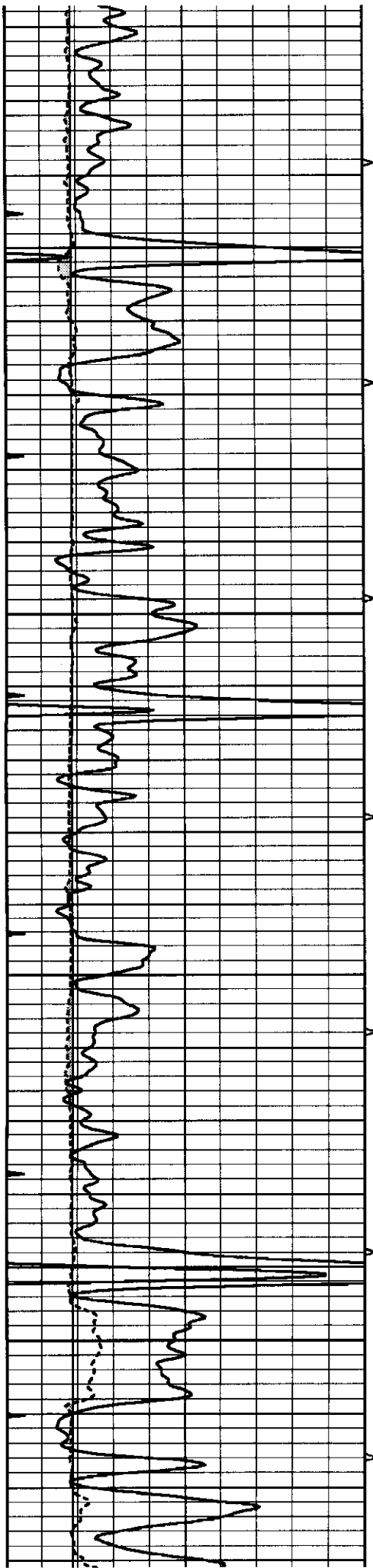
2450

2500

2550





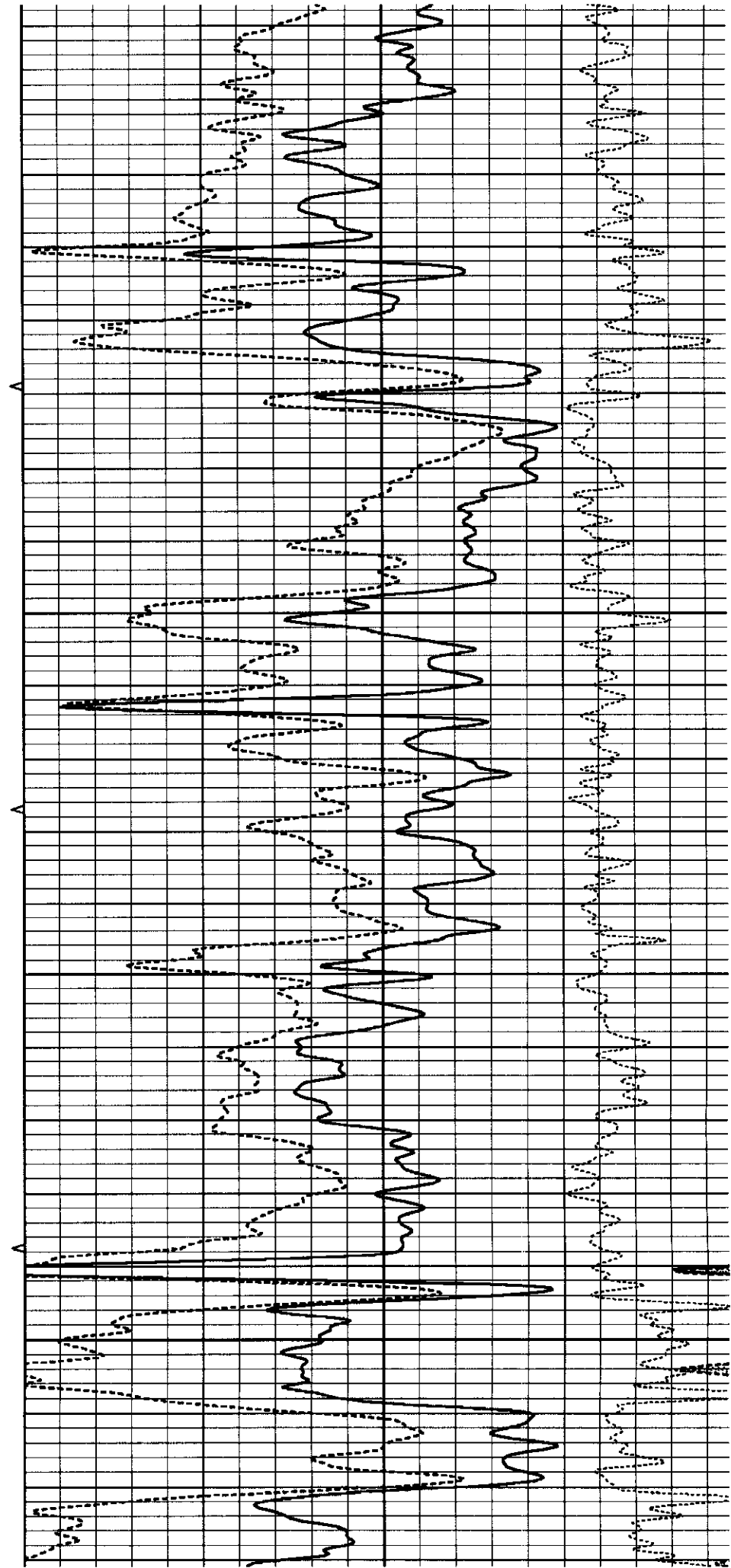


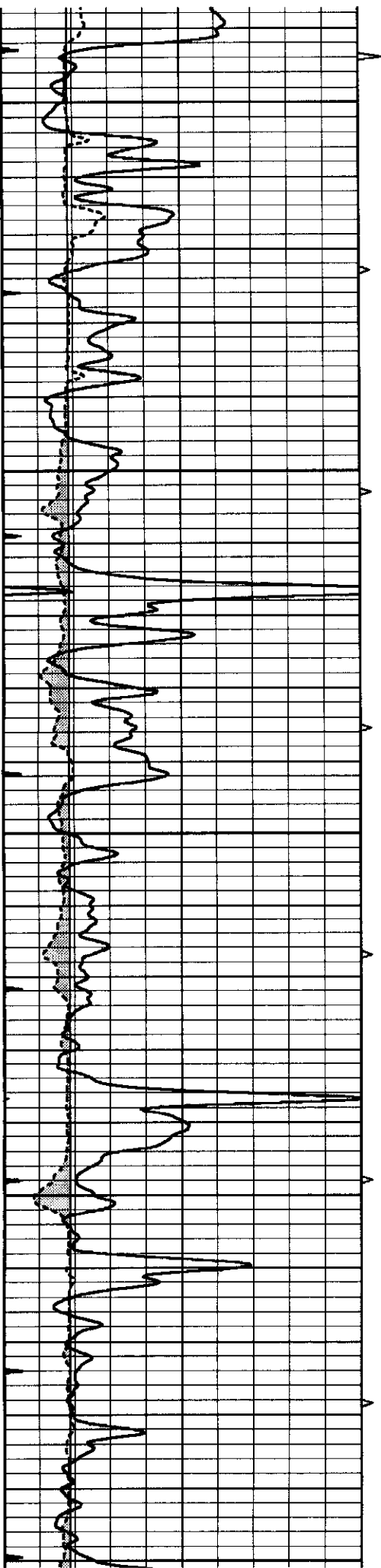
2850

2900

2950

3000





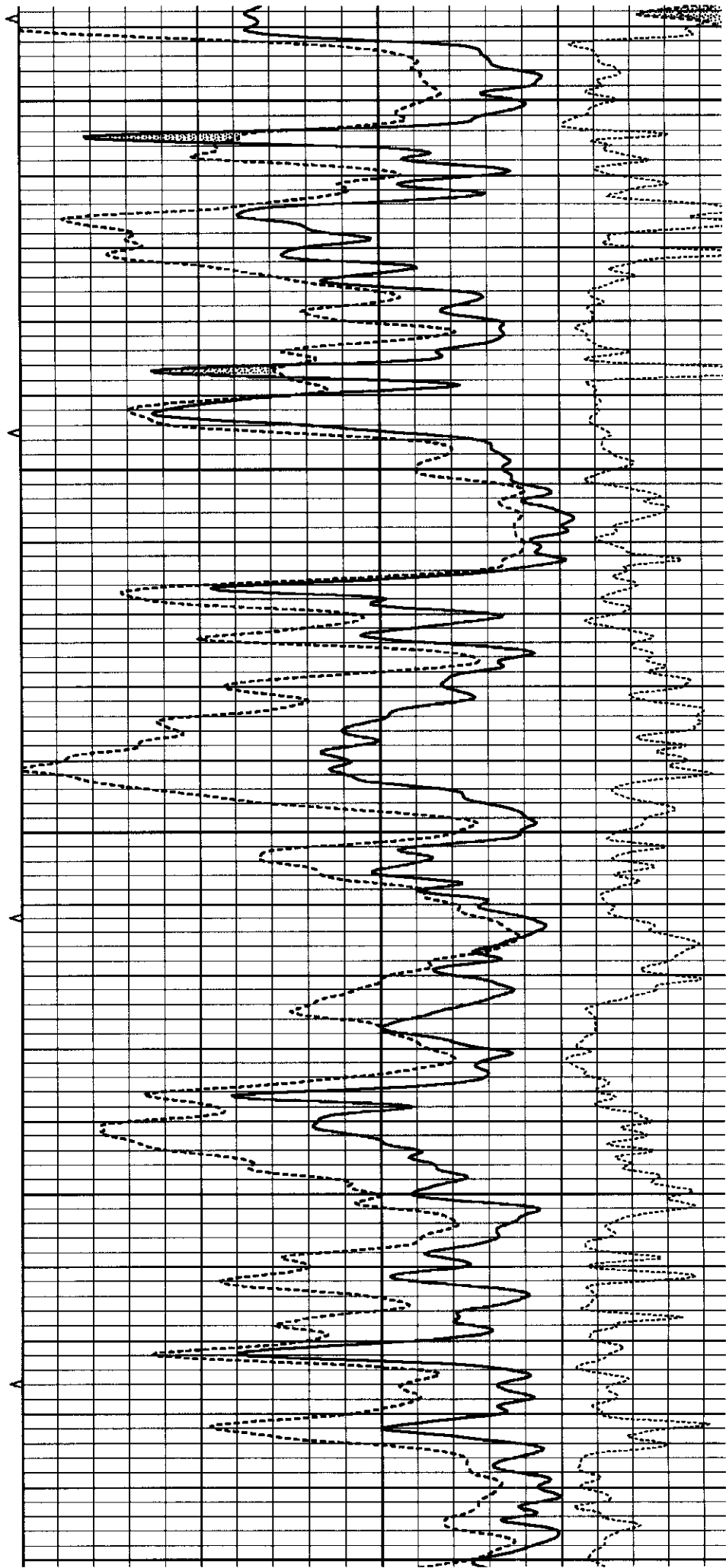
3050

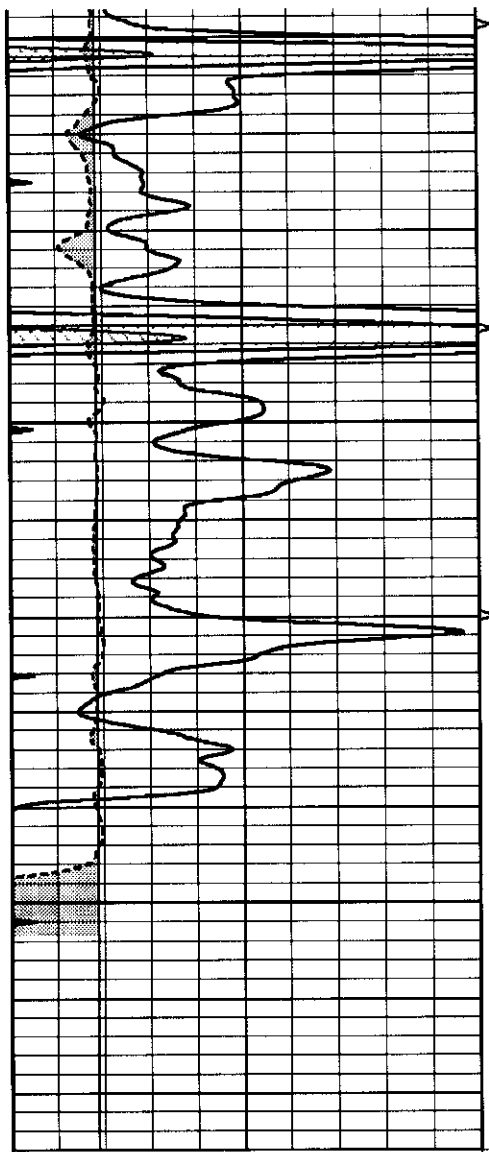
3100

3150

3200

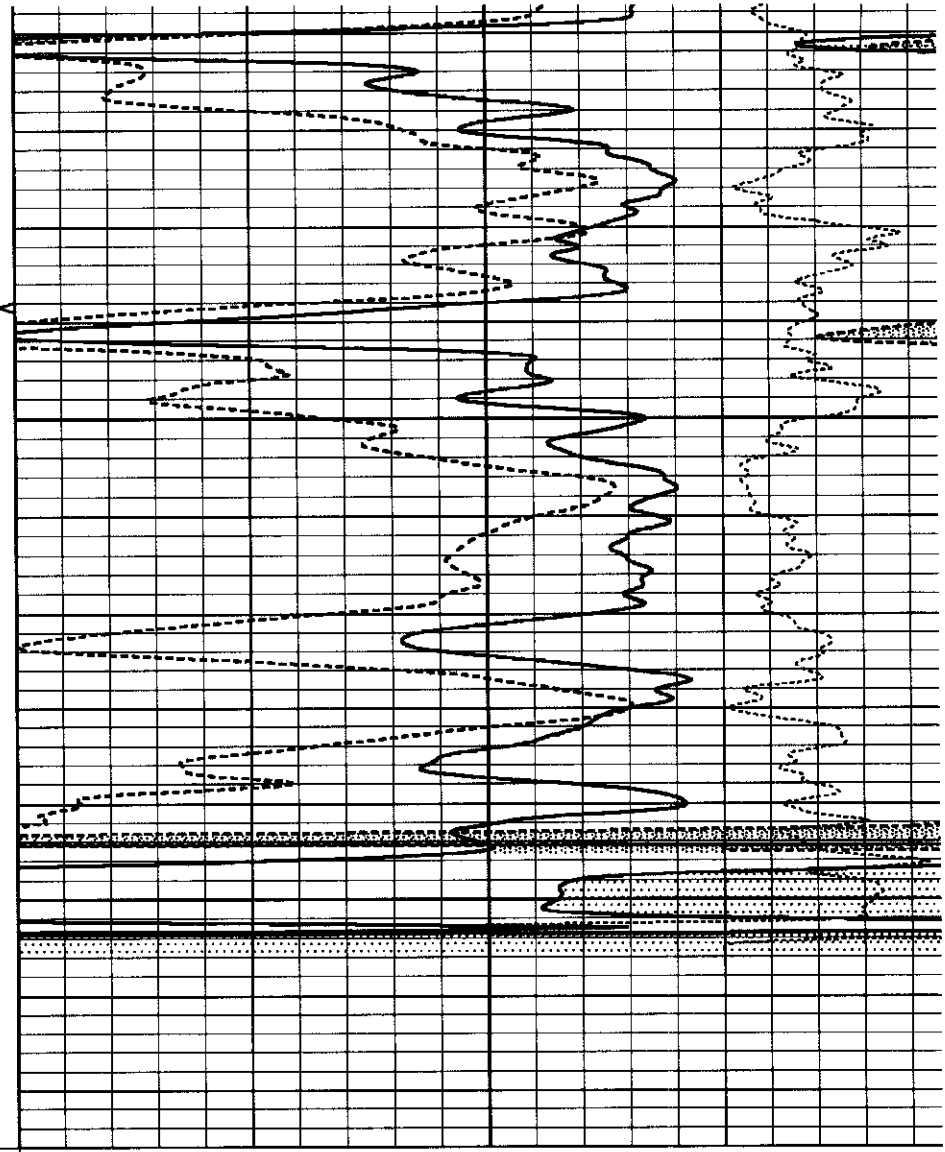
3250





3300

3350



0	GAMMA RAY (GAPI)	150	AVTX	30	COMPENSATED DENSITY (pu)	-1		
6	CALIPER (in)	16	10 (ft3)	0	30	COMPENSATED NEUTRON (pu)	-1	
0	MINMK	20	BVTX			-0.25	CORRECTION (g/cc)	0.2
			0 (ft3)	10				

Well Cederberg A 1-1

STR:1-11S-14W

Cty: Russell

State: Kansas

Log Tops:

Anhydrite	902' (+885) -12'
B/Anhydrite	939' (+848) -14'
Grand Haven	2435' (-648) -15'
Stotler	2508' (-721) -15'
Topeka	2766' (-979) -16'
Heebner	2988' (-1201) -20'
Lansing	3042' (-1255) -20'
Stark	3260' (-1473) -19'
BKC	3320' (-1533) -17'
RTD	3367' (-1580)



DRILL STEM TEST REPORT

Prepared For: **TRANS PACIFIC OIL CORPORATION**

100 S MAIN STE 200 WICHITA KS
67202+3735

ATTN:

1 -11 -14 RUSSELL

CEDERBERG 'A' #1-1

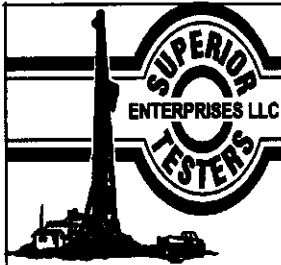
Start Date: 2010.12.16 @ 12:47:00

End Date: 2010.12.16 @ 19:45:00

Job Ticket #: 15696 DST #: 1

Superior Testers Enterprises LLC
PO Box 138 Great Bend KS 67530
1-800-792-6902

Printed: 2010.12.16 @ 18:56:02



DRILL STEM TEST REPORT

TRANS PACIFIC OIL CORPORATION

CEDERBERG 'A' #1-1

100 S MAIN STE 200 WICHITA KS 67202+3735

1 -11 -14 RUSSELL

Job Ticket: 15696

DST#: 1

ATTN:

Test Start: 2010.12.16 @ 12:47:00

GENERAL INFORMATION:

Formation: **LKC 35' ZONE**

Deviated: No Whipstock: ft (KB)

Time Tool Opened: 14:25:30

Time Test Ended: 19:45:00

Test Type: Conventional Bottom Hole (Initial)

Tester: JARED SCHECK

Unit No: 3320-GB-120

Interval: **3045.00 ft (KB) To 3080.00 ft (KB) (TVD)**

Total Depth: 3080.00 ft (KB) (TVD)

Hole Diameter: 7.88 inches Hole Condition: Poor

Reference Elevations: 1789.00 ft (KB)

1782.00 ft (CF)

KB to GR/CF: 7.00 ft

Serial #: 8419

Inside

Press@RunDepth: 61.62 psia @ 3076.00 ft (KB)

Start Date: 2010.12.16

End Date:

2010.12.16

Capacity: 5000.00 psia

Last Calib.:

2010.12.16

Start Time: 12:47:00

End Time:

19:45:00

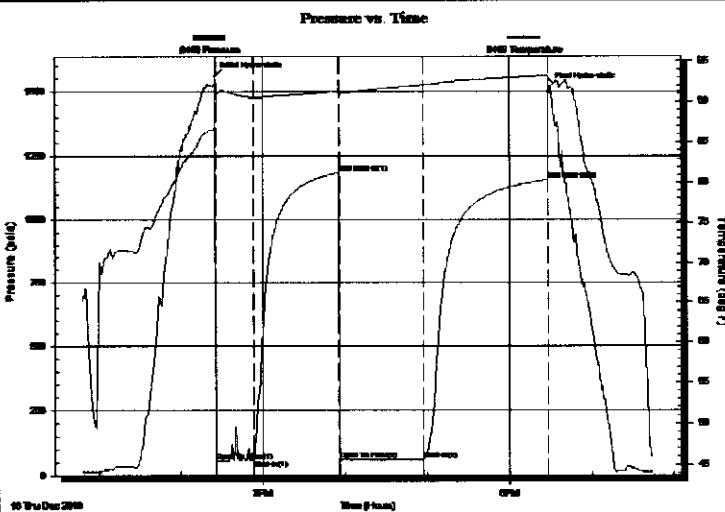
Time On Btm:

2010.12.16 @ 14:25:00

Time Off Btm:

2010.12.16 @ 18:29:00

TEST COMMENT: 30/INITIAL OPEN:WEAK BLOW BUILT 2 1/2 INCHES INTO WATER IN 30 MINUTES
 60/INITIAL SHUT IN:NO BLOW BACK
 60/FINAL OPEN:VERY WEAK SURFACE BLOW BUILT 1/2 INCH INTO WATER IN 60 MINUTES
 90/FINAL SHUT IN:NO BLOW BACK



PRESSURE SUMMARY

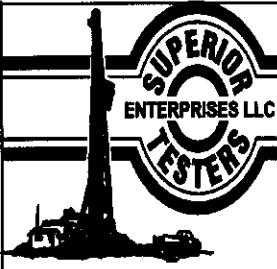
Time (Min.)	Pressure (psia)	Temp (deg F)	Annotation
0	1559.51	87.95	Initial Hydro-static
1	56.39	88.59	Open To Flow (1)
29	61.70	90.53	Shut-In(1)
91	1185.59	91.32	End Shut-In(1)
92	60.98	91.09	Open To Flow (2)
152	61.62	92.08	Shut-In(2)
243	1157.68	93.25	End Shut-In(2)
244	1514.64	92.64	Final Hydro-static

Recovery

Length (ft)	Description	Volume (bbl)
40.00	MUD	0.56

Gas Rates

Choke (inches)	Pressure (psia)	Gas Rate (Mcf/d)



DRILL STEM TEST REPORT

TRANS PACIFIC OIL CORPORATION

CEDERBERG 'A' #1-1

100 S MAIN STE 200 WICHITA KS 67202+3735

1 -11 -14 RUSSELL

Job Ticket: 15696

DST#: 1

ATTN:

Test Start: 2010.12.16 @ 12:47:00

GENERAL INFORMATION:

Formation: **LKC 35' ZONE**

Deviated: No Whipstock: ft (KB)

Time Tool Opened: 14:25:30

Time Test Ended: 19:45:00

Test Type: Conventional Bottom Hole (Initial)

Tester: JARED SCHECK

Unit No: 3320-GB-120

Interval: **3045.00 ft (KB) To 3080.00 ft (KB) (TVD)**

Reference Elevations: 1789.00 ft (KB)

Total Depth: 3080.00 ft (KB) (TVD)

1782.00 ft (CF)

Hole Diameter: 7.88 inches Hole Condition: Poor

KB to GR/CF: 7.00 ft

Serial #: 4005

Outside

Press@RunDepth: 1153.76 psia @ 3077.00 ft (KB)

Capacity: 5000.00 psia

Start Date: 2010.12.16

End Date: 2010.12.16

Last Calib.: 2010.12.16

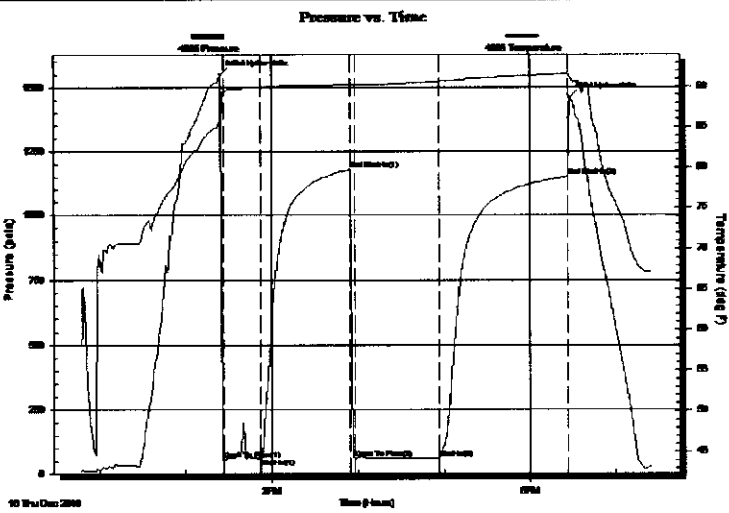
Start Time: 12:47:00

End Time: 19:25:09

Time On Btm: 2010.12.16 @ 14:24:10

Time Off Btm: 2010.12.16 @ 18:28:10

TEST COMMENT: 30/INITIAL OPEN:WEAK BLOW BUILT 2 1/2 INCHES INTO WATER IN 30 MINUTES
 60/INITIAL SHUT IN:NO BLOW BACK
 60/FINAL OPEN:VERY WEAK SURFACE BLOW BUILT 1/2 INCH INTO WATER IN 60 MINUTES
 90/FINAL SHUT IN:NO BLOW BACK



PRESSURE SUMMARY

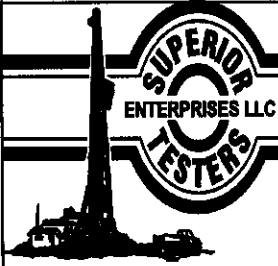
Time (Min.)	Pressure (psia)	Temp (deg F)	Annotation
0	1551.71	85.90	Initial Hydro-static
2	58.39	89.38	Open To Flow (1)
28	61.64	89.98	Shut-In(1)
90	1180.32	90.27	End Shut-In(1)
94	61.02	90.24	Open To Flow (2)
152	62.63	90.69	Shut-In(2)
242	1153.76	91.64	End Shut-In(2)
244	1462.13	91.30	Final Hydro-static

Recovery

Length (ft)	Description	Volume (bbl)
40.00	MUD	0.56

Gas Rates

	Choke (inches)	Pressure (psia)	Gas Rate (Mcf/d)



DRILL STEM TEST REPORT

TOOL DIAGRAM

TRANS PACIFIC OIL CORPORATION

CEDERBERG 'A' #1-1

100 S MAIN STE 200 WICHITA KS 67202+3735

1 -11 -14 RUSSELL

Job Ticket: 15696

DST#: 1

ATTN:

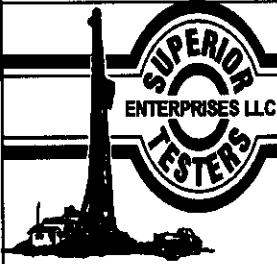
Test Start: 2010.12.16 @ 12:47:00

Tool Information

Drill Pipe:	Length: 3028.00 ft	Diameter: 3.80 inches	Volume: 42.47 bbl	Tool Weight: 1000.00 lb
Heavy Wt. Pipe:	Length: 0.00 ft	Diameter: 0.00 inches	Volume: 0.00 bbl	Weight set on Packer: 20000.00 lb
Drill Collar:	Length: 0.00 ft	Diameter: 0.00 inches	Volume: 0.00 bbl	Weight to Pull Loose: 48000.00 lb
			Total Volume: 42.47 bbl	Tool Chased 6.00 ft
Drill Pipe Above KB:	6.00 ft			String Weight: Initial 33000.00 lb
Depth to Top Packer:	3045.00 ft			Final 33000.00 lb
Depth to Bottom Packer:	ft			
Interval between Packers:	35.00 ft			
Tool Length:	58.00 ft			
Number of Packers:	2	Diameter: 6.75 inches		

Tool Comments:

Tool Description	Length (ft)	Serial No.	Position	Depth (ft)	Accum. Lengths
Change Over Sub	1.00			3023.00	
Shut-In Tool	5.00			3028.00	
Hydrolic Tool	5.00			3033.00	
Safety Joint	2.00			3035.00	
Packer	5.00			3040.00	23.00 Bottom Of Top Packer
Packer	5.00			3045.00	
Perforations	30.00			3075.00	
Recorder	1.00	8419	Inside	3076.00	
Recorder	1.00	4005	Outside	3077.00	
Bullnose	3.00			3080.00	35.00 Bottom Packers & Anchor
Total Tool Length:	58.00				



DRILL STEM TEST REPORT

FLUID SUMMARY

TRANS PACIFIC OIL CORPORATION

CEDERBERG 'A' #1-1

100 S MAIN STE 200 WICHITA KS 67202+3735

1 -11 -14 RUSSELL

Job Ticket: 15696

DST#: 1

ATTN:

Test Start: 2010.12.16 @ 12:47:00

Mud and Cushion Information

Mud Type: Gel Chem
 Mud Weight: 9.00 lb/gal
 Viscosity: 50.00 sec/qt
 Water Loss: 9.60 in³
 Resistivity: ohm.m
 Salinity: 4300.00 ppm
 Filter Cake: 1.00 inches

Cushion Type:
 Cushion Length: ft
 Cushion Volume: bbl
 Gas Cushion Type:
 Gas Cushion Pressure: psia

Oil API: deg API
 Water Salinity: ppm

Recovery Information

Recovery Table

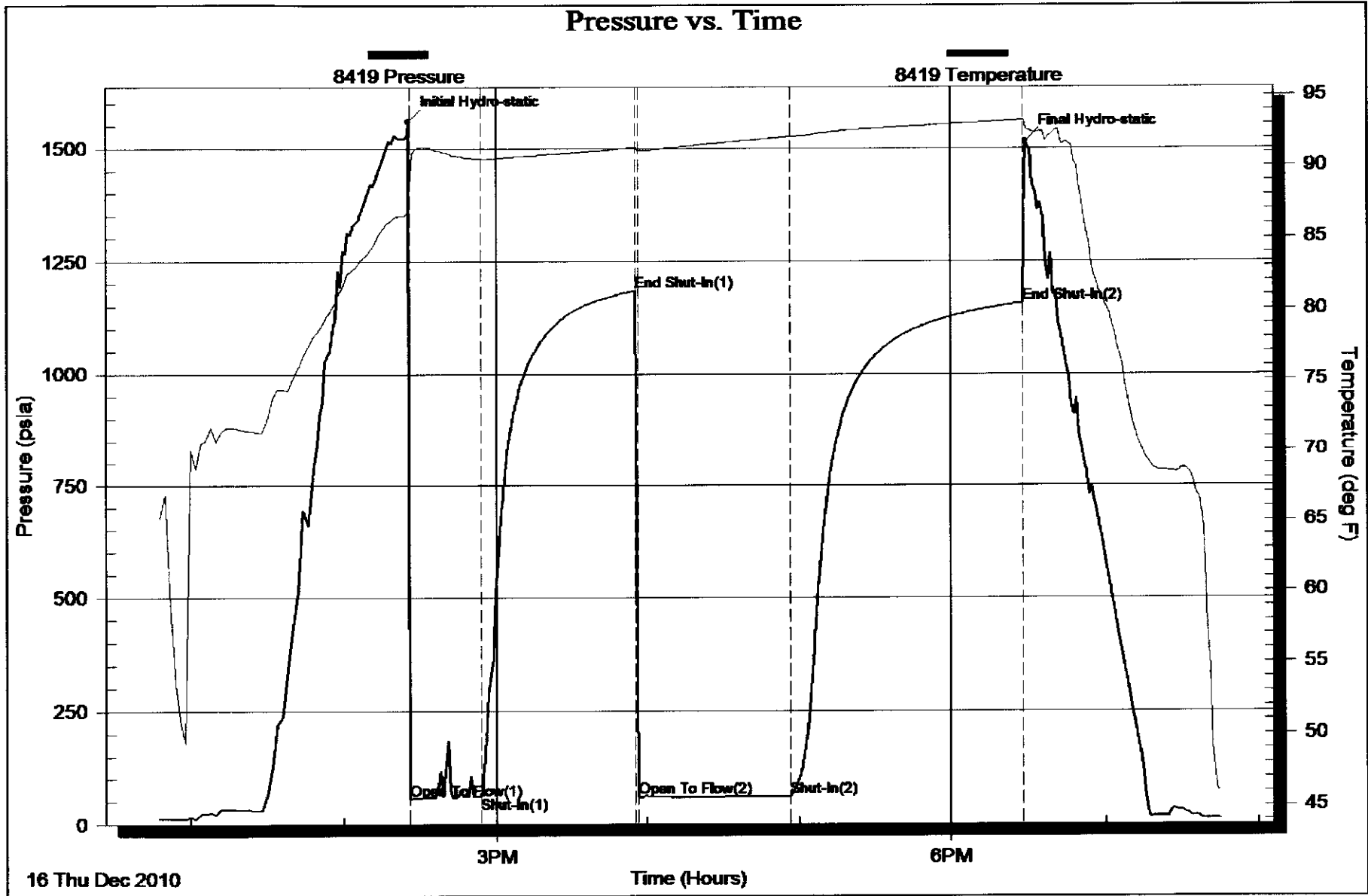
Length ft	Description	Volume bbl
40.00	MUD	0.561

Total Length: 40.00 ft Total Volume: 0.561 bbl

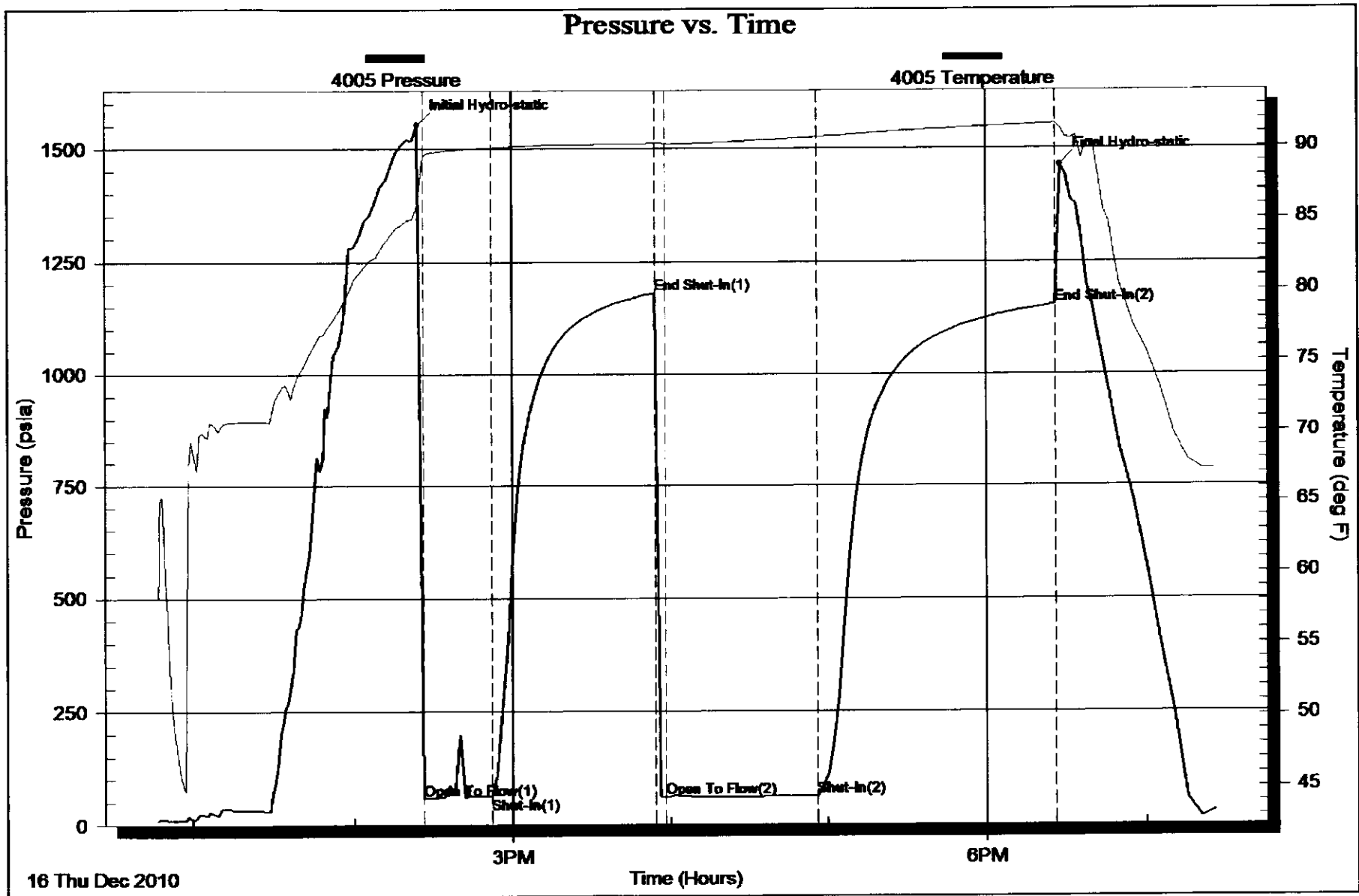
Num Fluid Samples: 0 Num Gas Bombs: 0 Serial #:

Laboratory Name: Laboratory Location:

Recovery Comments:



16 Thu Dec 2010



16 Thu Dec 2010



DRILL STEM TEST REPORT

Prepared For: **TRANS PACIFIC OIL CORPORATION**

100 S MAIN STE 200 WICHITA KS
67202+3735

ATTN:

1-11-14 RUSSELL

CEDERBERG 'A' #1-1

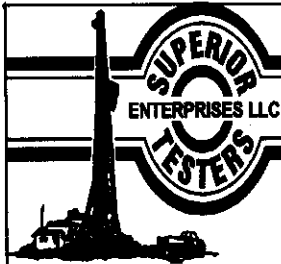
Start Date: 2010.12.17 @ 02:47:00

End Date: 2010.12.17 @ 10:12:30

Job Ticket #: 15697 DST #: 2

Superior Testers Enterprises LLC
PO Box 138 Great Bend KS 67530
1-800-792-6902

Printed: 2010.12.17 @ 10:14:48



DRILL STEM TEST REPORT

TRANS PACIFIC OIL CORPORATION

CEDERBERG 'A' #1-1

100 S MAIN STE 200 WICHITA KS 67202+3735

1 -11 -14 RUSSELL

Job Ticket: 15697

DST#: 2

ATTN:

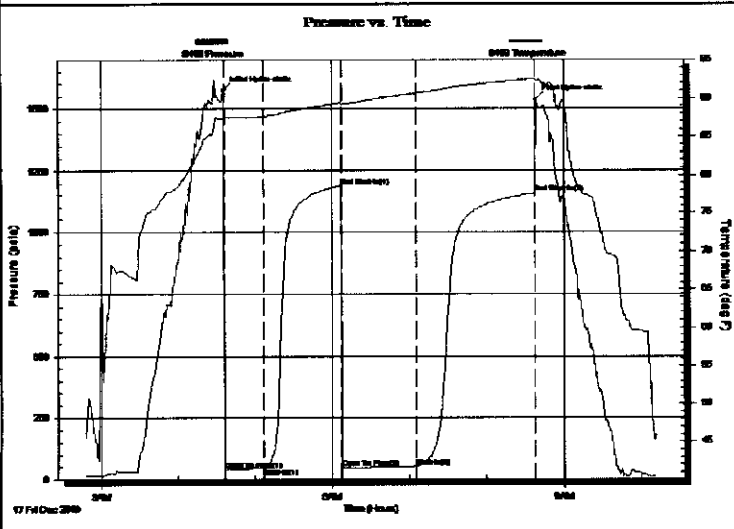
Test Start: 2010.12.17 @ 02:47:00

GENERAL INFORMATION:

Formation: **LKC 30' ZONE "C"**
 Deviated: No Whipstock: ft (KB)
 Time Tool Opened: 04:36:30
 Time Test Ended: 10:12:30
 Interval: **3080.00 ft (KB) To 3110.00 ft (KB) (TVD)**
 Total Depth: 3110.00 ft (KB) (TVD)
 Hole Diameter: 7.88 inches Hole Condition: Fair
 Test Type: Conventional Bottom Hole (Initial)
 Tester: JARED SCHECK
 Unit No: 3320-GB-120
 Reference Elevations: 1789.00 ft (KB)
 1782.00 ft (CF)
 KB to GR/CF: 7.00 ft

Serial #: 8419 Inside
 Press@RunDepth: 53.11 psia @ 3106.00 ft (KB) Capacity: 5000.00 psia
 Start Date: 2010.12.17 End Date: 2010.12.17 Last Calib.: 2010.12.17
 Start Time: 02:47:00 End Time: 10:12:30 Time On Btm: 2010.12.17 @ 04:35:30
 Time Off Btm: 2010.12.17 @ 08:38:30

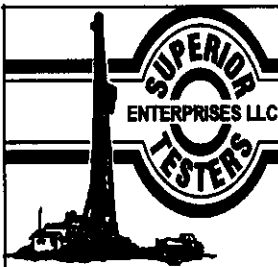
TEST COMMENT: 30/INITIAL OPEN:WEAK BUT BUILDING BLOW BUILT 1 1/2 INTI WATER IN 30 MINUTES
 60/INITIAL SHUT IN:NO BLOW BACK
 60/FINAL OPEN:VERY WEAK SURFACE BLOW BUILT 1 INCH INTO WATER IN 60 MINUTES
 90/FINAL SHUT IN:NO BLOW BACK



PRESSURE SUMMARY			
Time (Min.)	Pressure (psia)	Temp (deg F)	Annotation
0	1574.45	87.36	Initial Hydro-static
1	40.43	87.33	Open To Flow (1)
32	46.15	87.63	Shut-In(1)
91	1190.18	89.42	End Shut-In(1)
92	47.27	89.24	Open To Flow (2)
150	53.11	90.69	Shut-In(2)
243	1159.15	92.58	End Shut-In(2)
243	1535.86	92.39	Final Hydro-static

Recovery		
Length (ft)	Description	Volume (bbl)
20.00	MUDDY WATER 30%MUD 70%WATER	0.28
0.00	CHLORIDES 33,000	0.00
0.00	RESISTIVITY .1 @ 77 DEGREES	0.00

Gas Rates			
	Choke (inches)	Pressure (psia)	Gas Rate (Mcf/d)



DRILL STEM TEST REPORT

TRANS PACIFIC OIL CORPORATION

CEDERBERG 'A' #1-1

100 S MAIN STE 200 WICHITA KS 67202+3735

1 -11 -14 RUSSELL

Job Ticket: 15697

DST#: 2

ATTN:

Test Start: 2010.12.17 @ 02:47:00

GENERAL INFORMATION:

Formation: **LKC 30' ZONE "C"**

Deviated: No Whipstock: ft (KB)

Time Tool Opened: 04:36:30

Time Test Ended: 10:12:30

Test Type: Conventional Bottom Hole (Initial)

Tester: JARED SCHECK

Unit No: 3320-GB-120

Interval: **3080.00 ft (KB) To 3110.00 ft (KB) (TVD)**

Reference Elevations: 1789.00 ft (KB)

Total Depth: 3110.00 ft (KB) (TVD)

1782.00 ft (CF)

Hole Diameter: 7.88 inches Hole Condition: Fair

KB to GR/CF: 7.00 ft

Serial #: 4005

Outside

Press@RunDepth: 1155.66 psia @ 3107.00 ft (KB)

Capacity: 5000.00 psia

Start Date: 2010.12.17

End Date:

2010.12.17

Last Calib.:

2010.12.17

Start Time: 02:47:00

End Time:

10:05:10

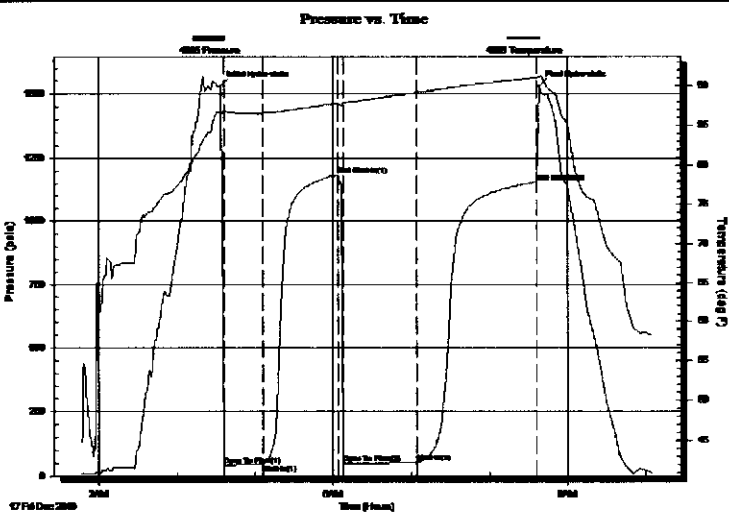
Time On Btm:

2010.12.17 @ 04:34:09

Time Off Btm:

2010.12.17 @ 08:38:10

TEST COMMENT: 30/INITIAL OPEN:WEAK BUT BUILDING BLOW BUILT 1 1/2 INTI WATER IN 30 MINUTES
 60/INITIAL SHUT IN:NO BLOW BACK
 60/FINAL OPEN:VERY WEAK SURFACE BLOW BUILT 1 INCH INTO WATER IN 60 MINUTES
 90/FINAL SHUT IN:NO BLOW BACK



PRESSURE SUMMARY

Time (Min.)	Pressure (psia)	Temp (deg F)	Annotation
0	1530.50	86.57	Initial Hydro-static
3	41.27	86.73	Open To Flow (1)
33	46.47	86.53	Shut-In(1)
91	1185.01	87.79	End Shut-In(1)
95	48.34	87.86	Open To Flow (2)
151	53.58	89.13	Shut-In(2)
243	1155.66	90.99	End Shut-In(2)
245	1532.12	91.14	Final Hydro-static

Recovery

Length (ft)	Description	Volume (bbl)
20.00	MUDDY WATER 30%MUD 70%WATER	0.28
0.00	CHLORIDES 33,000	0.00
0.00	RESISTIVITY .1 @ 77 DEGREES	0.00

Gas Rates

	Choke (inches)	Pressure (psia)	Gas Rate (Mcf/d)



DRILL STEM TEST REPORT

TOOL DIAGRAM

TRANS PACIFIC OIL CORPORATION

CEDERBERG 'A' #1-1

100 S MAIN STE 200 WICHITA KS 67202+3735

1 -11 -14 RUSSELL

Job Ticket: 15697

DST#: 2

ATTN:

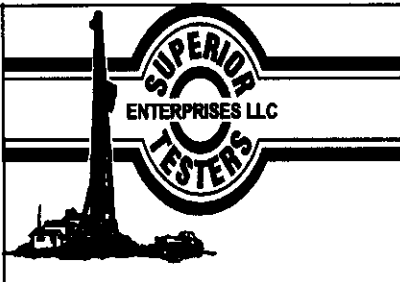
Test Start: 2010.12.17 @ 02:47:00

Tool Information

Drill Pipe:	Length: 3087.00 ft	Diameter: 3.80 inches	Volume: 43.30 bbl	Tool Weight: 1000.00 lb
Heavy Wt. Pipe:	Length: 0.00 ft	Diameter: 0.00 inches	Volume: 0.00 bbl	Weight set on Packer: 20000.00 lb
Drill Collar:	Length: 0.00 ft	Diameter: 0.00 inches	Volume: 0.00 bbl	Weight to Pull Loose: 38000.00 lb
			<u>Total Volume: 43.30 bbl</u>	Tool Chased 0.00 ft
Drill Pipe Above KB:	30.00 ft			String Weight: Initial 33000.00 lb
Depth to Top Packer:	3080.00 ft			Final 33000.00 lb
Depth to Bottom Packer:	ft			
Interval between Packers:	30.00 ft			
Tool Length:	53.00 ft			
Number of Packers:	2	Diameter: 6.75 inches		

Tool Comments:

Tool Description	Length (ft)	Serial No.	Position	Depth (ft)	Accum. Lengths
Change Over Sub	1.00			3058.00	
Shut-In Tool	5.00			3063.00	
Hydraulic Tool	5.00			3068.00	
Safety Joint	2.00			3070.00	
Packer	5.00			3075.00	23.00 Bottom Of Top Packer
Packer	5.00			3080.00	
Perforations	25.00			3105.00	
Recorder	1.00	8419	Inside	3106.00	
Recorder	1.00	4005	Outside	3107.00	
Bullnose	3.00			3110.00	30.00 Bottom Packers & Anchor
Total Tool Length:	53.00				



DRILL STEM TEST REPORT

FLUID SUMMARY

TRANS PACIFIC OIL CORPORATION

CEDERBERG 'A' #1-1

100 S MAIN STE 200 WICHITA KS 67202+3735

1 -11 -14 RUSSELL

Job Ticket: 15697

DST#: 2

ATTN:

Test Start: 2010.12.17 @ 02:47:00

Mud and Cushion Information

Mud Type: Gel Chem
 Mud Weight: 9.00 lb/gal
 Viscosity: 50.00 sec/qt
 Water Loss: 9.60 in³
 Resistivity: ohm.m
 Salinity: 4300.00 ppm
 Filter Cake: 1.00 inches

Cushion Type:
 Cushion Length: ft
 Cushion Volume: bbl
 Gas Cushion Type:
 Gas Cushion Pressure: psia

Oil API: deg API
 Water Salinity: ppm

Recovery Information

Recovery Table

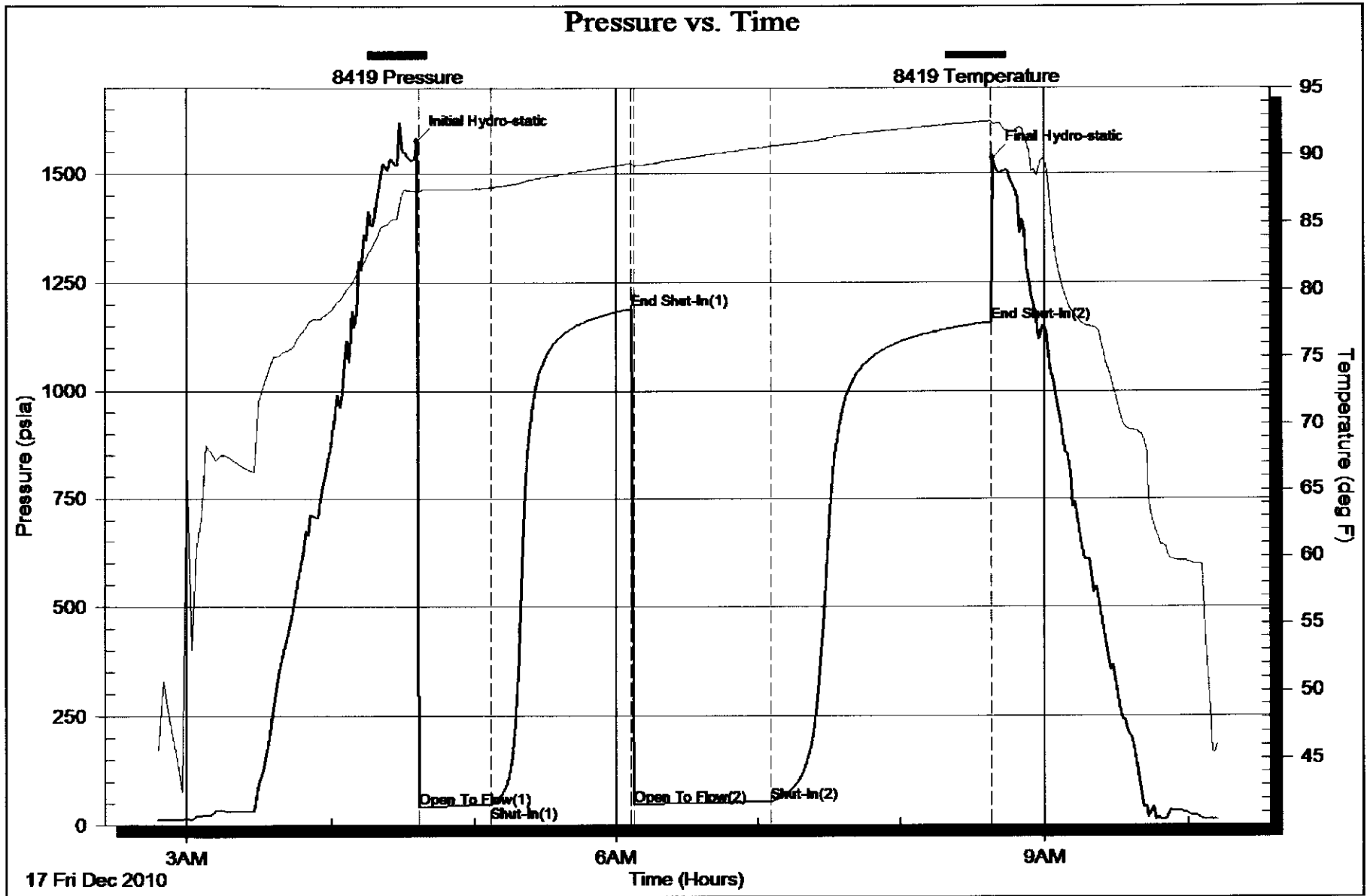
Length ft	Description	Volume bbl
20.00	MUDDY WATER 30%MUD 70%WATER	0.281
0.00	CHLORIDES 33,000	0.000
0.00	RESISTIVITY .1 @ 77 DEGREES	0.000

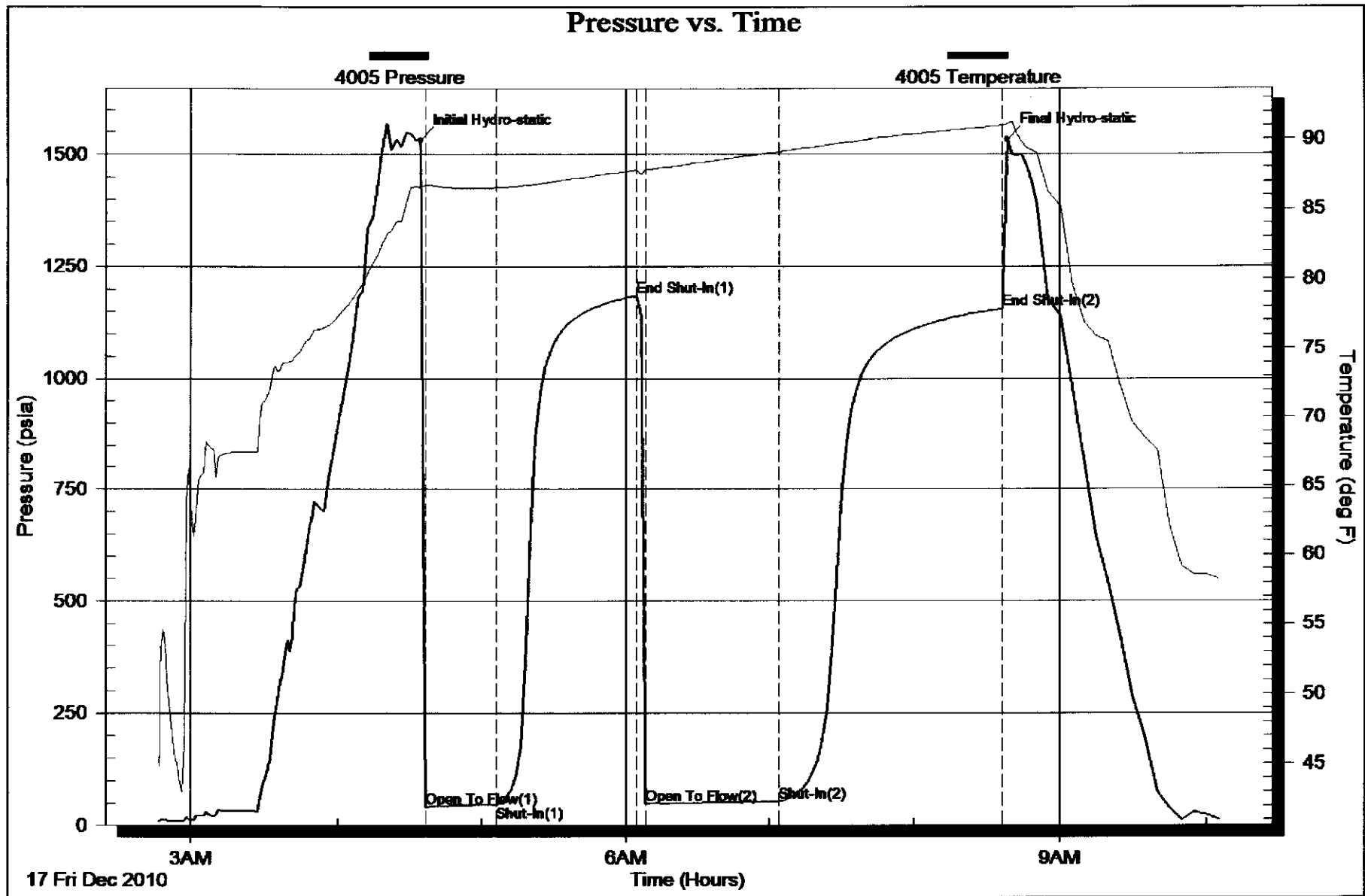
Total Length: 20.00 ft Total Volume: 0.281 bbl

Num Fluid Samples: 0 Num Gas Bombs: 0 Serial #:

Laboratory Name: Laboratory Location:

Recovery Comments:







*Mark Parkinson, Governor
Thomas E. Wright, Chairman
Joseph F. Harkins, Commissioner
Ward Loyd, Commissioner*

December 30, 2010

Glenna Lowe
Trans Pacific Oil Corporation
100 S MAIN STE 200
WICHITA, KS 67202-3735

Re: ACO1
API 15-167-23679-00-00
CEDERBERG 'A' 1-1
NW/4 Sec.01-11S-14W
Russell County, Kansas

Dear Production Department:

We are herewith requesting that the Well Completion Form ACO-1 and attached information for the subject well be held confidential for a period of two years.

Should you have any questions or need additional information regarding subject well, please contact our office.

Respectfully,
Glenna Lowe

ALLIED CEMENTING CO., LLC. 034044

REMIT TO P.O. BOX 31
RUSSELL, KANSAS 67665

SERVICE POINT:

Russell

DATE <u>12-12-10</u>	SEC. <u>1</u>	TWP. <u>11S</u>	RANGE <u>14W</u>	CALLED OUT	ON LOCATION	JOB START <u>1:00 PM</u>	JOB FINISH <u>1:30 PM</u>
LEASE <u>Caderbeisa</u>	WELL # <u>1-1</u>		LOCATION <u> Hwy 281 + Hwy 18 Jct.</u>		COUNTY <u>Russell</u>	STATE <u>Ks.</u>	
OLD OR <input checked="" type="radio"/> NEW (Circle one)			<u>1/2 E 1 N 1/2 E Sinto</u>				

CONTRACTOR American Eagle Rig #2

TYPE OF JOB Surface Sib

HOLE SIZE 12 1/4 T.D. 265

CASING SIZE 8 5/8 DEPTH 214.87

TUBING SIZE DEPTH

DRILL PIPE DEPTH

TOOL DEPTH

PRES. MAX MINIMUM

MEAS. LINE SHOE JOINT

CEMENT LEFT IN CSG. 15'

PERFS.

DISPLACEMENT 15,91 bbl

OWNER _____

CEMENT AMOUNT ORDERED 165 Con-32cc

28.61

COMMON	<u>165</u>	@ <u>13.50</u>	<u>2227.50</u>
POZMIX		@	
GEL	<u>3</u>	@ <u>20.25</u>	<u>60.75</u>
CHLORIDE	<u>6</u>	@ <u>51.50</u>	<u>309.00</u>
ASC		@	
		@	
		@	
		@	
		@	
		@	
		@	
		@	
		@	
HANDLING	<u>165</u>	@ <u>2.25</u>	<u>371.25</u>
MILEAGE	<u>10.56</u>	@ <u>31.50</u>	<u>333.50</u>
			TOTAL <u>3,282.00</u>

EQUIPMENT

PUMP TRUCK CEMENTER Shane, Hartl

417 HELPER # Ron

BULK TRUCK

378 DRIVER Johney

BULK TRUCK

DRIVER

REMARKS:

Ran 6 hrs + Landig St.

Est Circulation.

Mixed 165 lbs.

Cement Circulated!

SERVICE

DEPTH OF JOB _____

PUMP TRUCK CHARGE _____ 991.00

EXTRA FOOTAGE @ _____

MILEAGE 19 @ 7.00 133.00

MANIFOLD @ _____

@ _____

@ _____

TOTAL 1124.00

CHARGE TO: Trans Pacific

STREET _____

CITY _____ STATE _____ ZIP _____

RECEIVED
DEC 20 2010

Thanks!

To Allied Cementing Co., LLC.
You are hereby requested to rent cementing equipment and furnish cementer and helper(s) to assist owner or contractor to do work as is listed. The above work was done to satisfaction and supervision of owner agent or contractor. I have read and understand the "GENERAL TERMS AND CONDITIONS" listed on the reverse side.

PRINTED NAME _____

SIGNATURE Bryanford Kuhn

PLUG & FLOAT EQUIPMENT

_____	@	_____
_____	@	_____
_____	@	_____
_____	@	_____
_____	@	_____
_____	@	_____
TOTAL _____		

SALES TAX (If Any) _____

TOTAL CHARGES 1124.00

DISCOUNT _____ IF PAID IN 30 DAYS

ALLIED CEMENTING CO., LLC. 034052

REMIT TO P.O. BOX 31
RUSSELL, KANSAS 67665

SERVICE POINT:
Russell

DATE <u>12-18-10</u>	SEC. <u>1</u>	TWP. <u>11</u>	RANGE <u>14</u>	CALLED OUT	ON LOCATION	JOB START <u>3:00pm</u>	JOB FINISH <u>4:00pm</u>
LEASE <u>Cedar</u>		WELL # <u>14</u>		LOCATION <u>Russell #281 N 10 Hwy 10</u>		COUNTY <u>Russell</u>	STATE <u>KS</u>
OLD OR <u>NEW</u> (Circle one)				<u>1/2 E 1 N 1 E 10 S 10 T 6</u>			

CONTRACTOR American Eagle #3

TYPE OF JOB PTA

HOLE SIZE 7 7/8 T.D. 3676

CASING SIZE _____ DEPTH _____

TUBING SIZE _____ DEPTH _____

DRILL PIPE 4 1/2 DEPTH 920

TOOL _____ DEPTH _____

PRES. MAX _____ MINIMUM _____

MEAS. LINE _____ SHOE JOINT _____

CEMENT LEFT IN CSG. _____

PERFS. _____

DISPLACEMENT _____

OWNER _____

CEMENT AMOUNT ORDERED 205 60% 48 Gal

1/4" F.I.

EQUIPMENT

PUMP TRUCK CEMENTER Shane, Heath

417 HELPER Kevin

BULK TRUCK DRIVER Gary

384 DRIVER _____

BULK TRUCK DRIVER _____

_____ DRIVER _____

COMMON	<u>123</u>	@	<u>13.50</u>	<u>1660.50</u>
POZMIX	<u>82</u>	@	<u>7.55</u>	<u>619.10</u>
GEL	<u>7</u>	@	<u>20.25</u>	<u>141.75</u>
CHLORIDE		@		
ASC		@		
		@		
		@		
		@		
		@		
		@		
		@		
HANDLING	<u>205</u>	@	<u>2.25</u>	<u>461.25</u>
MILEAGE	<u>110/sk/ptc</u>			<u>389.50</u>
TOTAL				<u>3272.10</u>

REMARKS:

<u>920'</u>	<u>25 sks</u>
<u>570'</u>	<u>100 sks</u>
<u>370'</u>	<u>40 sks</u>
<u>40'</u>	<u>15 sks</u>
<u>Rot Hole</u>	<u>30 sks</u>

SERVICE

DEPTH OF JOB _____

PUMP TRUCK CHARGE _____ 998.00

EXTRA FOOTAGE _____ @ _____

MILEAGE 19 @ 7.00 133.00

MANIPULATOR @ _____