



KANSAS CORPORATION COMMISSION 1095044
OIL & GAS CONSERVATION DIVISION

Form ACO-1
June 2009
Form Must Be Typed
Form must be Signed
All blanks must be Filled

WELL COMPLETION FORM
WELL HISTORY - DESCRIPTION OF WELL & LEASE

OPERATOR: License # 6768
Name: Carrie Exploration & Development, a General Partnership
Address 1: 210 W 22ND
Address 2: _____
City: HAYS State: KS Zip: 67601 + _____
Contact Person: RON HEROLD
Phone: (913) 961-2760
CONTRACTOR: License # 33350
Name: Southwind Drilling, Inc.
Wellsite Geologist: HERB DEINES
Purchaser: _____

Designate Type of Completion:
 New Well Re-Entry Workover
 Oil WSW SWD SIOW
 Gas D&A ENHR SIGW
 OG GSW Temp. Abd.
 CM (Coal Bed Methane)
 Cathodic Other (Core, Expl., etc.): _____

If Workover/Re-entry: Old Well Info as follows:
Operator: _____
Well Name: _____
Original Comp. Date: _____ Original Total Depth: _____
 Deepening Re-perf. Conv. to ENHR Conv. to SWD
 Conv. to GSW
 Plug Back: _____ Plug Back Total Depth
 Commingled Permit #: _____
 Dual Completion Permit #: _____
 SWD Permit #: _____
 ENHR Permit #: _____
 GSW Permit #: _____
9/15/2012 9/22/2012 9/23/2012
Spud Date or Date Reached TD Completion Date or
Recompletion Date Recompletion Date

API No. 15 - 15-009-25750-00-00
Spot Description: _____
NE_NE_SW_NW Sec. 35 Twp. 19 S. R. 11 East West
3711 Feet from North / South Line of Section
4019 Feet from East / West Line of Section
Footages Calculated from Nearest Outside Section Corner:
 NE NW SE SW
County: Barton
Lease Name: Sieker Well #: C-2
Field Name: _____
Producing Formation: ARBUCKLE
Elevation: Ground: 1770 Kelly Bushing: 1781
Total Depth: 3400 Plug Back Total Depth: _____
Amount of Surface Pipe Set and Cemented at: 243 Feet
Multiple Stage Cementing Collar Used? Yes No
If yes, show depth set: 1551 Feet
If Alternate II completion, cement circulated from: _____
feet depth to: _____ w/ _____ sx cmt.

Drilling Fluid Management Plan
(Data must be collected from the Reserve Pit)
Chloride content: 60000 ppm Fluid volume: 400 bbls
Dewatering method used: Hauled to Disposal
Location of fluid disposal if hauled offsite:
Operator Name: BOB'S OIL SERVICE
Lease Name: SIEKER License #: 32408
Quarter NW Sec. 35 Twp. 19 S. R. 11 East West
County: BARTON Permit #: D-26,497

AFFIDAVIT

I am the affiant and I hereby certify that all requirements of the statutes, rules and regulations promulgated to regulate the oil and gas industry have been fully complied with and the statements herein are complete and correct to the best of my knowledge.

Submitted Electronically

KCC Office Use ONLY

Letter of Confidentiality Received
Date: _____
 Confidential Release Date: _____
 Wireline Log Received
 Geologist Report Received
 UIC Distribution
ALT I II III Approved by: Deanna Garrison Date: 01/16/2013



1095044

Operator Name: Carrie Exploration & Development, a General Partnership Lease Name: Sieker Well #: C-2
 Sec. 35 Twp. 19 S. R. 11 East West County: Barton

INSTRUCTIONS: Show important tops and base of formations penetrated. Detail all cores. Report all final copies of drill stems tests giving interval tested, time tool open and closed, flowing and shut-in pressures, whether shut-in pressure reached static level, hydrostatic pressures, bottom hole temperature, fluid recovery, and flow rates if gas to surface test, along with final chart(s). Attach extra sheet if more space is needed. Attach complete copy of all Electric Wire-line Logs surveyed. Attach final geological well site report.

Drill Stem Tests Taken <i>(Attach Additional Sheets)</i>	<input checked="" type="checkbox"/> Yes <input type="checkbox"/> No	<input checked="" type="checkbox"/> Log	Formation (Top), Depth and Datum	<input type="checkbox"/> Sample
Samples Sent to Geological Survey	<input type="checkbox"/> Yes <input checked="" type="checkbox"/> No	Name Attached	Top Attached	Datum Attached
Cores Taken	<input type="checkbox"/> Yes <input checked="" type="checkbox"/> No			
Electric Log Run	<input checked="" type="checkbox"/> Yes <input type="checkbox"/> No			
Electric Log Submitted Electronically <i>(If no, Submit Copy)</i>	<input checked="" type="checkbox"/> Yes <input type="checkbox"/> No			
List All E. Logs Run:				
DUAL INDUCTION LOG DUAL COMPENSATED POROSITY LOG MICRORESISTIVITY LOG				

CASING RECORD <input checked="" type="checkbox"/> New <input type="checkbox"/> Used							
Report all strings set-conductor, surface, intermediate, production, etc.							
Purpose of String	Size Hole Drilled	Size Casing Set (In O.D.)	Weight Lbs. / Ft.	Setting Depth	Type of Cement	# Sacks Used	Type and Percent Additives
SURFACE	12.25	8.625	23	243	COMMON	175	2%GEL,3%CC
PRODUCTION	7.875	5.5	14	3395	EA2	145	

ADDITIONAL CEMENTING / SQUEEZE RECORD				
Purpose:	Depth Top Bottom	Type of Cement	# Sacks Used	Type and Percent Additives
<input checked="" type="checkbox"/> Perforate <input type="checkbox"/> Protect Casing <input type="checkbox"/> Plug Back TD <input type="checkbox"/> Plug Off Zone	0-1551			
	-			

Shots Per Foot	PERFORATION RECORD - Bridge Plugs Set/Type Specify Footage of Each Interval Perforated	Acid, Fracture, Shot, Cement Squeeze Record <i>(Amount and Kind of Material Used)</i>	Depth
4	3314 to 3320	100 gal 15% NEFE, 250 15% NEFE,	3314 to 3320
		600 gal 20% 20% NEFE	

TUBING RECORD:	Size: <u>2 7/8</u>	Set At: <u>3331</u>	Packer At:	Liner Run: <input type="checkbox"/> Yes <input type="checkbox"/> No
Date of First, Resumed Production, SWD or ENHR.	Producing Method:			
<u>10/11/2012</u>	<input type="checkbox"/> Flowing <input checked="" type="checkbox"/> Pumping <input type="checkbox"/> Gas Lift <input type="checkbox"/> Other <i>(Explain)</i> _____			
Estimated Production Per 24 Hours	Oil Bbls.	Gas Mcf	Water Bbls.	Gas-Oil Ratio Gravity
	<u>11</u>		<u>60</u>	<u>43</u>

DISPOSITION OF GAS: <input type="checkbox"/> Vented <input type="checkbox"/> Sold <input type="checkbox"/> Used on Lease <i>(If vented, Submit ACO-18.)</i>	METHOD OF COMPLETION: <input type="checkbox"/> Open Hole <input checked="" type="checkbox"/> Perf. <input type="checkbox"/> Dually Comp. <input type="checkbox"/> Commingled <i>(Submit ACO-5)</i> <i>(Submit ACO-4)</i> <input type="checkbox"/> Other <i>(Specify)</i> _____	PRODUCTION INTERVAL: <u>3314 to 3320</u>
---	---	---

Form	ACO1 - Well Completion
Operator	Carrie Exploration & Development, a General Partnership
Well Name	Sieker C-2
Doc ID	1095044

Tops

TOPEKA	2625	-844
HEEBNER SHALE	2886	-1105
DOUGLAS SHALE	2918	-1137
BROWN LIME	3012	-1231
LKC	3030	-1249
BKC	3282	-1501
ARBUCKLE	3300	-1519
RTD	3400	-1619
LTD	3395	-1614

OPERATOR

Company: CARRIE EXPLORATION and DEVELOPMENT
 Address: 210 W 22nd Street
 HAYS, KANSAS 67601

Contact Geologist: RON HEROLD
 Contact Phone Nbr: 913-961-2760
 Well Name: SIEKER # C-2
 Location: NE NE SW NW Sec.35-19s-11w API: 15-009-25,750-00-00
 Pool: INFIELD Field: CHASE-SILICA
 State: KANSAS Country: USA

Scale 1:240 Imperial

Well Name: SIEKER # C-2
 Surface Location: NE NE SW NW Sec.35-19s-11w
 Bottom Location:
 API: 15-009-25,750-00-00
 License Number: 6768
 Spud Date: 9/15/2012 Time: 3:00 PM
 Region: BARTON COUNTY
 Drilling Completed: 9/21/2012 Time: 11:28 PM
 Surface Coordinates: 3711' FSL & 4019' FEL
 Bottom Hole Coordinates:
 Ground Elevation: 1769.00ft
 K.B. Elevation: 1781.00ft
 Logged Interval: 2200.00ft To: 3400.00ft
 Total Depth: 3400.00ft
 Formation: ARBUCKLE
 Drilling Fluid Type: CHEMICAL/FRESH WATER GEL

SURFACE CO-ORDINATES

Well Type: Vertical Latitude:
 Longitude:
 N/S Co-ord: 3711' FSL
 E/W Co-ord: 4019' FEL

LOGGED BY

Company: SOLUTIONS CONSULTING
 Address: 108 W 35TH
 HAYS, KS 67601

Phone Nbr: (785) 639-1337
 Logged By: Geologist Name: HERB DEINES

CONTRACTOR

Contractor: SOUTHWIND DRILLING INC.
 Rig #: 70
 Rig Type: MUD ROTARY
 Spud Date: 9/15/2012 Time: 3:00 PM
 TD Date: 9/21/2012 Time: 11:28 PM
 Rig Release: 9/22/2012 Time: 8:00 PM

ELEVATIONS

K.B. Elevation: 1781.00ft Ground Elevation: 1769.00ft
 K.B. to Ground: 12.00ft

NOTES

DECISION BY ALL PARTIES TO RUN CASING TO FURTHER TEST AND DEVELOP ARBUCKLE AND LANSING-KANSAS CITY ZONES OF INTEREST BASED ON FAVORABLE STRUCTURE AND LOG ANALYSIS.

WELL LOGGED BY PIONEER ENERGY SERVICES: DUAL INDUCTION LOG, DUAL COMPENSATED POROSITY LOG AND MICRORESISTIVITY LOG

DRILL STEM TESTING BY SUPERIOR TESTERS ENTERPRISES,LLC- 2 DSTS

FORMATION TOPS SUMMARY AND CHRONOLOGY OF DAILY ACTIVITY

SEIKER C # 2

3711' FSL & 4029' FEL, NW/4

Sec.35-19s-11w


1769' GL 1781' KB

<u>FORMATION</u>	<u>SAMPLE TOPS</u>	<u>LOG TOPS</u>
Topeka	2630- 849	2625- 844
Heebner Shale	2894-1113	2886-1105
Toronto	2913-1132	2903-1122
Douglas Shale	2925-1144	2918-1137
Brown Lime	3017-1236	3012-1231
LKC	3038-1257	3030-1249
BKC	3288-1507	3282-1501
Arbuckle	3304-1523	3300-1519
RTD	3400-1619	
LTD		3395-1614

SUMMARY OF DAILY ACTIVITY

9-15-12	RU, Spud, set 8 5/8" surface casing to 242.8' with 175 sacks Common, 2 %Gel, 3%CC, plug down 9:00 PM, Slope ½ degree
9-16-12	352', drilling
9-17-12	1227', drilling, pump problems
9-18-12	1887', drilling, mud up 2100' for samples at 2250'
9-19-12	2700', drilling
9-20-12	3115', drilling, short trip 25 stands, DST # 1, 3090'-3115'
9-21-12	3300', drilling, CFS, DST # 2, 3284'-3308', RTD 11:28PM
9-22-12	3400', logging, run production casing, plug down 8:00PM

DST # 1 TEST SUMMARY

	DRILL STEM TEST REPORT	
	Carrie Exploration & Development	36-19-11 Barton
	210 W 22nd Hays KS 67601	Selker c-2
ATTN: Herb Deines	Job Ticket: 17811 DST#: 1	
	Test Start: 2012.09.20 @ 08:47:00	

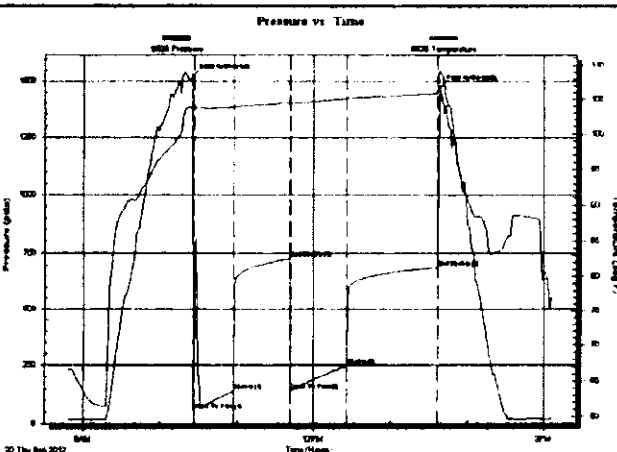
GENERAL INFORMATION:

Formation: Lansing " F "	Test Type: Conventional Bottom Hole (Initial)
Deviated: No Whipstock ft (KB)	Tester: Jared Scheck
Time Tool Opened: 10:26:30	Unit No: 3320-Great Bend-
Time Test Ended: 15:06:30	Reference Elevations: 1781.00 ft (KB)
Interval: 3090.00 ft (KB) To 3115.00 ft (KB) (TVD)	1769.00 ft (CF)
Total Depth: 3115.00 ft (KB) (TVD)	KB to GR/CF: 12.00 ft
Hole Diameter: 7.88 inches Hole Condition: Poor	

Serial #: 8525

Press@RunDepth: 248.37 psia @ ft (KB)	Capacity: 5000.00 psia
Start Date: 2012.09.20 End Date: 2012.09.20	Last Calib: 2012.09.20
Start Time: 08:47:00 End Time: 15:06:30	Time On Btm: 2012.09.20 @ 10:25:30
	Time Off Btm: 2012.09.20 @ 13:39:00

TEST COMMENT: 1st Opening 30 Minutes-Fair blow built bottom of bucket in 15 minutes
 1st Shut-in 45 Minutes-No blow back
 2nd Opening 45 Minutes-Fair blow built bottom of bucket in 15 minutes
 2nd Shut-in 60 Minutes-No blow back



PRESSURE SUMMARY

Time (Min.)	Pressure (psia)	Temp (deg F)	Annotation
0	1522.80	103.78	Initial Hydro-static
1	54.87	103.88	Open To Flow (1)
32	140.11	103.80	Shut-In(1)
76	723.84	104.45	End Shut-In(1)
77	140.39	104.39	Open To Flow (2)
121	248.37	104.99	Shut-In(2)
191	688.36	105.83	End Shut-In(2)
194	1476.15	108.89	Final Hydro-static

Recovery

Length (ft)	Description	Volume (bbl)
420.00	water	5.89
0.00	Chlorides 170,000	0.00

Gas Rates

Choke (inches)	Pressure (psia)	Gas Rate (Mcf/d)

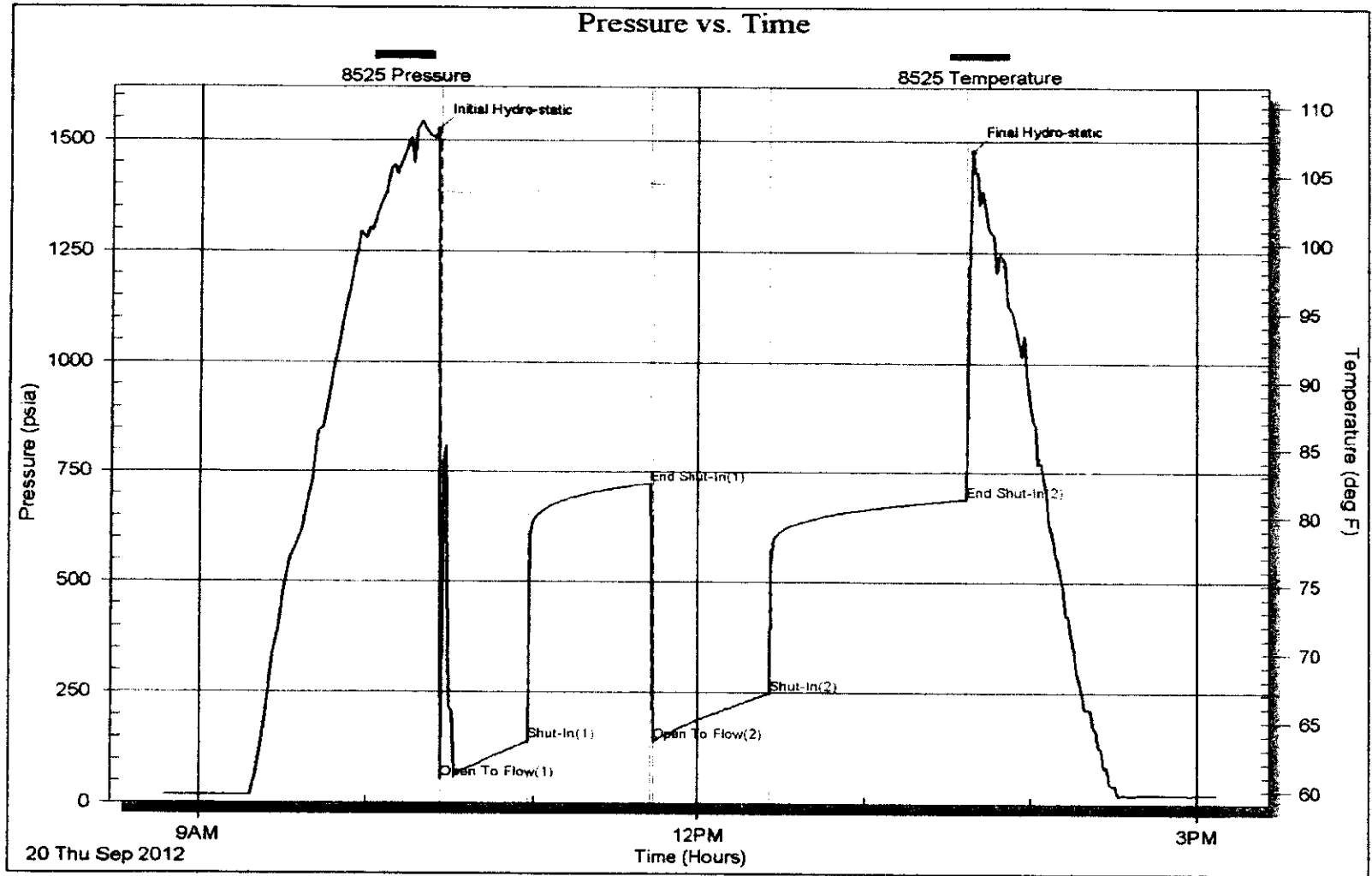
Serial #: 8525

Carrie Exploration & Development

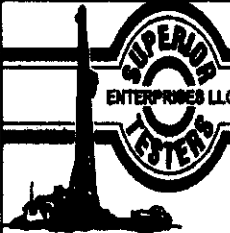
Seiler c-2

DST Test Number: 1

DST # 1 EXPANDED CHART



DST # 2 TEST SUMMARY

	DRILL STEM TEST REPORT	
	Carrie Exploration & Development	35-19-11 Barton
	210 W 22nd Hays KS 67601	Selker c-2
ATTN Herb Deines	Job Ticket: 17812	DST#: 2
	Test Start: 2012.09.21 @ 11:54:00	

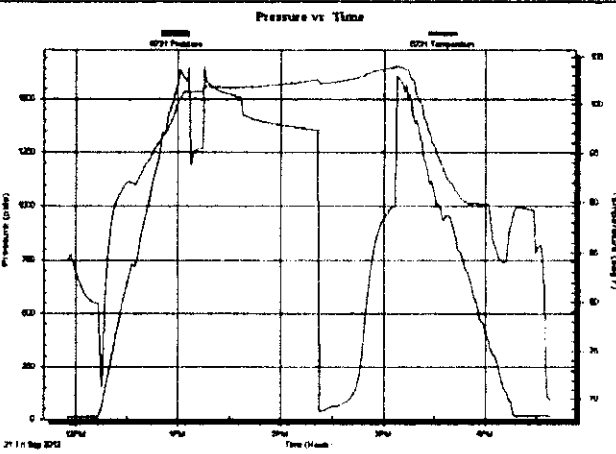
GENERAL INFORMATION:

Formation: Arbuckle	Test Type: Conventional Bottom Hole (Initial)
Deviated: No Whipstock: ft (KB)	Tester: Jared Scheck
Time Tool Opened: 13:06:30	Unit No: 3320-Great Bend-30
Time Test Ended: 16:37:30	Reference Elevations: 1781.00 ft (KB)
Interval: 3284.00 ft (KB) To 3308.00 ft (KB) (TVD)	1769.00 ft (CF)
Total Depth: 3308.00 ft (KB) (TVD)	KB to GR/CF: 12.00 ft
Hole Diameter: 7.88 inches Hole Condition: Fair	

Serial #: 8525

Press@RunDepth: psia @ ft (KB)	Capacity: 5000.00 psia
Start Date: 2012.09.21	End Date: 2012.09.21
Start Time: 11:54:00	End Time: 16:37:30
	Last Calib.: 2012.09.21
	Time On Btm
	Time Off Btm

TEST COMMENT: 1st Opening 30 Minutes-Very weak surface blow did not build
 1st Shut-in 45 Minutes-No blow back
 2nd Opening 15 Minutes-Very weak blow built 1 inch into water
 2nd Shut-in 30 Minutes-No blow back



PRESSURE SUMMARY

Time (Min.)	Pressure (psia)	Temp (deg F)	Annotation

Recovery

Length (ft)	Description	Volume (bbl)

Gas Rates

Choke (inches)	Pressure (psia)	Gas Rate (Mcf/d)

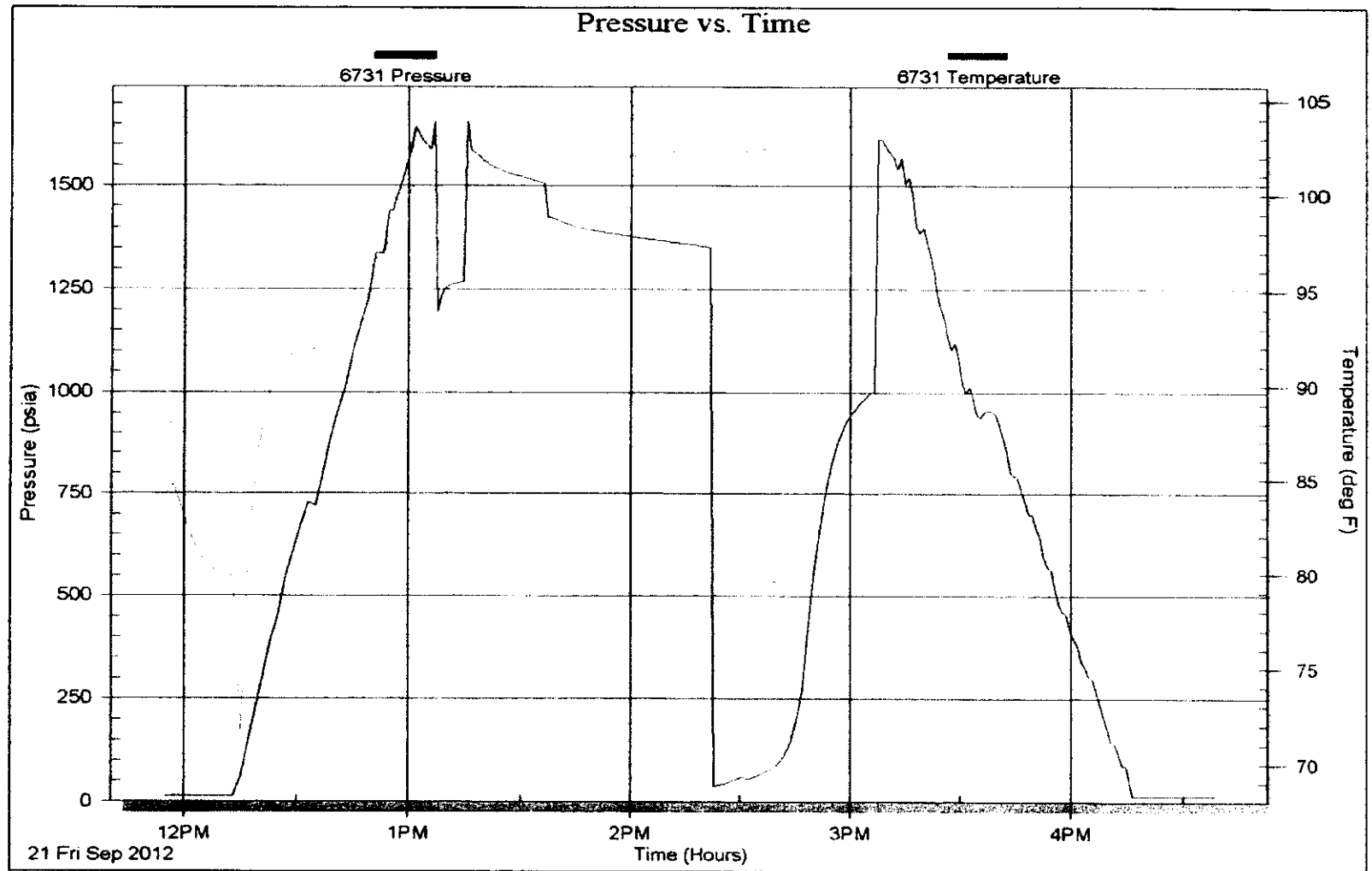
Serial #: 8525

Carrie Exploration & Development

Seiker c-2

DST Test Number: 2

DST# 2 EXPANDED CHART



ROCK TYPES

- | | | | |
|---------|------------|------------|---------|
| Clystgy | Lmst fw<7 | shale, gry | Ss |
| Congl | Lmst fw>7 | Carbon Sh | Lscongl |
| Dolprim | shale, grn | shale, red | |

ACCESSORIES

MINERAL

- ▲ Chert, dark
- P Pyrite
- △ Chert White

FOSSIL

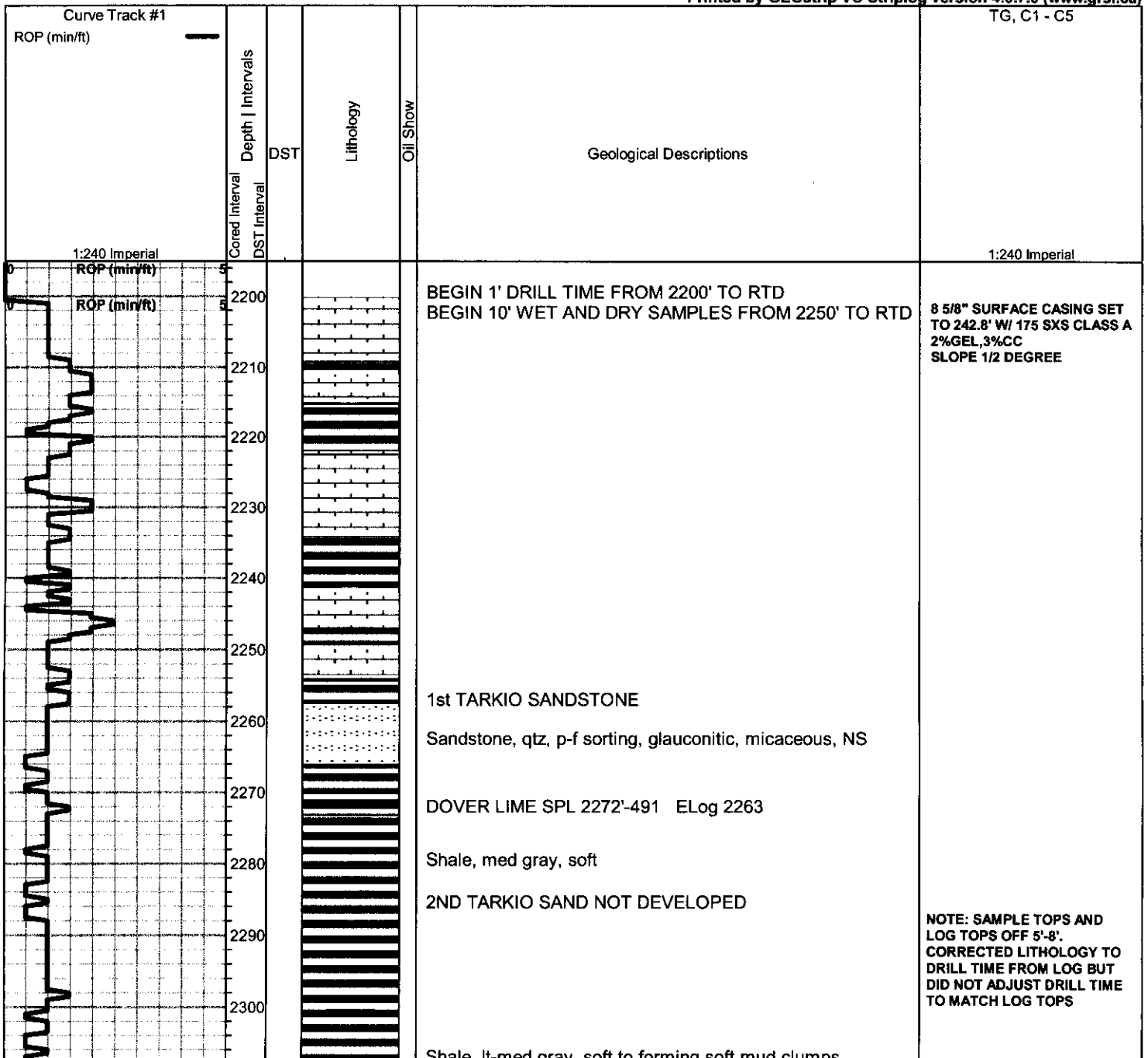
- ◊ Oolite
- ◊ Oomoldic

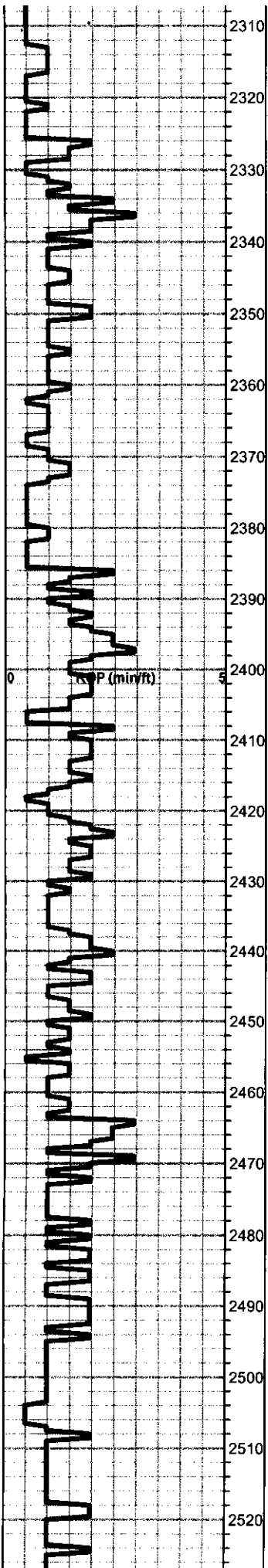
OTHER SYMBOLS

DST

- DST Int
- DST alt
- Core

Printed by GEOstrip VC Striplog version 4.0.7.0 (www.grsi.ca)





Shale, lt-med gray, soft to forming soft mud clumps

TARKIO (STOTLER) LIME SPL 2324-543 ELOG 2317

Lime, crm-tan, fnxln, chalk in part

Lime, crm-tan, fnxln, fossil fragments

3RD TARKIO SAND

Sandstone, VF grain, poorly sorted, gritty, glauconitic, mica flakes, NS

Shale, lt gray, soft blocky to forming soft mud clumps

Lime, tan-brn, fnxln, fossiliferous in brn lime, chalk in part

Lime, med-dark brn, fossiliferous

Lime, crm-tan, fnxln

Lime, med brn, fnxln

Lime, tan-brn-grayish brn, fnxln, slightly fossiliferous

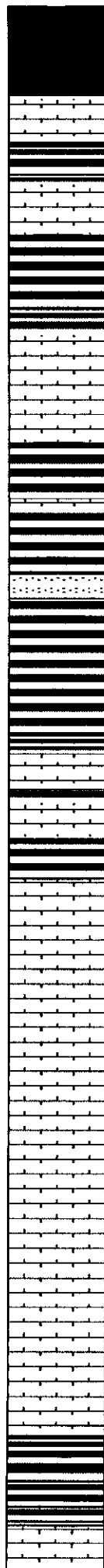
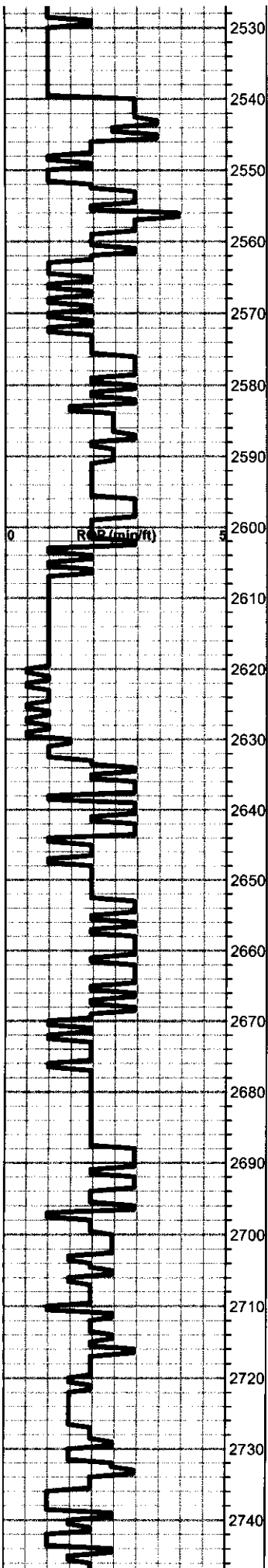
Lime, med brn, fn-vfxln, slightly fossiliferous

Lime, lt-med brn, fnxln, microfossiliferous

Lime, lt-med brn, fn-vfxln, slightly fossiliferous

Lime, grayish brn-med brn, fn-vfxln, fusulinids

Shale, lt gray, soft to forming soft mud



Lime, lt-dark brn-grayish brn, fnxln, fusulinids

Lime, lt-dark brn, fnxln, fossils in dark brn lime.

Lime, tan-grayish brn, fnxln, slightly fossiliferous

Lime, tan-med brn, fnxln, slightly fossiliferous

Lime, lt-med brn, fnxln, fossiliferous-fusulinids

Sandstone, qtz, poorly sorted, glauconitic, mica flakes, NS

Shale, lt-med gray, soft blocky

TOPEKA SPL 2630-849 ELOG 2625

Lime, tan-gray, fnxln, slightly fossiliferous, shaley in part

Lime, lt-med brn, fnxln, slightly fossiliferous

Lime, crm-tan, fnxln, slightly fossiliferous, slight bed chalk

Lime, brnsh gray, fnxln, fossiliferous

Lime, crm-tan-lt brn, fnxln-granular in part, bed chalk NS

Lime, crm-tan-med brn, fnxln, bed chalk in part

Lime, lt-med brn, fnxln, slightly fossiliferous

Lime, lt-med brn-grayish brn, fnxln, slightly fossiliferous

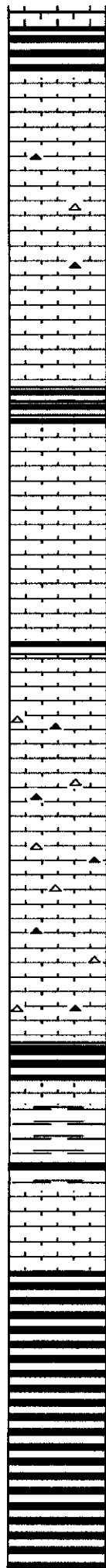
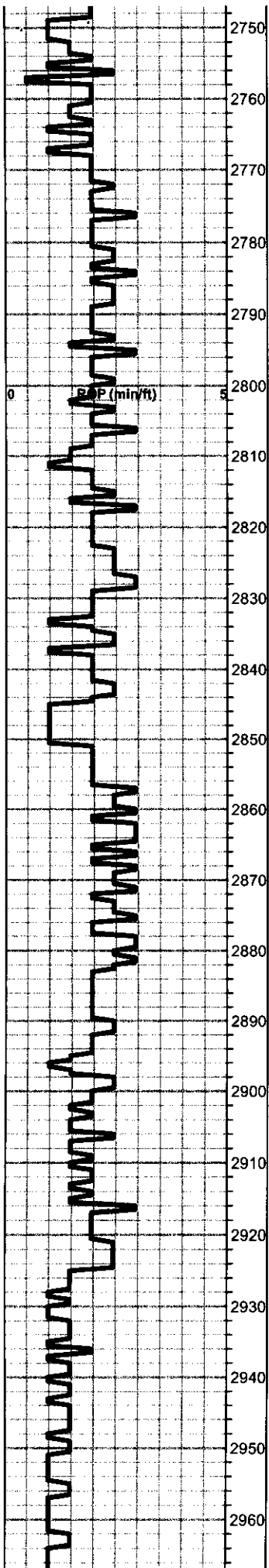
Lime, lt-med brn-grayish brn, fnxln, slightly fossiliferous

Lime, crm-lt brn, fnxln, slightly fossiliferous

Lime, lt-med brn, fnxln, slightly fossiliferous, fusulinids
Shale, black carbonaceous

Lime, med brn-grayish brn, fnxln

Lime, offwhite-lt brn, fnxln, slightly fossiliferous



Lime, crm-lt brn, fnxln-granular in part

Lime, lt brn-lt grayish brn, fnxln, slightly fossiliferous, slight bed chalk

Lime, crm-lt brn, fnxln, white and brn chert

Lime, lt-dark brn, fnxln, slightly fossiliferous

Lime, med brn, fnxln

Shale, black carbonaceous

Lime, tan-lt brn, fnxln-granular,

Lime, tan-lt brn, fnxln-granular with fine oolitic material with lt show of free oil, no odor, light scattered staining.

SHOW LAGS BACK TO LOG INTERVAL 2810-15

Lime, crm-lt brn, fnxln-granular

Lime, tan-lt brn, fnxln, slightly fossiliferous in part

Lime, crm-lt brn, fn-vfxln, bed chalk in part

Lime, lt-med brn, fnxln, slightly fossiliferous

Lime, lt-med brn, fnxln, bed chalk in part, slight fossils content.

Lime, med brn-grayish brn, fnxln, slightly fossilifeorus

HEEBNER SHALE SPL 2894-1113 ELog 2886

Shale, black carbonaceous, fissile, blocky
Lime, med brn, fnxln, fossiliferous

Shale, dove gray-lime green, soft mud

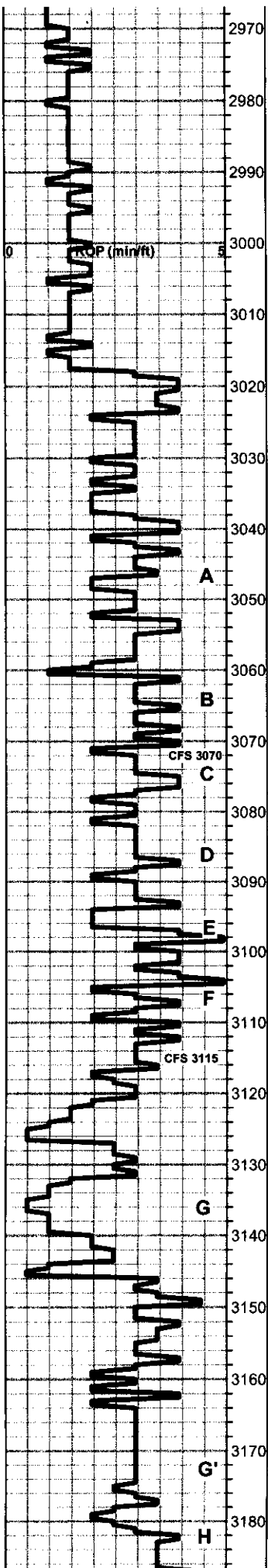
TORONTO SPL 2913-1132 ELog 2903

Lime, crm-tan, fnxln, slight chalk in part, NS

DOUGLAS SHALE SPL 2925-1144 ELog 2918

Shale, lt-med gray, firm, blocky

Shale, lt-med gray, soft blocky



Very little sand noted in samples. Few clusters found were fine grained, poorly sorted, gritty chips with saturated staining.

BROWN LIME SPL 3017-1236 ELog 3012

Lime, lt-med brn, fnxln, fossiliferous

Shale, lt-med gray, soft, pyritic

LKC SPL 3038-1257 ELog 3030

Lime, lt brn, fnxln

Lime, lt brn, fnxln with scattered oolitic material, NS

Lime, crm-tan-grayish brn, fnxln

Lime, crm-tan, fnxln, hard on crush

Lime, med brn, fnxln, fossiliferous

Lime, med brn, fnxln

Lime, med brn, fnxln

Lime, med-dark brn, fnxln

Lime, med brn, fnxln

Lime, lt-med brn, fnxln

Lime, lt-med brn, oolitic/oolmoldic, scattered lt stain, no odor, lot of barren material.

Lime, lt-med brn, oolitic/oolmoldic, mostly barren, slight chalk

Lime, lt-med brn, fnxln

Lime, lt-dark brn, fn-vfxln, slight bed chalk, slightly fossiliferous

Shale, gray-black carbonaceous

Lime, lt-med brn, fnxln

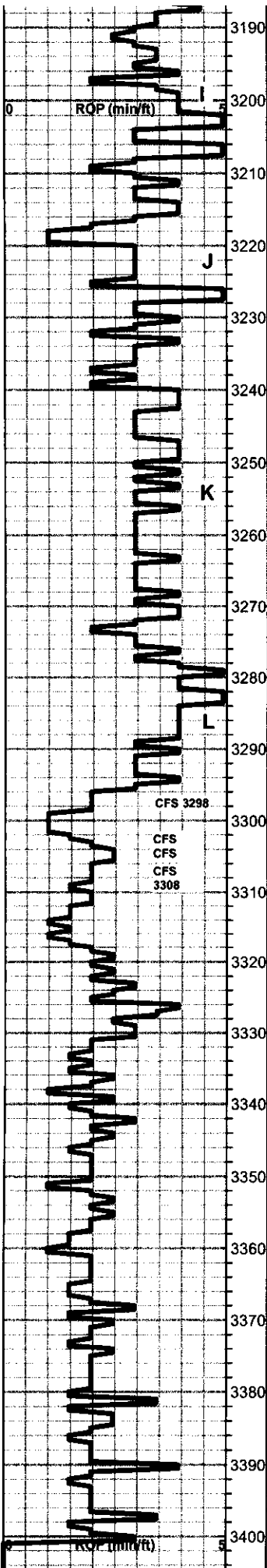
Lime, med brn-dark brn, fnxln, bed chalk, 1 chip with oil stain, no odor, NFO

SHORT TRIP @ 3023'
PULLED 25 STANDS

DST # 1 3090' TO 3115' SEE
HEADER FOR TEST SUMMARY

THE SHOW LAGS BACK TO
THE LOG INTERVAL 3117-21

SHOW LAGS TO LOG
INTERVAL 3171'-3174'



Lime, crm-tan, fnxln, chalk w/ few chips of oolitic lime with trace of oil stain in interoolitic porosity, no odor, NFO

Lime, lt-med brn, fn-vfxln, slightly fossiliferous

Lime, lt-med brn, fnxln, bed chalk in part, NS

Lime, crm-tan, fnxln, bed chalk, NS

Shale, gray-black, blocky with slivers

Lime, crm-tan, fnxln, bed chalk

Lime, lt-med brn, fn-vfxln, bed chalk, slightly fossiliferous

Lime, lt brn-lt grayish brn, fn-vfxln, slight chalk in part

Shale, gray to black

Lime, med brn, fn-vfxln

BKC SPL 3288-1507 ELog 3282

Shale, reddish brn, soft grading into lt gray soft shale

Shale, reddish brn, chert nodules grading into lime mix

ARBUCKLE SPL 3304-1523 ELog 3300

Dolomite, wht-lt brn, fm-cxln, intercrystalline porosity, good odor with SFO on break, saturated staining.

Dolomite, crm-lt brn, med-cxln, good odor, saturated stain

Dolomite, med brn, fn-cxln, fair odor, scattered to saturated staining

Dolomite, lt brn, fn-cxln, decreasing odor and staining

Dolomite, crm-lt brn, fnxln, increasing white chert content

Dolomite, crm, fn-cxln

Dolomite, crm, fn-cxln

Dolomite, crm, fn-cxln

Dolomite, crm, fn-cxln

Dolomite, crm, fn-cxln

Dolomite, crm, fn-cxln

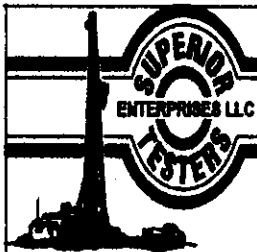
SHOW LAGS TO LOG INTERVAL 3187'-3192'

DST # 2 3284' TO 3308' SEE HEADER FOR TEST SUMMARY
TOOL PLUGGED THROUGH MOST OF TEST

LOG INTERVAL 3306-14 APPEARS WET WHICH MATCHES HISTORIC PRODUCTIVE ZONE. ZONES TO PERFORATE AND TEST ARE IN LOG INTERVAL FROM 3295-3305 AND 3314-26. MAY WANT TO CONSIDER PERFORATING LOG INTERVAL FROM 3307-11 AND TESTING. IF ALL WATER, SQUEEZE ZONE WITH CEMENT BEFORE TESTING OTHER ZONES IN ARBUCKLE

5 1/2" PRODUCTION CASING SET TO 3396' W/ 145 SXS EA2. PORT COLLAR @ 1551', SWIFT TICKET # 21897

SLOPE @3400' 1 DEGREE



DRILL STEM TEST REPORT

Carrie Exploration & Development

35-19-11 Barton

210 W 22nd Hays KS 67601

Selker c-2

Job Ticket: 17811

DST#: 1

ATTN: Herb Deines

Test Start: 2012.09.20 @ 08:47:00

GENERAL INFORMATION:

Formation: **Lansing " F "**

Deviated: No Whipstock: ft (KB)

Time Tool Opened: 10:26:30

Time Test Ended: 15:06:30

Test Type: Conventional Bottom Hole (Initial)

Tester: Jared Scheck

Unit No: 3320-Great Bend-

Interval: 3090.00 ft (KB) To 3115.00 ft (KB) (TVD)

Total Depth: 3115.00 ft (KB) (TVD)

Hole Diameter: 7.88 inches Hole Condition: Poor

Reference Elevations: 1781.00 ft (KB)

1769.00 ft (CF)

KB to GR/CF: 12.00 ft

Serial #: 8525

Press@RunDepth: 248.37 psia @ ft (KB)

Capacity: 5000.00 psia

Start Date: 2012.09.20

End Date: 2012.09.20

Last Calib.: 2012.09.20

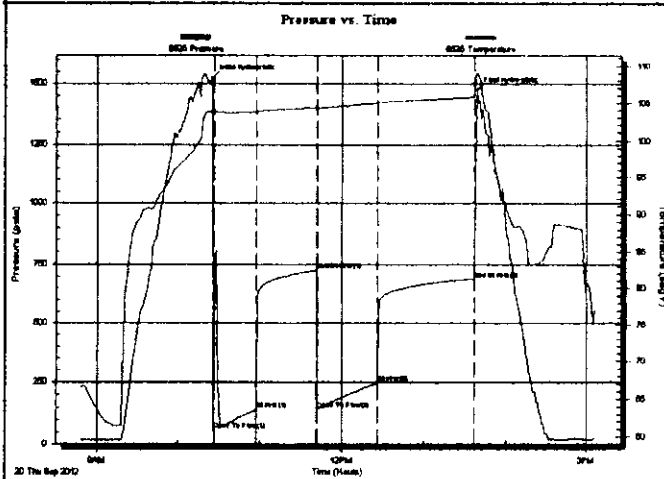
Start Time: 08:47:00

End Time: 15:06:30

Time On Btm: 2012.09.20 @ 10:25:30

Time Off Btm: 2012.09.20 @ 13:39:00

TEST COMMENT: 1st Opening 30 Minutes-Fair blow built bottom of bucket in 15 minutes
 1st Shut-in 45 Minutes-No blow back
 2nd Opening 45 Minutes-Fair blow built bottom of bucket in 15 minutes
 2nd Shut-in 60 Minutes-No blow back



PRESSURE SUMMARY

Time (Min.)	Pressure (psia)	Temp (deg F)	Annotation
0	1522.80	103.76	Initial Hydro-static
1	54.87	103.68	Open To Flow (1)
32	140.11	103.80	Shut-In(1)
76	723.84	104.45	End Shut-In(1)
77	140.39	104.39	Open To Flow (2)
121	248.37	104.99	Shut-In(2)
191	688.36	105.83	End Shut-In(2)
194	1476.15	108.89	Final Hydro-static

Recovery

Length (ft)	Description	Volume (bbl)
420.00	water	5.89
0.00	Chlorides 170,000	0.00

Gas Rates

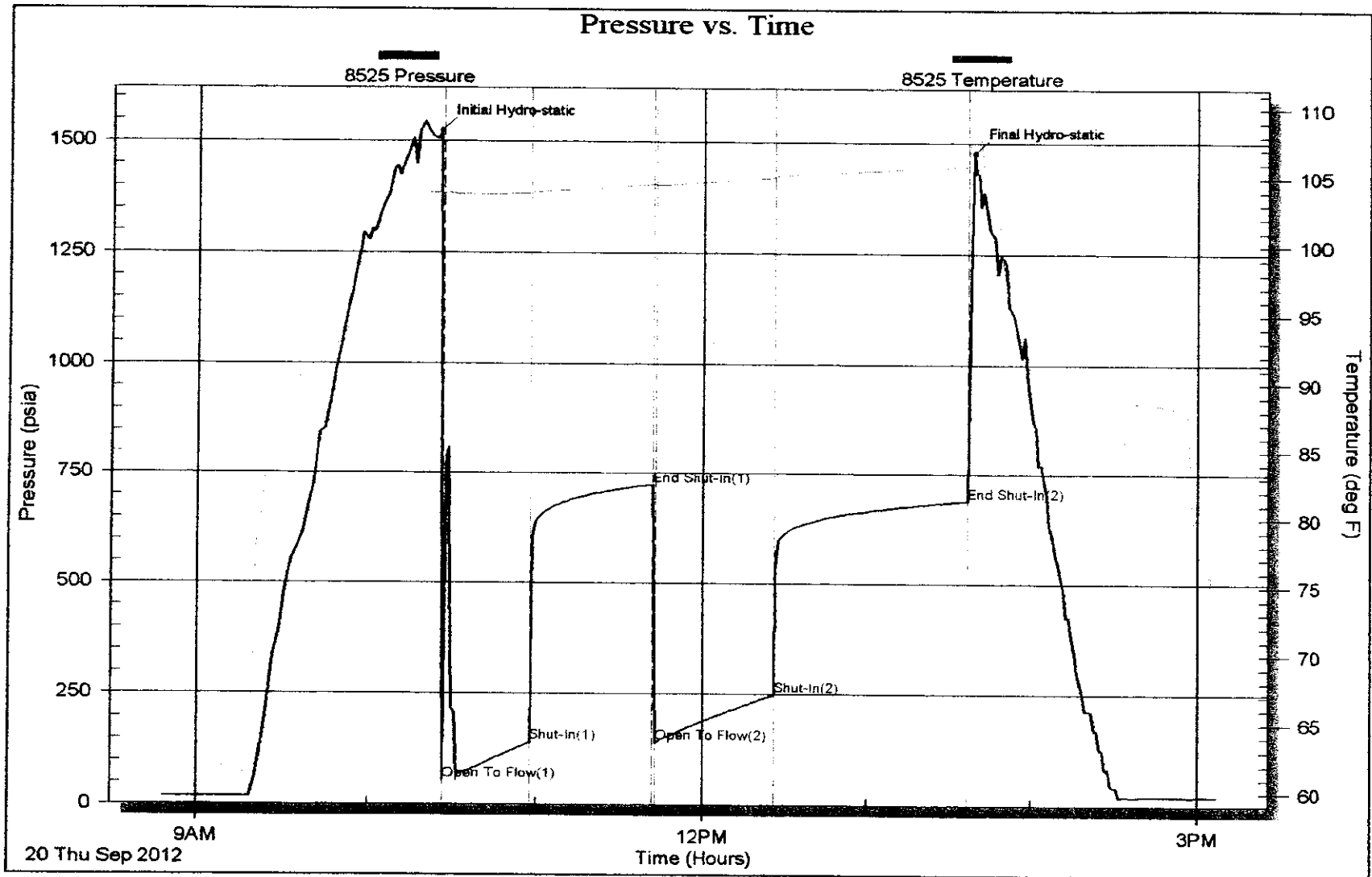
	Choke (inches)	Pressure (psia)	Gas Rate (Mcf/d)

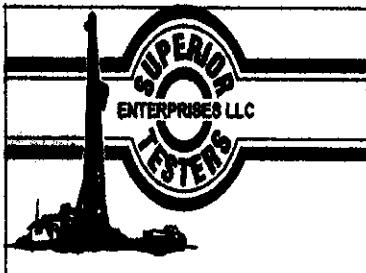
Serial #: 8525

Carrie Exploration & Development

Seiker c-2

DST Test Number: 1





DRILL STEM TEST REPORT

Carrie Exploration & Development

35-19-11 Barton

210 W 22nd Hays KS 67601

Seiker c-2

Job Ticket: 17812

DST#: 2

ATTN: Herb Deines

Test Start: 2012.09.21 @ 11:54:00

GENERAL INFORMATION:

Formation: **Arbuckle**

Deviated: No Whipstock: ft (KB)

Time Tool Opened: 13:08:30

Time Test Ended: 16:37:30

Test Type: Conventional Bottom Hole (Initial)

Tester: Jared Scheck

Unit No: 3320-Great Bend-30

Interval: **3284.00 ft (KB) To 3308.00 ft (KB) (TVD)**

Total Depth: 3308.00 ft (KB) (TVD)

Hole Diameter: 7.88 inches Hole Condition: Fair

Reference Elevations: 1781.00 ft (KB)

1769.00 ft (CF)

KB to GR/CF: 12.00 ft

Serial #: 8525

Press@RunDepth: psia @ ft (KB)

Start Date: 2012.09.21 End Date: 2012.09.21

Start Time: 11:54:00 End Time: 16:37:30

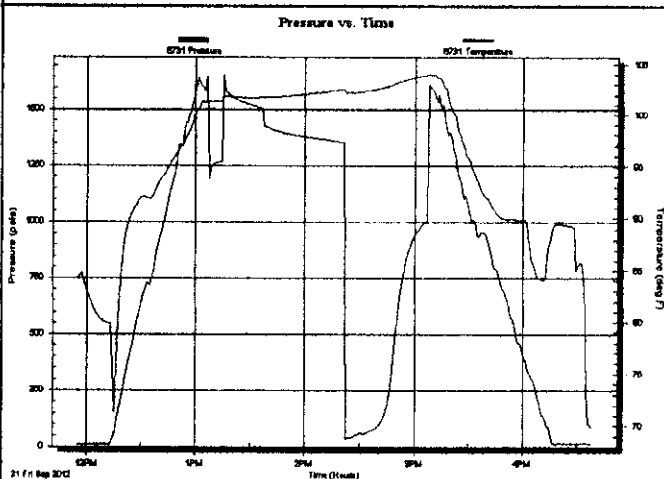
Capacity: 5000.00 psia

Last Calib.: 2012.09.21

Time On Btm:

Time Off Btm:

TEST COMMENT: 1st Opening 30 Minutes-Very weak surface blow did not build
 1st Shut-in 45 Minutes-No blow back
 2nd Opening 15 Minutes-Very weak blow built 1 inch into water
 2nd Shut-in 30 Minutes-No blow back



PRESSURE SUMMARY

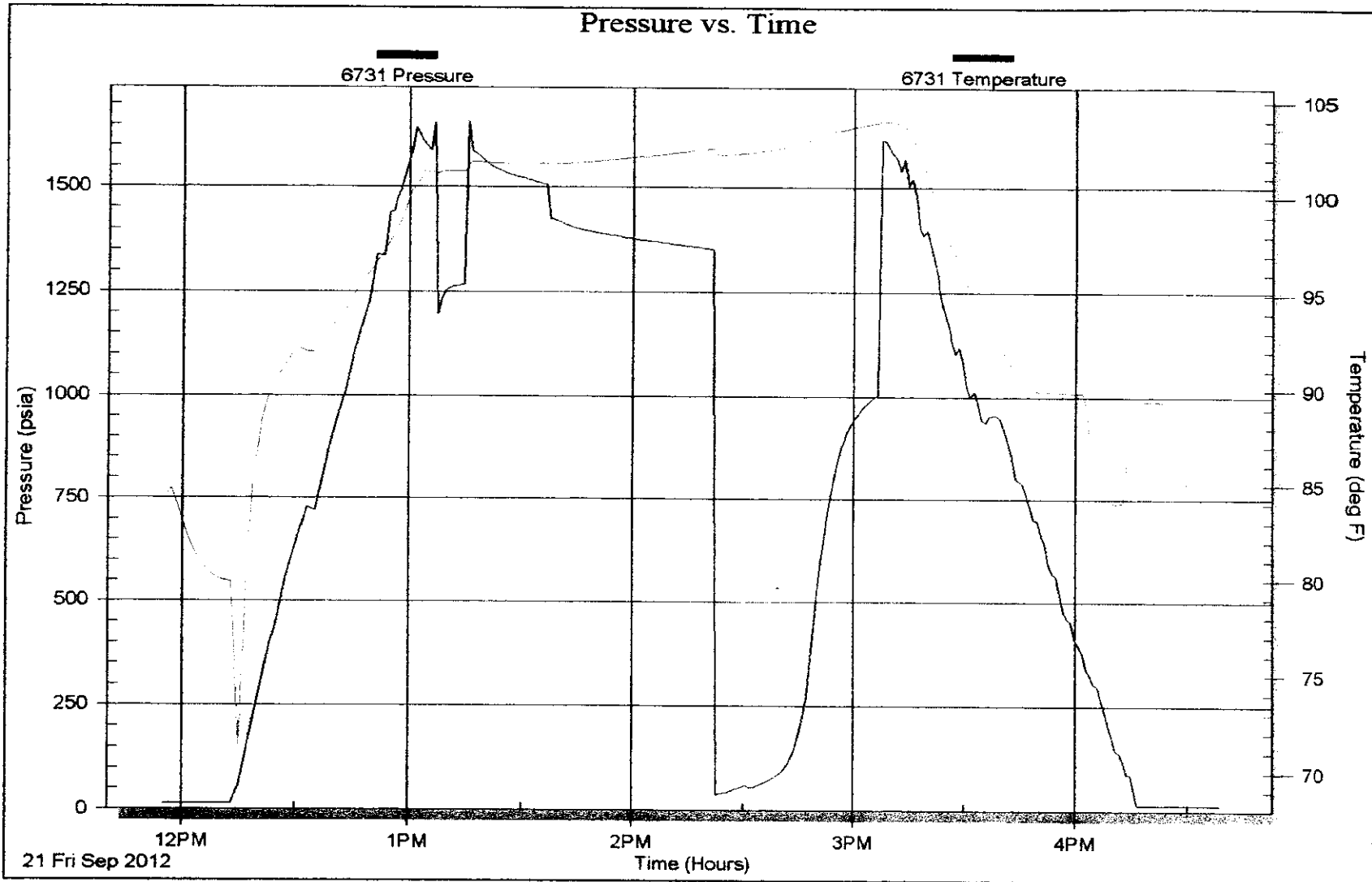
Time (Min.)	Pressure (psia)	Temp (deg F)	Annotation

Recovery

Length (ft)	Description	Volume (bbl)

Gas Rates

Choke (inches)	Pressure (psia)	Gas Rate (Mcf/d)



ALLIED OIL & GAS SERVICES, LLC 053734

REMIT TO P.O. BOX 31
RUSSELL, KANSAS 67665

SERVICE POINT:
Geat Bend

DATE <u>9-15-12</u>	SEC. <u>35</u>	TWP. <u>19</u>	RANGE <u>11</u>	CALLED OUT	ON LOCATION	JOB START <u>8:30 PM</u>	JOB FINISH <u>9:00 PM</u>
LEASE <u>Slicker</u>		WELL# <u>C2</u>		LOCATION <u>Ellenwood 3 East 1/2 RD</u>		COUNTY <u>Barton</u>	STATE <u>KS</u>
OLD OR <u>(NEW)</u> (Circle one)				<u>3/4 North East into</u>			

2-01
0186

CONTRACTOR Southwind Rig 70 OWNER Cavvie Exploration

TYPE OF JOB Surface

HOLE SIZE 12 1/4 I.D. 260

CASING SIZE 8 3/8 24" DEPTH 254

TUBING SIZE DEPTH

DRILL PIPE DEPTH

TOOL DEPTH

PRES. MAX MINIMUM

MEAS. LINE SHOE JOINT

CEMENT LEFT IN CSG.

PERFS.

DISPLACEMENT 15.25 BBHs

EQUIPMENT

PUMP TRUCK CEMENTER Wayne Davis

224 HELPER Sow Campbell

BULK TRUCK

344/170 DRIVER Alan Generoux

BULK TRUCK

DRIVER

CEMENT

AMOUNT ORDERED 175 SX Class A + 3% Gel

+ 2% Gel

COMMON 175 @ 17.90 3,132.⁵⁰

POZMIX @

GEL 3 @ 23.40 70.20

CHLORIDE 6 @ 64.00 384.00

ASC @

@

@

@

@

@

@

@

HANDLING 188.74 @ 2.48 468.07

MILEAGE 8.6 X 124 2.60 268.32

TOTAL 4,323.⁰⁹

REMARKS:

Pipe on Bottom B-cul circulation
with Rig mud
Run 3 BBHs water Ahead
Mix 175 SX class A + 3% + 2% Gel
Displace 15.25 BBHs fresh water
Shut in cement & did
circulate

SERVICE

DEPTH OF JOB 256

PUMP TRUCK CHARGE 1512.²⁵

EXTRA FOOTAGE @

MILEAGE Hum 12 @ 7.70 92.40

MANIFOLD @

Lum 12 @ 4.40 52.80

@

TOTAL 1,657.⁴⁵

CHARGE TO: Cavvie Exploration

STREET _____

CITY _____ STATE _____ ZIP _____

PLUG & FLOAT EQUIPMENT

_____ @ _____

_____ @ _____

_____ @ _____

_____ @ _____

_____ @ _____

TOTAL _____

SALES TAX (If Any) 241.83

TOTAL CHARGES 5,980.⁵²

DISCOUNT 26% 1,554.⁹²

IF PAID IN 30 DAYS

4,425.⁶⁰

To: Allied Oil & Gas Services, LLC.
You are hereby requested to rent cementing equipment and furnish cementer and helper(s) to assist owner or contractor to do work as is listed. The above work was done to satisfaction and supervision of owner agent or contractor. I have read and understand the "GENERAL TERMS AND CONDITIONS" listed on the reverse side.

PRINTED NAME Frank Rome

SIGNATURE Frank Rome



CHARGE TO: *Carrie Exploration*

ADDRESS:

CITY, STATE, ZIP CODE:

TICKET
N^o 21897

PAGE 1 OF 2

SERVICE LOCATIONS 1. <i>Hays, KS</i>	WELL/PROJECT NO. <i>C#2</i>	LEASE <i>Slicker</i>	COUNTY/PARISH <i>Bar-ton</i>	STATE <i>KS</i>	CITY	DATE <i>9-22-12</i>	OWNER <i>Sq. mt</i>
2. <i>Ness City, KS</i>	TICKET TYPE <input checked="" type="checkbox"/> SERVICE <input type="checkbox"/> SALES	CONTRACTOR <i>southwind Drilling #7</i>	RIG NAME/NO.	SHIPPED VIA <i>CT</i>	DELIVERED TO <i>location</i>	ORDER NO.	
3.	WELL TYPE <i>oil</i>	WELL CATEGORY <i>development</i>	JOB PURPOSE <i>longstring</i>	WELL PERMIT NO.	WELL LOCATION		
4.	REFERRAL LOCATION	INVOICE INSTRUCTIONS					

PRICE REFERENCE	SECONDARY REFERENCE/ PART NUMBER	ACCOUNTING			DESCRIPTION	QTY.		U/M		UNIT PRICE	AMOUNT
		LOC	ACCT	DF							
575		1			MILEAGE #111	70	mi			6.00	420.00
578		1			Pump Charge (longstring)	1	ea	3389	'	1500.00	1500.00
221		1			KCL	5	gal			25.00	125.00
280		1			Floccok-21	330	gal			2.50	825.00
290		1			D-A-	2	gal			35.00	70.00
402		1			Centralizers	8	ea	5 1/2"		70.00	560.00
403		1			Baskets	2	ea			250.00	500.00
404		1			Port Collar	1	ea			2400.00	2400.00
406		1			LD Plug & Baffle	1	ea			250.00	250.00
407		1			Insert Float Shoe/Fill	1	ea			350.00	350.00
419		1			Rotating Head	1	ea			200.00	200.00

LEGAL TERMS: Customer hereby acknowledges and agrees to the terms and conditions on the reverse side hereof which include, but are not limited to, **PAYMENT, RELEASE, INDEMNITY, and LIMITED WARRANTY** provisions.

MUST BE SIGNED BY CUSTOMER OR CUSTOMER'S AGENT PRIOR TO START OF WORK OR DELIVERY OF GOODS

DATE SIGNED *9-22-12* TIME SIGNED *2:20* A.M. P.M.

REMIT PAYMENT TO:

SWIFT SERVICES, INC.
P.O. BOX 466
NESS CITY, KS 67560
785-798-2300

SURVEY	AGREE	UN-DECIDED	DIS-AGREE	PAGE TOTAL	
OUR EQUIPMENT PERFORMED WITHOUT BREAKDOWN?				1	7200.00
WE UNDERSTOOD AND MET YOUR NEEDS?				2	4500.00
OUR SERVICE WAS PERFORMED WITHOUT DELAY?					7.50
WE OPERATED THE EQUIPMENT AND PERFORMED JOB CALCULATIONS SATISFACTORILY?					11800.50
ARE YOU SATISFIED WITH OUR SERVICE?	<input type="checkbox"/> YES	<input type="checkbox"/> NO			Bar-ton TAX 70.3%
<input type="checkbox"/> CUSTOMER DID NOT WISH TO RESPOND				TOTAL	12,342.35

CUSTOMER ACCEPTANCE OF MATERIALS AND SERVICES The customer hereby acknowledges receipt of the materials and services listed on this ticket.

SWIFT OPERATOR: *[Signature]* APPROVAL: *[Signature]*

Thank You!

JOB LOG

SWIFT Services, Inc.

DATE 9-22-12 PAGE NO. 2

CUSTOMER Carrie Explorations WELL NO. C#2 LEASE Sicker JOB TYPE Longstring TICKET NO. 21897

CHART NO.	TIME	RATE (BPM)	VOLUME (BBL) (GAL)	PUMPS		PRESSURE (PSI)		DESCRIPTION OF OPERATION AND MATERIALS
				T	C	TUBING	CASING	
	1230							cancel w/FE
								RTD 3349'
								5 1/2" x 14" x 3393' x 27'
								Cent. 1-7, 56
								Bush. 4, 57
								PC. 57 @
	1630							start FE
	1850							break circ.
	1925	2.5	7					Plug RTT 30's k5 EA-2
	1930	5	0				200	start KCL flush
		5	15/0				200	start Flochek
		5	8/0				200	start KCL flush
		5	5/0				200	start EA-2 Cement 1455 k5 EA-2
	1943		36					End Cement Wash P&L
								Drop L.D. Plug
	1946	6	0				200	start Displacement
	1956	5	62				250	Catch Cement
	2000		82				650 / 1500	Land Plug
								Release Pressure
								Float Held
								Thank you
								Nick, Don & Russ



PO Box 466
Ness City, KS 67560
Off: 785-798-2300

TICKET CONTINUATION

TICKET No. 21897

CUSTOMER *Currie Exploration* WEL# *C#2 Sicker* DATE *9-22-12* PAGE *2* OF *2*

PRICE REFERENCE	SECONDARY REFERENCE/ PART NUMBER	ACCOUNTING			TIME	DESCRIPTION	QTY.		UM		UNIT PRICE	AMOUNT								
		LOC	ACCT	DF																
325		2				Standard Cement	175	sk			13 ⁵⁰	2362 ⁵⁰								
276		2				Flocelle	50	#	1/4	#/sk	2 ⁰⁰	100 ⁰⁰								
283		2				Salt	850	#	10	%	2 ⁰⁰	170 ⁰⁰								
284		2				Calseal	8	sk	5	%	35 ⁰⁰	280 ⁰⁰								
286		2				Halad-1	80	#	1/2	%	7 ⁵⁰	600 ⁰⁰								
581		2				SERVICE CHARGE					2 ⁰⁰	356 ⁰⁰								
583		2				<table border="1" style="display: inline-table; vertical-align: middle;"> <tr> <td>TOTAL WEIGHT</td> <td>18230</td> </tr> <tr> <td>LOADED MILES</td> <td>70</td> </tr> </table>	TOTAL WEIGHT	18230	LOADED MILES	70				<table border="1" style="display: inline-table; vertical-align: middle;"> <tr> <td>CUBIC FEET</td> <td>175</td> </tr> <tr> <td>TON MILES</td> <td>638</td> </tr> </table>	CUBIC FEET	175	TON MILES	638	1 ⁰⁰	638 ⁰⁰
TOTAL WEIGHT	18230																			
LOADED MILES	70																			
CUBIC FEET	175																			
TON MILES	638																			
CONTINUATION TOTAL											4500 ⁰⁰									