

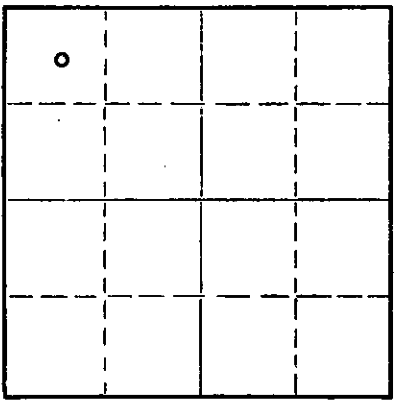
PL

STATE OF KANSAS
STATE CORPORATION COMMISSION

Give All Information Completely
Make Required Affidavit
Mail or Deliver Report to:
Conservation Division
State Corporation Commission
212 North Market, Insurance Bldg.
Wichita, Kansas

WELL PLUGGING RECORD

NORTH



Locate well correctly on above Section Plat

Ford County, Sec. 11 Twp. 27S Rge. - (E) 22 (W)
Location as "NE/CNW/SW" or footage from lines. G-NW/4-NW/4
Lease Owner The Pure Oil Company
Lease Name Dean, Nettie Well No. 1
Office Address P.O. Box #271, Tulsa 2, Oklahoma
Character of Well (completed as Oil, Gas or Dry Hole) S I gas well
Date well completed January 15 19 58
Application for plugging filed November 30 19 59
Application for plugging approved December 1 19 59
Plugging commenced January 8 19 60
Plugging completed February 2 19 60
Reason for abandonment of well or producing formation Non-commercial

If a producing well is abandoned, date of last production Never produced 19
Was permission obtained from the Conservation Division or its agents before plugging was commenced? Yes

Name of Conservation Agent who supervised plugging of this well Mr. Frank Broadfoot
Producing formation Miss. Lime Depth to top 4956 Bottom 5033 Total Depth of Well 5033 Feet
Show depth and thickness of all water, oil and gas formations. (PB to 5024')

OIL, GAS OR WATER RECORDS

CASING RECORD

FORMATION	CONTENT	FROM	TO	SIZE	PUT IN	PULLED OUT
Lansing-Kansas City	Water	4280	4730	8-5/8"	513'	None
Marmaton	Water	4730	4956	5-1/2"	5032'	2667'
Mississippian	Some Gas	4956	5033			

Describe in detail the manner in which the well was plugged, indicating where the mud fluid was placed and the method or methods used in introducing it into the hole. If cement or other plugs were used, state the character of same and depth placed, from _____ feet to _____ feet for each plug set.

Spotted 5 sacks cement in 5-1/2" OD casing 5015'-4950'. Shot 5-1/2" casing @ 3921, 3708, 3515, 3200, 2982, 2723 and off @ 2657'. Recovered 81 joints of 5-1/2" OD casing. Filled with crushed rock 450-440'. Ran 20 sacks cement 440-380'. Mudded hole 380-40'. Filled with crushed rock 40'-30' and spotted 10 sacks cement 30' to top of 8-5/8" casing. Screwed steel cap on top 8-5/8" surface casing.

RECEIVED
STATE CORPORATION COMMISSION
FEB 10 1960
CONSERVATION DIVISION
Wichita, Kansas

(If additional description is necessary, use BACK of this sheet)
Name of Plugging Contractor James O. Forbes Casing Pulling Co.
Address P. O. Box #221, Great Bend, Kansas

STATE OF Oklahoma, COUNTY OF Tulsa, ss.
Leo K. Hughes (employee of owner) or (owner or operator) of the above-described well, being first duly sworn on oath, says: That I have knowledge of the facts, statements, and matters herein contained and the log of the above-described well as filed and that the same are true and correct. So help me God.

(Signature) Leo K. Hughes
P. O. Box #271, Tulsa 2, Oklahoma
(Address)

Chief Div.
Prod. Clerk

SUBSCRIBED AND SWORN TO before me this 8th day of February, 1960

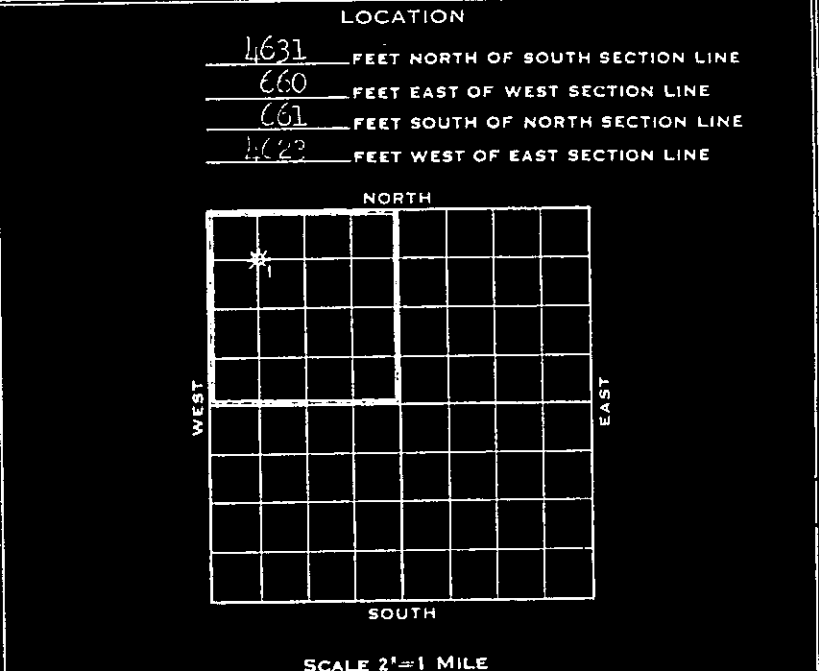
My commission expires September 9, 1962

W. A. Brown
Notary Public.

WELL LOG AND RELATED DATA

DIVISION S. W. Producing DISTRICT Buffalo (Konda Area) LEASE Dean, Nettie
 ACRES 160 LEASE NO. 13992 AFE NO. 2489 ELEVATION Grd. 2400', D.F. 2409' WELL NO. 1
 KEY-SEC. 11 TWP. 27S RGE. 22W PRCT.-DIST.-TWP. -
 SURVEY (S. Spearville Prospect) COUNTY Rand STATE Kansas

LOG			
FROM	TO	TOTAL	FORMATION
(Sample data start at 725')			
0	43	43	Red Bed
43	266	223	Clay, shale
266	320	54	Shale, sand
320	520	200	Shale, shells
520	725	205	Shale, salt, red bed
725	1440	715	Shale, reddish-brown, slightly sandy anhydritic
1440	1470	30	Anhydrite, gray, vuggy, porous, dolomite
1470	1820	350	Shale, reddish brown, maroon, anhydritic
1820	2350	530	Shale, gray anhydritic, wf halite costs
2350	2600	250	Anhydrite, gray & white interbedded wf red & gray shale
2600	2750	150	Dolomite, gray-buff sucrosic wf gray shale
2750	2891	141	Lime, gray, granular, slightly dolomitic lime wf gray shale
2891	3240	349	Lime, gray to buff, dense, fossiliferous slightly cherty wf gray & red shale
3240	3453	213	Lime, gray, fossiliferous, dense, cherty wf gray shale
3453	3530	77	Shale, red & gray, silty
3530	3730	200	Lime, white dense, fine, fossiliferous wf gray & red shale, silty
3730	4225	495	Lime, gray, dense, fine crystalline, cherty wf gray shale
4225	4280	55	Shale, red & gray, sandy
4280	LANESING-KANSAS CITY (Elec. log top)		
4280	4300	20	Shale, reg. & gray, sandy
4300	4640	340	Lime, cream to gray, dense, fine crystalline wf gray shale
4640	4716	76	Lime, white to gray, fine-med. crystalline wf black carbonaceous shale
4716	4728	12	Lime, light tan, pseudoolitic, foss, medium-dense wf traces black carbonaceous shale
4728	4730	2	Lime, gray to buff, med.-crystalline, med. dense wf thin streaks gray shale



CASING AND CEMENTING RECORD

SIZE CASING	5-7/8"	5-1/2"
THREAD	8	8
WEIGHT	21#	11#
GRADE	J-55	J-55
CONDITION	G/A	G/A
SET AT	513'	5032'
SACKS CEMENT	350	150
SIZE OF HOLE	7-7/8"	7-7/8"

(Temp. survey indicated top cmt. behind 5 1/2" cas.)

LINER RECORD

SIZE	WT.	COND.	LENGTH	BLANK	PERF	SET AT
						1210'

GUN PERFORATING RECORD

DATE	CASING	FROM	TO	SIZE SHOTS	NO. SHOTS
1-10-58	5-1/2"	5009	5015	Jet	24

SHOT OR ACID RECORD

DATE	TOP	BOTTOM	SHOT-ACID	REMARKS
1-12-58	5009	5015	250 G. Acid	
1-12-58	5009	5015	(Petrojelfrac: 3000 G & 1250# Sand)	

DRILLING: COMMENCED 12-17-57 COMPLETED 1-5-58
 ELECTRICAL SURVEY BY Helix (Radiation Guard) 1-6-58(1)
 DRILLED WITH (Unit Drilling Co.) Rotary TOOLS
 DRILLED IN WITH (Unit Drilling Co.) Rotary TOOLS
 FIRST PROD.—NAT. DATE - HRS. - BBLs - OIL
(2) WATER - M CU. FT. GAS - LBS. ROCK PRESS
 FIRST PROD. AFTER ACID—DATE 1-28-58 HRS. 16 BBLs 0 OIL
0 WATER 221 M CU. FT. GAS - LBS. ROCK PRESS.
 GAS/OIL RATIO - POTENTIAL 221 M.C.F. gas BBLs.
 GRAVITY - TEMP. - GRADE -

(1) Lane-Wells (Gamma Ray) 1-10-58
 (2) 1st net prod. to stock 1/15/58. Originally produced oil, then went entirely to gas & was reported as January completion of a "Shut in gas well". On subsequent swab test well produced 8 bbls. oil & 16 bbls. water in 24 hrs. with gas volume of 312,000 CFD.

Division of Interests:
 The Pure Oil Co. (Oper.) 50%
 The Onio Oil Co. 50%

DATE ABANDONED—SOLD

FROM	TO	TOTAL	FORMATION	FROM	TO	TOTAL	FORMATION
4730	MARMATON		(Elec. Log Top)				
4730	4846	116	Lime, gray to buff, med. crystalline, med.-dense wf thin streaks gray shale				
4846	4898	52	Lime-tan, dense, fine crystalline, wf some milky chert, wf gray & black shale				
4898	4942	44	Lime, white to buff, vuggy, porous, stain wf gray & green shale, trace clear angular, loose, quartzitic sand				
4942	4952	10	Lime, white, hard, dense siliceous wf white chert				
4952	4956	4	Lime, white, chalky, soft wf white chert				
4956	MISSISSIPPIAN		(Elec. Log top)				
4956	5016	60	Lime, white, chalky, soft wf white chert				
5016	5033	17	Dolomite, tan, friable, fine-crystalline, porous, stain				
5033			TOTAL DEPTH				
<u>PLUGGED BACK:</u>							
5033	5024	9	Cmt. in 5½" casing				
5024			TOTAL DEPTH-PB				
<u>PAY ZONE:</u>							
5009	5015						