

KANSAS DRILLERS LOG

S. 34 T. 17S R. 28 ^{NE}/_W

API No. 15 — 101 — 20383-0000
 County Number

Loc. NE NW

County LANE

Operator
 VOYAGER PETROLEUMS INC

Address
 C/O GODSEY EARLOUGHER, 6600 S YALE, TULSA OK 74136

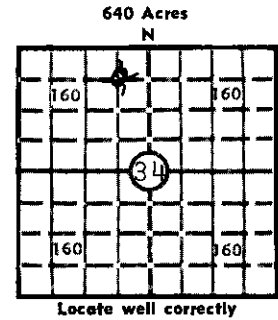
Well No. 1 Lease Name FOOS

Footage Location
660 feet from (N) ~~XX~~ line 1980 feet from (E) ~~XX~~ line

Principal Contractor C-G DRILLING CO., INC. Geologist JERRY SMITH

Spud Date 5/9/79 Total Depth 4670 P.B.T.D.

Date Completed 5/20/79 Oil Purchaser



Elev.: Gr. _____

DF _____ KB 2749'

CASING RECORD

Report of all strings set — surface, intermediate, production, etc.

Purpose of string	Size hole drilled	Size casing set (in O.D.)	Weight lbs/ft.	Setting depth	Type cement	Sacks	Type and percent additives
SURFACE	12 1/4"	8 5/8"	28#	332'	COMMON	225	3% CC

LINER RECORD

PERFORATION RECORD

Top, ft.	Bottom, ft.	Sacks cement	Shots per ft.	Size & type	Depth interval

TUBING RECORD

Size	Setting depth	Packer set at

ACID, FRACTURE, SHOT, CEMENT SQUEEZE RECORD

Amount and kind of material used	Depth interval treated

INITIAL PRODUCTION

Date of first production		Producing method (flowing, pumping, gas lift, etc.)			
RATE OF PRODUCTION PER 24 HOURS	Oil	Gas	Water	Gas-oil ratio	
	bbls.	MCF	bbls.	CFPB	
Disposition of gas (vented, used on lease or sold)			Producing interval (s)		

INSTRUCTIONS: As provided in KCC Rule 82-2-125, within 90 days after completion of a well, one completed copy of this Drillers Log shall be transmitted to the State Geological Survey of Kansas, 4150 Monroe Street, Wichita, Kansas 67209. Copies of this form are available from the Conservation Division, State Corporation Commission, 3830 So. Meridian (P.O. Box 17027), Wichita, Kansas 66217. Phone AC 316-522-2206. If confidential custody is desired, please note Rule 82-2-125. Drillers Logs will be on open file in the Oil and Gas Division, State Geological Survey of Kansas, Lawrence, Kansas 66044.

Operator VOYAGER PETROLEUMS INC DESIGNATE TYPE OF COMP.: OIL, GAS, DRY HOLE, SWDW, ETC.: DRY HOLE

Well No. 1 Lease Name FOOS

S 34 T 17SR 28 1/2 W

WELL LOG

Show all important zones of porosity and contents thereof; cored intervals, and all drill-stem tests, including depth interval tested, cushion used, time tool open, flowing and shut-in pressures, and recoveries.

SHOW GEOLOGICAL MARKERS, LOGS RUN, OR OTHER DESCRIPTIVE INFORMATION.

FORMATION DESCRIPTION, CONTENTS, ETC.	TOP	BOTTOM	NAME	DEPTH
ANHYDRITE	2145	+604		
BASE ANHYDRITE	2180	+569		
HEEBNER	3936	-1187		
LANSING	3975	-1226		
RTD	4670			
<p>DST #1: 4059-4095' FAIR BLOW 30-60-60-60. IBHP 42#, FBHP 114#, 20' HOCM, 180 MDY WTR. IFP 1202#, FFP 1192#.</p> <p>DST #2 STRADDLE TEST AFTER LOG 4210-4240' 30-30-30-30. RE C 40' MUD.WEAK BLOW</p>				

USE ADDITIONAL SHEETS, IF NECESSARY, TO COMPLETE WELL RECORD.

Date Received	<i>Debra L Heersche</i>
	Signature
	DEBRA L HEERSCHE, OFFICE MGR
	Title
	5/22/79
	Date