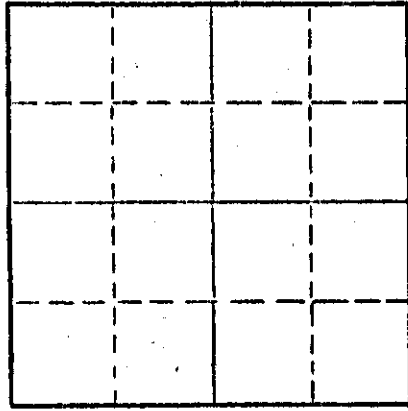


WELL PLUGGING RECORD

Give All Information Completely
Make Required Affidavit
Mail or Deliver Report to:
Conservation Division
State Corporation Commission
212 No. Market
Wichita, Kansas

NORTH



Locate well correctly on above
Section Plat

Harper County, Sec 7 Twp 31S Rge. - (E) 6 (W)
Location as "NE/CNW/SW" or footage from lines 150' E of C of NE-SW
Lease Owner Shenandoah Oil Corporation
Lease Name Clarence Barnholdt Well No. 1
Office Address 406 Mutual Savings Bldg., Fort Worth, Texas
Character of Well (completed as Oil, Gas or Dry Hole) Dry Hole
Date well completed _____ 19____
Application for plugging filed January 5, 1967
Application for plugging approved _____ 19____
Plugging commenced December 8, 1966
Plugging completed December 8, 1966
Reason for abandonment of well or producing formation Dry Hole

If a producing well is abandoned, date of last production - - - 19-
Was permission obtained from the Conservation Division or its agents before plugging was commenced? Yes

Name of Conservation Agent who supervised plugging of this well Archie Elving, Pratt, Kansas
Producing formation Dry Hole Depth to top - Bottom - Total Depth of Well 4772 Feet
Show depth and thickness of all water, oil and gas formations.

OIL, GAS OR WATER RECORDS

CASING RECORD

FORMATION	CONTENT	FROM	TO	SIZE	PUT IN	PULLED OUT
Simpson Sand	Salt Wtr.	4637'	4772'	8-5/8"	242'	None

Describe in detail the manner in which the well was plugged, indicating where the mud fluid was placed and the method or methods used in introducing it into the hole. If cement or other plugs were used, state the character of same and depth placed, from _____ feet to _____ feet for each plug set.
Heavy mud from total depth to 240 feet. Bridge with plug and 1/2 sack hulls and 25 sacks cement. Mud from 240 feet to 40 feet and plug with 1/2 sack hulls and 10 sacks cement to surface. 2 sacks cement in rat hole and mouse hole.

RECEIVED
STATE CORPORATION COMMISSION
FEB 1 1967
2-1-67
CONSERVATION DIVISION
Wichita, Kansas

(If additional description is necessary, use BACK of this sheet)

Name of Plugging Contractor Halliburton
Address Great Bend, Kansas

STATE OF Texas, COUNTY OF Tarrant, ss.
Harold E. Burke (employee of owner) or (owner or operator) of the above-described well, being first duly sworn on oath, says: That I have knowledge of the facts, statements, and matters herein contained and the log of the above-described well as filed and that the same are true and correct. So help me God.

(Signature) Harold E. Burke
Harold E. Burke
406 Mutual Savings Bldg. Ft. Worth,
(Address) Texas

Subscribed and Sworn to before me this 31st. day of January, 1967

Juanita Brookshire
Notary Public.

My commission expires June 1, 1967

WELL LOG

COMPANY Shenandoah Oil Company

SEC. 7 T. 31S R. 6W

FARM Clarence Bornholdt NO. 1

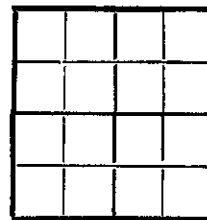
LOC. C NE SW

TOTAL DEPTH 4772'

COUNTY Harper

COMM. 11-22-66 COMP. 12-8-66

CONTRACTOR Garvey Drilling Company



CASING 8 5/8" @ 242' w/200 sx

ELEVATION 1550' DF

PRODUCTION D & A

FIGURES INDICATE BOTTOM OF FORMATIONS

- 75' Red Bed
- 243' Red Bed and Shale
- 985' Shale and Red Bed
- 1170' Shale and Shells
- 1180' Anhydrite
- 1450' Lime and Shale
- 1600' Shale and Lime
- 1810' Lime
- 3330' Shale and Lime
- 3532' Lime and Shale
- 3649' Sand and Shale
- 3700' Lime and Shale
- 3765' Shale and Lime
- 3880' Lime and Shale
- 4145' Lime
- 4290' Lime and Shale
- 4367' Lime
- 4377' Mississippi Chert
- 4470' Chert and Lime
- 4620' Lime with Chert
- 4691' Lime
- 4739' Lime and Shale
- 4767' Shale and Lime
- 4772' Shale with Lime and Chert
- 4772' RTD

RECEIVED
STATE CORPORATION COMMISSION

FEB 1 1967
2-1-67
CONSERVATION DIVISION
Wichita, Kansas

State of Kansas }
County of Barton } SS

I, Sam N. Stephens of Garvey Drilling Company

upon oath state the above and foregoing is a true and correct copy of the log of the Clarence Bornholdt No. 1 well.

Sam N. Stephens

Subscribed and sworn to before me this 16th day of December 19 66

My Commission Expires: November 5th, 1969

Richard D. Day
NOTARY PUBLIC

15-077-30158-0000

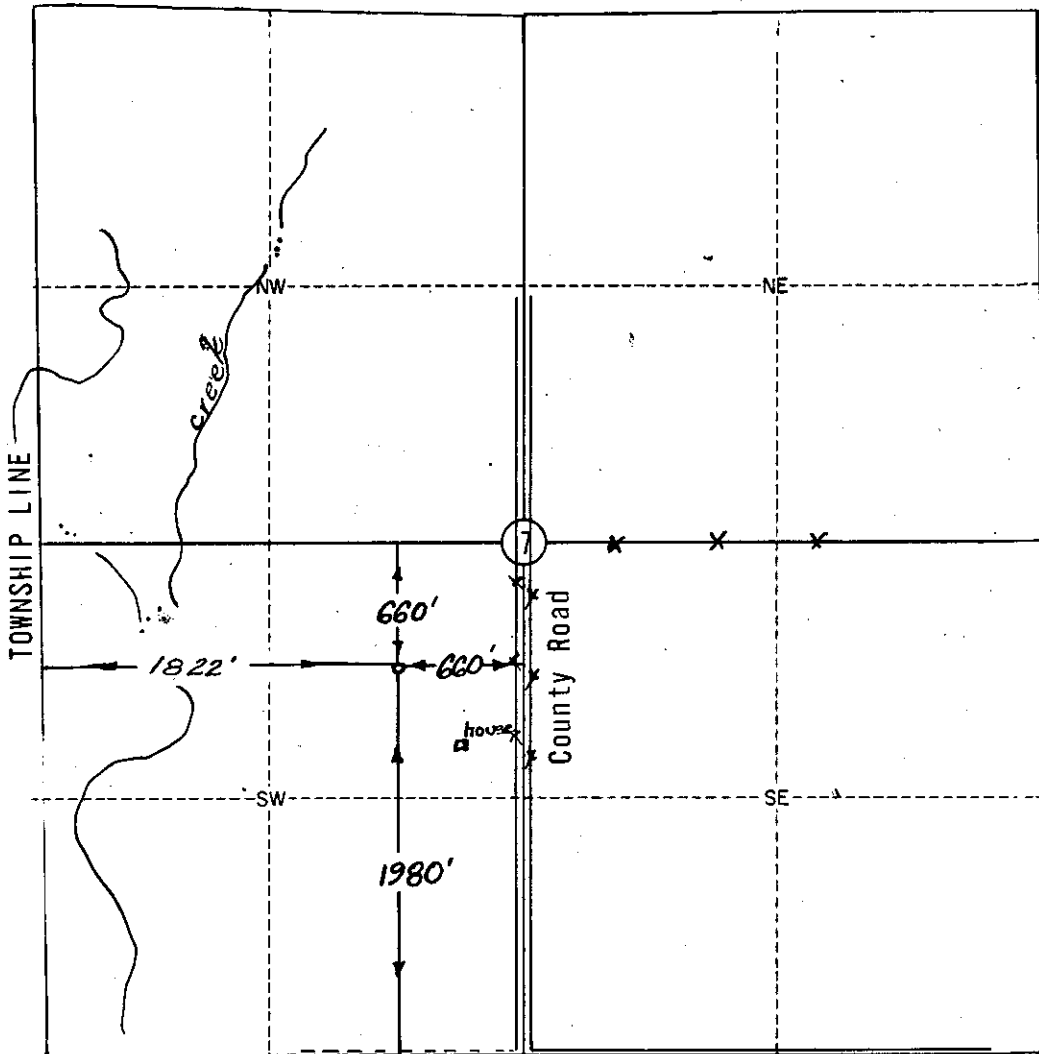
TOPOGRAPHIC, INC.

Surveying & Mapping for the Oil & Gas Industry
1020 E. English St. (316) AMherst 2-4383
Wichita, Kansas 67211

RECEIVED
STATE CORPORATION COMMISSION

FEB 1 1967
2-1-67
CONSERVATION DIVISION
Wichita, Kansas

HARPER County, Kansas
C NE SW Section 7 Township 31S Range 6W



Scale: 1" = 1000'

Date Staked: November 7, 1966

Operator: SHENANDOAH OIL CORPORATION

ELEVATION:
1543' gr 150' E of loc
1538' gr C NE SW

Lease Name: Clarence Barnholdt Well No.: 1

Topography & Vegetation Terraced wheat field-slope to W.

Good Drill Site? possible Reference Stakes or Alternate Location Stakes Set 150' E. of location

Best Accessibility to Location From county road E. of location

Distance & Direction from Hwy Jct or Town From the NE corner of Harper go 4½ miles N. to the S/4 corner of Sec. 7-31S-6W.

CERTIFICATE:

I, Virgil R. Rogers, an authorized agent of Topographic, Inc., do hereby certify that I have surveyed and staked the above described well location in accordance with the laws of the State of Kansas, and that this plat shows the true results of that survey.

TOPOGRAPHIC, INC.
By: Virgil R. Rogers