



KANSAS CORPORATION COMMISSION 1107122
OIL & GAS CONSERVATION DIVISION

Form ACO-1
June 2009

Form Must Be Typed
Form must be Signed
All blanks must be Filled

WELL COMPLETION FORM
WELL HISTORY - DESCRIPTION OF WELL & LEASE

OPERATOR: License # 33813
Name: Jason Oil Company, LLC
Address 1: 3718- 83RD ST
Address 2: PO BOX 701
City: RUSSELL State: KS Zip: 67665 + 0701
Contact Person: JAMESSCHOENBERGER
Phone: (785) 483-4204
CONTRACTOR: License # 31548
Name: Discovery Drilling
Wellsite Geologist: JEFF LAWLER
Purchaser: COFFEYVILLE RESOURCES

Designate Type of Completion:
 New Well Re-Entry Workover
 Oil WSW SWD SIOW
 Gas D&A ENHR SIGW
 OG GSW Temp. Abd.
 CM (Coal Bed Methane)
 Cathodic Other (Core, Expl., etc.): _____

If Workover/Re-entry: Old Well Info as follows:
Operator: _____
Well Name: _____
Original Comp. Date: _____ Original Total Depth: _____
 Deepening Re-perf. Conv. to ENHR Conv. to SWD
 Conv. to GSW
 Plug Back: _____ Plug Back Total Depth _____
 Commingled Permit #: _____
 Dual Completion Permit #: _____
 SWD Permit #: _____
 ENHR Permit #: _____
 GSW Permit #: _____
11/06/2012 11/12/2012 12/18/2012
Spud Date or Date Reached TD Completion Date or
Recompletion Date Recompletion Date

API No. 15 - 15-065-23869-00-00
Spot Description: _____
W2 SW NW Sec. 4 Twp. 8 S. R. 24 East West
1980 Feet from North / South Line of Section
330 Feet from East / West Line of Section

Footages Calculated from Nearest Outside Section Corner:
 NE NW SE SW
County: Graham
Lease Name: Maier Well #: 1
Field Name: NANA NORTHWEST
Producing Formation: LKC
Elevation: Ground: 2349 Kelly Bushing: 2360
Total Depth: 3870 Plug Back Total Depth: _____
Amount of Surface Pipe Set and Cemented at: 221 Feet
Multiple Stage Cementing Collar Used? Yes No
If yes, show depth set: 1992 Feet
If Alternate II completion, cement circulated from: _____
feet depth to: _____ w/ _____ sx cmt.

Drilling Fluid Management Plan
(Data must be collected from the Reserve Pit)
Chloride content: 14000 ppm Fluid volume: 400 bbls
Dewatering method used: Evaporated
Location of fluid disposal if hauled offsite: _____
Operator Name: _____
Lease Name: _____ License #: _____
Quarter Sec. Twp. S. R. East West
County: _____ Permit #: _____

AFFIDAVIT

I am the affiant and I hereby certify that all requirements of the statutes, rules and regulations promulgated to regulate the oil and gas industry have been fully complied with and the statements herein are complete and correct to the best of my knowledge.

Submitted Electronically

KCC Office Use ONLY

Letter of Confidentiality Received
Date: _____
 Confidential Release Date: _____
 Wireline Log Received
 Geologist Report Received
 UIC Distribution
ALT I II III Approved by: Deanna Garrison Date: 01/09/2013



1107122

Operator Name: Jason Oil Company, LLC Lease Name: Maier Well #: 1
 Sec. 4 Twp. 8 S. R. 24 East West County: Graham

INSTRUCTIONS: Show important tops and base of formations penetrated. Detail all cores. Report all final copies of drill stems tests giving interval tested, time tool open and closed, flowing and shut-in pressures, whether shut-in pressure reached static level, hydrostatic pressures, bottom hole temperature, fluid recovery, and flow rates if gas to surface test, along with final chart(s). Attach extra sheet if more space is needed. Attach complete copy of all Electric Wire-line Logs surveyed. Attach final geological well site report.

Drill Stem Tests Taken Yes No
 (Attach Additional Sheets)

Samples Sent to Geological Survey Yes No

Cores Taken Yes No

Electric Log Run Yes No

Electric Log Submitted Electronically Yes No
 (If no, Submit Copy)

<input checked="" type="checkbox"/> Log	Formation (Top), Depth and Datum	<input checked="" type="checkbox"/> Sample
Name	Top	Datum
ANHYDRITE	2008	352
TOPEKA	3372	1012
HEEBNER	3574	-1214
TORONTO	3598	-1238
LKC	3613	-1254
BKC	3807	-1447

List All E. Logs Run:
 DUAL INDUCTION
 DUAL COMPENSATED POROSITY LOG
 MICRO

CASING RECORD <input checked="" type="checkbox"/> New <input type="checkbox"/> Used							
Report all strings set-conductor, surface, intermediate, production, etc.							
Purpose of String	Size Hole Drilled	Size Casing Set (In O.D.)	Weight Lbs. / Ft.	Setting Depth	Type of Cement	# Sacks Used	Type and Percent Additives
SURFACE	12.25	8.625	20	221	COMMON	150	3%CC 2%GEL
PRODUCTION	7.875	5.5	20	3880	COMMON	175	10%SALT 5% GILSONITE

ADDITIONAL CEMENTING / SQUEEZE RECORD				
Purpose:	Depth Top Bottom	Type of Cement	# Sacks Used	Type and Percent Additives
Perforate				
Protect Casing				
Plug Back TD				
Plug Off Zone				

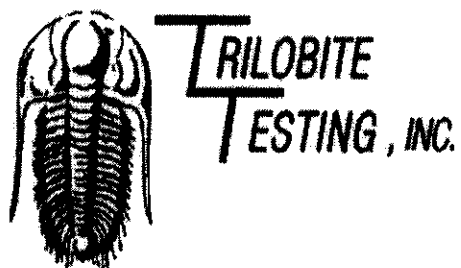
Shots Per Foot	PERFORATION RECORD - Bridge Plugs Set/Type Specify Footage of Each Interval Perforated	Acid, Fracture, Shot, Cement Squeeze Record (Amount and Kind of Material Used)	Depth

TUBING RECORD: Size: _____ Set At: _____ Packer At: _____ Liner Run: Yes No

Date of First, Resumed Production, SWD or ENHR. 01/04/2013 Producing Method: Flowing Pumping Gas Lift Other (Explain) _____

Estimated Production Per 24 Hours	Oil Bbls.	Gas Mcf	Water Bbls.	Gas-Oil Ratio	Gravity
	45		150		

DISPOSITION OF GAS: <input type="checkbox"/> Vented <input type="checkbox"/> Sold <input type="checkbox"/> Used on Lease (If vented, Submit ACO-18.)	METHOD OF COMPLETION: <input type="checkbox"/> Open Hole <input type="checkbox"/> Perf. <input type="checkbox"/> Dually Comp. <input type="checkbox"/> Commingled (Submit ACO-5) <input type="checkbox"/> Other (Specify) _____	PRODUCTION INTERVAL: _____
--	---	-------------------------------



DRILL STEM TEST REPORT

Prepared For: **Jason Oil Co. LLC**

PO Box 701
Russell KS 67665+0701

ATTN: Jeff Lawler

Maier #1

4-8s-24w Graham,KS

Start Date: 2012.11.09 @ 18:51:05

End Date: 2012.11.10 @ 01:22:09

Job Ticket #: 49372 DST #: 1

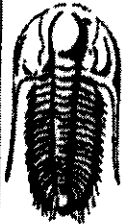
Trilobite Testing, Inc

PO Box 362 Hays, KS 67601

ph: 785-625-4778 fax: 785-625-5620

Printed: 2012.11.20 @ 11:27:16

Jason Oil Co. LLC
4-8s-24w Graham,KS
Maier #1
DST # 1
Oread-Plattsmouth
2012.11.09



**TRILOBITE
TESTING, INC.**

DRILL STEM TEST REPORT

Jason Oil Co. LLC
PO Box 701
Russell KS 67665+0701
ATTN: Jeff Lawler

4-8s-24w Graham,KS
Maier #1
Job Ticket: 49372 DST#: 1
Test Start: 2012.11.09 @ 18:51:05

GENERAL INFORMATION:

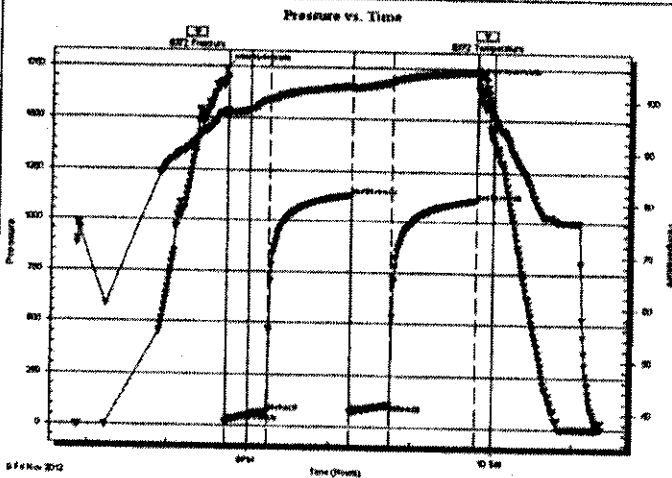
Formation: **Oread-Plattsmouth**
Deviated: No Whipstock: ft (KB)
Time Tool Opened: 20:43:40
Time Test Ended: 01:22:09
Interval: **3527.00 ft (KB) To 3592.00 ft (KB) (TVD)**
Total Depth: **3592.00 ft (KB) (TVD)**
Hole Diameter: **7.88 inches** Hole Condition: Fair

Test Type: Conventional Bottom Hole (Initial)
Tester: Andy Carreira
Unit No: 39
Reference Elevations: 2360.00 ft (KB)
2352.00 ft (CF)
KB to GR/CF: 8.00 ft

Serial #: 8372 **Outside**
Press@RunDepth: 108.30 psig @ 3534.00 ft (KB)
Start Date: 2012.11.09 End Date: 2012.11.10
Start Time: 18:51:05 End Time: 01:22:10

Capacity: 8000.00 psig
Last Calib.: 2012.11.10
Time On Btm: 2012.11.09 @ 20:42:20
Time Off Btm: 2012.11.09 @ 23:48:20

TEST COMMENT: IF:(30min) 2" blow in 3 min. 6" in 14 min. built to 10"
IS:(60min) No Return
FF:(30min) 2" blow in 5 min. 6" in 18 min. built to 8"
FSI:(60min) No Return



PRESSURE SUMMARY

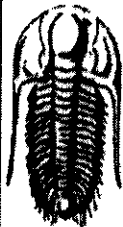
Time (Min.)	Pressure (psig)	Temp (deg F)	Annotation
0	1742.61	97.46	Initial Hydro-static
2	16.30	96.66	Open To Flow (1)
32	68.73	99.83	Shut-In(1)
93	1132.18	102.55	End Shut-In(1)
93	70.67	102.12	Open To Flow (2)
123	108.30	103.40	Shut-In(2)
186	1110.14	105.54	End Shut-In(2)
186	1693.06	105.71	Final Hydro-static

Recovery

Length (ft)	Description	Volume (bb)
200.00	MVW m=30% w=70%	2.54

Gas Rates

Choke (inches)	Pressure (psig)	Gas Rate (Mcf/d)



**TRILOBITE
TESTING, INC.**

DRILL STEM TEST REPORT

TOOL DIAGRAM

Jason Oil Co. LLC

4-8s-24w Graham, KS

PO Box 701
Russell KS 67665+0701

Maier #1

Job Ticket: 49372 DST#: 1

ATTN: Jeff Lawler

Test Start: 2012.11.09 @ 18:51:05

Tool Information

Drill Pipe:	Length: 3483.00 ft	Diameter: 3.80 inches	Volume: 48.86 bbl	Tool Weight: 2500.00 lb
Heavy Wt. Pipe:	Length: 0.00 ft	Diameter: 2.70 inches	Volume: 0.00 bbl	Weight set on Packer: 24000.00 lb
Drill Collar:	Length: 29.21 ft	Diameter: 2.25 inches	Volume: 0.14 bbl	Weight to Pull Loose: 58000.00 lb
			<u>Total Volume: 49.00 bbl</u>	Tool Chased 0.00 ft
Drill Pipe Above KB:	5.21 ft			String Weight: Initial 38000.00 lb
Depth to Top Packer:	3527.00 ft			Final 40000.00 lb
Depth to Bottom Packer:	ft			
Interval between Packers:	65.00 ft			
Tool Length:	85.00 ft			
Number of Packers:	2	Diameter: 6.75 inches		

Tool Comments:

Tool Description	Length (ft)	Serial No.	Position	Depth (ft)	Accum. Lengths
Change Over Sub	1.00			3508.00	
Shut In Tool	5.00			3513.00	
Hydraulic tool	5.00			3518.00	
Packer	5.00			3523.00	20.00 Bottom Of Top Packer
Packer	4.00			3527.00	
Stubb	1.00			3528.00	
Perforations	5.00			3533.00	
Change Over Sub	1.00			3534.00	
Recorder	0.00	8017	Inside	3534.00	
Recorder	0.00	8372	Outside	3534.00	
Drill Pipe	32.00			3566.00	
Change Over Sub	1.00			3567.00	
Perforations	22.00			3589.00	
Bullnose	3.00			3592.00	65.00 Bottom Packers & Anchor
Total Tool Length:	85.00				



**TRILOBITE
TESTING, INC.**

DRILL STEM TEST REPORT

FLUID SUMMARY

Jason Oil Co. LLC
PO Box 701
Russell KS 67665-0701
ATTN: Jeff Lawler

4-8s-24w Graham,KS
Maier #1
Job Ticket: 49372 **DST#: 1**
Test Start: 2012.11.09 @ 18:51:05

Mud and Cushion Information

Mud Type: Gel Chem	Cushion Type:	Oil API:	deg API
Mud Weight: 9.00 lb/gal	Cushion Length: ft	Water Salinity: 72000 ppm	
Viscosity: 52.00 sec/qt	Cushion Volume: bbl		
Water Loss: 7.55 in ³	Gas Cushion Type:		
Resistivity: ohm.m	Gas Cushion Pressure: psig		
Salinity: 500.00 ppm			
Filter Cake: inches			

Recovery Information

Recovery Table

Length ft	Description	Volume bbl
200.00	MW m=30% w=70%	2.539

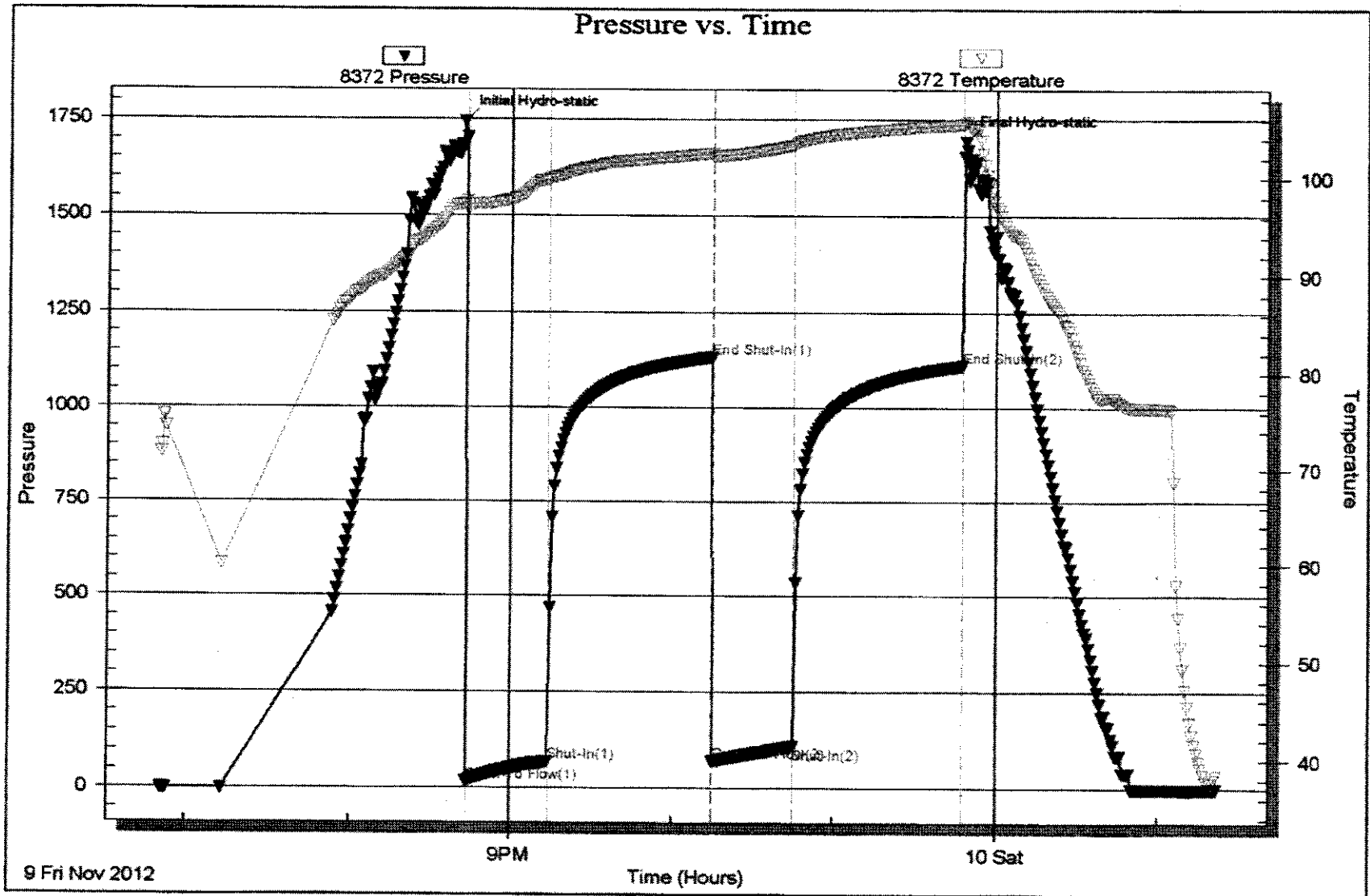
Total Length: 200.00 ft Total Volume: 2.539 bbl
Num Fluid Samples: 0 Num Gas Bombs: 0 Serial #:
Laboratory Name: Laboratory Location:
Recovery Comments:

Serial #: 8372

Outside Jason Oil Co. LLC

Maier #1

DST Test Number: 1

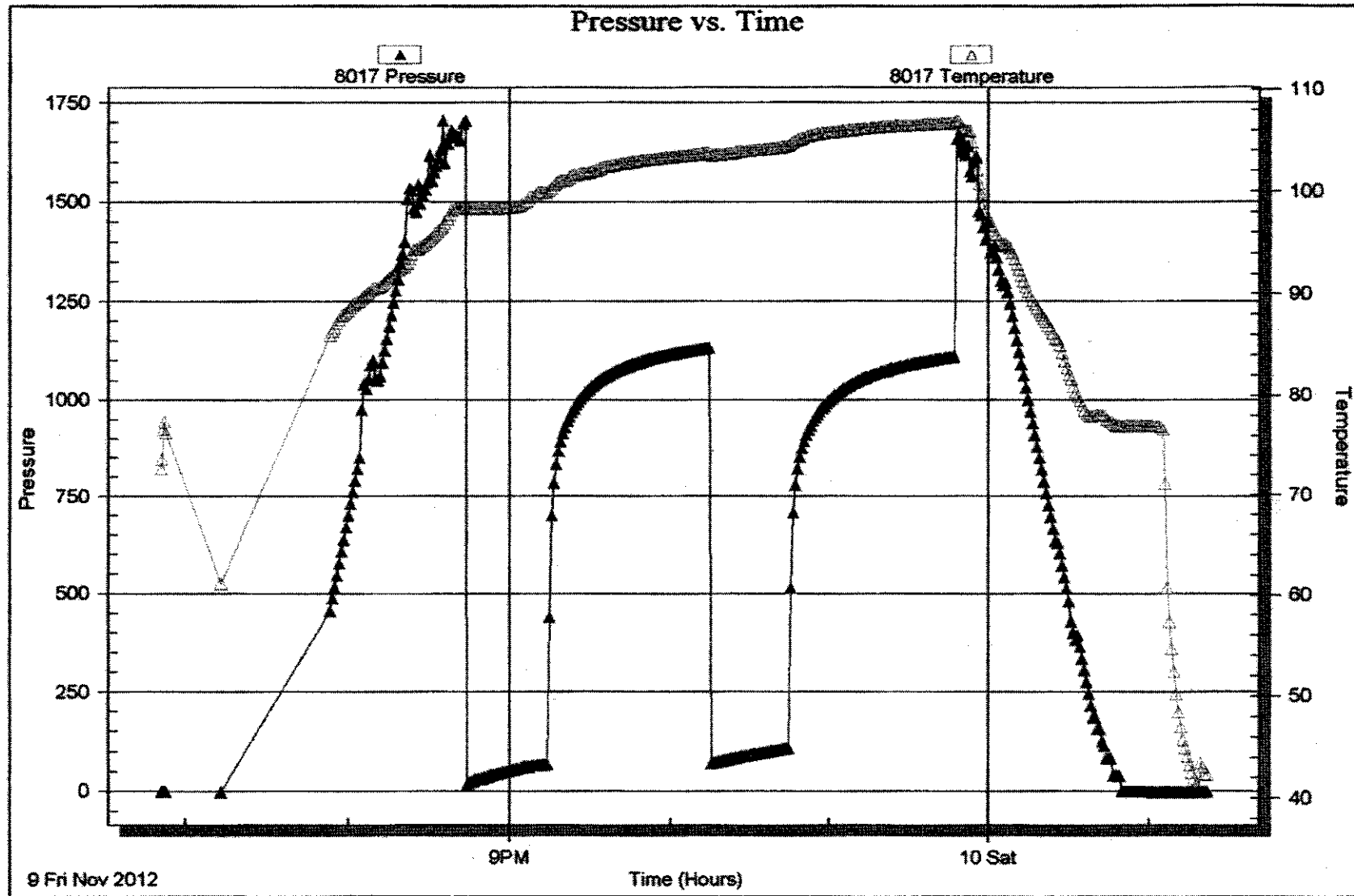


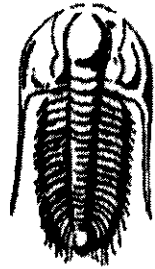
Serial #: 8017

Inside Jason Oil Co. LLC

Maier #1

DST Test Number: 1





**TRILOBITE
TESTING, INC.**

DRILL STEM TEST REPORT

Prepared For: **Jason Oil Co. LLC**

PO Box 701
Russell KS 67665+0701

ATTN: Jeff Lawler

Maier #1

4-8s-24w Graham,KS

Start Date: 2012.11.10 @ 10:30:00

End Date: 2012.11.10 @ 17:15:30

Job Ticket #: 49373 DST #: 2

Trilobite Testing, Inc

PO Box 362 Hays, KS 67601

ph: 785-625-4778 fax: 785-625-5620

Printed: 2012.11.20 @ 11:26:18

Jason Oil Co. LLC 4-8s-24w Graham,KS Maier #1 DST # 2 LKC-C-D 2012.11.10



TRILOBITE TESTING, INC.

DRILL STEM TEST REPORT

Jason Oil Co. LLC
 PO Box 701
 Russell KS 67665+0701
 ATTN: Jeff Lawler

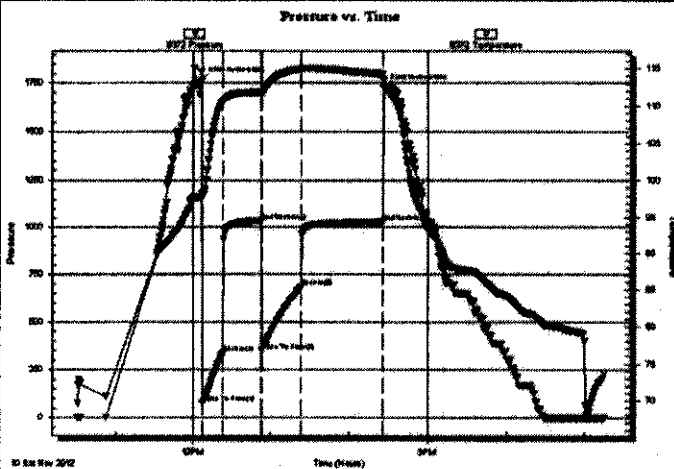
4-8s-24w Graham, KS
Maier #1
 Job Ticket: 49373 **DST#: 2**
 Test Start: 2012.11.10 @ 10:30:00

GENERAL INFORMATION:

Formation: **LKC"C-D"**
 Deviated: No Whipstock: ft (KB)
 Test Type: Conventional Bottom Hole (Reset)
 Time Tool Opened: 12:07:40 Tester: Andy Carreira
 Time Test Ended: 17:15:30 Unit No: 39
 Interval: **3636.00 ft (KB) To 3678.00 ft (KB) (TVD)** Reference Elevations: 2360.00 ft (KB)
 Total Depth: **3678.00 ft (KB) (TVD)** 2352.00 ft (CF)
 Hole Diameter: **7.88 inches** Hole Condition: Fair KB to GR/CF: 8.00 ft

Serial #: 8372 Outside
 Press@RunDepth: 682.33 psig @ 3641.00 ft (KB) Capacity: 8000.00 psig
 Start Date: 2012.11.10 End Date: 2012.11.10 Last Calib.: 2012.11.10
 Start Time: 10:30:05 End Time: 17:15:29 Time On Btm: 2012.11.10 @ 12:06:50
 Time Off Btm: 2012.11.10 @ 14:26:20

TEST COMMENT: IF:(15min) BOB 2 min.
 ISl:(30min) No Return
 FF:(30min) BOB 3 min.
 FSl:(60min) Return surface blow



PRESSURE SUMMARY

Time (Min.)	Pressure (psig)	Temp (deg F)	Annotation
0	1767.34	98.15	Initial Hydro-static
1	77.16	97.93	Open To Flow (1)
17	337.56	110.66	Shut-In(1)
46	1036.26	111.77	End Shut-In(1)
47	348.20	111.54	Open To Flow (2)
77	682.33	114.95	Shut-In(2)
139	1032.19	114.31	End Shut-In(2)
140	1726.29	113.50	Final Hydro-static

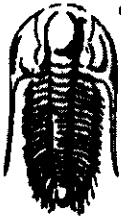
Recovery

Length (ft)	Description	Volume (bbl)
1005.00	MW m=tr w=100%	13.83
380.00	GOSMW g=5% o=3% m=12% w=80%	5.33
40.00	GOCWM g=5% o=10% w=40% m=45%	0.56
25.00	GO g=10% o=90%	0.35

* Recovery from multiple tests

Gas Rates

	Choke (inches)	Pressure (psig)	Gas Rate (Mcf/d)



**TRILOBITE
TESTING, INC.**

DRILL STEM TEST REPORT

TOOL DIAGRAM

Jason Oil Co. LLC

4-8s-24w Graham,KS

PO Box 701
Russell KS 67665+0701

Maier #1

Job Ticket: 49373

DST#: 2

ATTN: Jeff Lawler

Test Start: 2012.11.10 @ 10:30:00

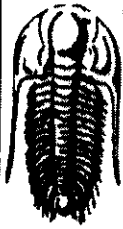
Tool Information

Drill Pipe:	Length: 3607.00 ft	Diameter: 3.80 inches	Volume: 50.60 bbl	Tool Weight: 2500.00 lb
Heavy Wt. Pipe:	Length: 0.00 ft	Diameter: 2.70 inches	Volume: 0.00 bbl	Weight set on Packer: 24000.00 lb
Drill Collar:	Length: 29.21 ft	Diameter: 2.25 inches	Volume: 0.14 bbl	Weight to Pull Loose: 52000.00 lb
			<u>Total Volume: 50.74 bbl</u>	Tool Chased 0.00 ft
Drill Pipe Above KB:	20.21 ft			String Weight: Initial 40000.00 lb
Depth to Top Packer:	3636.00 ft			Final 48000.00 lb
Depth to Bottom Packer:	ft			
Interval between Packers:	42.00 ft			
Tool Length:	62.00 ft			
Number of Packers:	2	Diameter: 6.75 inches		

Tool Comments:

Tool Description	Length (ft)	Serial No.	Position	Depth (ft)	Accum. Lengths
Change Over Sub	1.00			3617.00	
Shut In Tool	5.00			3622.00	
Hydraulic tool	5.00			3627.00	
Packer	5.00			3632.00	20.00 Bottom Of Top Packer
Packer	4.00			3636.00	
Stubb	1.00			3637.00	
Perforations	3.00			3640.00	
Change Over Sub	1.00			3641.00	
Recorder	0.00	8017	Inside	3641.00	
Recorder	0.00	8372	Outside	3641.00	
Drill Pipe	31.00			3672.00	
Change Over Sub	1.00			3673.00	
Perforations	2.00			3675.00	
Bullnose	3.00			3678.00	42.00 Bottom Packers & Anchor

Total Tool Length: 62.00



**TRILOBITE
TESTING, INC.**

DRILL STEM TEST REPORT

FLUID SUMMARY

Jason Oil Co. LLC

4-8s-24w Graham, KS

PO Box 701
Russell KS 67665+0701

Maier #1

Job Ticket: 49373

DST#: 2

ATTN: Jeff Lawler

Test Start: 2012.11.10 @ 10.30.00

Mud and Cushion Information

Mud Type: Gel Chem

Cushion Type:

Oil API:

deg API

Mud Weight: 9.00 lb/gal

Cushion Length:

ft

Water Salinity:

60000 ppm

Viscosity: 52.00 sec/qt

Cushion Volume:

bbf

Water Loss: 7.55 in³

Gas Cushion Type:

Resistivity: ohm m

Gas Cushion Pressure:

psig

Salinity: 1000.00 ppm

Filter Cake: inches

Recovery Information

Recovery Table

Length ft	Description	Volume bbf
1005.00	MW n=tr w=100%	13.831
380.00	GOSMW g=5% o=3% m=12% w=80%	5.330
40.00	GOCWM g=5% o=10% w=40% m=45%	0.561
25.00	GO g=10% o=90%	0.351

Total Length: 1450.00 ft

Total Volume: 20.073 bbf

Num Fluid Samples: 0

Num Gas Bombs: 0

Serial #:

Laboratory Name:

Laboratory Location:

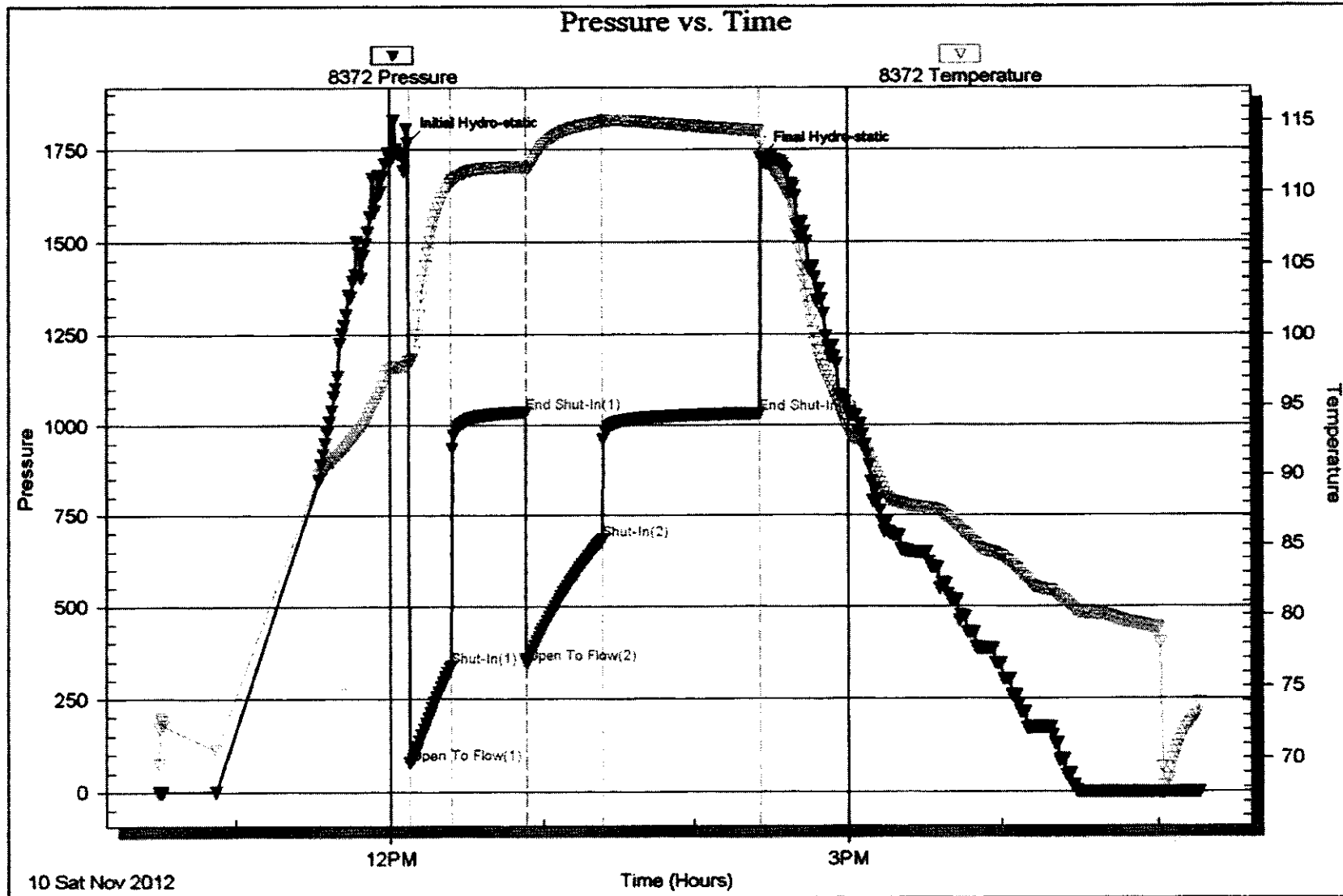
Recovery Comments:

Serial #: 8372

Outside Jason Oil Co. LLC

Major #1

DST Test Number: 2



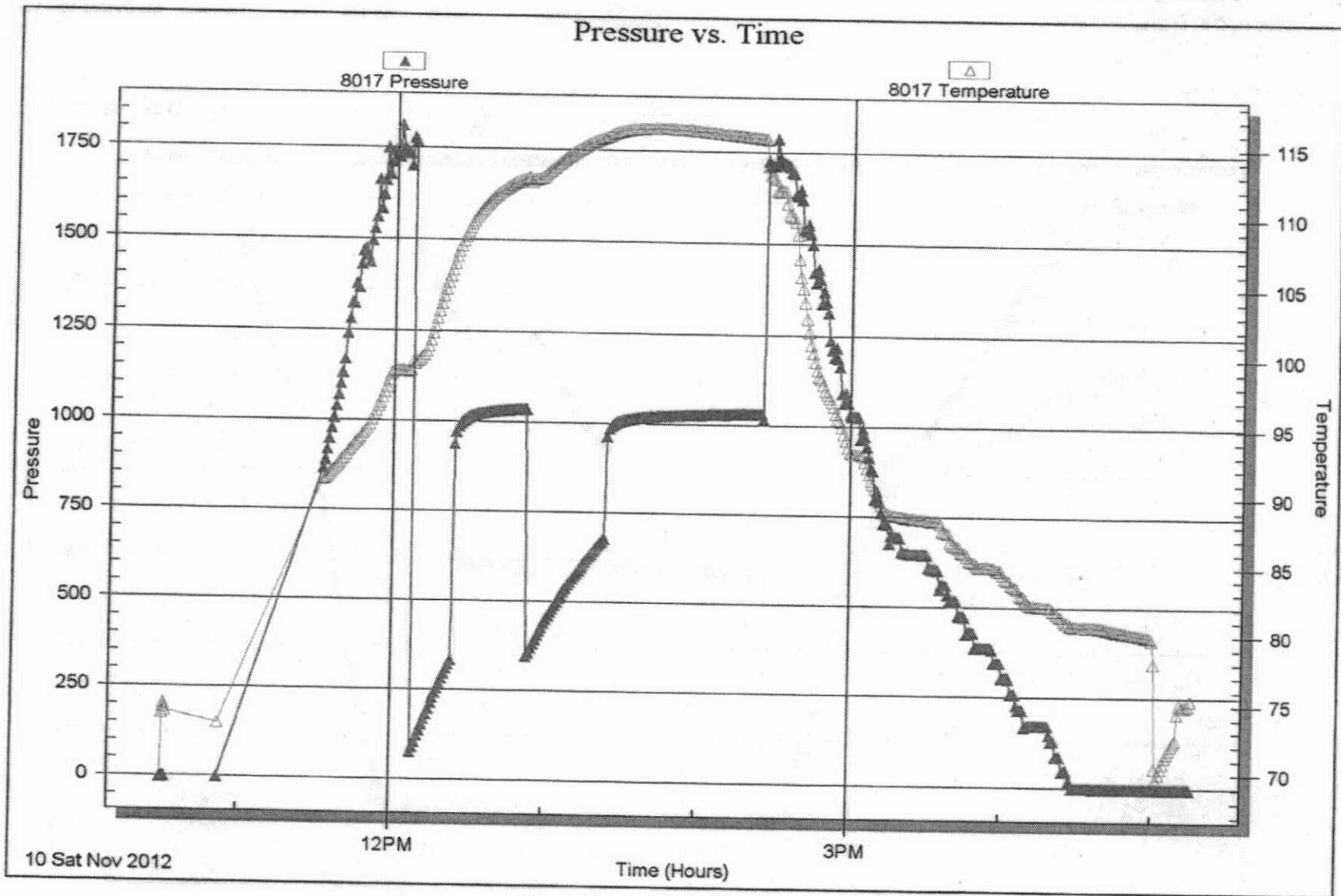
Serial #: 8017

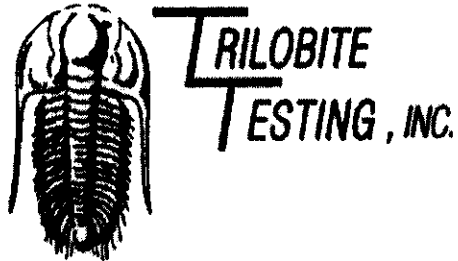
Inside

Jason Oil Co. LLC

Maier #1

DST Test Number: 2





DRILL STEM TEST REPORT

Prepared For: **Jason Oil Co. LLC**
PO Box 701
Russell KS 67665+0701

ATTN: Jeff Lawler

Maier #1

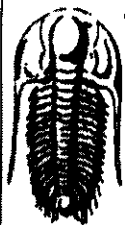
4-8s-24w Graham,KS

Start Date: 2012.11.11 @ 04:22:05
End Date: 2012.11.11 @ 10:20:59
Job Ticket #: 49374 DST #: 3

Trilobite Testing, Inc.
PO Box 362 Hays, KS 67601
ph: 785-625-4778 fax: 785-625-5620

Printed: 2012.11.20 @ 11:25:02

Jason Oil Co. LLC 4-8s-24w Graham,KS Maier #1 DST # 3 LKC"HJ" 2012.11.11



**TRILOBITE
TESTING, INC.**

DRILL STEM TEST REPORT

Jason Oil Co. LLC
PO Box 701
Russell KS 67665+0701
ATTN: Jeff Lawler

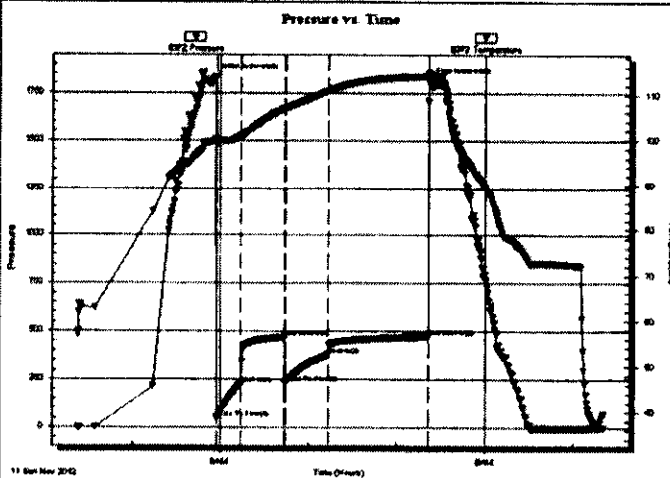
4-8s-24w Graham, KS
Maier #1
Job Ticket: 49374 DST#: 3
Test Start: 2012.11.11 @ 04:22:05

GENERAL INFORMATION:

Formation: **LKC"H-I"**
Deviated: **No** Whipstock: **ft (KB)**
Time Tool Opened: **05:57:30**
Time Test Ended: **10:20:59**
Interval: **3724.00 ft (KB) To 3770.00 ft (KB) (TVD)**
Total Depth: **3770.00 ft (KB) (TVD)**
Hole Diameter: **7.88 inches** Hole Condition: **Fair**
Test Type: **Conventional Bottom Hole (Reset)**
Tester: **Andy Carreira**
Unit No.: **39**
Reference Elevations: **2360.00 ft (KB)**
2352.00 ft (CF)
KB to GR/CF: **8.00 ft**

Serial #: 8372 **Outside**
Press@RunDepth: **376.75 psig @ 3731.00 ft (KB)** Capacity: **8000.00 psig**
Start Date: **2012.11.11** End Date: **2012.11.11** Last Calib.: **2012.11.11**
Start Time: **04:22:05** End Time: **10:20:59** Time On Btm.: **2012.11.11 @ 05:56:30**
Time Off Btm.: **2012.11.11 @ 08:21:30**

TEST COMMENT: IF:(15min) BOB 2 min.
IS:(30min) No Return
FF:(30min) BOB 4 min.
FSt:(60min) No Return



PRESSURE SUMMARY

Time (Min.)	Pressure (psig)	Temp (deg F)	Annotation
0	1830.47	99.87	Initial Hydro-static
1	49.06	99.08	Open To Flow (1)
18	227.85	100.70	Shut-In(1)
48	469.18	106.87	End Shut-In(1)
48	233.72	106.76	Open To Flow (2)
78	376.75	110.80	Shut-In(2)
145	472.32	114.05	End Shut-In(2)
145	1811.44	114.46	Final Hydro-static

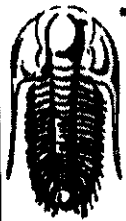
Recovery

Length (ft)	Description	Volume (bbl)
785.00	MW m=tr w=100%	10.75
1.00	CO o=100%	0.01

* Recovery from multiple tests

Gas Rates

	Choke (inches)	Pressure (psig)	Gas Rate (Mcf/d)



**TRILOBITE
TESTING, INC.**

DRILL STEM TEST REPORT

Jason Oil Co. LLC
PO Box 701
Russell KS 67865+0701
ATTN: Jeff Lawler

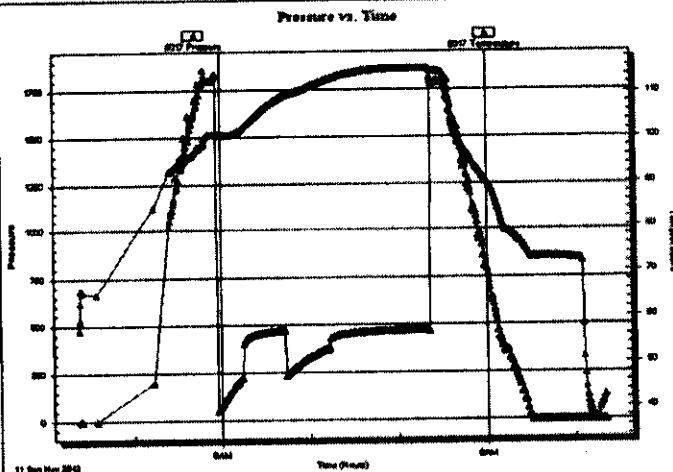
4-8s-24w Graham, KS
Maier #1
Job Ticket: 49374 DST#: 3
Test Start: 2012.11.11 @ 04:22:05

GENERAL INFORMATION:

Formation: LKC "H-I"
Deviated: No Whipstock: ft (KB)
Time Tool Opened: 05:57:30
Time Test Ended: 10:20:59
Interval: 3724.00 ft (KB) To 3770.00 ft (KB) (TVD)
Total Depth: 3770.00 ft (KB) (TVD)
Hole Diameter: 7.88 inches Hole Condition: Fair
Test Type: Conventional Bottom Hole (Reset)
Tester: Andy Carreira
Unit No: 39
Reference Elevations: 2360.00 ft (KB)
2352.00 ft (CF)
KB to GR/CF: 8.00 ft

Serial #: 8017 Inside
Press@RunDepth: psig @ 3731.00 ft (KB) Capacity: 8000.00 psig
Start Date: 2012.11.11 End Date: 2012.11.11 Last Calib.: 2012.11.11
Start Time: 04:22:05 End Time: 10:20:59 Time On Btm:
Time Off Btm:

TEST COMMENT: IF:(15min) BOB 2 min.
IS:(30min) No Return
FF:(30min) BOB 4 min.
FS:(60min) No Return



PRESSURE SUMMARY

Time (Min.)	Pressure (psig)	Temp (deg F)	Annotation

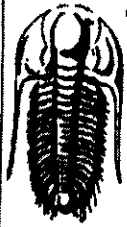
Recovery

Length (ft)	Description	Volume (bbl)
785.00	MW m=tr w=100%	10.75
1.00	CO o=100%	0.01

Gas Rates

Choke (inches)	Pressure (psig)	Gas Rate (Mcf/d)

* Recovery from multiple tests



**TRILOBITE
TESTING, INC.**

DRILL STEM TEST REPORT

TOOL DIAGRAM

Jason Oil Co. LLC
 PO Box 701
 Russell KS 67665+0701
 ATTN: Jeff Lawler

4-8s-24w Graham, KS
Maier #1
 Job Ticket: 49374 DST#: 3
 Test Start: 2012 11.11 @ 04:22:05

Tool Information

Drill Pipe:	Length: 3705.00 ft	Diameter: 3.80 inches	Volume: 51.97 bbl	Tool Weight: 2500.00 lb
Heavy Wt. Pipe:	Length: 0.00 ft	Diameter: 2.70 inches	Volume: 0.00 bbl	Weight set on Packer: 24000.00 lb
Drill Collar:	Length: 29.21 ft	Diameter: 2.25 inches	Volume: 0.14 bbl	Weight to Pull Loose: 54000.00 lb
			<u>Total Volume: 52.11 bbl</u>	Tool Chased: 0.00 ft
Drill Pipe Above KB:	30.21 ft			String Weight: Initial 40000.00 lb
Depth to Top Packer:	3724.00 ft			Final 44000.00 lb
Depth to Bottom Packer:	ft			
Interval between Packers:	46.00 ft			
Tool Length:	66.00 ft			
Number of Packers:	2	Diameter: 6.75 inches		

Tool Comments:

Tool Description

Tool Description	Length (ft)	Serial No.	Position	Depth (ft)	Accum. Lengths
Change Over Sub	1.00			3705.00	
Shut In Tool	5.00			3710.00	
Hydraulic tool	5.00			3715.00	
Packer	5.00			3720.00	20.00 Bottom Of Top Packer
Packer	4.00			3724.00	
Stubb	1.00			3725.00	
Perforations	5.00			3730.00	
Change Over Sub	1.00			3731.00	
Recorder	0.00	8017	Inside	3731.00	
Recorder	0.00	8372	Outside	3731.00	
Drill Pipe	31.00			3762.00	
Change Over Sub	1.00			3763.00	
Perforations	4.00			3767.00	
Bullnose	3.00			3770.00	46.00 Bottom Packers & Anchor
Total Tool Length:	66.00				



**TRILOBITE
TESTING, INC.**

DRILL STEM TEST REPORT

FLUID SUMMARY

Jason Oil Co. LLC

4-8s-24w Graham, KS

PO Box 701
Russell KS 67665+0701

Maier #1

Job Ticket: 49374

DST#: 3

ATTN: Jeff Lawler

Test Start: 2012.11.11 @ 04:22:05

Mud and Cushion Information

Mud Type: Gel Chem

Cushion Type:

Oil API:

deg API

Mud Weight: 9.00 lb/gal

Cushion Length:

ft

Water Salinity:

43000 ppm

Viscosity: 53.00 sec/qt

Cushion Volume:

bbbl

Water Loss: 7.95 in³

Gas Cushion Type:

Resistivity: ohm.m

Gas Cushion Pressure:

psig

Salinity: 1000.00 ppm

Filter Cake: inches

Recovery Information

Recovery Table

Length ft	Description	Volume bbbl
785.00	MW m=tr w=100%	10.745
1.00	CO c=100%	0.014

Total Length: 786.00 ft Total Volume: 10.759 bbl

Num Fluid Samples: 0

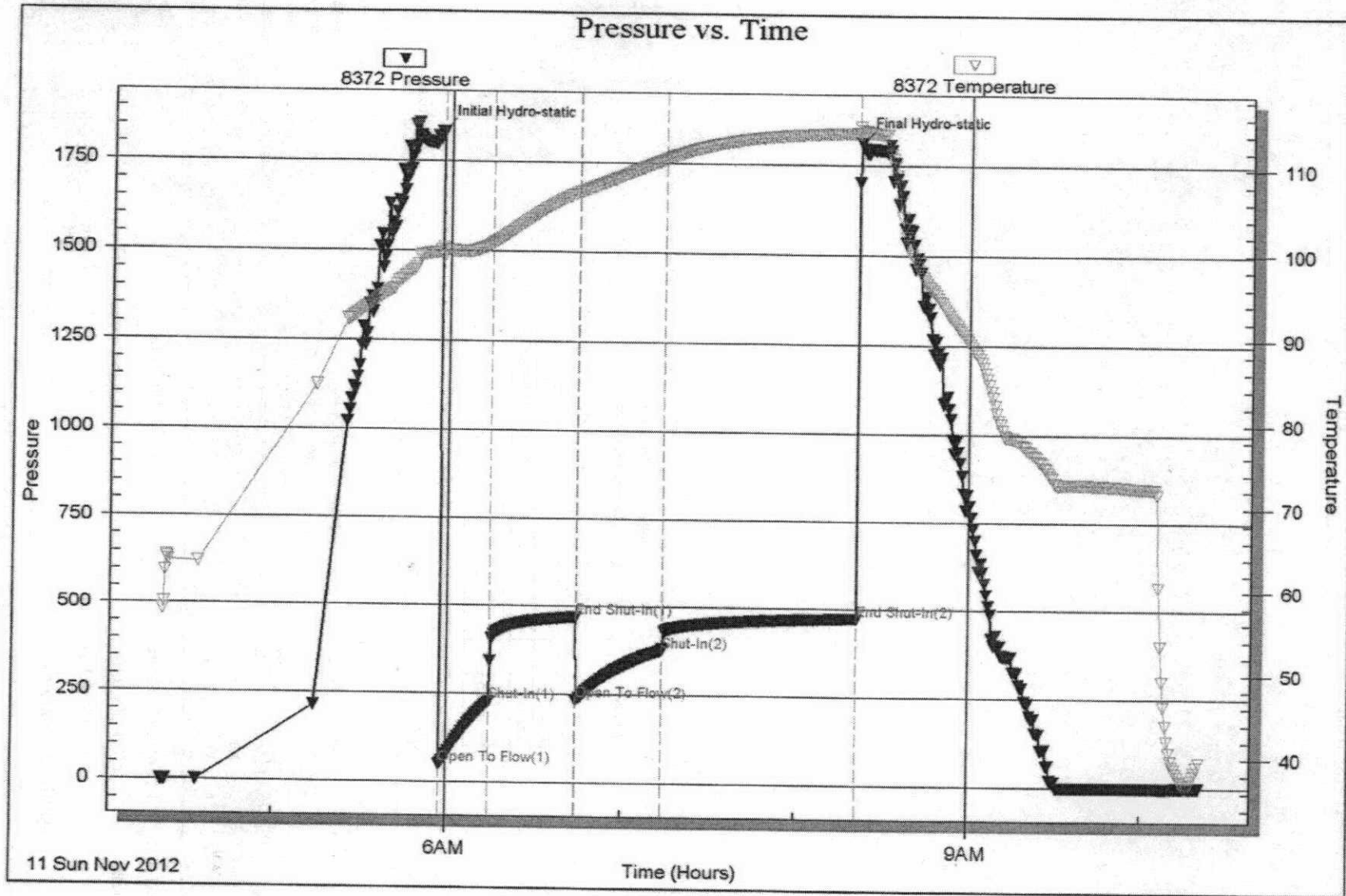
Num Gas Bombs: 0

Serial #:

Laboratory Name:

Laboratory Location:

Recovery Comments:

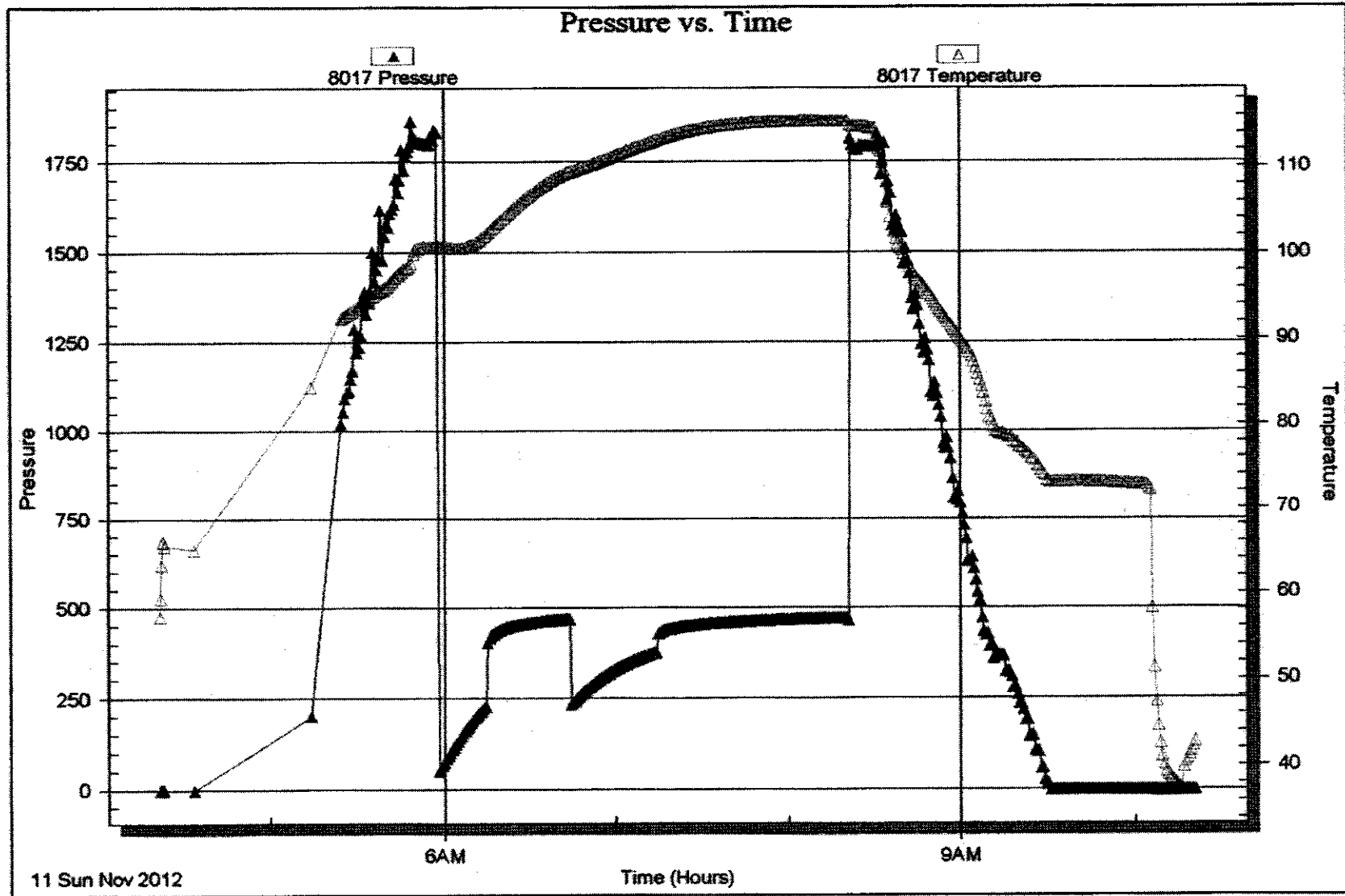


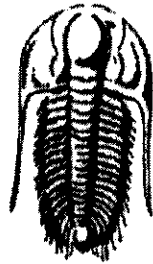
Serial #: 8017

Inside Jason Oil Co. LLC

Well #1

DST Test Number: 3





**TRILOBITE
TESTING, INC.**

DRILL STEM TEST REPORT

Prepared For: **Jason Oil Co. LLC**

PO Box 701
Russell KS 67665+0701

ATTN: Jeff Lawler

Maier #1

4-8s-24w Graham,KS

Start Date: 2012.11.11 @ 18:20:05

End Date: 2012.11.11 @ 22:35:20

Job Ticket #: 49375 DST #: 4

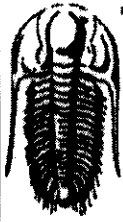
Trilobite Testing, Inc

PO Box 362 Hays, KS 67601

ph: 785-625-4778 fax: 785-625-5620

Printed: 2012.11.20 @ 11:23:44

Jason Oil Co. LLC 4-8s-24w Graham,KS Maier #1 DST # 4 LKC-JK 2012.11.11



**TRILOBITE
TESTING, INC.**

DRILL STEM TEST REPORT

Jason Oil Co. LLC
 PO Box 701
 Russell KS 67665+0701
 ATTN: Jeff Lawler

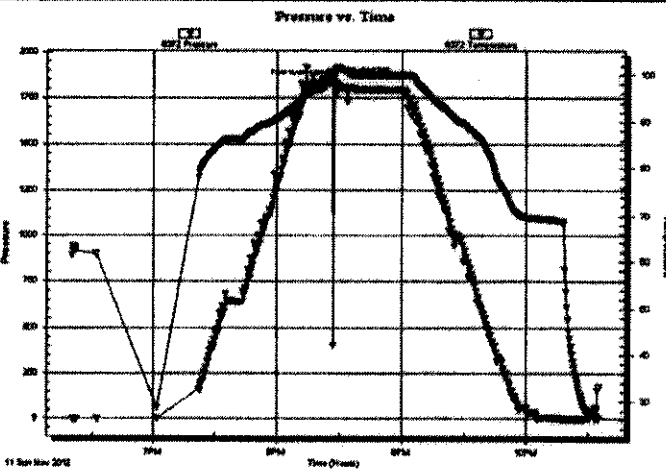
4-8s-24w Graham, KS
Maier #1
 Job Ticket: 49375 **DST#: 4**
 Test Start: 2012.11.11 @ 18:20:05

GENERAL INFORMATION:

Formation: **LKC"J-K"**
 Deviated: No Whipstock: ft (KB)
 Test Type: Conventional Bottom Hole (Reset)
 Time Tool Opened:
 Tester: Andy Carreira
 Time Test Ended: 22:35:20
 Unit No: 39
 Interval: **3769.00 ft (KB) To 3810.00 ft (KB) (TVD)**
 Reference Elevations: 2360.00 ft (KB)
 Total Depth: 3810.00 ft (KB) (TVD)
 2352.00 ft (CF)
 Hole Diameter: 7.88 inches Hole Condition: Fair
 KB to GR/CF: 8.00 ft

Serial #: 8372 **Outside**
 Press@RunDepth: psig @ 3774.00 ft (KB) Capacity: 8000.00 psig
 Start Date: 2012.11.11 End Date: 2012.11.11 Last Calib.: 2012.11.11
 Start Time: 18:20:05 End Time: 22:35:20 Time On Btm: 2012.11.11 @ 20:23:20
 Time Off Btm: 2012.11.11 @ 20:27:20

TEST COMMENT: Misrun- Packer Failure



PRESSURE SUMMARY

Time (Min.)	Pressure (psig)	Temp (deg F)	Annotation
0	1845.56	97.26	Initial Hydro-static
4	1832.18	99.47	Final Hydro-static

Recovery

Length (ft)	Description	Volume (bbl)
100.00	Drilling Mud	1.14

* Recovery from multiple tests

Gas Rates

Choke (inches)	Pressure (psig)	Gas Rate (Mcf/d)



**TRILOBITE
TESTING, INC.**

DRILL STEM TEST REPORT

TOOL DIAGRAM

Jason Oil Co. LLC

4-8s-24w Graham, KS

PO Box 701
Russell KS 67665+0701

Maier #1

Job Ticket: 49375

DST#: 4

ATTN: Jeff Lawler

Test Start: 2012.11.11 @ 18:20:05

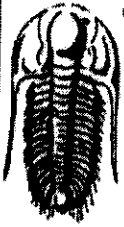
Tool Information

Drill Pipe:	Length: 3735.00 ft	Diameter: 3.80 inches	Volume: 52.39 bbl	Tool Weight: 2500.00 lb
Heavy Wt. Pipe:	Length: 0.00 ft	Diameter: 2.70 inches	Volume: 0.00 bbl	Weight set on Packer: 28000.00 lb
Drill Collar:	Length: 29.21 ft	Diameter: 2.25 inches	Volume: 0.14 bbl	Weight to Pull Loose: 42000.00 lb
			<u>Total Volume: 52.53 bbl</u>	Tool Chased 0.00 ft
Drill Pipe Above KB:	10.21 ft			String Weight: Initial 40000.00 lb
Depth to Top Packer:	3769.00 ft			Final 41000.00 lb
Depth to Bottom Packer:	ft			
Interval between Packers:	41.00 ft			
Tool Length:	56.00 ft			
Number of Packers:	2	Diameter: 6.75 inches		

Tool Comments: Geo Requested 1 packer only

Tool Description	Length (ft)	Serial No.	Position	Depth (ft)	Accum. Lengths
Change Over Sub	1.00			3755.00	
Shut In Tool	5.00			3760.00	
Hydraulic tool	5.00			3765.00	
Packer	4.00			3769.00	15.00 Bottom Of Top Packer
Stubb	1.00			3770.00	
Perforations	3.00			3773.00	
Change Over Sub	1.00			3774.00	
Recorder	0.00	8017	Inside	3774.00	
Recorder	0.00	8372	Outside	3774.00	
Drill Pipe	31.00			3805.00	
Change Over Sub	1.00			3806.00	
Perforations	1.00			3807.00	
Bullnose	3.00			3810.00	41.00 Anchor Tool

Total Tool Length: 56.00



**TRILOBITE
TESTING, INC.**

DRILL STEM TEST REPORT

FLUID SUMMARY

Jason Oil Co. LLC
PO Box 701
Russell KS 67665+0701
ATTN: Jeff Lawler

4-8s-24w Graham,KS
Maier #1
Job Ticket: 49375 DST#: 4
Test Start: 2012.11.11 @ 18:20:05

Mud and Cushion Information

Mud Type: Gel Chem	Cushion Type:	Oil API:	deg API
Mud Weight: 9.00 lb/gal	Cushion Length: ft	Water Salinity:	ppm
Viscosity: 53.00 sec/qt	Cushion Volume: bbl		
Water Loss: 7.96 in*	Gas Cushion Type:		
Resistivity: ohm.m	Gas Cushion Pressure: psig		
Salinity: 1000.00 ppm			
Filter Cake: inches			

Recovery Information

Recovery Table

Length ft	Description	Volume bbl
100.00	Drilling Mud	1.137

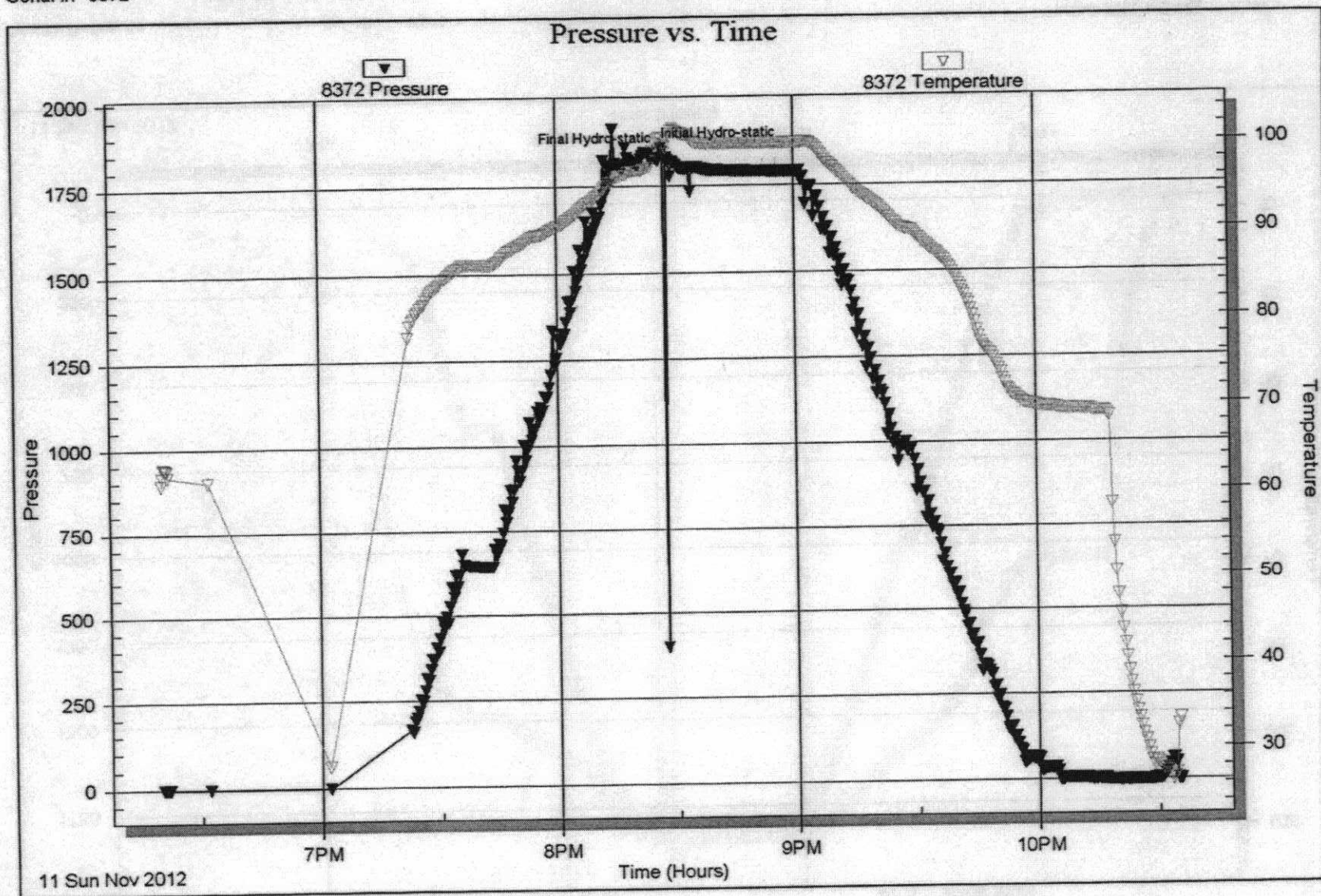
Total Length: 100.00 ft Total Volume: 1.137 bbl
 Num Fluid Samples: 0 Num Gas Bombs: 0 Serial #:
 Laboratory Name: Laboratory Location:
 Recovery Comments:

Serial #: 8372

Outside Jason Oil Co. LLC

Maier #1

DST Test Number: 4



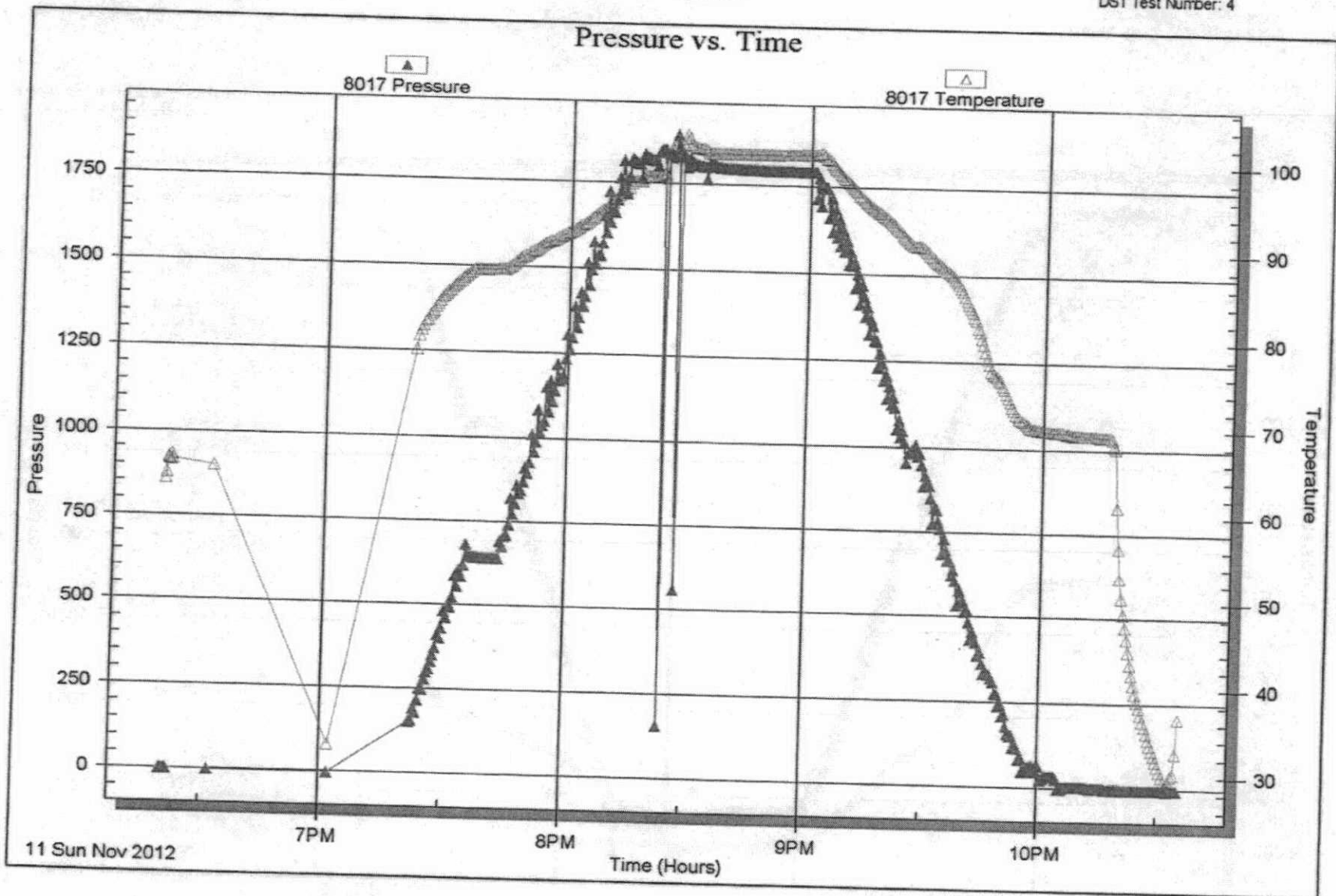
Serial #: 8017

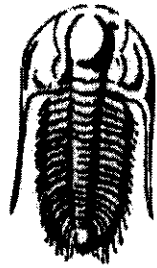
Inside

Jason Oil Co. LLC

Maier #1

DST Test Number: 4





**TRILOBITE
TESTING, INC.**

DRILL STEM TEST REPORT

Prepared For: **Jason Oil Co. LLC**
PO Box 701
Russell KS 67665+0701

ATTN: Jeff Lawler

Maier #1

4-8s-24w Graham,KS

Start Date: 2012.11.11 @ 22:32:05

End Date: 2012.11.12 @ 06:14:39

Job Ticket #: 50753 DST #: 5

Trilobite Testing, Inc
PO Box 362 Hays, KS 67601
ph: 785-625-4778 fax: 785-625-5620

Printed: 2012.11.20 @ 11:22:43

Jason Oil Co. LLC
4-8s-24w Graham,KS
Maier #1
DST # 5
LKC-J-K
2012.11.11



**TRILOBITE
TESTING, INC.**

DRILL STEM TEST REPORT

Jason Oil Co. LLC
PO Box 701
Russell KS 67665+0701
ATTN: Jeff Lawler

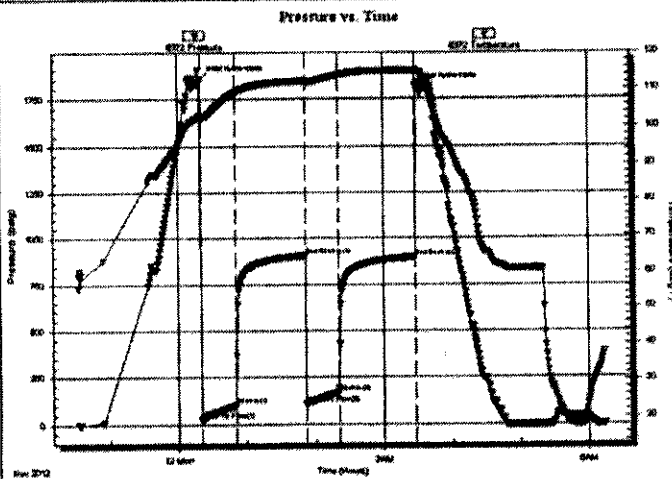
4-8s-24w Graham, KS
Maier #1
Job Ticket: 50753 DST#: 5
Test Start: 2012.11.11 @ 22:32:05

GENERAL INFORMATION:

Formation: LKC"J-K"
Deviated: No Whipstock: ft (KB)
Time Tool Opened: 00:20:30
Time Test Ended: 06:14:39
Test Type: Conventional Bottom Hole (Reset)
Tester: Andy Carreira
Unit No: 39
Interval: 3767.00 ft (KB) To 3810.00 ft (KB) (TVD)
Reference Elevations: 2360.00 ft (KB)
Total Depth: 3810.00 ft (KB) (TVD) 2352.00 ft (CF)
Hole Diameter: 7.88 inches Hole Condition: Fair KB to GR/CF: 8.00 ft

Serial #: 8372 Outside
Press@RunDepth: 168.27 psig @ 3774.00 ft (KB) Capacity: 8000.00 psig
Start Date: 2012.11.11 End Date: 2012.11.12 Last Calib.: 2012.11.12
Start Time: 22:32:05 End Time: 06:14:40 Time On Btm: 2012.11.12 @ 00:20:10
Time Off Btm: 2012.11.12 @ 03:28:09

TEST COMMENT: IF:(30min) BOB 10 min.
IS:(60min) Return surface blow.
FF:(30min) BOB 13 min.
FS:(60min) Return surface blow



PRESSURE SUMMARY

Time (Min.)	Pressure (psig)	Temp (deg F)	Annotation
0	1851.57	102.92	Initial Hydro-static
1	23.54	101.92	Open To Flow (1)
31	102.29	109.28	Shut-In(1)
92	906.47	112.30	End Shut-In(1)
92	107.75	112.02	Open To Flow (2)
121	168.27	113.85	Shut-In(2)
188	898.33	114.99	End Shut-In(2)
188	1806.82	115.23	Final Hydro-static

Recovery

Length (ft)	Description	Volume (bbl)
125.00	MW m=10% w=90%	1.49
65.00	GHOCMW g=20% o=25% m=20% w=35%	0.91
165.00	GO g=20% o=80%	2.31
0.00	GIP= 150 ft	0.00

* Recovery from multiple tests

Gas Rates

	Choke (inches)	Pressure (psig)	Gas Rate (Mcf/d)



**TRILOBITE
TESTING, INC.**

DRILL STEM TEST REPORT

TOOL DIAGRAM

Jason Oil Co. LLC
PO Box 701
Russell KS 67665+0701
ATTN: Jeff Lawler

4-8s-24w Graham, KS
Maier #1
Job Ticket: 50753 DST#: 5
Test Start: 2012.11.11 @ 22:32:05

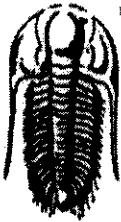
Tool Information

Drill Pipe:	Length: 3734.00 ft	Diameter: 3.80 inches	Volume: 52.38 bbl	Tool Weight: 2500.00 lb
Heavy Wt. Pipe:	Length: 0.00 ft	Diameter: 2.70 inches	Volume: 0.00 bbl	Weight set on Packer: 24000.00 lb
Drill Collar:	Length: 29.21 ft	Diameter: 2.25 inches	Volume: 0.14 bbl	Weight to Pull Loose: 54000.00 lb
			Total Volume: 52.52 bbl	Tool Chased 0.00 ft
Drill Pipe Above KB:	16.21 ft			String Weight: Initial 40000.00 lb
Depth to Top Packer:	3767.00 ft			Final 42000.00 lb
Depth to Bottom Packer:	ft			
Interval between Packers:	43.00 ft			
Tool Length:	63.00 ft			
Number of Packers:	2	Diameter: 6.75 inches		

Tool Comments:

Tool Description

Tool Description	Length (ft)	Serial No.	Position	Depth (ft)	Accum. Lengths
Change Over Sub	1.00			3748.00	
Shut In Tool	5.00			3753.00	
Hydraulic tool	5.00			3758.00	
Packer	5.00			3763.00	20.00 Bottom Of Top Packer
Packer	4.00			3767.00	
Stubb	1.00			3768.00	
Perforations	5.00			3773.00	
Change Over Sub	1.00			3774.00	
Recorder	0.00	8017	Inside	3774.00	
Recorder	0.00	8372	Outside	3774.00	
Drill Pipe	31.00			3805.00	
Change Over Sub	1.00			3806.00	
Perforations	1.00			3807.00	
Bullnose	3.00			3810.00	43.00 Bottom Packers & Anchor
Total Tool Length:	63.00				



**TRILOBITE
TESTING, INC**

DRILL STEM TEST REPORT

FLUID SUMMARY

Jason Oil Co. LLC

4-8s-24w Graham,KS

PO Box 701
Russell KS 67665+0701

Maier #1

Job Ticket: 50753

DST#: 5

ATTN: Jeff Lawler

Test Start: 2012.11.11 @ 22:32:05

Mud and Cushion Information

Mud Type: Gel Chem

Cushion Type:

Oil API:

deg API

Mud Weight: 9.00 lb/gal

Cushion Length:

ft

Water Salinity:

100000 ppm

Viscosity: 53.00 sec/qt

Cushion Volume:

bbbl

Water Loss: 7.96 in³

Gas Cushion Type:

Resistivity: ohm.m

Gas Cushion Pressure:

psig

Salinity: 1000.00 ppm

Filter Cake: inches

Recovery Information

Recovery Table

Length ft	Description	Volume bbl
125.00	MV m=10% w=90%	1.487
65.00	GHOCMV g=20% o=25% m=20% w=35%	0.912
165.00	GO g=20% o=80%	2.315
0.00	GIP= 150 ft	0.000

Total Length: 355.00 ft

Total Volume: 4.714 bbl

Num Fluid Samples: 0

Num Gas Bombs: 0

Serial #:

Laboratory Name:

Laboratory Location:

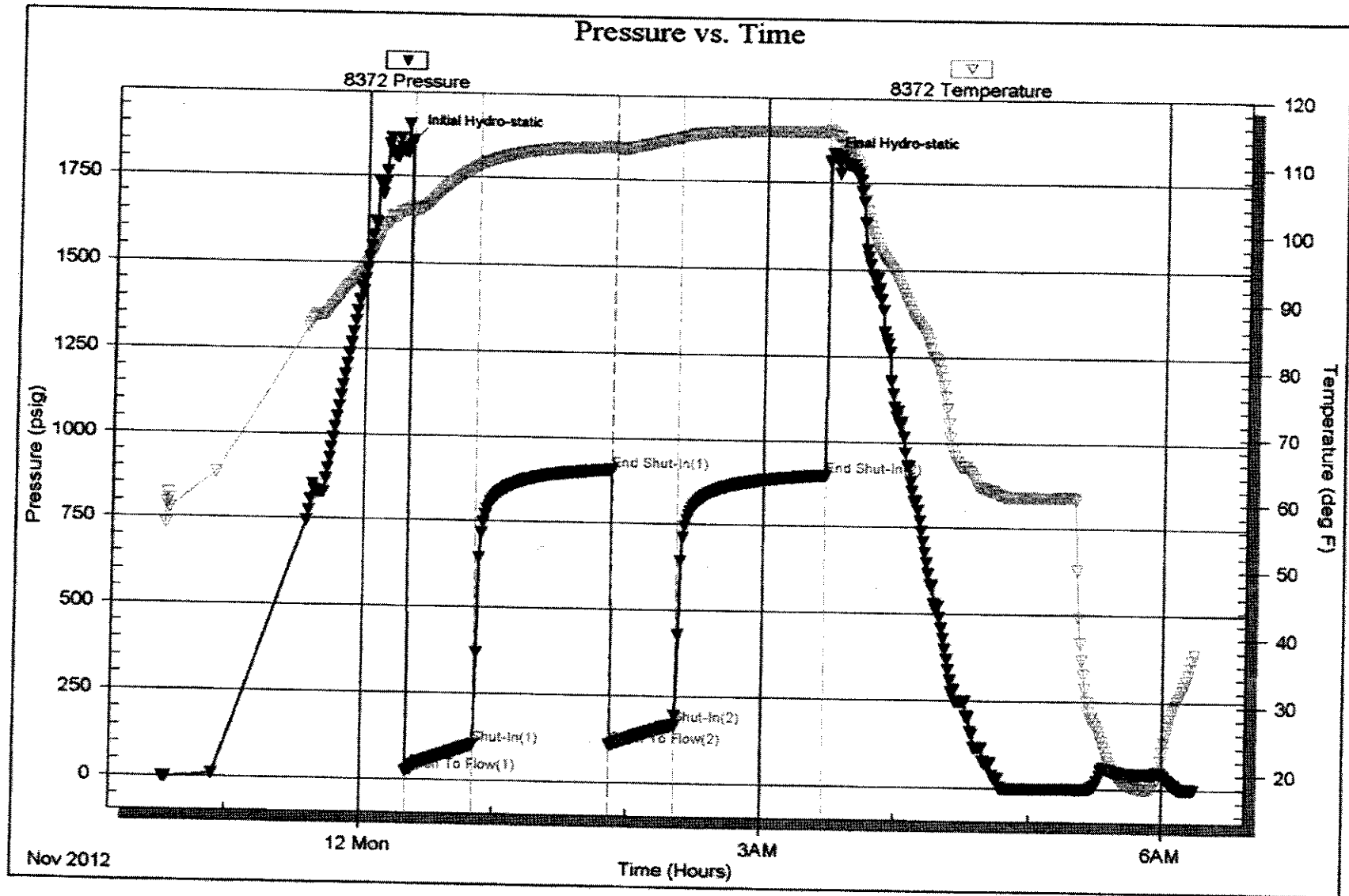
Recovery Comments:

Serial #: 8372

Outside Jason Oil Co. LLC

Master #1

DST Test Number: 5

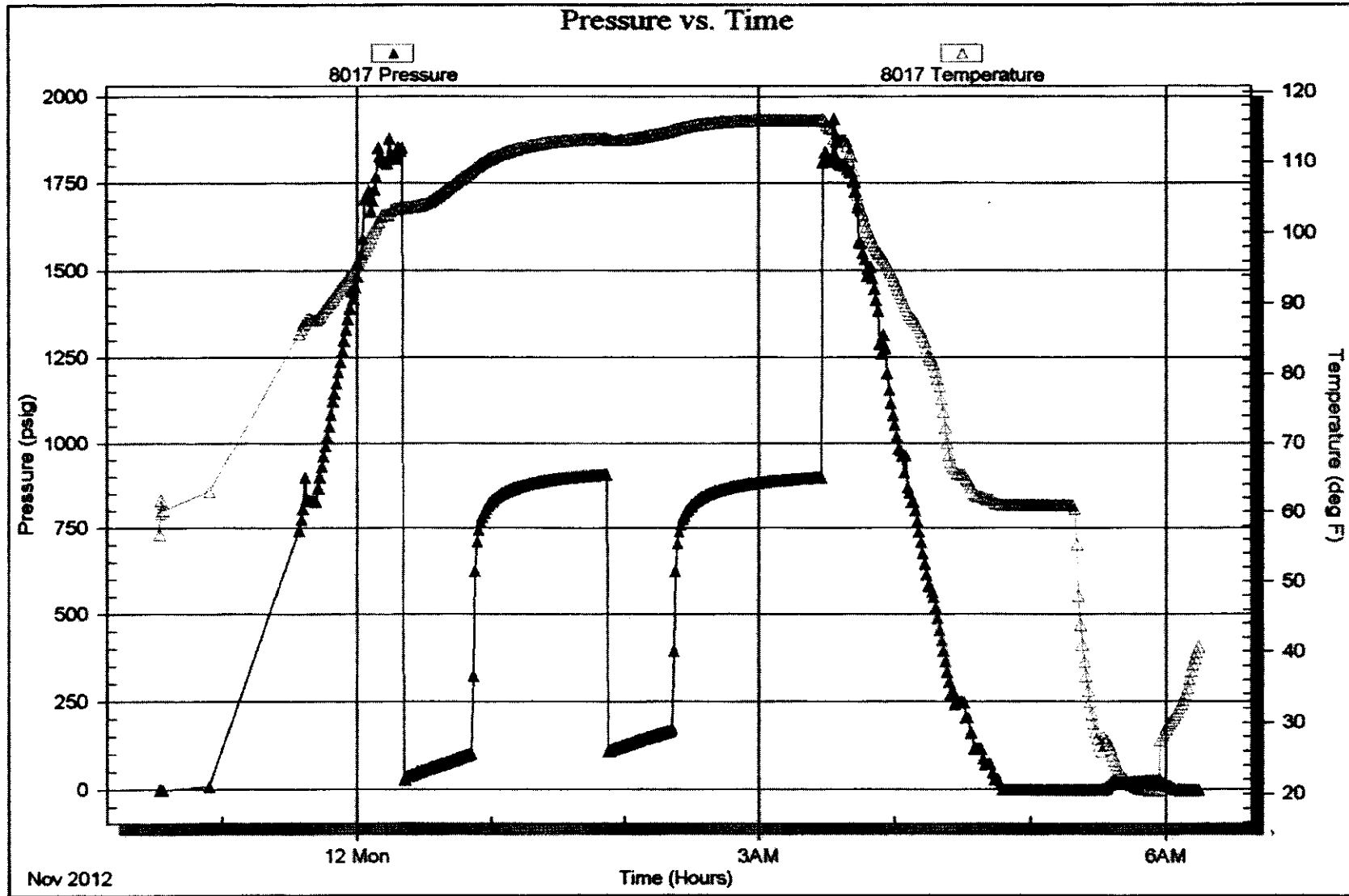


Serial #: 8017

Inside Jason Oil Co. LLC

Well #1

DST Test Number: 5





TRILOBITE TESTING INC.

P.O. Box 1733 • Hays, Kansas 67601

Test Ticket

NO. 49371

Well Name & No. Maize #1 Test No. 1 Date 11-9-12
 Company JASON Oil Co. LLC Elevation 2360 KB 2352 GL
 Address 3718 83rd St, PO Box 701 Russell KS 67665-0701
 Co. Rep / Geo. Jeff Lawler Rig Discovery #1
 Location: Sec. 4 Twp. 8S Rge. 24W Co. Beaumont State KS

Interval Tested 3527-3592 Zone Tested ORoad - PLATTSmouth
 Anchor Length 65 Drill Pipe Run 3483 Mud Wt. 8.6
 Top Packer Depth 3522 Drill Collars Run 29.21 Vis 52
 Bottom Packer Depth 3527 Wt. Pipe Run 0 WL 7.6
 Total Depth 3592 Chlorides 500 ppm System LCM 2#

Blow Description IF: 2" blow in 3min, 6" in 14min, Built to 10"
ISI: NO Return
FF: 2" blow in 5min, 6" in 18min. Built to 8"
FST: NO Return

Rec	Feet of	%gas	%oil	%water	%mud
<u>200</u>	<u>MW</u>			<u>70</u>	<u>30</u>
Rec	Feet of	%gas	%oil	%water	%mud
Rec	Feet of	%gas	%oil	%water	%mud
Rec	Feet of	%gas	%oil	%water	%mud
Rec	Feet of	%gas	%oil	%water	%mud

Rec Total 200 BHT 105° Gravity API RW, 28 @ 26 °F Chlorides 72000 ppm
 (A) Initial Hydrostatic 1742 Test 1150 T-On Location 17:50
 (B) First Initial Flow 16 Jars T-Started 18:51
 (C) First Final Flow 68 Safety Joint T-Open 20:45
 (D) Initial Shut-In 1132 Circ Sub T-Pulled 23:45
 (E) Second Initial Flow 70 Hourly Standby T-Out 01:22
 (F) Second Final Flow 108 Mileage 140PT 217 Comments _____
 (G) Final Shut-In 1110 Sampler Ruined Shale Packer
 (H) Final Hydrostatic 1693 Straddle Ruined Packer
 Shale Packer Extra Copies
 Extra Packer Extra Recorder
 Extra Recorder
 Day Standby
 Accessibility

Initial Open 30
 Initial Shut-In 60
 Final Flow 30
 Final Shut-In 60

Sub Total 1367 MP/DST Disc't
 Approved By _____ Our Representative [Signature]
 TriLOBITE TESTING INC. shall not be liable for damaged or any kind of the property or personnel of the one for whom a test is made, or for any loss suffered or sustained, directly or indirectly, through the use of its equipment, or its statements or opinion concerning the results of any test. Tools lost or damaged in the hole shall be paid for at cost by the party for whom the test is made.



TRILOBITE TESTING INC.

P.O. Box 1733 • Hays, Kansas 67601

Test Ticket

NO. 49373

Well Name & No. Maier #1 Test No. 2 Date 11-10-12
 Company JASON Oil CO LLC Elevation 2360 KB 2352 GL
 Address 3718 83rd St PO Box 701 Russell Ks. 67665-0701
 Co. Rep / Geo. Jeff Lawler Rig DISCOVERY 1
 Location: Sec. 4 Twp. 8S Rge. 24W Co. Graham State Ks

Interval Tested 3636-3678 Zone Tested LKC "C-D"
 Anchor Length 42' Drill Pipe Run 3607 Mud Wt. 8.6
 Top Packer Depth 3631 Drill Collars Run 29.21 Vis 52
 Bottom Packer Depth 3636 WL Pipe Run 0 WL 7.6
 Total Depth 3678 Chlorides 1000 ppm System LCM 2#

Blow Description IF: BOB 2min
ISI: NO Return
FF: BOB 3min
FSI: ~~NO~~ Return surface blow

Rec	Feet of	%gas	%oil	%water	%mud
25	Foot of GO	10%	90%		
40	Foot of GOC Wm	5%	10%	40%	45%
380	Foot of BOS MW	5%	3%	80%	12%
1005	Foot of MW		100%		Te

Rec Total 1450 BHT 114° Gravity 35 API RW 125 @ 73° F Chlorides 60000 ppm

(A) Initial Hydrostatic 1767 Test 1150 T-On Location 09:47
 (B) First Initial Flow 77 Jars _____ T-Started 10:30
 (C) First Final Flow 337 Safety Joint _____ T-Open 12:08
 (D) Initial Shut-In 1036 Circ Sub _____ T-Pulled 14:23
 (E) Second Initial Flow 346 Hourly Standby _____ T-Out 17:15
 (F) Second Final Flow 682 Mileage 140RT 217 Comments _____
 (G) Final Shut-In 1032 Sampler _____
 (H) Final Hydrostatic 1726 Straddle _____
 Shale Packer _____
 Ruined Shale Packer _____
 Ruined Packer _____
 Extra Copies _____

Initial Open 15
 Initial Shut-In 30
 Final Flow 30
 Final Shut-In 60
 Sub Total 0
 Total 1367
 MP/DST Disc't _____
 Sub Total 1367

Approved By _____ Our Representative Andy Co

TriLOBITE TESTING Inc. shall not be liable for damaged of any kind of the property or personnel of the one for whom a test is made, or for any loss suffered or sustained, directly or indirectly, through the use of its equipment, or its statements or opinion concerning the results of any test, tools lost or damaged in the hole shall be paid for at cost by the party for whom the test is made.



TRILOBITE TESTING INC.

P.O. Box 1733 • Hays, Kansas 67601

Test Ticket

NO. 49374

Well Name & No. MAIER #1 Test No. 3 Date 11-11-12
 Company JASON OIL CO LLC Elevation 2360 KB 2352 GL
 Address 3718 83rd St PO Box 701 Russell Ks 67665+0701
 Co. Rep / Geo. JEFF LAWLER Rig Discovery 1
 Location: Sec. 4 Twp. 8S Rge. 24W Co. Graham State Ks

Interval Tested 3724-3770 Zone Tested LKC "H-I"
 Anchor Length 46 Drill Pipe Run 3705 Mud Wt. 9.2
 Top Packer Depth 3719 Drill Collars Run 29.21 Vis 53
 Bottom Packer Depth 3724 Wl. Pipe Run 0 WL 8.0
 Total Depth 3770 Chlorides 1000 ppm System LCM 1.5^u

Blow Description IF: BOB 2min
ISI: NO RETURN
FF: BOB 4min
FSL: NO RETURN

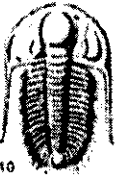
Rec	Feet of	%gas	%oil	%water	%mud
<u>1</u>	<u>CO</u>				
<u>785</u>	<u>MW</u>			<u>100</u>	<u>TR</u>
Rec	Feet of	%gas	%oil	%water	%mud
Rec	Feet of	%gas	%oil	%water	%mud
Rec	Feet of	%gas	%oil	%water	%mud

Rec Total ~~786~~ 786 BHT 114 Gravity .34 @ 33 °F Chlorides 43000 ppm

(A) Initial Hydrostatic <u>1830</u>	<input checked="" type="checkbox"/> Test <u>1150</u>	T-On Location <u>03:38</u>
(B) First Initial Flow <u>49</u>	<input type="checkbox"/> Jars	T-Started <u>04:22</u>
(C) First Final Flow <u>227</u>	<input type="checkbox"/> Safety Joint	T-Open <u>05:58</u>
(D) Initial Shut-In <u>469</u>	<input type="checkbox"/> Circ Sub	T-Pulled <u>08:13</u>
(E) Second Initial Flow <u>233</u>	<input type="checkbox"/> Hourly Standby	T-Out <u>10:21</u>
(F) Second Final Flow <u>376</u>	<input checked="" type="checkbox"/> Mileage <u>140RT</u> 217	Comments
(G) Final Shut-In <u>472</u>	<input type="checkbox"/> Sampler	
(H) Final Hydrostatic <u>1811</u>	<input type="checkbox"/> Straddle	<input type="checkbox"/> Ruined Shale Packer
Initial Open <u>15</u>	<input type="checkbox"/> Shale Packer	<input type="checkbox"/> Ruined Packer
Initial Shut-In <u>30</u>	<input type="checkbox"/> Extra Packer	<input type="checkbox"/> Extra Copies
Final Flow <u>30</u>	<input type="checkbox"/> Extra Recorder	Sub Total <u>0</u>
Final Shut-In <u>60</u>	<input type="checkbox"/> Day Standby	Total <u>1367</u>
	<input type="checkbox"/> Accessibility	MP/DST Disc't
	Sub Total <u>1367</u>	

Approved By _____ Our Representative [Signature]

TriLOBITE Testing Inc. shall not be liable for damaged of any kind of the property or personnel of the one for whom a test is made, or for any loss suffered or sustained, directly or indirectly, through the use of its equipment, or its statements or opinion concerning the results of any test, tools lost or damaged in the hole shall be paid for at cost by the party for whom the test is made.



TRILOBITE TESTING INC.

P.O. Box 1733 • Hays, Kansas 67601

Test Ticket

NO. 49375

Well Name & No. MAIER #1 Test No. 4 Date 11-11-12
 Company JASON Oil Co. LLC Elevation 2360 KB 2352 GL
 Address 3718 83rd St Po Box 701 Russell KS 67665 70701
 Co. Rep / Geo. JEFF LAWLER Rig DISCOVERY 1
 Location: Sec. 4 Twp. 85 Rge. 24W Co. Graham State KS

Interval Tested 3769-3810 Zone Tested LKC "J&K"
 Anchor Length 41 Drill Pipe Run 3735 Mud Wt. 9.2
 Top Packer Depth NONE Drill Collars Run 29:21 Vis 53
 Bottom Packer Depth 3769 Wt. Pipe Run 2 WL 8.0
 Total Depth 3810 Chlorides 1000 ppm System LCM 1.5

Blow Description IF MISRUN
IF Packer Failure!
FF
FSI

Rec	Feet of	%gas	%oil	%water	%mud
<u>100</u>	<u>Feet of Drilling Mud</u>				
Rec	Feet of	%gas	%oil	%water	%mud
Rec	Feet of	%gas	%oil	%water	%mud
Rec	Feet of	%gas	%oil	%water	%mud
Rec	Feet of	%gas	%oil	%water	%mud

Rec Total 100' BHT 99° Gravity _____ API RW _____ @ _____ F Chlorides _____ ppm

(A) Initial Hydrostatic 1845 Test 950 T-On Location 17:08
 (B) First Initial Flow _____ Jars _____ T-Started 18:30
 (C) First Final Flow _____ Safety Joint _____ T-Open _____
 (D) Initial Shut-In _____ Circ Sub _____ T-Pulled 20:15
 (E) Second Initial Flow _____ Hourly Standby _____ T-Out 22:08
 (F) Second Final Flow _____ Mileage 140ET 217 Comments RAN 1 PACKER -
 (G) Final Shut-In _____ Sampler _____ Geo requested.
 (H) Final Hydrostatic 1832 Straddle _____ Ruined Shale Packer _____
 Shale Packer _____ Ruined Packer _____
 Extra Packer _____ Extra Copies _____
 Extra Recorder _____ Sub Total 0
 Day Standby _____ Total 1167
 Accessibility _____ MP/DST Disc't _____
 Sub Total 1167

Initial Open _____
 Initial Shut-In _____
 Final Flow _____
 Final Shut-In _____

Approved By _____ Our Representative [Signature]
 Trilobite Testing Inc. shall not be liable for damaged of any kind of the property or personnel of the one for whom a test is made, or for any loss suffered or sustained, directly or indirectly, through the use of its equipment, or its statements or opinion concerning the results of any test, tools lost or damaged in the hole shall be paid for at cost by the party for whom the test is made.



TRILOBITE TESTING INC.

1515 Commerce Parkway • Hays, Kansas 67601

Test Ticket

NO. 50753

Well Name & No. MAIER #1 Test No. 5 Date 11-11-12
 Company JASON Oil LLC Elevation 2360 KB 2352 GL
 Address 3718 832d st PO Box 701 Russell Ks 67657 0701
 Co. Rep / Geo. Jeff Louisa Rig Discover #1
 Location: Sec. 4 Twp. 8S Rge. 24W Co. Graham State Ks

Interval Tested 3767-3810 Zone Tested LKC "J&K"
 Anchor Length 43' Drill Pipe Run 3734 Mud Wt. 9.2
 Top Packer Depth 3762 Drill Collars Run 29.21 Vis 53
 Bottom Packer Depth 3767 Wt. Pipe Run 0 WL 8.0
 Total Depth 3810 Chlorides 1000 ppm System LCM 1.5

Blow Description IF: BOB 10 min
ISI: ~~10 min~~ Return surface blow
FF: BOB 13 min
FSD: Return surface blow

Rec	Feet of	%gas	%oil	%water	%mud
<u>165</u>	<u>60</u>	<u>20</u>	<u>80</u>		
<u>65</u>	<u>GHAC MW</u>	<u>20</u>	<u>25</u>	<u>35</u>	<u>20</u>
<u>125</u>	<u>MW</u>			<u>90</u>	<u>10</u>
<u>150</u>	<u>GIP</u>				

Ruc Total 355' BHT 114° Gravity 33 API RW .34 @ 20 °F Chlorides 100,000 ppm

(A) Initial Hydrostatic 1851 Test 1150 T On Location _____
 (B) First Initial Flow 23 Jars T-Started 22:32
 (C) First Final Flow 102 Safety Joint T-Open 00:21
 (D) Initial Shut-In 906 Circ Sub T-Pulled 03:21
 (E) Second Initial Flow 107 Hourly Standby T-Out 06:15
 (F) Second Final Flow 168 Mileage _____
 (G) Final Shut-In 898 Sampler _____
 (H) Final Hydrostatic 1806 Straddle _____
 Ruined Shale Packer
 Ruined Packer
 Extra Copies
 Initial Open 30 Shale Packer _____
 Initial Shut-In 60 Extra Packer _____
 Final Flow 30 Extra Recorder _____
 Final Shut-In 60 Day Standby _____
 Accessibility _____
 Sub Total 1150 MP/ST Disc't _____

Approved By _____ Our Representative Orsky Co

TriLOBITE TESTING INC. shall not be liable for damaged of any kind of the property or personnel of the one for whom a test is made, or for any loss suffered or sustained, directly or indirectly, through the use of its equipment, or its statements or opinion concerning the results of any test, tools lost or damaged in the hole shall be paid for at cost by the party for whom the test is made.



QUALITY OILWELL CEMENTING, INC.
 PO Box 32 - 740 WEST WICHITA AVE, RUSSELL KS 67665
 PHONE: 785-324-1041 FAX: 785-483-1087
 EMAIL: cementing@ruraltel.net

Date: 11/18/2012
 Invoice # 6202

P.O.#:
 Due Date: 12/18/2012
 Division: Russell

Invoice

Contact:
 Jason Oil Company
Address/Job Location:
 Jason Oil Company
 P.O. BOX 701
 Russell Ks 67665

Reference:
 MAIER 1-1

Description of Work:
 PROD LONG STRING

Services / Items Included:	Quantity	Price	Taxable	Item	Quantity	Price	Taxable
Labor		\$ 991.39	No				
Cement Port Collar, 5 1/2"	1	\$ 2,714.29	Yes				
Common-Class A	175	\$ 2,382.60	Yes				
Gilsonite	875	\$ 1,425.00	Yes				
5 1/2" Basket	2	\$ 499.43	Yes				
Bulk Truck Matl-Material Service Charge	199	\$ 432.11	No				
Mud Clear	500	\$ 401.71	Yes				
Auto Fill Float Shoe, 5 1/2"	1	\$ 332.23	Yes				
5 1/2" Turbolizer	5	\$ 314.86	Yes				
Pump Truck Mileage-Job to Nearest Camp	28	\$ 303.39	No	Bulk Truck Mileage-Job to Nearest Bulk Plant	28	\$177.54	No
Latch Down Plug & Baffle, 5 1/2"	1	\$ 243.20	Yes				

Invoice Terms:

Net 30

SubTotal: \$ 10,445.09

Discount Available ONLY if Invoice is Paid & Received within listed terms of invoice: \$ (1,566.76)

SubTotal for Taxable Items:	\$ 7,259.56
SubTotal for Non-Taxable Items:	\$ 1,618.77
Total:	\$ 8,878.33
Tax:	\$ 548.10

7.55% Graham County Sales Tax

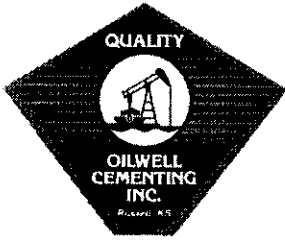
Thank You For Your Business!

Amount Due: \$ 9,426.43

Applied Payments:

Balance Due: \$ 9,426.43

Past Due Invoices are subject to a service charge (annual rate of 24%)
 This does not include any applicable taxes unless it is listed.
 ©2008-2013 Straker Investments, LLC. All rights reserved.



QUALITY OILWELL CEMENTING, INC.
 PO Box 32 - 740 WEST WICHITA AVE, RUSSELL KS 67665
 PHONE:785-324-1041 FAX:785-483-1087
 EMAIL: cementing@ruraltel.net

Date: 11/8/2012
 Invoice # 6166
 P.O.#:
 Due Date: 12/8/2012
 Division: Russell

Invoice

Contact:
 Jason Oil Company
Address/Job Location:
 Jason Oil Company
 P.O. BOX 701
 Russell Ks 67665

Reference:
 MAIER 1

Description of Work:
 SURFACE JOB

Services / Items Included:	Quantity	Price	Taxable	Item	Quantity	Price	Taxable
Labor		\$ 991.39	No				
Common-Class A	150	\$ 2,042.23	Yes				
Bulk Truck Matl-Material Service Charge	158	\$ 343.09	No				
Pump Truck Mileage-Job to Nearest Camp	28	\$ 303.39	No				
Calcium Chloride	5	\$ 258.73	Yes				
Bulk Truck Mileage-Job to Nearest Bulk Plant	28	\$ 177.54	No				
Premium Gel (Bentonite)	3	\$ 53.03	Yes				

Invoice Terms:

Net 30

SubTotal: \$ 4,169.38
 Discount Available ONLY if Invoice is Paid & Received
 within listed terms of invoice: \$ (625.41)

SubTotal for Taxable Items: \$ 2,000.88
 SubTotal for Non-Taxable Items: \$ 1,543.09

7.55% Graham County Sales Tax

Total: \$ 3,543.97
 Tax: \$ 151.07

Thank You For Your Business!

Amount Due: \$ 3,695.04
Applied Payments:
Balance Due: \$ 3,695.04

Past Due Invoices are subject to a service charge (annual rate of 24%)
 This does not include any applicable taxes unless it is listed.
 ©2008-2013 Straker Investments, LLC. All rights reserved.



QUALITY OILWELL CEMENTING, INC.
 PO Box 32 - 740 WEST WICHITA AVE, RUSSELL KS 67665
 PHONE:785-324-1041 FAX:785-483-1087
 EMAIL: cementing@ruraltel.net

Date: 1/2/2013
 Invoice # 6119

P.O.#:
 Due Date: 2/1/2013
 Division: Russell

Invoice

Contact:

Jason Oil Company
 Address/Job Location:
 Jason Oil Company
 P.O. BOX 701
 Russell Ks 67665

Reference:

MAIER 1-1

Description of Work:

PORT COLLAR JOB

Services / Items Included:

	Quantity	Price	Taxable	Item	Quantity	Price	Taxable
Labor		\$ 991.39	No				
non, MetsoBeads, Plater, Gel, FloSeal, Calcium)	250	\$ 5,189.71	Yes				
Bulk Truck Matl-Material Service Charge	400	\$ 868.57	No				
Flo Seal	200	\$ 434.29	Yes				
Pump Truck Mileage-Job to Nearest Camp	28	\$ 303.39	No				
Bulk Truck Mileage-Job to Nearest Bulk Plant	28	\$ 177.54	No				

Invoice Terms:

Net 30

	SubTotal: \$	7,964.89
	Discount Available <u>ONLY</u> if Invoice is Paid & Received within listed terms of invoice:	\$ (1,194.73)
<hr/>		
	SubTotal for Taxable Items: \$	4,780.40
	SubTotal for Non-Taxable Items: \$	1,989.75
<hr/>		
	Total: \$	6,770.16
	Tax: \$	360.92
	Amount Due: \$	7,131.08
	Applied Payments:	
	Balance Due: \$	7,131.08

7.55% Graham County Sales Tax

Thank You For Your Business!

Past Due Invoices are subject to a service charge (annual rate of 24%)
 This does not include any applicable taxes unless it is listed.
 ©2008-2013 Straker Investments, LLC. All rights reserved.