

1 120216

1-31

256  
R

To: STATE CORPORATION COMMISSION  
CONSERVATION DIVISION - PLUGGING SECTION  
200 COLORADO DERBY BUILDING  
WICHITA, KANSAS 67202

API NUMBER 15-165-21,255-0000

E/2 NW SW, SEC. 25, T 18 S, R 16 W/4E

1980 feet from S section line

4290 feet from E section line

TECHNICIAN'S PLUGGING REPORT

Operator License # 5205

Lease Name Lebsack Well # 1

Operator: Mid-Continent Energy Corporation  
Name &

County Rush 116.68

Address 155 North Market, Suite 200  
Wichita, KS 67202

Well Total Depth 3590 feet

Conductor Pipe: Size \_\_\_\_\_ feet

Surface Casing: Size 8 5/8 feet 963

Abandoned Oil Well  Gas Well \_\_\_\_\_ Input Well \_\_\_\_\_ SWD Well \_\_\_\_\_ D&A \_\_\_\_\_

Other well as hereinafter indicated \_\_\_\_\_

Plugging Contractor Great Bend Casing Pullers, Inc. License Number 4635

Address Box 768, Great Bend, KS 67530

Company to plug at: Hour: 8:30 a.m. Day: 31 Month: 1 Year: 1989

Plugging proposal received from Gary Burke

(company name) Great Bend Casing Pullers, Inc. (phone) 316-793-9711

were: 5 1/2" at 3589' Perfs at 3514-52' (2 sets) Elevation 1933' GL

1st plug sand back to 3490' and dump 5 sx cement on top of sand through bailer,

2nd plug pump 3 sx hulls, 10 sx gel, 50 sx cement, 10 sx gel, 1 sx hulls, release 8 5/8"

wiper plug and pump 125 sx cement.

RECEIVED  
STATE CORPORATION COMMISSION

2-3-89

5 1989

Plugging Proposal Received by Paul Luthi (TECHNICIAN)

Plugging Operations attended by Agent?: All  Part \_\_\_\_\_ None \_\_\_\_\_ CONSERVATION DIVISION  
Wichita, Kansas

Operations Completed: Hour: 10 a.m. Day: 31 Month: 1 Year: 1989

ACTUAL PLUGGING REPORT 1st plug sanded 5 1/2" casing back to 3490' and dumped 5 sx cement

on top of sand through bailer,

2nd plug pumped into 8 5/8" surface casing with 350 lbs. hulls, 10 sx gel, 50 sx cement,

10 sx gel, 150 lbs. hulls, and 125 sx cement.

Hole flowed slightly due to apparent hole in the 8 5/8".

Pumping pressure 0-950 psi and shut in 900 psi.

Remarks: Used 60/40 Pozmix 6% gel by B.J. Titan. Recovered 1980' of 5 1/2" casing.

(If additional description is necessary, use BACK of this form.)

INVOICED observe this plugging.

Signed Paul Luthi  
(TECHNICIAN)

DATE 2-7-89

CV. NO. 23880

15-165-2755-0000

# GEARHART

## CEMENT BOND LOG

FILING NO.	COMPANY <u>MID-CONTINENT ENERGY CORPORATION</u>	
	WELL <u>LEWIS NO.</u>	
	FIELD <u>WISCONSIN</u>	
	COUNTY <u>WELL</u>	STATE <u>KANSAS</u>
LOCATION	Other Services <u>NONE</u>	
SEC <u>25</u>	TWP <u>10S</u>	RGE <u>16W</u>

Permanent Datum <u>GI</u>	Elev. <u>1933</u>	Elev. K.B. <u>1938</u>
Log Measured from <u>KD</u>	<u>5</u> Ft. Above Permanent Datum	D.F. <u>-</u>
Drilling Measured from <u>KD</u>		G.I. <u>1933</u>

Date	<u>1-5-89</u>	Type Fluid in Hole	<u>Water</u>			
Run No.	<u>0116</u>	Dens.	<u>-</u>			
Depth-Driller	<u>2590</u>	Max. Rec. Temp.	<u>-</u>			
Depth-Logger	<u>2560</u>	Est. Cement Top	<u>2750</u>			
Btm. Log Interval	<u>2552</u>	Equip. Location	<u>7228 GI Bend</u>			
Top Log Interval	<u>2502</u>	Recorded By	<u>Flynn</u>			
Open Hole Size	<u>7 7/8"</u>	Witnessed By	<u>Mr. Cline</u>			
CASING REC.	Size	Wt/Ft	Grade	Type Joint	Top	Bottom
Surface String	<u>5 1/2"</u>				Surface	<u>963</u>
Prot. String						
Prod. String	<u>5 1/2"</u>				Surface	<u>ID</u>
Liner						

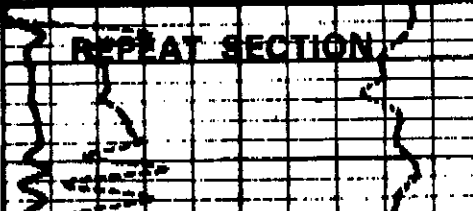
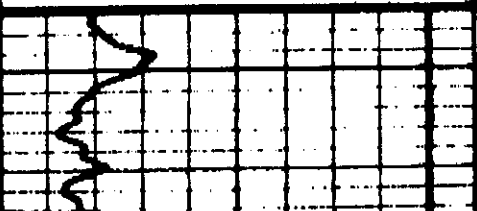
PRIMARY CEMENTING DATA				
STRING	Surface	Protection	Production	Liner
Vol. of Cement				
Type of Cement				
Additive				
Additive by %				
Retarder				
Retarder by %				
Wt of Slurry				
Water Loss				
Drill. Mud Type				
Drilling Mud Wt				

RECEIVED  
 CONSERVATION DIVISION  
 1-24-89  
 JAN 24 1989

CONSERVATION DIVISION  
 Wichita, Kansas

-500	CCL	500
0	GR API	150

0	AMPLITUDE-MV	75
---	--------------	----



BOND EQUIPMENT DATA		PRIMARY CEMENTING PROCEDURE	
Tool No.	<u>590</u>	Hour	
Tool Type	<u>Comb</u>	Date	
Tool Size	<u>3 1/4"</u>		
Type	<u>Box Spring</u>	Started Pumping Cement	
No.	<u>2</u>	Plug on Bottom	
Position	<u>Log &amp; Bottom</u>	Release Pressure	
Transmitter to Receiver Spacing		Finish Cementing Operation	
Seismic Spectrum		Start Cement Bond Log	
Amplitude	<u>3'</u>	Finish Cement Bond Log	
Travel Time	<u>5'</u>		

GAMMA RAY EQUIPMENT & LOGGING DATA

Tool No. | CCL | GR API | AMPLITUDE-MV | Gamma | T.C. | Abs. | Cal. | 7mm | Ani Per