

RECEIVED
SEP 14 1937
9-14-37
BY _____

TO
STATE CORPORATION COMMISSION
CONSERVATION DIVISION
800 Bitting Building
Wichita, Kansas

File 105-13

Location NEc NE 1/4

Sec. 30 Twp. 19 Rge. 16W

I have today completed supervision of plugging of:

Well No. _____ Lease Hugerman
Operator Westgate-Greeland Oil Co. Address 4706 Broadway K. C. Mo.
Field _____ County Rush
Total Depth 4030 Feet.

PLUGGING
FILE SEC 20 T 19 R 16W
BOOK PAGE 105 LINE 13

(Describe briefly the manner in which well was plugged)

Hole filled with heavy rotary mud from
4030 to 493 ft and hole bridged at 493 ft and a
15 ft cement plug set on bridge and hole filled
with mud to 30 ft and a cement plug set
on top of surface pipe at bottom of well.

Expense incurred as follows:

Date 8-30-37 *Day _____ Mileage 20
Date 9-2-37 *Day _____ Mileage 20
Date 9-13-37 *Day _____ Mileage 30
Hotel, meals, etc. \$ _____ 70

*Show as 1/4, 2/4, 3/4, or 4/4.

B. T. Alexander
Conservation Agent

P. O. GT Bend Date 9-13-37

15-165-01926-0000
WESTGATE-GREENLAND OIL COMPANY

4706 BROADWAY

KANSAS CITY, MISSOURI

September 8, 1937

State Corporation Commission

ADDRESS **800 Bitting Bldg., Wichita, Kansas**

ATTACHED PLEASE FIND CHECK No. 3088

TO COVER

Plugging assessment, ~~Hobbsman~~ #1, NEc NE 20-19-16W

Rush County, File 105-13:

\$25.00

RECEIVED
SEP 11 1937
9-11-37 *aa*

15-165-01926-0000

ERNEST E. BLINCOE, CHAIRMAN
HOMER HOCH
E. R. SLOAN
COMMISSIONERS

PHONES 2-0488—L. D. 78

E. G. DAHLGREN, DIRECTOR, WICHITA
MARVIN LEE, TECHNICAL ADVISER



LEO R. PRICE, SECRETARY
INNIS D. HARRIS, ATTORNEY

801 HARRISON
TOPEKA, KANSAS

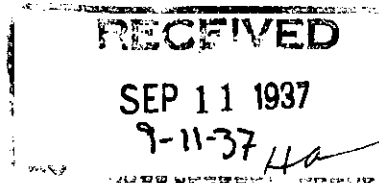
STATE OF KANSAS
STATE CORPORATION COMMISSION
CONSERVATION DIVISION
800 BITTING BUILDING
WICHITA, KANSAS

IN REPLY PLEASE
REFER TO THIS
SUBJECT

September 3, 1937

A. H. Parks

Westgate-Greenland Oil Co.
311 Walcott Building
Hutchinson, Kansas



IN ACCOUNT WITH Conservation Division, State Corporation Commission
Wichita, Kansas

WE Charge YOU

Plugging Assessment..... \$25.00

Well No. 1
Farm Hagerman
Description NE 1/4 NE 1/4 20-19-16W
County Rush
File 105-13

pd.
9/11/37
Ha

The assessment for the plugging of all wells is one cent per foot, with a maximum of \$25.00 and a minimum of \$5.00.

This assessment will be past due October 1, 1937.

TRJ:ha

PLEASE RETURN ONE COPY WITH REMITTANCE

15-165-01926-0000

ERNEST E. BLINCOE, CHAIRMAN
HOMER HOCH
E. R. SLOAN
COMMISSIONERS

PHONES 2-0488—L. D. 78

E. G. DAHLGREN, DIRECTOR, WICHITA
MARVIN LEE, TECHNICAL ADVISER



LEO R. PRICE, SECRETARY
INNIS D. HARRIS, ATTORNEY

901 HARRISON
TOPEKA, KANSAS

STATE OF KANSAS
STATE CORPORATION COMMISSION
CONSERVATION DIVISION
800 BITTING BUILDING
WICHITA, KANSAS

IN REPLY PLEASE
REFER TO THIS
SUBJECT

September 9, 1937

A. H. Parks

Westgate-Greenland Oil Co.
311 Walcott Building
Hutchinson, Kansas

IN ACCOUNT WITH Conservation Division, State Corporation Commission
Wichita, Kansas

WE Charge YOU

\$25.00

Plugging Assessment.....

Well No. **1**
Farm **Hagerman**
Description **NE 1/4 Sec 20-19-16W**
County **Rush**
File **105-13**

The assessment for the plugging of all wells is one cent per foot,
with a maximum of \$25.00 and a minimum of \$5.00.

This assessment will be past due October 1, 1937.

TRJ:ha

PLEASE RETURN ONE COPY WITH REMITTANCE

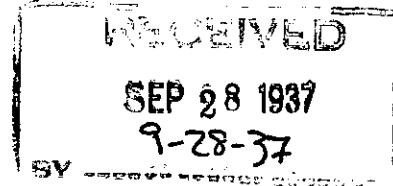
15-165-01926-0000

MATTISON AND DAVEY
ACCOUNTANTS AND AUDITORS
1510 FIDELITY BANK BUILDING
KANSAS CITY, MO.

NEW YORK
LOS ANGELES
KANSAS CITY

TULSA
HOUSTON
DALLAS
SHREVEPORT

Sept. 27, 1937



Kansas Corporation Commission
800 Bitting Bldg.
Wichita, Kansas
Gentlemen:

In connection with certain accounting work upon which we are
at present engaged for..... Westgate-Greenland Oil Company

.....
we request you to kindly furnish us with an itemized statement
showing \$25.00 indebtedness to you at the close of business
August 31, 1937, on open accounts, notes, trade
acceptances, or otherwise.

The courtesy of your prompt attention to this matter will be
greatly appreciated.

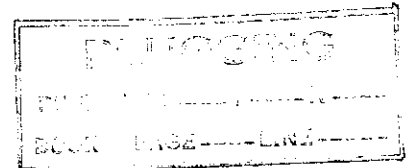
Very truly yours,

Mattison and Davey.

By John R. Riders

Request approved:
WESTGATE-GREENLAND OIL COMPANY

By Charles Stewart



Return envelope is inclosed.

September 29, 1937

Mattison and Davey
1510 Fidelity Bank Bldg.
Kansas City, Missouri

Dear Sirs:

We are enclosing copy of invoice sent to the Westgate-Greenland Oil Company, which you requested in your letter of September 27th. This assessment was paid September 11, 1937.

Yours very truly,

STATE CORPORATION COMMISSION
CONSERVATION DIVISION

HA BY T. R. JOHNS
PLUGGING SUPERVISOR

15-165-01926-0000

ERNEST E. BLINCOE, CHAIRMAN
HOMER HOCH
E. R. SLOAN
COMMISSIONERS

PHONES 2-0488—L. D. 78

E. G. DAHLGREN, DIRECTOR, WICHITA
MARVIN LEE, TECHNICAL ADVISER



LEO R. PRICE, SECRETARY
INNIS D. HARRIS, ATTORNEY

STATE OF KANSAS
STATE CORPORATION COMMISSION
CONSERVATION DIVISION
800 BITTING BUILDING
WICHITA, KANSAS

801 HARRISON
TOPEKA, KANSAS

IN REPLY PLEASE
REFER TO THIS
SUBJECT

September 3, 1937

Westgate-Greenland Oil Co.
311 Wolcott Building
Hutchinson, Kansas

C O P Y

Att'n: A. H. Parks

IN ACCOUNT WITH Conservation Division, State Corporation Commission
Wichita, Kansas

WE Charge YOU

Plugging Assessment..... \$25.00

Well No. 1
Farm Hagerman
Description NE 1/4 NE 1/4 20-19-16W
County Rush
File 105-13

The assessment for the plugging of all wells is one cent per foot,
with a maximum of \$25.00 and a minimum of \$5.00.

This assessment will be past due October 1, 1937.

TRJ:ha

PLEASE RETURN ONE COPY WITH REMITTANCE