

NOTICE OF INTENTION TO DRILL

G-1

TYPE

**TO BE FILED WITH THE STATE CORPORATION COMMISSION
PRIOR TO COMMENCEMENT OF WELL**

K-165-01637-00-01

API Number

OWVO
(For office use only)

1. Operator ET AL, INC.

Starting Date November 18, 1974

Address 119 Cameron Bldg., Okla City, Okla. 73106

County Rush

2. Contractor Chase Well Service, Inc.

Sec 34 Twp 17 S Rge 17W ^E_W

Address 5221 Ridgeway, Great Bend, Kansas 67530

Spot Location SE-SE-NE

3. Type of Equipment: Rotary _____ Cable Tool X

Nearest Lease Line 330 ft.

4. Well to be Drilled for: Oil _____ Gas X Reenter _____

Lease Name Lohrey

Disposal _____ Input _____ Other _____

5. Depth of Deepest Fresh Water within 1 mile _____ ft.

6. Depth of Municipal Water Well within 3 miles _____ ft.

Well No. 1

7. Depth to Protect all Fresh Water _____ ft.

8. Amount of Surface Casing ~~set~~ 1097 ft.

Est. Total Depth 3582 ft.

9. Alternate No. 1 X No. 2 _____

REMARKS: Was Aylward Drilling Co.
#1 Lohrey B, Plugged 3/21/60

OPERATOR STATES THAT HE WILL COMPLY WITH K. S. A. 55-128

ET AL, INC.

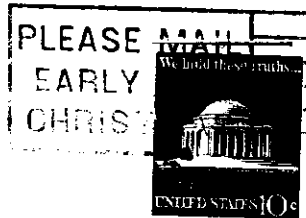
Signature of Operator

By: [Signature]
President

[Signature]



RECEIVED
STATE CORPORATION COMMISSION



NOV 15 1974

CONSERVATION DIVISION
Wichita, Kansas

State Corporation Commission of Kansas
Conservation Division
P. O. Box 17027
Wichita, Kansas 67217

RECEIVED
STATE CORPORATION COMMISSION
11-15-74
NOV 15 1974
CONSERVATION DIVISION
Wichita, Kansas

(IF PREFERRED, MAIL IN ENVELOPE)