

This form shall be filed in duplicate with the Kansas Corporation Commission, 200 Colorado Derby Building, Wichita, Kansas 67202, within ten days after the completion of the well, regardless of how the well was completed.

Attach separate letter of request if the information is to be held confidential. If confidential, only file one copy. Information on side one will be of public record and side two will then be held confidential.

Circle one: Oil, Gas, Dry, (SWD) OWWO, Injection. Type and complete ALL sections. Applications must be filed for dual completion, commingling, SWD and injection, T.A.

Attach wireline logs (i.e. electrical log, sonic log, gamma ray neutron log, etc.). KCC # (316) 263-3238. (Rules 82-2-105 & 82-2-125)

OPERATOR Thunderbird Drilling, Inc.

API NO. 15-101-20,636-0000

ADDRESS P.O. Box 18407

COUNTY Lane

Wichita, Kansas 67218

FIELD JENNISON

**CONTACT PERSON Gloria DeJesus

PROD. FORMATION

PHONE (316) 685-1441

LEASE Richards #1 SWD

PURCHASER

WELL NO. 1

ADDRESS

WELL LOCATION C S/2 SE NE

DRILLING Contractor Thunderbird Drilling, Inc.

660 Ft. from East Line and

CONTRACTOR

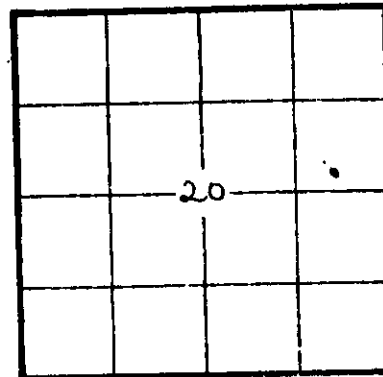
330 Ft. from South Line of

ADDRESS Same

the NE/4 SEC. 20 TWP. 16S RGE. 29W

PLUGGING CONTRACTOR

WELL PLAT



KCC / KCS (Office Use)

ADDRESS

TOTAL DEPTH 2143' PBD

SPUD DATE 3/11/82 DATE COMPLETED 3/20/82

ELEV: GR DF KB

DRILLED WITH (ROCK) (ROTARY) (TOOLS)

Amount of surface pipe set and cemented 324' w/240 sx DV Tool Used?

AFFIDAVIT

STATE OF KANSAS, COUNTY OF SEDGWICK SS, I,

Burke Krueger OF LAWFUL AGE, BEING FIRST DULY SWORN UPON HIS OATH,

DEPOSES THAT HE IS Vice-President (FOR)(OF) Thunderbird Drilling, Inc.

OPERATOR OF THE Richards #1 SWD LEASE, AND IS DULY AUTHORIZED TO MAKE

THIS AFFIDAVIT FOR AND ON THE BEHALF OF SAID OPERATOR, THAT WELL NO. 1 ON

RECEIVED STATE COMMISSION

STATE OF KANSAS HAS BEEN COMPLETED AS OF THE 26th DAY OF April, 19 82, AND THAT

ALL INFORMATION ENTERED HEREIN WITH RESPECT TO SAID WELL IS TRUE AND CORRECT.

SAITH NOT.

Wichita, Kansas

(S) [Signature]

NOTARY PUBLIC GLORIA DEJESUS Sedgwick County, Ks.

BEFORE ME THIS 26th DAY OF April, 19 82.

[Signature] NOTARY PUBLIC

MY COMMISSION EXPIRES: 3-25-84

**The person who can be reached by phone regarding any questions concerning this information. Within 45 days of completion, a witnessed initial test by the Commission is required if the well produces more than 25 BOPD or is located in a Basic Order Pool.

SIDE TWO

WELL LOG

Show all important zones of porosity and contents thereof; cored intervals, and all drill-stem tests, including depth interval tested, cushion used, time tool open, flowing and shut-in pressures, and recoveries.

SHOW GEOLOGICAL MARKERS, LOGS RUN., OR OTHER DESCRIPTIVE INFORMATION.

| FORMATION DESCRIPTION, CONTENTS, ETC. | TOP | BOTTOM | NAME | DEPTH |
|---------------------------------------|------|--------|------|-------|
| Surface hole | 0 | 25 | | |
| Sand & Shale | 25 | 324 | | |
| Shale | 324 | 690 | | |
| Shale & Sand | 690 | 1535 | | |
| Shale & Shells | 1535 | 1610 | | |
| Blaine | 1610 | 1618 | | |
| Shale W/snd strks | 1618 | 1950 | | |
| Shale | 1950 | 2140 | | |
| Anhydrite | 2140 | 2143 | | |
| 2143 | T.D. | | | |

Report of all strings set — surface, intermediate, production, etc. CASING RECORD (New) or (Used)

| Purpose of string | Size hole drilled | Size casing set (in O.D.) | Weight lbs/ft. | Setting depth | Type cement | Sacks | Type and percent additives |
|-------------------|-------------------|---------------------------|----------------|---------------|-------------|-------|----------------------------|
| Surface | 12 1/4 | 8 5/8" | 24# | 324' | com | 240 | 2% gel, 3% cc. |
| Prod. | | 5 1/2" | 14# | 2018' | | 375 | |
| | | | | | | | |
| | | | | | | | |

LINER RECORD

PERFORATION RECORD

| Top, ft. | Bottom, ft. | Sacks cement | Shots per ft. | Size & type | Depth interval |
|----------|-------------|--------------|---------------|-------------|----------------|
| | | | | | 1698-1874 |

| TUBING RECORD | | |
|---------------|---------------|---------------|
| Size | Setting depth | Packer set at |
| | | |

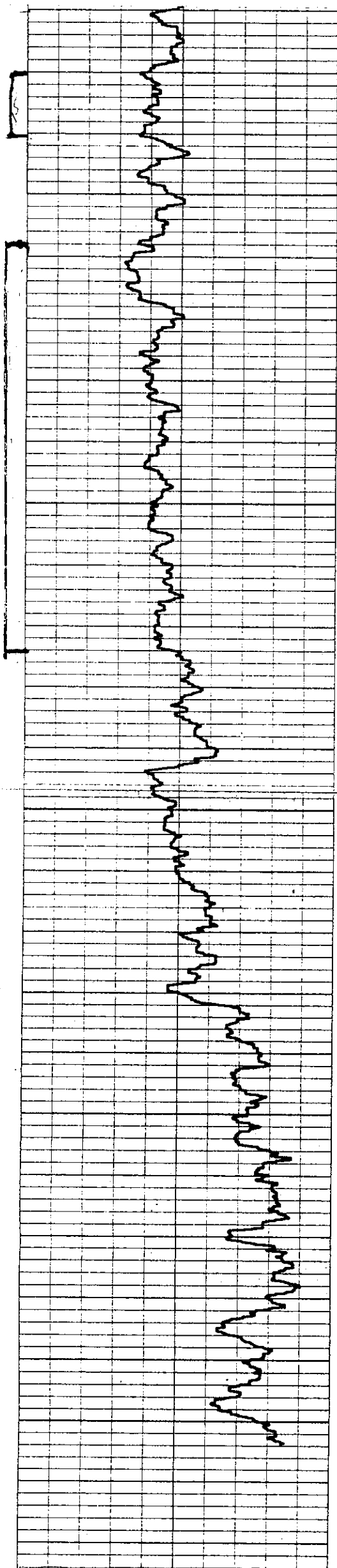
ACID, FRACTURE, SHOT, CEMENT SQUEEZE RECORD

| Amount and kind of material used | Depth interval treated |
|----------------------------------|------------------------|
| | |
| | |
| | |

| | | |
|--------------------------|---|---------|
| Date of first production | Producing method (flowing, pumping, gas lift, etc.) | Gravity |
|--------------------------|---|---------|

| | | | | | |
|---------------------------------|-----------|---------|---------|---------------------|------|
| RATE OF PRODUCTION PER 24 HOURS | Oil bbls. | Gas MCF | Water % | Gas-oil ratio bbls. | CFPB |
|---------------------------------|-----------|---------|---------|---------------------|------|

| | |
|--|------------------------|
| Disposition of gas (vented, used on lease or sold) | Perforations 1698-1874 |
|--|------------------------|



1800

1900

2000

STATE COMMISSION COMMISSION

SEP 4 1987

OBSERVATION DIVISION
Wichita, Kansas