

STATE OF KANSAS  
 STATE CORPORATION COMMISSION  
 200 Colorado Derby Bldg.  
 Wichita, Kansas 67202

Form CP-4  
 Rev. 12-15-80

15101-20689-0000

WELL PLUGGING RECORD

Give All Information Completely  
 Make Required Affidavit

COUNTY Lane Co. SEC. 26 TWP. 19S RGE. 29W E/W  
 Location as in quarters or footage from lines:  
SW/4


Locate Well  
 correctly on above  
 Section Platt.

Lease Owner American Energies Corp.  
 Lease Name AMC #1 Chase Well No. #1  
 Office Address 575 Fourth Financial Center, Wichita, Ks 67202  
 Character of Well (Completed as Oil, Gas or Dry Hole): Dry Hole  
 Date Well Completed July 25, 1982  
 Application for plugging filed July 24, 1982  
 Plugging commenced July 25, 1982  
 Plugging completed July 25, 1982  
 Reason for abandonment of well or producing formation  
No commercial quantity of oil or gas encountered  
 Was permission obtained from the Conservation Division or it's  
 Agent's before plugging was commenced? yes

Name of Conservation Agent who supervised plugging of this well \_\_\_\_\_  
 Producing formation \_\_\_\_\_ Depth to top \_\_\_\_\_ bottom \_\_\_\_\_ T.D. 4690'  
 Show depth and thickness of all water, oil and gas formations.

OIL, GAS OR WATER RECORDS

Casing Record

Formation	Content	From	To	Size	Put in	Pulled Out

Describe in detail the manner in which the well was plugged, indicating where the mud fluid was placed and the method or methods used in introducing it into the hold. If cement or other plugs were used, state the character of same and depth placed, from \_\_\_\_\_ feet to \_\_\_\_\_ feet for each plug set.

Plugged down at 11:00

w 80 sks at 1100'  
 40 sks at 350'  
 10 sks at 40'  
 10 sks at Bathole  
 10 sks at Mousehole

RECEIVED  
 STATE CORPORATION COMMISSION

AUG 27 1982

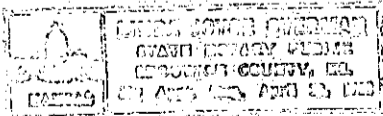
8-27-82  
 CONSERVATION DIVISION  
 Wichita, Kansas

(If additional description is necessary, use BACK of this sheet)

Name of Plugging Contractor Halliburton

STATE OF Kansas COUNTY OF Sedgwick, ss.

Floyd C. Wilson (employee of owner) or (owner or operator) of the above-described well, being first duly sworn on oath, says: That I have knowledge of the facts, statements, and matters herein contained and the log of the above-described well as filed and that the same are true and correct. So help me God.

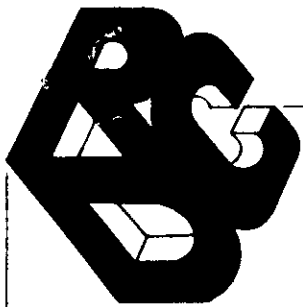


(Signature) Floyd C. Wilson  
3751 East Douglas, Wichita, Ks 67218  
 (Address)

SUBSCRIBED AND SWORN TO before me this 30th day of July, 19 82

My Commission expires: April 20, 1983

Linda Joyce Overman  
 Notary Public.



REACH DRILLING CORPORATION

July 27, 1982

RE: American Energies Corp.
#1 Chase
SW/4 Sec. 26T-19S-R29W
Lane Co., Kansas

OPERATOR: AMERICAN ENERGIES CORPORATION

CONTRACTOR: REACH DRILLING CORPORATION

DRILLING DATES: July 13th thru July 25th, 1982

Surface pipe 330' w/360 sx common 3% cc. & 2% Gel.

Table with 3 columns: Depth (0, 186, 2160, 2187, 3423, 4257), Depth (186, 2187, 3423, 4257, 4690), and Lithology (Sand & Shale, Shale, Anhy., Shale, Shale to Lime, Lime to Shale)

RECEIVED
STATE CORPORATION COMMISSION

AUG 27 1982

CONSERVATION DIVISION
Wichita, Kansas

We certify that the above and foregoing is a true and correct copy of the log on the American Energies Corp. #1 Chase, in Lane Co., Ks.

REACH DRILLING CORPORATION

Floyd C. Wilson (signature)

Floyd C. Wilson
President

Subscribed and sworn to before me this 27th day of July, 1982.

Linda Joyce Overman (signature)
Notary Public

Notary Public seal for Linda Joyce Overman, State of Kansas, Wichita, Kansas