

TYPE

NOTICE OF INTENTION TO DRILL 15169-60001-0001 C-1

TO BE FILED WITH THE STATE CORPORATION COMMISSION  
PRIOR TO COMMENCEMENT OF WELL

API Number OWWO  
(For office use only)

1. Operator Tom Brown Construction, Inc.

Starting Date July 15, 1974

Address Box 387, Lindsborg, Kansas 67456

County Saline

2. Contractor Company tools

Sec 2 Twp 16 S Rge 4  W

Address Same

Spot Location C NE/4

3. Type of Equipment: Rotary  Cable Tool \_\_\_\_\_

Nearest Lease Line 1/4 mile ft.

4. Well to be Drilled for: Oil  Gas \_\_\_\_\_

Lease Name Lockstrom

Disposal \_\_\_\_\_ Input \_\_\_\_\_ Other \_\_\_\_\_

5. Depth of Deepest Fresh Water within 1 mile 120 ft.

Well No. #5

6. Depth of Municipal Water Well within 3 miles 0 ft.

7. Depth to Protect all Fresh Water 225 ft.

8. Amount of Surface Casing ~~set~~ 345 ft.

Est. Total Depth 3433 ft.

9. Alternate No. 1  No. 2 \_\_\_\_\_

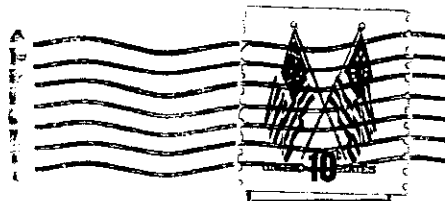
REMARKS: WASHDOWN

OPERATOR STATES THAT HE WILL COMPLY WITH K. S. A. 55-128

DRLO-7-28-54

Signature of Operator Tom C Brown *OK AB (md)*





**State Corporation Commission of Kansas**  
**Conservation Division**  
**P. O. Box 17027**  
**Wichita, Kansas 67217**

**RECEIVED**  
**STATE CORPORATION COMMISSION**  
**JUL 10 1974**  
**CONSERVATION DIVISION**  
**Wichita, Kansas**

**(IF PREFERRED, MAIL IN ENVELOPE)**