

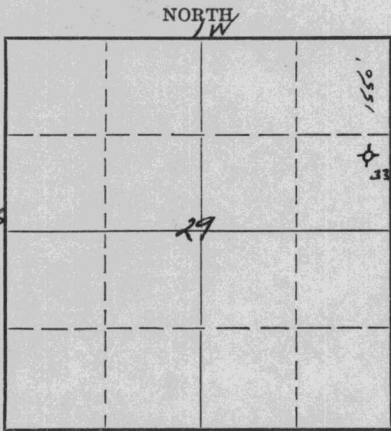
CPC4

WELL PLUGGING RECORD

Give All Information Completely  
Make Required Affidavit  
Mail or Deliver Report to:  
Conservation Division  
State Corporation Commission  
800 Bitting Building  
Wichita, Kansas

Saline County, Sec. 29 Twp. 16 Rge. 1 (EX. W. (W))

Location as "NE/CNW $\frac{1}{4}$ SW $\frac{1}{4}$ " or footage from lines NE SE NW  
 Lease Owner Deep Rock Oil Corporation  
 Lease Name Peterson Well No. 3  
 Office Address Box #1051, Tulsa, Oklahoma  
 Character of Well (completed as Oil, Gas or Dry Hole) Disposal Well  
 Date well completed August 27 19 44  
 Application for plugging filed January 30, 19 52  
 Application for plugging approved January 28, 19 52  
 Plugging commenced January 22 19 52  
 Plugging completed January 23 19 52  
 Reason for abandonment of well or producing formation Attempt to work over this well was a failure and well is being abandoned.  
 If a producing well is abandoned, date of last production..... 19.....  
 Was permission obtained from the Conservation Division or its agents before plugging was commenced? Yes, permission obtained from Mr. Durkee



Locate well correctly on above Section Plat

Name of Conservation Agent who supervised plugging of this well Mr. Ruel Durkee  
 Producing formation Dry Hole Depth to top..... Bottom..... Total Depth of Well 3034' Feet  
 Show depth and thickness of all water, oil and gas formations.

OIL, GAS OR WATER RECORDS

CASING RECORD

Formation	Content	From	To	Size	Put In	Pulled Out
				10-3/4"	130'	None
				7"	2643'	None
				5 1/2" (Liner)	337'	None

Describe in detail the manner in which the well was plugged, indicating where the mud fluid was placed and the method or methods used in introducing it into the hole. If cement or other plugs were used, state the character of same and depth placed, from.....feet to.....feet for each plug set.

Hole was filled with heavy mud to 412'.  
 Hole bridged. Pumped in 260 sacks cement,  
 filled to top of hole and into cellar.

(If additional description is necessary, use BACK of this sheet)

Name of Plugging Contractor Shamrock Drilling Company  
 Address Great Bend, Kansas

STATE OF Kansas, COUNTY OF Reno, ss.  
Jack Smith (employee of owner) or (~~owner or operator~~) of the above-described well,  
 being first duly sworn on oath, says: That I have knowledge of the facts, statements, and matters herein contained and the log of the above-described well as filed and that the same are true and correct. So help me God.

(Signature) Jack Smith

Box #1146, Hutchinson, Kansas  
 (Address)

SUBSCRIBED AND SWORN to before me this 30<sup>th</sup> day of January, 19 52

My commission expires September 28, 1955

Alice L. Walker  
 Notary Public.

PLUGGING  
 FILE SEC 29 T 16 R 1W  
 BOOK PAGE 140 LINE 42

RECEIVED  
 STATE CORPORATION COMMISSION  
 JAN 31 1952  
 CONSERVATION DIVISION  
 WICHITA, KANSAS

Deep Rock Oil Corporation  
 Ellen Peterson #3  
 NE SE NW  
 Section 29-16S-1W  
 Saline County, Kansas

Well Log

0	22	Surface Clay
22	34	Sand and gravel
34	90	Shale and shells
90	130	Lime
130	220	Anhydrite & Shale
220	385	Anhydrite, Shale & Shells
385	400	Shale and Shells
400	510	Sand and Lime
510	925	Shale and Lime
925	1020	Shale and Shells
1020	1220	Shale and Shells
1220	1430	Shale
1430	1440	Shale and Shells
1440	1490	Shale and Lime
1490	1510	Sandy Shale
1510	1561	Broken Lime
1561	1695	Lime and Shale
1695	1710	Broken Lime
1710	1922	Lime
1922	1932	Lime & Sandy Shale
1932	1950	Lime
1950	2009	Shale and Lime
2009	2050	Shale and Shells
2050	2067	Broken Lime
2067	2180	Lime
2180	2205	Shale & Lime
2205	2214	Broken Lime
2214	2265	Lime
2265	2644	Lime and Shale
2644	2648	Mississippi Lime
2648	2650	Brown Dolomite
2650	2665	Lime & Chert
2665	2672	Lime & Chert
2672	2675	Lime & Shale
2675	2684	Lime, gray
2684	2695	Gray Lime
2695	2744	Lime white, med.
2744	2775	Lime white, hard
2775	2790	Lime, white, hard
2790	2792	Shale gray
2792	2841	Lime, gray hard
2841	2843	Shale gray
2843	2847	Lime gray hard
2847	2857	Shale blue
2857	2872	Lime gray medium
2872	2946	Shale
2946	2991	Sandy Lime
2991	3034	Sandy Lime
3034		Total Depth

Casing Record

Set 10-3/4" surface pipe at 130', cemented with 100 sacks cement.  
 Set 7" 20# casing at 2643' cemented with 150 sacks cement.  
 Set 5 1/2" 17# liner at 2948' and cemented with 75 sacks cement.

