

STATE OF KANSAS
STATE CORPORATION COMMISSION
200 Colorado Derby Building
Wichita, Kansas 67202

WELL PLUGGING RECORD
K.A.R.-82-3-117

API NUMBER 15-169-005350000

LEASE NAME Tressin-B

TYPE OR PRINT
NOTICE: Fill out completely
and return to Cons. Div.
office within 30 days.

WELL NUMBER 1

4290 Ft. from S Section Line

990 Ft. from E Section Line

SEC. 20 TWP. 16S RGE. 1 ~~XXX~~ or (M)

COUNTY Saline

Date Well Completed 5-5-45

Plugging Commenced 3-27-86

Plugging Completed 4-8-86

LEASE OPERATOR Phillips Petroleum Company

ADDRESS R#3, Box 20-A, Great Bend, Ks 67530

PHONE# (916) 793-8421 OPERATORS LICENSE NO. 5229

Character of Well Oil

(Oil, Gas, D&A, SWD, Input, Water Supply Well)

Did you notify the KCC/KDHE Joint District Office prior to plugging this well? Yes

Which KCC/KDHE Joint Office did you notify? District #5, Salina, Kansas

Is ACO-1 filed? No If not, is well log attached? Yes

Producing Formation Douglas Sand Depth to Top 1859' Bottom 1863' T.D. PB1876'

Show depth and thickness of all water, oil and gas formations.

OIL, GAS OR WATER RECORDS

CASING RECORD

Formation	Content	From	To	Size	Put in	Pulled out
Surface	Water	0'	131'	10 3/4"	131'	-0-
Production	Oil & water	0'	2645'	7"	2645'	-0-

Describe in detail the manner in which the well was plugged, indicating where the mud fluid was placed and the method or methods used in introducing it into the hole. If cement or other plugs were used, state the character of same and depth placed, from feet to feet each set.

MIRU B-J Titan Serv & hook up to 7" csg. Pmpd 25 sx cmt, 10 gel, 3 hulls, 100 sx cmt. SI Press 300#, Max press 500#. Hook up to 10 3/4" annulus & pmp 100 sx cmt. SI press 100#, Max press 250#. State Rep, Gilbert Toman, on loc. Dump 3 yd ready mix cmt to surf. Weld cap on csg. Well P&A on 3-27-86, final operation completed 4-8-86.

(If additional description is necessary, use BACK of this form.)

Name of Plugging Contractor B-J Titan Services License No. _____

Address Great Bend, Kansas 67530

STATE OF Kansas COUNTY OF Barton, ss.

Kaare A. Westby, Area Manager (Employee of Operator) or (Operator) of above-described well, being first duly sworn on oath, says: That I have knowledge of the facts, statements, and matters herein contained and the log of the above-described well as filed that the same are true and correct, so help me God.

(Signature) Kaare Westby
Kaare A. Westby, Area Manager
(Address) R#3, Box 20-A, Great Bend, Ks 67530



SUBSCRIBED AND SWORN TO before me this 16th day of April, 1986
Wichita, Kansas

Velma L. Mog Notary Public

My Commission Expires: February 15, 1986

0 140 Surface clay
 140 415 Line and Shale streaks
 415 1840 Line and Shale
 1840 1857 Shale
 1857 1980 Sand
 1980 1995 Line
 1995 2047 Shale & Line
 2047 2644 Line and Shale
 2644 2647 Line Mississippi Chat - set pipe at 2645'

Cable Tool Hole

2647 2652 Line Mississippi Chat
 2652 2653 Line Mississippi Chat - Pay
 2653 Total Depth

Formation tops as noted from samples by
Walt Henderson, Geologist

1840 Top Douglas Series
 1857 1865 Sand - some good saturation. Driller noted good odor
 1865 1980 Sand and Line Streaks in Shale
 1980 1995 Dodge Line
 2047 Top HJ Lansing
 2644 Mississippi Line

RECEIVED
STATE CORPORATION COMMISSION

APR 17 1986

CONSERVATION DIVISION
Wichita, Kansas

RADIOACTIVITY WELL LOG

COMPANY s.o. 57185

FILE NO. 15-169-00535-0000

Location of Well
Office Copy
SW NE NE
20-16S-1W

COMPANY: DEEP ROCK OIL CORP.
WELL: TRESSIN COMMUNITY "B" NO. 1
FIELD: HUNTER
COUNTY: SALINE STATE: KANSAS
LOCATION: SW NE NE
SEC. 20 - 16S - 1W

COMPANY: DEEP ROCK OIL CORP.
WELL: TRESSIN COMMUNITY "B" NO. 1
FIELD: HUNTER
COUNTY: SALINE STATE: KANSAS
LOCATION: SW NE NE
SEC. 20-16S-1W

LOG MEAS. FROM 9'-9" ABOVE BRADEN HEAD ELEV. 1323.5
DRILL MEAS. FROM ROTARY BUSHING ELEV. 1323.5
PIEDM. DATUM 9'-9" ABOVE BRADEN HEAD ELEV. 1323.5

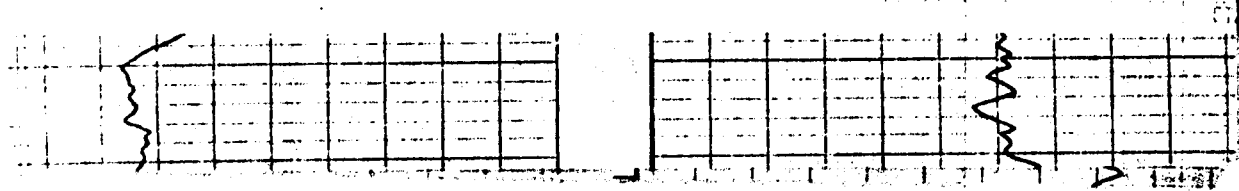
TYPE OF LOG
DRILLER
DEPTH (DRILLER)
LOGGED INTERVAL
LOGGED INTERVAL
FLUID IN HOLE
RECORDED TEMP.
SOURCE STRENGTH & TYPE
SPACING — IN.
MEASURING DEVICE — IN.
INSTRUMENT — IN.
CONSTANT — SECONDS
SPEED FT. MIN.
VARIATION — IN.
REFERENCE
BY
BY

GAMMA RAY	NEUTRON
1	1
3-20-53	3-20-53
2653	2653
2653	2653
1500	1500
2651	2651
OIL	OIL
	600N
	8.25
36	9
3 5/8	3 5/8
5	5
40	45
274	275
THOMPSON	THOMPSON
MICHEL	MICHEL

CASING RECORD

BIT SIZE	CASING	WT.—LB.	FROM WELL RECORD	FROM R A LOG
9	10 3/4	20	SURF. TO 131	TO
	7		SURF. TO 2645	SURF. TO 2646
			TO	TO
			TO	TO
			TO	TO

REMARKS OR OTHER DATA



STATE COMMISSION
MAR 12 1986
CONSERVATION DIVISION
Wichita, Kansas

