

STATE CORPORATION COMMISSION OF KANSAS  
OIL & GAS CONSERVATION DIVISION  
WELL COMPLETION OR RECOMPLETION FORM  
ACO-1 WELL HISTORY  
DESCRIPTION OF WELL AND LEASE

Operator: License # 5140  
Name Frontier Oil Company  
Address 125 N. Market, Ste. 1720  
City/State/Zip Wichita, Kansas 67202

Purchaser Clear Creek, Inc  
Wichita, Kansas 67202

Operator Contact Person Jean Angle  
Phone 316-263-1201

Contractor: License # 5302  
Name Red Tiger Drilling Company

Wellsite Geologist Steven D. Parker  
Phone 316-263-5172

Designate Type of Completion  
 New Well  Re-Entry  Workover

Oil  Gas  Dry  
 SWD  Inj  Other (Core, Water Supply et  
 Temp Abd  Delayed Comp.

If OWNO: old well info as follows:  
Operator  
Well Name  
Comp. Date  
Old Total Depth

WELL HISTORY

Drilling Method:  
 Mud Rotary  Air Rotary  Cable  
7-20-89 7-31-89 8-2-89  
Spud Date Date Reached TD Completion Date  
3739 N/A  
Total Depth PBDT

Amount of Surface Pipe Set and Cemented at 1125 feet  
Multiple Stage Cementing Collar Used?  Yes  No  
If yes, show depth set feet  
If alternate 2 completion, cement circulated from feet depth to w/ SX cmt  
Cement Company Name  
Invoice #

SIDE ONE

ORIGINAL

9/18/89 RELEASED

API NO. 15-165-21,482-0000 OCT. 1. 6. 1990

County Rush FROM CONFIDENTIAL

C E/2 NE SE 26 18 18 East  
Sec. Twp. Rge.  West

1980 Ft North from Southeast Corner of Section  
330 Ft West from Southeast Corner of Section  
(Note: Locate well in section plat below)

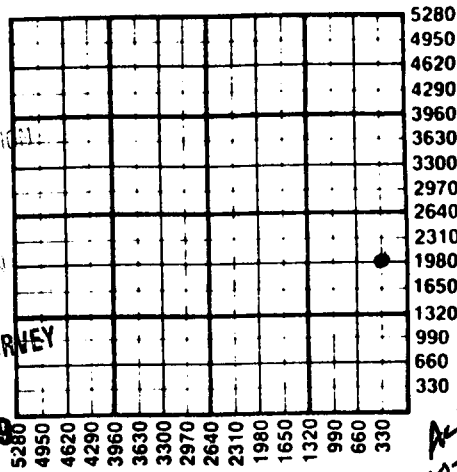
Lease Name Barron Well # 7

Field Name Rush Center South

Producing Formation Arbuckle

Elevation: Ground 1987 1992 KB

Section Plat



WATER SUPPLY INFORMATION

Disposition of Produced Water:  Disposal  Repressuring  
Docket #

Questions on this portion of the ACO-1 call:  
Water Resources Board (913) 296-3717

Source of Water:  
Division of Water Resources Permit #

Groundwater.....Ft North from Southeast Corner  
(Well) .....Ft West from Southeast Corner of  
Sec Twp Rge East West

Surface Water 2300 Ft North from Southeast Corner  
Stream, pond 3650 Ft West from Southeast Corner  
Sec 25 Twp 18 Rge 18 East  West

Other (explain) (purchased from city, R.W.D. #)

INSTRUCTIONS: This form shall be completed in triplicate and filed with the Kansas Corporation Commission, 200 Colorado Derby Building, Wichita, Kansas 67202, within 120 days of the spud date of any well. Rule 82-3-130, 82-3-107 and 82-3-106 apply. Information on side two of this form will be held confidential for a period of 12 months if requested in writing and submitted with the form. See rule 82-3-107 for confidentiality in excess of 12 months. One copy of all wireline logs and drillers time log shall be attached with this form. Submit CP-4 form with all plugged wells. Submit CP-111 form with all temporarily abandoned wells.

All requirements of the statutes, rules and regulations promulgated to regulate the oil and gas industry have been fully compiled with and the statements herein are complete and correct to the best of my knowledge.

Signature Jean Angle  
Title Agent Date 9-15-89

Subscribed and sworn to before me this 15th day of September, 1989  
Notary Public Ann Brennan  
Date Commission Expires 2-10-90

K.C.C. OFFICE USE ONLY  
 Letter of Confidentiality Attached  
 Wireline Log Received  
 Drillers Timelog Received  
Distribution  
 KCC  SWD/Rep  NGPA  
 KGS  Plug  Other  
(Specify)

Operator Name ..... Frontier Oil Company ..... Lease Name ..... Barron ..... Well # ..... 7

Sec. .... 26 .... Twp. .... 18S .... Rge. .... 18W ....  East  West County ..... Rush ..... RELEASED

CONFIDENTIAL

OCT 16 1990

WELL LOG

FROM CONFIDENTIAL

INSTRUCTIONS: Show important tops and base of formations penetrated. Detail all cores. Report all drill stem tests giving interval tested, time tool open and closed, flowing and shut-in pressures, whether shut-in pressure reached static level, hydrostatic pressures, bottom hole temperature, fluid recovery, and flow rates if gas to surface during test. Attach extra sheet if more space is needed. Attach copy of log. No Log

Drill Stem Tests Taken  Yes  No  
 Samples Sent to Geological Survey  Yes  No  
 Cores Taken  Yes  No

Formation Description  
 Log  Sample

DST #1 (3687-3730) 15-30 1st op - wk blo dead in 10"  
 Pkr failed on ISI. Rec. 550' M IF 44-44 No SIP recorded.

DST #2 (3696-3734) 15-30-15-30 1st op - wk blo dead in 8". 2nd op - no blo. Rec. 2' M IF & FF 21-21  
 ISIP 768 FSIP - not valid

DST #3 (3696-3739) 60-30-60-30 1st op - wk blo bldg to fair blo. 2nd op - wk blo to fair blo. Rec. 75'  
 GIP, 70' CGO, 65' MCO IF 32-53 FF 53-64  
 ISIP 1121 FSIP 1099

Name	Top	Bottom
Anhydrite	1115	+ 877
Topeka	3060	-1068
Heebner	3313	-1321
Toronto	3327	-1335
Lansing-Kansas City	3365	-1373
Base of Kansas City	3630	-1638
Arbuckle	3726	-1734
RTD	3739	-1747

CASING RECORD <input type="checkbox"/> New <input type="checkbox"/> Used							
Report all strings set-conductor, surface, intermediate, production, etc.							
Purpose of String	Size Hole Drilled	Size Casing Set (in O.D.)	Weight Lbs/Ft.	Setting Depth	Type of Cement	#Sacks Used	Type and Percent Additives
Surface	12 1/2"	8 5/8" (new)	23#	1125	60-40 POZ	400	2% gel, 3% CC
Production	7-7/8"	4 1/2 (used)	10 1/2#	3734	Com	150	10% gel, 5% Gil.
PERFORATION RECORD				Acid, Fracture, Shot, Cement Squeeze Record			
Shots Per Foot	Specify Footage of Each Interval Perforated			(Amount and Kind of Material Used)			Depth
TUBING RECORD				Liner Run	<input type="checkbox"/> Yes <input type="checkbox"/> No		
	Size	Set At	Packer at				
	2-3/8"	3727	N/A	N/A			
Date of First Production		Producing Method					
9-8-89		<input type="checkbox"/> Flowing <input checked="" type="checkbox"/> Pumping <input type="checkbox"/> Gas Lift <input type="checkbox"/> Other (explain).....					
Estimated Production Per 24 Hours	Oil	Gas	Water	Gas-Oil Ratio	Gravity		
	26 BOPD	N/A	20 BOPD	N/A			
	Bbls	MCF	Bbls	CFPB			

METHOD OF COMPLETION

Production Interval

Disposition of gas:  Vented  Open Hole  Perforation  Sold  Other (Specify) .....  Used on Lease

Dually Completed  Commingled

Phone 913-483-2627, Russell, Kansas  
 Phone 316-793-5861, Great Bend, Kansas

RELEASED  
 ORIGINAL  
 OCT 1 6 1990

Phone Plainville 913-434-2812  
 Phone Ness City 913-798-3843

# ALLIED CEMENTING CO., INC.

FROM CONFIDENTIAL No 1969

New

Home Office P. O. Box 31

Russell, Kansas 67665

Date	8-1-89	Sec.	26	Twp.	18	Range	18	Called Out	7:30 P.M.	On Location	9:45 P.M.	Job Start	11:30 P.M.	Finish	12:21	
Lease	Barron	Well No.	#7	Location				Rush Center, 1S, 1 1/2 E, N 1/4	County	Rush	State	KS				

Contractor Redtiger #1

Type Job Production

Hole Size	7 7/8"	T.D.	3739'
Csg.	4 1/2"	Depth	3734'
Tbg. Size		Depth	
Drill Pipe		Depth	
Tool		Depth	
Cement Left in Csg.	21'	Shoe Joint	21'
Press Max.		Minimum	
Meas Line	✓	Displace	59 bbb

Owner Same

To Allied Cementing Co., Inc.  
 You are hereby requested to rent cementing equipment and furnish cementer and helper to assist owner or contractor to do work as listed.

Charge To Frontier Oil Co.

Street 1437 N. Franklin

City Russell State Ks 67665

The above was done to satisfaction and supervision of owner agent or contractor.

Purchase Order No.

X [Signature]

**CEMENT**

**EQUIPMENT**

#	No	Cementer	Helper
Pumptrk	181		
	No	Cementer	Helper
Pumptrk			
	#	Driver	
Bulktrk	179		
Bulktrk		Driver	

Amount Ordered	150 SKS COMMON, 10% salt, 5% Gilsonite		
Consisting of	Common	150	5.00 750.00
	Poz. Mix		
	Gel.		
	Chloride	Gilsonite 750 #	.29 217.50
	Quickset		
	Salt-15		4.75 71.25
			Sales Tax
Handling	150	.90	135.00
Mileage	30		135.00
			Sub Total
			Total

**DEPTH of Job**

Reference:	Pumptrk Charge	8.38.00
	Pumptrk Mileage	30.00
1	4 1/2" Rubber Plug	43.00
	Sub Total	
	Tax	
	Total	911.00

Floating Equipment

**TOTAL # 2219.75**

**Less Disc - 443.95**

**# 1775.80**

9-21-90

Remarks: Run 3733' of 4 1/2" csg. Mixed 150sks com, 10% salt, 5% oil sol with Pumped Plug to 3712 with fresh water.

Float Did Hold,

Phone 913-483-2627, Russell, Kansas  
Phone 316-793-5861, Great Bend, Kansas

RELEASED

Phone Plainville 913-434-2812  
Phone Ness City 913-798-3843

OCT 16 1990

# ALLIED CEMENTING CO., INC.

No 1964

FROM CONFIDENTIAL  
Russell, Kansas 67665

New

Home Office P. O. Box 31

7-23-89

7-24-89

Date	7-23-89	Sec.	210	Twp.	18	Range	18	Called Out	8:00 P.M.	On Location	11:00 P.M.	Job Start	12:30 A.M.	Finish	2:00 A.M.
Least	Barren	Well No.	#7	Location	Rush Center, 1/2, 1/2 E, N1/2			County	Rush	State	KS				
Contractor	Red Tiger Dng #1				Owner	Same									
Type Job	Surface														
Hole Size	12 1/4"				T.D.	1125'									
Csg.	8 5/8"				Depth	1132'									
Tbg. Size					Depth										
Drill Pipe					Depth										
Tool					Depth										
Cement Left in Csg.	15'				Shoe Joint										
Press Max.					Minimum										
Meas Line	✓				Displace	✓ 41.52 bbls									
Perf.															

### EQUIPMENT

#	No	Cementer	Tim Phil
Pumptrk	175	Helper	Mike Steve
#	No	Cementer	
Pumptrk		Helper	
#		Driver	JACK S.
Bulktrk		Driver	JACK W.

### DEPTH of Job

Reference:	Pumptrk Charge	360.00
	Pumptrk Mileage	30.00
1	8 5/8" Rubber Plug	60.00
	832' at .39	324.48
	<b>Total</b>	<b>774.48</b>

Remarks: Called for trucks 7-23-89 @ 8:00 P.M. Sent crew in @ 8:30 A.M. 7-24-89 - called back for trucks @ 8:00 P.M. 7-24-89.

To Allied Cementing Co., Inc.  
You are hereby requested to rent cementing equipment and furnish cementer and helper to assist owner or contractor to do work as listed.

Charge To	Frontier Oil Co.		
Street	1437 N. Franklin		
City	Russell	State	Ks 67665

The above was done to satisfaction and supervision of owner agent or contractor.

Purchase Order No.

X *E. H. Reider*

### CEMENT

Amount Ordered 400 SKS 6 1/4 370 cc, 290 Geh,

Consisting of

Common	240	5.00	1200.00
Poz. Mix	160	2.25	360.00
Gel.	8	6.75	54.00
Chloride	12	20.00	240.00
Quickset			

Sales Tax

Handling 400 .90 360.00

Mileage 30 360.00

Sub Total

Total 2574.00

Floating Equipment

*Cement Circulated!*

TOTAL \$ 3348.48

Less Disc - 669.70

\$ 2678.78

SEP 21 1990

9-21-90

CONFIDENTIAL

Phone 913-183-2627, Russell, Kansas  
 Phone 316-793-5861, Great Bend, Kansas

Phone Plainville 913-434-2812  
 Phone Ness City 913-798-3843

# ALLIED CEMENTING CO., INC. No. 5704

Home Office P. O. Box 31

Russell, Kansas 67665

*New*

Date	7-21-89	Sec.	26	Twp.	18	Range	18	Called Out	←	On Location	9:00 AM	Job Start	10:00 AM	Finish	10:20 AM
Lease	Barton	Well No.	7	Location	Rush Center 151ENS			County	Rush	State	KS				
Contractor	Red Tiger Drlg #1														
Type Job	SPOT Cement														
Hole Size	12 1/4		T.D. 894												
Csg.	Depth														
Tbg. Size	Depth														
Drill Pipe	4 1/2		Depth 600'												
Tool	Depth														
Cement Left in Csg.	Shoe Joint														
Press Max.	Minimum														
Meas Line	Displace														
Perf.															

Owner **SAME**  
 To Allied Cementing Co., Inc.  
 You are hereby requested to rent cementing equipment and furnish cementer and helper to assist owner or contractor to do work as listed.

Charge To **Frontier Oil Co.**  
 Street **1437 N. Franklin**  
 City **Russell** State **Ko 67665**  
 The above was done to satisfaction and supervision of owner agent or contractor

Purchase Order No.  
 X **Emitt Hayden**

**400** CEMENT  
 Amount Ordered **400 SKS 60/40 2% gel 136**

Consisting of			
Common	240	5.00	1200.00
Poz. Mix	160	2.25	360.00
Gel.	8	6.75	54.00
Chloride	12	20.00	240.00
Quickset			

Sales Tax

Handling **400** **.90** **360.00**  
 Mileage **30** **360.00**

Sub Total  
 Total **2574.00**

Floating Equipment  
**Total \$ 3054.00**  
**Less Disc - 610.80**  
**\$ 2443.20**

### EQUIPMENT

GT Bend Pumptrk	No. 195	Cementer	Phil	
		Helper	Mike	
Pumptrk	No.	Cementer		
		Helper		
Bulktrk	208	Driver	Jack W.	
Bulktrk		Driver		

### DEPTH of Job

Reference:	Pump Trk chg	450.00
	Pump Trk mlg	30.00
	Sub Total	
	Tax	
	Total	480.00

Remarks: spotted 150 sks replaced  
 3 BBI's water seal 4 hrs to  
 drill came back again pumped  
 100 sks replaced 2 BBI's, came back in  
 mixed 50 sks spotted Hank You  
 2 BBI's, losing fluid in sand at 250' lost with mud

9-21-90

COPY

CONFIDENTIAL

GEOLOGICAL REPORT

RELEASED

OCT 16 1990

FROM CONFIDENTIAL

FRONTIER OIL COMPANY  
BARRON NO.7  
20'S. of C E/2 NE SE  
26-18S-18W  
RUSH COUNTY, KANSAS

DATE COMMENCED: July 20, 1989  
DATE OF RTD: July 31, 1989

SEP 26 1989

GEOLOGIST  
STEVE D. PARKER

Frontier Oil Company  
1720 KSB&T Bldg.  
Wichita, Kansas 67202

RE: Frontier Oil Company  
No.7 Barron  
20' S of E/2 NE SE  
26-18S-18W  
Rush County, Kansas

Dear Sir:

The following is a Geological Report with a Time Log attached on the above captioned well.

Drilling was supervised from 3710' to 3739', rotary total depth. Samples were examined from 3700' to rotary total depth.

All formation tops, zones of porosity, and staining are based on rotary bushing measurements. Any corrections in measurements during the drilling of the well have been incorporated into this report.

Elevation: American Elevations	1990 DF - 1992 KB	
Anhydrite	1115	+877
Topeka	3060	-1068
Heebner	3313	-1321
Toronto	3327	-1335
Lansing-Kansas City	3365	-1373
Base of Kansas City	3630	-1638
Arbuckle	3726	-1734
RTD	3739	-1747
4 1/2" Pipe At	3734	-1742

Structurally on top of the Arbuckle, the Barron No.7 ran approximately 3 feet lower than John J. Darrah's No.1 Barron, an abandoned Arbuckle producer located one-half location north.

ZONES OF INTEREST

ARBUCKLE (Top 3726 -1734)

3726 to 3728

White fine to medium crystalline dolomite, slightly cherty to sucrosic. No show free oil or staining, fair odor.

3728 to 3730

White fine to medium crystalline slightly glauconitic dolomite. No show free oil or staining, fair odor.

DRILL STEM TEST NO.1 (TRILOBITE TESTING)

3687 to 3730

15-30  
First opening weak blow dead in 10 minutes. Packer failed on initial shut-in. Recovered 550 feet mud with no show of oil.  
Initial flow pressures 44-44#.  
No shut-in pressures recorded.

3730 to 3734

Fine to medium crystalline dolomite. Trace light free oil and a faint odor.

DRILL STEM TEST NO.2

3696 to 3734

15-30-15-30  
First open weak blow dead in 8 minutes. Second open no blow. Recovered 2 feet of mud.  
Initial flow pressures 21 to 21#.  
Final flow pressures 21 to 21#.  
Initial shut-in pressure 768#.  
Final shut-in pressure was not valid, test tool was picked up too high.

3734 to 3739

Light tan to white fine to coarse crystalline dolomite. Fair light spotted staining, fair show of light free oil, good fluorescence, good odor.

DRILL STEM TEST NO.3

3696 to 3739

60-30-60-30  
First opening weak blow building to fair blow. Second opening weak blow building to fair blow. Recovered 75 feet gas-in-pipe, 70 feet clean gassy oil, and 65 feet mud cut oil (50% oil,



50% mud).  
Initial flow pressures 32 to 53#.  
Final flow pressures 53 to 64#.  
Initial shut-in pressure 1121#.  
Final shut-in pressure 1099#.

4 1/2 inch used casing was set at 3734 feet; 8 feet in the Arbuckle and 5 feet off bottom with 150 sacks common cement 10% salt and 5% gilsonite added. Zero point is 5 feet AGL and the shoe joint is 21.19 feet long.

Respectfully submitted,

A handwritten signature in cursive script, appearing to read 'S. D. Parker', written in black ink.

Steve D. Parker

DRILLING INFORMATION ON THE BARRON NO.7

Contractor: Red Tiger Drilling Co.  
Tool Pusher: Everett Higdon

Drillers: Julian  
Higdon  
Hearld

Spud Date: July 20, 1989      Date of RTD: July 31, 1989  
Surface Pipe: 8 5/8" @ 1125' w/400 sx      Casing: 4 1/2" @ 3734' w/150  
sx common, 10% salt, 5%  
gilsonite.

TOTAL FOOTAGE DRILLED PER DAY

Under Surface At 6:00 P.M. On July 25, 1989

	Feet	At	7:00 A.M.	On	
1462	"	"	"	"	7-26-89
1983	"	"	"	"	7-27-89
2780	"	"	"	"	7-28-89
3215	"	"	"	"	7-29-89
3630	"	"	"	"	7-30-89
3730	"	"	"	"	7-31-89
3739	"	"	10:17 P.M.	"	7-31-89

BIT RECORD

BITS	TYPE	FOOTAGE
1	EH 527 B CP	1125 to 3739

MUD RECORD

Company: Davis Mud & Chemical

Type: Chemical

Surface - 133 sx gel, 686 sx barite, 13 sx lime, 59 sx lignite, 7 sx  
soda ash, 10 sx desco, 5 sx hulls.

1983 3 sx lignite, 3 sx soda ash, 1 sx caustic.

2780 118 sx gel, 6 sx lignite, 6 sx caustic, 6 sx soda ash.

3215 1 sx lignite, 1 sx dapac.

3630 40 sx gel, 1 sx lignite, 2 sx caustic, 1 sx soda ash.

DRILLERS TIME LOG

Frontier Oil Company  
No.7 Barron

20' S. of E/2 NE SE  
Sec.26-18S-18W  
Rush County, Kansas

ELEV: 1987 GL  
1992 KB

DEPTH MINUTES REMARKS

1 Foot Drilling Time

2900 to 2910	3-2-2-3-3-2-3-2-2-2
2920	3-3-2-2-1-2-3-2-1-1
2930	2-1-1-1-2-1-2-2-1-2
2940	3-2-2-3-2-3-2-2-1-2
2950	1-2-2-1-2-2-1-2-2-2
2960	2-2-2-1-2-2-2-2-3-2
2970	2-2-2-2-2-2-2-1-1-1
2980	1-1-1-1-1-2-2-1-1-1
2990	2-1-1-1-1-2-3-3-2-3
3000	2-2-2-3-1-1-1-1-2-1
3000 to 3010	7-1-2-2-3-3-2-2-2-2
3020	4-3-3-3-3-2-2-3-3-2
3030	2-2-3-2-3-2-3-2-2-2
3040	2-3-2-3-3-2-3-2-3-2
3050	3-2-3-2-3-3-3-3-2-2
3060	1-2-1-1-2-1-1-2-2-2
3070	5-4-5-4-3-3-3-3-3-3
3080	3-2-3-2-3-3-3-3-3-4
3090	3-3-2-2-3-3-3-3-3-3
3100	2-2-2-2-2-2-2-2-2-2
3100 to 3110	3-3-2-3-3-3-3-2-3-2
3120	3-3-3-3-3-2-2-2-2-2
3130	1-2-2-2-2-2-2-1-1-1
3140	2-2-3-3-2-2-3-3-3-3
3150	2-3-5-5-4-2-2-2-2-2
3160	2-2-2-3-2-3-2-4-3-3
3170	3-3-3-3-2-2-3-3-2-2
3180	2-2-3-4-5-5-3-2-2-2
3190	2-3-3-3-3-2-3-2-3-4
3200	4-3-3-3-3-3-3-4-4-4
3200 to 3210	3-5-5-3-4-5-4-3-2-3
3220	2-2-3-3-2-3-2-2-1-1
3230	1-2-1-1-1-1-1-2-2-3-2

	3240	1-1-1-2-1-2-1-1-2-1
	3250	2-2-2-2-2-3-3-3-2-2
	3260	1-1-1-1-1-1-1-2-1-2
	3270	1-1-1-2-2-1-2-1-2-1
	3280	1-2-1-1-2-1-2-2-2-2
	3290	1-2-2-2-2-1-2-1-1-1
	3300	1-1-1-1-1-1-1-1-2-1
3300 to	3310	1-1-1-1-1-2-4-2-2-2
	3320	3-3-4-3-2-3-1-2-3-4
	3330	4-3-3-3-3-2-3-4-3-3
	3340	3-3-3-3-3-3-2-3-3-4
	3350	3-4-3-3-2-4-3-3-3-2
	3360	2-2-2-3-2-2-2-2-2-2
	3370	2-2-2-2-2-3-3-2-2-3
	3380	2-3-3-3-3-3-3-2-3-4
	3390	3-3-3-3-3-3-2-3-2-1
	3400	1-1-4-5-4-3-3-4-3-3
3400 to	3410	3-4-4-3-3-3-3-3-3-5
	3420	3-4-4-4-4-4-4-4-4-4
	3430	3-5-4-5-5-5-2-3-4-3
	3440	4-4-4-4-5-5-3-3-4-4
	3450	5-5-4-4-5-5-5-3-2-2
	3460	2-4-3-2-3-6-6-2-2-2
	3470	2-2-2-2-2-3-3-2-2-3
	3480	2-2-2-3-2-3-2-2-3-3
	3490	4-4-4-3-4-4-4-6-6-3
	3500	4-5-5-4-5-2-3-3-4-3
3500 to	3510	3-3-4-3-5-4-4-4-5-4
	3520	4-5-4-3-3-3-3-5-5-5
	3530	5-4-4-4-4-3-4-4-4-4
	3540	5-4-5-5-3-3-3-3-4-2
	3550	2-2-2-4-4-4-3-3-2-2
	3560	7-7-2-3-3-3-4-5-4-5
	3570	7-6-5-6-5-4-4-4-4-4
	3580	2-5-6-7-7-6-8-6-9-7
	3590	9-11-10-6-4-4-5-3-3-4
	3600	4-4-4-4-4-5-4-5-5-6
3600 to	3610	5-6-6-7-6-6-5-6-5-6
	3620	5-4-6-7-10-4-3-3-3-3
	3630	3-3-4-3-4-4-5-4-6-5
	3640	6-6-7-6-6-6-3-3-4-3
	3650	3-3-6-6-8-9-3-2-2-3
	3660	3-3-3-3-3-5-3-2-3-4
	3670	4-3-3-2-3-4-5-5-4-6
	3680	5-5-4-4-3-4-4-3-3-2

3690  
3700  
3700 to 3710  
3720  
3730  
3740

3-2-3-6-5-6-5-3-3-2  
2-4-5-4-5-5-5-4-4-4  
4-3-4-3-3-4-5-7-6-5  
3-3-4-3-3-4-4-4-4-3  
4-5-3-4-4-3-3-3-2-3  
2-4-4-3-4-4-3-4-4

DST NO.1 (3687 to 3730)  
DST NO.2 (3696 to 3734)  
DST NO.3 (3696 to 3739)  
3726 1/2 R  
3731 VSR