

FORM MUST BE TYPED

SIDE ONE

ORIGINAL

STATE CORPORATION COMMISSION OF KANSAS
OIL & GAS CONSERVATION DIVISION
WELL COMPLETION FORM
ACO-1 WELL HISTORY
DESCRIPTION OF WELL AND LEASE

Operator: License # 31283

Name: Argent Exploration, Inc.

Address 110 S. Main, Suite 810

City/State/Zip Wichita, Kansas 67202

Purchaser: _____

Operator Contact Person: James L. Rheem

Phone (316) 262-5111

Contractor: Name: L. D. Drilling, Inc.

License: 6039

Wellsite Geologist: Scott Oatsdean

Designate Type of Completion
 New Well Re-Entry Workover

Oil SWD SIOW Temp. Abd.
 Gas ENHR SIGW
 Dry Other (Core, WSW, Expl., Cathodic, etc)

If Workover/Re-Entry: old well info as follows:

Operator: _____

Well Name: _____

Comp. Date _____ Old Total Depth _____

Deepening Re-perf. Conv. to Inj/SWD
 Plug Back PSTD
 Cemented Docket No. 1
 Dual Completion Docket No. _____
 Other (SWD or Inj?) Docket No. _____

3-31-94 4-7-94 4-8-94

Spud Date _____ Date Reached TD _____ Completion Date _____

API NO. 15- 165-21651-0000

County Rush

N/2 NE NW Sec. 21 Twp. 19S Rng. 20 X W

330 Feet from S (circle one) Line of Section

1980 Feet from E (circle one) Line of Section

Footages Calculated from Nearest Outside Section Corner:
NE, SE, SW or SW (circle one)

Lease Name BANNISTER Well # 1

Field Name UNNAMED

Producing Formation _____

Elevation: Ground 2294' KS 2299'

Total Depth 4445' PSTD _____

Amount of Surface Pipe Set and Cemented at 297' Feet

Multiple Stage Cementing Collar Used? Yes No

If yes, show depth set _____ Feet

If Alternate II completion, cement circulated from _____

feet depth to _____ w/ _____ sz cat.

Drilling Fluid Management Plan D&A J94 6-29-95
(Data must be collected from the Reserve Pit)

Chloride content 5,000± ppm Fluid volume 2060 bbls

Desulphurizing method used evaporation

Location of fluid disposal if hauled offsite: _____

Operator Name _____

Lease Name _____ License No. _____

Quarter _____ Sec. _____ Twp. _____ Rng. _____ E/W

County _____ Docket No. _____

INSTRUCTIONS: An original and two copies of this form shall be filed with the Kansas Corporation Commission, 200 Colorado Derby Building, Wichita, Kansas 67202, within 120 days of the spud date, recompletion, workover or conversion of a well. Rule 82-3-130, 82-3-106 and 82-3-107 apply. Information on side two of this form will be held confidential for a period of 12 months if requested in writing and submitted with the form (see rule 82-3-107 for confidentiality in excess of 12 months). One copy of all wireline logs and geologist well report shall be attached with this form. ALL CEMENTING TICKETS MUST BE ATTACHED. Submit CP-4 form with all plugged wells. Submit CP-111 form with all temporarily abandoned wells.

All requirements of the statutes, rules and regulations promulgated to regulate the oil and gas industry have been fully complied with and the statements herein are complete and correct to the best of my knowledge.

Signature [Signature]

Title President Date 6-2-94

Subscribed and sworn to before me this 2 day of June, 19 94.

Notary Public [Signature]

Date Commission Expires 10-5-97

LINDA A. KREUZBURG
NOTARY PUBLIC
STATE OF KANSAS
My Appt. Exp. 10-5-97

E.C.C. OFFICE USE ONLY
F Copy of Confidentiality Attached
C Wireline Log Received
C Geologist Report Received
Distribution
 KCC SWD/Rep NSPA
 KGS Plug Other (Specify)

SIDE TWO

Operator Name Argent. Exploration, Inc.

Lease Name Bannister

Well # 1

Sec. 21 XX East
XX West
19S 20

County Rush

INSTRUCTIONS: Show important tops and base of formations penetrated. Detail all cores. Report all drill stem tests giving interval tested, time tool open and closed, flowing and shut-in pressures, whether shut-in pressure reached static level, hydrostatic pressures, bottom hole temperature, fluid recovery, and flow rates if gas to surface during test. Attach extra sheet if more space is needed. Attach copy of log.

Drill Stem Tests Taken Yes No
 (Attach Additional Sheets.)

Samples Sent to Geological Survey Yes No

Cores Taken Yes No

Electric Log Run Yes No
 (Submit Copy.)

List All E.Logs Run:

Log Formation (Top), Depth and Datum Sample

Name	Top	Datum
ANHYDRITE	1513	+786
HEEBNER	3813	-1514
LANSING	3854	-1555
KC	3932	-1633
LABETTE	4316	-2017
SAND	4336	-2037
OSAGE	4412	-2113

CASING RECORD

New Used

Report all strings set-conductor, surface, intermediate, production, etc.

Purpose of String	Size Hole Drilled	Size Casing Set (in O.D.)	Weight Lbs./Ft.	Setting Depth	Type of Cement	# Sacks Used	Type and Percent Additives
surface	12 1/4"	8 5/8"	28#	297	40/60 Poz	185	2% Gel 3% CC

ADDITIONAL CEMENTING/SQUEEZE RECORD

Purpose:	Depth Top Bottom	Type of Cement	#Sacks Used	Type and Percent Additives
<input type="checkbox"/> Perforate				
<input type="checkbox"/> Protect Casing				
<input type="checkbox"/> Plug Back TD				
<input type="checkbox"/> Plug Off Zone				

Shots Per Foot	PERFORATION RECORD - Bridge Plug Set/Type		Acid, Fracture, Shot, Cement Squeeze Record	
	Specify Footage of Each Interval Perforated		(Amount and Kind of Material Used)	Depth

TUBING RECORD Size Set At Packer At Liner Run Yes No

Date of First, Resumed Production, SWD or Inj. D&A Producing Method Flowing Pumping Gas Lift Other (Explain)

Estimated Production Per 24 Hours Oil N/A Bbls. Gas N/A Mcf Water N/A Bbls. Gas-Oil Ratio Gravity

Disposition of Gas: Vented Sold Use (If vented, submit ACC) METHOD OF COMPLETION Surface Usually Comp. Commingled Production Interval

15-165-21651-0000

TRILOBITE TESTING, L.L.C.

P.O. Box 362 • Hays, Kansas 67601

ORIGINAL

Drill-Stem Test Data

Well Name #1 BANNISTER Test No. 1 Date 4/6/94
 Company ARGENT EXPLORATION INC. Zone CHEROKEE
 Address 110 S MAIN #810 WICHITA KS 67202 Elevation 2299
 Co. Rep./Geo. SCOTT OATSDEAN Cont. L.D.DRLG. RIG #1 Est. Ft. of Pay 6
 Location: Sec. 21 Twp. 19S Rge. 20W Co. RUSH State KS

Interval Tested 4330-4345 Drill Pipe Size 4.5 XH
 Anchor Length 15 Wt. Pipe I.D. - 2.7 Ft. Run _____
 Top Packer Depth 4325 Drill Collar - 2.25 Ft. Run _____
 Bottom Packer Depth 4330 Mud Wt. N/A lb/Gal.
 Total Depth 4345 Viscosity 46 Filtrate 10

Tool Open @ 12:26 PM Initial Blow 3/4" BLOW BUILDING TO 9"

Final Blow SURFACE BLOW BUILDING TO 2" THEN DECREASING TO 1.5"

Recovery - Total Feet 370 Flush Tool? NO

Rec. 130 Feet of MUDDY WATER
 Rec. 240 Feet of SALT WATER
 Rec. _____ Feet of _____
 Rec. _____ Feet of _____
 Rec. _____ Feet of _____

BHT 121 °F Gravity _____ °API @ _____ °F Corrected Gravity _____ °API
 RW 0.4 @ _____ °F Chlorides 22000 ppm Recovery Chlorides N/A ppm System

(A) Initial Hydrostatic Mud 2073.4 PSI AK1 Recorder No. 22150 Range 3925

(B) First Initial Flow Pressure 51.1 PSI @ (depth) 4335 w / Clock No. 25110

(C) First Final Flow Pressure 96.6 PSI AK1 Recorder No. 24174 Range 3050

(D) Initial Shut-in Pressure 317.4 PSI @ (depth) 4342 w / Clock No. 25109

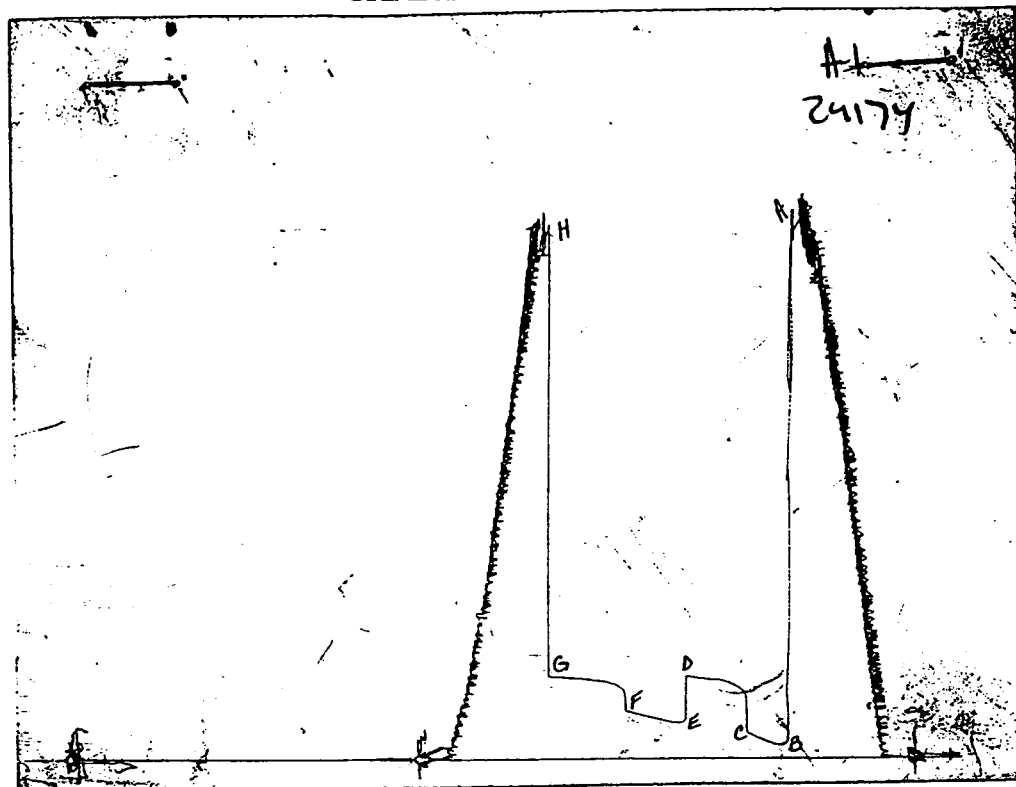
(E) Second Initial Flow Pressure 134.8 PSI AK1 Recorder No. _____ Range _____

(F) Second Final Flow Pressure 180.8 PSI @ (depth) _____ w / Clock No. _____

(G) Final Shut-in Pressure 317.4 PSI Initial Opening 30 Final Flow 45

(H) Final Hydrostatic Mud 2065.6 PSI Initial Shut-in 45 Final Shut-in 60

Our Representative PAUL SIMPSON



This is an actual photograph of recorder chart #24174

	FIELD READING	OFFICE READING
(A) INITIAL HYDROSTATIC MUD	2151	2073.4
(B) FIRST INITIAL FLOW PRESSURE	44	51.1
(C) FIRST FINAL FLOW PRESSURE	97	96.6
(D) INITIAL CLOSED-IN PRESSURE	324	317.4
(E) SECOND INITIAL FLOW PRESSURE	127	134.8
(F) SECOND FINAL FLOW PRESSURE	179	180.8
(G) FINAL CLOSED-IN PRESSURE	324	317.4
(H) FINAL HYDROSTATIC MUD	2097	2065.6

15-165-21651-0000

TRILOBITE TESTING, L.L.C.

P.O. Box 362 • Hays, Kansas 67601

Drill-Stem Test Data

Well Name #1 BANNISTER Test No. 2 Date 4/7/94
 Company ARGENT EXPLORATION INC. Zone MISS
 Address 110 S MAIN #810 WICHITA KS 67202 Elevation 2299
 Co. Rep./Geo. SCOTT OATSDEAN Cont. L.D.DRLG. RIG #1 Est. Ft. of Pay _____
 Location: Sec. 21 Twp. 19S Rge. 20W Co. RUSH State KS

Interval Tested 4409-4415 Drill Pipe Size 4.5 XH
 Anchor Length 6 Wt. Pipe I.D. - 2.7 Ft. Run _____
 Top Packer Depth 4405 Drill Collar - 2.25 Ft. Run _____
 Bottom Packer Depth 4409 Mud Wt. 9.3 lb/Gal.
 Total Depth 4415 Viscosity 48 Filtrate 10.6

Tool Open @ 3:39 AM Initial Blow VERY WEAK SURFACE BLOW-DIED IN 3 MINUTES

Final Blow NO BLOW

Recovery - Total Feet 1 Flush Tool? NO

Rec. 1 Feet of MUD
 Rec. _____ Feet of _____
 Rec. _____ Feet of _____
 Rec. _____ Feet of _____
 Rec. _____ Feet of _____

BHT 120 °F Gravity _____ °API @ _____ °F Corrected Gravity _____ °API
 RW _____ @ _____ °F Chlorides _____ ppm Recovery Chlorides _____ ppm System

(A) Initial Hydrostatic Mud 2256.2 PSI AK1 Recorder No. 24174 Range 3050

(B) First Initial Flow Pressure 18.5 PSI @ (depth) 4412 w / Clock No. 25109

(C) First Final Flow Pressure 22.2 PSI AK1 Recorder No. _____ Range _____

(D) Initial Shut-in Pressure 24.4 PSI @ (depth) _____ w / Clock No. _____

(E) Second Initial Flow Pressure 22.2 PSI AK1 Recorder No. _____ Range _____

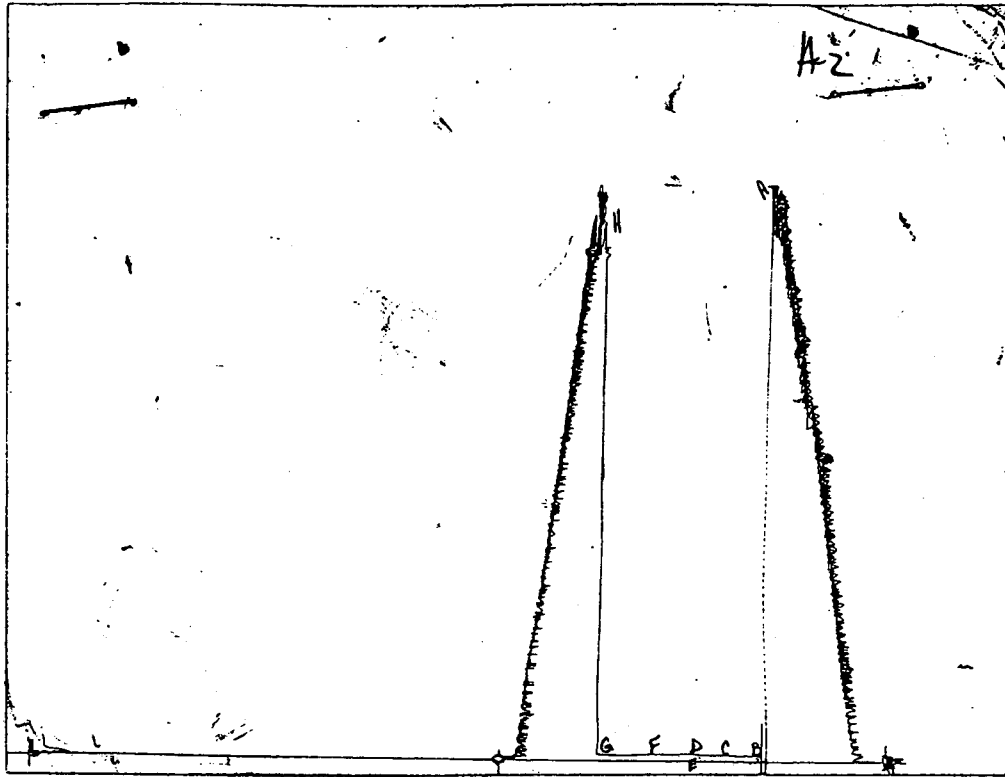
(F) Second Final Flow Pressure 22.2 PSI @ (depth) _____ w / Clock No. _____

(G) Final Shut-in Pressure 23.6 PSI Initial Opening 30 Final Flow 30

(H) Final Hydrostatic Mud 2245.2 PSI Initial Shut-in 30 Final Shut-in 30

Our Representative PAUL SIMPSON

CHART PAGE



This is an actual photograph of recorder chart #24174

	FIELD READING	OFFICE READING
(A) INITIAL HYDROSTATIC MUD	2261	2256.2
(B) FIRST INITIAL FLOW PRESSURE	22	18.5
(C) FIRST FINAL FLOW PRESSURE	22	22.2
(D) INITIAL CLOSED-IN PRESSURE	27	24.4
(E) SECOND INITIAL FLOW PRESSURE	22	22.2
(F) SECOND FINAL FLOW PRESSURE	22	22.2
(G) FINAL CLOSED-IN PRESSURE	22	23.6
(H) FINAL HYDROSTATIC MUD	2230	2245.2

15-165-21651-0000

ORIGINAL

Phone 913-483-2627, Russell, KS
Phone 316-793-5861, Great Bend, KS

Phone 913-625-5516, Hays, KS
Phone 913-672-3471, Oakley, KS

Phone 316-886-5926, Medicine Lodge, KS
Phone 913-798-3843, Ness City, KS

ALLIED CEMENTING CO., INC.

6114

Home Office P. O. Box 31

Russell, Kansas 67665

New

Date	4/7/94	Sec.	21	Twp.	195	Range	20w	Called Out	1 PM	On Location	3:30	Job Start	4:30	Finish	7 PM
Lease	Bannister	Well No.	1	Location	Alexander	55 4E 5 into			County	R451	State	Ks.			

Contractor	LD
Type Job	Rotary Plug
Hole Size	7 7/8
Csg.	8 5/8
Tbg. Size	
Drill Pipe	4 1/2
Tool	
Cement Left in Csg.	
Press Max.	
Meas Line	
Perf.	

Owner Same
To Allied Cementing Co., Inc.
You are hereby requested to rent cementing equipment and furnish cementer and helper to assist owner or contractor to do work as listed.

Charge To Argent Exploration Inc.
Street 110 S. Main # 810
City Wichita State Ks, 67202
The above was done to satisfaction and supervision of owner agent or contractor.

Purchase Order No. *[Signature]*
X *[Signature]*
CEMENT

Amount Ordered	175 6 3/4 6% Gel 1/4" F5 seal		
Consisting of			
Common	105	5.75	603.75
Poz. Mix	70	3.00	210.00
Gel.	9	9.00	81.00
Chloride			
Quickset			
	F10 Seal - 44#	1.10	48.40
		Sales Tax	
Handling	175	1.00	175.00
Mileage	25		175.00
			293.15

RECEIVED
STATE CORPORATION COMMISSION
OCT 14 1994
10-14-94
CONSERVATION DIVISION
WICHITA, KANSAS

EQUIPMENT

No.	Cementer	Gary
Pumptrk 224	Helper	Mike
No.	Cementer	
Pumptrk	Helper	
	Driver	Bill
Bulktrk 116		
Bulktrk	Driver	

DEPTH of Job

Reference:	Pump Truck	430.00
25	Mileage	56.25
	8 5/8" OHP	21.00
	Sub-Total	
	Tax	
	Total	507.25

Remarks:

50	sr @ 1550'	
50	" " 820'	
50	" " 350'	Thank you!
10	" " 40'	
15	" " RH	Ray L. Hensel

Floating Equipment

TOTAL \$ 1800.40
Disc - 360.08
\$ 1440.32