

TYPE

NOTICE OF INTENTION TO DRILL

C-1

**TO BE FILED WITH THE STATE CORPORATION COMMISSION
PRIOR TO COMMENCEMENT OF WELL**

API Number 15-165-20,570-
(For office use only) 0000

1. Operator Icer Addis
Address P.O. Drawer 8038 - Wichita, Ks. 67208
2. Contractor Duke Drilling Co.
Address Box 823 - Great Bend, Kansas 67530
3. Type of Equipment: Rotary Cable Tool _____
4. Well to be Drilled for: Oil Gas _____
Disposal _____ Input _____ Other _____
5. Depth of Deepest Fresh Water within 1 mile 125 ft.
6. Depth of Municipal Water Well within 3 miles _____ ft.
7. Depth to Protect all Fresh Water 150 ft.
8. Amount of Surface Casing to be set approx. 1020 ft.
9. Alternate No. 1 No. 2 _____

Starting Date January 28, 1976
County Rush
Sec 12 Twp 19 S S Rge 16 W
Spot Location C NE SE
Nearest Lease Line 660 ft.
Lease Name Miller A #1
Well No. A-1
Est. Total Depth 3650 ft.

REMARKS:

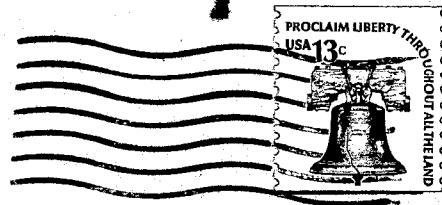
OPERATOR STATES THAT HE WILL COMPLY WITH K. S. A. 55-128

Signature of Operator

Icer Addis
EB



(MD)



State Corporation Commission of Kansas
Conservation Division
P.O. Box 17027
Wichita, Kansas 67217

RECEIVED
STATE CORPORATION COMMISSION

JAN 23 1976
1-23-76
CONSERVATION DIVISION
Wichita, Kansas

(IF PREFERRED, MAIL IN ENVELOPE)