

TYPE OR PRINT

15-165-30006-000  
NOTICE OF INTENTION TO DRILL

C-1

TO BE FILED WITH THE STATE CORPORATION COMMISSION PRIOR TO COMMENCEMENT OF WELL

1. Operator Shields Oil Producers Inc Address Russell, Kansas
2. Lease name Miller "D" Well No. 1 County Rush
3. Well Location C NW NW Sec. 35 Township 19 Range 20 W
4. Well to be drilled 660 ft. from nearest lease line.
5. Drilling Contractor Shields Drlg Co. Inc Address Russell, Kansas
6. Type of equipment: Rotary  Cable Tool  Approx. date operation to begin 3-8 1965.
7. Well to be drilled for Oil  Gas  Disposal  Input  Estimated Total Depth of Well 4300 ft.
8. Depth of deepest fresh water well within one mile of location 200 ft. If none exists, write NONE.
9. Ground elevation at location is approx. 10 ft. higher or \_\_\_\_\_ ft. lower than ground elevation at water well.
10. Depth of the deepest municipal water well within three miles of location None ft. If none exists, write NONE
11. Operator states that he will set surface pipe at least 25 ft. below all Tertiary or unconsolidated deposits and, taking into consideration differences in ground elevations, that the minimum depth necessary, to the best of his knowledge and belief, to protect all fresh water zones is 250 ft. and operator agrees to set surface pipe at this location to a depth of not less than 350 ft. Alternate 1  Alternate 2

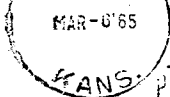
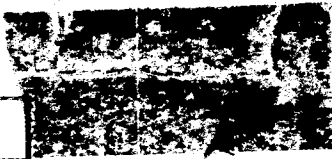
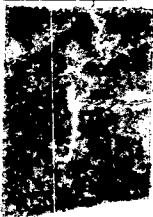
REMARKS:

Signature of Operator

Shields Oil Producers Inc.



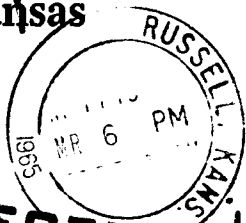
M L Rotts



METER  
PB 505489



**State Corporation Commission of Kansas  
Conservation Division  
500 Insurance Building  
212 North Market  
Wichita, Kansas 67202**



**RECEIVED**  
STATE CORPORATION COMMISSION

MAR 8 1965  
3-8-65  
CONSERVATION DIVISION  
Wichita, Kansas

**(IF PREFERRED, MAIL IN ENVELOPE)**

