

WELL PLUGGING RECORD

15135-22086-0000

Give All Information Completely
 Make Required Affidavit

COUNTY Ness SEC. 24 TWP. 20 SRGE. 15 W E/W
 Location as in quarters or footage from lines:
100' E of SW SW NE

Lease Owner (Wild Boys and the Silver Bullet Oil Companies) Dynamar Energy, Inc.
 Lease Name Copeland (It's Just Crude) Well No. _____
 Office Address 807 N. Waco Suite 3 A - Wichita, Kansas, 67202
 Character of Well (Completed as Oil, Gas or Dry Hole): Oil
 Date Well Completed 1981
 Application for plugging filed 11-4-82
 Plugging commenced 12-13-82
 Plugging completed 12-17-82
 Reason for abandonment of well or producing formation _____

Locate Well
 correctly on above
 Section Platt.

Depleted
 Was permission obtained from the Conservation Division or it's
 Agent's before plugging was commenced? Yes

Name of Conservation Agent who supervised plugging of this well Bob Tarbutton
 Producing formation _____ Depth to top _____ bottom T.D. 4,508
 Show depth and thickness of all water, oil and gas formations.

OIL, GAS OR WATER RECORDS Casing Record

Formation	Content	From	To	Size	Put in	Pulled Out
				8 5/8	592	None
				5 1/2	4498	2403

Describe in detail the manner in which the well was plugged, indicating where the mud
 fluid was placed and the method or methods used in introducing it into the hold. If cement
 or other plugs were used, state the character of same and depth placed, from _____ feet
 to _____ feet for each plug set.
Plugged back at 4,498 - Top perf - 4,331 - 46
Sand from 4,498 to 4,208
5 sacks cement from 4,280 to 4,250
Sun Cementing pumped in 3 sacks hulls - 10 jell - 70 sacks cement
15 sacks jell - 1 sack hulls + Dropped plug - 70 sacks cement
50-50- POZ - 3% jell - 3% C.C.

(If additional description is necessary, use BACK of this sheet)
 Name of Plugging Contractor Clarke Corporation

STATE OF Kansas COUNTY OF Barber, ss.
Elmo B. Borgmestern (employee of owner) or (owner or operator) of the
 above-described well, being first duly sworn on oath, says: That I have knowledge of the
 facts, statements, and matters herein contained and the log of the above-described well as
 filed and that the same are true and correct. So help me God.

(Signature) Elmo B. Borgmestern
Wichita, Kansas
 (Address)

SUBSCRIBED AND SWORN TO before me this 22nd day of Nov., 19 82.

James Starnett
 Notary Public.

My Commission expires: April 4, 1986.

DEC 27 1982
 12-27-82
 CONSERVATION DIVISION
 Wichita, Kansas

COUNTY NESS FIELD CUZZLER'S CULCH FIELD
 LOCATION SEC. 24-20S-25W
 WELL IT'S JUST CRUDE NO. 1
 COMPANY WILD BOYS LAND, CATTLE & OIL COMPANY, LTD., & THE SILVER BULLET OIL COMPANY
 PHONE 15735-22086-0000

WELL IT'S JUST CRUDE NO. 1
 FIELD CUZZLER'S CULCH FIELD
 COUNTY NESS STATE KANSAS

LOCATION SW SW NE
 API SERIAL NO 24 SEC 24S TWP 20S RANGE 25W
 Other Services: CNL / FDC - CR

Permanent Datum: GROUND LEVEL; Elev.: 2360
 Log Measured From K.B. 12 Ft. Above Perm. Datum Elev.: K.B. 2372
 Drilling Measured From K.B. D.F. 2370
 G.L. 2360

Date	9-9-81	RECEIVED STATE CORPORATION COMMISSION MAR 26 1982 CONSERVATION DIVISION @ Wichita, Kansas @	
Run No.	ONE		
Depth-Driller	4500		
Depth-Logger	4508		
Bitm. Log Interval	4502		
Top Log Interval	580		
Casing-Driller	8 5/8 @ 605		
Casing-Logger	580		
Bit Size	7 7/8		
Type Fluid in Hole	CHEMICAL / POLYPAC		
Dens.	9.3	55	
Visc.			
pH	10.0	10.2ml	
Fluid Loss			
Source of Sample	CIRCULATED		
Rm @ Meas. Temp.	.53 @ 80 °F	.4 @ 112 °F	@ °F
Rmf @ Meas. Temp.	.34 @ 82 °F	.26 @ 112 °F	@ °F
Rmc @ Meas. Temp.	.76 @ 81 °F	.58 @ 112 °F	@ °F
Source: Rmf Rmc	MEAS. CHART		
Rm @ BHT	.53 @ 112 °F	@ °F	@ °F
Circulation Stopped	1500		
Logger on Bottom	2030		
Max. Rec. Temp.	112 °F	°F	°F
Equip. Location	7714 CREAT BEND		
Recorded By	ISBISTER		
Witnessed By	SMITH		

FIELD HERE: _____ The well name, location and borehole reference data were furnished by the customer.

EQUIPMENT DATA		SCALE CHANGES	
Panel No.	Order No.	Type Log	Scale
ONE	245900	Depth	Scale Up Hole
FILL	8000		
60	60		
1035			
968			
1185			
457			
1116			
2242			

4-FIN			
1.5"			
1.0			
6.1			
3.7			

1.0			
6.1			
3.7			
150			
1.0			
150			

REMARKS: SP. SHIFT AT 2040, 830

All interpretations are opinions based on inferences from electrical or other measurements and we cannot, and do not guarantee the accuracy or correctness of any interpretations, and we shall not, except in the case of gross or willful negligence on our part, be liable or responsible for any loss, costs, damages or expenses incurred or sustained by anyone resulting from any interpretation made by any of our employees. Interpretations are also subject to our General Terms and Conditions as set out in our current Price Schedule.

SPONTANEOUS - POTENTIAL

CONDUCTIVITY

DEEP INDUCTION

MILLIMHOS/M = 1000 OHMS M²/M

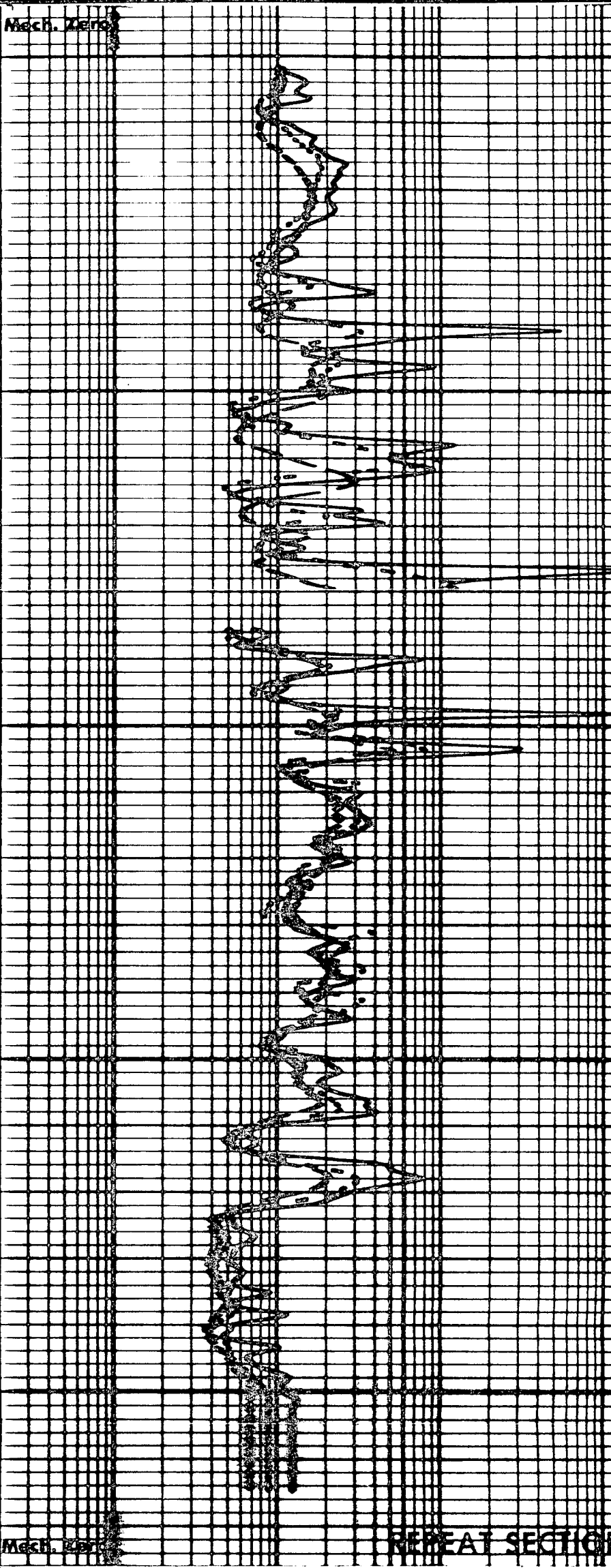
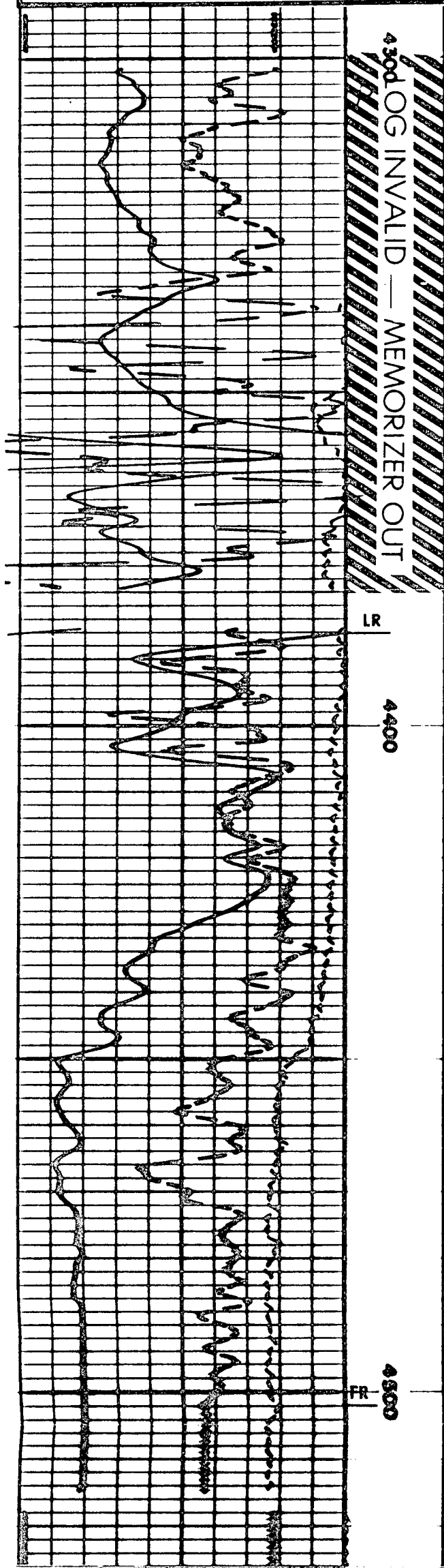
MILLIVOLTS

15

1000 500

REPEAT SECTION

Mech. Zero



Mech. Zero

REPEAT SECTION

GAMMA RAY API UNITS

0 150

150 300

