

TYPE

# NOTICE OF INTENTION TO DRILL

C-1

TO BE FILED WITH THE STATE CORPORATION COMMISSION  
PRIOR TO COMMENCEMENT OF WELL

API Number 15-077-20,264-  
(For office use only) 0000

1. Operator SeRoBee and Shaffer

Starting Date May 25, 1974

County Harper County, Kansas

Address 404 Wolcott Building, Hutchinson, Ks.  
67501

Sec. 18 Twp. 32S S Rge. 9W W

2. Contractor DaMac Drilling Company, Inc.

Spot Location C NE SW

Address Box 1164, Great Bend, Kans. 67530

Nearest Lease Line 660 ft.

3. Type of Equipment: Rotary  Cable Tool

Lease Name Clark No. 1

4. Well to be Drilled for: Oil  Gas

Well No. 1

Disposal  Input  Other

5. Depth of Deepest Fresh Water within 1 mile 200 ft.

6. Depth of Municipal Water Well within 3 miles None ft.

7. Depth to Protect all Fresh Water 235 ft.

8. Amount of Surface Casing to be set 235 ft.

Est. Total Depth 4350 ft.

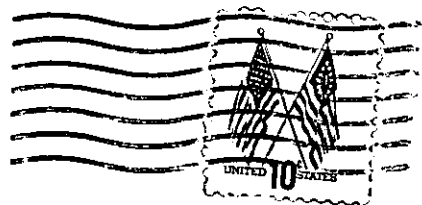
9. Alternate No. 1  No. 2

REMARKS:

OPERATOR STATES THAT HE WILL COMPLY WITH K. S. A. 55-128

Signature of Operator SeRoBee and Shaffer  
by Martha J. McKown





**State Corporation Commission of Kansas  
Conservation Division  
P. O. Box 17027  
Wichita, Kansas 67217**

**RECEIVED  
STATE CORPORATION COMMISSION  
MAY 22 1974  
S-22-74  
CONSERVATION DIVISION  
Wichita, Kansas**

(IF PREFERRED, MAIL IN ENVELOPE)