

TO BE FILED WITH THE STATE CORPORATION COMMISSION PRIOR TO COMMENCEMENT OF WELL

1. Operator Sioux Petroleum Co. Address 104 Kansas, Medicine Lodge, Ks.
2. Lease name Drumm Well No. 1 County Barber
3. Well Location 120' E. & 230 N. of NW NW NE Sec. 31 Township 32S Range 11W
4. Well to be drilled 100 ft. from nearest lease line.
5. Drilling Contractor Leben Drilling, Inc. Address Box 486, Great Bend, Kansas
6. Type of equipment: Rotary  Cable Tool  Approx. date operation to begin ~~8X80~~ 11-15 1965
7. Well to be drilled for Oil  Gas  Disposal  Input  Estimated Total Depth of Well 3750 ft.
8. Depth of deepest fresh water well within one mile of location \_\_\_\_\_ ft. If none exists, write NONE none.
9. Ground elevation at location is approx. \_\_\_\_\_ ft. higher or \_\_\_\_\_ ft. lower than ground elevation at water well.
10. Depth of the deepest municipal water well within three miles of location \_\_\_\_\_ ft. If none exists, write NONE none.
11. Operator states that he will set surface pipe at least 25 ft. below all Tertiary or unconsolidated deposits and, taking into consideration differences in ground elevations, that the minimum depth necessary, to the best of his knowledge and belief, to protect all fresh water zones is 175 ft. and operator agrees to set surface pipe at this location to a depth of not less than 200 ft. Alternate 1  Alternate 2  **LEBEN DRILLING, INC.**

REMARKS:

Signature of Operator *Doug Boyd*



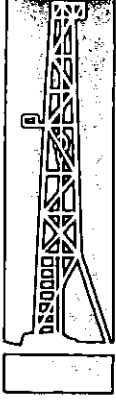
Place  
5¢  
Stamp  
Here

State Corporation Commission of Kansas  
Conservation Division  
500 Insurance Building  
212 North Market  
Wichita, Kansas 67202

RECEIVED  
STATE CORPORATION COMMISSION

MAY 2 - 1966  
5-2-66  
CONSERVATION DIVISION  
Wichita, Kansas

(IF PREFERRED, MAIL IN ENVELOPE)



DRILLING CONTRACTORS • OIL PRODUCERS

# LEBEN DRILLING, INC.

P. O. BOX 486

GREAT BEND, KANSAS

TELEPHONE GLADSTONE 3-4379

April 29, 1966

RECEIVED  
STATE CORPORATION COMMISSION

MAY 2 - 1966

CONSERVATION DIVISION  
WICHITA, KANSAS

State Corporation Commission  
Conservation Division  
500 Insurance Building  
212 North Market  
Wichita, Kansas 67202

Gentlemen:

Re: Intention to Drill (attached)

In November, 1965, we filed an intention to drill on the following locations: Drumm #1 C SW SE Sec. 30-32S-11W, Barber County, Kansas. This location was staked wrong and the actual drill site was as follows: Drumm #1, 120' East and 230' North of NW NW NE, Sec. 31-32S-11W, Barber County, Kansas. Attached is the corrected intent on this location and also the intent on the following location which we are preparing to move to: McClure #1 C SW SE Sec. 30-32S-11W, Barber County, Kansas.

We hope this will clarify the situation; however, if you have any questions, please contact the undersigned at Swift 3-5011, Great Bend, Kansas.

Very truly yours,

LEBEN DRILLING, INC.

*Doug Boyd*  
Doug Boyd  
Drilling Manager

DB:kr

Attachement

## NOTICE OF INTENTION TO DRILL

TO BE FILED WITH THE STATE CORPORATION COMMISSION PRIOR TO COMMENCEMENT OF WELL

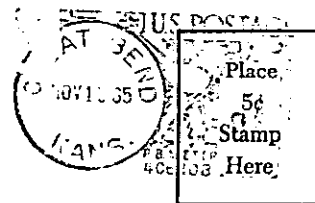
1. Operator Sioux Petroleum Address Medicine Lodge, Kansas
2. Lease name Drumm Well No. 1 County Barber
3. Well Location C SW SE Sec. 30 Township 32s Range 11w
4. Well to be drilled 660 ft. from nearest lease line.
5. Drilling Contractor Leben Drilling Inc. Address Box 486 Great Bend, Kansas
6. Type of equipment: Rotary  Cable Tool  Approx. date operation to begin Nov. 15 196 5.
7. Well to be drilled for Oil  Gas  Disposal  Input  Estimated Total Depth of Well 3700 ft.
8. Depth of deepest fresh water well within one mile of location 40' ft. If none exists, write NONE.
9. Ground elevation at location is approx. flat with ft. higher or xxxxxx than ground elevation at water well.
10. Depth of the deepest municipal water well within three miles of location \_\_\_\_\_ ft. If none exists, write NONE  
None
11. Operator states that he will set surface pipe at least 25 ft. below all Tertiary or unconsolidated deposits and, taking into consideration differences in ground elevations, that the minimum depth necessary, to the best of his knowledge and belief, to protect all fresh water zones is 175 ft. and operator agrees to set surface pipe at this location to a depth of not less than 200 ft. Alternate 1  Alternate 2 .

REMARKS:

Signature of Operator

Leslie Kite

CALL  
LEBEN  
FIRST



**State Corporation Commission of Kansas  
Conservation Division  
500 Insurance Building  
212 North Market  
Wichita, Kansas 67202**

**RECEIVED**  
STATE CORPORATION COMMISSION

NOV 16 1965  
11-16-65  
CONSERVATION DIVISION  
Wichita, Kansas

(IF PREFERRED, MAIL IN ENVELOPE)