

First  
**CORRECTED**

For KCC Use: 8-23-03  
Effective Date: \_\_\_\_\_  
District # \_\_\_\_\_  
SGA?  Yes  No

**KANSAS CORPORATION COMMISSION  
OIL & GAS CONSERVATION DIVISION  
NOTICE OF INTENT TO DRILL**

Form C-1  
December 2002  
**Form must be Typed  
Form must be Signed  
All blanks must be Filled**

Must be approved by KCC five (5) days prior to commencing well

Expected Spud Date October 6, 2003  
month day year

Spot  East  
Apex NE NW NW SE Sec. 30 Twp. 32 S. R. 11  West  
2420 feet from  N /  S Line of Section  
2150 feet from  E /  W Line of Section  
Is SECTION  Regular  Irregular?

OPERATOR: License# 33168 ✓  
Name: WOOLSEY OPERATING COMPANY, LLC  
Address: 125 N. Market, Suite 1000  
City/State/Zip: Wichita, Kansas 67202  
Contact Person: Dean Pattison  
Phone: 316-267-4379 ext 107

(Note: Locate well on the Section Plat on reverse side)  
County: Barber  
Lease Name: BENNETT Well #: 1  
Field Name: M=Clure

CONTRACTOR: License# 5929  
Name: Duke Drilling Co., Inc.

Is this a Prorated / Spaced Field?  Yes  No  
Target Information(s): Arbuckle

Well Drilled For: Well Class: Type Equipment:  
 Oil  Enh Rec  Infield  Mud Rotary  
 Gas  Storage  Pool Ext.  Air Rotary  
 OWWO  Disposal  Wildcat  Cable  
 Seismic; # of Holes  Other  
 Other

Nearest Lease or unit boundary: 660 (Unit see Att)  
Ground Surface Elevation: 1420' feet MSL

If OWWO: old well information as follows:  
Operator: \_\_\_\_\_  
Well Name: \_\_\_\_\_  
Original Completion Date: \_\_\_\_\_ Original Total Depth: \_\_\_\_\_

Water well within one-quarter mile:  Yes  No  
Public water supply well within one mile:  Yes  No

Directional, Deviated or Horizontal wellbore?  Yes  No  
If Yes, true vertical depth: \_\_\_\_\_  
Bottom Hole Location: \_\_\_\_\_  
KCC DKT #: \_\_\_\_\_

Depth to bottom of fresh water: 150'  
Depth to bottom of usable water: 180'

Surface Pipe by Alternate:  1  2  
Length of Surface Pipe Planned to be set: 200'

Length of Conductor Pipe required: n/a NONE  
Projected Total Depth: 4850'

Formation at Total Depth: Arbuckle  
Water Source for Drilling Operations:  
 Well  Farm Pond Other to be hauled

DWR Permit #: \_\_\_\_\_  
(Note: Apply for Permit with DWR )

Will Cores be taken?  Yes  No  
If Yes, proposed zone: \_\_\_\_\_

RECEIVED  
KANSAS CORPORATION COMMISSION  
8-1-03  
AUG 01 2003

**AFFIDAVIT**

The undersigned hereby affirms that the drilling, completion and eventual plugging of this well will comply with K.S.A. 55 et. seq.  
It is agreed that the following minimum requirements will be met:  
1. Notify the appropriate district office **prior** to spudding of well;  
2. A copy of the approved notice of intent to drill **shall be** posted on each drilling rig;  
3. The minimum amount of surface pipe as specified below **shall be set** by circulating cement to the top; in all cases surface pipe **shall be set** through all unconsolidated materials plus a minimum of 20 feet into the underlying formation.  
4. If the well is dry hole, an agreement between the operator and the district office on plug length and placement is necessary **prior to plugging**;  
5. The appropriate district office will be notified before well is either plugged or production casing is cemented in;  
6. If an ALTERNATE II COMPLETION, production pipe shall be cemented from below any usable water to surface within **120 days** of spud date.  
Or pursuant to Appendix "B" - Eastern Kansas surface casing order #133,891-C, which applies to the KCC District 3 area, alternate II cementing must be completed within 30 days of the spud date or the well shall be plugged. **In all cases, NOTIFY district office** prior to any cementing.

I hereby certify that the statements made herein are true and to the best of my knowledge and belief.  
Date: July 31, 2003 Signature of Operator or Agent: Debra K. Clingan Title: Production Secretary  
Debra K. Clingan

**For KCC Use ONLY**  
API # 15 - 007-22768-00-00  
Conductor pipe required NONE feet  
Minimum surface pipe required 200 feet per Alt. (1) &  
Approved by: RJP 8-18-03 / RJP 8-19-03  
This authorization expires: 2-18-04  
(This authorization void if drilling not started within 6 months of effective date.)  
Spud date: \_\_\_\_\_ Agent: \_\_\_\_\_

Remember to:  
- File Drill Pit Application (form CDP-1) with Intent to Drill;  
- File Completion Form ACO-1 within 120 days of spud date;  
- File acreage attribution plat according to field proration orders;  
- Notify appropriate district office 48 hours prior to workover or re-entry;  
- Submit plugging report (CP-4) after plugging is completed;  
- Obtain written approval before disposing or injecting salt water.  
- If this permit has expired (See: authorized expiration date) please check the box below and return to the address below.  
 Well Not Drilled - Permit Expired  
Signature of Operator or Agent: \_\_\_\_\_  
Date: \_\_\_\_\_

30  
32  
1/m

## IN ALL CASES PLOT THE INTENDED WELL ON THE PLAT BELOW

*Plat of acreage attributable to a well in a prorated or spaced field*

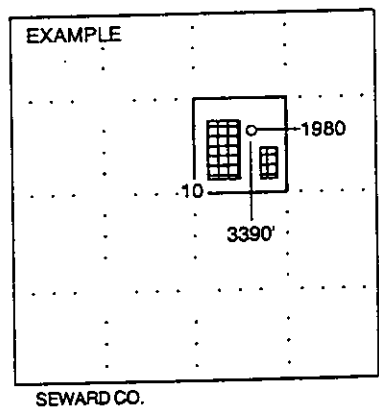
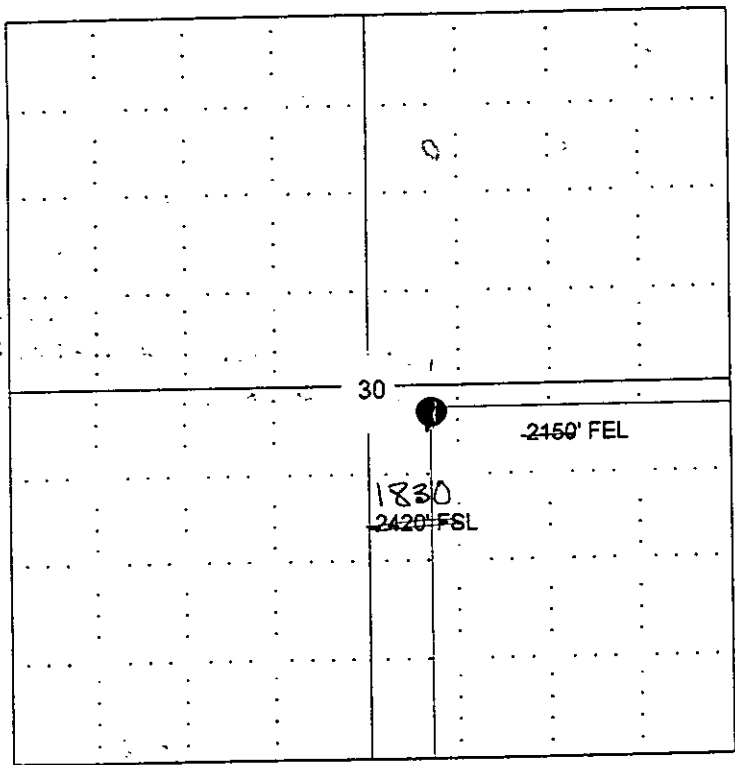
*If the intended well is in a prorated or spaced field, please fully complete this side of the form. If the intended well is in a prorated or spaced field complete the plat below showing that the well will be properly located in relationship to other wells producing from the common source of supply. Please show all the wells and within 1 mile of the boundaries of the proposed acreage attribution unit for gas wells and within 1/2 mile of the boundaries of the proposed acreage attribution unit for oil wells.*

API No. 15 - \_\_\_\_\_  
 Operator: WOOLSEY OPERATING COMPANY, LLC  
 Lease: BENNETT  
 Well Number: 1  
 Field: Aetna Gas Area  
 Number of Acres attributable to well: \_\_\_\_\_  
 QTR / QTR / QTR of acreage: SW NE

Location of Well: County: Barber  
2420' feet from  N /  S Line of Section  
2150' feet from  E /  W Line of Section  
 Sec. 30 Twp. 32 S. R. 11  East  West  
 Is Section:  Regular or  Irregular  
 If Section is Irregular, locate well from nearest corner boundary.  
 Section corner used:  NE  NW  SE  SW

### PLAT

(Show location of the well and shade attributable acreage for prorated or spaced wells.)  
 (Show footage to the nearest lease or unit boundary line.)



**NOTE:** In all cases locate the spot of the proposed drilling location.

In plotting the proposed location of the well, you must show:

1. The manner in which you are using the depicted plat by identifying section lines, i.e. 1 section, 1 section with 8 surrounding sections; 4 sections, etc.
2. The distance of the proposed drilling location from the section's south / north and east / west.
3. The distance to the nearest lease or unit boundary line.
4. If proposed location is located within a prorated or spaced field a certificate of acreage attribution plat must be attached: (CO-7 for oil wells; CG-8 for gas wells).



OIL AND GAS LEASE

REGISTERED AUG 15 2003

ADDITIONAL: Made and entered into this 7th day of October, 1999

By and between: Richard M. Toland, et al and KANSAS CORPORATION COMMISSION

wherein address is: J. Paul Bunker, Inc., 125 N. Market #415 Wichita, KS. 67202

Section 30: SW/4 & NW/4 & SW/4 Section 31: NW/4

Conservation Division, 8330 Colfax, Suite 101, Wichita, KS 67202

Conservation Division, 8330 Colfax, Suite 101, Wichita, KS 67202

Conservation Division, 8330 Colfax, Suite 101, Wichita, KS 67202

Conservation Division, 8330 Colfax, Suite 101, Wichita, KS 67202

Conservation Division, 8330 Colfax, Suite 101, Wichita, KS 67202

Conservation Division, 8330 Colfax, Suite 101, Wichita, KS 67202

Conservation Division, 8330 Colfax, Suite 101, Wichita, KS 67202

Conservation Division, 8330 Colfax, Suite 101, Wichita, KS 67202

Conservation Division, 8330 Colfax, Suite 101, Wichita, KS 67202

Conservation Division, 8330 Colfax, Suite 101, Wichita, KS 67202

Conservation Division, 8330 Colfax, Suite 101, Wichita, KS 67202

OIL AND GAS LEASE

REGISTERED AUG 15 2003

ADDITIONAL: Made and entered into this 10th day of December, 1999

By and between: Robert M. Doby, Robert W. Doby, and Robert W. Doby, Co-Trustees of the Bailey Family Trust, referred to and created under the last will and testament of I.M. Bailey & Bertha M. Bailey, dec'd

wherein address is: C/O Robert M. Doby, 8330 Colfax, Suite 101, Wichita, KS. 67202

Section 30: SW/4 & NW/4 & SW/4 Section 31: NW/4

Conservation Division, 8330 Colfax, Suite 101, Wichita, KS 67202

Conservation Division, 8330 Colfax, Suite 101, Wichita, KS 67202

Conservation Division, 8330 Colfax, Suite 101, Wichita, KS 67202

Conservation Division, 8330 Colfax, Suite 101, Wichita, KS 67202

Conservation Division, 8330 Colfax, Suite 101, Wichita, KS 67202

Conservation Division, 8330 Colfax, Suite 101, Wichita, KS 67202

Conservation Division, 8330 Colfax, Suite 101, Wichita, KS 67202

Conservation Division, 8330 Colfax, Suite 101, Wichita, KS 67202

Conservation Division, 8330 Colfax, Suite 101, Wichita, KS 67202

Conservation Division, 8330 Colfax, Suite 101, Wichita, KS 67202

Conservation Division, 8330 Colfax, Suite 101, Wichita, KS 67202

OIL AND GAS LEASE

REGISTERED AUG 15 2003

ADDITIONAL: Made and entered into this 10th day of December, 1999

By and between: Robert M. Doby, Robert W. Doby, and Robert W. Doby, Co-Trustees of the Bailey Family Trust, referred to and created under the last will and testament of I.M. Bailey & Bertha M. Bailey, dec'd

wherein address is: C/O Robert M. Doby, 8330 Colfax, Suite 101, Wichita, KS. 67202

Section 30: SW/4 & NW/4 & SW/4 Section 31: NW/4

Conservation Division, 8330 Colfax, Suite 101, Wichita, KS 67202

Conservation Division, 8330 Colfax, Suite 101, Wichita, KS 67202

Conservation Division, 8330 Colfax, Suite 101, Wichita, KS 67202

Conservation Division, 8330 Colfax, Suite 101, Wichita, KS 67202

Conservation Division, 8330 Colfax, Suite 101, Wichita, KS 67202

Conservation Division, 8330 Colfax, Suite 101, Wichita, KS 67202

Conservation Division, 8330 Colfax, Suite 101, Wichita, KS 67202

Conservation Division, 8330 Colfax, Suite 101, Wichita, KS 67202

Conservation Division, 8330 Colfax, Suite 101, Wichita, KS 67202

Conservation Division, 8330 Colfax, Suite 101, Wichita, KS 67202

Conservation Division, 8330 Colfax, Suite 101, Wichita, KS 67202

OIL AND GAS LEASE

REGISTERED AUG 15 2003

ADDITIONAL: Made and entered into this 10th day of December, 1999

By and between: Robert M. Doby, Robert W. Doby, and Robert W. Doby, Co-Trustees of the Bailey Family Trust, referred to and created under the last will and testament of I.M. Bailey & Bertha M. Bailey, dec'd

wherein address is: C/O Robert M. Doby, 8330 Colfax, Suite 101, Wichita, KS. 67202

Section 30: SW/4 & NW/4 & SW/4 Section 31: NW/4

Conservation Division, 8330 Colfax, Suite 101, Wichita, KS 67202

Conservation Division, 8330 Colfax, Suite 101, Wichita, KS 67202

Conservation Division, 8330 Colfax, Suite 101, Wichita, KS 67202

Conservation Division, 8330 Colfax, Suite 101, Wichita, KS 67202

Conservation Division, 8330 Colfax, Suite 101, Wichita, KS 67202

Conservation Division, 8330 Colfax, Suite 101, Wichita, KS 67202

Conservation Division, 8330 Colfax, Suite 101, Wichita, KS 67202

Conservation Division, 8330 Colfax, Suite 101, Wichita, KS 67202

Conservation Division, 8330 Colfax, Suite 101, Wichita, KS 67202

Conservation Division, 8330 Colfax, Suite 101, Wichita, KS 67202

Conservation Division, 8330 Colfax, Suite 101, Wichita, KS 67202



15-007-22768-0000



**WOOLSEY OPERATING COMPANY, LLC**

125 NORTH MARKET, SUITE 1000, WICHITA, KANSAS 67202-1775 (316) 267-4379  
FAX (316) 267-4383

RECEIVED  
KANSAS CORPORATION COMMISSION

AUG 15 2003  
8-15-03  
CONSERVATION DIVISION  
WICHITA, KS

*Via Hand Delivery*

August 15, 2003

Mr. Robert Petersen  
Kansas State Corporation Commission  
Oil & Gas Conservation Division  
130 South Market, Room 2078  
Wichita, Kansas 67202

RE: Bennett #1 Drillsite Location  
2420' FSL, 2150' FEL  
Section 30-T32S-R11W  
Barber County, Kansas

Dear Mr. Petersen:

As requested, enclosed are the Oil and Gas Leases from the six mineral interest owners for the drillsite location described above. As you will note, the leases cover, among other lands, the SW/4 NE/4 of Section 30.

Sincerely,

**WOOLSEY OPERATING COMPANY, LLC.**

Ava Ross  
Land & Contract Administrator

encl. (6)