

1050159

To: STATE CORPORATION COMMISSION
CONSERVATION DIVISION - PLUGGING SECTION
200 COLORADO DERBY BUILDING
WICHITA, KANSAS 67202

API NUMBER 15- 007-21,312 -0000
NE 1/4 NW 1/4 SE 1/4, SEC. 14, T 32 S, R 15 W/EX

330 feet from N/SX section line

990 feet from W/EX section line

TECHNICIAN'S PLUGGING REPORT

Operator License # 8653

Lease Name Larkin Well # R-2

Operator: Petroleum Technologies, Inc.

County Barber

Name: Address 4005 East Kellogg

Well Total Depth 5127 166.62 feet

Wichita, KS 67202

Conductor Pipe: Size feet

Surface Casing: Size 8 5/8 feet 428

Abandoned Oil Well X Gas Well Input Well SWD Well D&A

Other well as hereinafter indicated

Plugging Contractor Clarke Corporation License Number 5105

Address 107 West Fowler, Medicine Lodge, KS 67104

Company to plug at: Hour: 8:00 am Day: 1 Month: March Year: 19 84

Plugging proposal received from Elmo Morgenstern

(company name) Clarke Corporation (phone) 316-886-5665

were: 5 1/2 set at 5216' CIBP at 4980' Perf 4593'

1st plug sand back to 4540 and dump 5 sx cement on top of sand

2nd plug pump through head with 3 sx hulls, 15 sx gel, 50 sx cement, 10 sx gel, 1 sack

hulls and release 8 5/8" rubber plug and pump an additional 100 sx cement

Maximum pressure 400# and shut-in pressure 300#

Plugging Proposal Received by Richard W. Lacey (TECHNICIAN)

Plugging Operations attended by Agent?: All Part None X

Operations Completed: Hour: 10:15 am Day: 1 Month: March Year: 19 84

ACTUAL PLUGGING REPORT 5 1/2 set at 4216' CIBP at 4980' Perf 4593'

1st plug sanded back to 4540' and dumped 5 sx cement on top of sand

2nd plug pumped through head with 3 sx hulls, 15 sx gel, 50 sx cement, 10 sx gel, 1 sack

hulls and released 8 5/8" rubber plug and pumped an additional 100 sx cement

Maximum pressure 400# and shut-in pressure 300#

Remarks: Use 60/40 Pozmix 2% gel 3% cc by Sun. They recovered 3500' of 5 1/2" casing.
(If additional description is necessary, use BACK of this form.)

INVOICED

DATE 3-12-84

0681 3-1

RECEIVED
STATE CORPORATION COMMISSION
Signed Richard W. Lacey (TECHNICIAN)
MAR 07 1984
3-7-84
CONSERVATION DIVISION
Wichita, Kansas

Schlumberger

DUAL INDUCTION - GR

CSU Field Log

COMPANY: WILD BOYS LAND CATTLE AND OIL CO.
 WELL: HELL AINT READY FOR US YET #1
 FIELD: WILDCAT
 COUNTY: BARBER
 STATE: KANSAS
 LOCATION: NE NW SE
 SEC: 14 TWP: 32S RGE: 15W

OTHER SERVICES-
 FDC CHL GR
 CYBERLOOK

PERMANENT DATUM: GL ELEVATIONS-
 ELEV. OF PERM. DATUM: 2016.0' KB: 2032.0'
 LOG MEASURED FROM: KB DF:
 16.0' ABOVE PERM. DATUM GL: 2016.0'
 DRLG. MEASURED FROM: KB
 DATE: 26 NOV 1981
 RUN NO: 1

PROGRAM
 TAPE NO:
 20.2
 SERVICE
 ORDER NO:
 251905

DEPTH-DRILLER: 5225.0'
 DEPTH-LOGGER: 5226.0'
 BTM. LOG INTERVAL: 5220.0'
 TOP LOG INTERVAL: 430.0'
 CASING-DRILLER: 428'
 CASING-LOGGER: 430'
 CASING: 8 5/8
 BIT SIZE: 7 7/8

RECEIVED
 STATE CORPORATION COMMISSIONER
 MAR 26 1982
 3-26-82
 CONSERVATION DIVISION
 Wichita, Kansas

TYPE FLUID IN HOLE:	CHEMICAL	
DENSITY:	9.3 LB/G	
VISCOSITY:	60.0 S	
PH:	9.0	
FLUID LOSS:	9.8 CC	
SOURCE OF SAMPLE:	FLOWLINE	
RM:	0.575 OHMM	AT 52.0 DF
RMF:	0.300 OHMM	AT 62.0 DF
RMC:	0.863 OHMM	AT 52.0 DF
SOURCE RMF/RMC:	PRESS/CALC	
RM AT BHT:	0.273 OHM	AT 117. DF
RMF AT BHT:	0.166 OHM	AT 117. DF
RMC AT BHT:	0.410 OHM	AT 117. DF
TIME CIRC. STOPPED:	18:30	
TIME LOGGER ON BTM.:	21:30	
MAX. REC. TEMP:	117.0 DF	

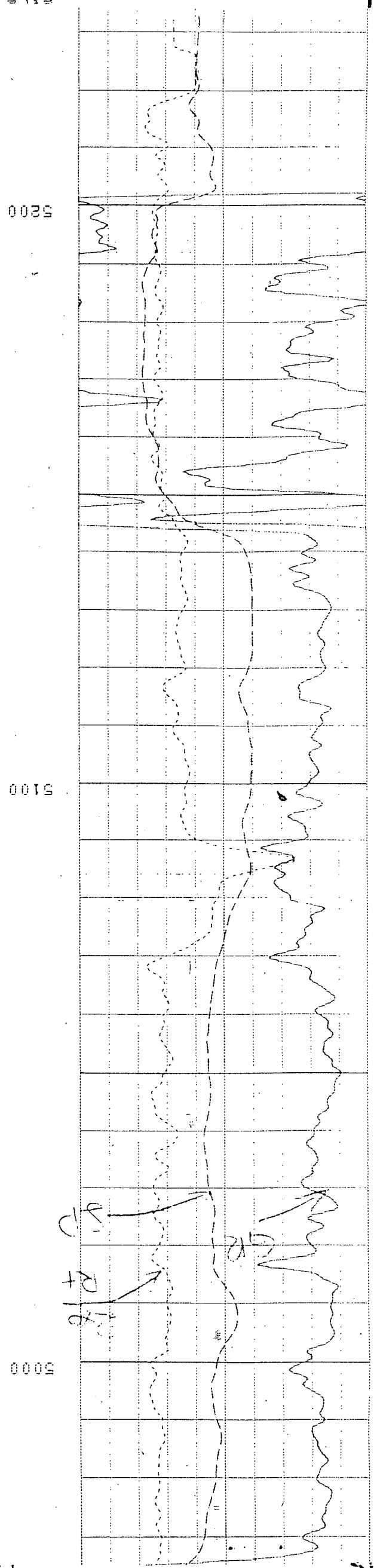
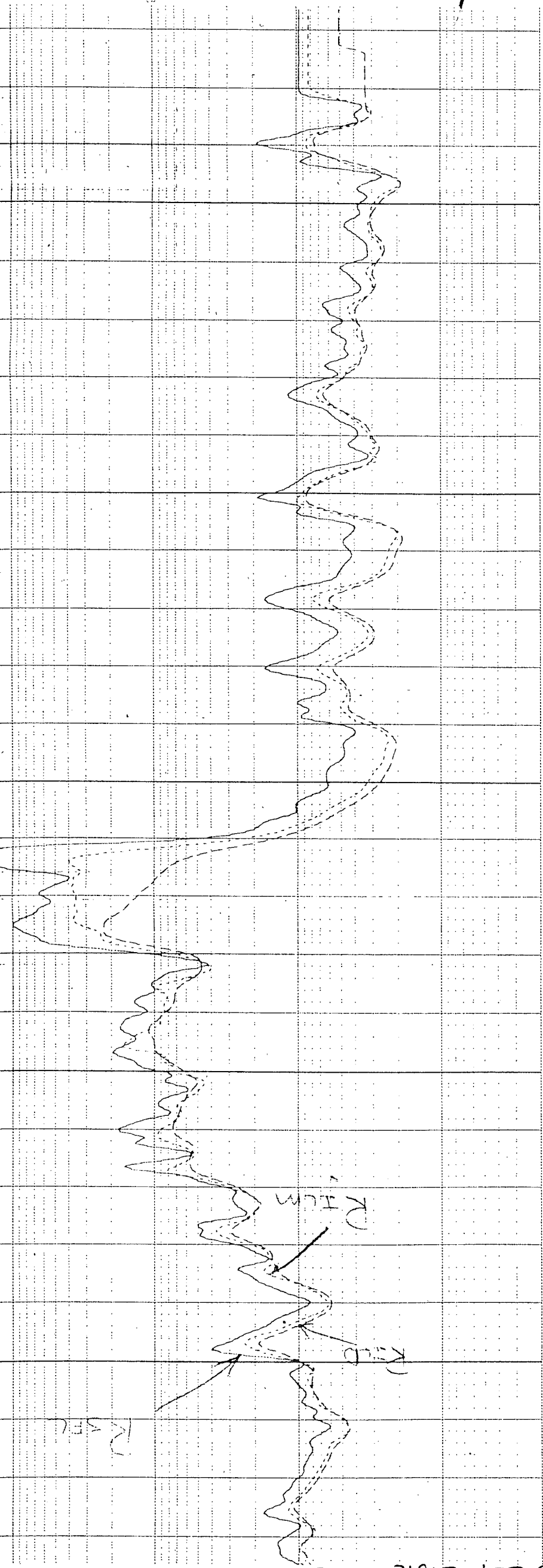
LOGGING UNIT NO: 7267
 LOGGING UNIT LOC: WICHITA
 RECORDED BY: BAUER/SALAZAR
 WITNESSED BY: DAVE BARKER

REMARKS:

CHLORIDES 15000

EQUIPMENT NUMBERS-

15-007-21312-0000



15-007-21312-0000