

STATE OF KANSAS
STATE CORPORATION COMMISSION
CONSERVATION DIVISION
200 Colorado Derby Building
Wichita, Kansas 67202

FORM CP-1
Rev. 03/92

RECEIVED

MAY 01 2002

WELL PLUGGING APPLICATION FORM
(PLEASE TYPE FORM and File ONE Copy)

15-015-19044-0000

API # Drilled in 1953 (Identifier number of this well). This must be listed for wells drilled since 1967; if no API# was issued, indicate spud or completion date.

KCC WICHITA

WELL OPERATOR Dunne Equities Operating, Inc. KCC LICENSE # 32166
(owner/company name) (operator's)

ADDRESS 8100 E. 22nd Street North #1100 CITY Wichita,

STATE Kansas ZIP CODE 67226=2311 CONTACT PHONE # (316) 684 6508

LEASE Koogler WELL# 104 SEC. 29 T. 26S R. 5E (East/West)

- SW - NE - NW SPOT LOCATION/QQQQ COUNTY Butler

000 FEET (in exact footage) FROM S (N) (circle one) LINE OF SECTION (NOT Lease Line)

1650 FEET (in exact footage) FROM E (W) (circle one) LINE OF SECTION (NOT Lease Line)

Check One: OIL WELL GAS WELL D&A SWD/ENHR WELL DOCKET#

CONDUCTOR CASING SIZE SET AT CEMENTED WITH SACKS

SURFACE CASING SIZE 8 5/8 SET AT 102 CEMENTED WITH 70 SACKS

PRODUCTION CASING SIZE 5 1/2 SET AT 2627 CEMENTED WITH 100 SACKS

LIST (ALL) PERFORATIONS and BRIDGEPLUG SETS: 2591-2620, 2595-2603, 2570-86

ELEVATION 1320 KB T.D. 2631 PBTD ANHYDRITE DEPTH
(G.L./K.B.) (Stone Corral Formation)

CONDITION OF WELL: GOOD POOR CASING LEAK JUNK IN HOLE

PROPOSED METHOD OF PLUGGING KCC Specifications

(If additional space is needed attach separate page)

IS WELL LOG ATTACHED TO THIS APPLICATION AS REQUIRED? Yes IS ACO-1 FILED? No

If not explain why?

PLUGGING OF THIS WELL WILL BE DONE IN ACCORDANCE WITH K.S.A. 55-101 et. seq. AND THE RULES AND REGULATIONS OF THE STATE CORPORATION COMMISSION.

LIST NAME OF COMPANY REPRESENTATIVE AUTHORIZED TO BE IN CHARGE OF PLUGGING OPERATIONS:

Rick Maddux PHONE# (316) 651 6023

ADDRESS 507 S. Washington City/State el Dorado, KS 67042

PLUGGING CONTRACTOR United Cementing & Acid Co., Inc. KCC LICENSE # 30437
(company name) (contractor's)

ADDRESS P. O. Box 712, El Dorado, KS 67042 PHONE # (316) 321 4680

PROPOSED DATE AND HOUR OF PLUGGING (If Known?) ASAP

PAYMENT OF THE PLUGGING FEE (K.A.R. 82-3-118) WILL BE GUARANTEED BY OPERATOR OR AGENT

DATE: 4-30-02 AUTHORIZED OPERATOR/AGENT: [Signature]
(signature)



Kansas Corporation Commission

Bill Graves, Governor John Wine, Chair Cynthia L. Claus, Commissioner Brian J. Moline, Commissioner

NOTICE OF RECEIPT OF WELL PLUGGING APPLICATION (CP-1)

Dunne Equities Operating, Inc.
8100 E. 22nd St. No #1100
Wichita, KS 67226-2311

May 08, 2002

Re: KOOGLER #104
API 15-015-19044-00-00
SWNENW 29-26S-5E, 990 FNL 1650 FWL
BUTLER COUNTY, KANSAS

Dear Operator:

This letter is to notify you that the Conservation Division is in receipt of your plugging proposal, form CP-1, for the above-captioned well.

Your CP-1 has been reviewed by the Conservation Division central office for completeness and to verify license numbers. The plugging proposal will now be forwarded to the district office listed below for review of your proposed method of plugging.

Please contact the district office for approval of your proposed plugging method at least five (5) days before plugging the well, pursuant to K.A.R. 82-3-113 (b). If a workover pit will be used during the plugging of the well it must be permitted. A CDP-1 form must be filed and approved prior to the use of the pit.

The Conservation Division's review of form CP-1, either in the central or district office, does not include an inquiry into well ownership or the filing operator's legal right to plug the well.

This notice in no way constitutes authorization to plug the above-captioned well by persons not having legal rights of ownership or interest in the well. This notice is void after ninety (90) days from the above date.

District: #2
130 S. Market, Room 2125
Wichita, KS 67202-3208
(316) 337-6231

Sincerely,
A handwritten signature in cursive script that reads "David P. Williams".

David P. Williams
Production Supervisor

Corelogging Incorporated

BOX 5031 FARLEY STATION



TELEPHONE Windsor 2-1608

OKLAHOMA CITY 7, OKLAHOMA

RECEIVED

July 16, 1953

MAY 0 1 2002

KCC WICHITA

File: OC-1-114
Re: Core Analysis
Magnolia Petroleum Company
M. A. Koogler No. 104
Eldorado Field
Butler County, Kansas

Magnolia Petroleum Company
Box 34
Eldorado, Kansas

Attention: Mr. Hubert Walker

Gentlemen:

Submitted herewith are tabulated and plotted results of core analysis performed on 39 samples from the subject well.

Oil to water contact is shown by the analysis at 2619. Possible water invaded zone is located from 2609 - 2614. The remainder of the section cored is interpreted as oil productive where permeable.

The averages of the data obtained for the points marked "oil" are stated at the base of the coregraph. Estimated connate water saturation is stated at the base of the coregraph.

Yours very truly,

CORELOGGING INCORPORATED

Robert E. Chandler

REC: jhh

RECEIVED

MAY 01 2002

NCC WICHITA

SECTION NO. 1 - PRODUCTION DATA:

Viola Oil Well Completion - Pumping:

Production test completed on August 3, 1953, in the Viola Lime Formation, top 2569', bottom 2587', perforated with 64 Kone Shots from 2570' to 2586' and the Simpson Sand Formation, top 2607', bottom 2604', perforated with 32 Kone Shots from 2595' to 2603'. Well pumped on 24 hour test at the rate of 50 barrels oil, 168 barrels water, per day. 2" x 8' working barrel set at 2588'. 2" tubing, 3/4" rods, 48" stroke, 19 s.p.m. Allowable 100%. Gravity 33.8.

SECTION NO. 2 - FORMATION SUMMARY:

FORMATION	FROM	TO	CORE NO.	GR-N LOG NO.	ELECTRO-PHOTO LOG NO.	REMARKS
Lime, Viola	2569'	2587'	1 & 2	1	1	
Sand, Simpson	2587'	2623'	2	1	1	
Red Rock	2628'	2631'	2			

SECTION NO. 3 - DEPTH MEASUREMENTS:

	DRILLERS DEPTH	STEEL LINE	GR-N LOG	PERF. LINE	ELECTRO-PHOTO LOG	FT. PLUS OR MINUS	K.B. TO SURFACE	SURFACE ELEVATION
Drilling Depth	1000'	1000'				-	4'	996'
" "	1500'	1500'				-	4'	1496'
" "	2500'	2500'				-	4'	2496'
Casing Seat	2631'					-	4'	2627'
Casing Seat			2627'	2627'		None	None	2627'
Total Depth	2631'					-	4'	2627'
Total Depth			2627'			None	None	2627'
Electro-Photo T.D.	2606'					None	None	2606'
" " "					2605'	None	None	2605'
Plug Back T.D.	2604'					-	4'	2600'
Perforations				2620'		None	None	2620'
"				2503'		-	4'	2597'
"				2586'		-	4'	2582'

SECTION NO. 5 - PERFORATING AND SQUEEZE RECORD:

FORMATION	Perforations				TOOL SET @	CMT. USED	MAX. PRESS.	TOP PLUG	DRILD. PLUG TO.
	FROM	TO	NO.	SIZE					
Sand, Simpson	2595'*	2624'*	116	Kone Shots -	2620'				
Sand, Simpson	2595'	2603'	32	Kone Shots -	2603'				
Lime, Viola	2570'	2586'	64	Kone Shots	2586'				
Sand, Simpson	2595'	2616'				100 sax	2500#	2575'	2604'

* Corrected from G.L.M. as shown on Lane-Wells Perforating Record to K.B.M. (4' Correction)

SECTION NO. 6 - SURVEYS PERFORMED:

NO.	TYPE	FROM	TO
1	Lane-Wells Gamma-Ray-Neutron Log	0'	2625' G.L.M.
1	Howell Photo-Electro Log	0'	2605' G.L.M.

WELL SURVEY SUMMARY:

NO.	DEPTH	DEG. OF VERTICAL
1	1000'	1
2	1500'	1/2
3	1500'	1/2
4	2500'	1/2
5	2500'	1/2

April 1953

MAGNOLIA PETROLEUM COMPANY
WELL RECORD

X-1317

Total Depth Drilled 2631'
Casing String Set 2631'
Plug Back Depth 2601'
Vertical or Directional Hole Vertical
County Butler State Kansas
Section 22 Township 26S Range 5E
Location of Well: 990' F.H.L., 1650' F.H.L., 111/4

RECEIVED
MAY 0 1 2002
KCC WICHITA
PRODUCING OIL WML

Lease Name A. Koehler
Well No. 104
Field El Dorado
District El Dorado

State Reg. District Eight (8) miles from El Dorado, Kansas
Distance From Nearest Town

DATE SUMMARY	Date	Work Performed By	Remarks
Location Staked	6-19-53	Civil Engineering Dept.	
Dir. Pits	6-27-53	Brack Drlg. Co., Inc, Wichita, Kan.	
Commenced Erecting Derrick			Portable Drlg. Rig
Completed Erecting Derrick			Portable Drlg. Rig
Commenced Rigging Up	7-4-53	Brack Drlg. Co., Inc, Wichita, Kan.	Portable Drlg. Rig
Initial Rigging Up Completed	7-4-53	Brack Drlg. Co., Inc, Wichita, Kan.	Portable Drlg. Rig
Commenced Drilling (Spud Date)	6-27-53	Brack Drlg. Co., Inc, Wichita, Kan.	
Completed Drilling (Total Depth)	7-12-53	Brack Drlg. Co., Inc, Wichita, Kan.	
Moved In Cable Tools	7-14-53	Brack Drlg. Co., Inc, Wichita, Kan.	
Casing String Casing Set	7-12-53	Brack Drlg. Co., Inc, Wichita, Kan.	
Plug Back (Final)	7-24-53	Brack Drlg. Co., Inc, Wichita, Kan.	
Perforations (Final)	7-26-53	Brack Drlg. Co., Inc, Wichita, Kan.	
Completed Subsurface Installations (Final)	7-26-53	Brack Drlg. Co., Inc, Wichita, Kan.	
Completed Well Head Installations (Final)	7-27-53	Brack Drlg. Co., Inc, Wichita, Kan.	
Commenced Bringing in (Final)	7-14-53	Brack Drlg. Co., Inc, Wichita, Kan.	
Well Cleaned (Final)	7-26-53	Brack Drlg. Co., Inc, Wichita, Kan.	
Commenced Abandonment			
Completed Abandonment			

Insert the first work started, as; Build Road, Build Board Road and Turn around, Dig Canal, Clear and/or Grade Location, Lay fuel and Water Lines
Dig Slush Pit, Build Rig Foundation, or, Install Drilling Foundation.

NO. DAYS WATER USED NONE SOURCE Furnished by Contractor
NO. DAYS FUEL USED NONE : KIND NONE : SOURCE Furnished by Contractor

Measuring Point Will Be Ground 1320 Cor. Kelly Bushing Kelly Bushing to Surface Csg.
Kelly Drive Bushing. Elevation 1321 To Gr. Elev. 4' Surface Csg. Flg. NONE Flange Elev. NONE

Transfer No. In: 0500-0523-CASING, TUBING, & * CEMENTING RECORD Transfer No. Out:

Size	Weight	Collars & Threads	Kind	Rge	Jts.	Total Feet Less Threads			Total No. Scratchers and Where Placed	Total No. Centralizers and Where Placed
						Put In	Pulled	Left In		
5/8"	20#	5 1/2" 8V	L.W.	1	2					
5/8"	20#	6" 8V	L.W.	1	3	102'			None	None
5/8"	Surface casing set at 102' G.L.M., cemented with 70 sacks regular portland cement, circulated from bottom to top. W.O.C. 48 hours.								14# Slurry	
1 1/2"	17#	6-3/4" 3 Rd.	P-25 L.W.	1	114-1 Pc.	2627'			None	3 - 1 0 2471' 1 0 2516' 1 0 2562'
1 1/2"	Casing set at 2631' K.B.M., cemented with 100 sacks regular portland cement. not known. W.O.C. 65 hours. (14# Slurry Cement)									Top of cement
"	4.7#	8 Rd.	B.U.E. ss-J-55 Tubing	2	84	2580'				

Casing Set @ 2627 (100 sacks)
Perf Samp 2591 to 2620
Plug back to 2606 Plug back to 2595
Perf 2595 to 2603 Could not breakdown
Perf Vials 2570-56
Set Baker Production Tester 2590-93
P.O.P. Tested 50 Oil 168 Water 29 hrs
7/27/53
No further information
Well No 104 (Rotary)

Following each string of casing, and using the full width of the sheet, give complete cement
and kind of Additives, Stages of Cementing, Cement Tops, Slurry weight per Gal. and
to the balance of Well Record by sections, in the order listed below, carefully following in
of this sheet and subsequent sheets on Form X-6727 As needed.

- Section 1- Production Tests and Potential Test Data
- Section 2- Formation Summary
- Section 3- Depth Measurements
- Section 4- Drill Stem Tests
- Section 5- Perforating and Squeeze Record
- Section 6- Surveys Performed

RECEIVED
MAY 01 2002
KCC WICHITA

SECTION NO. 7 - CORE RECORD:

NO.	FROM	TO	THICK.	DESCRIPTION
1	2570'	2586'	16'	Dolomite, with sat. & str. of oil.
	2575'	2586'		
2	2586'	2631'	45'	Dolomite, with sat. & str. of oil. Top of Simpson Sand at 2587'. Dolomite, sandy with saturation and stain. Sandstone, med. grain with staining. Dolomitic sand, with spotted saturation and staining. Sand, fine to med. grain w/spotted to sat. staining. Sandstone, argill. No show of oil. Shale, silty, green. Red rock.
	2586'	2587'		
	2587'	2589'		
	2589'	2592'		
	2592'	2595'		
	2595'	2623'		
	2623'	2624'		
	2624'	2628'		
	2628'	2631'		

SECTION NO. 8 - Bit Record:

NO.	SIZE	DRAW OR RPM	FROM	TO	NO. FT. DRILL.
1	7-7/8"	Rock	102'	360'	258'
2	7-7/8"	Rock	360'	1200'	840'
3	7-7/8"	Rock	1200'	1730'	530'
4	7-7/8"	Rock	1730'	2120'	390'
5	7-7/8"	Rock	2120'	2470'	350'
6	7-7/8"	Rock	2470'	2570'	100'
7	7-7/8"	Rock	2570'	2631'	61'

SECTION NO. 9 - ACIDIZING RECORD:

VOLUME	LIQUID	FORMATION	TOP	BOTTOM	PERFORATIONS		PRESSURE	
					FROM	TO	INIT.	BEFORE
100 Gals.	Mud Acid	Simpson Sand	2587'	2620'	2591'	2620'		
500 Gals.	Mud Acid	Simpson Sand	2587'	2606'	2591'	2606'	500#	to Vacuum
250 Gals.	15%	Simpson Sand	2587'	2604'	2595'	2603'	500#	to Vacuum

SECTION NO. 10 - SUMMARY OF OPERATIONS:

1. Drilling and Exploratory Operations Performed:

- 7-11-53 - Core No. 1
- 7-11-53-7-12-53 - Core No. 2
- 7-16-53 - Lane Walls Gamma Ray-Neutron Log No. 1
- 7-22-53 - Dowell Electro-Photo Log No. 1

2. Completion Operations Performed:

7-14-53 to 7-27-53, incl.

Moved in and rigged up Contract Cable Tools. Bailed hole, drilled out cement, plug to 2628'. Perforated 5-1/2" casing in Simpson Sand Formation with 116 Kono Shots from 2591' GRM to 2620' GRM. Bailing test made 130 gals. water, show of oil, per hour. Ran Lane Walls Gamma Ray-Neutron Log No. 1. Pumped 100 gallons mud acid to clean out perforations. Bailing test made 42 gallons water, slight show of oil, per hour. Bailing test after letting mud acid sit 4 hours, made 65 gallons water per hour for 2 hours, 56 gallons water per hour for 3 hours and 60 gallons water per hour for 2 hours. Plugged back from 2628' to 2606' GRM with 4 sacks cement. Bailing test after plug made 3-1/2 gallons water, slight show of oil, per hour. Acidized Simpson Sand Formation with 500 gallons mud acid, 60 barrels water lead, under 500# pressure, broke down to vacuum. Made 12 barrels water, slight show of oil, per hour. 2 1/2 hour swabbing test made 36 barrels water, 24 barrels water. Drilled out cement to 2616' GRM. Ran tubing with retainer plug set at 2616' GRM. Pumped off perforations from 2595' to 2616' GRM with 100 sacks cement, under 500# pressure. Ran Dowell Photo-Electro Log No. 1. Drilled out cement and retainer plug to 2616' GRM. Perforated 5-1/2" casing in Simpson Sand Formation from 2595' to 2603' GRM with 32 Kono Shots. Bailing test made 1 gallon water per hour before acidizing. Acidized with 250 gallons mud acid, 60 barrels lead water, under 500# pressure, broke down to vacuum. Swabbed back water and made 50 gals. water, 4 gals. oil in 5 hrs. Could not swab down. Perforated 5-1/2" casing in Simpson Sand Formation from 2570' to 2586' GRM with 64 Kono Shots. Set Baker Production Plug at 2570' to 2593' GRM. Ran tubing, rod and pit well to purging. Well Complete.

SECTION NO. 11 - FORMATION RECORD:

<u>FORMATION</u>	<u>TOP</u>	<u>BOTTOM</u>	<u>REMARKS</u>
Soil	0	1	
Lime	1	90	
Shale	90	95	
Lime	95	102	
Lime and Chert	102	192	8-5/8" Surf. Csg. set at 102 GLM, cemented with 70 sax.
Lime	192	325	
Lime and Shale	325	2570	Top Viola Lime at 2569'.
Cored with Rotary	2570	2631	
Core No. 1	2570	2586	
Dolomite with saturation and stn. of oil	2570	2586	
Core No. 2	2586	2631	
Dolomite with saturation and stn. of oil	2586	2587	Top of Simpson Sand at 2587'
Dolomite, sandy with sat. & stain	2587	2589	
Sandstone med grain with staining	2589	2592	
Dolomitic sand w/spotted sat. & staining	2592	2595	
Sand, fine to med gr. with spotted to saturated staining	2595	2623	
Sandstone, argill. No. show of oil	2623	2624	
Shale, silty, green	2624	2628	
Red rock	2628	2631	5-1/2" csg. set at 2631' KBM
TOTAL DEPTH	2631 KBM		
PLUG BACK TOTAL DEPTH	2604 KBM		

Perf. 2591-2620 w/116 cone sh., bailed 130 GWPH w/SSO, 3hrs.
 PB 2606, acidized w/500 Gals., swb 15 BO & 106 BW in 12 hrs.
 Sq. perf. 2591-2606 w/100 sacks.
 PB 2604, perf. 2595-2603 w/32 sh., acidized w/250 gals.
 Swb 4 BO & 58 BW in 5 Hrs.
 Perf. 2570-86 w/64 cone sh., P 50 BO & 168 BW in 24 Hrs.

RECEIVED

MAY 01 2002

KCC WICHITA

Corelogging Incorporated

BOX 5031 FARLEY STATION

TELEPHONE Windsor 2-1608

OKLAHOMA CITY 7, OKLAHOMA

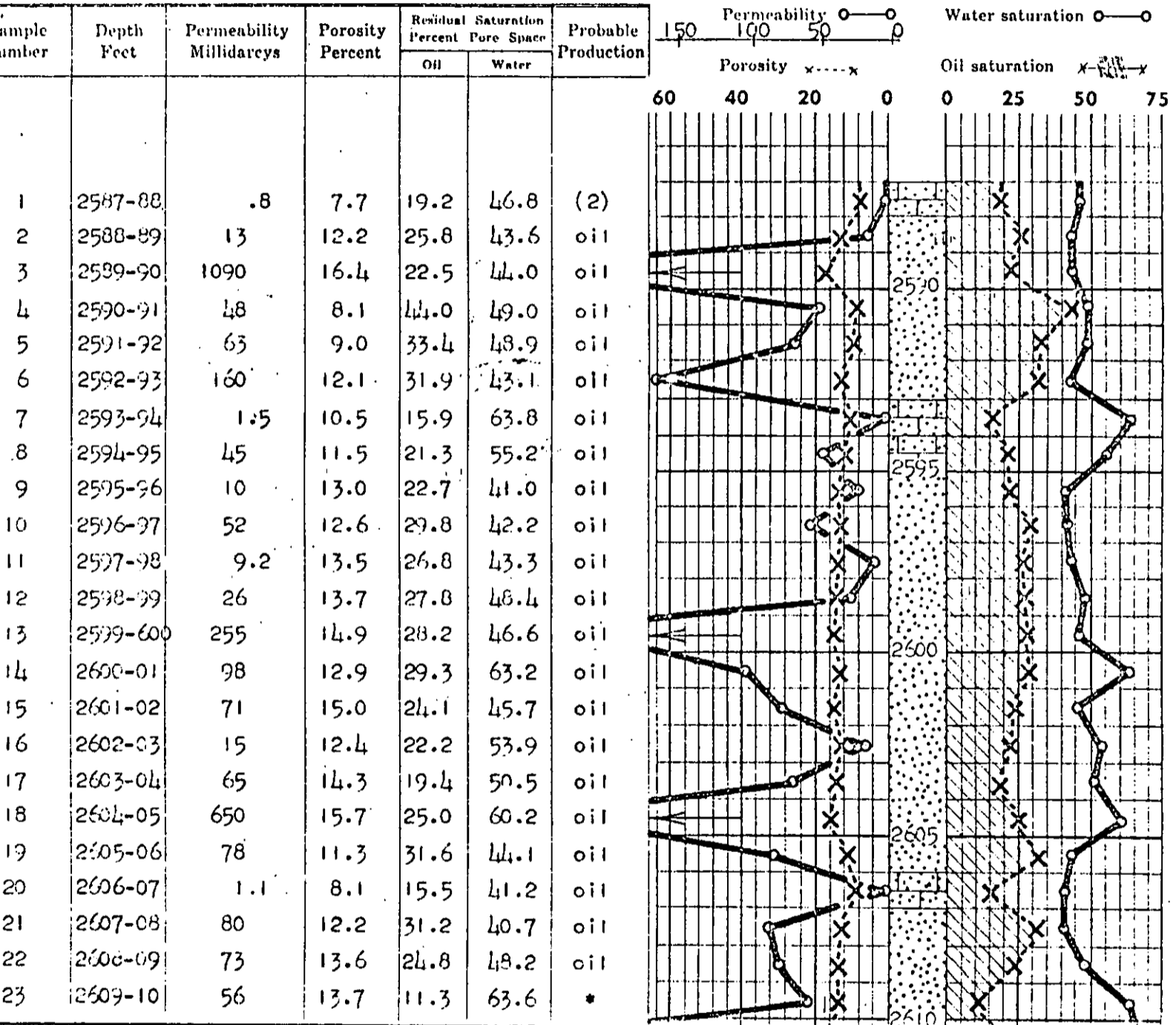
RECEIVED

MAY 01 2002

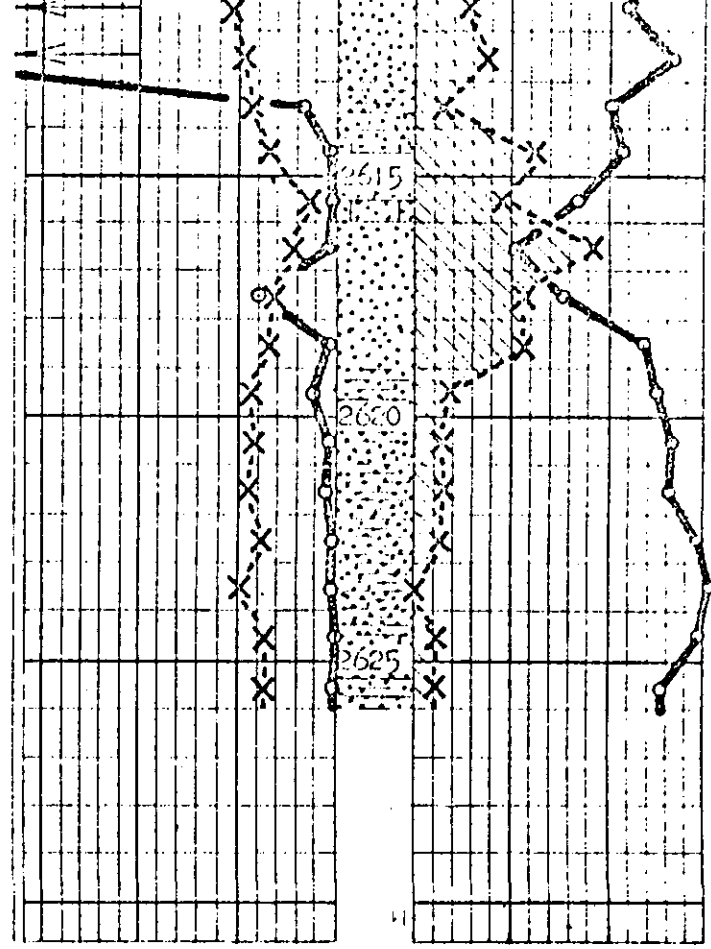
KCC WICHITA

CORE ANALYSIS REPORT

Company Magnolia Petroleum Company Location Sec. Twp. Rge. File OC-1-114
 Well M. A. Koogler No. 104 Elevation Remarks
 Field Eldorado Engineers REC:JHH
 County Butler State Kansas Type Core Barrel Rotary



25	2611-12	6.5	21.3	11.8	55.0	*
26	2612-13	34.8	18.7	18.8	66.8	*
27	2613-14	17	17.4	7.0	50.2	*
28	2614-15	2.4	14.1	31.4	53.2	oil
29	2615-16	1.4	5.3	23.0	42.5	oil
30	2616-17	4.0	8.4	46.6	25.7	oil
31	2617-18	4.0	12.2	28.5	38.7	oil
32	2618-19	4.0	13.2	28.6	58.7	oil
33	2619-20	10	17.1	9.9	62.5	water
34	2620-21	2.1	16.9	7.1	66.2	water
35	2621-22	5.7	18.1	7.3	65.8	water
36	2622-23	1.8	15.8	6.4	71.0	water
37	2623-24	1.4	19.6	0	77.0	water
38	2624-25	.8	14.5	5.6	73.5	(2)
39	2625-26	1.4	15.1	5.5	63.6	water



- (1) See Letter
- (2) Low permeability—non pay

- (3) Transition zone (a) Oil to water (b) Gas to oil (c) Gas to water
- (4) Oil—not commercially productive

SUMMARY

Formation Name	Depth	to	feet	Core Recovery	Percent
Productive formation recovered	feet		Possible productive formation		feet
Average of determined values:		Estimated or measured reservoir data used:		Predicted unit-recoverable oil in bbls. per acre foot	
Permeability	114 mdeys.	Original solution gas-oil ratio		By gas expansion to zero PSI	
Porosity	12.2 percent	Original formation volume factor	cu. ft/bbl.	By complete water drive, pressure maintained	
Water saturation	27.3 percent	Original saturation pressure	bbls./bbl.	By pattern flooding to 95% water cut	
Innate water	22.8 (3) percent	Original bottom hole pressure	PSI	(F) From electric log	
Gravity produced oil	*API	(D) From fluid behavior analysis		(G) From drilling time	
		(E) Field measurement		(H) From production data	
		Permeability Distribution Factor			
		(Perfect distribution—1.0)			

1325 K.F.
ELEVATION— 1500 S.F.

FORMATION	DEPTH	SUB-SEA	THICK	SOURCE
Viola	2569	-1244		2570-2586
Simpson	2587	-1262		2587-2628
Red Bed	2628	-1303		2628-2631
Total Depth	2631			
Plug Back Depth	2604			

OPERATOR— Magnolia
FARM— M. A. Keogler NO. 104
LOCATION— SW 1/4 NW
FOOTAGE
S. T. R. (SUR.) Sec. 20-20S-3E
CO.-PA. Butler
STATE Kansas
AREA El Dorado Field

CASING RECORD—
3 5/8" @ 102' & con. w/70 sacks
5" @ 2631' & con. w/100 sacks

DATE COMMENCED— 6/27/53

DATE COMPLETED— 7/2/53

PRODUCTION FORMATION—
Viola and Simpson

INITIAL PRODUCTION—
P 50 BO & 106 BW in 24 hrs
Conn. gravity 32.6°

REMARKS—

Top Viola 2569, -1244
* Core #1 2570-2586, full recovery.
16' cherty, finely sacrosic dolomite w/fair to good por. & sp. sat. stn oil.
* Core #2 2586-2631, full recovery,
1' finely sacrosic dolo. w/sat. stn oil
2' dolo. ss. w/sp sat. stn oil
3' med. gran. ss. w/sat. stn oil
3' dolo. ss. w/sp. sat. stn oil
20' ss. w/sp. sat. stn oil to 2630
2' quartzic w/oil stn
6' ss. w/sp. stn oil
6' silty, argill. ss. NSO
3' grn & red ch. w/abund. hematitic nodds.

Top Simpson 2587, -1262
Top Red Bed 2628, -1303

Total Depth 2631
Set 5" @ 2631' & con. w/100 sacks

7/17/53 - PB 2630, perf. 2591-2620 w/116 homo ch., bailed 130 GWH w/SSO, 3 hrs.
7/18/53 - Bail 1 GWH for 5 hrs., dumped 100 gals. mud acid.
7/19/53 - Bailed 65 GWH. PB to 2606 w/4 sacks con.
7/20/53 - Bailed 2 1/2 GWH w/80.
7/21/53 - Bailed 3 1/2 GWH w/SSO. Acidized w/500 gals.
7/22/53 - Set 15 BO & 106 BW in 12 hrs.

* No Core to exist

A. H. Blewett

RECEIVED
MAY 01 2002
KCC WICHITA

7/23/53 - Last 12-hour test at rate of Sub 30 EO & 212 BWB, run electric water locator.
Meter 2591-2595, sq. perf. 2591-2006 w/100 checks.

7/25/53 - Bld out com. to 2004. Tented dry. Perf. 2595-2103 w/32 sh., tested 4 hrs, 1 GPM

7/27/53 - Acclimated w/250 gals., HP 500% vac., sub 4 EO & 58 BW in 5 hrs.

7/27/53 - Perf. 2570-06 w/64, none sh.

8/1/53 - P 51 EO & 213 BW, cr. 33.6°

8/4/53 - P 50 EO & 168 BW, 24 hrs., 19 - 48° SPM, corr. cr. 33.6°

RECEIVED

MAY 01 2002

KCC WICHITA

GMH:mc
cc:TH
WBP
RW

License and Well No. H. A. Hoegler No. 104

Date: 1-2-55

Current Production - Characteristics

Oil Production	<u>10.4</u>	Wells/Day
Water Production	<u>154.0</u>	Wells/Day
Fueling Time	<u>24.0</u>	Wells/Day

RECEIVED
MAY 01 2002
KCC WICHITA

Inhibitor Treatment History

<u>Chemical</u>	<u>Date Started</u>	<u>How Applied</u> (Batch or Continuous)	<u>Dosage Rate</u>	
			<u>Gals/Day</u>	<u>PPM</u>
<u>Model 120</u>	<u>6-1-54</u>	<u>Batch</u>	<u>3</u>	

Corrosion Test Coupon Data - Inches Per Year

	<u>Before Treatment</u>	<u>With Present Treatment</u>
Avg. Penetration Rate	<u>0.35 INY (7-11-54)</u>	<u>0.00 INY (12-16-54)</u>
Pitting Rate	<u>N.A.</u>	<u>N.A.</u>

Cost Data - Dollars

	<u>Before Treatment</u>	<u>After Treatment</u>
Labor & Pulling Machine Expense	<u>657.10</u>	<u>250.10</u>
Rods	<u>1072.20</u>	
Coupling		
Tubing		
Pump	<u>200.00</u>	<u>170.00</u>
Miscellaneous		<u>232.00</u>
Inhibitor		
Totals	<u>2000.10</u>	<u>600.20</u>

Time Interval: From 6-1-53 To 6-1-54 From 6-1-54 To 1-2-55

Cost Per Year	<u>2000.10</u>	<u>1196.27</u>
Jobs Per Year	<u>12</u>	<u>9</u>
Days Off Per Year for Repairs	<u>2.4</u>	<u>1.7</u>

Estimated Profit or Loss from Inhibitor Treatment, \$/Yr. 003.03

REMARKS: * New string of rods 006
Well Drilled and Equipped 7-27-53

KCC WICHITA
MAY 01 2002
RECEIVED

RECEIVED
MAY 01 2002
KCC WICHITA

RECEIVED
MAY 01 2002
KCC WICHITA