

STATE OF KANSAS
STATE CORPORATION COMMISSION
200 Colorado Derby Bldg.
Wichita, Kansas 67202

WELL PLUGGING RECORD

Give All Information Completely
Make Required Affidavit

COUNTY Barber SEC. 34 TWP. 32 S RGE. 11 W E/W
Location as in quarters or footage from lines:
SW/4 SW/4 SW/4

Lease Owner Midwestern Resources, Inc.
Lease Name Williams Well No. #1
Office Address 6400 Classen Blvd. - Oklahoma City, Oklahoma 73116
Character of Well (Completed as Oil, Gas or Dry Hole): Gas
Date Well Completed 6-24-82
Application for plugging filed 3-20-82
Plugging commenced 6-11-82
Plugging completed 6-17-82
Reason for abandonment of well or producing formation Dry

Locate Well
correctly on above
Section Platt.

Was permission obtained from the Conservation Division or it's
Agent's before plugging was commenced? Yes

Name of Conservation Agent who supervised plugging of this well Paul Luthi
Producing formation _____ Depth to top _____ bottom _____ T.D. 4,624

Show depth and thickness of all water, oil and gas formations.

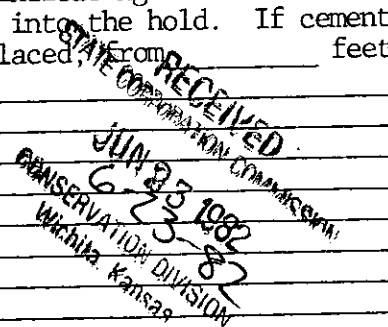
OIL, GAS OR WATER RECORDS

Casing Record

Formation	Content	From	To	Size	Put in	Pulled Out
				8 5/8"	275	None
				4 1/2"	4600	3550

Describe in detail the manner in which the well was plugged, indicating where the mud
fluid was placed and the method or methods used in introducing it into the hold. If cement
or other plugs were used, state the character of same and depth placed, from _____ feet
to _____ feet for each plug set.

Plugged back at 4410
Sand from 4410 to 4350
4 sacks cement from 4350 to 4320
Ripped at 3550
Pumped in 15 jel - 6 hull - 1- jel
150 sacks Cl. H - 3% C. C.



(If additional description is necessary, use BACK of this sheet)

Name of Plugging Contractor Clarke Corporation

STATE OF Kansas COUNTY OF Barber, ss.
Alfred K. Margenlander (employee of owner) or (owner or operator) of the
above-described well, being first duly sworn on oath, says: That I have knowledge of the
facts, statements, and matters herein contained and the log of the above-described well as
filed and that the same are true and correct. So help me God.

(Signature) Alfred K. Margenlander
(Address) Medicine Lodge, Mo.

SUBSCRIBED AND SWORN TO before me this 21st day of June, 1982

Jessie Hamilton
Notary Public.

My Commission expires: April 4, 1986.

COUNTY BARBER
FIELD NORTH RHODES
LOCATION SEC. 34-32S-11N
WELL WILLIAMS NO. 1
MIDWESTERN
COMPANY RESOURCES, INC.

COMPANY MIDWESTERN RESOURCES, INC.
15-057-2186-0000
WELL WILLIAMS NO. 1
FIELD NORTH RHODES
COUNTY BARBER STATE KANSAS
LOCATION SW/4-SW/4-SW/4
API SERIAL NO. SEC. 34 TWP. 32S RANGE 11W
Other Services: CNL/FDC-CR

Permanent Datum: GROUND LEVEL, Elev.: 1491
Log Measured From K. B. 8 Ft. Above Perm. Datum
Drilling Measured From K. B.

Date	6-24-81	State	KANSAS
Run No.	0NF	Company	STATE CORPORATION
Depth-Driller	4600		
Depth-Logger	4624		
Lim. Log Interval	4618		
Op Log Interval	3050		
Casing-Driller	8 5/8 @ 275		
Casing-Logger	275		
Bit Size	7 7/8		
Type Fluid in Hole	CHEMICAL		
Dens.	9.4	Visc.	52
pH	10.4	Fluid Loss	14.2 ml
Source of Sample	M		
Rm @ Meas. Temp.	.248 @ 94 °F		
Rmf @ Meas. Temp.	.183 @ 87 °F		
Rmc @ Meas. Temp.	@ @ °F		
Source: Rmf	M		
Rm @ BHT	210 @ 111 °F		
Circulation Stopped	1230		
Logger on Bottom	1530		
Max. Rec. Temp.	111 °F		
Equip. Location	7747 MICHEITA		
Recorded By	BAUER, SMITH		
Witnessed By			

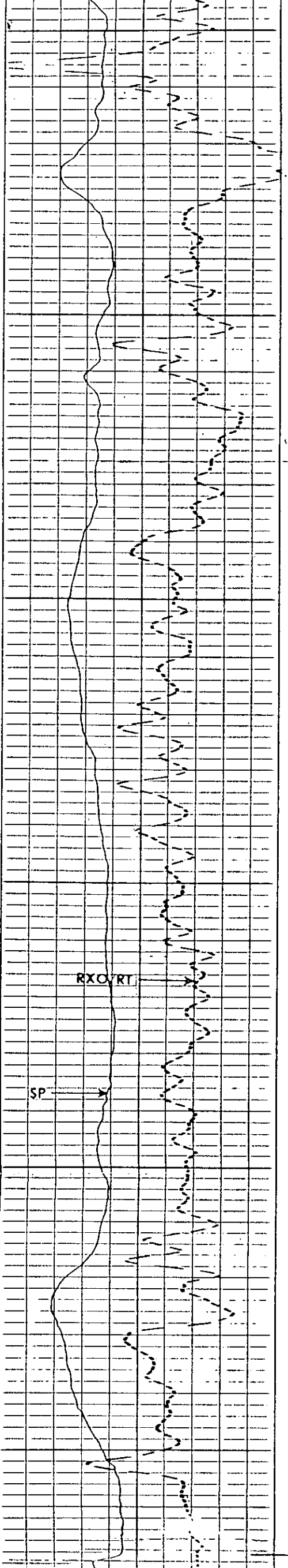
RECEIVED
STATE CORPORATION
MAR 25 1982
CONSERVATION DIVISION
Wichita, Kansas

...OLD HERE... The well name, location and borehole reference data were furnished by the customer.

Run No.	ONE	SCALE CHANGES			
Service Order No.	218630	Type Log	Depth	Scale Up Hole	Scale D
Fluid Level	SURF				
Salinity ppm. cl	15,000				
Speed F.P.M.	100				
EQUIPMENT DATA					
Panel No.	436				
Chart No.	537				
Sound No.	654				
Temp. Panel No.	590				
Temp. Panel No.					
Temp. Cart No.					
Depth Recorder - (TTR)	1897				
Depth Encoder - (DRE)	2030				
Pressure Wheel - (CPW)	2828				
Type Centralizers	FIN				
Stand Off - Inches	1.5"				
CALIBRATION DATA					
DR	1.0				
Sound Error - ILM	7.6				
Sound Error - ILD	9.7				
Temp. BKG. - CPS.					
Temp. Source - CPS.					
Temp. Set In Hole - Depth					
Temp. Corr. - Hole Size					
LOGGING DATA					
DR	1.0				
Temp. Log - ILM	7.0				
Temp. Log - ILD	9.7				
Temp. Scale per 100 Div.					
Temp. - T.C.					
Temp. Sens.					

All interpretations are opinions based on inferences from electrical or other measurements and we cannot, and do not guarantee the accuracy or correctness of any interpretations, and we shall not, except in the case of gross or willful negligence on our part, be liable or responsible for any loss, costs, damages or expenses incurred sustained by anyone resulting from any interpretation made by any of our officers, agents or employees. These interpretations are also subject to our General Terms & Conditions as set out in our current Price Schedule.

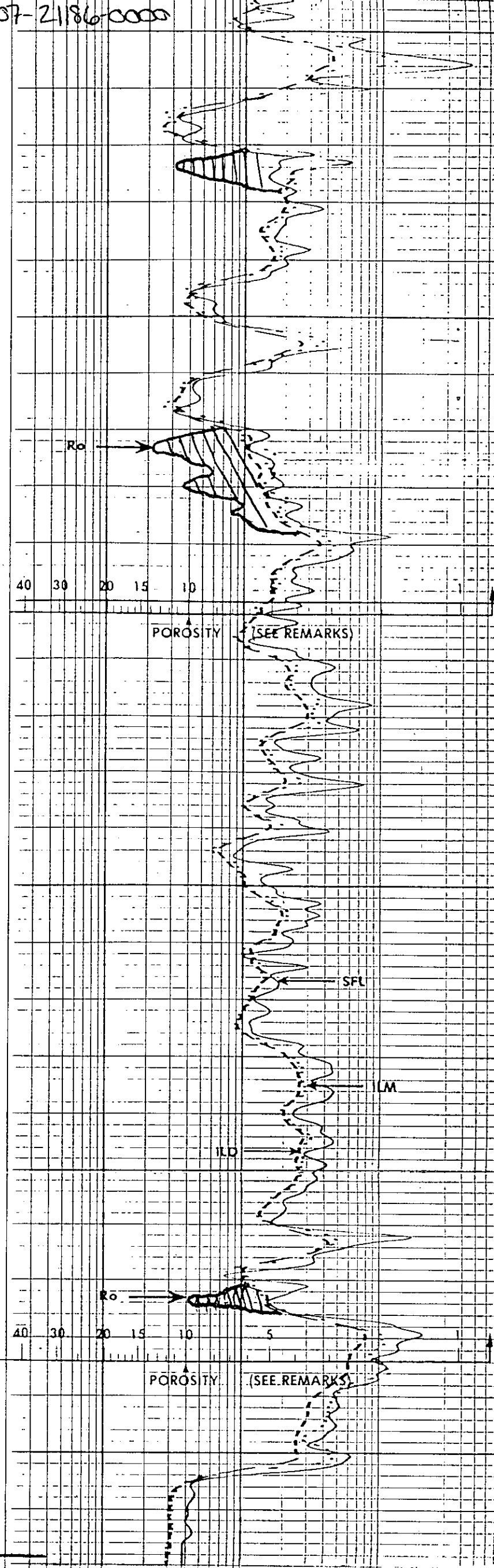
<p>SPONTANEOUS-POTENTIAL</p> <p style="text-align: center;">MILLIVOLTS</p> <p style="text-align: center;">10 + - 1</p>	<p>CONDUCTIVITY</p> <p style="text-align: right;">MILLIMHOS/M = $\frac{1000}{\text{OHMS M}^2/\text{M}}$</p> <p style="text-align: center;">DEEP INDUCTION</p> <p style="text-align: center;">1000 500</p>
---	--



4400

4500

4600



40 30 20 15 10

POROSITY (SEE REMARKS)

SFL

ILM

ILD

40 30 20 15 10 5

POROSITY (SEE REMARKS)