

15-007-19053-0000  
 NOTICE OF INTENTION TO DRILL

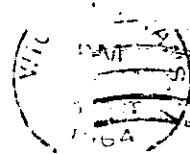
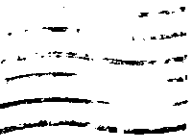
TO BE FILED WITH THE STATE CORPORATION COMMISSION PRIOR TO COMMENCEMENT OF WELL

1. Operator Petroleum Management, Inc. Address 515 Wichita Plaza, Wichita, Kansas
2. Lease name Mills "F" Well No. 1 County Barber
3. Well Location SE NW Sec. 31 Township 30S Range 14W
4. Well to be drilled 660 ft. from nearest lease line.
5. Drilling Contractor Leben Drilling, Inc. Address 905 Central Building, Wichita, Kansas
6. Type of equipment: Rotary  Cable Tool  Approx. date operation to begin October 15 1964
7. Well to be drilled for Oil  Gas  Disposal  Input  Estimated Total Depth of Well 3900 ft.
8. Depth of deepest fresh water well within one mile of location none ft. If none exists, write NONE
9. Ground elevation at location is approx. 1750 ft. higher or \_\_\_\_\_ ft. lower than ground elevation at water well.
10. Depth of the deepest municipal water well within three miles of location None ft. If none exists, write NONE
11. Operator states that he will set surface pipe at least 25 ft. below all Tertiary or unconsolidated deposits and, taking into consideration differences in ground elevations, that the minimum depth necessary, to the best of his knowledge and belief, to protect all fresh water zones is 175 ft. and operator agrees to set surface pipe at this location to a depth of not less than 200 ft. Alternate 1  Alternate 2

REMARKS:

Signature of Operator



**State Corporation Commission of Kansas  
Conservation Division  
500 Insurance Building  
212 North Market  
Wichita 2, Kansas**

**RECEIVED**  
STATE CORPORATION COMMISSION

OCT 6 1964  
10-6-64  
CONSERVATION DIVISION  
Wichita, Kansas

**(IF PREFERRED, MAIL IN ENVELOPE)**