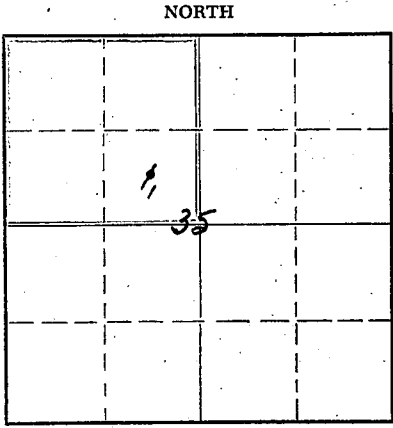


WELL PLUGGING RECORD

Give All Information Completely
Make Required Affidavit
Mail or Deliver Report to:
Conservation Division
State Corporation Commission
800 Bitting Building
Wichita, Kansas

Barber County, Sec. 35 Twp. 32S Rge. (E) 13 (W)
Location as "NE/CNW/SW" or footage from lines C SE/4 NW/4
Lease Owner Skelly Oil Company
Lease Name Mattie Binning Well No. 1
Office Address Box 1650, Tulsa, Oklahoma
Character of Well (completed as Oil, Gas or Dry Hole) Dry Hole
Date well completed August 5, 19 54
Application for plugging filed August 5, 19 54
Application for plugging approved August 9, 19 54
Plugging commenced August 6, 19 54
Plugging completed August 6, 19 54
Reason for abandonment of well or producing formation Dry Hole



Locate well correctly on above Section Plat

If a producing well is abandoned, date of last production 19
Was permission obtained from the Conservation Division or its agents before plugging was commenced? Yes (verbally)

Name of Conservation Agent who supervised plugging of this well Mr. M. A. Rives
Producing formation _____ Depth to top _____ Bottom _____ Total Depth of Well 3986' Feet
Show depth and thickness of all water, oil and gas formations.

OIL, GAS OR WATER RECORDS

CASING RECORD

FORMATION	CONTENT	FROM	TO	OD SIZE	PUT IN	PULLED OUT
Lansing	Dry	3903'		8-5/8"	466' 0"	None

Describe in detail the manner in which the well was plugged, indicating where the mud fluid was placed and the method or methods used in introducing it into the hole. If cement or other plugs were used, state the character of same and depth placed, from _____ feet to _____ feet for each plug set.

Heavy mud 3986' to 340'
20 sacks of cement 340' to 275'
Mud 275' to 30'
Wood plug 30'
10 sacks of cement 30' to 6'
Surface soil 6' to 0'

RECEIVED
STATE CORPORATION COMMISSION
AUG 25 1954
CONSERVATION DIVISION
Wichita, Kansas

(If additional description is necessary, use BACK of this sheet)
Name of Plugging Contractor Chas. Hulme, Drilling Contr.
Address Great Bend, Kansas

STATE OF Kansas, COUNTY OF Reno, ss.
H. E. Wamsley (employee of owner) of the above-described well, being first duly sworn on oath, says: That I have knowledge of the facts, statements, and matters herein contained and the log of the above-described well as filed and that the same are true and correct. So help me God.

(Signature) _____
Box 391, Hutchinson, Kansas
(Address)

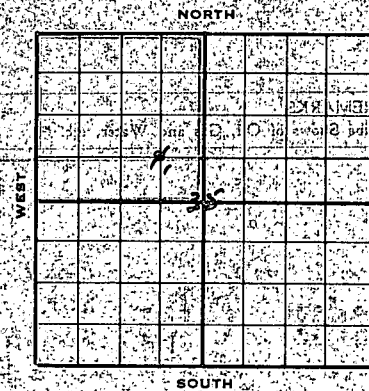
SUBSCRIBED AND SWORN TO before me this 24th day of August, 19 54

My commission expires April 7, 1954

Josephine L. Johnson
Notary Public.

24-7368-S 3-53-20M
PLUGGING
FILE SEC 35 T 32 R 13 W
BOOK PAGE 34 LINE 31

SKELLY OIL COMPANY



Well Record

Lease Name and No. Mattie Dinning 44756 Well No. 1 Elev. 16
 Lease Description 3/4 Sec. 26; 1/4 Sec. 25, and 5/4
Sec. 24-26-13, Barber County, Kans. (360 Acre
 Location made July 22, 1952 by Barber County Engi
560 feet from North line 560 feet from East line 560/4
560 feet from South line 560 feet from West line of Sec.

Work com'd 7/23 1952 Rig com'd 7/24 1952 Drig. com'd 7/24 1952 Drig. com'd 8/5
 Rig Contractor Chas. Hulme, Drilling Contr.
 Drilling Contractor Chas. Hulme, Drilling Contr., Great Bend, Kansas
 Rotary Drilling from 0' to 3903' Cable Tool Drilling from to
 Commenced Producing DRY HOLE 19 (Initial Prod. before shot or acid
 (Initial Prod. after shot or acid
 Dry Gas Well Press. Volume
 Casing Head Gas Pressure Volume
 Braden Head (Size) Gas Pressure Volume
 Braden Head (Size) Gas Pressure Volume

PRODUCING FORMATION DRY HOLE (Name) Top Bottom TOTAL DEPTH 3903'

CASING RECORD

OD	Size	Wt.	Thds.	Where Set	PULLED OUT			LEFT IN			KIND	Condn.	Sacks Used	CEMENTING Method Employ
					Jts.	Feet	In.	Jts.	Feet	In.				
	8-5/8"	22.7	23	473'				12	466	0	ARCO	4	275	Halliburton
	10-5/8"			CEMENT SET 2' IN COLL.										

Liner Set at Length Perforated at
 Liner Set at Length Perforated at
 Packer Set at Size and Kind
 Packer Set at Size and Kind

SHOT OR ACID TREATMENT RECORD

Date	Acid Used Size Shot	FIRST		SECOND		THIRD		FOURTH	
		Gals. Qts.	Ft. and Ft.	Gals. Qts.	Ft. and Ft.	Gals. Qts.	Ft. and Ft.	Gals. Qts.	Ft. and Ft.

SIGNIFICANT GEOLOGICAL FORMATIONS

NAME	Top	Bottom	GAS		OIL		REMARKS
			From	To	From	To	
Hoobner Shale	475'						
1st Douglas Sl.	475'						
2nd Douglas Sl.	1245'						
Lansing Lime	3903'						

CLEANING OUT RECORDS

	DATE COMMENCED	DATE COMPLETED	PROD. BEFORE	PROD. AFTER	REMARKS
1st					See Reverse for ot
2nd					
3rd					
4th					

PLUGGING BACK AND DEEPENING RECORDS

	Date Commenced	Date Completed	No. Feet Plugged Back or Deepened	Prod. Before	Prod. After	REMARKS

RECORD OF FORMATIONS

FORMATION	TOP	BOTTOM	REMARKS
Rock, sand, and gravel	0	65	
Shale and shells	65	325	
Sand and shells	325	475	Set and cemented 6-5/8" pipe, 22.7' in cond. at 475' with 275 sacks of cement, 5 sacks of calcium chloride.
Shale	475	1520	Cement circulated
Anhydrite	1520	1542	
Sand and lime	1542	1770	
Lime	1770	2275	
Lime and shale	2275	2600	
Shale	2600	3010	
Lime	3010	3475	
Sand and shale	3475	3570	
Shale	3570	3645	
Shale	3645	3715	
Sand and shale	3715	3765	
Fine to medium grained light gray sub-angular micaceous sand	3765	3790	

FORMATION	TOP	BOTTOM	REMARKS
Light gray, fine to medium grained micaceous limey sand	3790	3870	Very tight, no permeability or stain. Anchor set at 3780', used 275 sacks of cement, 5 sacks of calcium chloride. Initial flow 0.00, final 17.00.
Sand, shale, and lime	3870	3995	
Light gray to tan, fine crystalline lime	3995	4090	No permeability, no stain, no flow.
Lime	4090	4100	

FORMATION	TOP	BOTTOM	REMARKS
Heavy mud	4100	4140	
20 sacks of cement	4140	4175	
Mud	4175	4200	
Mud plug	4200	4200	
10 sacks of cement	4200	4230	
Surface seal	4230	4230	

REMARKS	DEPTH	TEMPERATURE	REMARKS
	750'	0 degrees	
	1000'	0	
	1250'	1/2	
	1500'	1/2	
	2000'	1/2	
	2600'	1/2	
	3000'	0	
	3475'	1/2	

REMARKS	DATE COMPLETED	DATE COMMENCED	REMARKS

PLUGGING
25 1-32-34