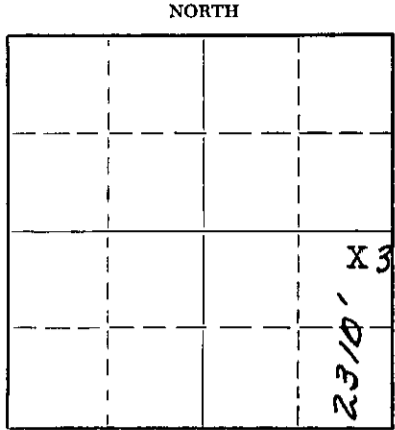


STATE OF KANSAS  
STATE CORPORATION COMMISSION

WELL PLUGGING RECORD

Give All Information Completely  
Make Required Affidavit  
Mail or Deliver Report to:  
Conservation Division  
State Corporation Commission  
800 Bitting Building  
Wichita, Kansas

Barber County. Sec. 17 Twp. 31S Rge. 14 ~~(EX)~~ (W)  
Location as "NE/CNW/SW" or footage from lines Gen NE NE SW  
Lease Owner J.M. Huber Corp.  
Lease Name Skinner "H" Well No. 3  
Office Address Box 978 Liberal, Kansas  
Character of Well (completed as Oil, Gas or Dry Hole) Oil  
Date well completed 3-16-49 19  
Application for plugging filed 4-10-53 19  
Application for plugging approved 4-13-53 19  
Plugging commenced 5-20-53 19  
Plugging completed 5-23-53 19  
Reason for abandonment of well or producing formation Formation Dry  
If a producing well is abandoned, date of last production \_\_\_\_\_ 19  
Was permission obtained from the Conservation Division or its agents before plugging was commenced? Yes



Locate well correctly on above Section Plat

Name of Conservation Agent who supervised plugging of this well Mr. M.A. Rives  
Producing formation Viola Depth to top 4380' Bottom 4392' Total Depth of Well 4392' Feet  
Show depth and thickness of all water, oil and gas formations.

OIL, GAS OR WATER RECORDS

CASING RECORD

FORMATION	CONTENT	FROM	TO	SIZE	PUT IN	PULLED OUT
Viola	Oil	4380'	4392'	8 5/8"	840'	None
				5 1/2"	4380'	3329'

Describe in detail the manner in which the well was plugged, indicating where the mud fluid was placed and the method or methods used in introducing it into the hole. If cement or other plugs were used, state the character of same and depth placed, from \_\_\_\_\_ feet to \_\_\_\_\_ feet for each plug set.

Filled hole with rock from 4392' to 4340'. Dumped 5 sacks of cement at 4340'. Shot and recovered 3329' of 5 1/2" casing. Set fresh water plug at 300' with 20 sacks of cement, after filling hole with mud laden fluid from 4340' to 300'. Filled with mud laden fluid to 35'. Filled to surface with 10 sacks of cement.

(If additional description is necessary, use BACK of this sheet)

Name of Plugging Contractor Carroll Bros. Casing Pulling Co.  
Address Ellinwood, Kansas

STATE OF Kansas, COUNTY OF Pratt, ss.  
R.E. McDaniel (employee of owner) or ~~(owner)~~ of the above-described well, being first duly sworn on oath, says: That I have knowledge of the facts, statements, and matters herein contained and the log of the above-described well as filed and that the same are true and correct. So help me God.

(Signature) RE McDaniel

Box 978 Liberal, Kansas  
(Address)

SUBSCRIBED AND SWORN TO before me this 28 day of May, 19 53

My commission expires Sep 10, 1955

J. L. Keeler  
Notary Public.  
STATE CORPORATION COMMISSION

24-2675-S 2-52-20M

**PLUGGING**  
FILE SEC 17 T 31 R 14  
BOOK PAGE 92 LINE 8

JUN 24 1953  
6-4-53  
CONSERVATION DIVISION  
Wichita, Kansas

DRILLER'S LOG

COMPANY: J. M. HUBER CORPORATION  
 CONTRACTOR: J. M. HUBER CORPORATION

LOCATION: NE NE SW, 17-318-14W  
 Barber County, Kansas

FARM NAME: SKINNER "H" #3

ELEVATION: 1661'

COMMENCED: 12-6-48  
 COMPLETED: 3-16-49

PRODUCTION: 88 barrels oil plus 20% water.

CASING USED: 8" at 840' with 425 sacks  
 5" at 4380' with 200 sacks

Red bed & shalls	1275
Salt, shale & shalls	1565
Shale & shalls	1725
Lime & shale	1935
Lime	1995
Lime & shale	2095
Shale & lime	2175
Lime	2225
Lime & shale	2500
Lime & shale streaks	2595
Shale	2685
Lime & shale	3045
Lime & shale streaks	3145
Lime & shale	3460
Shale	3495
Lime	3530
Broken lime & shale	3615
Lime & shale	3695
Lime (shaley)	3775
Shale & lime	3799
Sand	3810
Shale & lime	3893
Lime & shale breaks	3939
Lime broken, shale streaks	4009
Lime	4315
Shale & lime shells	4345
Shale	4375
Lime	4392
Total depth	4392

SAMPLE TOPS:

Viola 4367 Rotary total depth 4392'. Cleaned out to rotary total depth and washed with 200 gallons acid. Swabbed 1 barrel oil per hour. Acidized with 1000 gallons acid 4381-92'. Flowed 33.88 barrels fluid/2 hours, through 2" tubing. 18% water; through 1" choke flowed 107 barrels fluid/8 hours, 25% water. Tested. Pumped 11 barrels fluid in 22 1/2 hours, 20% water.

POTENTIAL: 88 barrels oil, 20% water.

STATE OF KANSAS)  
 ) SS  
 COUNTY OF SEDGWICK)

I, Edward A. Huffman, hereby certify that the above is a true and correct copy of the log on the #3 Skinner "H", located in the Northeast Quarter of the Northeast Quarter of the Southwest Quarter (NE NE SW) of Section Seventeen (17), Township Thirty-one (31) South, Range Fourteen (14) West of Barber County, Kansas.

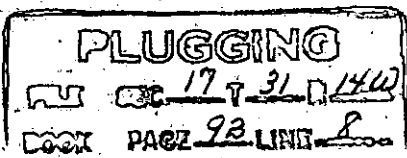
*Edward A. Huffman*  
 Edward A. Huffman, District Manager  
 J. M. HUBER CORPORATION

Subscribed and sworn to before me this 21 day of October 1949

Dorothy Revas

My Commission Expires: January 26, 1953

NOTARY PUBLIC  
 My Commission Expires January 26, 1953



RECEIVED  
 OBSERVATION DIVISION  
 Wichita, Kan. Mo.