

FOR KCC USE:

FORM C-1 7/91

EFFECTIVE DATE: 10-9-93

State of Kansas

FORM MUST BE TYPED

DISTRICT # 2

NOTICE OF INTENTION TO DRILL

FORM MUST BE SIGNED

SEAT Yes No

Must be approved by the K.C.C. five (5) days prior to commencing well

ALL BLANKS MUST BE FILLED

Expected Spud Date October 19 93 month day year

Spot NW NW NE Sec 18 Twp 33S S. Rg 12W East West

OPERATOR: License # 8061 Oil Producers, Inc. of Kansas P.O. Box 8647 Wichita, Ks. 67208 Contact Person: John S. Weir Phone: 316.681-0231

495 4950 2310 feet from South / North line of Section 2310 feet from East / West line of Section

IS SECTION X REGULAR IRREGULAR? (NOTE: Locate well on the Section Plat on Reverse Side)

CONTRACTOR: License # 5929 Duke Drilling Co., Inc.

County: Barber

Lease Name: Bartholow Well #: 2

Field Name:

Is this a Prorated/Spaced Field? yes X no

Target Formation(s): Mississippi, Douglas

Nearest lease or unit boundary: 330

Ground Surface Elevation: feet MSL

Water well within one-quarter mile: yes X no

Public water supply well within one mile: yes X no

Depth to bottom of fresh water: 75

Depth to bottom of usable water: 180

Surface Pipe by Alternate: 1

Length of Surface Pipe Planned to be set: (475) 200

Length of Conductor pipe required:

Projected Total Depth: 4600

Formation at Total Depth: Mississippi

Water Source for Drilling Operations: well farm pond X other

DWR Permit #:

Will Cores Be Taken? yes no

If yes, proposed zone:

Well Drilled For: Well Class: Type Equipment:

Oil Enh Rec X Infield X Mud Rotary Gas Storage Pool Ext. Air Rotary OWD Disposal Wildcat Cable Seismic # of Holes Other

If OWD: old well information as follows:

Operator: Well Name: Comp. Date: Old Total Depth

Directional, Deviated or Horizontal wellbore? yes X no

If yes, true vertical depth:

Bottom Hole Location:

AFFIDAVIT

The undersigned hereby affirms that the drilling, completion and eventual plugging of this well will comply with K.S.A. 55-101, et. seq.

It is agreed that the following minimum requirements will be met:

- 1. Notify the appropriate district office prior to spudding of well;
2. A copy of the approved notice of intent to drill shall be posted on each drilling rig;
3. The minimum amount of surface pipe as specified below shall be set by circulating cement to the top; in all cases surface pipe shall be set through all unconsolidated materials plus a minimum of 20 feet into the underlying formation;
4. If the well is dry hole, an agreement between the operator and the district office on plug length and placement is necessary prior to plugging;
5. The appropriate district office will be notified before well is either plugged or production casing is cemented in;
6. IF AN ALTERNATE II COMPLETION, PRODUCTION PIPE SHALL BE CEMENTED FROM BELOW ANY USABLE WATER TO SURFACE WITHIN 120 DAY: OF SPUD DATE. IN ALL CASES, NOTIFY DISTRICT OFFICE PRIOR TO ANY CEMENTING.

I hereby certify that the statements made herein are true and to the best of my knowledge and belief.

Date: 9/30/93 Signature of Operator or Agent: John S. Weir Title: President

FOR KCC USE: API # 15- 009-22426-00-00 Conductor pipe required None feet Minimum surface pipe required 200 feet per Alt. (X) Approved by: CB 10-4-93 This authorization expires: 4-4-94 (This authorization void if drilling not started within 6 months of effective date.) Spud date: Agent:

REMEMBER TO:

- File Drill Pit Application (form CDP-1) with Intent to Drill;
- File Completion Form ACO-1 within 120 days of spud date;
- File acreage attribution plat according to field prorotation orders;
- Notify appropriate district office 48 hours prior to workover or re-entry;
- Submit plugging report (CP-4) after plugging is completed;
- Obtain written approval before disposing or injecting salt water.

Mail to: Conservation Division, 200 Colorado Derby Building, 202 W. First St., Wichita, Kansas 67202-1286.

RECEIVED STATE CORPORATION COMMISSION OCT 04 1993 CONSERVATION DIVISION Wichita, Kansas

IN ALL CASES PLOT THE INTENDED WELL ON THE PLAT BELOW
PLAT OF ACREAGE ATTRIBUTABLE TO A WELL IN A PRORATED OR SPACED FIELD

If the intended well is in a prorated or spaced field, please fully complete this side of the form. If the intended well is in a prorated or spaced field complete the plat below showing that the well will be properly located in relationship to other wells producing from the common source of supply. Please show all the wells within 1 mile of the boundaries of the proposed acreage attribution unit for gas wells and within 1/2 mile of the boundaries of the proposed acreage attribution unit for oil wells.

API NO. 15- _____
 OPERATOR Oil Producers, Inc. of Kansas
 LEASE Bartholow #2
 WELL NUMBER _____
 FIELD _____

LOCATION OF WELL: COUNTY Barber
4950 feet from south/north line of section
2310 feet from east/west line of section
 SECTION 18 TWP 33S RG 12W

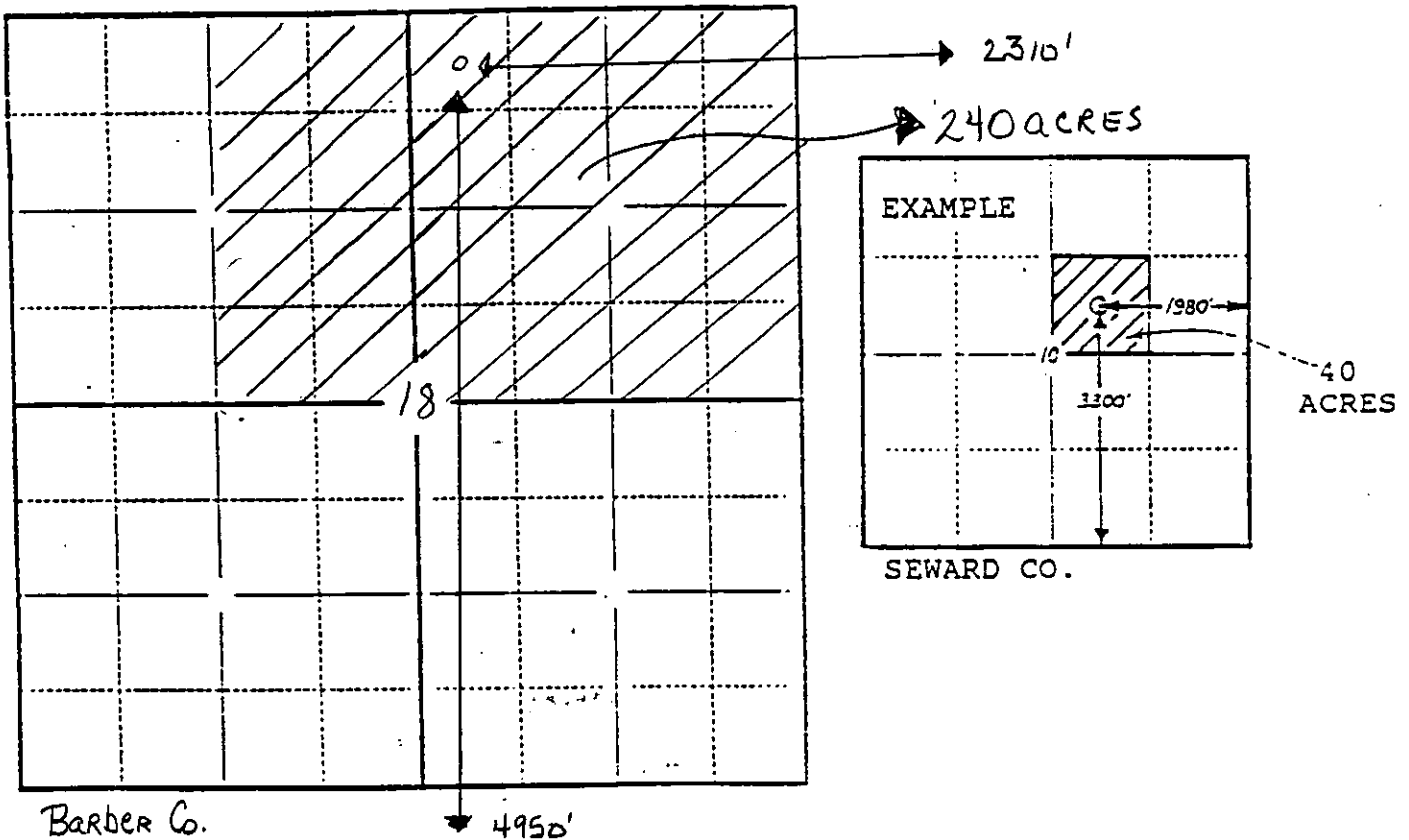
NUMBER OF ACRES ATTRIBUTABLE TO WELL 40
 QTR/QTR/QTR OF ACREAGE _____

IS SECTION X REGULAR or _____ IRREGULAR
IF SECTION IS IRREGULAR, LOCATE WELL FROM NEAREST CORNER BOUNDARY.

Section corner used: _____ NE _____ NW _____ SE _____ SW

PLAT

(Show location of the well and shade attributable acreage for prorated or spaced wells.)
 (Show footage to the nearest lease or unit boundary line.)



In plotting the proposed location of the well, you must show:

- 1) The manner in which you are using the depicted plat by identifying section lines, i.e. 1 section, 1 section with 8 surrounding sections, 4 sections, etc.;
- 2) the distance of the proposed drilling location from the section's south/north and east/west lines; and
- 3) the distance to the nearest lease or unit boundary line.