

TYPE

NOTICE OF INTENTION TO DRILL

C-1

TO BE FILED WITH THE STATE CORPORATION COMMISSION
PRIOR TO COMMENCEMENT OF WELL

API Number 15-007-20482
(For office use only) - 00-00

1. Operator Clarke Corporation

Starting Date 15 March 1977

County Barber

Address 107 West Fowler, Medicine Lodge, Ks. 67104

Sec 28 Twp 32 S Rge 12 ^{SE} _W

2. Contractor Graves Drilling Co., Inc.

Spot Location NW SW SW

Address 910 Union Center, Wichita, Ks. 67202

Nearest Lease Line 330 ft.

3. Type of Equipment: Rotary Cable Tool _____

Lease Name Tedrow

4. Well to be Drilled for: Oil Gas _____

Well No. 4

Disposal _____ Input _____ Other _____

5. Depth of Deepest Fresh Water within 1 mile 23 ft.

Est. Total Depth 4500 ft.

6. Depth of Municipal Water Well within 3 miles none ft.

7. Depth to Protect all Fresh Water 200 80 ft.

8. Amount of Surface Casing to be set 200 ft.

9. Alternate No. 1 No. 2 _____

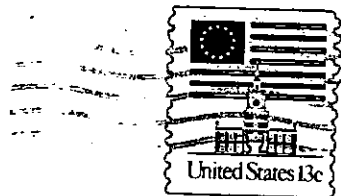
REMARKS:

OPERATOR STATES THAT HE WILL COMPLY WITH K. S. A. 55-128

Signature of Operator

Clarke Corporation
Lloyd S. Clarke





State Corporation Commission of Kansas

Conservation Division

~~Wichita, Kansas~~

Wichita, Kansas ~~67202~~

New Address
245 North Water
Wichita, Kansas 67202

2-28-77

(IF PREFERRED, MAIL IN ENVELOPE)