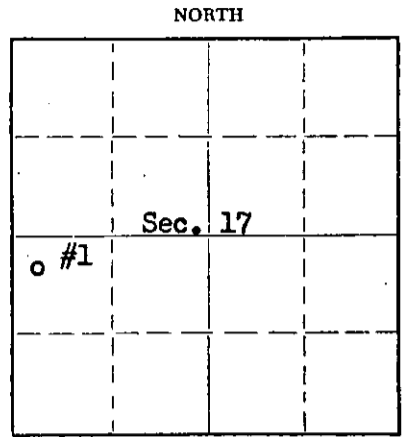


STATE OF KANSAS
STATE CORPORATION COMMISSION

Give All Information Completely
Make Required Affidavit
Mail or Deliver Report to:
Conservation Division
State Corporation Commission
212 North Market, Insurance Bldg.
Wichita, Kansas

WELL PLUGGING RECORD



Barber County, Sec. 17 Twp. 32S Rge. 12 (W)
Location as "NE/CNW/SW" or footage from lines 330 FWL & 990 FSL of N/2 SW/4
Lease Owner Socony Mobil Oil Company, Inc.
Lease Name C. J. Forsyth Well No. 1
Office Address 300 North Broadway, Wichita 2, Kansas
Character of Well (completed as Oil, Gas or Dry Hole) Oil
Date well completed February 25 19 56
Application for plugging filed July 28 19 61
Application for plugging approved August 1 19 61
Plugging commenced August 21 19 61
Plugging completed August 26 19 61
Reason for abandonment of well or producing formation Not economical to produce.

If a producing well is abandoned, date of last production August 21 19 61.
Was permission obtained from the Conservation Division or its agents before plugging was commenced? Yes

Name of Conservation Agent who supervised plugging of this well Mr. Fred Hampel
Producing formation Mississippian Depth to top 4442' Bottom 4454' Total Depth of Well 4462' PB Feet
Show depth and thickness of all water, oil and gas formations.

OIL, GAS OR WATER RECORDS			CASING RECORD			
FORMATION	CONTENT	Top	TO	SIZE	PUT IN	PULLED OUT
Douglas		3773'		9-5/8"	344'	None
Lansing-Kansas City		3881'		5-1/2"	4499'	3626'
Mississippi		4418'				

Describe in detail the manner in which the well was plugged, indicating where the mud fluid was placed and the method or methods used in introducing it into the hole. If cement or other plugs were used, state the character of same and depth placed, from _____ feet to _____ feet for each plug set.

Plugged back with sand from PBTD 4462' to 4420' with 40 gallons sand.
Plugged back with cement from 4420' to 4388'. Mudded hole from 4388' to 300'.
Set 5' rock from 300' to 295'. Plugged back with cement from 295' to 245'.
Mudded hole from 245' to 30'. Set 5' rock bridge from 30' to 25'.
Plugged back with cement from 25' to base of collar.

RECEIVED
STATE CORPORATION COMMISSION
SEP 21 1961 9:21 AM
CONSERVATION DIVISION
Wichita, Kansas

(If additional description is necessary, use BACK of this sheet)
Name of Plugging Contractor Ace Pipe Pulling Company
Address Box 304, Great Bend, Kansas

STATE OF KANSAS, COUNTY OF SEDGWICK, ss.
G. S. Young, Jr. (employee of owner) or (~~owner or operator~~) of the above-described well, being first duly sworn on oath, says: That I have knowledge of the facts, statements, and matters herein contained and the log of the above-described well as filed and that the same are true and correct. So help me God.

(Signature) G. S. Young, Jr.
300 N. Broadway, Wichita, Kansas
(Address)

SUBSCRIBED AND SWORN TO before me this 20th day of September, 19 61.
Wm. H. Loderer
Notary Public.
My commission expires May 1, 1962

MAGNOLIA PETROLEUM COMPANY
WELL RECORD

X-1316

Total Depth Drilled 4500' **RTO** Permit No. _____ Lease Name Calob J. FORSYTH
 Oil String Set 4199' **(52')** Serial No. _____ Well No. 1
 Plug Back Depth 4162' Completed as Single Oil Well Field Forsyth
 Vertical or Directional Hole Vertical Pumping District Chase
 (TYPE OF WELL)

Parish County Barber State Kansas State Reg. District Great Bend, Kansas

Block Section 17 Lot Township 32S Unit Range 12N Distance From Nearest Town 2 mi south & 4 mi west of Medicine Lodge, Kansas

Location of Well: NW 1/4 SW 1/4 330 FWL & 990 FSL of N/2 of SW 1/4

DATE SUMMARY	Date	Work Performed By	Remarks
Location Staked	2-6-56	L. C. Case & W. B. Simmons, HPCo Civil Engr	
Level Log	2-7-56	Graham-Benson-Rinchart Oil Co., Wichita, Kansas	
Commenced Erecting Derrick	2-8-56	"	
Completed Erecting Derrick	2-8-56	"	
Commenced Rigging Up	2-8-56	"	
Initial Rigging Up Completed	2-8-56	"	
Commenced Drilling (Spud Date)	2-9-56	"	3d5 AM
Completed Drilling (Total Depth) <u>4500'</u>	2-20-56	"	
Moved In Cable Tools	2-22-56	"	
Oil String Casing Set @ <u>4199'</u>	2-21-56	"	
Plug Back (Final) @ <u>4162'</u>	2-21-56	"	
Perforations (Final) <u>4162-54'</u>	2-21-56	Perforating Guns Atlas Corp	w/1/8" bullets
Completed Subsurface Installations (Final)	2-25-56	Under the supervision of J. B. Ledbetter, HPCo Production Foreman	Dan 2" tub
Completed Well Head Installations (Final)	2-26-56		9 5/8 x 5 1/2 Dan H. Hinderliter Casing
Commenced Bringing in (Final)	2-25-56		w/2" side outlets
Well Cleaned (Final)	2-26-56		2000' work press
Commenced Abandonment			4000' test
Completed Abandonment		Co Compl Date: 2-25-56 (frac)	

* Insert the first work started, as; Build Road, Build Board Road and Turn around, Dig Canal, Clear and/or Grade Location, Lay fuel and Water Lines, Dig Slush Pit, Build Rig Foundation, or, Install Drilling Foundation.

NO. DAYS WATER USED Furn by Contr : SOURCE Hauled

NO. DAYS FUEL USED Furn by Contr : KIND Butane : SOURCE Hauled

Measuring Point Will Be DP 1650' Ground Kelly Bushing Kelly Bushing to Surface Csg.

Kelly Drive Bushing 1652' Elevation 1612' To Gr. Elev. 10' Surface Csg. Flg. 12' Flange Elev. 1640'

Transfer No. In: 3483-3484 CASING, TUBING, & * CEMENTING RECORD Transfer No. Out: 3485

Size	Weight	Collars & Threads	Kind	Rge	Jts.	Total Feet Less Threads			Total No. Scratchers and Where Placed	Total No. Centralizers and Where Placed
						Put In	Pulled	Left In		
9 5/8"	32.30	8 RT H-40 (cl 1)	EW Steel		11	344'		344'	None	None
5 1/2"	14.04	8 RT J-55	EW Steel		2	4199'		4199'	20- 4135-58	6- 4195 - 4163 4138 - 4107 4376 - 4344
2"	4.74	8 RT J-55	EUE Sals Steel		2	4142'		4142'	None	None

* Measured fr Kelly Bushing

9 5/8" csg set @ 344' w/300 ex Fossix A ciro 2-9-56
 5 1/2" csg set @ 4199' w/150 ex Fossix A 2-21-56

RECEIVED
STATE CORPORATION COMMISSION
SEP 21 1961
CONSERVATION DIVISION
Wichita, Kansas

SECTION NO. 1 - PRODUCTION TESTS AND POTENTIAL TEST DATA:

Completed as a Single Oil Well - Pumping State Potential Test dated 3-26-56, well pumped 15 BO + 20% vtr in 2 1/2 hrs thru 2" tub @ 4142', 1 1/2" pump, 12-3/4" BFM, grav corr 11" (taken fr Stato Corp Conn report), prod fr perf 4142-54' Mississippi formation. This well vis-o-freced prior to above test.

* Following each string of casing, and using the full width of the sheet, give complete cementing record as follows: Where landed, Amount and kind of cement, Amount and kind of Additives, Stages of Cementing, Cement Tops, Slurry weight per Gal. and WOC Hours.

Give the balance of Well Record by Sections, in the order listed below, carefully following instructions in the Field Manual for each section. Use the reverse side of this sheet and subsequent sheets on Form X-6727 As needed.

Section 1- Production Tests and Potential Test Data
 Section 2- Formation Summary
 Section 3- Depth Measurements
 Section 4- Drill Stem Tests
 Section 5- Perforating and Squeeze Record
 Section 6- Survey Performed

Original Signed By
R. C. BRANNIN

Section 7- Core Record
 Section 8- Bit Record
 Section 9- Acidizing or Other Completion Operation
 Section 10- Summary of Operations
 Section 11- Formation Record
 Section 12- Plugging & Abandonment Record

Lease Name Calob J. FORSYTH Well No. 1 Sheet No. 1 of 1 Sheets

MAGNOLIA PETROLEUM COMPANY
WELL RECORD

SECTION NO. 2 - FORMATION SURVEY: Data taken from L-1092

<u>FORMATION</u>	<u>FROM</u>	<u>TO</u>	<u>DST</u>	<u>GR-1 LOG</u>	<u>GR-2 LOG</u>	<u>REMARKS</u>
Native Stone	0	8				
Gypsum & Shale	8	92				
Shale	92	315				
Red Bed & Shale	315	755				
Shale w/Gypsum strata	755	1324				
Shale & Lime	1324	2418				
Shale	2418	2612				
Shale & Lime	2612	3023				
Shale	3023	3190				
Shale & Lime	3190	3559				
Lime & Shale	3559	3780				
Shale & Lime	3780	3888				
Lime	3888	3950				
Lime & Shale	3950	4002				
Lime	4002	4385				
Lime & Miss Chert	4385	4475	#1			
Mississippi	4475	4500		IL	GR, GR-N	PTAC Gamma Ray 3700-4462 Schlun Gamma Ray 315-4502 * Induction Log 3700-4498 * Neutron 315-4502
ROTARY TOTAL DEPTH		4500'				
OIL STRING SET @		4499'				
PLUG BACK DEPTH		4462'				

SECTION NO. 3 - DEPTH MEASUREMENTS:

	<u>DRILLERS</u>	<u>STEEL</u>	<u>#GR-N LOG</u>	<u>KELLY BUSHING TO</u>	<u>SURFACE FLANGE</u>
	<u>DEPTH</u>	<u>LINE</u>	<u>#WLG LOG</u>	<u>FLANGE 12'</u>	<u>DEPTH (#)</u>
Drilling Depth (RTD)	4500	4500	44503		4488
Casing Seat (surf)	344	344	* 315		392
Casing Seat (oil)	4499	4499			4487
Plug Back Depth	4462	4462			4450
Perforations	4442-54	4442-54			4430-42

Collars or Radius markers as shown on Perforating Guns Atlas Corp. Gamma Ray Log
(*) Indicates correct measurement from Surface Casing Flange as permanent datum

SECTION NO. 4 - DRILL STEM TESTS: Data taken from Morning Report & Sv Co Reports

<u>No.</u>	<u>Date</u>	<u>From To</u>	<u>Kind of Test</u>	<u>Tool @</u>	<u>Top Ck</u>	<u>Btm Ck</u>	<u>Time</u>	<u>Results</u>
1	2-20-56	4415-4475	Open Hole	4415	5/8"	5/8"	1 hr	Od blow thruout, recov 2987' gas in DP, 25' OCASOCM, 90' OCASOCM, FP 457-603' SIBHP 2750 in 20 min, Ry Hd 2342#

SECTION NO. 5 - PERFORATING AND SQUEEZE RECORD: Data taken from Morning Report & Sv Co Reports

PERFORATING RECORD

<u>No.</u>	<u>From</u>	<u>To</u>	<u>No. Shots</u>	<u>Size</u>	<u>Kind</u>	<u>Plug Back @</u>	<u>DST</u>	<u>Date</u>
1	4442	4454	48	1/2"	Bullet	4452'	#1	2-21-56

SQUEEZE RECORD: No squeeze jobs on this well

Final Plug Back Depth - 4462'
Producing Perforations - 4442-54'
Well completed on D.S.T. #1

SECTION NO. 6 - SURVEYS PERFORMED:

<u>No.</u>	<u>Kind</u>	<u>From</u>	<u>To</u>
1	Perforating Guns Atlas Corp Gamma Ray Log	3700	4462
1	Schlumberger Gamma Ray Log	315	4502
1	Schlumberger Neutron Log	315	4502
1	Schlumberger Induction Log	3700	4498

(Please see next page for Deviation Survey)

RECEIVED
STATE CORPORATION COMMISSION
SEP 21 1961
CONSERVATION DIVISION
Wichita, Kansas

SECTION NO. 6 - Cont'd

SURE SHOT DEVIATION SURVEY

<u>DEPTH</u>	<u>OFF VERTICAL</u>
345	1/4 Degree
1020	1/4 Degree
1489	1/4 Degree
1834	3/4 Degree
2149	3/4 Degree
2418	3/4 Degree
2807	1 1/4 Degrees
3190	3/4 Degree
3676	1 Degree
3888	1 Degree
3991	1 1/4 Degrees
4224	1 Degree
4385	1/2 Degree

NO DIRECTIONAL SURVEY - VERTICAL HOLE

AVERAGE HOLE DIAMETER 7 7/8"

SECTION NO. 7 - CORE RECORD: No cores taken on this well

SECTION NO. 8 - BIT RECORD: Data taken from I-1892

<u>No. Used</u>	<u>Size</u>	<u>Kind</u>	<u>From</u>	<u>To</u>
1	13 3/4"	Rockbit	0	345
15	7 7/8"	Rockbit	345	4500

SECTION NO. 9 - ACIDIZING OR OTHER COMPLETION OPERATIONS: Data taken from Morning Report

- #1, 2-24-56 Acidized perf #1 (4442-54') thru 2" tub @ 4442' w/500 gal HCA 1330#-700# rate 5.5 GPM (108 BLO); 5 min SIP 600#; sev 60 BLO in 4 hrs (-48 BLO)
- #2, 2-25-56 Vis-O-free perf #1 (4442-54') thru 5 1/2" csg w/12,000# ad & 12,000 gal lsc oil, break w/oil @ 2100# rate 15 BPM (total 13 BLO); treat 2500#-2300# final 2300#, SI 20 min 400#, input rate 15 BPM (total 488 BLO); SI 3 hrs, flowed 344 BLO in 10 hrs (-144 BLO) gas vol 1790 MCF 3/4" ch TP 260# CP 580#

SECTION NO. 10 - SUMMARY OF OPERATIONS: Data taken from Morning Report

(1) Drilling and Exploratory Operations Performed:

- 2-9-56 Spudded, 3:45 AM; set 9 5/8" csg @ 344' w/300 ax Formix A circ, plug down @ 6:00 PM
- 2-15-56 Change to Oil Emulsion Mud @ approx 3550'
- 2-19-56 Sample Top Miss 4446'
- 2-20-56 DST #1; TD 4500'; run Schlumberger Elec logs
- 2-21-56 Set 5 1/2" csg @ 4499' w/150 ax Formix A, plug down @ 10:45

RECEIVED
STATE CORPORATION COMMISSION

(2) Completion Operations Performed:

SEP 21 1961

CONSERVATION DIVISION

- 2-22-56 MICT; balling @ 2500'
- 2-23-56 Bailed hole dry, test dry 3 hrs
- 2-24-56 Run PGAC GR logs perf #1 (4442-54'); test w/bailer 3 hrs 3 CO & 9 BSW; bailed 3 hrs 6 OP & 6 GSW; ran 2" tub to 4442' & acidize perf 4442-54' w/500 gal HCA (-48 BLO) FB 4442'
- 2-25-56 FB 4442'; sev 48 BLO in 5 hrs (LO recov); sev 8 BLO in 2 hrs w/small show gas; Vis-O-free perf 4442-54' w/12,000# ad & 12,000 gal lsc oil (-144 BLO) - Com Compl Date
- 2-25-56 FB 4442'; flow 144 BLO (LO recov) & 8 BSW in 16 hrs 3/4" ch TP 100# CP 450# gas vol 1250 MCF; flow 39 BHO & 10 BSW in 8 hrs 3/4" ch TP 50# CP 400# gas vol 734 MCF
- 2-27-56 Flow 76 BO & 42 BSW in 24 hrs 3/4" ch TP 60# CP 390# gas vol 534 MCF, grav corr 26°, GOR 7026/1
- 2-28-56 SI - TP 300# CP 620# - building tank battery
- 2-29-56 Flowed 40 BHO & 31 BSW in 11 hrs 1/2" ch TP 120# CP 460# gas vol 483 MCF
- 3-1-56 Flow 21 BO & 6 BSW in 8 hrs 1/2" ch TP 100# CP 400# gas vol 447 MCF
- 3-2-56 Flow 52 BO & 13 BSW in 24 hrs 1/2" ch TP 80# CP 380# gas vol 415 MCF
- 3-3-56 Flow 38 BO & 10 BSW in 16 hrs 1/2" ch TP 50# CP 380# gas vol 415 MCF
- 3-4-56 Hook up T/S & Ptr Treater
- 3-5-56 Filling Heater Treater
- 3-6-56 Filling Heater Treater
- 3-7-56 Flow 32 BO & 9 BSW in 24 hrs, 1/2" ch TP 80# CP 380#
- 3-26-56 State Potential Test: Pump 15 BO & 20% wtr in 24 hrs - pipe see Section No. 1

Caleb J. FORSTIN

MAGNOLIA PETROLEUM COMPANY
WELL RECORD

SECTION NO. 11 - INFORMATION RECORD: Data taken from Geological Letter

FORMATION	DEPTH	SUB-SEA	SOURCE
Douglas	3773	-2123	Samples M/F
Lansing-Kansas City	3881	-2231	"
Mississippi	4418	-2768	"
Rotary Total Depth	4500		
Plug Back Depth	4462		

(11-59)

Mobil Oil Company
SUPPLEMENT TO WELL RECORD

DATE October 11, 1960

X-8070	WELL NO. 1	DISTRICT Wichita	DIVISION Denver	PLEASE CIRCULATE TO: DIST. SUPT. MAIL SUP. SAFETY SUP. OFF. MGR. GROUP SUP. SCHEDULE DESIGNATED ROUTINE IS COMPLETED
LEASE C. J. Forsyth	STATE Kansas	COUNTY OF BARBER	REASON FOR WORK Increase production.	<input checked="" type="checkbox"/> WORK OVER <input type="checkbox"/> CLEAN OUT <input type="checkbox"/> RECOMPLETION <input type="checkbox"/> DRILL DEEPER <input type="checkbox"/> REDRILL <input type="checkbox"/> ABANDONMENT

APPROPRIATION NO.	AMOUNT REQUESTED \$ - -	APPROXIMATE EXPENDITURE \$2,200	ESTIMATED MONTHS TO PAY OUT Will not pay out.
WORK PERFORMED BY B & T Drilling Co. & Clarke & Dennis Well Ser., Inc.	DATE WORK COMMENCED 9-21-60	DATE COMPLETED 9-24-60	
PRODUCTION BEFORE Pump 2.7 BO + 8 BSW + 50 MCF gas 24 hr.	POTENTIAL TEST AFTER Pump 3 BO + 5 BSW + 100 MCF gas 24 hr.		

PREVIOUS T.D. 4500'	P.B.T.D. 4462'	MEASURING POINT Kelly Bushing
PRESENT T.D. 4500'	P.B.T.D. 4462'	MEASURING POINT Kelly Bushing
PREVIOUS PRODUCING FORMATION(S) AND DEPTH(S) Mississippian 4442'-54'	PRESENT PRODUCING FORMATION(S) AND DEPTH(S) Same	CHANGE(S) IN CASING RECORD None

SUMMARY OF OPERATIONS
 NICT and pulled rods & tubing. Clean out to 4460' PBT.D. Swab and bailed hole dry.
 Recovered 15 bbls fluid, 3% oil. Ran 2" tubing. Shut in 1 1/2 hr, CP 375#. Treated perf 4442'-54' w/2,000 gal. 15% acid + 20# J-99 + 12# J-84 per 1,000 gal. + 200# Mg Pellets. Max. press. 1200#, Min. press. 700#. Rate 4 BPM, vacuum 1 min. after pump shut down. Flush w/178 BSW (-226 BLW). Swab 60 BLW 7 hr. (-166 BLW). Shut in 12 hr., TP 480 #. Ran rods and put on pump. Pumped 166 BLW (all) in 76 hrs. Pump 3 BO + 5 BSW + 100 MCF gas in 24 hrs., 17 SPM, 34" stroke 1 1/2" pump.

Orig: District Office Well Record
 cc: Div. Oper. Supt.
 Expl. & Prod. Acctg.
 Prod. Supvr.

RECEIVED
 STATE CORPORATION COMMISSION

SEP 21 1961

USE REVERSE SIDE IF ADDITIONAL SPACE IS NEEDED

CONSERVATION DIVISION
 Wichita, Kansas