

1 040028

12-17-87

To: STATE CORPORATION COMMISSION
CONSERVATION DIVISION - PLUGGING SECTION
200 COLORADO DERBY BUILDING
WICHITA, KANSAS 67202

API NUMBER 15- 007-21,059-00-00
NW NE SE, SEC. 31, T 30 S, R 12 W/EX

TECHNICIAN'S PLUGGING REPORT

Operator License # 5046

Operator: Raymond Oil Company, Inc.
Name & Address: P.O. Box 48788
Wichita, KS 67201

2310 feet from S section line
990 feet from E section line

Lease Name Hazelton Land Co. Well # 2
County Barber 126.43

Well Total Depth 3890 feet

Conductor Pipe: Size _____ feet

Surface Casing: Size 8 5/8 feet 293

Abandoned Oil Well _____ Gas Well Input Well _____ SWD Well _____ D&A _____

Other well as hereinafter indicated _____

Plugging Contractor Kelso Casing Pulling License Number 6050

Address P.O. Box 347, Chase, KS 67524

Company to plug at: Hour: 5 P.m. Day: 17 Month: 12 Year: 19 87

Plugging proposal received from Mark McCabe

(company name) Kelso Casing Pulling (phone) 316-938-2457

were: 4 1/2" at 3888' Perfs at 3809-17, 2992-5, 2798-2802' TOC 1100'

1st plug pump 3 sx hulls and 80 sx cement.

2nd plug pump 2 sx hulls, 50 sx cement, 100 sx cement, 3 sx hulls, and 125 sx cement.

Plugging Proposal Received by Steve Durrant (TECHNICIAN)

Plugging Operations attended by Agent?: All Part _____ None _____

Operations Completed: Hour: 5:25 P.m. Day: 17 Month: 12 Year: 19 87

ACTUAL PLUGGING REPORT 1st plug pumped 3 sx hulls and 80 sx cement,

2nd plug pumped down 8 5/8" with 300 lbs. hulls and 125 sx cement.

Pumping pressure 50-400 psi and shut in 100 psi.

Remarks: Used 60/40 Pozmix 6% gel by Allied. Recovered 1076' of 2 1/2" casing.
(If additional description is necessary, use BACK of this form.)

(If additional description is necessary, use BACK of this form.) observe this plugging.

INVOICED

Signed Stephen J. Pfeiffer (TECHNICIAN)

DATE 1-7-88

INV. NO. 19413

RECEIVED STATE CORPORATION COMMISSION DEC 27 1987 CONSERVATION DIVISION WICHITA, KANSAS

Petro-Log

Compensated Density

COMPANY RAYMOND OIL COMPANY, INC.

WELL HAZELTON LAND COMPANY #2

FIELD _____

COUNTY BARBER STATE KANSAS

Location NW-NE-SE Other Services: _____

Sec. 31 Twp. 30S Rge. 12W RAG

Permanent Datum: GROUND LEVEL Elev. 1853 Elev.: K.B. 1864

Log Measured From K.B., 11 Ft. Above Perm. Datum D.F. 1862

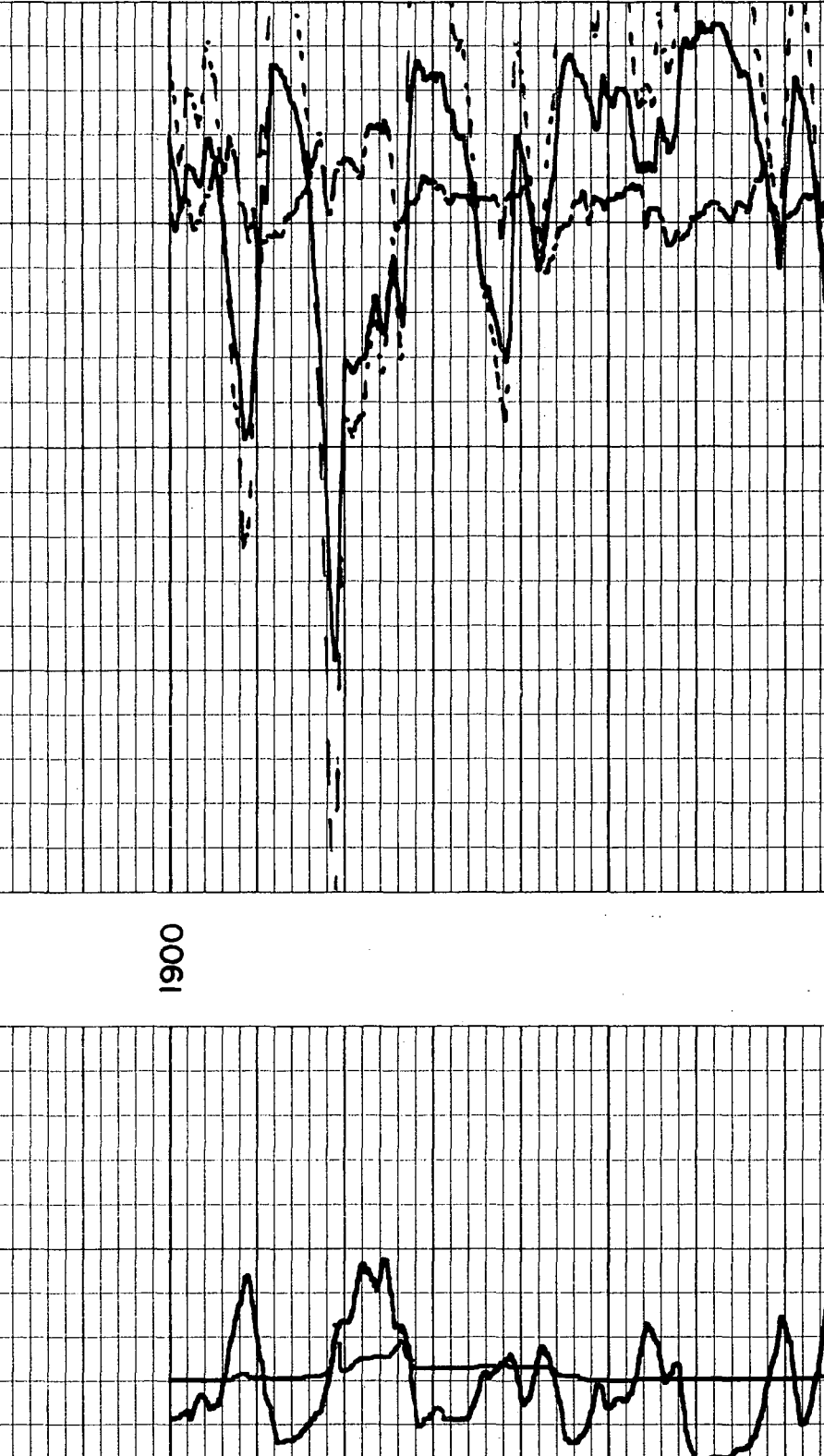
Drilling Measured From KELLY BUSHING G.L. 1853

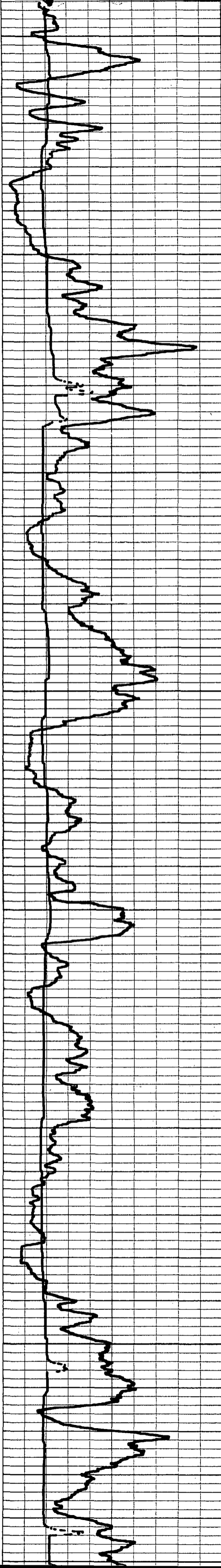
Date	12/22/80		
Run No.	ONE		
Depth—Driller	3890		
Depth—Logger	3885		
Btm. Log Inter.	3884		
Top Log Inter.	1900		
Casing—Driller	8 5/8 @ 293	@	@
Casing—Logger			
Bit Size	7 7/8		
Type Fluid in Hole	STARCH MUD		
Dens.	9.7	43	
Visc.			
pH	6.5	15.6 ml	ml
Fluid Loss			
Source of Sample	FLOWLINE		
R _m @ Meas. Temp.	.12 @ 70 °F	@ °F	@ °F
R _{m1} @ Meas. Temp.	.09 @ 70 °F	@ °F	@ °F
R _{m2} @ Meas. Temp.	.18 @ 70 °F	@ °F	@ °F
Source: R _{m1} R _{m2}	CHARTS		
R _m @ BHT	.073 @ 115 °F	@ °F	@ °F
Time Since Circ.	4.5 HOURS		
Max. Rec. Temp.	115 °F	°F	°F
Equip. Location	H-8 GB		
Recorded By	MIKE ESTES		
Witnessed By	MR. DICK ROWLAND		

RECEIVED
STATE CORPORATION COMMISSION
NOV 29 1981
CONSERVATION DIVISION
Wichita Kansas

Run No.	Tool No.	Source No.	Panel No.	Logging Unit	Location
				H-8	GREAT BEND, KS.
Equipment Data					
Calibration Data					
Run No.	API Scale	Gamma Ray Background CPS	Sid. CPS	Ds CPS AT	Di CPS AT
				2.0	2.0
				3.0	3.0
Logging Data					
Run No.	From	To	Speed Ft/Min	GR TC	
I	3885	1900	20	3	

GAMMA RAY API UNITS	110	DEPTHS	1900	BULK DENSITY GRAMS/CC	2.0
	110				2.5
CALIPER	210	HOLE SIZE - INCHES	16	POROSITY	0
					0



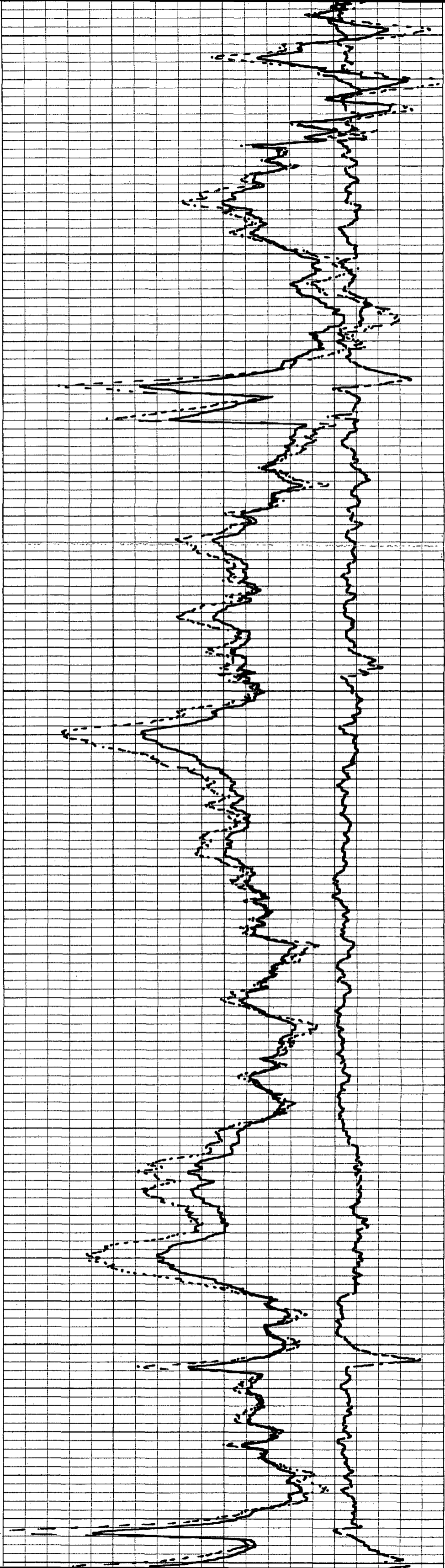


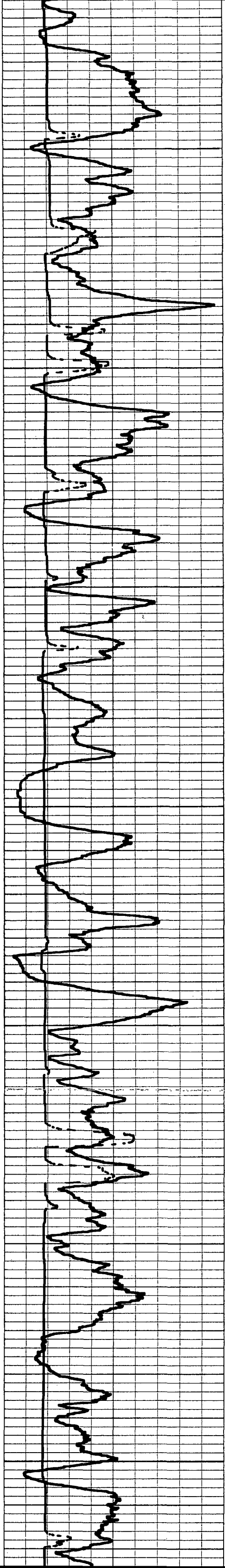
2000

2100

2200

2300



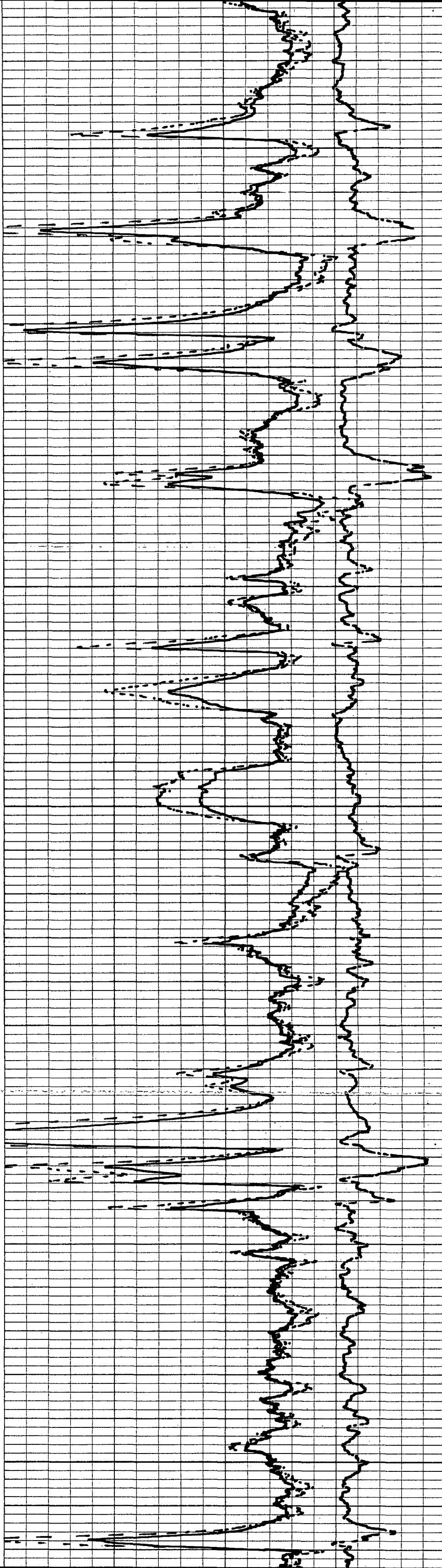


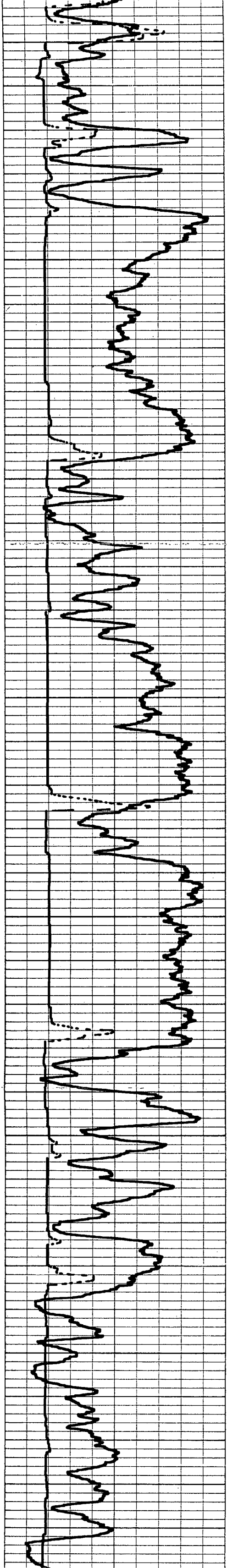
2400

2500

2600

2700

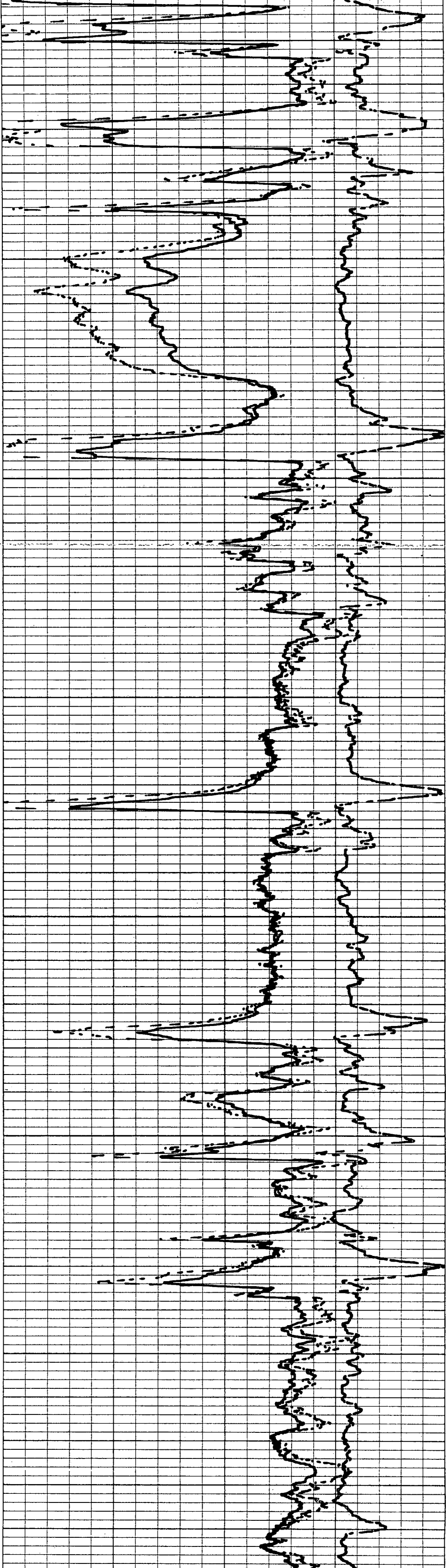


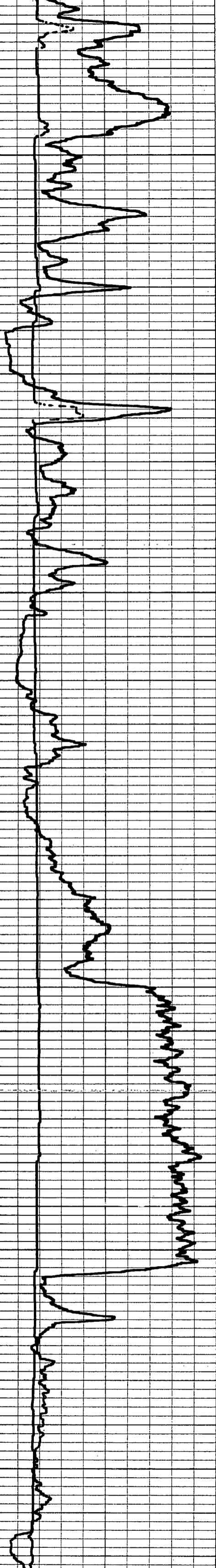


2800

2900

3000

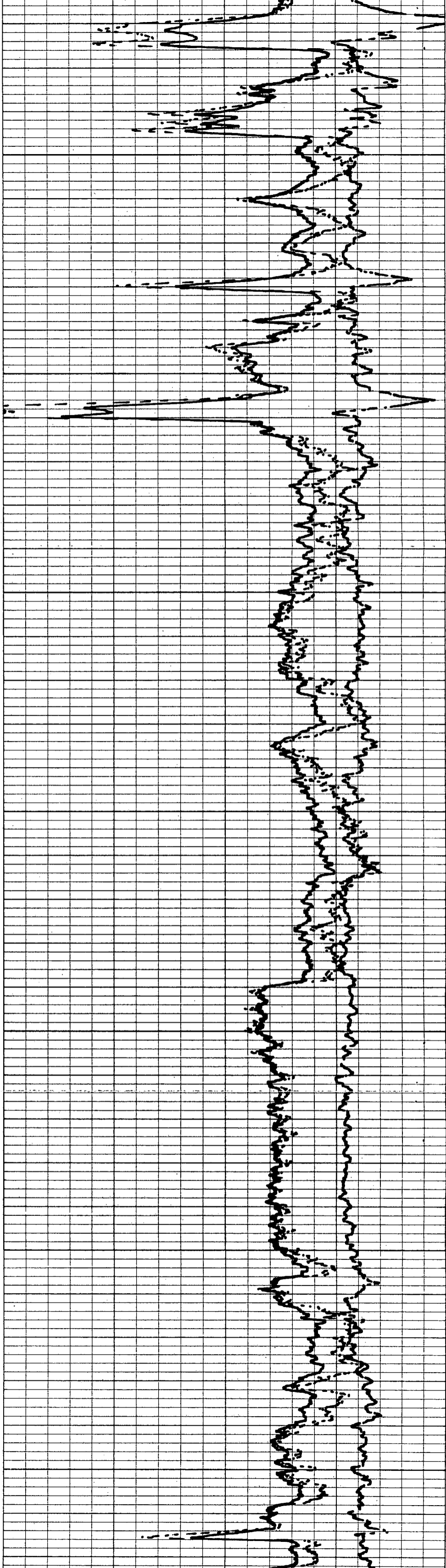


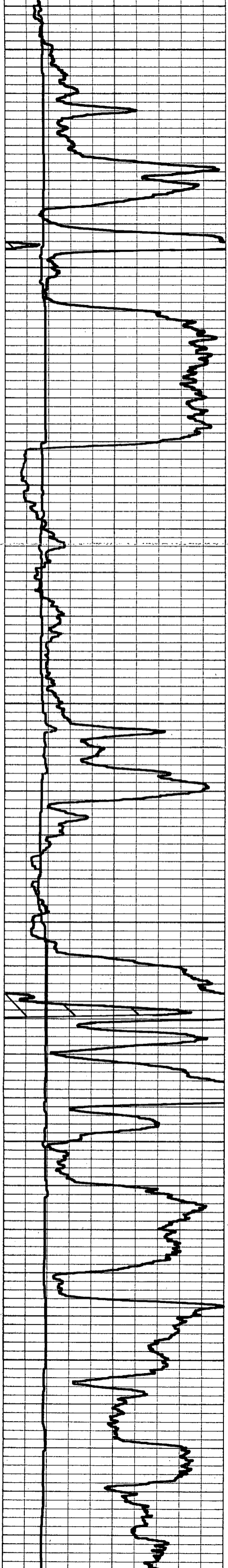


3200

3300

3400



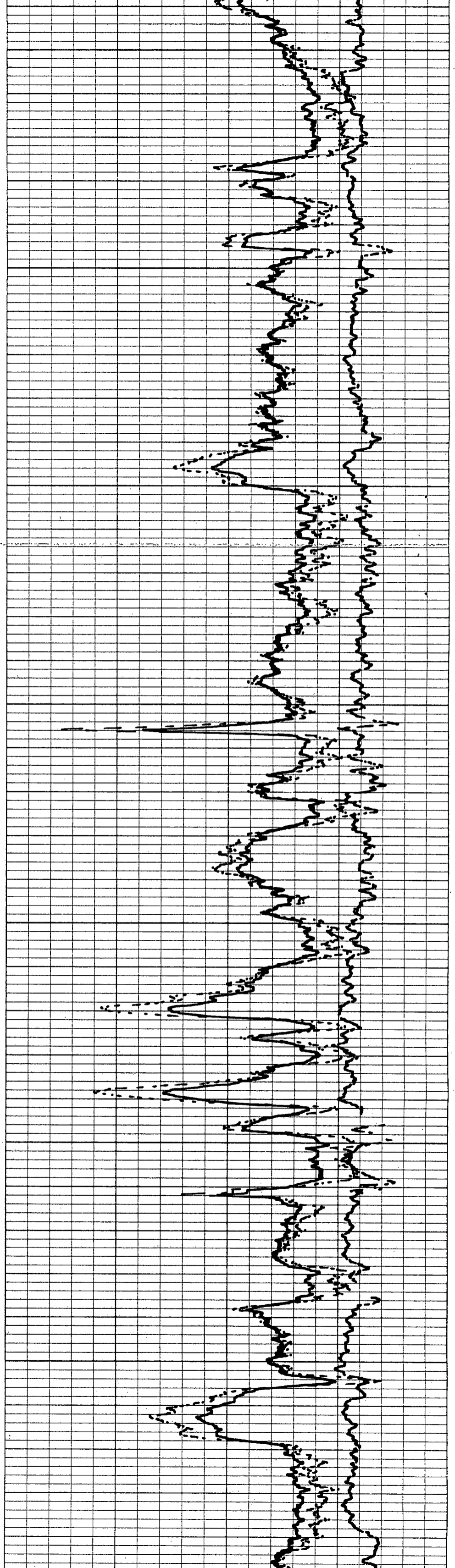


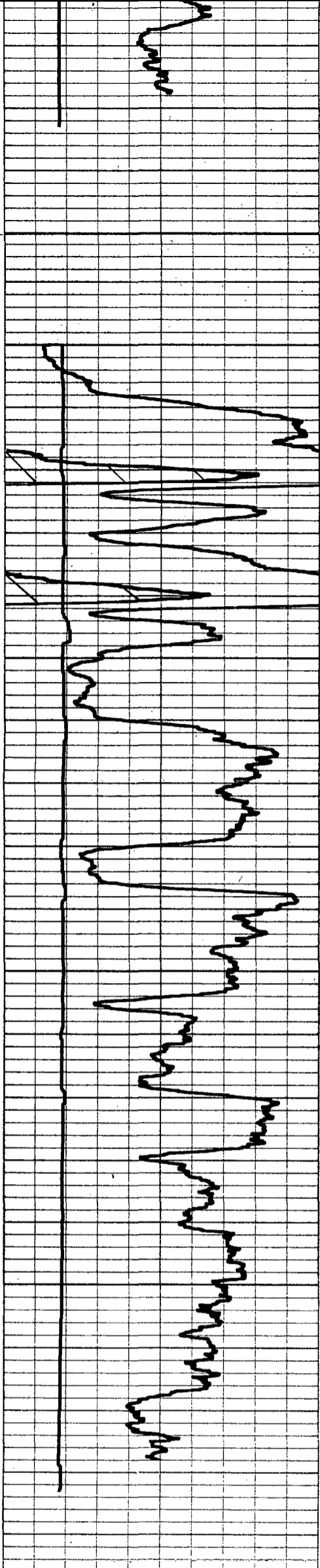
3500

3600

3700

3800

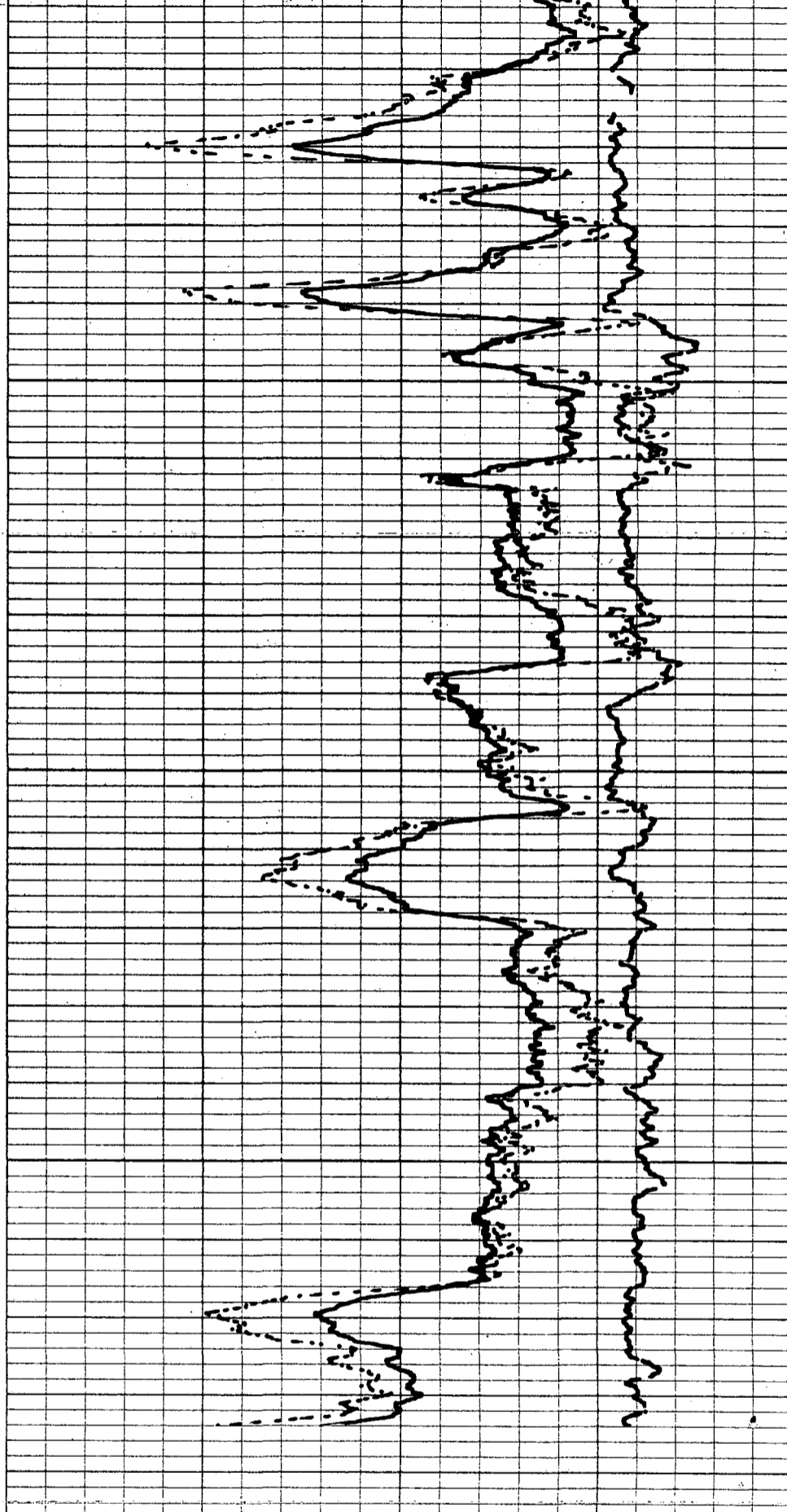




3700

3800

REPEAT SECTION



6		16	
HOLE SIZE - INCHES			
CALIPER			
10		110	
110		210	
GAMMA RAY		DEPTHS	
API UNITS			

30	20	10	0
POROSITY $\rho_f = 1.0$ $\rho_g = 2.71$			
	-25	0	+25
2.0	2.5		3.0
BULK DENSITY			
GRAMS/CC			