

KANSAS
STATE CORPORATION COMMISSION
CONSERVATION DIVISION AGENT'S REPORT

J. P. Roberts
Assitant Director
500 Insurance Building
212 North Market
Wichita 2, Kansas

RECEIVED
STATE CORPORATION COMMISSION
JAN 8 1966
CONSERVATION DIVISION
Wichita, Kansas

Operator's Full Name Shenandoah Oil Corporation

Complete Address: 406 Mutual Savings Bldg., Fort Worth, Texas

Lease Name Ray Rusk Well No. # 1

Location Center of Section Sec. 19 Twp. 31 Rge. 15 (E) (W) W

County Barber Total Depth 4900'

Abandoned Oil Well Gas Well Input Well SWD Well D & A X

Other well as hereafter indicated: _____

Plugging Contractor: German Drilling Company

Address: 502 Petroleum Bldg., Wichita, Kansas License No. _____

Operation Completed: Hour 5:30AM Day 31st Month Dec. Year 1966

The Above well was plugged as follows:

350' of 8 5/8" surface pipe, cement circulated with 250 sacks. Hole
was filled with drilling mud to 300', 1st cementing plug, bridged with
2 sacks of dry cement and 1/2 sack of hulls on fluid at 300', and cemented
with 23 sacks. Hole was filled with drilling mud to 40', 2nd cementing
plug, bridged with 1 sack of dry cement and 1/2 sack of hulls on fluid
at 40', and cemented with 9 sacks to the base of the cellar. Rat hole
bridged and cemented with 2 sacks.

I hereby certify that the above well was plugged as herein stated.

INVOICED

Signed: Audie Elving
Well Plugging Supervisor

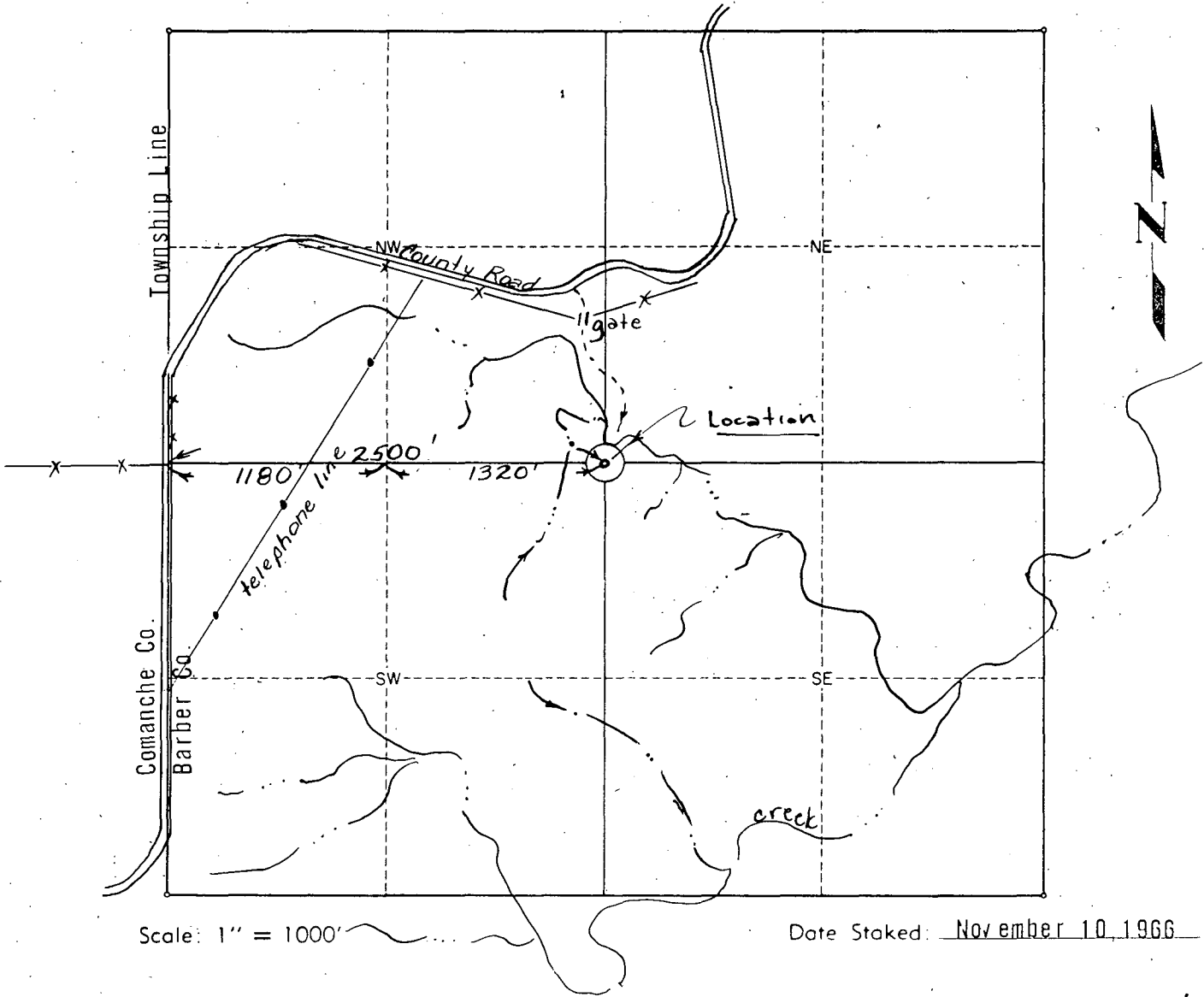
DATE 1/4/69
INV. NO. 4556-W

TOPOGRAPHIC, INC.

Surveying & Mapping for the Oil & Gas Industry
1020 E. English St. (316) AMherst 2-4383
Wichita, Kansas 67211

RECEIVED
STATE CORPORATION COMMISSION
FEB 6 1967
CONSERVATION DIVISION
Wichita, Kansas

BARBER County, Kansas
Center Section 19 Township 31S Range 15W



Operator: SHENANDOAH OIL CORPORATION

Lease Name: Ray Rusk, et al Well No.: 1

ELEVATION:

Topography & Vegetation: Natural pasture in deep gully

Reference Stakes or Alternate Location Stakes Set 200' S and 150' N

Good Drill Site? no

Best Accessibility to Location: From county road in NW/4 Sec. 19

Distance & Direction from Hwy Jct or Town: From Wilmore, go 12 miles E to the SW corner of Sec. 19-31S-15W.

CERTIFICATE:

I, Virgil R. Rogers, an authorized agent of Topographic, Inc., do hereby certify that I have surveyed and staked the above described well location in accordance with the laws of the State of Kansas, and that this plat shows the true results of that survey.

TOPOGRAPHIC, INC.

By: Virgil R. Rogers