

KANSAS

FORM CP-3
Rev. 11-3-80

STATE CORPORATION COMMISSION

CONSERVATION DIVISION AGENT REPORT

API Number 15-007-21,084-00-00

200 Colorado Derby Bldg.
Wichita, KS 67202

Operator's Full Name Monexco

Complete Address 101 Park Avenue, Suite 1300 Oklahoma City, Oklahoma

Lease Name Douthett Well No. 1-23

Location SW SW NE Sec. 23 Twp. 30 Rge. 11W (East) (West)

County Barber Total Depth 4900'

Abandoned Oil Well Gas Well Input Well SWD Well D & A

Other well as hereafter indicated _____

Plugging Contractor Rains & Williamson Oil Co.

Address 250 W. Douglas, Wichita, Kansas License No. _____

Operation Completed: Hour: 6:30A.M. Day: 21 Month: 4 Year: 19 81

The above well was plugged as follows:

333' of 8 5/8" W/225 sx

40 sx @ 330'

Bridge & 10 sx @ 40'

10 sx R.H. Cemented by Howco

I hereby certify that the above well was plugged as herein stated.

INVOICED

DATE 5-28-81

INV. NO. 5528-W

Signed: [Signature]
Conservation Division Agent

IMPORTANT
 Kans. Geo. Survey request
 samples on this well.

KANSAS
WELL COMPLETION REPORT AND
DRILLER'S LOG

S. 23 T. 30 R. 11 ^E_W
 Loc. SW SW NE
 County Barber

API No. 15 — 007 — 21,084-00-00 *COPY*
 County Number

Operator
Monexco

Address
101 Park Ave., Suite 1300 Okla City 73102

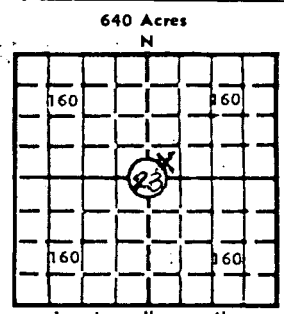
Well No. #1-23 Lease Name Douthett

Footage Location
2310 feet from (N) line 330' feet from (W) line of $\frac{1}{4}$ Sec.

Principal Contractor Rains & Williamson Geologist Tom G. Robinson

Spud Date 4/10/81 Date Completed 4/21/81 Total Depth 4900' P.B.T.D. P & A

Directional Deviation Oil and/or Gas Purchaser



Elev.: Gr. 1798
 DF 1804 KB 1806

CASING RECORD

Report of all strings set — surface, intermediate, production, etc.

Purpose of string	Size hole drilled	Size casing set (in O.D.)	Weight lbs/ft.	Setting depth	Type cement	Sacks	Type and percent additives
Surface	12 $\frac{1}{2}$	8-5/8	23#	330'	Class H	225 sx	2% gel 3% CC

LINER RECORD

PERFORATION RECORD

Top, ft.	Bottom, ft.	Sacks cement	Shots per ft.	Size & type	Depth interval

TUBING RECORD

Size	Setting depth	Packer set at

ACID, FRACTURE, SHOT, CEMENT SQUEEZE RECORD

Amount and kind of material used	Depth interval treated

INITIAL PRODUCTION

RECEIVED

STATE CORPORATION COMMISSION

Date of first production Producing method (flowing, pumping, gas lift, etc.)

RATE OF PRODUCTION PER 24 HOURS
 Oil Gas Water
 bbls. MCF bbls. CFPB

MAY 13 1981

Disposition of gas (vented, used on lease or sold) Producing interval(s)
 CONSERVATION DIVISION
 Wichita, Kansas

INSTRUCTIONS: As provided in KCC Rule 82-2-125, within 90 days after completion of a well, one completed copy of this Drillers Log shall be transmitted to the State Geological Survey of Kansas, 4150 Monroe Street, Wichita, Kansas 67209. Copies of this form are available from the Conservation Division, State Corporation Commission, 245 No. Water, Wichita, Kansas 67202. Phone AC 316-522-2206. If confidential custody is desired, please note Rule 82-2-125. Drillers Logs will be on open file in the Oil and Gas Division, State Geological Survey of Kansas, Lawrence, Kansas 66044.

Operator Monexco		DESIGNATE TYPE OF COMP.: OIL, GAS, DRY HOLE, SWDW, ETC.:
Well No. 1-23	Lease Name Douthett	Dry Hole
S <u>23</u> T <u>30</u> R <u>11</u> W		

WELL LOG

Show all important zones of porosity and contents thereof; cored intervals, and all drill-stem tests, including depth interval tested, cushion used, time tool open, flowing and shut-in pressures, and recoveries.

SHOW GEOLOGICAL MARKERS, LOGS RUN, OR OTHER DESCRIPTIVE INFORMATION.

FORMATION DESCRIPTION, CONTENTS, ETC.	TOP	BOTTOM	NAME	DEPTH
Surface Casing		329		
Red Beds, Shales, Anhydrite	329	1322		
Limestone with Dolomite & Sandstones	1322	1688		
Limestone & Shales with Anhydrite	1688	2290		
<u>Base Florence</u> 2220/-414	2220			
Shale & Limestone	2290	2732		
Sandstone & Shale	2732	2782		
DST #1 Indian Cave (2702-2750)				
Limestone	2782	3310		
Shale	3310	3518		
<u>Penn Shale</u> 3312/1506				
Sandstone	3518	3535		
Shale & Limestone	3535	3800		
Heebner Shale 3714/-1908				
Sandstone	3800	3880		
Lansing 3880/-2634				
Limestone	3880	4230		
Black Shale & Limestone	4230	4440		
Mississippi 4440/-2634				
Chert	4440	4512		
Shale	4512	4700		
Limestone Viola 4700/-2894	4700	4782		
Sandstone & Shale	4782	4821		
Shale	4821	4876		
Dolomite Arbuckle 4877/-3071	4876	4910		
Total depth		4910'		

USE ADDITIONAL SHEETS, IF NECESSARY, TO COMPLETE WELL RECORD.

Date Received	<i>James P. Miller</i>
	Signature
	Agent
	Title
	May 12, 1981
	Date

DOUTHETT #1-23
SW SW NE Sec 23-30S-11W
Barber County, Kansas

WELL RECORD

DST #1

2702'-2750' Indian Cove Sand

Open 15 minutes
Closed 30 minutes
Open 30 minutes
FSI 60 minutes

Strong blow throughout test.
Recovered 1000' muddy salt water
45#-366#
ISIP No Record
IHP 1328#
FFP 408#-560#
FSIP 1316#

DST #2

4418'-4450' Lansing Kansas City

Open 15 minutes
Closed 30 minutes
Open 30 minutes
FSI 60 minutes

Slight gas blow.
Recovered 210' mud cut oil, and
240' slightly oil cut salt water.
IHP 2322#
IFP 185#-247#
ISIP 1434#
FHP 2177#
FFP 247#-371#
FSIP 1291#