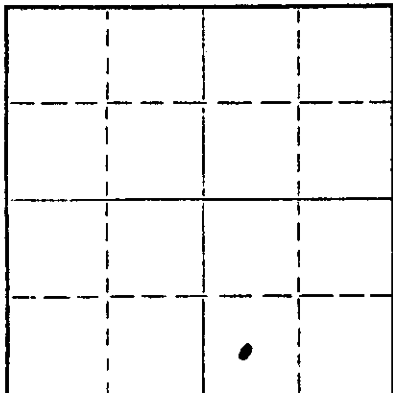


STATE OF KANSAS
STATE CORPORATION COMMISSION

WELL PLUGGING RECORD

Give All Information Completely
Make Required Affidavit
Mail or Deliver Report to:
Conservation Division
State Corporation Commission
P. O. Box 17027
Wichita, Kansas 67217
NORTH



Locate well correctly on above
Section Plat

Harper County, Sec. 23 Twp. 32S Rge. 8 (E) W (W)
Location as "NE/CNW/SE" or footage from lines SW SE
Lease Owner Lario Oil & Gas Co.
Lease Name Wilson Well No. 1
Office Address 301 S. Market, Wichita, Kansas 67202
Character of Well (completed as Oil, Gas or Dry Hole) Dry Hole
Date well completed 8-13 1972
Application for plugging filed 8-13 1972
Application for plugging approved 8-13 1972
Plugging commenced 8-13 1972
Plugging completed 8-13 1972
Reason for abandonment of well or producing formation Dry Hole

If a producing well is abandoned, date of last production 19
Was permission obtained from the Conservation Division or its agents before plugging was commenced? Yes

Name of Conservation Agent who supervised plugging of this well Russ Biberstien
Producing formation _____ Depth to top _____ Bottom _____ Total Depth of Well _____ Feet
Show depth and thickness of all water, oil and gas formations.

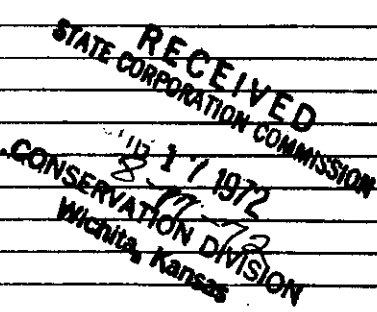
OIL, GAS OR WATER RECORDS

CASING RECORD

FORMATION	CONTENT	FROM	TO	SIZE	PUT IN	PULLED OUT
Surface pipe		-0-	298	8 5/8"	298	None

Describe in detail the manner in which the well was plugged, indicating where the mud fluid was placed and the method or methods used in introducing it into the hole. If cement or other plugs were used, state the character of same and depth placed, from _____ feet to _____ feet for each plug set.

Filled hole with heavy mud.
#1 plug set @ 250' with 35 sks. cement.
#2 plug set @ 40' with 10 sks. cement.
#3 plug set in rat hole with 2 sks. cement.

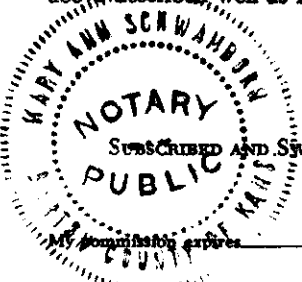


(If additional description is necessary, use BACK of this sheet)

Name of Plugging Contractor Sweetman Drilling, Inc.
Address Box 645, Great Bend, Kansas 67530

STATE OF Kansas, COUNTY OF Barton, ss.
Gary L. Hawk (employee of owner) or (owner or operator) of the above-described well, being first duly sworn on oath, says: That I have knowledge of the facts, statements, and matters herein contained and the log of the above-described well as filed and that the same are true and correct. So help me God.

(Signature) Gary L. Hawk
Box 645, Great Bend, Kansas 67530 (Address)



Subscribed and sworn to before me this 15th day of August, 1972

Mary Ann Schwamborn
Notary Public.

WELL LOG
Wilson #1
SW SE 23-32S-8W
Harper County, Kansas

Name of Operator: Lario Oil & Gas Co.
301 South Market
Wichita, Kansas

Date Completed: August 13, 1972

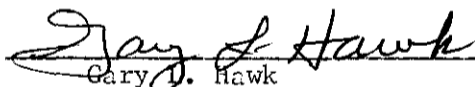
<u>FROM</u>	<u>TO</u>	
0	815	Shale
815	3735	Shale & Lime
3735	3754	Sand
3754	3995	Lime and shale
3995	4738	Lime
4738	4828	Lime and shale
4828	4870	Lime
4870		Total Depth

RECEIVED
STATE CORPORATION COMMISSION
AUG 17 1972
CONSERVATION DIVISION
Wichita, Kansas

STATE OF KANSAS

COUNTY OF BARTON ss

Gary L. Hawk, Secretary of Sweetman Drilling, Inc., being first duly sworn on oath says: That I have knowledge of the facts, statements and matters herein contained and the log of the above described well as filed and that the same are true and correct.



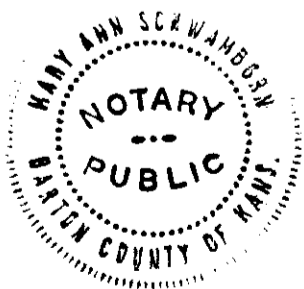
Gary L. Hawk

Subscribed and sworn before me this 15th day of August, 1972.



Mary Ann Schwamborn
Notary Public Barton County

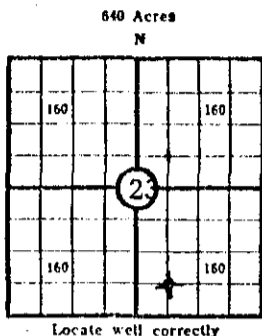
My Commission Expires 7-10-73



KANSAS CORPORATION COMMISSION

WELL RECORD

(Mail to Kansas Geological Survey, 4150 Monroe Street, Wichita, Kansas 67209)



Lease Name: Wilson Well No. 1
 Well Located: C SW SE
SEC 23 TWP 32 RGE 8W
 Operator: Lario Oil & Gas Company
 Address: 301 S. Market, Wichita, Kansas
 Elevation: Ground 1403' D.F. 1410' K.B. 1413'
 Type Well: (Oil, gas, dry hole) Dry Hole

Drilling Commenced: August 1, 1972 Drilling Completed: August 11, 1972
 Well Completed: August 13, 1972 Total Depth _____
 Initial Production: _____

Casing Record

Size: 8 5/8" Set at 298' Size: _____ Set at _____
 Size: _____ Set at _____ Size: _____ Set at _____

Liner Record

Size: 8 5/8" Set from _____ To _____

Cementing

Casing Size _____ Sacks _____ Type Cement and Additives _____
8 5/8" 300 HA-5 Common

RECEIVED
 STATE CORPORATION COMMISSION
 AUG 17 1972
 CONSERVATION DIVISION
 Wichita, Kansas

Perforations

Formation _____ Perforated Interval and Number Shots _____

Electric Log Run (Show type log and depths covered)

Welex Radiation-Guard Log 3300-4868'

(Fill in formation and related information on reverse side)

FORMATION, TESTING AND COMPLETION RECORD

Show Drill Stem Tests,
Well Stimulation and
Production Tests

Formation	Top	Bottom	
Surface sand	0	25	DST #1: 4414-4426' S.I. 45". Gas to surface in 10 minutes. Stabilized at 27 Mcf. ISIP 1589. FSIP 1520. Rec. 10' slightly gas cut mud. No show of oil.
Red beds	25	50	
Shale	50	1380	
Shale & lime	1380	3642	
Lime, sand, shale	3642	3833	
Lime & shale	3833	3995	
Lime	3995	4450	
Mississippi	4450	4706	
Shale & lime	4706	4738	
Lime	4738	4870	
			DST #2: 4427-4446' S.I. 60". Gas to surface in 4" 30" - 509 Mcf Stabilized 555 Mcf. ISIP 1753; FSIP 1736. Rec. 80' slightly gas cut mud, no water.
			DST #3: 4447-4466' S.I. 45". Gas to surface in 35". Stabilized at 12 Mcf. Rec. 120' muddy water with scum of oil and 480' salt water. ISIP 1683; FSIP 1683.
	<u>Elec. Tops</u>		
Heebner	3348	(-1935)	DST #4: 4844-4870' SI 45 minutes. Rec. 1100' salt water, slight show of gas. ISIP 1831; FSIP 1832.
Iatan	3630	(-2217)	
Stalnaker Zone	3700	(-2287)	
Clean Sand	3726	(-2313)	
Base Stalnaker	3753	(-2340)	
Kansas City	3900	(-2487)	
Base Kansas City	4110	(-2697)	
Marmaton	4180	(-2767)	
Cherokee	4288	(-2875)	
Mississippi	4413	(-3000)	
Kinderhook	4724	(-3311)	
Viola	4803	(-3390)	
Simpson	4862	(-3459)	
Log T.D.	4868		

RECEIVED
 STATE CONSERVATION COMMISSION
 APR 11 1955
 CONSERVATION DIVISION
 MISSOURI

RECEIVED
 STATE CONSERVATION COMMISSION
 APR 11 1955
 CONSERVATION DIVISION
 MISSOURI