

TYPE

## NOTICE OF INTENTION TO DRILL

C-1

TO BE FILED WITH THE STATE CORPORATION COMMISSION  
PRIOR TO COMMENCEMENT OF WELL

1. Operator Robinson Oil Company & Sweetman Drilling, Inc.  
340 R. H. Garvey Bldg.  
Address Wichita, Kansas 67202
2. Contractor Sweetman Drilling, Inc.  
1427 Vickers-KSB&T Bldg.  
Address Wichita, Kansas 67202
3. Type of Equipment: Rotary X Cable Tool \_\_\_\_\_
4. Well to be Drilled for: Oil \_\_\_\_\_ Gas X  
Disposal \_\_\_\_\_ Input \_\_\_\_\_ Other \_\_\_\_\_
5. Depth of Deepest Fresh Water within 1 mile 80 ft.
6. Depth of Municipal Water Well within 3 miles None ft.
7. Depth to Protect all Fresh Water 150 ft.
8. Amount of Surface Casing to be set 210 ft.
9. Alternate No. 1 X No. 2 \_\_\_\_\_

## REMARKS:

SAMPLES WILL BE SAVED

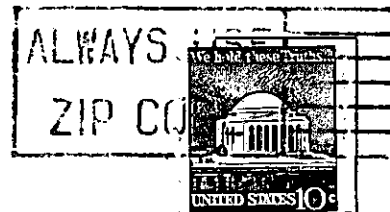
OPERATOR STATES THAT HE WILL COMPLY WITH K. S. A. 55-128

Signature of Operator

*Lee H. Robinson*  
OK RML

API Number

15-077-20306-00-00  
(For office use only)Starting Date March 18, 1975County HarperSec 17 Twp 34S S Rge. 9W X  
WSpot Location C NW SENearest Lease Line 660 ft.Lease Name Vondracek-Cantrell Gas  
UnitWell No. 1Est. Total Depth 4650 ft.



**State Corporation Commission of Kansas**  
**Conservation Division**  
**P.O. Box 17027**  
**Wichita, Kansas 67217**

**RECEIVED**  
**STATE CORPORATION COMMISSION**  
**MAR 14 1975**  
**3-14-75**  
**CONSERVATION DIVISION**  
**Wichita, Kansas**

(IF PREFERRED, MAIL IN ENVELOPE)